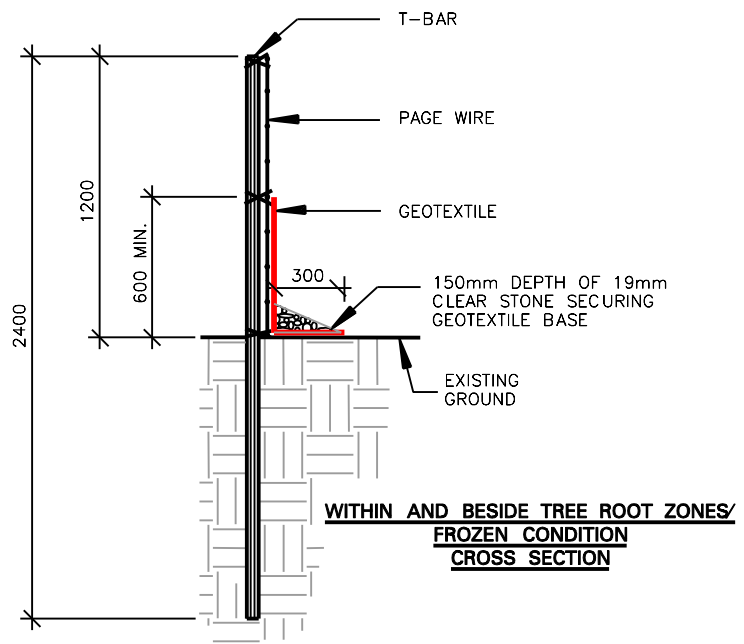
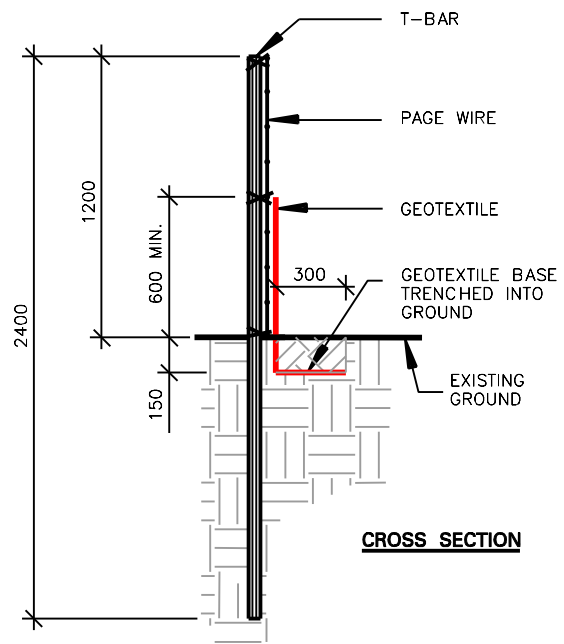
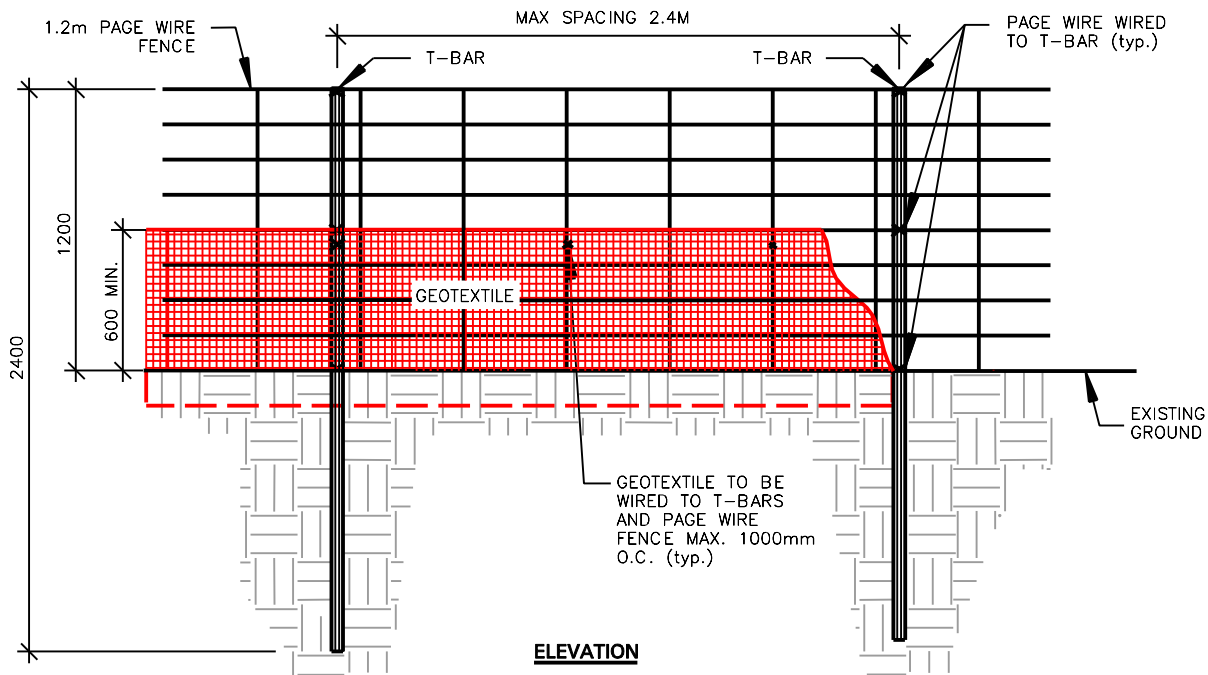


PAGE WIRE HOARDING & SEDIMENT CONTROL



- NOTES:**
1. ALL DIMENSIONS IN MILLIMETRES UNLESS OTHERWISE NOTED.
 2. IT IS THE CONTRACTOR'S RESPONSIBILITY TO OBTAIN LOCATES OF ALL EXISTING UTILITIES AND SERVICING PRIOR TO INSTALLING HOARDING.
 3. DO NOT DAMAGE VISIBLE TREE ROOTS WHEN INSTALLING T-BARS.
 4. GEOTEXTILE TO BE WOVEN OR NON WOVEN. MINIMUM EQUIVALENT OPENING SIZE IS 0.15mm AND MAXIMUM EQUIVALENT OPENING SIZE IS 0.25mm.
 5. GEOTEXTILE TO HAVE HORIZONTAL OVERLAP OF 1000mm MINIMUM AT JOINTS.
 6. HOARDING MUST BE MAINTAINED IN SOUND CONDITION THROUGH ALL PHASES OF CONSTRUCTION UNTIL APPROVAL TO REMOVE HOARDING IS OBTAINED FROM THE COMMUNITY SERVICES DEPARTMENT.



SCALE: N.T.S.
 DATE: JANUARY 2005
 DRAWN BY: P & H
 NUMBER: 02830-4