

2008 EMPLOYMENT PROFILE

2008 employment profile



Employment Profile 2008

**City of Mississauga
Planning & Building Department
December 2008**

The information presented in this report is based on the 2008 Employment Survey. The survey was a collaborative effort by the Planning and Building Department and the Economic Development Office.

Figures in this report have been rounded. Calculations (e.g., summations and percentages) have been performed on unrounded data.

TABLE OF CONTENTS

1.0	INTRODUCTION	1
1.1	Background	1
1.2	Methodology	2
2.0	EMPLOYMENT DATA - 2008	3
2.1	Total Employment.....	3
2.1.1	Employment by Planning District	4
2.1.2	Full-time and Part-time Employment	5
2.2	Businesses and Vacancies.....	7
2.2.1	Businesses and Vacancies by Planning District.....	7
2.3	Businesses by Business Size	12
2.4	Businesses and Employment by Business Classification	18
2.5	Employment Density.....	28
3.0	TRENDS IN EMPLOYMENT AND BUSINESS GROWTH	32
3.1	Employment and Business Trends to 2008	32
3.2	Businesses by Planning District	34
4.0	KEY FINDINGS.....	36

Appendix A: Planning Districts

Appendix B: Employment Adjustment Factors

Appendix C: Businesses with 300+ Employees

Appendix D: NAICS Descriptions

Appendix E: Traffic Zones

Appendix F: Employment Density Calculations

List of Tables

1.	Population, Total Employment and Resident Labour Force, 2008	4
2.	Businesses and Vacancies by Planning District, 2008	8
3.	Number of Businesses by Business Size and Planning District, 2008	13
4.	Number of Employees by Business Size and Planning District, 2008	14
5.	Businesses and Employment by Business Classification, 2008	19
6.	Businesses by Planning District, 2004-2008	35

List of Figures

1.	Employment by Planning District, 2008	6
2a.	Businesses by Planning District, 2008	9
2b.	Vacancies by Planning District, 2008	10
3a.	Number of Businesses by Business Size, 2008	15
3b.	Percentage of Businesses by Business Size, 2008	15
3c.	Number of Employees by Business Size, 2008	16
3d.	Percentage of Employees by Business Size, 2008	16
4a.	Businesses by Business Classification, 2008	20
4b.	Employment by Business Classification, 2008	20
5.	Business Classification by Business Size, 2008	21
6.	Employment and Population Trends, 1976/77 to 2008	33

List of Maps

1.	Vacancies	11
2.	Location of Businesses with 300+ Employees	17
3.	Location of Retail Trade Businesses	23
4.	Location of Wholesale Trade Businesses	24
5.	Location of Manufacturing Businesses	25
6.	Location of Professional, Scientific and Technical Services Businesses	26
7.	Location of Transportation and Warehousing Businesses	27
8.	Gross Employment Density by Traffic Zone	30
9.	Net Employment Density by Traffic Zone	31

1.0 INTRODUCTION

This report presents a profile of employment and business activities in the City of Mississauga in 2008. The City acknowledges the importance of a strong employment base by incorporating objectives regarding employment in both its Strategic Plan and Mississauga Plan.

One of the Strategic Plan visions is that *“Mississauga will be a distinct major Canadian City.”* Objectives relating to this statement include, *“to develop a regional employment centre in excess of 500,000 jobs”* and *“to provide a variety of opportunities in housing, employment, recreation, cultural and social amenities.”* In addition, the Strategic Plan states that *“Mississauga will have a dynamic and diverse economic base.”* Objectives related to this goal include *“. . . assist(ing) local business to grow and prosper”* and *“attract(ing) new businesses that offer good growth prospects and provide high-quality jobs.”*

Employment is also a principal theme of Mississauga Plan. Mississauga Plan states that the City will have a strong economic base having a diversity of business activities, capability for growth and a wide range of employment activities. Mississauga Plan Goal 2.3, *“Population and Employment”* states, *“Mississauga will encourage a range of employment opportunities...”* Objectives relating to this goal state that the City, *“continue to be a net importer of labour.”*

Monitoring of strategic and planning policies is undertaken to ensure the objectives outlined in these policies are being met. The Employment Survey and Employment Profile are part of the monitoring activities and contribute to the assessment of how the goals in the Strategic Plan and Mississauga Plan are being implemented.

Collection of employment information is an important data resource. In addition to monitoring strategic and planning policies, the data are used in forecasting and planning for future needs and services, attracting businesses to the City, retention programs for existing businesses and development of future financial and economic strategies.

1.1 Background

Annual monitoring of employment trends is a challenging endeavour and methodologies have changed to address issues that have emerged at various times. The present employment survey method was initiated in 1999. The 1999 review of employment in the City concentrated on developing a complete inventory of businesses from the variety of databases used in the past as well as field checking the existing data set. The 1999 employment survey focussed on information relating to businesses. In subsequent years, information relating to businesses was verified and kept current and an emphasis was placed on adding and updating employment data. The data that is collected includes complete business name and address, contact person and phone number, web and email address, number of full-time and part-time employees, description of the business, parent company and years in Mississauga. The employment survey does not collect data for home-based businesses.

Employment information is stored in the Mississauga Employment Database (MED). This database, shared by both the Planning and Building Department and Economic Development Office, is maintained and updated on an on-going basis.

Other sources of employment information for the City of Mississauga includes data from the Canadian Business Patterns (CBP), produced by Statistics Canada, the 2006 Census of Canada, the Labour Force Survey by Statistics Canada for June 2008, and the 2008 Growth Forecasts prepared by Hemson Consulting. Employment data from these sources are monitored and reviewed on a continuing basis.

1.2 Methodology

The methodology for the 2008 Employment Survey included the compilation of a complete list of employment sites from the 2007 Mississauga Employment Database, new businesses from Building Permit Reports, and a comprehensive field survey to confirm the name and location of every business in the City. For businesses located within Residential Districts, a mail-out questionnaire was sent to selected businesses requesting further information on business operations and employment information; a follow-up telephone interview was attempted where there was no response to the mail-out questionnaire. For businesses located within Employment Districts, a telephone survey was conducted of selected businesses by the firm AJD Data Services and monitored by the Economic Development Office¹.

A property-based approach is used to collect employment data. Employment information is recorded by location. Where a business has several locations, employment is recorded at each separate location. For businesses that have several buildings on a property, employment figures may be stored at one building address. The property-based approach allows an analysis of employment by Planning District (see Appendix A) and other geographic boundaries.

A concerted effort is made to collect data for businesses thought to have 100 or more employees, therefore, it was assumed that for the most part, the remaining businesses with no employment data are smaller establishments. To estimate total employment in the City of Mississauga, an adjustment factor is applied to those businesses with no employment. To better reflect the characteristics of the businesses located within each Planning District, the adjustment factor that is applied depends on whether the business is located in a Residential or Employment District. The Residential District adjustment factor is calculated using the average number of employees for businesses with less than 100 employees in all Residential Planning Districts. This overall adjustment factor is then applied to businesses with no employment data located in Residential Districts. The Employment District adjustment factor is unique to each Employment Planning District and is calculated based on the average number of employees for businesses with less than 100 employees within each Employment District. This unique adjustment factor is then applied to those businesses with no employment within each Employment Planning District. The Residential District adjustment factor and Employment District adjustment factors are outlined in Appendix B.

¹ A mailout or telephone survey was administered to businesses with 100 or more employees, if existing employment data was greater than 2 years old, if no employment data was recorded for the business or if the business was part of a sector selected to be profiled.

2.0 EMPLOYMENT DATA – 2008

This section presents a profile of businesses and employment based on results from the 2008 Employment Survey, as well as a comparison to the Census definition of employment.

2.1 Total Employment

Employment² in the City of Mississauga, based on the 2008 Employment Survey, was 401,285. Employment data for 18,750 businesses or 88% of the 21,380 operating businesses were obtained. When the employment figure of 401,285 is adjusted to more closely reflect the Census definition of employment to consider persons with multiple jobs and to include home-based businesses, the estimate of total employment is 427,165³ (see Table 1). This is a difference of 5% from the June 2008 Growth Forecast projection of 450,100 employees in the City of Mississauga.

Table 1 on page four summarizes employment and population information. It shows that with a projected population of 728,000 and employment of 427,165, Mississauga has an employment ratio of .59. That is, for every 100 residents of the City, there were 59 local jobs. This table also includes data from the Labour Force Survey by Statistics Canada which shows that with a participating labour force of 401,050, Mississauga must import a net labour force of approximately 26,115 persons. When consideration is made for a portion of the participating labour force that is unemployed, about 7.2%, the imported labour force is approximately 55,000 employees. These figures indicate that the City is meeting the population and employment objective in Mississauga Plan regarding being a net importer of employment.

² Employment was estimated based on data contained in the Mississauga Employment Database, data from the 2008 Employment Survey, and estimates made for businesses for which employment data were not available (see Appendix B for the factors that were applied to these businesses). Part-time positions have been converted to full-time equivalents, based on the assumption that two part-time positions are equivalent to one full-time position. This does not include home-based businesses.

³ The following modifications were made to the 2008 Employment Survey employment to reflect the Census definition of employment: 40% of total part-time employment was excluded to account for individuals holding multiple jobs and 80% of the estimated home-based businesses in the City of Mississauga in 2008 (based on the 2006 Census) was added. Home-based businesses are assumed to be 4% of the resident labour force.

Table 1: Population, Total Employment and Resident Labour Force, 2008*	
Employment from the 2008 Employment Survey	401,285
Census Adjustment ^a	25,880
Total Employment ^b	427,165
Total Population ^c	728,000
Resident Labour Force ^d	581,230
Participating Labour Force ^e	401,050
Employed Labour Force	372,175
Unemployed Labour Force ^f	28,875
Employment Ratio ^g	.59
Difference Between Total Employment and Participating Labour Force	26,115
Labour Import ^h	55,000

*numbers have been rounded

^a This figure accounts for multiple part-time jobs and home-based businesses.

^b This figure represents the 2008 Employment Survey total plus the Census adjustment.

^c Population figure is the 2008 Growth Forecast projection for June 2008 including the census undercount.

^d The Resident Labour Force is the population 15 years+ calculated from the 2008 Growth forecast projection for June 2008.

^e Participating Labour Force is the Resident Labour Force multiplied by the participation rate of 69% from the Labour Force Survey by Statistics Canada for June 2008.

^f Unemployed Labour Force is the Participating Labour Force multiplied by the unemployment rate 7.2% from the Labour Force Survey by Statistics Canada for June 2008.

^g Employment Ratio is total employment divided by the total population.

^h Labour Import refers to the total employment positions minus the employed labour force.

Analysis in subsequent sections is based on results from the 2008 Employment Survey and does not include modifications for the Census definition of employment.

2.1.1 Employment by Planning District

Figure 1 summarizes employment by Planning District. In this report, the Northeast and Gateway Planning Districts which are the two largest employment districts, have been subdivided into smaller geographical areas to provide a greater understanding of the businesses and employment characteristics within these districts and a better comparison to other Planning Districts.

Meadowvale Business Park and Northeast South represents just over 10% of total employment. This is followed by Gateway-South and Northeast-West each representing approximately 9% of employment positions. Together these four areas account for almost 40% of the City's employment opportunities.

2.1.2 Full-Time and Part-Time Employment⁴

Full-time employment is 90% of total employment. Meadowvale Business Park leads the percentage of full time employment with 11%, followed by Northeast-South and Northeast-West each with approximately 10% and Gateway-South with 9% of total full-time employment.

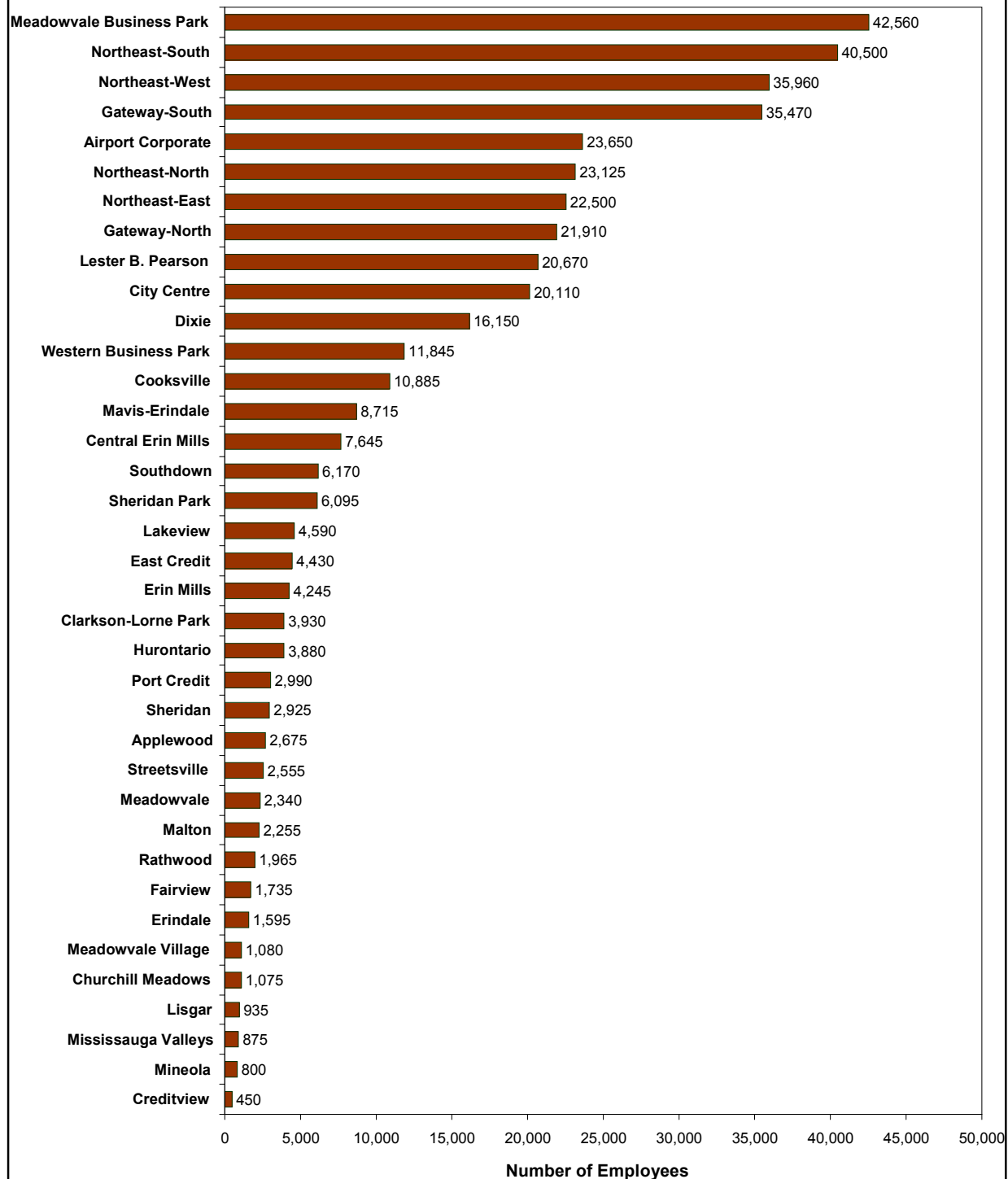
Part-time employment represents 10% of total employment. For this report, one part-time employment position is considered half or .5 of one full-time employment position. City Centre has the largest proportion of part-time employment with 9%. Outside of City Centre, Central Erin Mills (8%), Northeast-South (7%), Cooksville (7%), and Gateway-South (6%) also have significant concentrations of part-time positions.

The proportion of full-time positions within Planning Districts ranges from 61% in Central Erin Mills, 64% in Mississauga Valleys and 68% in Rathwood to 98% in Sheridan Park, 97% in Airport Corporate and in Northeast-East, 96% in Meadowvale Business Park and 95% in Northeast-West. Most Employment Districts, with the exception of Mavis-Erindale (88%), have 90% or greater of total employment represented by full-time positions. As expected, due to the large number of retail and service industry businesses, most Residential Districts have a higher proportion of total employment represented by part-time positions as compared to Employment Districts.

From 2007 to 2008, full-time employment for the City of Mississauga increased by approximately 4%. In the same time period, part-time employment decreased by 5%.

⁴ Full-time and part-time employment figures are based on businesses where employment information is available.

Figure 1: Employment by Planning District, 2008



2.2 Businesses and Vacancies

There were 21,380 businesses operating in Mississauga in 2008. In addition, the 2008 employment survey recorded 2,330 vacancies⁵ for a total of 23,710 business sites. Ten percent of total City business sites were vacant.

2.2.1 Businesses and Vacancies by Planning District

Table 2 and Figures 2a and 2b provide a summary of existing businesses and vacancies by Planning District. Map 1 shows the location of vacancies in the City.

Northeast-West has the largest concentration of businesses with 2,235 and Northeast-South with 2,110 each with 10% of the total number of businesses. This is followed by Northeast-North with 1,555 and Dixie with 1,515 each with 7% of total businesses.

The largest proportion of total City vacancies are found in districts that have the largest concentration of businesses. These are Northeast-West with 14% or 330 vacancies, Northeast-South with 9% (205 vacancies), Northeast-North with 8% (195 vacancies) and Dixie with 7% (165 vacancies) of total City vacancies.

With the exception of Northeast-West, these areas do not reflect the highest vacancies when vacancies are viewed as a percent of total business sites within each district. The highest vacancies as a percent of total business sites within the Planning District are Northeast-East and Mineola, each with a vacancy of 19%. Vacancies in Northeast-West, Gateway-North and Airport Corporate as a percentage of business sites are 13%. The majority of vacancies in Northeast-East and Airport Corporate occur within major office buildings while in Northeast-West and Gateway-North occur mostly within multi-unit industrial developments. For Mineola, vacancies occurred within multi-unit commercial and office developments.

From 2007 to 2008, vacancies in Mississauga Valleys, Sheridan and Streetsville increased. This increase is attributed to greater vacancies in office and multi-unit developments. A portion of the vacancies in Western Business Park are a result of new multi-unit industrial developments that were not fully occupied at the time of the employment survey.

⁵ Vacancies refer to vacant buildings, vacant floors and vacant units within multiple unit developments. Some condominium industrial units are recorded as vacant buildings.

Table 2: Businesses and Vacancies* by Planning District in 2008

Planning District	Total Business Sites	Businesses		Vacancies		
		# of Businesses	% of Businesses	# of Vacancies	% of City Vacancies	% of Vacancies in each Planning District
Northeast-West	2,565	2,235	10%	330	14%	13%
Northeast-South	2,315	2,110	10%	205	9%	9%
Northeast-North	1,750	1,555	7%	195	8%	11%
Dixie	1,680	1,515	7%	165	7%	10%
Meadowvale Business Park	1,390	1,260	6%	125	5%	9%
Gateway-South	1,250	1,130	5%	120	5%	10%
Cooksville	1,200	1,075	5%	120	5%	10%
Western Business Park	1,150	1,005	5%	145	6%	13%
City Centre	1,100	1,000	5%	100	4%	9%
Northeast-East	790	640	3%	150	6%	19%
Gateway-North	685	610	3%	75	3%	11%
Airport Corporate	660	590	3%	70	3%	10%
Lakeview	585	510	2%	75	3%	13%
Port Credit	545	500	2%	45	2%	8%
Mavis-Erindale	535	490	2%	45	2%	9%
Central Erin Mills	495	475	2%	20	1%	4%
Streetsville	475	435	2%	40	2%	9%
Clarkson-Lorne Park	440	415	2%	25	1%	6%
Applewood	425	400	2%	25	1%	6%
Hurontario	410	395	2%	15	1%	4%
Malton	375	340	2%	35	2%	9%
Lester B. Pearson	350	340	2%	10	0.4%	3%
East Credit	325	310	1%	15	1%	5%
Southdown	295	270	1%	30	1%	10%
Sheridan	295	265	1%	30	1%	10%
Rathwood	265	245	1%	25	1%	9%
Meadowvale	240	225	1%	15	0.6%	5%
Erin Mills	230	215	1%	15	0.6%	6%
Erindale	180	170	1%	15	0.6%	8%
Fairview	140	130	1%	5	0.3%	5%
Mineola	120	100	0.5%	25	1.0%	19%
Mississauga Valleys	90	80	0.4%	10	0.43%	11%
Lisgar	85	80	0.4%	10	0.3%	9%
Churchill Meadows	85	85	0.3%	0	0.0%	0%
Creditview	75	75	0.3%	0	0.0%	0%
Meadowvale Village	65	60	0.3%	1	0.04%	2%
Sheridan Park	60	55	0.3%	5	0.2%	10%
Total	23,710	21,380	100%	2,330	100%	10%

*Numbers may not add due to rounding. Vacancies refer to vacant buildings and to vacant units and vacant floors within multiple unit developments. Some condominium industrial units are recorded as vacant buildings.

Figure 2a: Businesses by Planning District, 2008

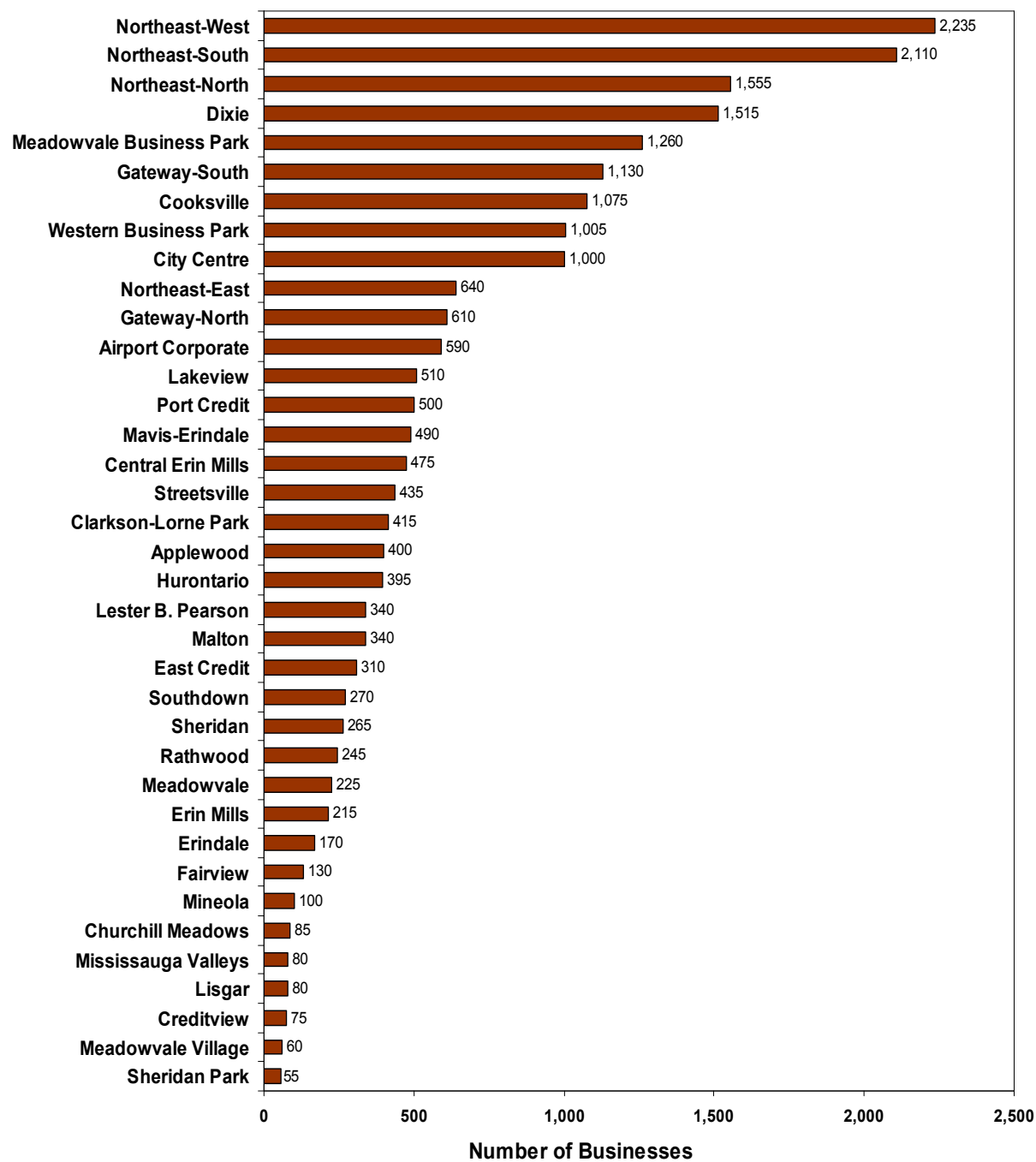
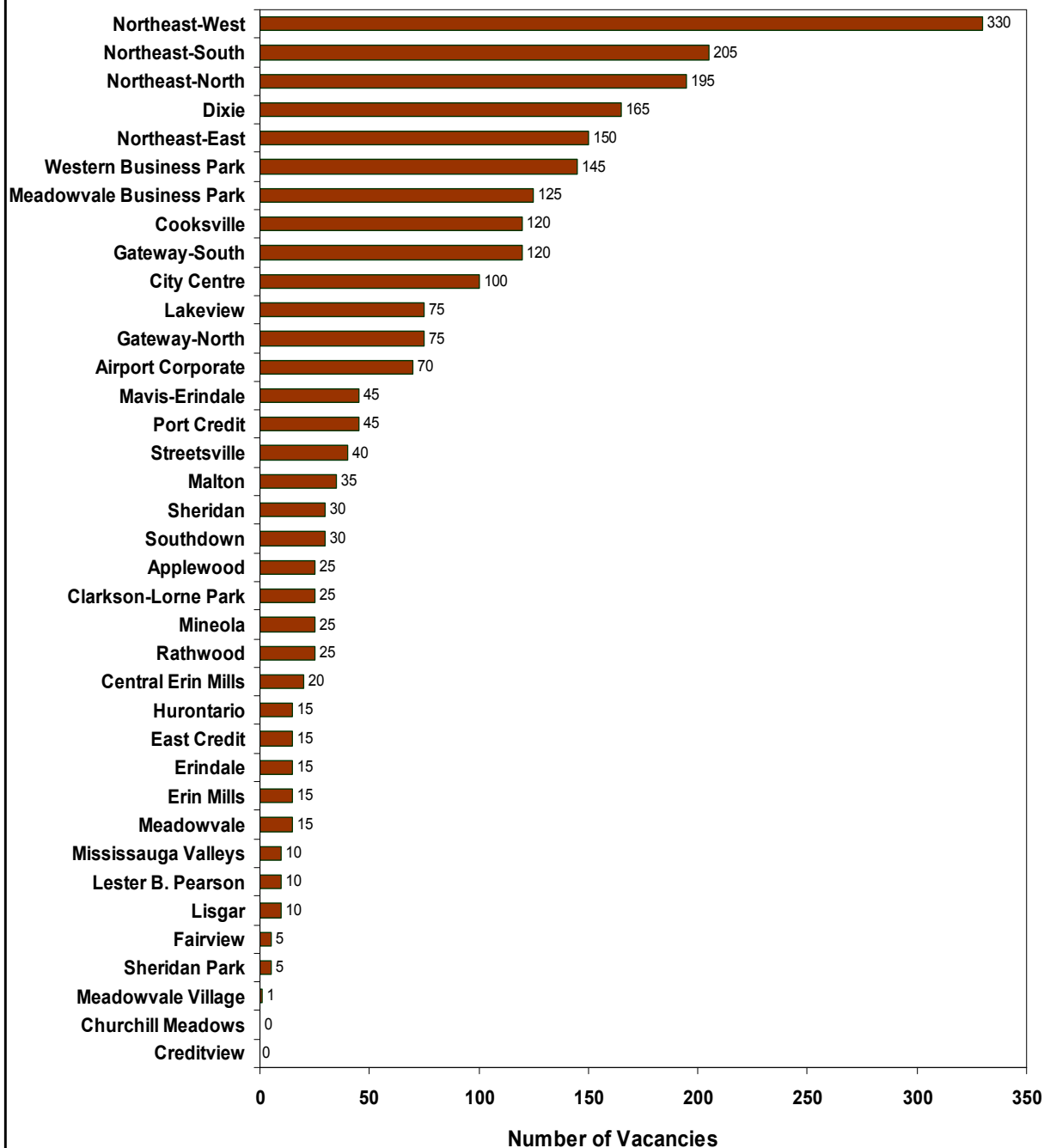
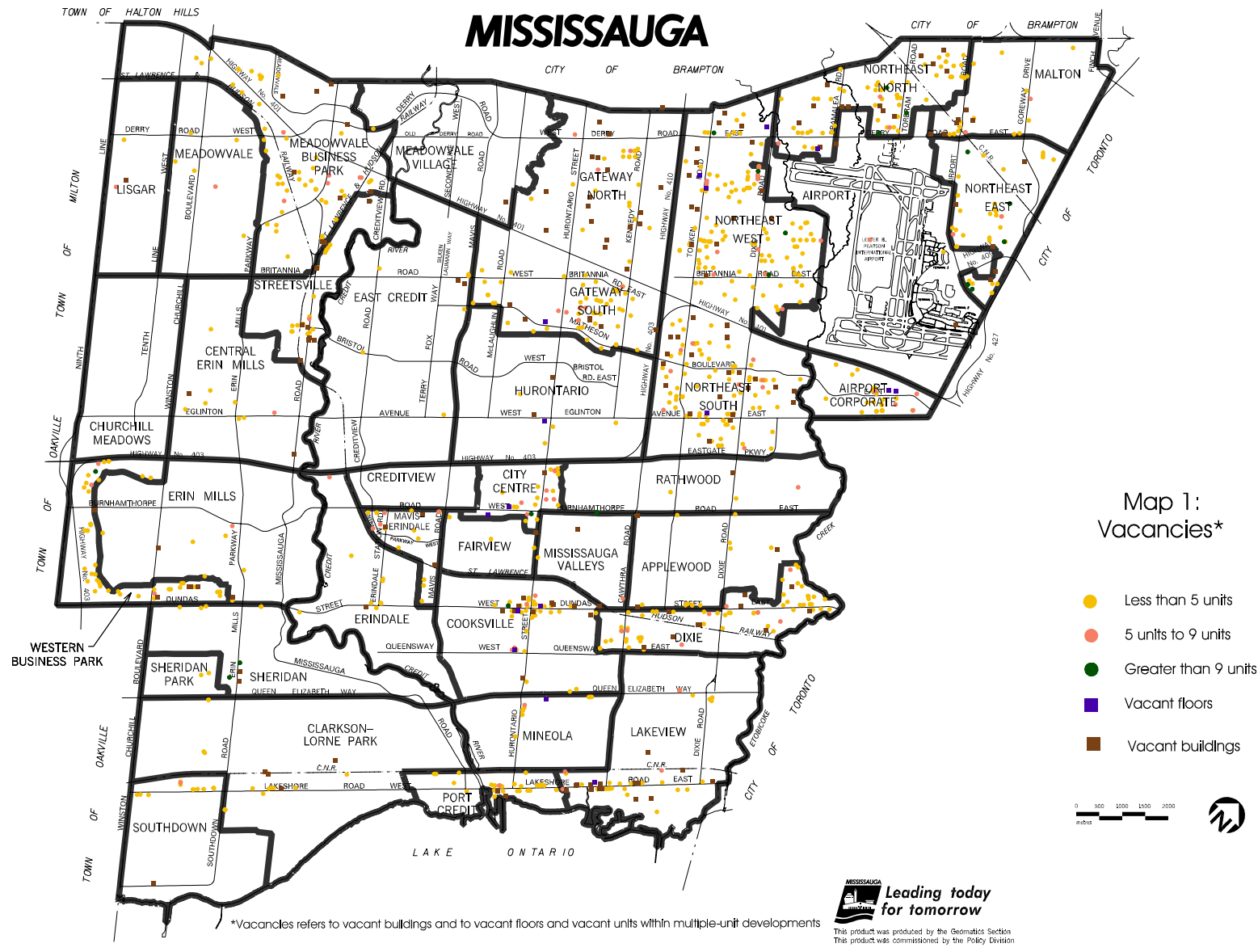


Figure 2b: Vacancies by Planning District, 2008



MISSISSAUGA



*Vacancies refers to vacant buildings and to vacant floors and vacant units within multiple-unit developments

2.3 Businesses by Business Size

The distribution of businesses by Planning District as well as the number and percent of employees for 2008 are shown in Tables 3 and 4 and illustrated in Figures 3a to 3d.

The City's business profile is dominated by small businesses. Forty-three percent of all businesses have fewer than five employees. However, smaller firms do not constitute a large portion of total employment. Firms with fewer than five employees represent only 5% of total jobs or 21,945 employment positions. Seventy-two percent of the City's businesses are establishments of less than 20 employees but these represent only 19% of the total employment positions (See Tables 3 and 4).

The largest portion of the employment base in Mississauga is currently found in mid-sized firms between 20 and 299 employees. These businesses represent only 15% of total businesses but constitute 47% of the work force or 186,980 employment positions.

Table 3 summarizes the number of businesses by business size in each Planning District and Figures 3a and 3b illustrate these sizes for the City. It shows the dominance of firms with less than 5 employees, particularly in the Residential Districts.

Table 4 summarizes the number of employees by the business size in each Planning District and Figures 3c and 3d illustrate these sizes for the City. It is evident from this table that mid-sized firms with 20 to 299 employees represent the largest portion of the employment base, particularly in the Employment Districts. This is an expected result as mid-sized firms tend to be related to industrial/manufacturing type companies, which generally locate in Employment Districts.

Businesses with 300 or more employees represent less than 1% of the total number of businesses but constitute 28% of the employment base. They are generally concentrated in the Employment Districts and City Centre. There is a marked presence of these businesses in the northern Employment Districts along the Highway 401 corridor. A small number of very large businesses with a thousand or more employees make a significant contribution to the City's employment base. There are only 25 such businesses representing 0.1% of the total businesses in the City, yet they account for 54,020 jobs (13% of total jobs). These businesses include the two hospitals, the University of Toronto Mississauga, Air Canada, Greater Toronto Airport Authority, bio-medical firms, financial businesses, government and manufacturing among others. Map 2 illustrates the location of businesses with 300 or more employees and the range of employees per location. A listing of these businesses is provided in Appendix C.

Finally, it is noted that all Planning Districts have a representation of businesses with less than 300 employees. The number of businesses across the City with these ranges of employees would also provide for a range of employment opportunities. The distribution of businesses across the City addresses Mississauga's Strategic Plan objective to maintain a variety of employment opportunities.

Table 3: Number of Businesses by Employment Range and Planning District in 2008*

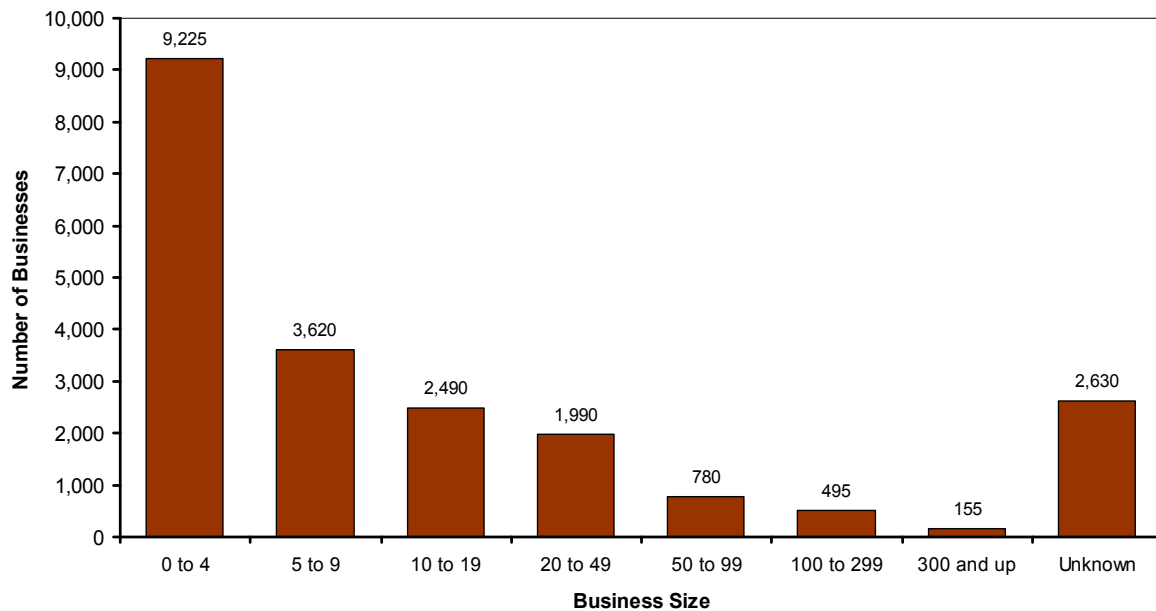
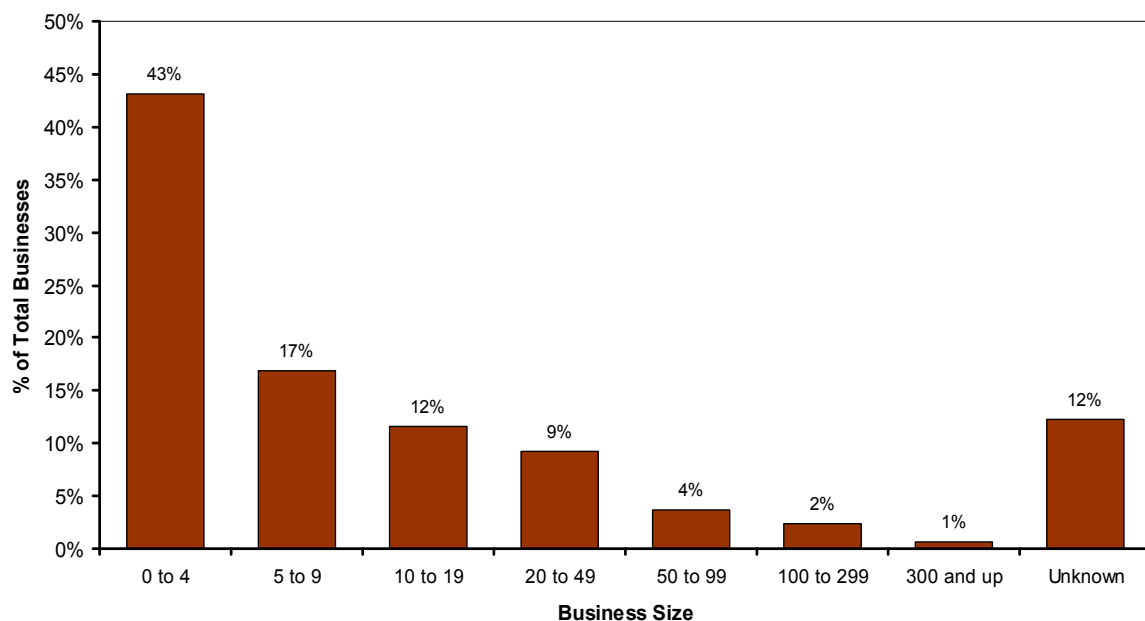
Planning District	Business Size (based on number of employees)										Total
	0-4	5-9	10-19	20-49	50-99	100-299	300-499	500-999	1000+	Unknown	
Northeast-West	845	365	285	260	75	50	10	2	0	340	2,235
Northeast-South	815	380	280	180	65	35	5	1	5	340	2,110
Northeast-North	585	265	200	150	50	30	3	0	1	270	1,555
Dixie	695	245	155	95	35	20	2	1	0	270	1,515
Meadowvale Business Park	330	225	210	175	70	60	10	5	5	175	1,260
Gateway-South	315	205	175	145	70	50	15	5	2	145	1,130
Cooksville	735	130	55	40	15	6	2	0	1	100	1,075
Western Business Park	395	210	160	80	30	5	0	0	1	125	1,005
City Centre	365	220	140	85	40	30	4	3	1	115	1,000
Northeast-East	140	100	100	5	65	35	5	5	0	90	640
Gateway-North	125	95	100	130	50	30	10	3	0	75	610
Airport Corporate	160	100	85	75	45	45	10	3	2	60	590
Lakeview	295	87	40	35	10	5	0	0	0	40	510
Port Credit	340	65	30	15	5	4	0	0	0	40	500
Mavis-Erindale	250	75	45	40	25	15	2	0	1	45	490
Central Erin Mills	255	110	40	40	5	10	0	0	1	20	475
Streetsville	300	60	35	15	2	2	0	0	0	25	435
Clarkson-Lorne Park	240	55	45	35	10	4	0	0	0	20	415
Applewood	270	55	20	20	10	1	0	0	0	25	400
Hurontario	205	65	45	35	10	4	0	0	0	30	395
Lester B. Pearson	75	55	25	25	10	10	4	1	3	130	340
Malton	245	35	15	20	2	2	0	0	0	15	340
East Credit	145	60	25	35	10	5	1	0	0	20	310
Southdown	115	55	30	20	10	10	5	0	0	20	270
Sheridan	150	45	20	15	3	4	0	1	0	20	265
Rathwood	155	40	15	15	10	0	0	0	0	10	245
Meadowvale	125	40	20	25	4	3	0	0	0	10	225
Erin Mills	120	40	15	20	5	5	1	0	1	10	215
Erindale	100	20	15	10	5	2	0	0	0	15	170
Fairview	64	36	10	10	4	3	0	0	0	3	130
Mineola	55	15	10	5	3	0	0	0	0	10	100
Churchill Meadows	55	10	4	5	5	2	0	0	0	2	85
Lisgar	45	15	5	5	3	2	0	0	0	1	80
Mississauga Valleys	50	15	5	7	2	1	0	0	0	2	80
Creditview	45	5	5	5	0	0	0	0	0	5	75
Meadowvale Village	25	15	4	10	3	2	0	0	0	2	60
Sheridan Park	10	3	10	10	5	10	3	1	1	4	55
Total Businesses	9,225	3,620	2,490	1,990	780	495	95	35	25	2,630	21,380
% of Total Businesses	43%	17%	12%	9%	4%	2%	0.4%	0.2%	0.1%	12%	100%

*Numbers may not add due to rounding. Unknown are businesses with no employment data.

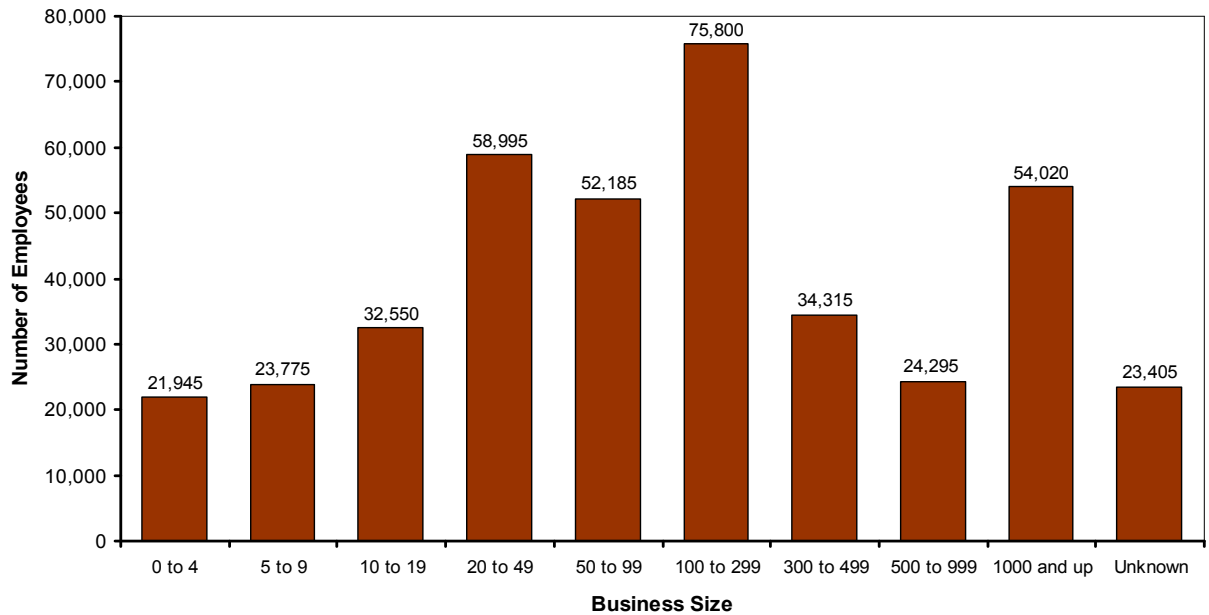
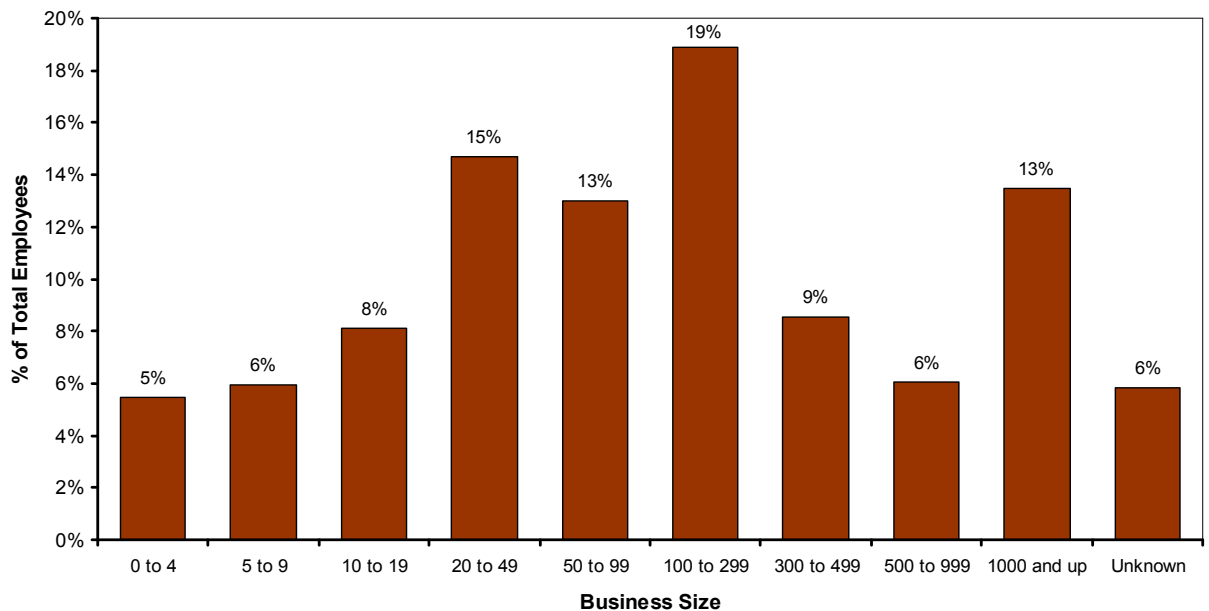
Table 4: Number of Employees by Employment Range and Planning District in 2008*

Planning District	Business Size(based on the number of employees)										Total
	0-4	5-9	10-19	20-49	50-99	100-299	300-499	500-999	1000+	Unknown	
Meadowvale Business Park	870	1,480	2,745	5,140	4,630	10,200	3,430	4,410	7,570	2,085	42,560
Northeast-South	1,970	2,505	3,685	5,215	4,420	5,310	1,730	550	11,995	3,125	40,500
Northeast-West	2,000	2,395	3,665	7,745	4,955	7,640	2,825	1,525	0	3,210	35,960
Gateway-South	830	1,355	2,255	4,190	4,490	7,520	5,830	3,975	3,100	1,930	35,470
Airport Corporate	420	685	1,095	2,245	3,210	6,930	2,750	2,000	3,500	810	23,650
Northeast-North	1,345	1,710	2,570	4,255	3,350	4,940	1,020	0	1,410	2,520	23,125
Northeast-East	355	680	1,315	2,770	4,435	4,725	2,565	4,835	0	825	22,500
Gateway-North	340	600	1,270	3,780	3,385	4,950	4,885	1,750	0	950	21,910
Lester B. Pearson	230	360	340	695	880	1,280	1,615	665	13,640	970	20,670
City Centre	955	1,425	1,880	2,485	2,790	4,435	1,370	2,340	1,320	1,110	20,110
Dixie	1,605	1,595	1,935	2,760	2,240	2,885	660	700	0	1,770	16,150
Western Business Park	1,005	1,375	2,090	2,285	1,940	995	0	0	1,100	1,050	11,845
Cooksville	1,605	860	730	1,185	875	820	720	0	3,510	570	10,885
Mavis-Erindale	615	485	585	1,145	1,605	2,210	610	0	1,045	420	8,715
Central Erin Mills	665	735	510	1,145	450	1,250	0	0	2,795	95	7,645
Southdown	285	350	400	575	715	1,310	2,375	0	0	160	6,170
Sheridan Park	25	25	160	315	320	1,245	1,120	845	2,000	40	6,095
Lakeview	675	580	535	1,070	850	665	0	0	0	215	4,590
East Credit	355	420	325	1,165	870	805	350	0	0	140	4,430
Erin Mills	315	270	235	645	415	840	455	0	1,030	50	4,245
Clarkson-Lorne Park	545	360	600	1,010	795	505	0	0	0	110	3,930
Hurontario	480	425	645	1,155	480	535	0	0	0	155	3,880
Port Credit	690	460	375	365	315	550	0	0	0	245	2,990
Sheridan	365	305	285	500	190	470	0	700	0	110	2,925
Applewood	585	345	305	625	560	120	0	0	0	140	2,675
Streetsville	650	370	455	380	155	430	0	0	0	120	2,555
Meadowvale	295	280	315	785	275	355	0	0	0	40	2,340
Malton	525	230	215	745	130	305	0	0	0	110	2,255
Rathwood	335	260	240	430	655	0	0	0	0	50	1,965
Fairview	165	235	135	450	305	430	0	0	0	20	1,735
Erindale	205	125	225	310	380	245	0	0	0	105	1,595
Meadowvale Village	65	120	60	370	205	265	0	0	0	5	1,080
Churchill Meadows	130	50	50	230	370	230	0	0	0	15	1,075
Lisgar	105	90	70	245	170	250	0	0	0	5	935
Mississauga Valleys	120	80	75	255	165	160	0	0	0	15	870
Mineola	125	120	120	160	215	0	0	0	0	65	800
Creditview	105	45	75	175	0	0	0	0	0	50	450
Total Employees	21,945	23,775	32,570	58,995	52,185	75,800	34,315	24,295	54,020	23,405	401,285
% of Total Employees	5%	6%	8%	15%	13%	19%	9%	6%	13%	6%	100%

*Numbers may not add due to rounding. Unknown are the estimated number of employees for those businesses with no employment data, based on the adjustment factors in Appendix B.

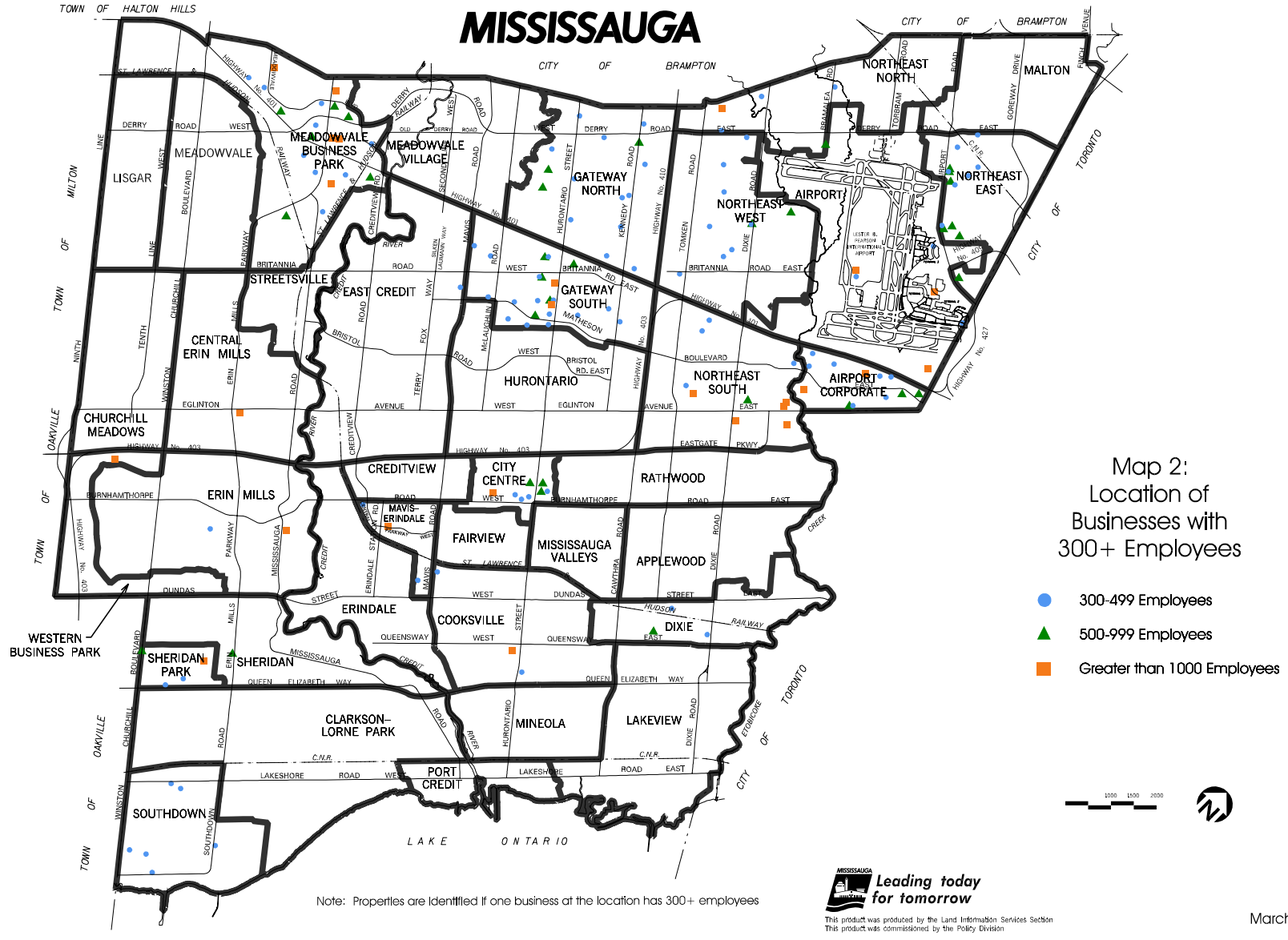
Figure 3a: Number of Businesses by Business Size, 2008**Figure 3b: Percentage of Businesses by Business Size, 2008**

"Unknown" are businesses with no employment data.

Figure 3c: Number of Employees by Business Size, 2008**Figure 3d: Percentage of Employees by Business Size, 2008**

"Unknown" are businesses with no employment data.

MISSISSAUGA



2.4 Businesses and Employment by Business Classification

This section reviews the types of business activities that constitute Mississauga's employment base. Table 5 and Figures 4a and 4b summarize the businesses and number of employees by the type of business activity. Businesses were categorized using the North American Industrial Classification System (NAICS)⁶.

The retail, wholesale and manufacturing sectors have the largest number of businesses and employ a large number of employees. Another business sector of importance to Mississauga is transportation and warehousing. While transportation and warehousing is ranked eighth in terms of the number of businesses, it has the third largest number of employees followed by professional, scientific and technical services. These business sectors are highlighted in this section. Figure 5 illustrates the number of businesses by employment range, for the top four business sectors in terms of employment.

The largest concentration of businesses in Mississauga is in the retail trade sector. It comprises 13% of the total business activities, but only consists of 6% of total employment. Retail trade businesses are smaller establishments, with 80% (approximately 2,250 businesses) of these businesses having fewer than 10 employees.

Wholesale trade is the second largest sector. A total of 13% of businesses and 14% of employment positions are in wholesaling establishments. A large proportion of wholesaling firms employ a small number of staff, that is, 58% (1,910 businesses) of wholesalers have fewer than 10 employees; 77% (2,435 businesses) have fewer than 20 employees.

Manufacturing is the third largest sector in the City, accounting for 13% of businesses and 20% of all employees. Many manufacturing firms are smaller firms with less than 20 employees. A total of 70% of the manufacturing firms (1,875 businesses) have less than 20 employees. There are also a significant number of firms between 20 and 49 employees (15%, or approximately 415 businesses). There are a number of manufacturing firms that employ a large number of employees. One percent of manufacturing businesses (38 businesses) employ more than 300 employees.

The professional, scientific and technical services sector is growing in Mississauga. It comprises 7% of total business activities, as well as 7% of employment positions. Eighty percent of total businesses (1,175) have fewer than 20 employees and almost half of the firms (49%) have fewer than 5 employees.

The transportation and warehousing sector consists of only 5% of total businesses, but represents 12% of the total employment. Transportation and warehousing firms have a broad distribution in terms of the size of their operations. While firms of under 5 employees make up the largest portion of these businesses (33%), a significant number of firms have employment between 5 and 9 employees (19%), 10 to 19 employees (16%) and 20 to 49 employees (14%).

⁶NAICS is a classification system used to describe businesses' economic activities. This system has been designed by Statistics Canada to compile statistics. Appendix D defines the various business sectors.

Table 5: Businesses and Employment by Business Classification, 2008*				
Business Classification	# of Businesses	% of Businesses	# of Employees	% of Employees
Retail Trade	2,795	13%	25,310	6%
Wholesale Trade	2,765	13%	56,785	14%
Manufacturing	2,700	13%	78,410	20%
Other Services	2,075	10%	11,380	3%
Professional, Scientific and Technical Services	1,455	7%	27,255	7%
Accommodation and Food Services	1430	7%	17,160	4%
Health Care and Social Assistance	1370	6%	17,770	4%
Transportation and Warehousing	995	5%	46,580	12%
Finance and Insurance	775	4%	23,650	6%
Administrative and Support and Waste Management	680	3%	14,040	3%
Educational Services	625	3%	15,285	4%
Construction	540	3%	8,445	2%
Real Estate and Rental and Leasing	450	2%	7,770	2%
Arts, Entertainment and Recreation	210	1%	3,025	1%
Information and Cultural Industries	165	0.8%	11,470	3%
Public Administration	105	0.5%	7495	1.9%
Management of Companies and Enterprises	65	0.3%	7425	1.9%
Utilities	10	0.05%	400	0.1%
Primary Industry	5	0.03%	20	0.005%
Unknown	2,170	10%	21,605	5%
Total	21,380	100%	401,285	100%

*Numbers may not add due to rounding. Percentages are calculated based on unrounded figures. The unknown classifications are businesses where a NAICS code is not assigned.

Figure 4a: Businesses by Business Classification, 2008

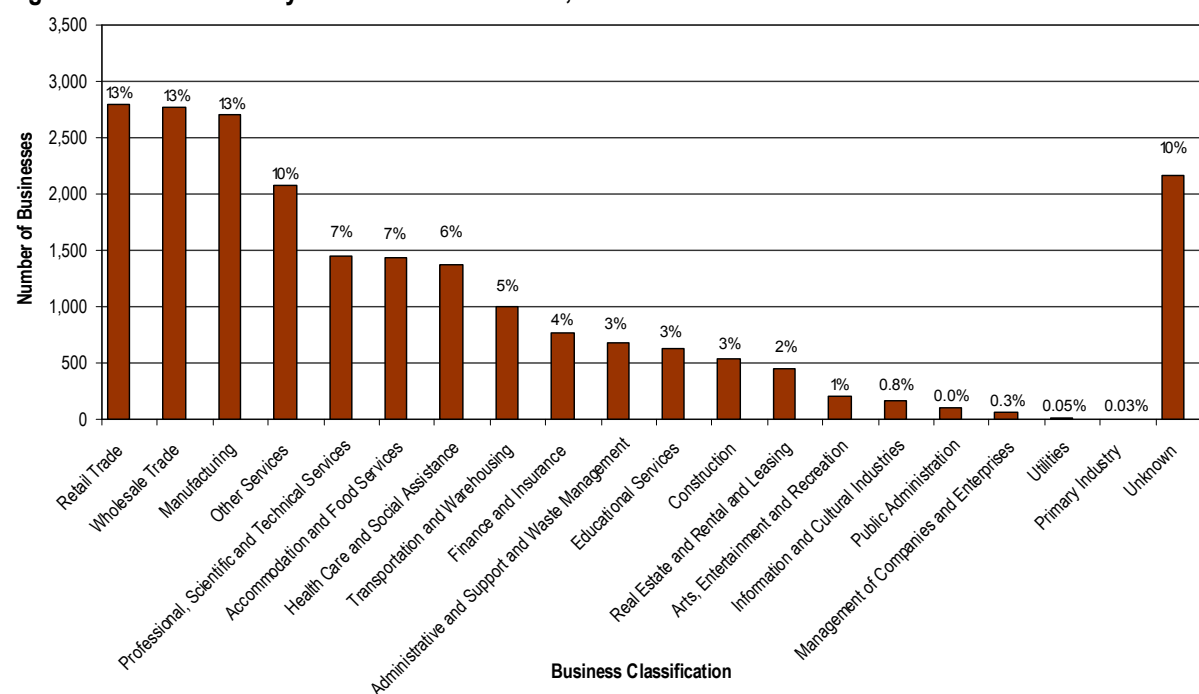
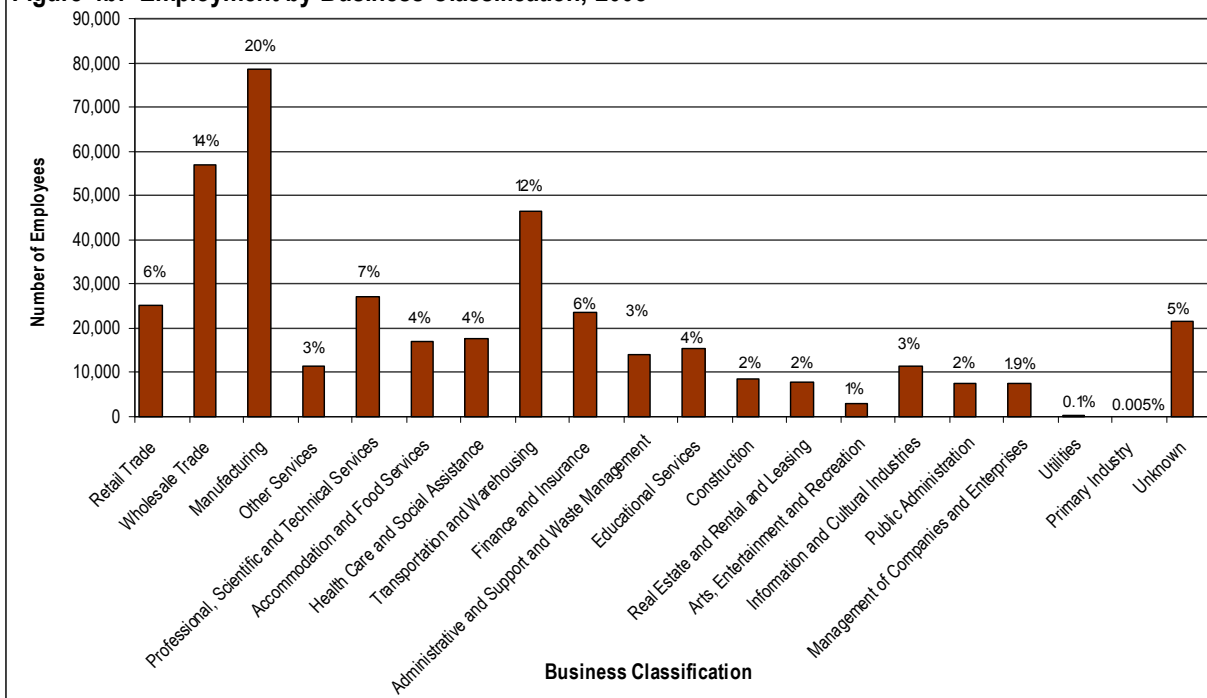
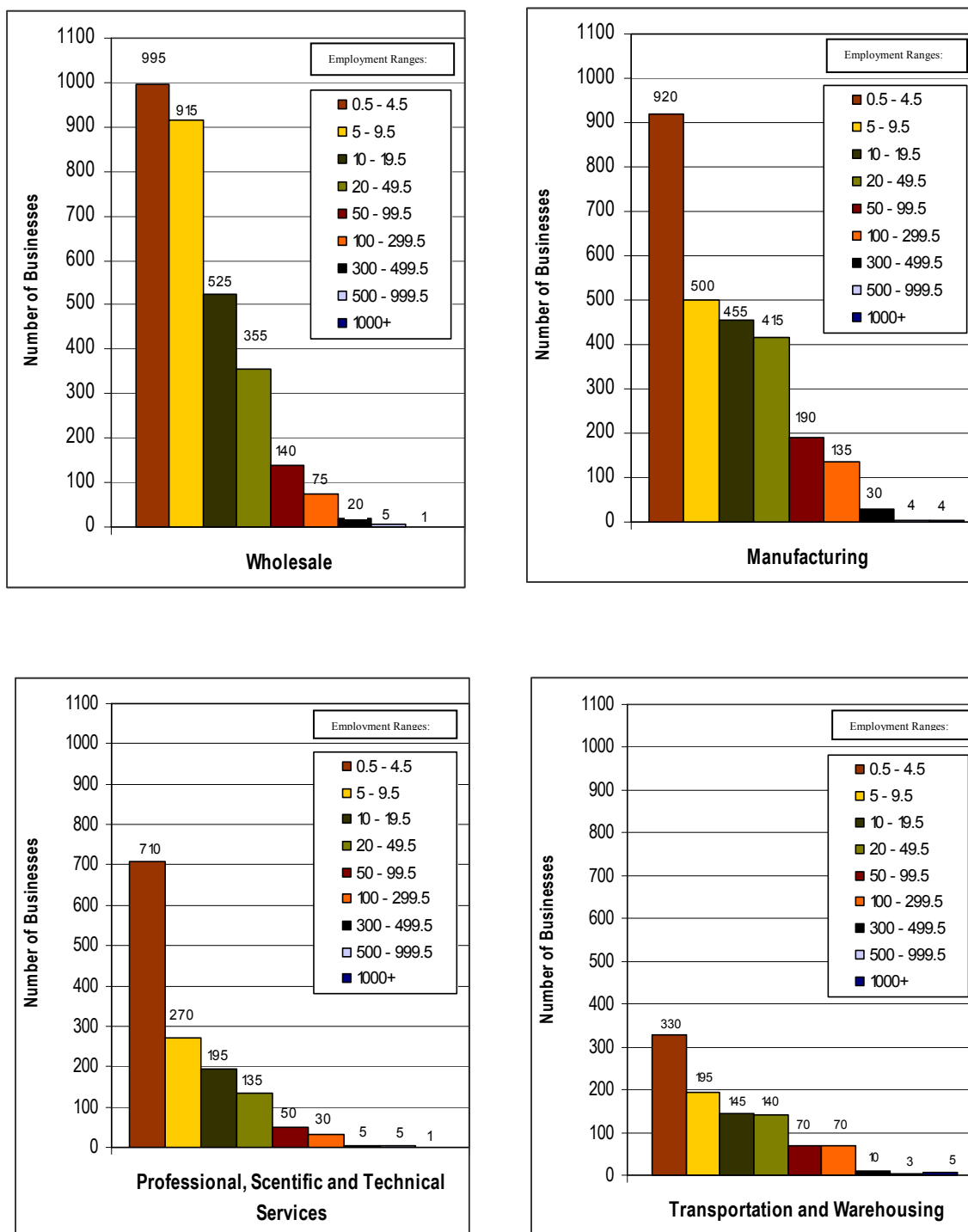


Figure 4b: Employment by Business Classification, 2008



Number of businesses has been rounded. A business size is assigned to businesses that have employment data and a NAICS code. The "Unknown" are businesses where a NAICS code is not assigned.

Figure 5: Business Classification by Employment Ranges, 2008

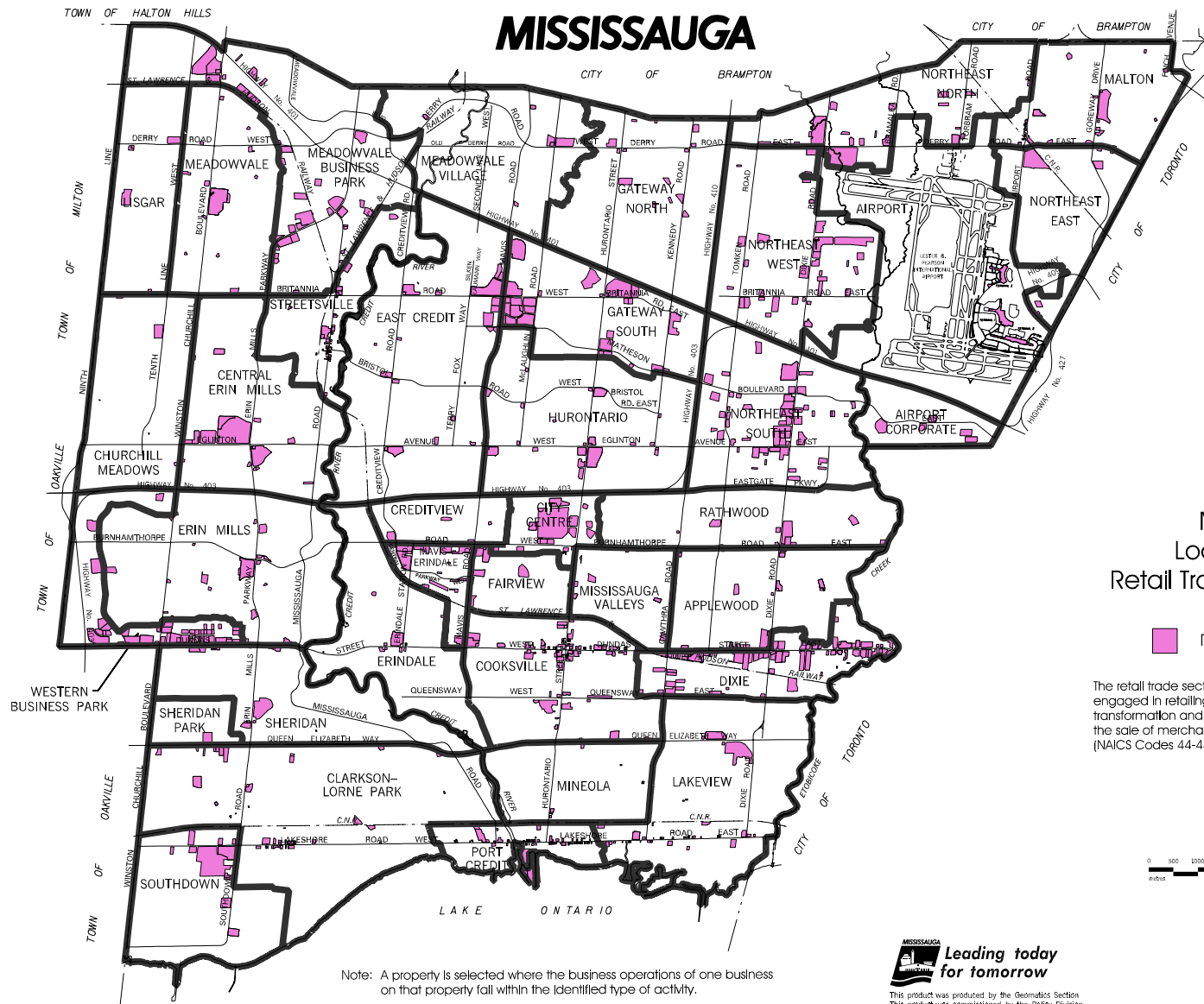
Number of businesses has been rounded. A business size is assigned to businesses that have employment data and a NAICS code is not assigned

Maps 3, 4, 5, 6 and 7 indicate the location of retail trade, wholesale trade, manufacturing, professional, scientific and technical services and transportation and warehousing businesses in Mississauga. The businesses are mapped by the properties on which they are located. A property may have multiple businesses and multiple addresses and a business may fall on more than one property. The property is displayed if there is a NAICS code assigned to a business and where there is a property identification number. Where a property has multiple businesses, the parcel will be highlighted if one business on that property is within the selected type of activity. As a result, a parcel may be represented on more than one map if there are multiple business activities at that location.

The maps illustrate the concentrations of businesses by sector. Wholesale trade and transportation and warehousing companies are apparent in the Employment Districts and are concentrated in the north-eastern part of the City. Retail trade and professional services businesses are dispersed and are distributed throughout the City. Similar to wholesaling in its locational characteristics, manufacturing is also concentrated in Employment Districts. Like wholesale trade and manufacturing, the transportation and warehousing sector is found throughout the City's Employment Districts, with a concentration evident in the Northeast areas. The professional, scientific and technical services sector is also found throughout the City's Employment Districts, with a significant concentration in Sheridan Park.

Together, wholesaling, manufacturing, retailing, transportation and warehousing and professional, scientific and technical services, make up approximately 51% of businesses and 59% of employment positions in the City. Although this is a substantial portion of total employment and businesses, there is good representation in Mississauga from all nineteen business sectors. The presence of firms in all sectors reflects the diversity of employment and business activity in the City and addresses the Strategic Plan initiative that Mississauga maintains a dynamic and diverse economic base.

MISSISSAUGA



Map 3:
Location of
Retail Trade Businesses

 Retail Trade Areas

The retail trade sector comprises establishments engaged in retailing merchandise generally without transformation and rendering services incidental to the sale of merchandise.
(NAICS Codes 44-45)



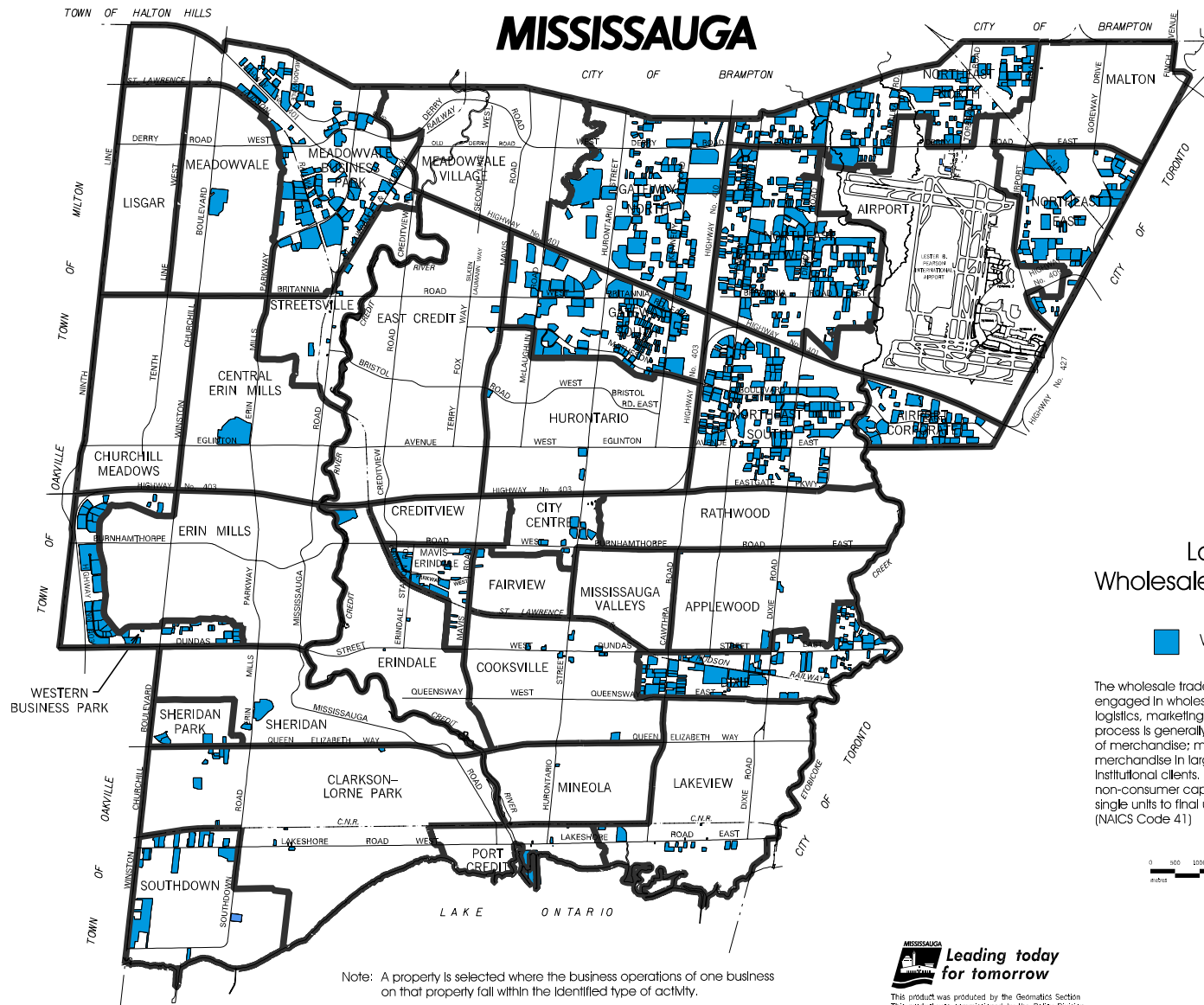
Note: A property is selected where the business operations of one business on that property fall within the identified type of activity.

MISSISSAUGA
*Leading today
for tomorrow*

This product was produced by the Geomatics Section
This product was commissioned by the Policy Division

March 2009

MISSISSAUGA



Map 4:
Location of
Wholesale Trade Businesses

Wholesale Trade Areas

The wholesale trade sector comprises establishments engaged in wholesaling merchandise and providing logistics, marketing and support services. The wholesaling process is generally an intermediate step in the distribution of merchandise; many wholesalers are organized to sell merchandise in large quantities to retailers, business and institutional clients. These may also include suppliers of non-consumer capital goods that sell merchandise in single units to final users. (NAICS Code 41)

0 500 1000 1500 2000
meters

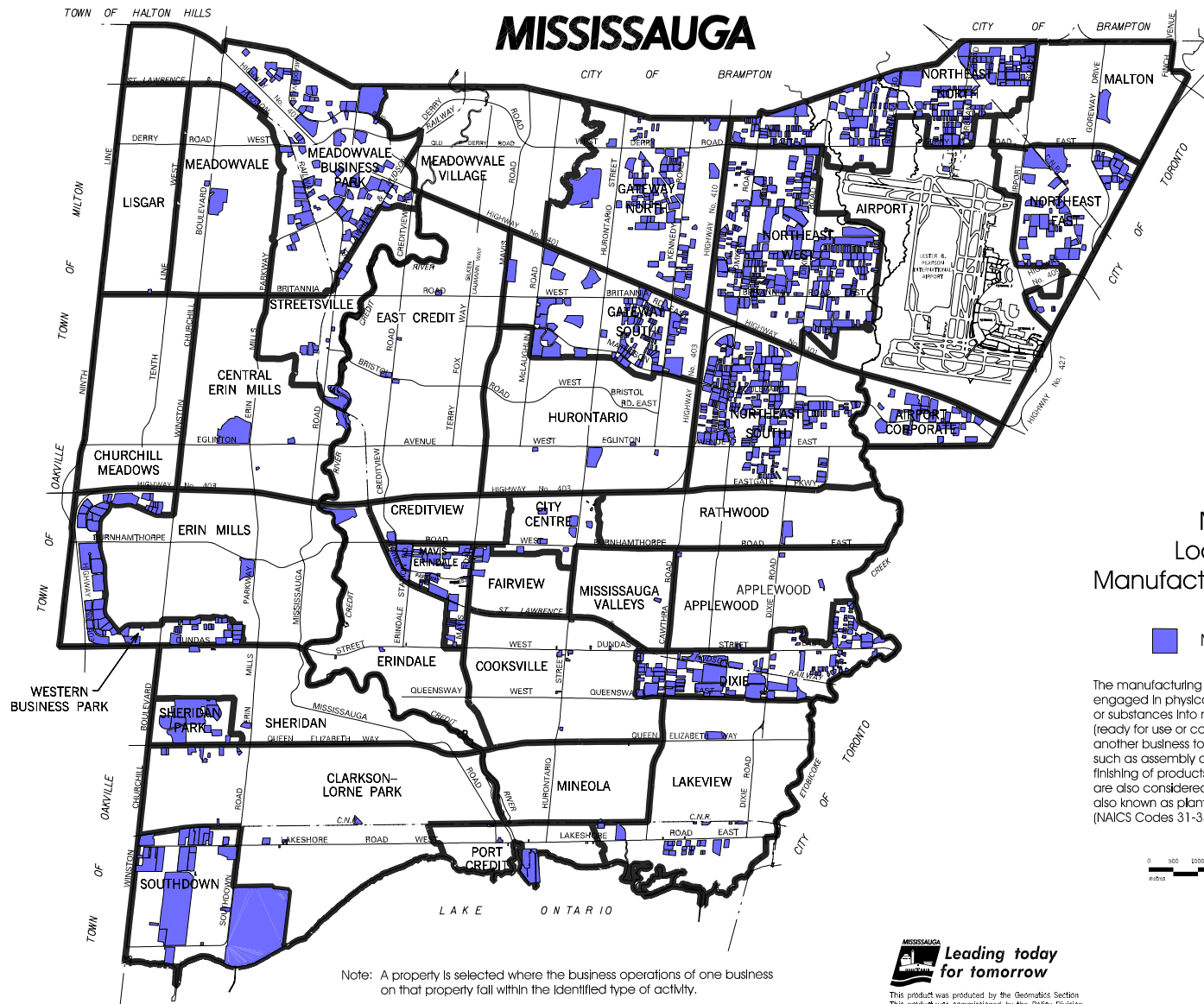


Leading today
for tomorrow

This product was produced by the Geomatics Section
This product was commissioned by the Policy Division

March 2009

MISSISSAUGA



Map 5:
Location of
Manufacturing Businesses

 Manufacturing Areas

The manufacturing sector comprises establishments engaged in physical or chemical transformation of materials or substances into new products. Products may be finished (ready for use or consumption), or semi-finished (ready for another business to further manufacture). Related activities such as assembly of component parts, blending and finishing of products (by dyeing, heat treating or plating) are also considered manufacturing. Manufacturing firms are also known as plants, factories or mills. (NAICS Codes 31-33)



Note: A property is selected where the business operations of one business on that property fall within the identified type of activity.

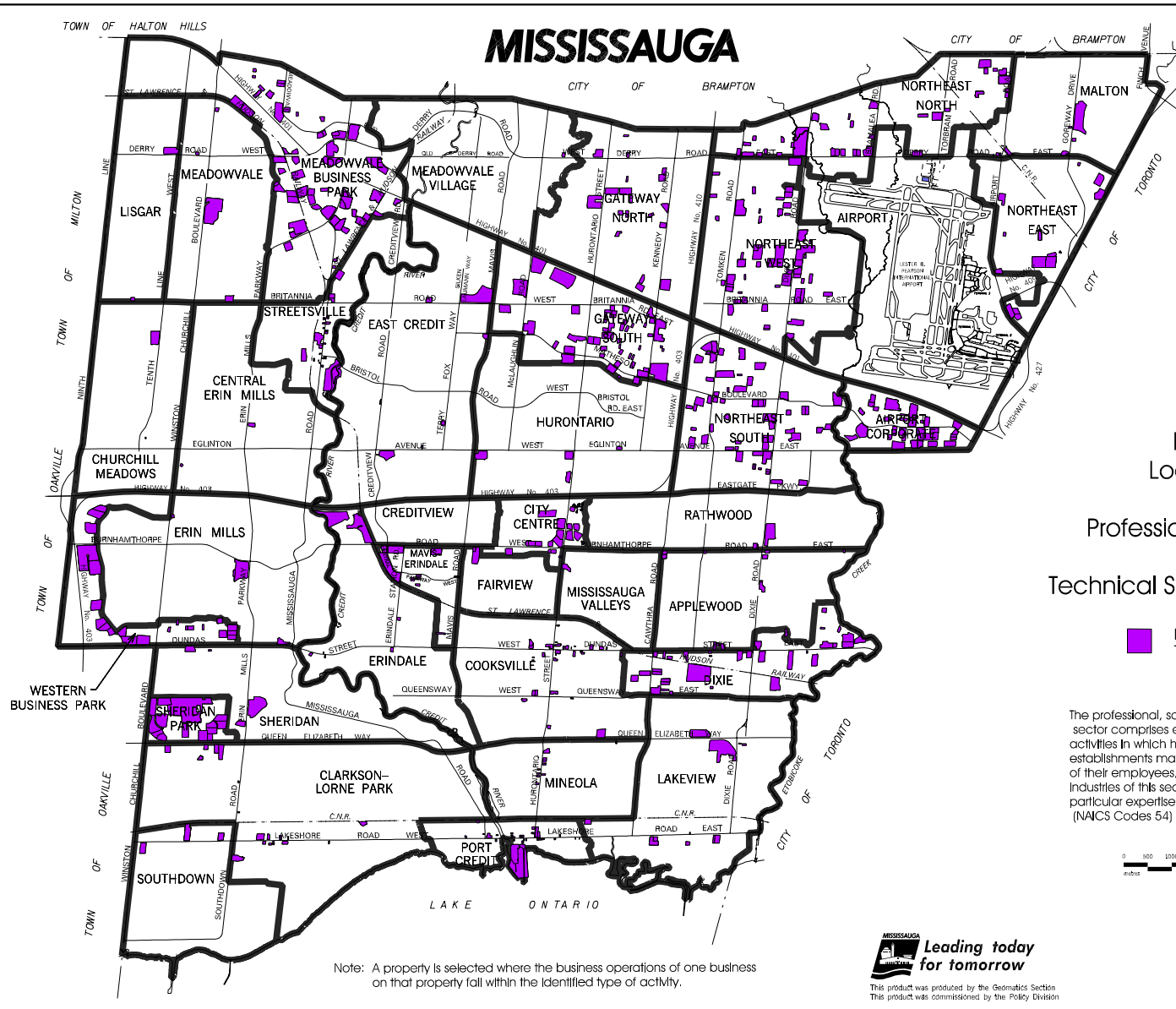


**Leading today
for tomorrow**

This product was produced by the Geomatics Section
This product was commissioned by the Policy Division

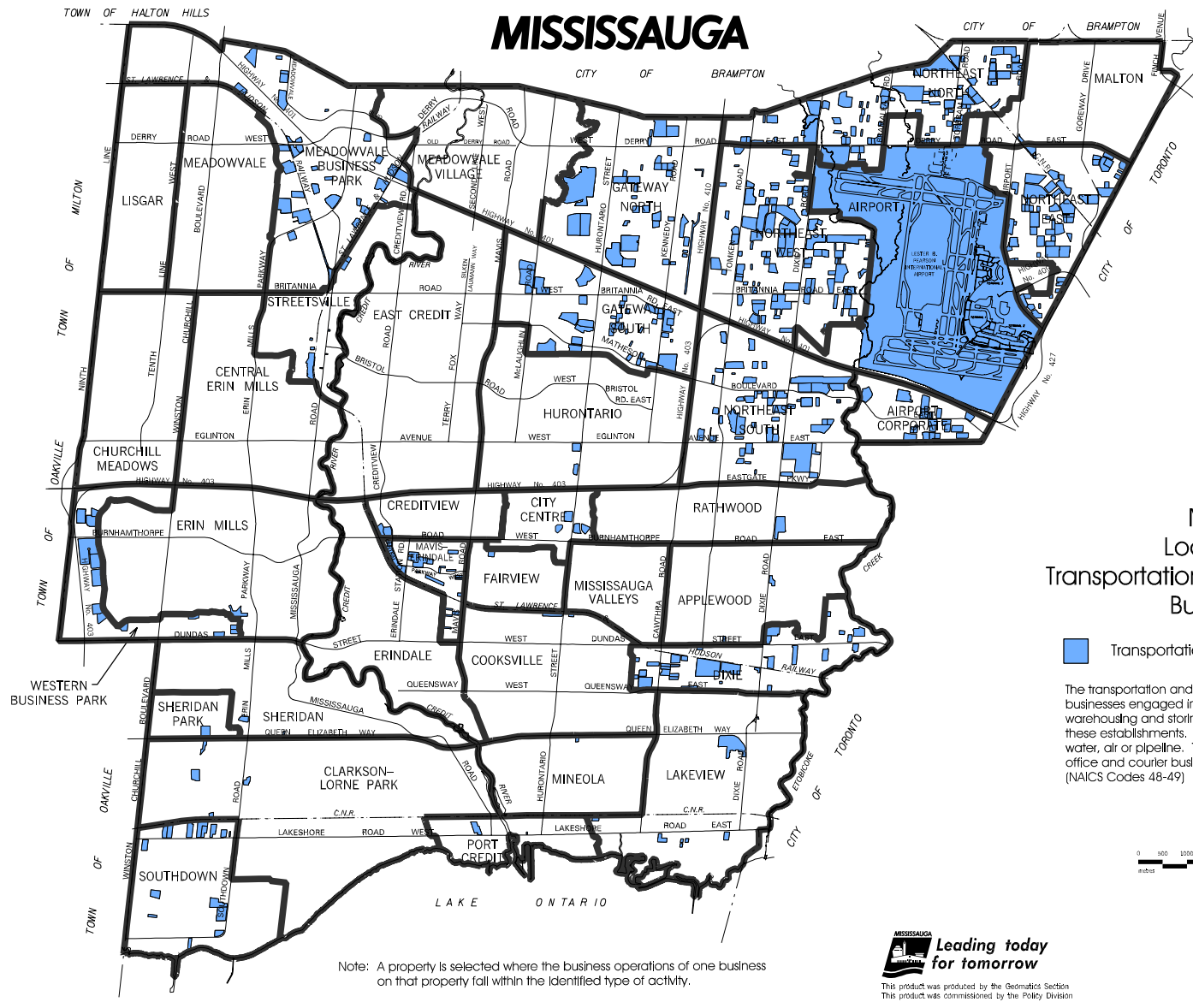
March 2009

MISSISSAUGA




Note: A property is selected where the business operations of one business on that property fall within the identified type of activity.

MISSISSAUGA



Map 7:
Location of
Transportation And Warehousing
Businesses

 Transportation and Warehousing Areas

The transportation and warehousing sector comprises businesses engaged in transporting passengers and goods, warehousing and storing goods, and providing services to these establishments. Transportation can be by road, rail, water, air or pipeline. This sector also includes national post office and courier businesses.
(NAICS Codes 48-49)

0 500 1000 1500 2000
metres



**Leading today
for tomorrow**

This product was produced by the Geomatics Section
This product was commissioned by the Policy Division

Note: A property is selected where the business operations of one business
on that property fall within the identified type of activity.

March 2009

2.5 Employment Density

Employment density refers to the number of employees in a geographic area, using the total employment of each traffic zone and the area of that traffic zone. Appendix E shows a map of the traffic zone boundaries. Employment density calculations by gross and net are listed by traffic zone in Appendix F.

Map 8 displays the gross employment density by traffic zone across the City. Gross area includes all land uses, whether they are developed or undeveloped lands (such as roads, vacant land and natural areas). The City's average gross employment density is 14 employees per hectare (5 employees per acre). Higher gross employment densities are noticeable in the Employment Districts and along highways and major roads. Employment Districts north of Highway 403 have higher gross employment density ranges of over 20 employees per hectare (over 8 per acre). The older Employment Districts in the southern part of the City, for the most part, have lower concentrations of employees. As expected, the residential areas have the lowest gross employment densities.

Map 9 illustrates net employment density. Net area includes lands developed for commercial, office, industrial, community/cultural, places of religious assembly, public institutional and school uses. It excludes residential, open space/greenbelt (such as golf courses), transportation right-of-ways, walkways, utilities/public works, farms, vacant lands, natural areas and "other" land uses. The city-wide net employment density is 45 employees per hectare (18 per acre).

Both maps show areas of large concentrations of employment. Traffic zones 13 and 32 have very high densities. The Credit Valley Hospital located at Erin Mills Parkway and Eglinton Avenue West and the Trillium Health Centre at Hurontario Street and Queensway West fall within these zones.

It is not surprising to find that the traffic zones with multiple storey buildings are areas of high employment concentration. The Emerald Business Centre and the Eglinton Commercial Centre located north of Highway 403 and on the west side of Hurontario Street (traffic zone 86) has office buildings with almost 200 businesses. In the City Centre District (traffic zones 72, 79, and 215), there are office buildings, a government institution, and a shopping centre, making it one of the most dense employment areas in Mississauga. Traffic zones 72 and 215 located at the south west and north east corners of Hurontario Street and Burnhamthorpe Road West/East, contain office centres that have multiple office buildings such as the Sussex Centre, PHH Centre, Mississauga Executive Centre, the Village Offices of Sherwoodtowne, the Treetops Office Complex, and Re/Max Realty; traffic zone 79 is the Mississauga City Hall, Square One, and the UCO Building. Also, at the intersection of Hurontario Street and Dundas Street East/West (traffic zones 57 and 67), there are medical office buildings such as the Confederation Place and Hurontario Professional Building.

North of the St. Lawrence and Hudson Railway in Mavis-Erindale (traffic zone 71) is another dense area within the city. Mississauga Transit, Canadian Pacific Railway and Rockett Lumber Building Supplies make up the three largest businesses in this area.

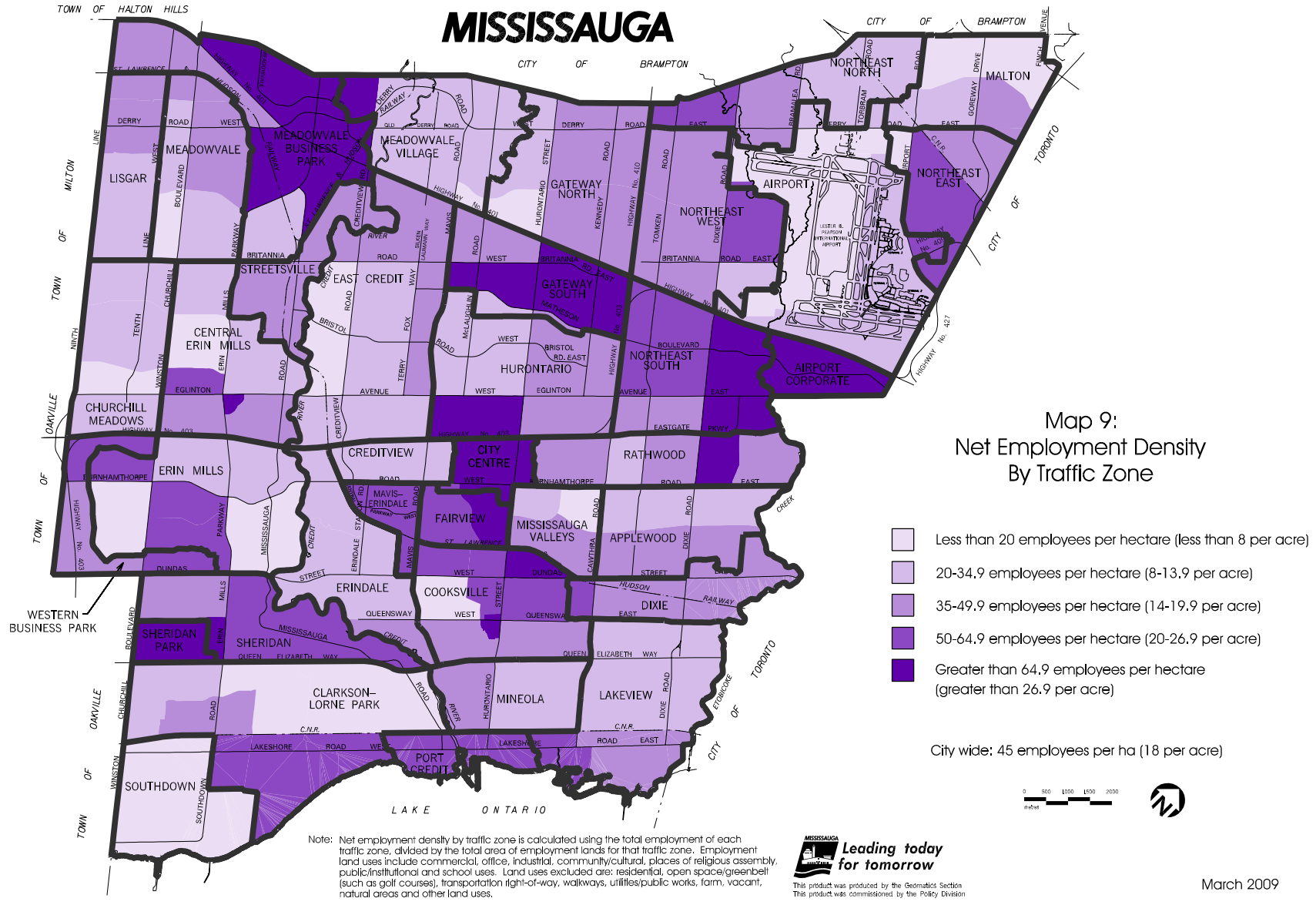
Airport Corporate (traffic zones 5 and 102), an Employment District with corporate head offices and warehousing and distribution uses, has a large number of employees per hectare. Some of the businesses in this district include Hewlett-Packard, Citigroup, Accenture, Loyalty Management Group, Bell World, Carlson Marketing Group, Nex Innovations, Federal Express Canada, Emergis and General Mills.

Large finance, retailing and manufacturing companies such as Royal Bank of Canada, GlaxoSmithKline, Wal-Mart, Maple Leaf Consumer Foods, Maxxam Analytics, Microsoft Canada and Tech Data Canada in Meadowvale Business Park are located in traffic zones 18 and 11, and two large professional, scientific and technical companies such as Atomic Energy of Canada Ltd. (AECL) and Hatch are located in traffic zone 33 in Sheridan Park. These traffic zones also have high employment densities.

Other traffic zones of interest are in the northeast section of the City (Gateway and Northeast Employment Districts). Businesses such as Group 4 Flack, Citi, Canada Customs and Revenue Agency, Oracle Corporation, Purolator Courier and Shipping Centre, Intria Items, Commercial Spring and Tool Company, the Pepsi Bottling Group, and office centres such as Britannia Place and Heartland Corporate Centre are found in traffic zones 8 and 93 in Gateway-South.

Traffic zones 9, 98, 99 and 101 in the Northeast-South, traffic zone 104 in Northeast-West as well as traffic zone 110 in the Northeast-East area have a wide range of business sectors such as manufacturing, wholesale trade, retail trade, transportation and warehousing, finance and insurance and professional, scientific and technical services, and public administration. Businesses in these areas include TD Bank Financial Group, Canada Post, Bell Mobility and Bell Canada, Ontario Energy Savings, Pratt & Whitney Canada, Winners Merchants, Symcor, Bantrel, Rollstar Metal Framing, Cara Operations, Panasonic Canada, Sobey's, M D S Pharma Services, Booth Centennial Healthcare Linen Services and Rollstar Metal Framing.

MISSISSAUGA



3.0 TRENDS IN EMPLOYMENT AND BUSINESS GROWTH

This section summarizes employment and business growth trends. It reviews business and employment data from 2004 to 2008 and, where possible, compares these with historic employment and population trends.

3.1 Employment and Business Trends to 2008

Figure 6 illustrates the steady growth in population and employment in the City of Mississauga. Since 1976/77, population and employment has risen tremendously. Population has increased from approximately 250,000 in 1976 to 728,000 in 2008 (191%); employment has risen from 132,000 in 1977 to 427,165 in 2008 (224%)⁷.

As indicated in Section 2.1, the employment estimate for 2008 is 427,165. This figure reflects adjustments made to the Mississauga Employment Survey data to bring them in line with the Census definition of employment. The results are comparable to the 2008 Growth Forecast employment projection for June 2008 (450,100 employees). This represents a 5% difference from the projected employment figure. This difference, in part, reflects the different data sources and different methodologies. While the growth forecasts consider employment survey data, they are based on Census data for consistency across municipal boundaries. A key distinction between the Census and the City's employment survey is that the former is counted from place of residence whereas employment survey data is collected from place of employment.

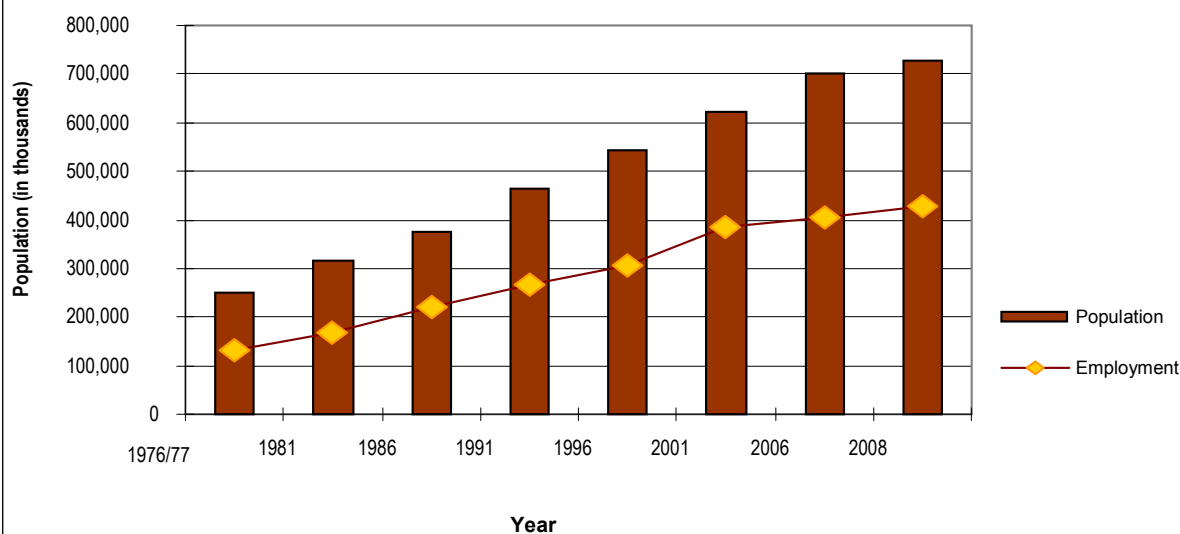
In comparing Employment Survey results (with no adjustment for census definition of employment) from 2007 and 2008, the 2008 Employment Survey found approximately 10 less business sites (operating businesses and vacancies) than in 2007. Operating businesses increased from 21,340 in 2007 to 21,380 in 2008, an increase of 40 businesses, while vacancies decreased by 2% over the same time period.

From 2007 to 2008 a 2.8% increase in employment was observed. This increase can be attributed in part to new buildings and expansions of existing businesses, such as Citi financial services, Bell Mobility, Canada Cartage, T.S.T Overland Express, Aditya Birla Minacs, GlaxoSmithKline in Meadowvale Business Park. As well, Hewlett-Packard in Airport Corporate showed an increase of over 500 employees from 2007 to 2008.

Other companies that have contributed to an increase in total employment for the City of Mississauga in 2008 include TD Bank Financial Group in Northeast and Gateway, SHOW Broadcast Services in Sheridan Park, and Airport Information Services at Lester B. Pearson International Airport. These companies all increased by approximately 300 employees from the previous year. Mid-sized and smaller firms also contributed to the total increase in employment.

⁷ Population and employment numbers referenced in this section have been rounded.

Figure 6: Employment and Population Trends, 1976/77 to 2008



Sources: Census of Canada, City of Mississauga Employment Survey, 2008 Growth Forecast

Note: Employment information is from the City of Mississauga Employment Survey except for 1991 which is from the Census of Canada Journey to Work data and 2008 which is the 2008 Employment Survey figure brought in line with the Census definition of employment. The population information is from the Census of Canada, with the exception of 2008 which is the City of Mississauga 2008 Growth Forecast projection of population for June 2008.

From 2007 to 2008, total vacancies decreased by 2% or 50 vacancies with the proportion of vacancies to business sites 10%, the same as the previous year. The number of vacancies in developments with five to nine units as well as greater than nine units vacant increased. This occurred mainly in office buildings and multi-unit industrial developments. Vacancies in developments with less than 5 units increased by 5% from 2007 to 2008.

The total number of vacant buildings decreased from 2007 to 2008 by 14% or by 30 buildings, for a total of approximately 180 buildings vacant. As expected, the majority of the vacant buildings are found in the Northeast area, the largest employment planning district in terms of area, number of businesses and employment. Some of this decrease is due to new industrial developments established in 2007 in Gateway and Northeast which became fully tenanted in 2008, as well as the expected business turnover within employment areas.

3.2 Businesses by Planning District

As a whole, the number of operating businesses in the City increased 3.7% from 2004 to 2008. Table 6 summarizes the number of businesses by Planning District by year from 2004 to 2008.

The number of businesses from 2007 to 2008 decreased in some Planning Districts, with 5% decreases in City Centre, Sheridan and Sheridan Park. For example in Sheridan, the 5% decrease is the result of vacancy increases, representing 10% of total business sites within that district. In Sheridan Park there was a 5% decrease in the number of businesses however, in absolute numbers this is a change of only three businesses. In City Centre and Malton, several businesses expanded to occupy adjacent unit(s) that were once utilized by other businesses, hence the 5% decrease in the total number of businesses. In the Malton area, the number of vacancies from 2007 to 2008 almost doubled which also partially explains the reduction in operating businesses.

During the same time period, vacancies in the Dixie Planning District decreased in 2008 compared to the previous year by more than 8%, occurring mostly within office buildings, retail centres and multi-unit industrial developments. This change partially explains the 2% increase in total businesses for that district.

In some Planning Districts the number of businesses increased from 2007 to 2008, with a large percentage increase in the number of businesses but a small change in the absolute number. For instance, in Lisgar information for six additional businesses was collected in 2008, resulting in a 8% change from 2007 to 2008, and in East Credit sixteen additional businesses resulted in a 6% change.

Table 6: Businesses by Planning District, 2004-2008

Planning District	2004		2005		2006		2007		2008		% Change			
	# of Business	% of Total	# of Business	% of Total	# of Business	% of Total	# of Business	% of Total	# of Business	% of Total	2004-2005	2005-2006	2006-2007	2007-2008
Northeast	6,515	32%	6,585	31%	6,420	31%	6,540	31%	6,540	31%	1%	-3%	2%	0%
Gateway	1,610	8%	1,635	8%	1,620	8%	1,680	8%	1,740	8%	1%	-1%	3%	4%
Dixie	1,430	7%	1,480	7%	1,420	7%	1,485	7%	1,515	7%	4%	-4%	4%	2%
Meadowvale Business Park	1,145	6%	1,220	6%	1,220	6%	1,275	6%	1,260	6%	6%	0.1%	4%	-1%
Cooksville	1,100	5%	1,100	5%	1,075	5%	1,085	5%	1,075	5%	0.2%	-3%	1%	-1%
Western Business Park	915	4%	955	5%	970	5%	990	5%	1,005	5%	4%	2%	2%	2%
City Centre	1,025	5%	1,025	5%	1,035	5%	1,050	5%	1,000	5%	0.1%	1%	1%	-5%
Airport Corporate	525	3%	540	3%	550	3%	570	3%	590	3%	4%	1%	4%	3%
Lakeview	525	3%	530	3%	535	3%	525	2%	510	2%	1%	0.2%	-2%	-2%
Port Credit	465	2%	500	2%	490	2%	500	2%	500	2%	8%	-2%	2%	0%
Mavis-Erindale	470	2%	485	2%	495	2%	490	2%	490	2%	3%	2%	0%	0%
Central Erin Mills	455	2%	470	2%	475	2%	480	2%	475	2%	3%	1%	1%	-1%
Streetsville	445	2%	445	2%	445	2%	440	2%	435	2%	0.4%	0.4%	-1%	-2%
Clarkson-Lorne Park	410	2%	415	2%	410	2%	410	2%	415	2%	1%	-2%	0%	0.5%
Applewood	400	2%	400	2%	370	2%	395	2%	400	2%	1%	-8%	6%	1%
Hurontario	360	2%	365	2%	365	2%	395	2%	395	2%	1%	0.3%	7%	0%
Lester B. Pearson	360	2%	345	2%	350	2%	320	2%	340	2%	-4%	2%	-9%	5%
Malton	340	2%	355	2%	355	2%	350	2%	340	2%	3%	0.3%	-1%	-4%
East Credit	210	1%	235	1%	240	1%	290	1%	310	1%	11%	2%	17%	6%
Southdown	255	1%	275	1%	260	1%	270	1%	270	1%	8%	-7%	3%	0.4%
Sheridan	265	1%	265	1%	260	1%	280	1%	265	1%	1%	-3%	6%	-5%
Rathwood	245	1%	240	1%	240	1%	245	1%	245	1%	-2%	0.4%	1%	0%
Meadowvale	220	1%	225	1%	230	1%	230	1%	225	1%	3%	1%	2%	-3%
Erin Mills	205	1%	220	1%	220	1%	220	1%	215	1%	8%	1%	-1%	-2%
Erindale	160	1%	165	1%	160	1%	170	1%	170	1%	3%	-2%	6%	-2%
Fairview	125	1%	135	1%	130	1%	130	1%	130	1%	8%	-4%	-1%	2%
Mineola	110	1%	105	1%	105	0.5%	100	0.5%	100	0.5%	-2%	-3%	-6%	1%
Churchill Meadows	35	0.2%	50	0.2%	65	0.3%	80	0.4%	85	0.4%	28%	25%	17%	2%
Lisgar	50	0.2%	55	0.3%	65	0.3%	70	0.3%	80	0.4%	7%	15%	10%	8%
Mississauga Valleys	70	0.3%	75	0.4%	75	0.4%	80	0.4%	80	0.4%	5%	1%	5%	-1%
Creditview	70	0.3%	70	0.3%	70	0.3%	70	0.3%	75	0.3%	1%	-1%	3%	1%
Meadowvale Village	50	0.2%	60	0.3%	60	0.3%	60	0.3%	60	0.3%	17%	2%	3%	0%
Sheridan Park	55	0.3%	60	0.3%	60	0.3%	60	0.3%	55	0.3%	7%	3%	-5%	-5%
Total	20,620	100%	21,105	100%	20,840	100%	21,340	100%	21,380	100%	2%	-1%	2%	0.2%

Numbers may not add due to rounding. Percentages are calculated based on unrounded figures.

4.0 KEY FINDINGS

This report presents a profile of employment and businesses in the City in 2008 and reviews employment and business growth trends. The principal findings of the report are as follows:

- Employment based on the 2008 Employment Survey was 401,285. When this figure is brought in line with the Census definition of employment to consider persons with multiple jobs and home-based businesses, the estimate of total employment is 427,165;
- The total employment estimate of 427,165 employees is a 5% difference from the City of Mississauga 2008 Growth Forecast projection of employment for June 2008 of 450,100 employees;
- Mississauga has an employment ratio of .59, that is, for every 100 residents of the City, there were 59 local jobs;
- There are approximately 26,115 fewer members of the Mississauga resident labour force than there are employment positions in the City of Mississauga. When unemployment is considered, it is estimated that Mississauga had a net imported labour force of 55,000 positions in 2008. This meets one of the population and employment objectives in Mississauga Plan, *"to continue to be a net importer of labour"*;
- Full-time employment was 90% of total employment and part-time employment was 10% of total employment in the City in 2008;
- A review of the total employment by Planning District finds that the four main concentrations are Meadowvale Business Park, Northeast-South, Northeast-West and Gateway-South, which represents almost 40% of the total employment opportunities in the City in 2008;
- In 2008, the largest concentration of businesses was found in Northeast-West, Northeast-South, Northeast-North and Dixie;
- In terms of vacancies, the largest proportion of total city vacancies are found in districts that have the largest concentration of businesses such as Northeast-West, Northeast-South, Northeast-North and Dixie;
- The City's employment profile continues to be dominated by small businesses. In 2008, 72% of the City's businesses were establishments of less than 20 employees while 43% had fewer than five employees;
- The largest portion of the employment base in Mississauga was in mid-sized firms between 20 and 300 employees. These firms represent 15% of the total number of businesses but constitute 47% of the work force;

- Most Planning Districts had a representation of businesses with less than 300 employees, which provides for a range of employment opportunities. Mississauga's Strategic Plan objective to maintain a variety of employment opportunities is addressed in this distribution of businesses;
- Most Planning Districts had businesses in all size ranges and from all employment sectors. This reflects the diversity of employment and business activity in the City. It addresses the Strategic Plan and Mississauga Plan initiatives for a dynamic and diverse economic base with a range of employment opportunities;
- The largest concentration of businesses in Mississauga was in the retail trade sector. A total of 13% of businesses and 6% of employment positions are in retailing establishments. The second and third largest sectors are wholesaling and manufacturing, respectively. Thirteen percent of businesses in the City are wholesale, accounting for 14% of all employees and 13% of business activities are in manufacturing, consisting of 20% of total employment. Transportation and warehousing has been highlighted in the report. While this sector is ranked eighth in terms of the number of businesses (5%), it has the third largest number of employees in Mississauga, making up 12% of the total employment. Professional, scientific and technical services are a growing sector in the City of Mississauga, consisting of 7% of total employment as well as 7% of total businesses.
- The four business sectors wholesale trade, manufacturing, professional, scientific and technical services and transportation and warehousing make up approximately 38% of businesses and 53% of employment positions in the City. Although these four industries comprise a substantial portion of total employment and businesses in the City, there is representation from all nineteen business sectors. The presence of firms in these sectors reflects the diversity of employment and business activity in the City and addresses the Strategic Plan initiative that Mississauga maintains a dynamic and diverse economic base;
- Employment density refers to the number of employees per geographic area, using the total employment of each traffic zone and the area of that traffic zone. The City's average gross employment density is 14 employees per hectare (5 employees per acre) and the average net employment density is 45 employees per hectare (18 per acre). The greatest concentrations of employment density are found in areas containing multiple storey buildings such as hospitals (the Credit Valley Hospital and the Trillium Health Centre), office buildings, and large retailing, wholesaling, manufacturing, and transportation and warehousing companies;
- From 2007 to 2008, total vacancies decreased by 2% or 50 vacancies with the proportion of vacancies at 10% of total businesses, the same as in 2007;
- There has been an increase in the number of businesses in the City from 2004 to 2008 by approximately 3.7%. However, some individual Planning Districts have experienced significant increase and decreases in the business count; and
- From 2007 to 2008, a 2.8% increase in employment was observed. This increase is attributed to new buildings and expansions to existing businesses.

MISSISSAUGA

Appendix A:
Planning Districts

- RESIDENTIAL
- EMPLOYMENT
- CITY CENTRE
- AIRPORT

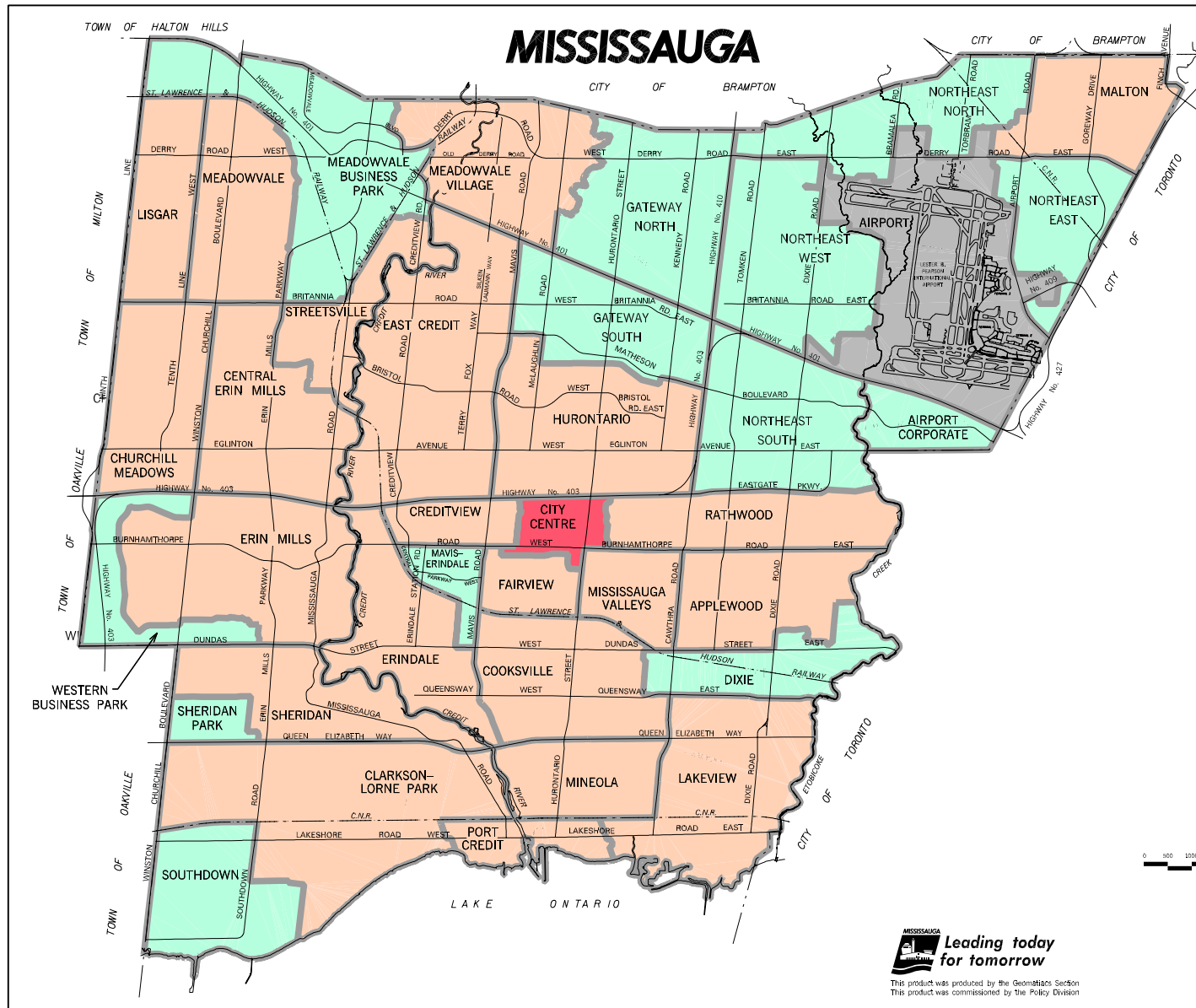
0 500 1000 1500 2000



**Leading today
for tomorrow**

This product was produced by the Geomatics Section
This product was commissioned by the Policy Division

March 2009



Appendix B: Employment Adjustment Factors

Residential Adjustment Factor

The residential adjustment factor of 6.952 was applied to businesses in Residential Districts with no employment data. This adjustment factor is the average number of employees for all businesses in Residential Districts, with less than 100 employees.

Employment Adjustment Factors

The following adjustment factors were applied to businesses with no employment data in each Employment District:

Planning District	Adjustment Factor
Airport Corporate	14.500
City Centre	9.901
Dixie	6.842
Gateway	13.978
Lester B. Pearson	7.946
Mavis-Erindale	9.366
Meadowvale Business Park	12.706
Northeast	9.731
Sheridan Park	21.063
Southdown	9.265
Western Business Park	8.767

The employment adjustment factor is the average number of employees for all businesses in each Planning District with less than 100 employees.

Appendix C: Businesses with 300+ Employees

Business Name	Street Address	Planning District
<i>Businesses with 1000+ employees</i>		
Accenture Inc.	5450 Explorer Dr	Airport Corporate
Air Canada	1 PIA	Lester B. Pearson
Atomic Energy of Canada Ltd. (AECL)	2251 Speakman Dr	Sheridan Park
Bell Canada	5115 Creekbank Rd	Northeast
Bell Mobility	5099 Creekbank Rd	Northeast
Canada Cartage	1115 Cardiff Blvd	Northeast
Canada Post - Gateway Postal Facility	4567 Dixie Rd	Northeast
Cara Operations	2498 Britannia Rd E	Lester B. Pearson
CFM Majestic Vermont Castings	2695 Meadowvale Blvd	Meadowvale Business Park
Citi	5900 Hurontario St	Gateway
City of Mississauga (City Hall)	300 City Centre Dr	City Centre
Credit Valley Hospital, The	2200 Eglinton Ave W	Central Erin Mills
GlaxoSmithKline Inc.	7333 Mississauga Rd	Meadowvale Business Park
Greater Toronto Airports Authority	3111 Convair Dr	Lester B. Pearson
Group 4 Falck	5770 Hurontario St	Gateway
Hewlett-Packard (Canada) Co.	5150 Spectrum Way	Airport Corporate
Honeywell	3333 Unity Dr	Western Business Park
Mississauga Transit	975 Central Pky W	Mavis-Erindale
R B C Financial Group	6880 Financial Dr	Meadowvale Business Park
Royal Bank of Canada	6880 Financial Dr	Meadowvale Business Park
T S T Overland Express	5200 Maingate Dr	Northeast
TD Bank Financial Group	4880 Tahoe Blvd	Northeast
Trillium Health Centre - Mississauga Site	100 Queensway W	Cooksville
University of Toronto at Mississauga - Erindale Campus	3359 Mississauga Rd	Erin Mills
Wal-Mart Canada Inc.	1940 Argentia Rd	Meadowvale Business Park
<i>Businesses with 500-999 employees:</i>		
Aditya Birla Minacs	6655 Airport Rd	Northeast
AstraZeneca Canada Inc.	1004 Middlegate Rd	Dixie
Bantrel	5925 Airport Rd	Northeast
C P I Plastics Group Ltd.	151 Courtneypark Dr W	Gateway
Canada Revenue Agency	5800 Hurontario St	Gateway
Cara	6299 Airport Rd	Northeast
Carlson Marketing Group	2845 Matheson Blvd E	Airport Corporate
Citigroup	2920 Matheson Blvd E	Airport Corporate
FedEx Canada Ltd.	6895 Bramalea Rd	Lester B. Pearson
General Electric Canada	2300 Meadowvale Blvd	Meadowvale Business Park
Hatch	2800 Speakman Dr	Sheridan Park
Ingram Micro Inc.	55 Standish Crt	Gateway
Intria Items Inc. (Processing Centre)	155 Britannia Rd E	Gateway
Loblaw Companies East	6363 Millcreek Dr	Meadowvale Business Park

Name Business	Street Address	Planning District
Businesses with 500-999 employees:		
Loyalty Management Group	5055 Satellite Dr	Airport Corporate
Maple Leaf Consumer Foods	6985 Financial Dr	Meadowvale Business Park
Matrix Logistics Services Ltd.	6941 Kennedy Rd	Gateway
Maxxam Analytics Inc.	6740 Campobello Rd	Meadowvale Business Park
Microsoft Canada Co.	1950 Meadowvale Blvd	Meadowvale Business Park
Minacs Inc.	6725 Airport Rd	Northeast
Ontario Energy Savings Corp.	6345 Dixie Rd	Northeast
Oracle Corp. Canada	100 Milverton Dr	Gateway
Patheon Inc.	2100 Syntex Crt	Meadowvale Business Park
Personal Insurance Company of Canada/Certas Direct Insurance Company	3 Robert Speck Pky	City Centre
Purolator Courier Ltd.	5995 Avebury Rd	Gateway
Resolve Corporation	2 Robert Speck Pky	City Centre
Royal & SunAlliance Insurance Co.	2225 Erin Mills Pky	Sheridan
S C M Supply Chain Management	6800 Maritz Dr	Gateway
Sobeys Ontario	6355 Viscount Rd	Northeast
Symcor	1 Robert Speck Pky	City Centre
Symcor Inc.	1625 Tech Ave	Northeast
United Technologies Pratt & Whitney Canada Inc.	1801 Courtneypark Dr E	Northeast
Winners Merchant LP	3185 American Dr	Northeast
Winners Merchants Inc.	6715 Airport Rd	Northeast
Businesses with 300-499 employees:		
ADP Canada	6200 Kenway Dr	Gateway
Airport Information Services	1 PIA	Lester B. Pearson
Amhil Enterprises	400 Traders Blvd E	Gateway
Baxter Corporation	4 Robert Speck Pky	City Centre
Bell World	5055 Satellite Dr	Airport Corporate
Booth Centennial Healthcare Linen Services	6580 Northwest Dr	Northeast
Broan-Nutone Canada Inc.	1140 Tristar Dr	Northeast
C C S I Technology Solutions	2480 Meadowvale Blvd	Meadowvale Business Park
C G I Information Systems & Management Consultants	2480 Meadowvale Blvd	Meadowvale Business Park
C M L Healthcare Inc.	6560 Kennedy Rd	Gateway
Cabano Kingsway Transport	1100 Haultain Crt	Northeast
Canadian Pacific Railway	1290 Central Pky W	Mavis-Erindale
Canon Canada Inc.	6390 Dixie Rd	Northeast
Cara Operation Ltd.	6303 Airport Rd	Northeast
Chubb Security Systems	5201 Explorer Dr	Airport Corporate
CIBA Vision Sterile Manufacturing Ltd.	6515 Kitimat Rd	Meadowvale Business Park
Citizenship & Immigration Canada Greater Toronto Enforcement Centre	6900 Airport Rd	Northeast
Coatings 85 Ltd.	7007 Davand Dr	Northeast
Collins & Aikman Plastics Ltd.	590 Abilene Dr	Gateway
Commercial Spring & Tool Co. Ltd.	160 Watline Ave	Gateway
Consolidated Aviation Fuelling of Toronto Ltd.	5600 Silver Dart Dr	Lester B. Pearson
Corporate Express Canada Inc.	550 Pendant Dr	Gateway

Business Name	Street Address	Planning District
Businesses with 300-499 employees:		
Coseco Insurance Inc.	5600 Cancross Crt	Gateway
Daimler Chrysler	350 Hazelhurst Rd	Southdown
Delta Meadowvale Resort & Conference Centre	6750 Mississauga Rd	Meadowvale Business Park
Drakkar Human Resources Inc.	1137 Derry Rd E	Northeast
Dufferin Peel Catholic District School Board (Catholic Education Centre)	40 Matheson Blvd W	Gateway
E.I. Du Pont Canada Company	7070 Mississauga Rd	Meadowvale Business Park
Emergis Inc.	5090 Explorer Dr	Airport Corporate
Erinoak Kids	2277 South Millway	Erin Mills
Faurecia Automotive Seating Canada Ltd.	6141 Vipond Dr	Northeast
Federal Express Canada Ltd.	5985 Explorer Dr	Airport Corporate
G N Johnston Equipment Co. Ltd.	5990 Avebury Rd	Gateway
Garland Commercial Ranges Ltd.	1177 Kamato Rd	Northeast
General Mills Corp.	5825 Explorer Dr	Airport Corporate
Government of Canada/ Canada Customs and Revenue Agency	1980 Matheson Blvd E	Northeast
H B Group Insurance Management Ltd.	5600 Cancross Crt	Gateway
Hoffmann-La Roche Ltd.	2455 Meadowpine Blvd	Meadowvale Business Park
Indalex Ltd.	5675 Kennedy Rd	Gateway
Independent Electricity System Operator	2635 Lakeshore Rd W	Southdown
International Automotive Components	3100 Caravelle Dr	Northeast
Johnson Controls Mississauga LP	6450 Cantay Rd	Gateway
Kingsway General Insurance Company	7120 Hurontario St	Gateway
Kuehne + Nagel International Ltd.	5800 Hurontario St	Gateway
LG Electronics	550 Matheson Blvd E	Gateway
Livingston International Inc.	6725 Airport Rd	Northeast
M D S Pharma Services	1980 Matheson Blvd E	Northeast
Maritz Canada Inc.	6900 Maritz Dr	Gateway
Medtronic of Canada Ltd.	6733 Kitimat Rd	Meadowvale Business Park
Metroland Media Group Ltd.	3125 Wolfedale Rd	Mavis-Erindale
Ministry of Finance	77 City Centre Dr	City Centre
Mississauga Seating Systems	400 Courtneypark Dr E	Gateway
MJ Manufacturing	2457 Lakeshore Rd W	Southdown
Morguard Investments Ltd. - Property Management Office	55 City Centre Dr	City Centre
NAV Canada	6055 Midfield Rd	Lester B. Pearson
NexInnovations Inc.	5700 Explorer Dr	Airport Corporate
Orenda Aerospace Corp.	3160 Derry Rd E	Northeast
P C L Constructors Canada Inc.	2085 Hurontario St	Cooksville
Pacific Western Transportation Ltd.	6999 Ordan Dr	Northeast
Panalpina	5800 Avebury Rd	Gateway
Panasonic Canada Inc.	5770 Ambler Dr	Northeast
Peel Children's Aid	6860 Century Ave	Meadowvale Business Park
Peel District School Board	5650 Hurontario St	Gateway
Peel Region Police	180 Derry Rd E	Gateway
Pepsi Bottling Group, The	5900 Falbourne St	Gateway
Petro-Canada Business Centre	2489 North Sheridan Way	Sheridan Park

Business Name	Street Address	Planning District
<i>Businesses with 300-499 employees:</i>		
Petro-Canada Lubricants	385 Southdown Rd	Southdown
Pharma Medica Research Inc.	6100 Belgrave Rd	Gateway
PPG Canada Inc.	880 Avonhead Rd	Southdown
Premier Candle Corp.	960 Britannia Rd E	Northeast
Psion Teklogix Inc.	2100 Meadowvale Blvd	Meadowvale Business Park
Rexel Canada Electrical Inc.	5600 Keaton Cres	Gateway
Rollstar Metal Forming	6655 Northwest Dr	Northeast
Rosedale Group, The	6845 Invader Cres	Northeast
RR Donnelley	6100 Vipond Dr	Northeast
Rubbermaid Canada Inc.	2550 Stanfield Rd	Dixie
Salcros Maintenance Contractors Ltd.	7331 Bramalea Rd	Northeast
Samuel Son & Co., Ltd.	2360 Dixie Rd	Dixie
Shaw Satellite Services/Star Choice	2055 Flavell Blvd	Sheridan Park
Shopping Channel, The	59 Ambassador Dr	Gateway
SHOW Broadcast Services	2055 Flavell Blvd	Sheridan Park
Skyservice Airlines	3 PIA	Lester B. Pearson
SS&C Technologies	5255 Orbitor Dr	Airport Corporate
Stackpole Ltd. - Automotive Gear Division	2430 Royal Windsor Dr	Southdown
Sysco Food Services of Toronto Inc.	7055 Kennedy Rd	Gateway
Tech Data Canada Inc.	6911 Creditview Rd	Meadowvale Business Park
The Brick	6765 Kennedy Rd	Gateway
Trans X Ltd.	7225 Transmark Crt	Northeast
TransGlobe Property Management Services	5310 Explorer Dr	Airport Corporate
Transportation and Works Department	3185 Mavis Rd	Cooksville
Wal-Mart	800 Matheson Blvd W	East Credit
Wal-Mart	100 City Centre Dr	City Centre
Wells Fargo Financial Corporation Canada	55 Standish Crt	Gateway
World Vision Canada	1 World Dr	Gateway

Note: The businesses in this table are those with 300 or more employees as illustrated in Map 2. The table and map do not include businesses with a combined total of 300 or more employees in multiple locations across the City.

Appendix D: NAICS Descriptions

NAICS

The NAICS (North American Industry Classification System) is a classification system used to describe businesses' economic activities. There are nineteen business sectors listed. These sectors are described below.

Accommodation and Food Services (NAICS Code 72)

This sector comprises establishments primarily engaged in providing short-term lodging and complementary services to travellers, vacationers and others. These facilities include hotels, motor hotels, resorts, motels, casino hotels, bed and breakfast accommodation, housekeeping cottages and cabins, recreational vehicle parks and campgrounds, hunting and fishing camps, and various types of recreational and adventure camps. This sector also comprises establishments primarily engaged in preparing meals, snacks and beverages, to customer order, for immediate consumption on and off the premises.

Administrative and Support and Waste Management (NAICS Code 56)

This sector comprises of establishments primarily engaged in activities that support the day-to-day operations of other organizations, and those primarily engaged in waste management activities.

Arts, Entertainment and Recreation (NAICS Code 71)

This sector comprises establishments primarily engaged in operating facilities or providing services to meet the cultural, entertainment and recreational interests of their patrons. These establishments produce, promote or participate in live performances, events or exhibits intended for public viewing and they preserve and exhibit objects and sites of historical, cultural or educational interest. This sector also includes facilities that provide services for patrons to participate in sports, recreational activities or pursue amusement, hobbies and leisure-time interests.

Construction (NAICS Code 23)

This sector comprises establishments primarily engaged in constructing, repairing and renovating buildings and engineering works, and in subdividing and developing land. They may operate on their own account or under contract to other establishments, producing complete projects or just parts of projects. Establishments often subcontract some or all of the work involved in a project; they may produce new construction, or undertake repairs and renovations to existing structures.

Educational Services (NAICS Code 61)

This sector comprises establishments primarily engaged in providing instruction and training in a wide variety of subjects. This instruction and training is provided by specialized establishments, such as schools, colleges, universities and training centres. These establishments may be privately owned and operated, either for profit or not, or they may be publicly owned and operated and may offer food and accommodation services to their students.

Finance and Insurance (NAICS Code 52)

This sector comprises establishments primarily engaged in financial transactions (that is, transactions involving the creation, liquidation, or change in ownership of financial assets) or in facilitating financial transactions.

Health Care and Social Assistance (NAICS Code 62)

This sector comprises establishments primarily engaged in providing health care by diagnosis and treatment, providing residential care for medical and social reasons, and providing social assistance, such as counselling, welfare, child protection, community housing and food services, vocational rehabilitation and child care.

Information and Cultural Industries (NAICS Code 51)

This sector comprises establishments primarily engaged in creating and disseminating (except by wholesale and retail methods) information and cultural products, such as written works, musical works or recorded performances, recorded dramatic performances, software and information databases, or providing the means to disseminate them. This includes establishments that provide access to equipment and expertise to process.

Management of Companies and Enterprises (NAICS Code 55)

This industry comprises establishments primarily engaged in managing companies and enterprises and/or holding the securities or financial assets of companies and enterprises, for the purpose of owning a controlling interest in them and/or influencing their management decisions. They may undertake the function of management, or they may entrust the function of financial management to portfolio managers.

Manufacturing (NAICS Codes 31-33)

The sector comprises establishments engaged in physical or chemical transformation of materials or substances into new products. Products may be finished (ready for use or consumption), or semi-finished (ready for another business to further manufacture). Related activities such as assembly of component parts, blending and finishing of products (by dyeing, heat treating or plating) are also considered manufacturing. Manufacturing firms are also known as plants, factories or mills.

Other Services (NAICS Code 81)

This sector comprises establishments, not classified to any other sector. They are primarily engaged in repairing, or performing general or routine maintenance, on motor vehicles, machinery, equipment and other products to ensure that they work efficiently. These establishments may provide personal care services, funeral services, laundry services and other services to individuals (such as pet care services and photo finishing services). Also included are businesses that organize and promote religious activities, support various causes through grant-making, promote various social and political causes, and promote and defend the interests of their members.

Primary Industry (NAICS Codes 11 and 21)

This sector includes Agriculture, Forestry, Fishing and Hunting, and Mining and Oil and Gas Extraction.

Agriculture, Forestry, Fishing and Hunting:

This sector comprises establishments primarily engaged in growing crops, raising animals, harvesting timber, harvesting fish and other animals from their natural habitats and providing related support activities.

Mining and Oil and Gas Extraction:

This sector comprises establishments primarily engaged in extracting naturally occurring minerals. These can be solids (such as coal and ores), liquids (such as crude petroleum), and gases (such as natural gas). Mining includes quarrying, well operations, milling and other preparation customarily done at the mine site, or as a part of mining activity. Establishments engaged in exploration for minerals, development of mineral properties and mining operations are included in this sector.

Professional, Scientific and Technical Services (NAICS Code 54)

This sector comprises establishments primarily engaged in activities in which human capital is the major input. These establishments make available the knowledge and skills of their employees, often on an assignment basis. The individual industries of this sector are defined on the basis of the particular expertise and training of the service provider.

Public Administration (NAICS Code 91)

This sector comprises establishments primarily engaged in activities of a governmental nature, that is, the enactment and judicial interpretation of laws and their pursuant regulations, and the administration of programs based on them. This includes legislative activities, taxation, national defence, public order and safety, immigration services, foreign affairs and international assistance, and the administration of government programs.

Real Estate and Rental and Leasing (NAICS Code 53)

This sector comprises establishments primarily engaged in renting, leasing or otherwise allowing the use of tangible or intangible assets. Establishments included are those primarily engaged in managing, renting and/or buying of real estate for others and appraising real estate.

Retail Trade (NAICS Codes 44-45)

The retail trade sector comprises establishments engaged in retailing merchandise generally without transformation and rendering services incidental to the sale of merchandise.

Transportation and Warehousing (NAICS Code 48-49)

The transportation and warehousing sector comprises businesses engaged in transporting passengers and goods, warehousing and storing goods, and providing services to these establishments. Transportation can be by road, rail, water, air or pipeline. This sector also includes national post office and courier businesses.

Utilities (NAICS Code 22)

This sector comprises establishments primarily engaged in operating electric, gas and water utilities. These establishments generate, transmit, control and distribute electric power, distribute natural gas, treat and distribute water, operate sewer systems and sewage treatment facilities, and provide related services, generally through a permanent infrastructure of lines, pipes and treatment and processing facilities.

Wholesale Trade (NAICS Code 41)

This sector comprises establishments primarily engaged in wholesaling merchandise and providing related logistics, marketing and support services. The wholesaling process is generally an intermediate step in the distribution of merchandise; many wholesalers are organized to sell merchandise in large quantities to retailers, and business and institutional clients. These may also include suppliers of non-consumer capital goods that sell merchandise in single units to final users.

Source: Statistics Canada, North American Industry Classification System, 2002

TOWN OF HALTON HILLS



Age Group	Number of People
0-14	1800
15-24	1500
25-34	1200
35-44	1000
45-54	800
55-64	600
65-74	400
75-84	200
85+	100



Appendix F: Employment Density Calculations

Traffic Zone	Gross Density		Net Density	
	Employees per Hectare	Employees per Acre	Employees per Hectare	Employees per Acre
1	36.0	14.6	59.2	24.0
2	2.0	0.8	19.0	7.7
3	0.9	0.3	21.5	8.7
4	1.7	0.7	18.0	7.3
5	67.6	27.4	147.3	59.6
6	1.4	0.6	22.0	8.9
7	7.9	3.2	36.0	14.6
8	77.8	31.5	103.5	41.9
9	33.8	13.7	54.4	22.0
10	2.5	1.0	24.2	9.8
11	59.7	24.2	80.5	32.6
12	44.6	18.0	66.1	26.8
13	191.1	77.3	252.9	102.4
14	5.6	2.3	23.7	9.6
15	1.3	0.5	23.8	9.6
16	2.7	1.1	38.7	15.7
17	3.4	1.4	37.2	15.1
18	38.0	15.4	88.6	35.8
19	0.7	0.3	25.4	10.3
20	5.6	2.3	27.2	11.0
21	26.8	10.8	41.4	16.7
22	6.6	2.7	69.6	28.2
23	1.8	0.7	45.7	18.5
24	16.4	6.7	49.6	20.1
25	5.3	2.2	5.7	2.3
26	37.0	15.0	53.1	21.5
27	23.2	9.4	31.5	12.8
28	1.6	0.6	12.3	5.0
29	1.9	0.8	17.2	7.0
30	6.5	2.6	40.6	16.4
31	7.5	3.0	17.7	7.2
32	222.1	89.9	315.6	127.7
33	32.8	13.3	75.7	30.7
34	19.6	7.9	47.1	19.1
35	16.0	6.5	55.1	22.3
36	0.8	0.3	22.3	9.0
37	0.3	0.1	11.9	4.8
38	3.2	1.3	28.3	11.4

Traffic Zone	Gross Density		Net Density	
	Employees per Hectare	Employees per Acre	Employees per Hectare	Employees per Acre
39	8.5	3.4	14.9	6.0
40	2.7	1.1	51.0	20.6
41	3.5	1.4	52.4	21.2
42	11.5	4.6	62.1	25.1
43	7.0	2.8	44.9	18.2
44	3.3	1.4	48.1	19.5
45	1.4	0.6	14.3	5.8
46	0.6	0.2	18.5	7.5
47	0.5	0.2	38.1	15.4
48	2.1	0.8	23.3	9.4
49	3.2	1.3	31.2	12.6
50	3.2	1.3	35.4	14.3
51	3.5	1.4	61.7	25.0
52	0.7	0.3	36.4	14.7
53	5.0	2.0	42.3	17.1
54	1.6	0.6	28.1	11.4
55	2.4	1.0	32.5	13.2
56	0.9	0.4	18.0	7.3
57	13.7	5.5	59.6	24.1
58	3.9	1.6	33.1	13.4
59	15.8	6.4	56.6	22.9
60	35.0	14.2	42.4	17.1
61	19.5	7.9	37.7	15.3
62	19.6	8.0	54.2	22.0
63	1.5	0.6	16.0	6.5
64	3.3	1.3	29.2	11.8
65	19.3	7.8	53.6	21.7
66	20.4	8.2	57.5	23.3
67	13.6	5.5	79.2	32.0
68	2.4	1.0	36.0	14.6
69	5.0	2.0	35.4	14.3
70	17.1	6.9	44.3	17.9
71	26.2	10.6	58.7	23.7
72	22.8	9.2	151.6	61.3
73	1.1	0.4	18.2	7.4
74	3.0	1.2	25.4	10.3
75	5.0	2.0	32.2	13.0
76	1.0	0.4	31.9	12.9
77	1.4	0.6	33.4	13.5
78	1.5	0.6	31.9	12.9
79	68.4	27.7	136.5	55.2
80	2.5	1.0	36.4	14.7

Traffic Zone	Gross Density		Net Density	
	Employees per Hectare	Employees per Acre	Employees per Hectare	Employees per Acre
81	1.8	0.7	40.0	16.2
82	1.4	0.6	37.8	15.3
83	1.9	0.8	38.2	15.4
84	3.2	1.3	38.9	15.7
85	1.0	0.4	31.5	12.8
86	8.3	3.4	119.0	48.2
87	2.5	1.0	36.7	14.9
88	3.1	1.2	24.7	10.0
89	2.2	0.9	22.6	9.1
90	5.9	2.4	44.7	18.1
91	1.5	0.6	27.1	10.9
92	22.6	9.2	32.1	13.0
93	41.9	16.9	65.3	26.4
94	3.2	1.3	38.6	15.6
95	25.6	10.3	40.0	16.2
96	23.1	9.3	41.7	16.9
97	5.5	2.2	13.0	5.3
98	18.3	7.4	49.0	19.8
99	54.5	22.0	106.7	43.2
100	43.3	17.5	58.9	23.8
101	52.4	21.2	86.2	34.9
102	99.2	40.1	182.0	73.7
103	33.2	13.4	47.0	19.0
104	37.5	15.2	51.7	20.9
105	30.4	12.3	45.0	18.2
106	32.4	13.1	49.6	20.1
107	19.1	7.7	25.3	10.3
108	0.4	0.2	1.1	0.5
109	25.7	10.4	27.0	10.9
110	46.6	18.8	62.4	25.3
111	18.6	7.5	36.8	14.9
112	2.7	1.1	32.8	13.3
113	21.6	8.7	34.7	14.0
114	2.0	0.8	32.6	13.2
115	6.7	2.7	41.5	16.8
116	1.5	0.6	30.8	12.5
117	8.7	3.5	29.8	12.1
118	2.8	1.1	35.3	14.3
119	5.3	2.2	37.3	15.1
120	16.6	6.7	40.2	16.3
121	33.3	13.5	69.3	28.0
122	1.4	0.6	23.9	9.7

Traffic Zone	Gross Density		Net Density	
	Employees per Hectare	Employees per Acre	Employees per Hectare	Employees per Acre
209	2.8	1.1	29.6	12.0
210	0.8	0.3	20.8	8.4
211	1.1	0.5	15.7	6.4
212	0.8	0.3	17.8	7.2
213	12.7	5.1	62.5	25.3
214	1.0	0.4	21.4	8.7
215	161.4	65.3	548.6	222.0
216	1.9	0.8	2.0	0.8
City Wide	14	5	45	18