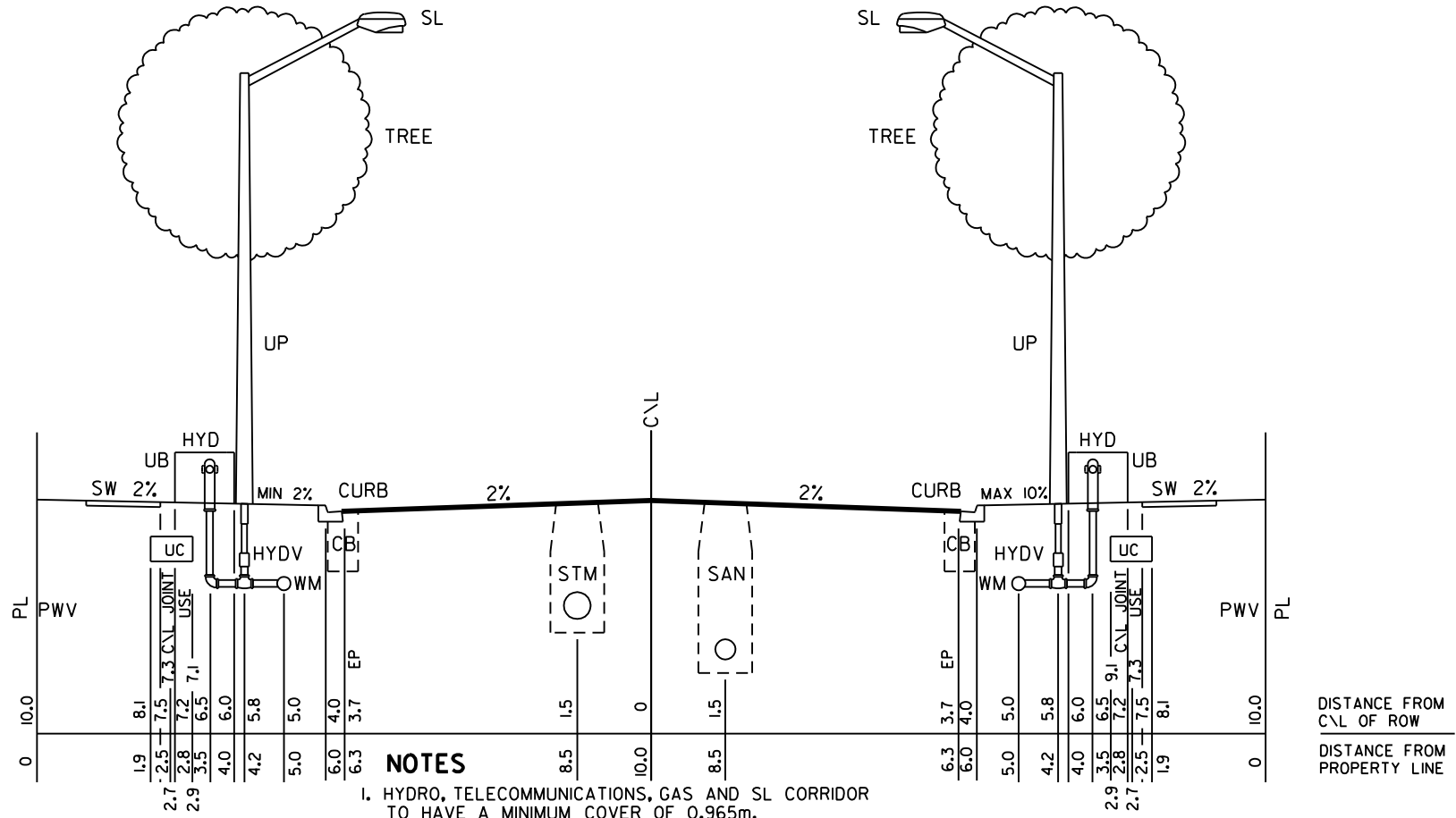


METRIC
ALL DIMENSIONS IN METRES




NOTES

1. HYDRO, TELECOMMUNICATIONS, GAS AND SL CORRIDOR TO HAVE A MINIMUM COVER OF 0.965m.
2. WATERMAIN TO HAVE A MINIMUM COVER OF 1.7m.
3. IF UTILITIES CANNOT BE INSTALLED ACCORDING TO THIS STANDARD THEY ARE TO BE INSTALLED AS CLOSE AS POSSIBLE TO THE PRESCRIBED LOCATION SUBJECT TO THE APPROVAL OF THE TRANSPORTATION AND WORKS DEPARTMENT OF THE CITY OF MISSISSAUGA.
4. A 0.4m - 0.6m CLEARANCE MUST BE MAINTAINED BETWEEN CABLES AND HYDRANTS.
5. A 0.3m CLEARANCE MUST BE MAINTAINED BETWEEN WATERMANS AND UTILITY POLES.
6. ROAD WIDTH IS MEASURED FROM FACE OF CURB TO FACE OF CURB AS DEFINED ON OPSD STD. 600.040 CURB & GUTTER. PAVEMENT WIDTH IS MEASURED FROM EDGE OF PAVEMENT (EP) TO EDGE OF PAVEMENT (EP).
7. FOR LOCATION OF GAS MAIN WITHIN UTILITY CORRIDOR REFER TO STD. 221I.280

LEGEND

- EP - EDGE OF PAVEMENT
- CB - CATCH BASIN
- CURB - CURB OR CURB AND GUTTER
- C/L - CENTRELINE
- GAS - GAS MAIN
- HYD - FIRE HYDRANT
- HYDV - FIRE HYDRANT VALVE
- PWV - PRIVATE WATER VALVE
- PL - PROPERTY LINE
- SL - STREETLIGHT
- SW - SIDEWALK
- SAN - SANITARY SEWER
- STM - STORM SEWER
- UB - UTILITY BOX (HYDRO, TELECOMMUNICATIONS)
- UC - UTILITY CORRIDOR (HYDRO, TELECOMM, GAS, SL)
- UP - UTILITY POLE
- WM - WATERMAIN



STANDARD
LOCAL RESIDENTIAL ROAD
8.0m ROAD ON 20m ROW

EFF. DATE	2002-01-01	SCALE	N.T.S.
REV.	6	STANDARD No. 221I.070	

DISTANCE FROM
C/L OF ROW
DISTANCE FROM
PROPERTY LINE