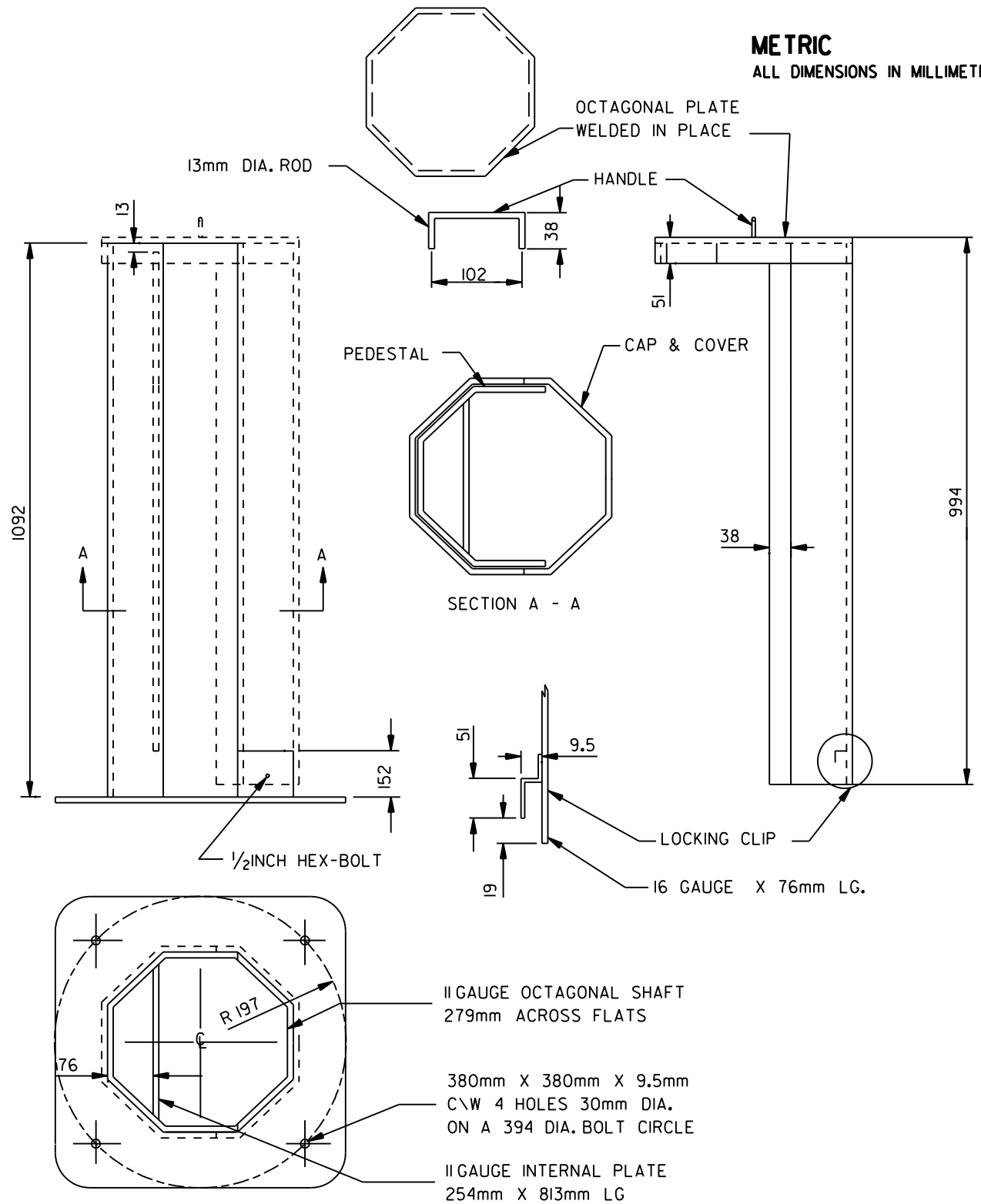



**METRIC**  
ALL DIMENSIONS IN MILLIMETRES



**NOTES**

- 1.) THIS PEDESTAL WILL INCLUDE SECURELY HOUSED, SUITABLY SIZED CIRCUIT BREAKERS, 1- 60 AMP DOUBLE POLE BREAKER, 1- 40 AMP BREAKER, 1- 50 AMP BREAKER, AS PER 2060.07
- 2.) ALL MATERIAL GALVANIZED FINISH
- 3.) CONCRETE BASE TO BE 1200mm DEEP
- 4.) ALL P.V.C. CONDUIT TO BE MIN. 600mm DEEP



**MISSISSAUGA**  
Leading today for tomorrow

---

**STANDARD**

---

**POWER SERVICE PEDESTAL**  
**(POWCO 8500 SERIES OR EQUAL)**

---

EFF. DATE	83-06	SCALE	N.T.S.
REV.	1	28/02/03	STANDARD No. 2600.010