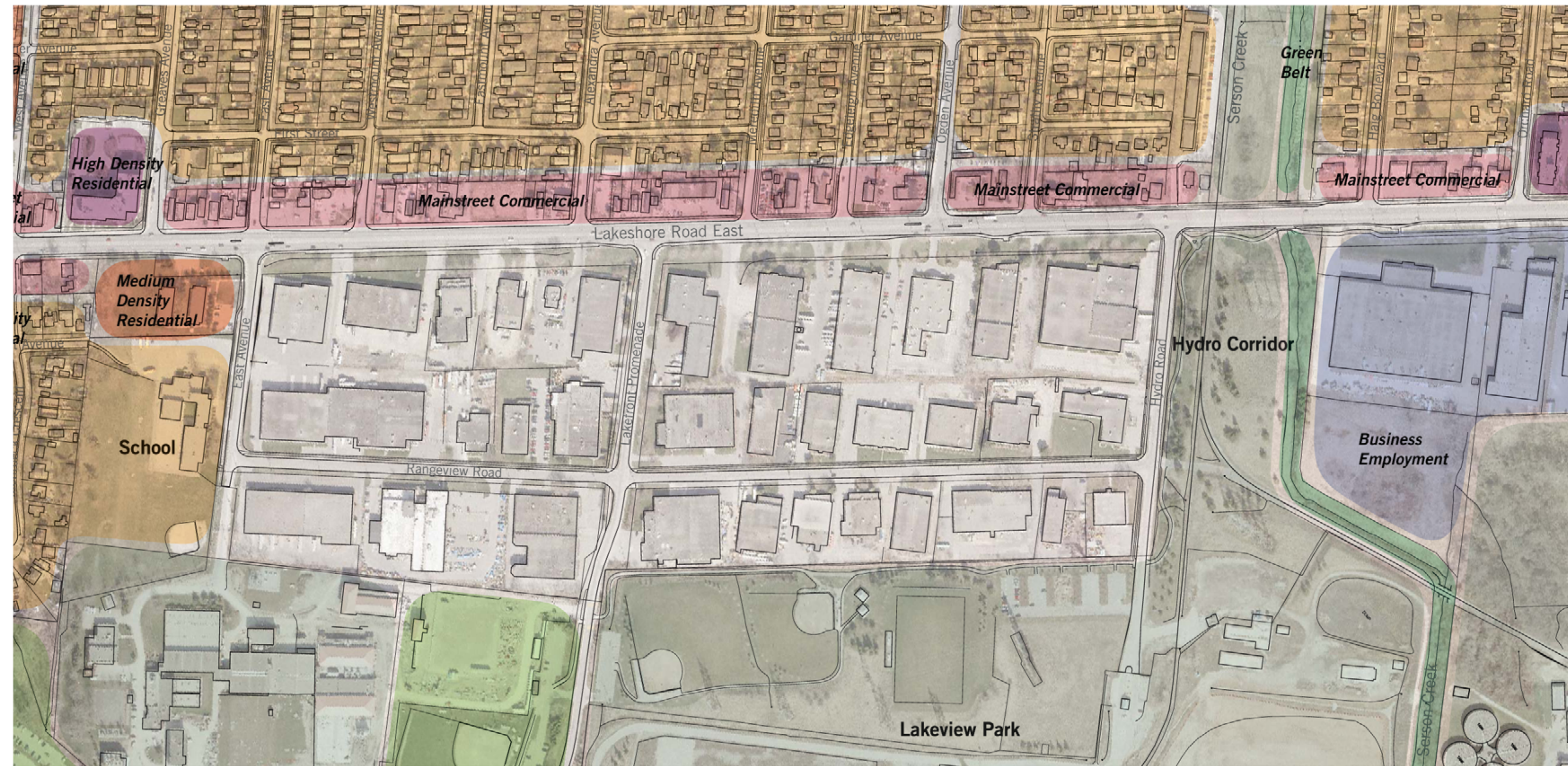


Scenario One:
Assume employment lands will remain.

What would you like the Industrial Area to look like?

Scenario Two:
Assume entire site could be redeveloped.

What would you like the new community to look like?



1. Currently this area is typically industrial. However, it is zoned for all types of employment uses. Over time there may be opportunities for sites to redevelop. What sort of employment should happen here? Where should it be located? What should it look like, e.g. building materials, heights, location, etc?

2. The Lakeview Industrial Area is an important employment area for the district, however; its relationship to the surrounding community could be improved. How do you think that the following areas can be improved?

South side of Lakeshore Blvd Wide boulevard, open space or built form?	Lakefront Promenade as an entrance to the waterfront	Internal Roads Rangeview, Hydro and East Avenue
Building Designs and Siting	Pedestrian and Cycling Connections	Parking and Loading Areas

1. Given that there is a potential for the long term land-uses for this area to change, what are your preferred land uses for the area? e.g. residential, commercial, open spaces or a mix of all three?

2. How should your preferred land uses be arranged? Where should key elements be located? (Example key elements: streets and open spaces, pedestrian and cycling connections, crosswalks, landscaping etc.)

3. What should new buildings look like? (Consider heights, materials, setbacks, styles, amenity spaces)

Use your precedent sheets to help identify ideas that you do and don't like.