

***Public Consultation Summary:
Lakeview Youth Engagement Workshop April 8, 2008.***

1.0 Introduction:

On Tuesday April 8, 2008, staff from the City of Mississauga, in conjunction with consultants Brook McIlroy Inc./Pace Architects, visited Alan A. Martin Senior Public School to conduct a workshop for the Lakeview District.

1.1 Who participated in the workshop?

Twenty-two grade 8 students from Mr. Bell's class took part in the workshop.

1.2 What was presented?

The workshop began with a presentation by Brook McIlroy Inc./Pace Architects. The presentation included the following:

- Study Team Purpose
- Community Characteristics
 - Context
 - Primary Physical Elements
 - Green Spaces and Natural Areas
- Quality of Great Waterfront Community
 - Sustainable: Environmentally Responsible
 - Connected to the Water
 - Balanced Use of Natural Areas
 - Streets for People
 - Heritage
 - Year Round Use
 - Options for Travelling
 - Built Form
 - Active Building Uses
 - Activities For All Ages



***Please Note: The Workshop materials are available on-line at:
www.mississauga.ca/lakeviewportcreditreview***



2.0 Workshop

The purpose of the Youth Engagement Workshop was to understand how youth utilize their community and determine preferences for shaping the future of the Lakeview community. Each table initiated discussion by describing the top three things they love about their community, with further topics of discussion outlined on a worksheet. The following is an outline of the workshop's objectives:

- Tell Us About Your Community
 - What is important to you in your community and what makes it special?
 - What do you like/dislike about your community?
 - What is missing in your community?

Groups were asked to make notes of their ideas on the worksheets provided and utilize a series of precedent photographs to illustrate their preferred urban design elements under the headings:

- Favourite public spaces and parks
- Favourite buildings
- Things we don't like

At the end of the workshop, each group presented their recommendations and discussion items.

2.1 Discussion Items Summary: Please also refer to section 2.2 Worksheets

Group 1 Comments

Tell Us About Your Community

- A) What is important to you in your community and what makes it special?
- Variety of stores and places to shop.
 - Safety.
 - Cawthra Community Centre.
- B) What do you like/dislike about your community?
- Like:
 - Adamson Estate.
 - You can ride your bike to many places.
 - Schools are close together.
 - Golf course nearby.
 - Dislike:
 - Lack of winter maintenance.
 - Safety for people walking or biking - not enough crossings over the rail line. Not enough Police patrolling the parks.
 - Sidewalks are not continuous.
- C) What is missing in your community?
- Community Center close to the lake.
 - Movie theatre.

***Please Note: The Workshop materials are available on-line at:
www.mississauga.ca/lakeviewportcreditreview***

- Cycle events and bike trails.
- Museum.
- Facility like the Playdium.
- Arcade.
- Good bus/GO service.
- Basketball courts and soccer fields
- “Youth Lounge” – a place for kids under 18 years old to go that is supervised, provides after school and weekend activities and is connected to trail / bike system and bus route.
- Tennis courts.
- Skate Park and BMX.
- Places to eat such as the Mandarin, Harveys, Popeyes
- Clean beaches

Group 1 Selected Images



Students liked the image showing a dedicated bike lane and thought this would be appropriate for Lakeshore Road.

An outdoor skating rink could be made at the Waste Water Treatment Plant.

Lakeview Park could become more attractive now that the power station is gone.



Students liked the idea of green roofs on buildings and separated bike lanes.

Images showing streetscapes with lots of people, seating and trees were selected many times by the students.

Please Note: The Workshop materials are available on-line at:
www.mississauga.ca/lakeviewportcreditreview



Places We Like to Visit:

- Pizza Pizza at Lakeshore and Cawthra Road.
- Mississauga Seniors Centre.
- Cawthra Community Centre.
- Cawthra Woods Park.
- Applewood Village Plaza.
- Dixie Outlet Mall .
- Library.
- Lakeview Park.
- Adamson Estates.
- Stores along Lakeshore Road.
- Lakefront Promenade.
- Arsenal Park.
- Bike Trails in Arsenal Park and Toronto Golf Club.
- Skatepark near Dixie Mall.

Group 2 Comments

Tell Us About Your Community

- A) What is important to you in your community and what makes it special?
- Malls – better than main streets (technology, clothing and jewellery).
 - Places to bike.
 - Places to shop.
 - Parks.
 - Port Credit Arena. (Port Credit District)
 - Square One, Yorkdale.
 - Coffee shops e.g. Tim Horton's.
 - Water Park by AE Crooks Park.
 -
- B) What do you like/dislike about your community?
- Like the new condos, need more.
 - Stores are close by.
 - Need more trees.
 - Transit - Bus is expensive (\$2.75)
- We need better student prices
 - Need places to hang out with friends.
 - Dancing at Polish Community Centre.
 - Need a place for indoor badminton.
 - Waterfront – walkways not ploughed in the winter.
 - Need a Skateboard Park.
 - Lake is a great draw.

***Please Note: The Workshop materials are available on-line at:
www.mississauga.ca/lakeviewportcreditreview***



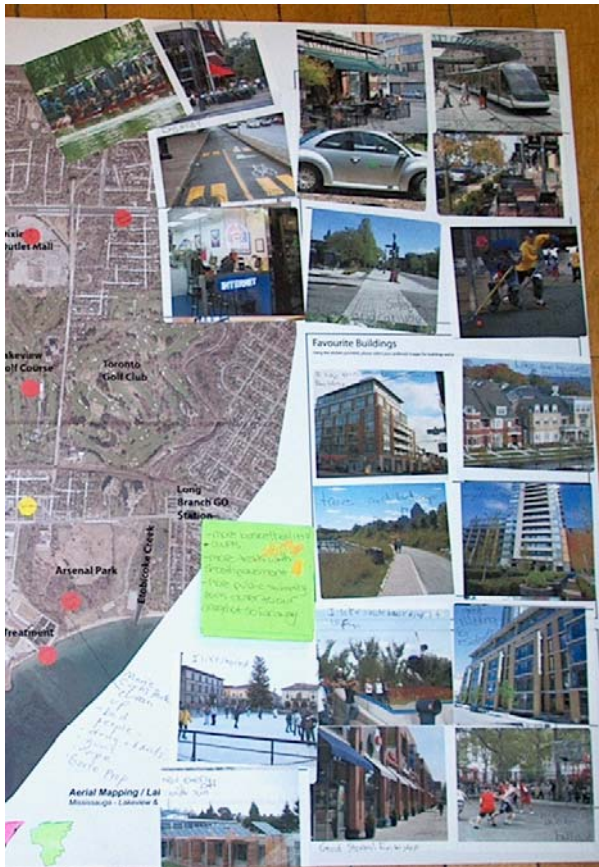
- Plazas – Dixie and Applewood Village.
- There are lots of schools.
- Like the Library.
- It is close by the highway.

C) What is missing in your community?

- Extra-curricular activities.
- More Stores
 - Fairweather
 - EB Games
 - West 49
 - Le Chateau
- Bike trails.
- More affordable and healthy restaurants – (Subway, buffet-style, sushi)
- Chuck-E-Cheese.
- Need more ice cream stores.
- Basketball court.
- Community Center near Lakeshore (Swimming Pool, Hockey).
- Clean lake water.
- Fishing access.
- Lakefront Promenade
 - Jungle gym
 - Old playground was better (new one is too dangerous)
- Marie Curtis Park
 - Needs to be cleaned up.
 - Bad people hang out here (drug addicts, guns, and rapists)
 - Too much goose poop
- Paintball facility.
- Need more indoor/outdoor cafés.
- We would like to see lots of condos in Mississauga instead of Toronto.
- There should be lots of malls.

*Please Note: The Workshop materials are available on-line at:
www.mississauga.ca/lakeviewportcreditreview*

Group 2 Selected Images



Students liked images showing alternate forms of transportation such as higher order transit (HOT) or auto-share programs.

Images selected indicated that students liked a variation in building and housing types.

Students preferred images that showed outdoor sports facilities such as skateboard parks, a skating rink, basketball courts and places to play ball hockey.

Images of well defined crosswalks and bike lanes were selected.

Students liked images that showed busy streetscapes including cafes and seating.

Students liked the idea of renewable energy sources being used.

Place We Like To Visit:

- Cawthra Community Centre.
- AE Crooks Park.
- Lakeview Park.
- Lakefront Promenade.
- Waste Water Treatment Plant.
- Arsenal Park.
- Lakeview Golf Course.
- Library.
- Empty lots to hang out.
- Dixie Outlet Mall.
- Small neighbourhood parks.
- Applewood Village Plaza.

Please Note: The Workshop materials are available on-line at:
www.mississauga.ca/lakeviewportcreditreview

Group 3 Comments

Tell Us About Your Community

- A) What is important to you in your community and what makes it special?
- Waterfront and parks.
 - Lake Ontario.
 - Golf Club.
- B) What do you like/dislike about your community?
- Dislikes:
 - The run-down parts of Lakeshore.
 - Can't swim in lake.
 - Graffiti.
 - Not enough police (don't feel safe).
 - Not enough biking trails (mountain biking).
 - Traffic goes too fast.
- C) What is missing in your community?
- More police (North of QEW and in parks).
 - Graffiti Wall – a place for clean graffiti artists.
 - Winter parks maintenance.
 - Places to shop (e.g. Mall).
 - Bigger sidewalks.
 - Not enough walking bridges (Holburne Rd., Asgard Dr. and Dixie Mall)
 - Need more crosswalks near schools and over railway tracks.
 - More buses with better service.
 - More trees/green in parking lots.
 - More basketball courts.
 - Library that is close by.
 - Community centre that is more accessible.
 - Recreation areas nearby.

Group 3 Selected Images



Students selected images that showed active outdoor spaces that included walkways, ice rinks, water features and patio areas.

port credit

&

lakeview

District Policies Review
Public Engagement Process

City of Mississauga



Students indicated that they did not like buildings that were modern in style.

Students preferred images of buildings that were constructed of warm, natural materials like brick and stone.

Images showing walkways and trails were selected with the added note that the addition of benches would make the images more attractive.

Places We Like to Visit:

- Lakeview Park
- AE Crooks Park
- Applewood Village Plaza

*Please Note: The Workshop materials are available on-line at:
www.mississauga.ca/lakeviewportcreditreview*



port credit & lakeview

District Policies Review Public Engagement Process

City of Mississauga

Group 2

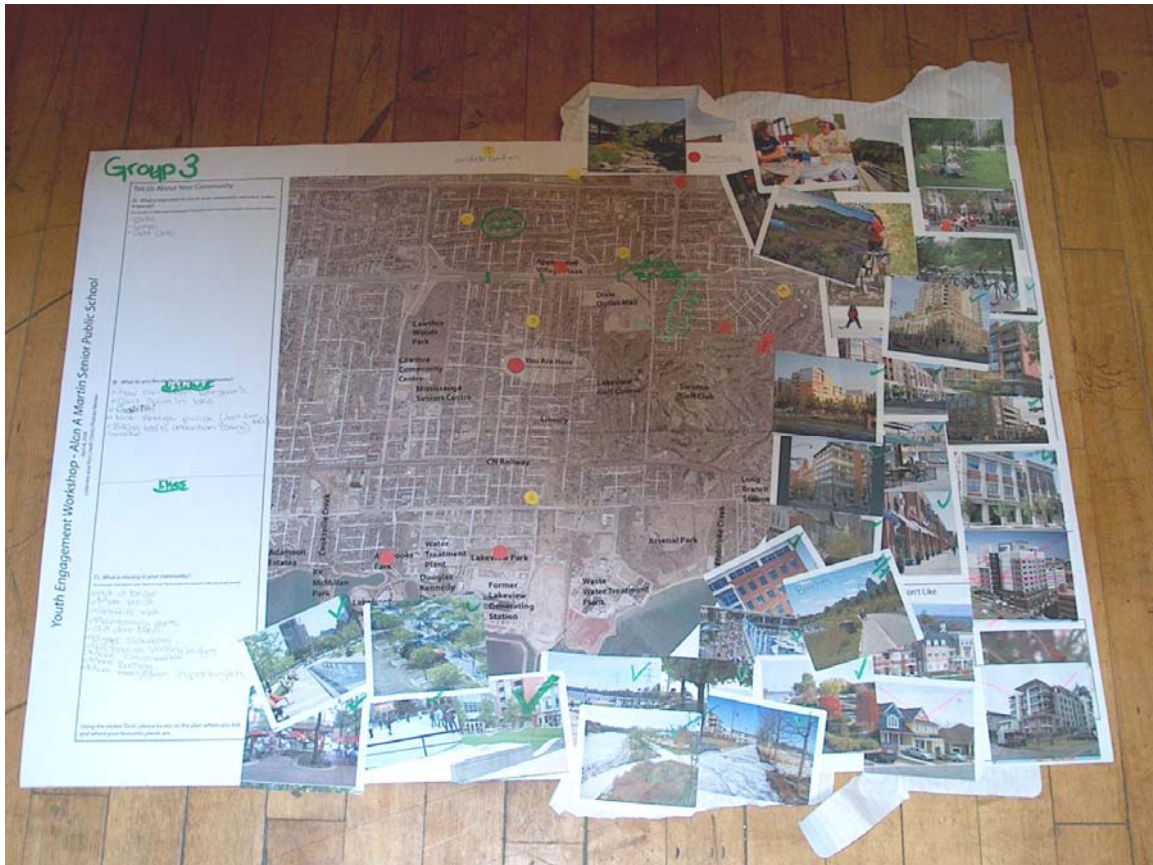


**Please Note: The Workshop materials are available on-line at:
www.mississauga.ca/lakeviewportcreditreview**

port credit & lakeview

District Policies Review
Public Engagement Process
City of Mississauga

Group 3



**Please Note: The Workshop materials are available on-line at:
www.mississauga.ca/lakeviewportcreditreview**