

An aerial photograph of a community, likely Port Credit, showing a river winding through the center. On the right side, there is a large marina with many boats docked. The surrounding area includes residential buildings, parking lots, and some undeveloped land. The text is overlaid on the image.

***A Chance to Shape Your Community
Small Gestures Mean a lot Over Time***

Lakeview and Port Credit District Policies Review
Youth Outreach: Port Credit District
April 8, 2008

Workshop Schedule:

- 10 Minute Presentation
- 5 Minute Post It Note Exercise
- 45 Minutes Workshop
- 15 Minutes Reporting Back



District Policies Review Public Engagement Process



Study Team Introduction

**Brook McIlroy Planning
+ Urban Design/PACE Architects**

Anne McIlroy, Principal

Jana Joyce, Landscape Architect

Stacie Amo, Urban Designer



Study Team Purpose

- Consultants to the City
- Helping the City find out what the community wants
- Helping the City create new rules for development and growth

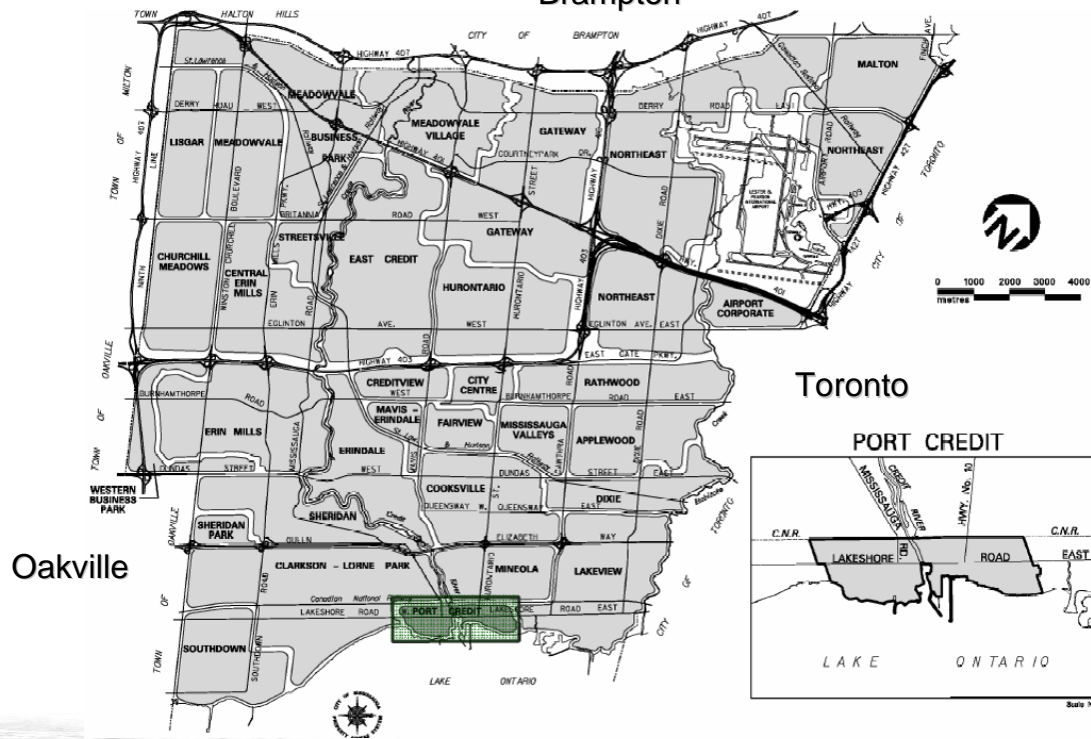


District Policies Review Public Engagement Process

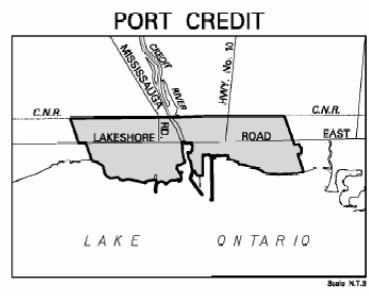


Community Characteristics: Context

Brampton



Toronto

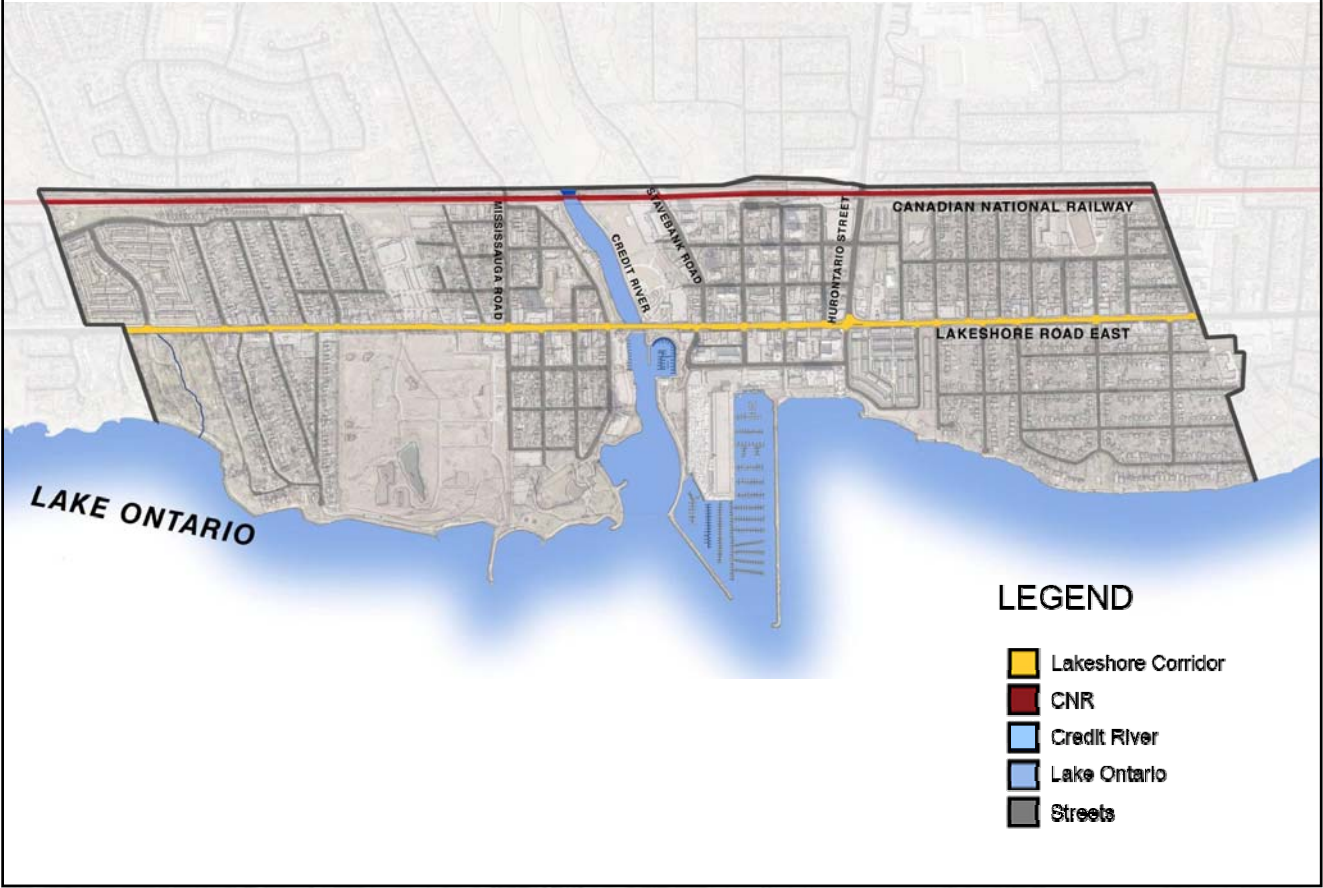


Oakville

District Policies Review Public Engagement Process



Community Characteristics: Primary Physical Elements



Community Characteristics: Green Spaces and Natural Areas



Qualities of Great Waterfront Community



District Policies Review Public Engagement Process



Qualities of Great Waterfront Community

Sustainable: Environmentally Responsible



District Policies Review Public Engagement Process



Qualities of Great Waterfront Community

Connected to the Water

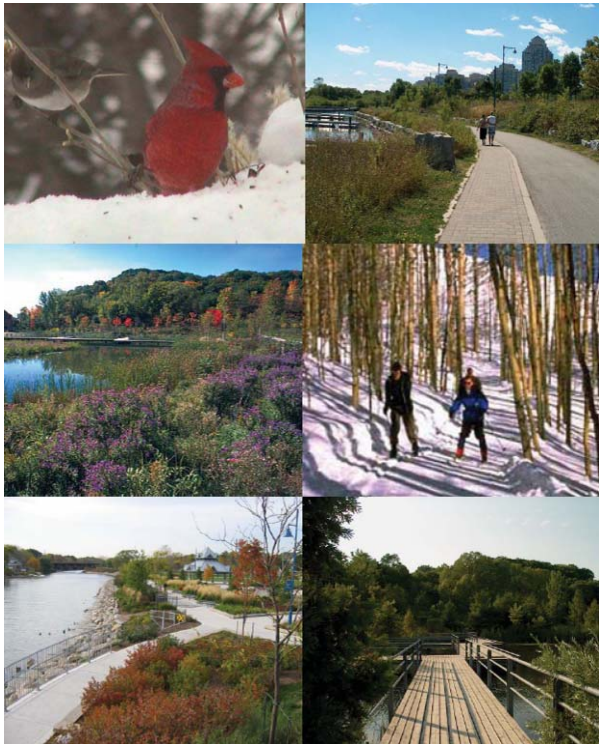


District Policies Review Public Engagement Process



Qualities of Great Waterfront Community

Balanced Use of Natural Areas

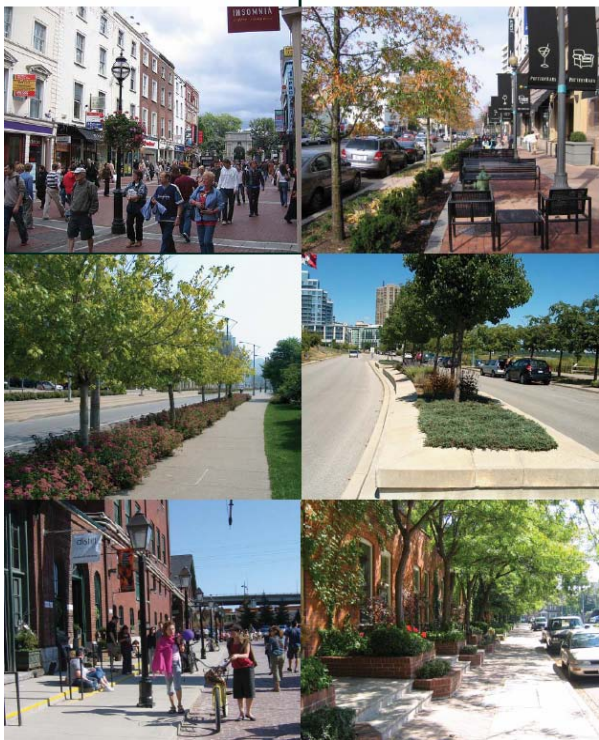


District Policies Review Public Engagement Process



Qualities of Great Waterfront Community

Streets for People

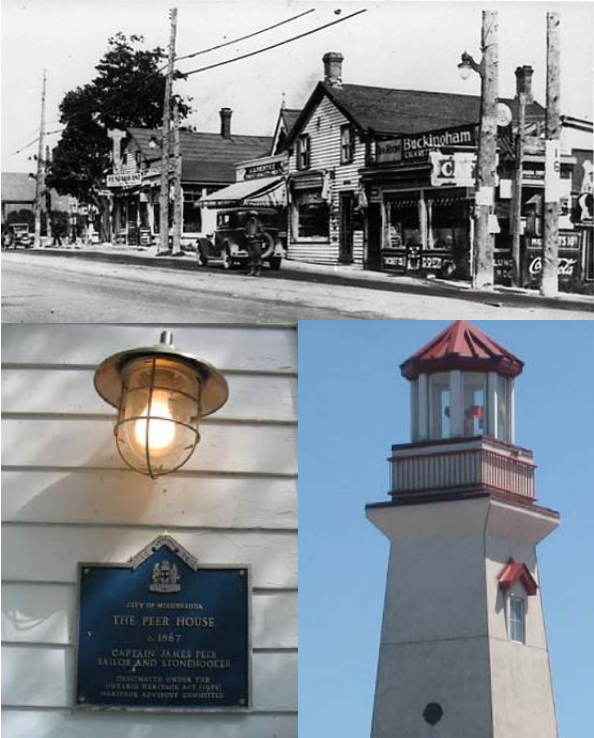


District Policies Review Public Engagement Process



Qualities of Great Waterfront Community

Heritage



District Policies Review Public Engagement Process



Qualities of Great Waterfront Community

Year Round Use



District Policies Review Public Engagement Process



Qualities of Great Waterfront Community

Options for Travelling:
walking, biking, transit, vehicles

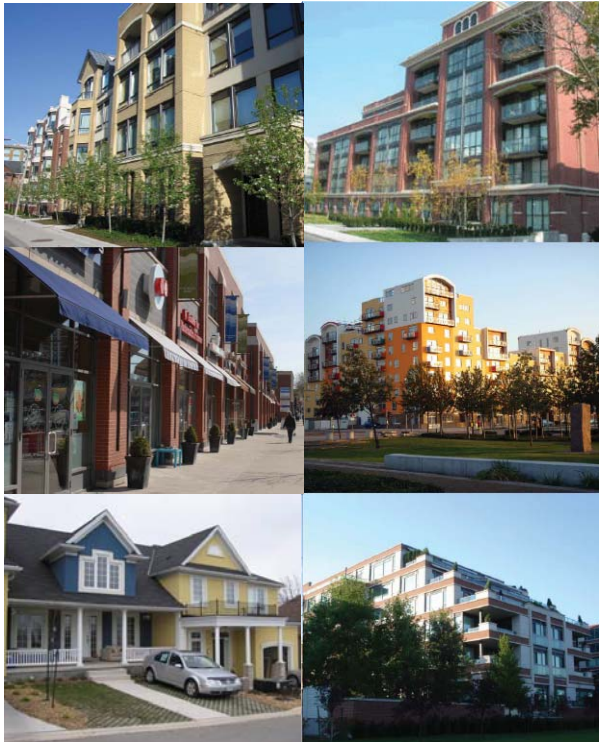


District Policies Review Public Engagement Process



Qualities of Great Waterfront Community

Built Form: Appropriate Building Scale



Qualities of Great Waterfront Community

Active Building Uses



District Policies Review Public Engagement Process



Qualities of Great Waterfront Community

Activities For All Ages

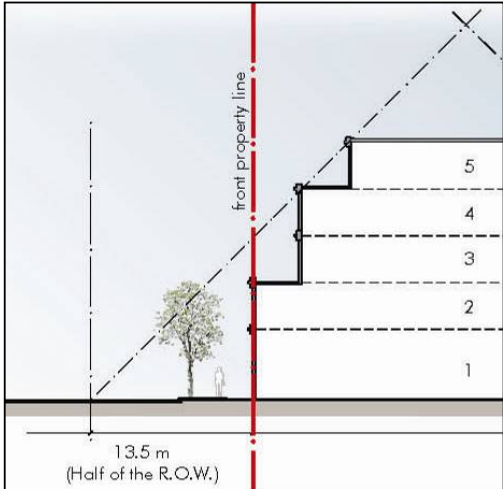


District Policies Review Public Engagement Process



How Does it Happen?: Built Form

Determine height and massing from street.



How Does it Happen?: Built Form

Test best built form.



District Policies Review Public Engagement Process



How Does it Happen?: Built Form

Contributes to what happens at the street-level.



How Does it Happen?: Streets

Benches, lighting, signs and places to meet your friends.



How Does it Happen?: Parks

Providing places to play and gather.



District Policies Review Public Engagement Process





***Workshop
10:50am to 11:35am***

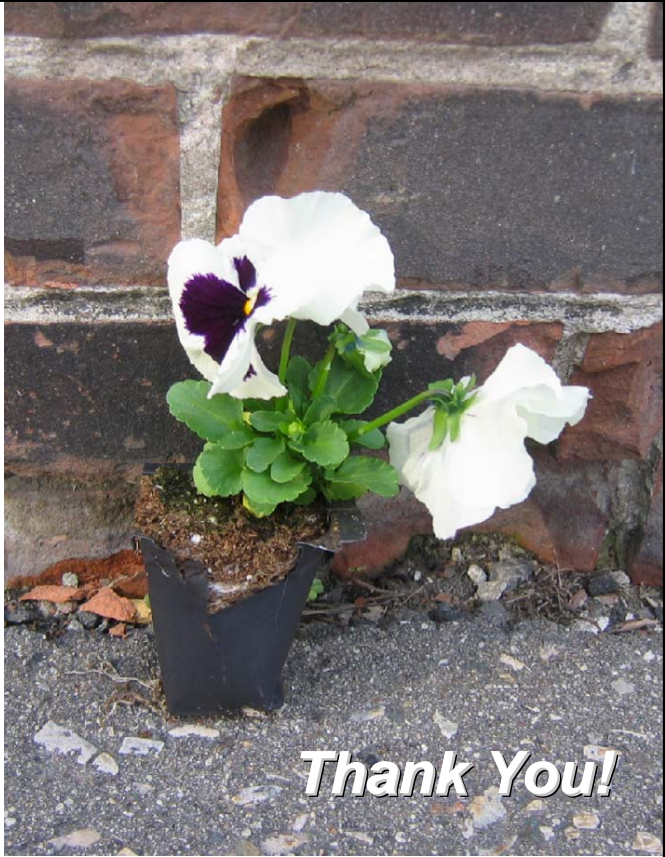
Report Back
11:35am to 11:50am

What did your group have to say?



Next Steps

Today's workshop will be summarized and posted on the City's website.



Important Information

City Website for Project:

www.mississauga.ca/lakeviewportcreditreview

City Contacts:

Lakeview District:

Karin Phuong, City Planner

(905)615-3200 x3806

Karin.phuong@mississauga.ca

Port Credit District:

Susan Tanabe, City Planner

(905)615-3200 x3807

Susan.tanabe@mississauga.ca

District Policies Review Public Engagement Process

