

An aerial photograph of a suburban community. The top half shows a residential area with a grid of streets and a golf course. The bottom half shows a waterfront area with a marina, a large building, and a parking lot. The text is overlaid on the image.

***A Chance to Shape Your Community  
Small Gestures Mean a lot Over Time***

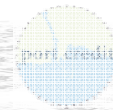
Lakeview and Port Credit District Policies Review  
**Youth Outreach: Lakeview District**  
April 8, 2008

## Workshop Schedule:

- 10 Minute Presentation
- 5 Minute Post It Note Exercise
- 60 Minutes Workshop
- 15 Minutes Reporting Back



District Policies Review Public Engagement Process



## Study Team Introduction

### **Brook McIlroy Planning + Urban Design/PACE Architects**

Anne McIlroy, Principal

Jana Joyce, Landscape Architect

Stacie Amo, Urban Designer



District Policies Review Public Engagement Process



### Study Team Purpose

- Consultants to the City
- Helping the City find out what the community wants
- Helping the City create new rules for development and growth

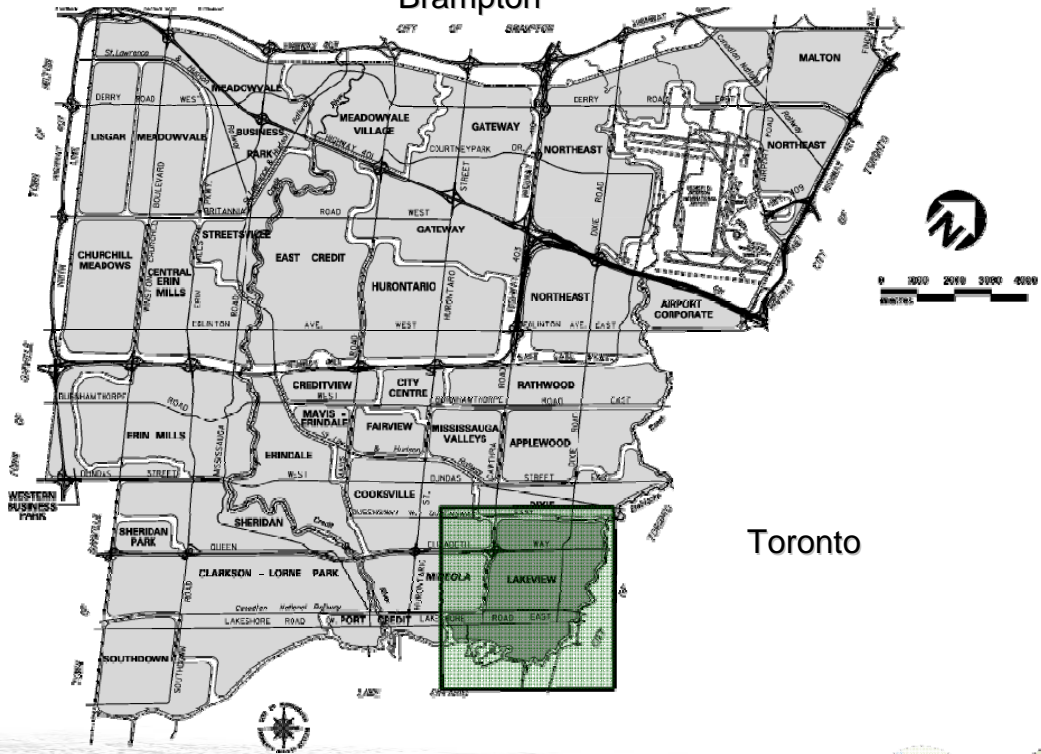


District Policies Review Public Engagement Process



# Community Characteristics: Context

## Brampton



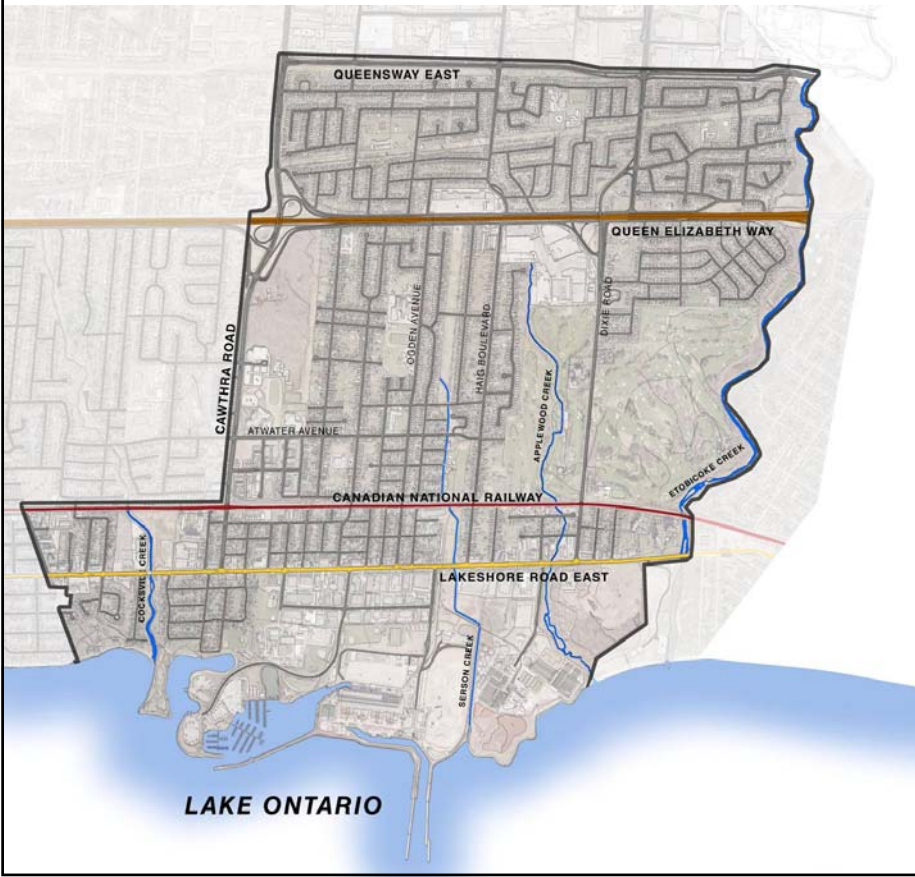
Oakville

Toronto

District Policies Review Public Engagement Process

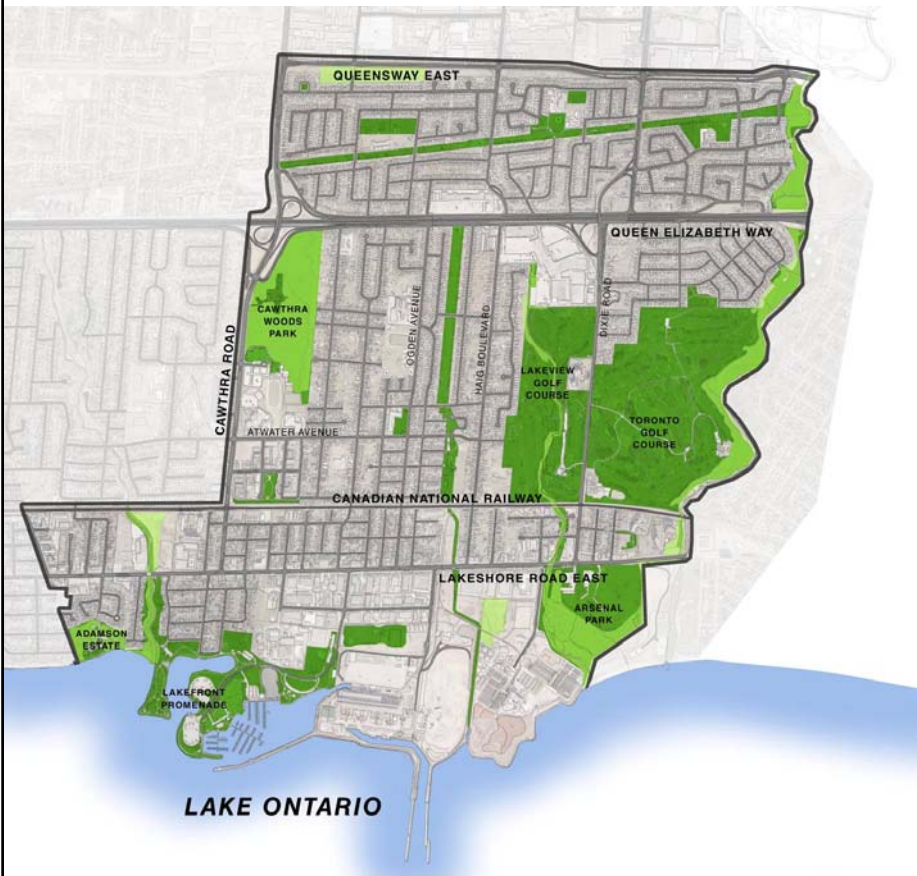


# Community Characteristics: Primary Physical Elements



- LEGEND**
- Queen Elizabeth Way
  - CNR
  - Lakeshore Corridor
  - Creeks
  - Lake Ontario
  - Streets

# Community Characteristics: Green Spaces and Natural Areas



## LEGEND

- Parks
- Natural Areas Overlay

# Qualities of Great Waterfront Community



District Policies Review Public Engagement Process



# Qualities of Great Waterfront Community

Sustainable: Environmentally Responsible



District Policies Review Public Engagement Process



# Qualities of Great Waterfront Community

Connected to the Water

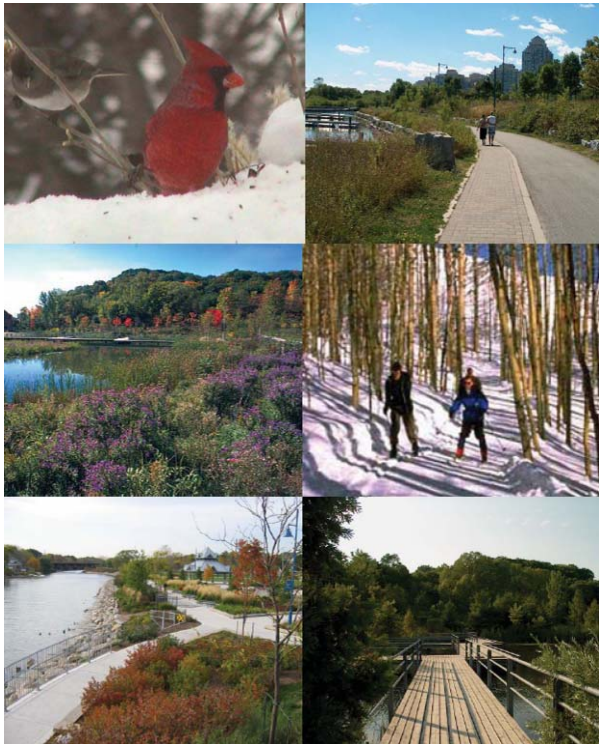


District Policies Review Public Engagement Process



# Qualities of Great Waterfront Community

Balanced Use of Natural Areas

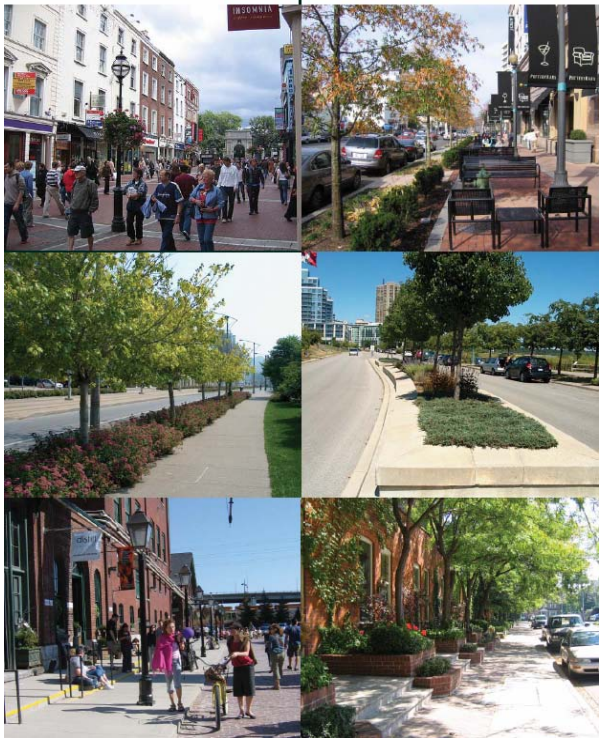


District Policies Review Public Engagement Process



# Qualities of Great Waterfront Community

## Streets for People



District Policies Review Public Engagement Process



# Qualities of Great Waterfront Community

Heritage



District Policies Review Public Engagement Process



# Qualities of Great Waterfront Community

Year Round Use



District Policies Review Public Engagement Process



# Qualities of Great Waterfront Community

Options for Travelling:  
walking, biking, transit, vehicles

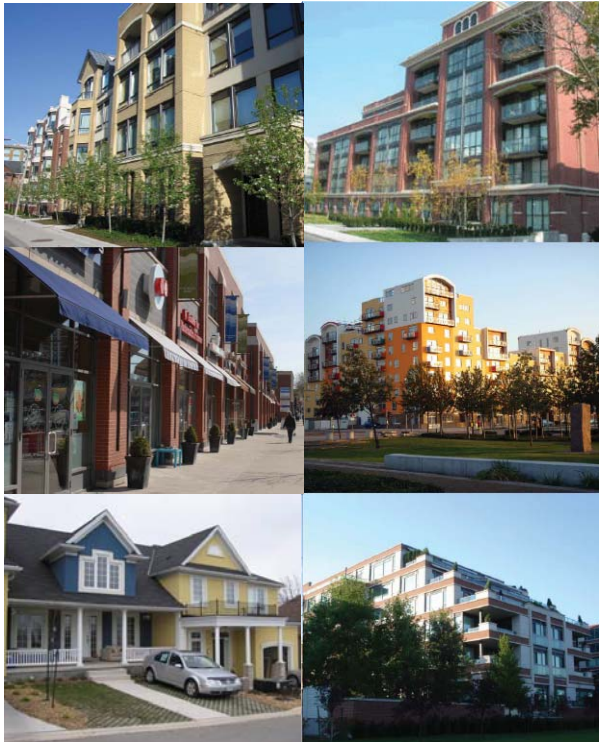


District Policies Review Public Engagement Process



# Qualities of Great Waterfront Community

Built Form: Appropriate Building Scale



District Policies Review Public Engagement Process



Qualities of Great Waterfront Community

Active Building Uses



District Policies Review Public Engagement Process



# Qualities of Great Waterfront Community

Activities For All Ages

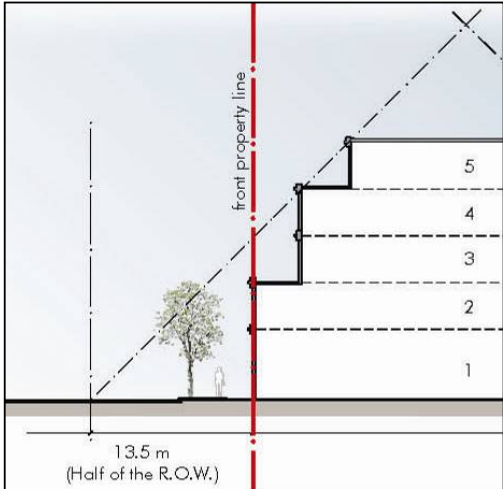


District Policies Review Public Engagement Process



# How Does it Happen?: Built Form

Determine height and massing from street.



# How Does it Happen?: Built Form

Test best built form.



District Policies Review Public Engagement Process



# How Does it Happen?: Built Form

Contributes to what happens at the street-level.



District Policies Review Public Engagement Process



# How Does it Happen?: Streets

Benches, lighting, signs and places to meet your friends.



# How Does it Happen?: Parks

Providing places to play and gather.



District Policies Review Public Engagement Process



## Today's Workshop

### Tell us about your community:

What is important to you and what makes it special?

What do you like / dislike?

What is missing?

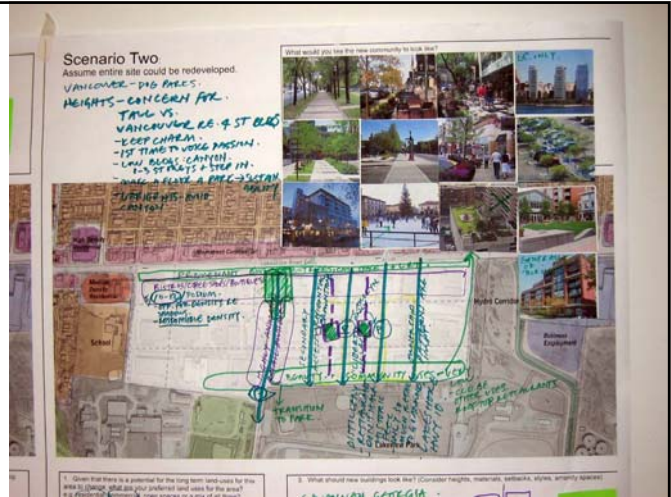
Where are your favourite places?

### Share your ideas (Using the Stickers):

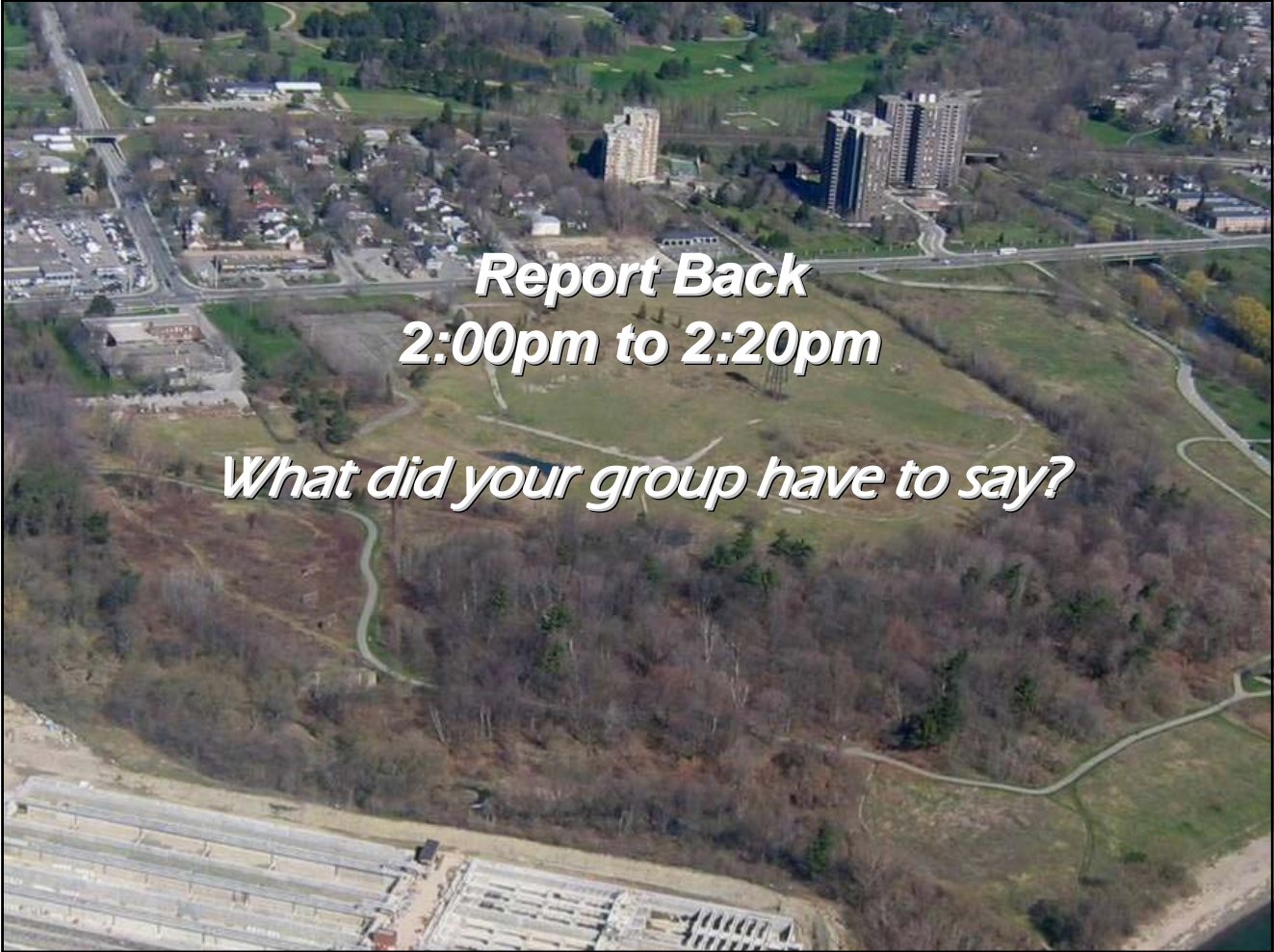
What are your favourite public spaces and parks?

Which are your favourite buildings?

What would you change?

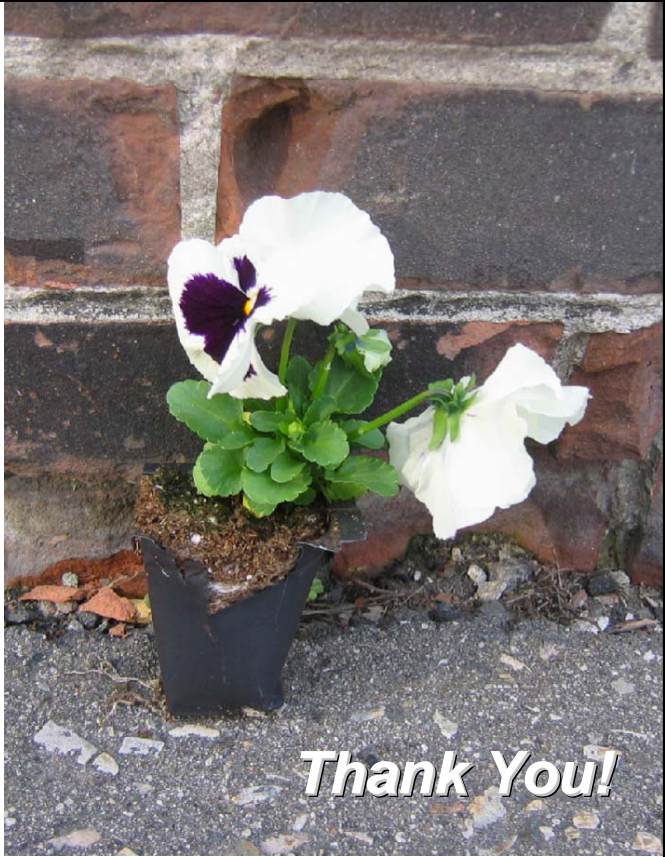






**Next Steps**

**Today's workshop will be summarized and posted on the City's website.**



## Important Information

City Website for Project:

**[www.mississauga.ca/lakeviewportcreditreview](http://www.mississauga.ca/lakeviewportcreditreview)**

City Contacts:

**Lakeview District:**

Karin Phuong, City Planner

(905)615-3200 x3806

[Karin.phuong@mississauga.ca](mailto:Karin.phuong@mississauga.ca)

**Port Credit District:**

Susan Tanabe, City Planner

(905)615-3200 x3807

[Susan.tanabe@mississauga.ca](mailto:Susan.tanabe@mississauga.ca)

District Policies Review Public Engagement Process

