



Ottawa BRT



### Next Steps

Public information centres (PICs) will be held in the fall of 2008 to display the preliminary design of the busway and stations and to receive public comment.

The comments the BRT Project office received from the spring 2008 PICs assisted in the preliminary design stage and helped to ensure the BRT is as attractive as possible for users.

Please visit the BRT website at: [www.mississauga.ca/brt](http://www.mississauga.ca/brt) regularly to learn when these PICs are planned or watch your local newspaper for a published notice.

### How do I get more information?

☎ 905-615-4636

[www.mississauga.ca/brt](http://www.mississauga.ca/brt)

[transit.info@mississauga.ca](mailto:transit.info@mississauga.ca)

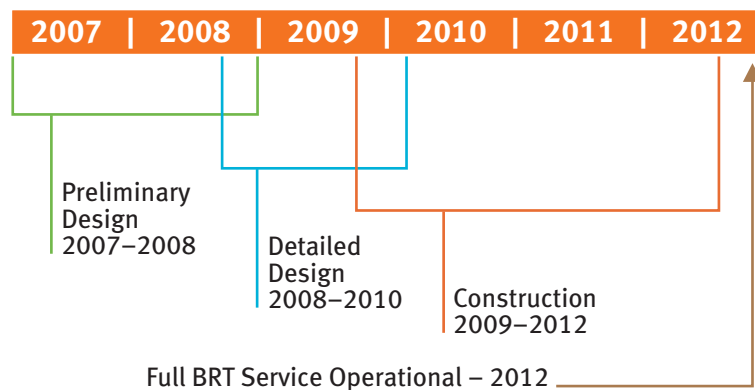
### Project Schedule:

Following the preliminary design process, the BRT Project will move into detailed design. The detailed design phase will begin in late fall of 2008 to refine the preliminary design and station concepts.

Construction is expected to begin in late 2009 with the busway being built in two segments: between Winston Churchill

Boulevard and Erin Mills Parkway on the north side of Highway 403; and between Hurontario Street (Mississauga City Centre) and Renforth Drive alongside Eastgate Parkway and Eglinton Avenue. To connect these segments, buses will continue to use Highway 403 and Centre View Drive. Construction is expected to be complete by the late fall of 2012.

### Mississauga BRT Project Schedule



# RAPID

FALL 2008 | VOL 2 | MISSISSAUGA BUS RAPID TRANSIT NEWS

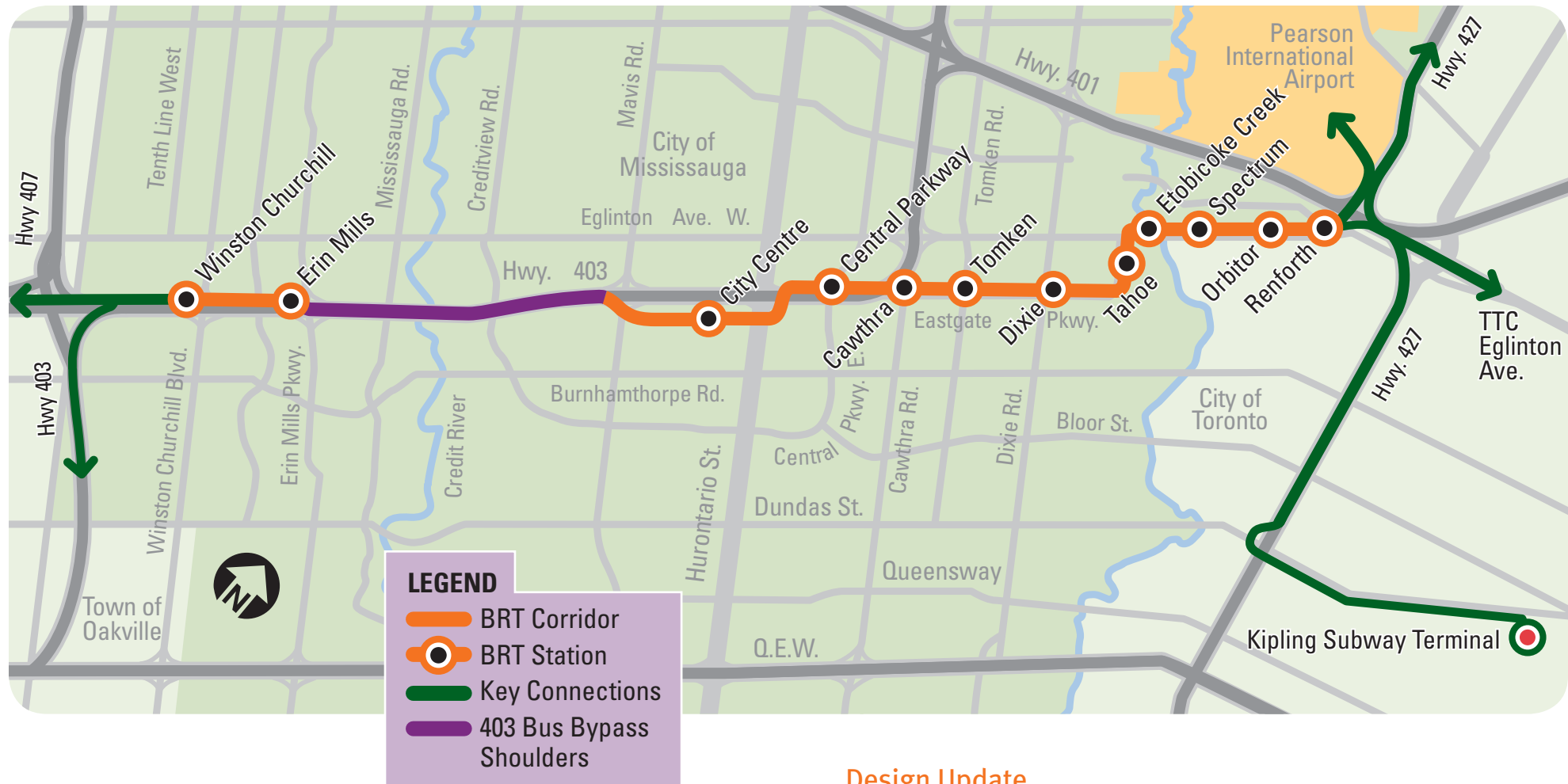


### IN THIS ISSUE

What is the BRT Project?  
Design Update  
Project Schedule  
Next Steps







## What is the Mississauga BRT Project?

The City of Mississauga, in partnership with GO Transit, is constructing a new busway across the city (a two-lane, bus-only roadway) for Mississauga and GO Transit buses. This new busway will run along the Highway 403, Eastgate Parkway and Eglinton Avenue corridors, serving thousands of riders each day, making it faster and easier for you to travel through Mississauga and the Greater Toronto Area (GTA).

The BRT (Bus Rapid Transit) is about moving you where you need to go in a faster and more convenient way. This new service is in addition to Mississauga's normal transit service offering you a more direct way to travel.

The busway will have 12 stations at major road crossings and in the Mississauga City Centre as indicated on the corridor map above.

## Design Update

In the past year, the BRT Project has been in the preliminary design stage. By the fall of 2008, this stage will be nearing completion. The work to date has included the:

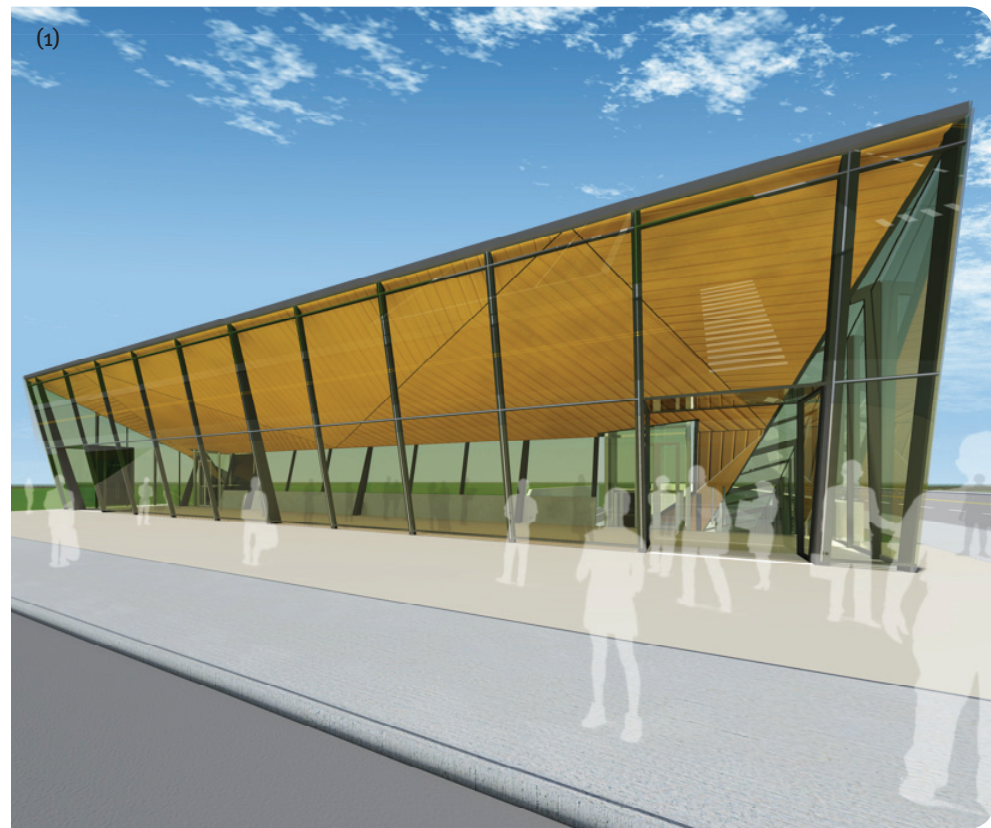
- preliminary design of the busway alignment
- creation of station design concepts
- design of a service plan concept and route map to integrate new BRT routes with existing Mississauga Transit Services
- beginning of a public consultation process
- refinement of estimated project costs

- creation of a project schedule for construction implementation
- hiring of branding consultants to develop a marketing and promotional plan for the BRT

Station design concepts have been developed for the busway. High quality stations will welcome users with elevators, protected walkways, an open secure environment, clear and up-to-date travel information, and attractive architecture. Parking areas will be well lit and sidewalks and multi-use pathways leading to stations will be convenient and inviting.

The following pictures will give you an idea of what a typical BRT station will look like. The first one (1) shows the on-street plaza where you enter the BRT station. From

there, you can take an elevator or stairs down to the busway platform. The second picture (2) shows the busway platform area where you board or disembark buses. The last picture (3) shows an aerial view of the typical BRT station.



BRT Station Views

