

# Civic Centre and Central Library Square Redevelopment

... the vision of an outdoor Community Centre...



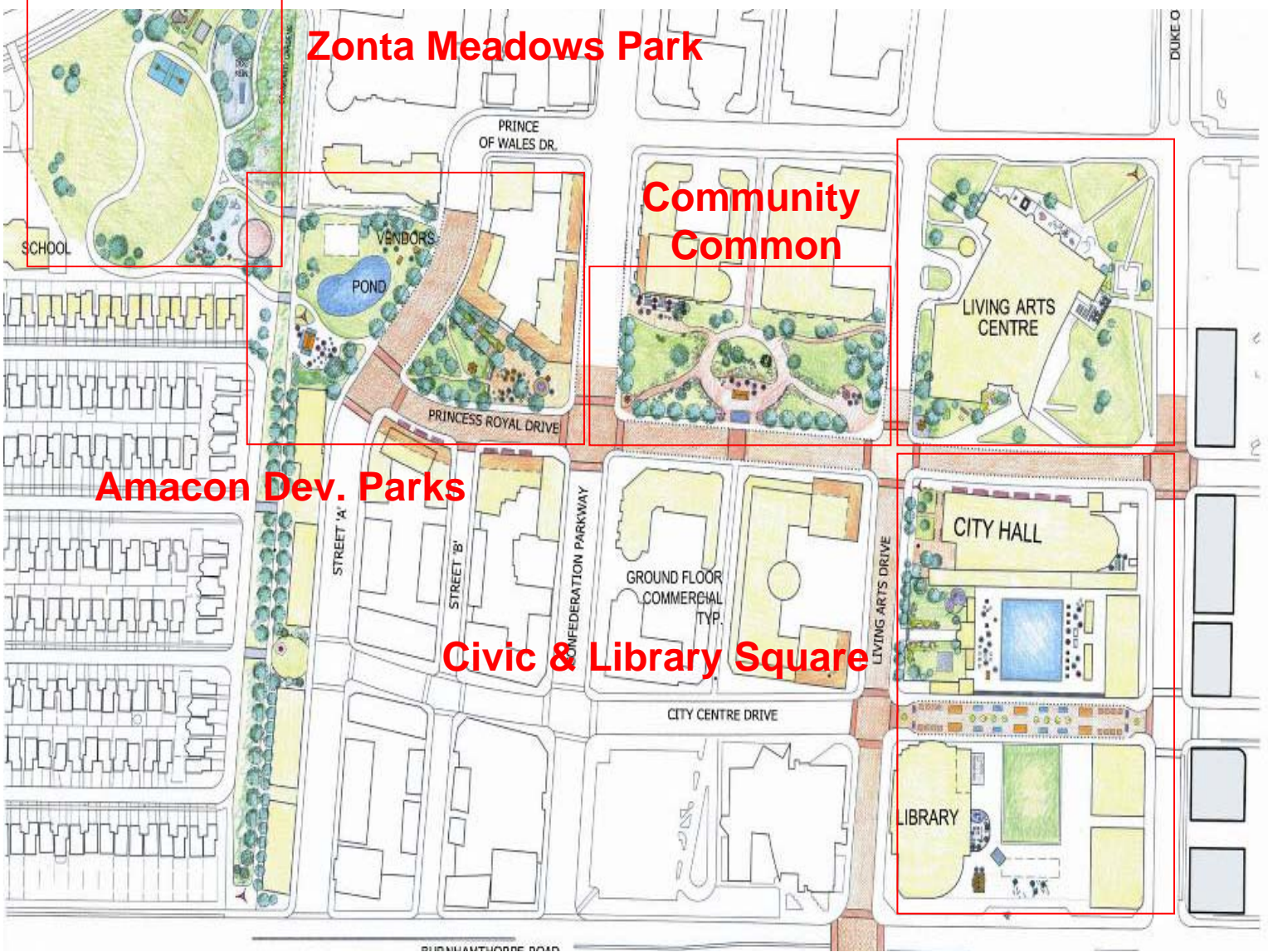


## A Vision for a Downtown Plaza

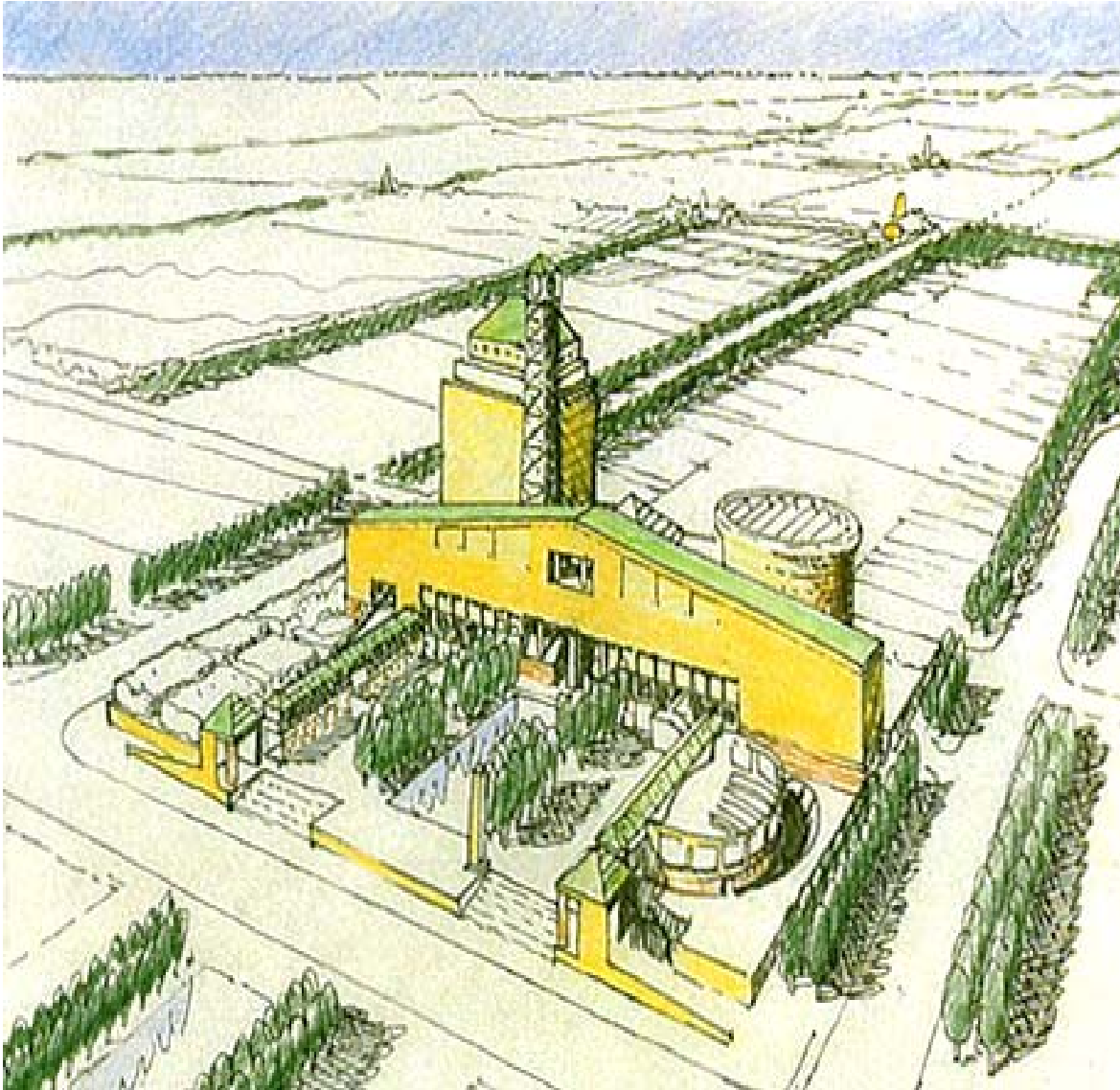
*The City Hall and Library will function as one, cohesive Civic plaza designed and managed as an outdoor community and cultural centre - a year-round destination where Mississauga's diverse communities can gather together. With strong pedestrian connections between them, this space can bring a sense of identity to City Centre.*

From PPS presentation – Jan. 15, 2007

# Placemaking Vision Concept 2007 - Study Area



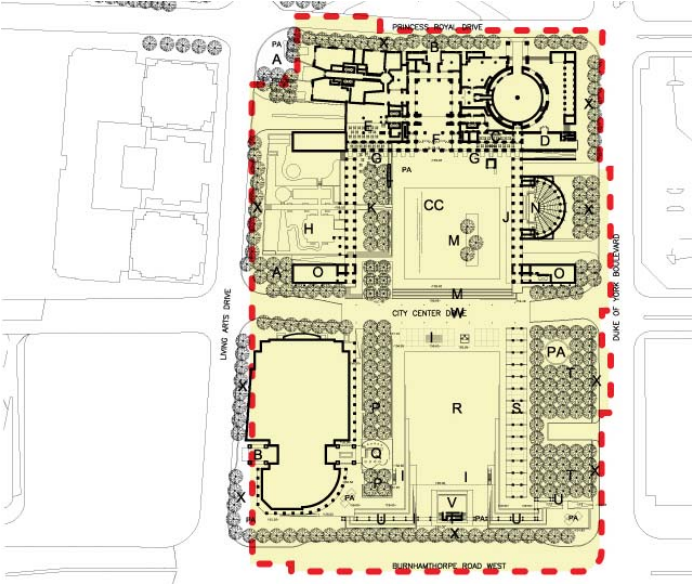
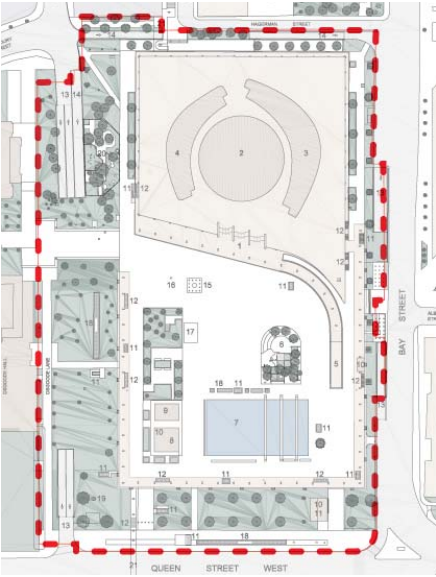
# Conceptual Framework and Building Heritage



“...the Civic Centre consists of two blocks. One will contain the new City Hall and 15,000 square metres of Civic Square, the other will contain cultural buildings and the remainder of the Civic Square.”

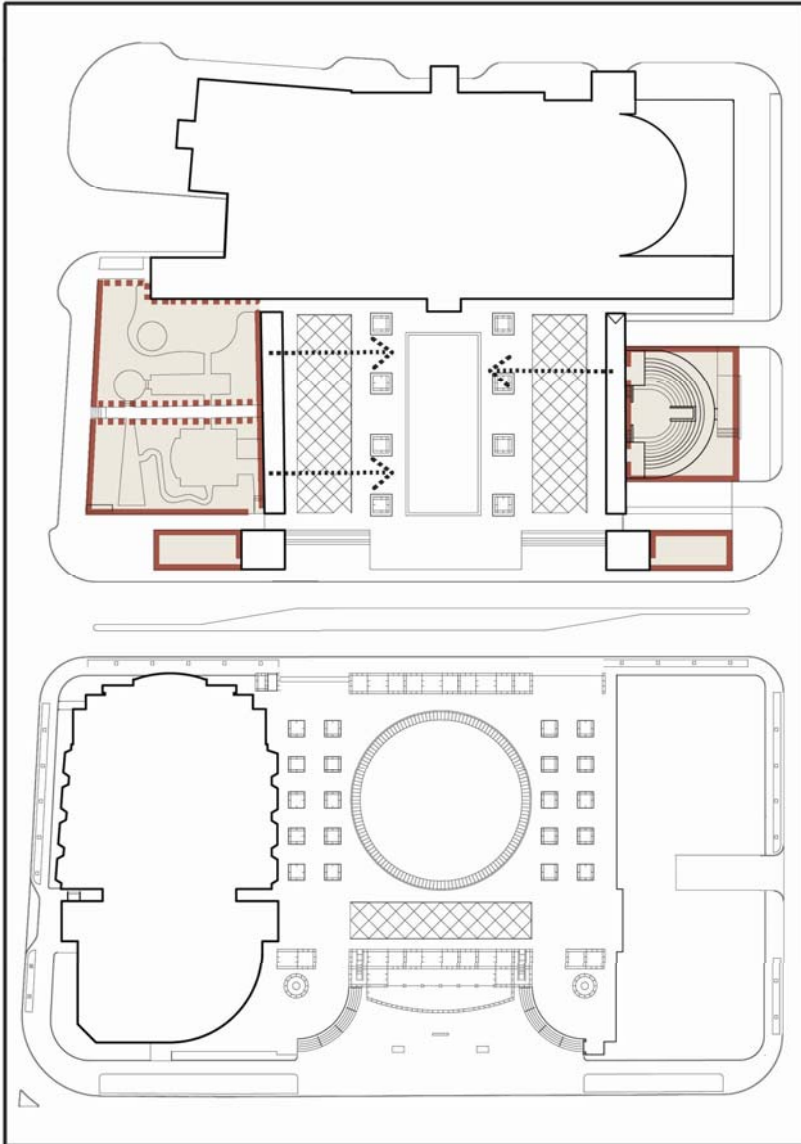
# Issue: Scale and Grain

...enormous spaces – lack of human scale...



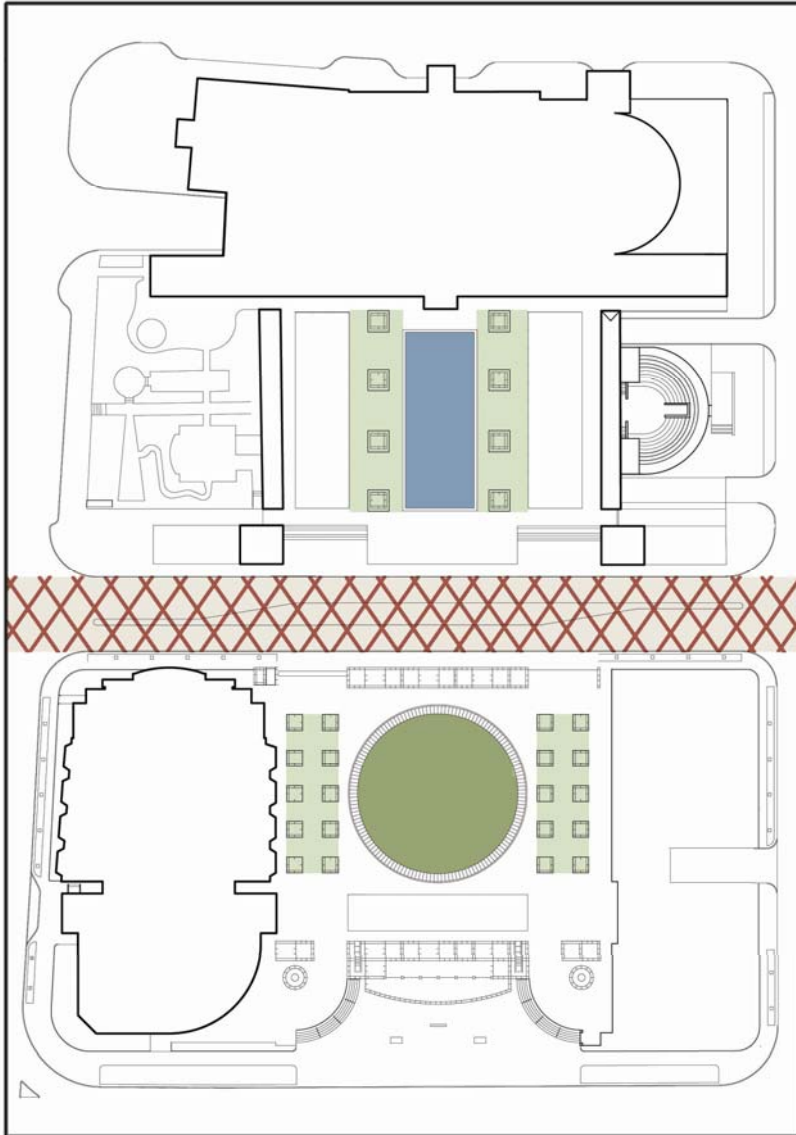
# Issue: Unconnected Spaces

... City Hall Square as a centre hall plan accessing a series of rooms...



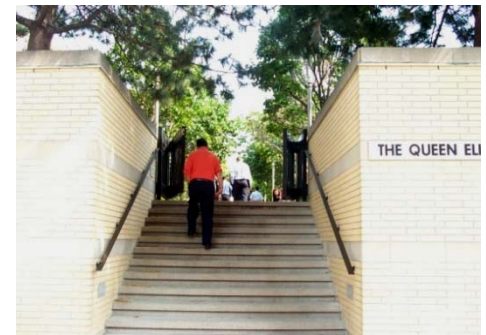
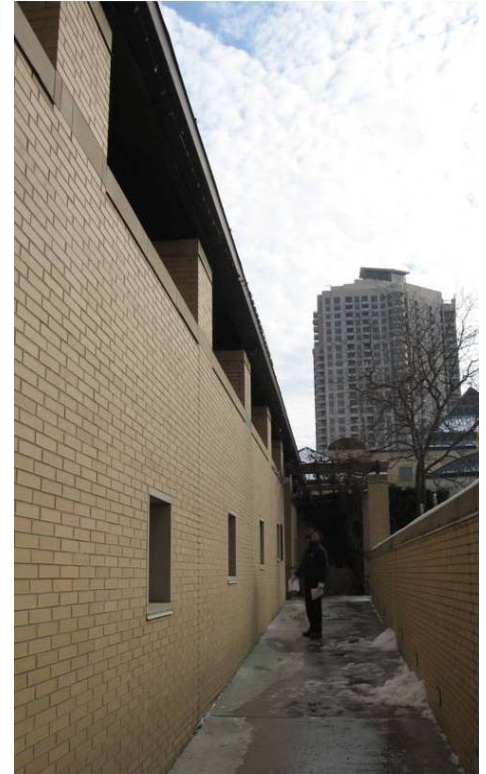
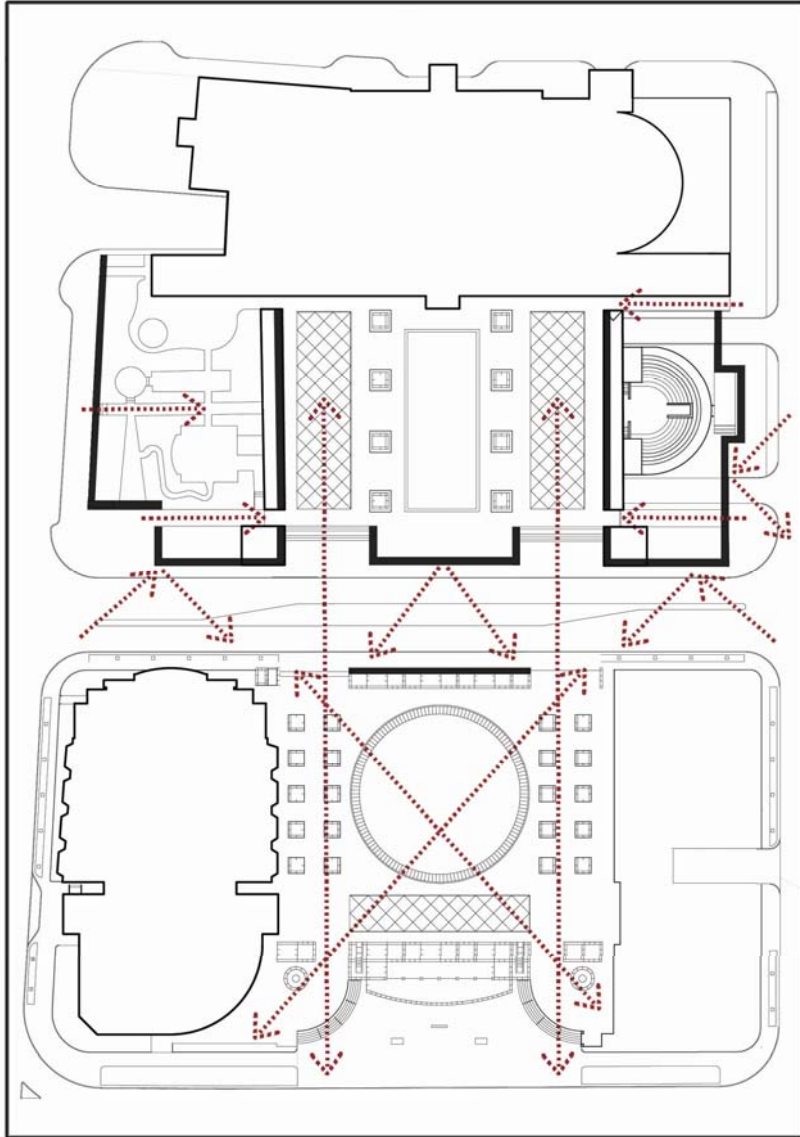
# Issue: Separation

...separate landscapes, separate materials, separate squares...



# Issue: Inaccessibility

...restricted access and views...

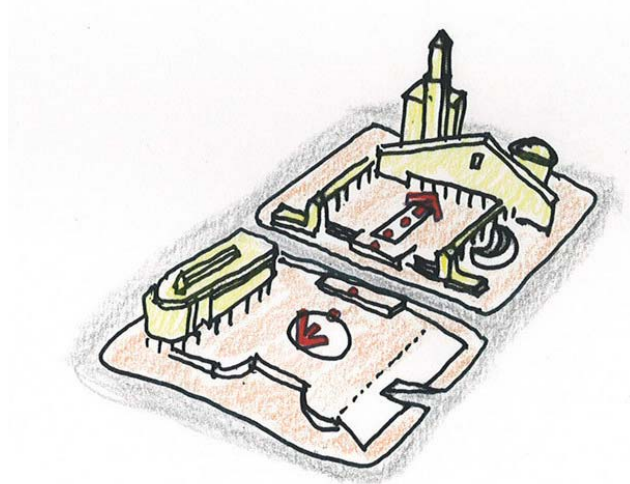




# The Road in a Pedestrian Precinct

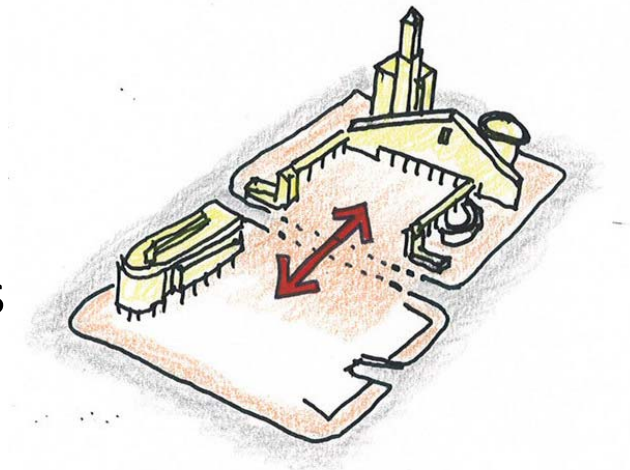
## Existing Two Squares

- 2 lanes driving
- 2 lanes parking +



## Proposed

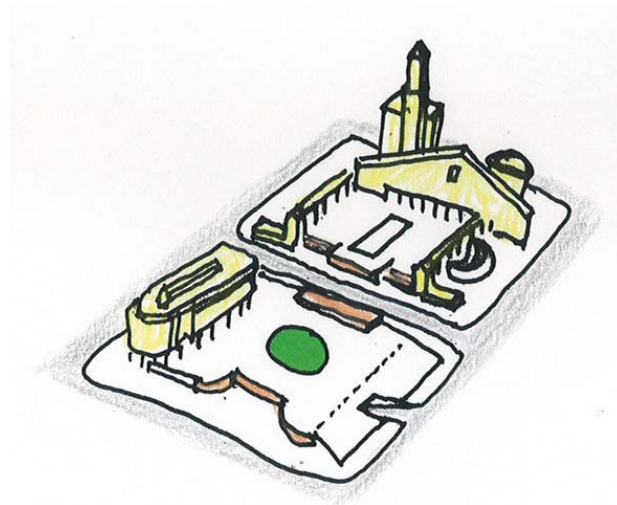
- A contiguous space
- 2 lanes driving + bollards



# The Continuity of Public Space

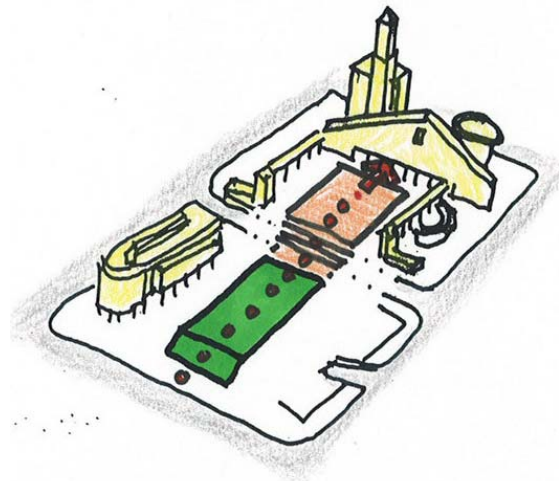
## Existing

– different levels



## Proposed

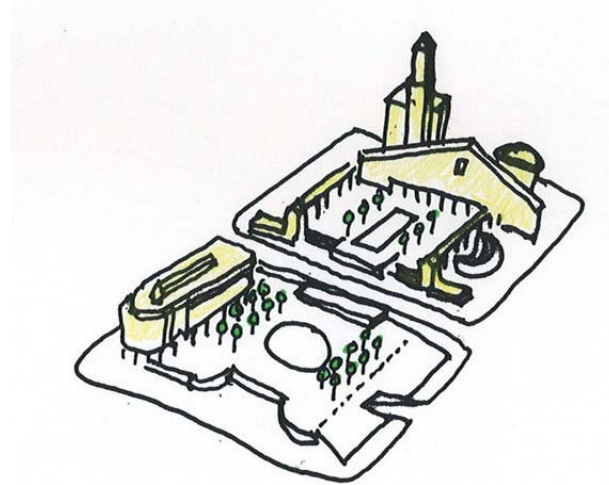
– a singular 'folded' plane



# The Definition of Public Space

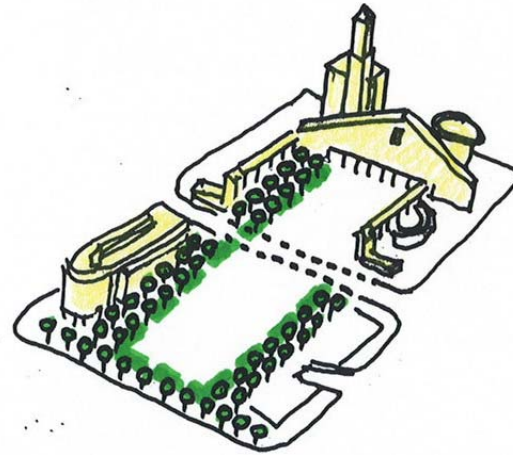
## Existing

– trees in planters



## Proposed

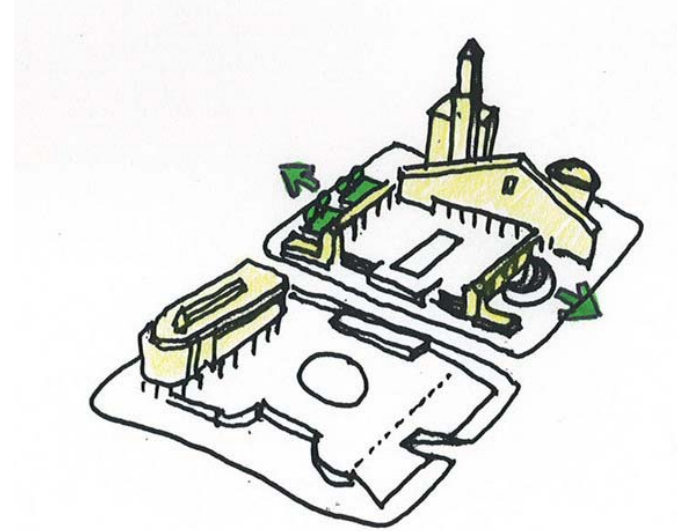
– trees as ground



# The 'Blurring' of Separate Space

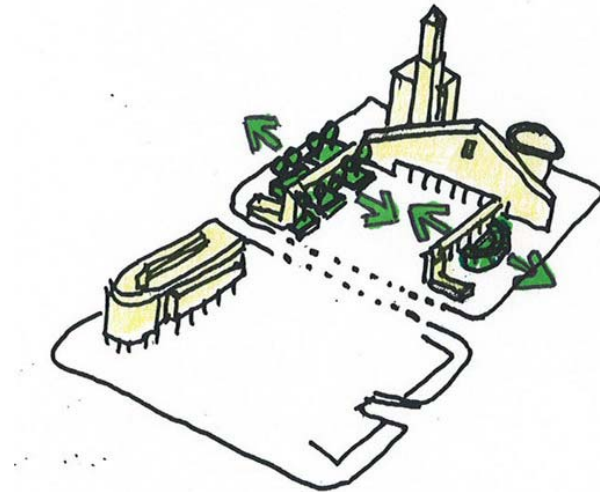
## Existing

- distinct 'side rooms'
- disconnected from the Civic Square



## Proposed

- extended spaces connected with the Civic Square



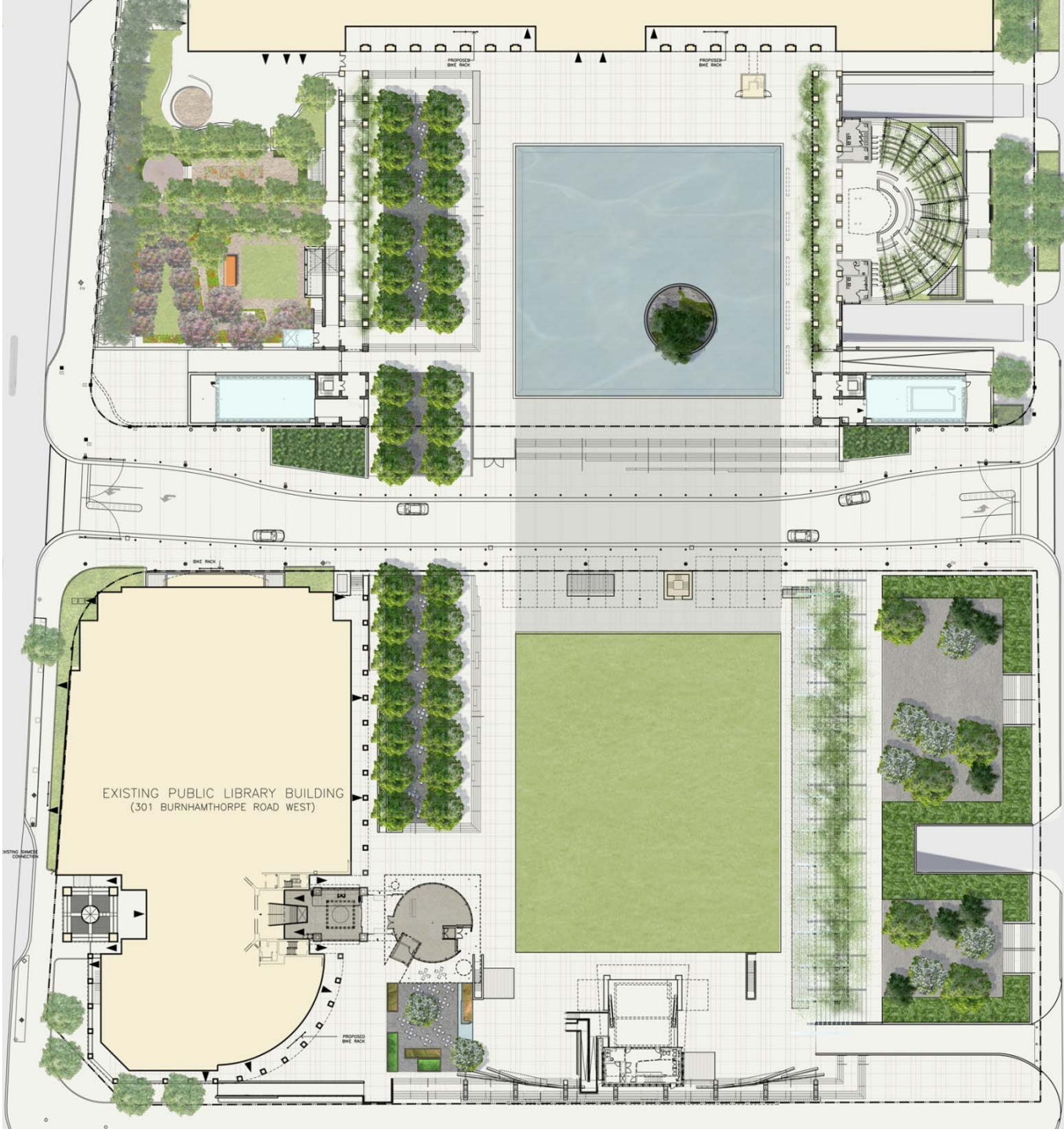
# Creating Great Civic Squares

- **Attractions & Destinations**
- **Identity & Image**
- **Flexibility in Design**
- **Amenities**
- **Management:  
Central to the Solution**
- **Seasonal Strategy**
- **Diverse Funding Sources**
- **Traffic, Transit & the Pedestrian**
- **The Inner Park & the Outer Park**
- **Needs to Reach out like an Octopus**



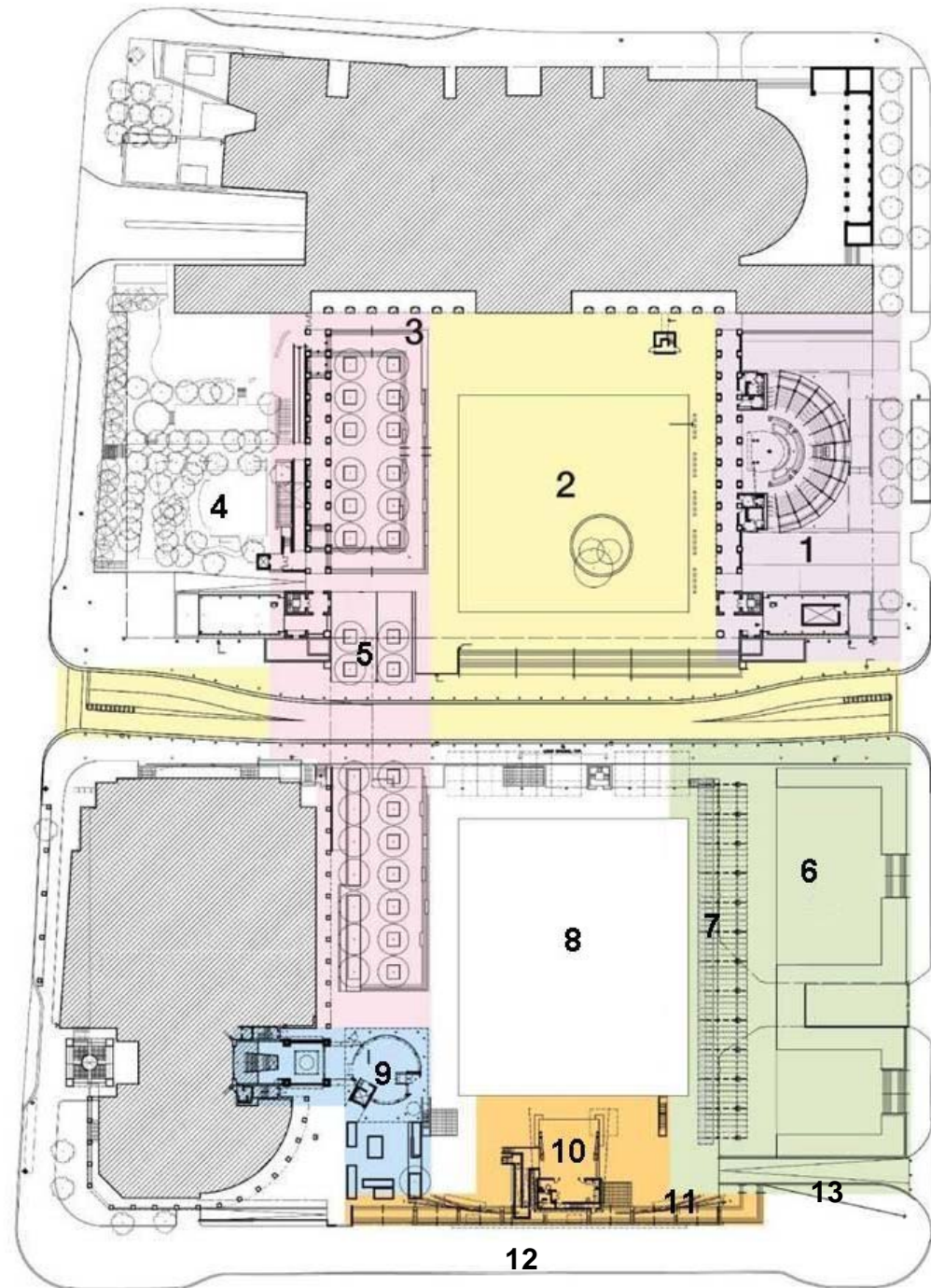
From PPS presentation – Jan. 15, 2007

# Site Plan



# Site Plan

1. Amphitheatre
2. Ice Rink, Water Feature & City Centre Dr.
3. Monument
4. Jubilee Garden
5. Raised Gardens
6. Forested Garden
7. Event vendor area
8. Lawn
9. Library Pavilion and Terrace
10. Stage
11. Media Screens
12. Burnhamthorpe Facade
13. Gateway Sign

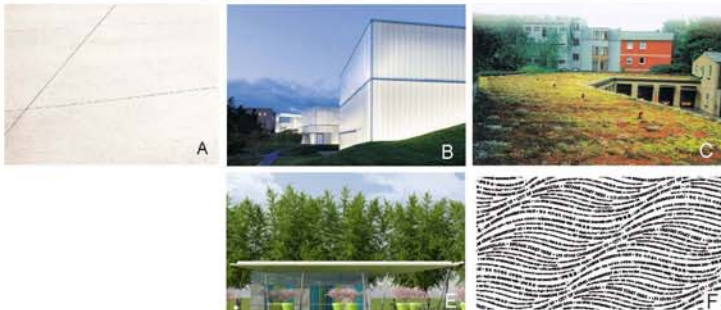


# Program Vision Statement

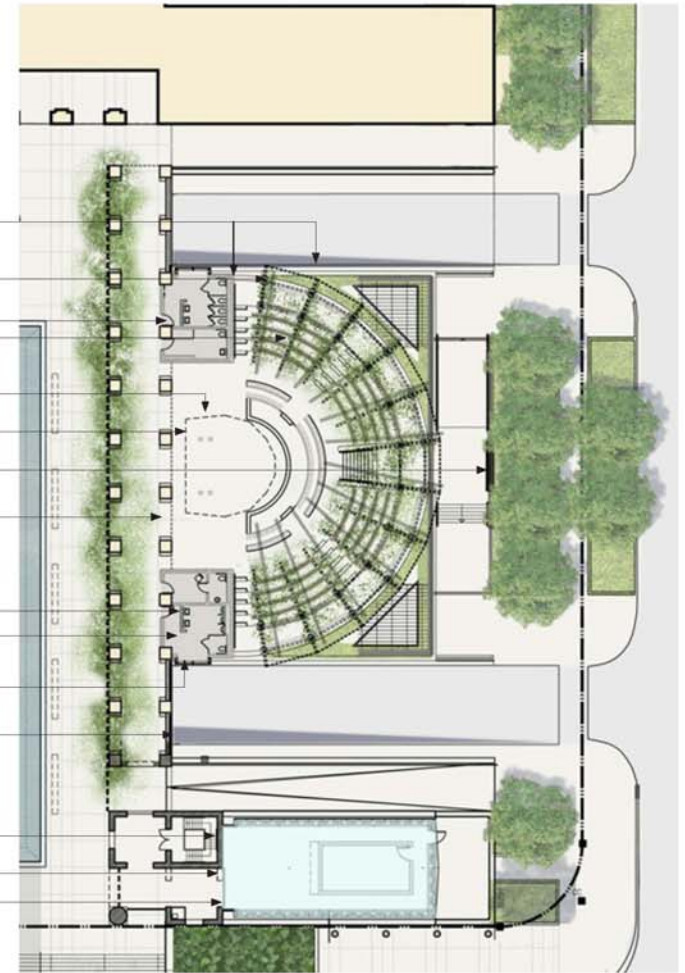
The Civic Centre program will create a vibrant downtown with year-round activity that includes a variety of unique, premium events along with daily placemaking activity that will attract both local and out-of-town visitors to the civic and cultural soul of the city.



# 1. Amphitheatre



- C. Textured Coating at back of amphitheatre & exterior of washrooms
- A. Steel Finish on Trellis and Columns at Stage
- A. Painted Metal door to match Steel Finish
- D. Composite Wood Benches
- H. Single Ply Roofing at stage
- F. Aluminum Flashing at stage roof
- E/ B1 Stainless steel railing, Glass guard
- G1. Light coloured concrete paving with sawcut pattern, light sandblasted finish (see image A)
- L. Ceramic Wall Tile washrooms and green rooms
- T. Epoxy Flooring washrooms and green rooms
- B1/B2 Aluminum curtainwall bor window clear and translucent glass, sandblasted finish
- E/ B1 Stainless steel railing, Glass guard
- G. Green Roof (see image C)
- B4. Aluminum curtainwall pattern glass, sandblasted finish, back-lit (see image E)
- F. Aluminum Flashing



# 1. Amphitheatre

## Old

- Minimal activity; locked
- MOSAIC's Friday night concert
- "Heat Sink" & uncomfortable



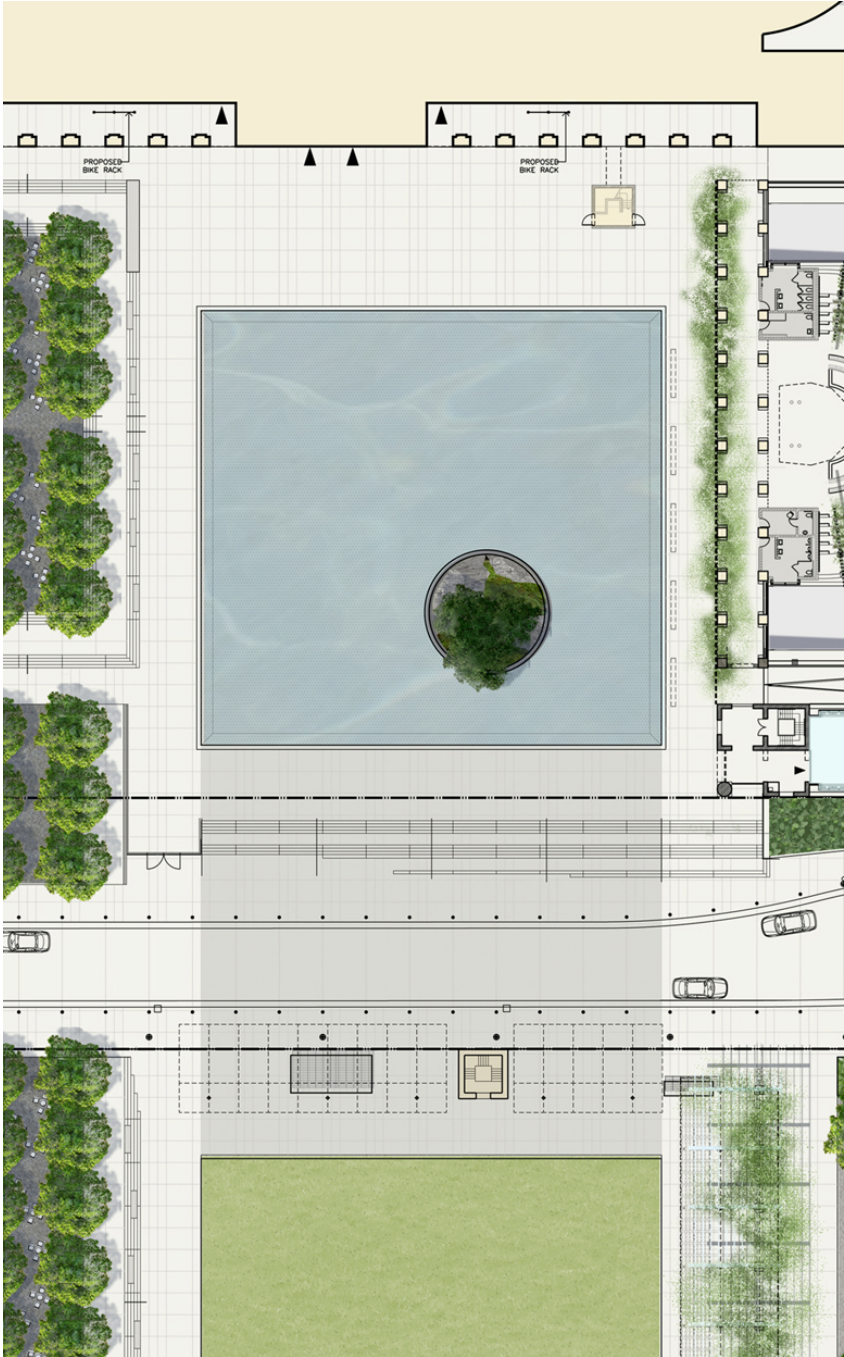
## New

- Small, intimate events; alternative to the main stage
- Story time, theatre, senior's activities, lunchtime music café
- Live music performances at weekly Friday night skating parties
- New design provides excellent sightlines and great acoustics
- Seats approximately 300
- Built-in sound system
- Updated public washroom facilities and greenroom for performers

# 2. Olympic Size Ice Rink Fountain City Centre Drive



A. East-West Section at Planter



## 2.1 Ice Rink

### Old

- Infrequent, passive use (January to March)
- Undersized, Freon coolant system



### New

- Ice surface increased by 150% and capacity to 300 skaters
- “Skate Party” programming (November to March)
- State-of-the-art ice rink will attract skaters on a daily basis
- Ice-making plant uses the latest green technology
- Built-in sound system
- Updated washroom facilities

## 2.2 Fountain

### Old

- Fountain (one jet)
- Water quality issues
- Area unsuitable for programming



### New

- Interactive fountain
- Re-circulating, treated water
- Adds visual stimulation and promotes passive place making uses
- Multi-purpose surface - easily drained and used as additional space for large festivals

## 2.3 City Centre Drive



### Old

- 4 lanes
- Curbed centre median – obstructed programming and accessibility issues
- Difficult to program

### New

- 2 lanes
- Closed to thru traffic for programming
- Multi-purpose surface with flush curbs can be used as additional space for large festivals
- textured surface will alert traffic to pedestrian zone

### 3. Monument

#### Old

- Fountain on Burnhamthorpe Rd. W. adjacent to eight lanes of traffic
- Remembrance Day celebrations in Council Chamber

#### New

- Location on upper Civic Square promotes a place of quiet reflection
- Remembrance Day City celebration could take place near the new feature



# Gardens

## 4. Jubilee Garden 5. Raised Garden 6. Forested Garden

### Old

- Jubilee Garden is a highly successful passive garden which inspired the creation of the new raised gardens

### New

- Expanded horticultural areas
- Increased irrigated green space
- Access to the square via new elevator from underground parking in Jubilee Garden
- Accessible year-round

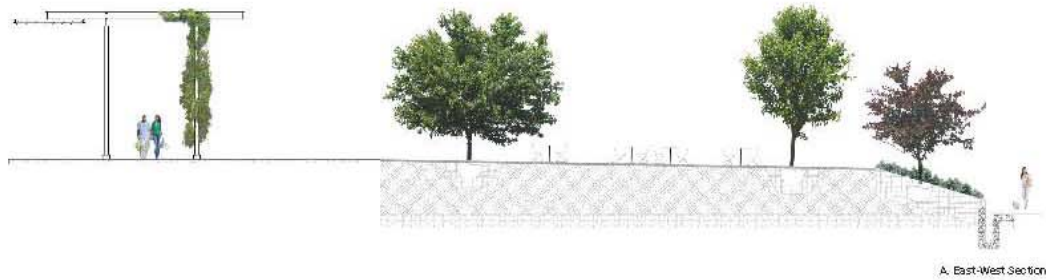




# 7. Event Vendor Area



- A. Steel Finish at Trellis Structure
- Q1. Light-colored concrete paving with sawcut pattern and light sandblasted finish (see image 'X')
- T. Crushed Granite Groundcover (see image 'B')
- E. Stainless Steel Railings
- Q. Precast concrete steps
- Wistaria Vine, planted on Trellis (See image C)
- Lawn
- Planted slopes



# 7. Event Vendor Area

## Old

- Tent erected (June to September)
- Used at events for shade



## New

- Dedicated vendor area for all events
- Opportunities for “Holiday Market” in December and “Night Market” in August
- New site services include hot and cold water, sanitary and electrical connections

## 8. Lawn

### Old

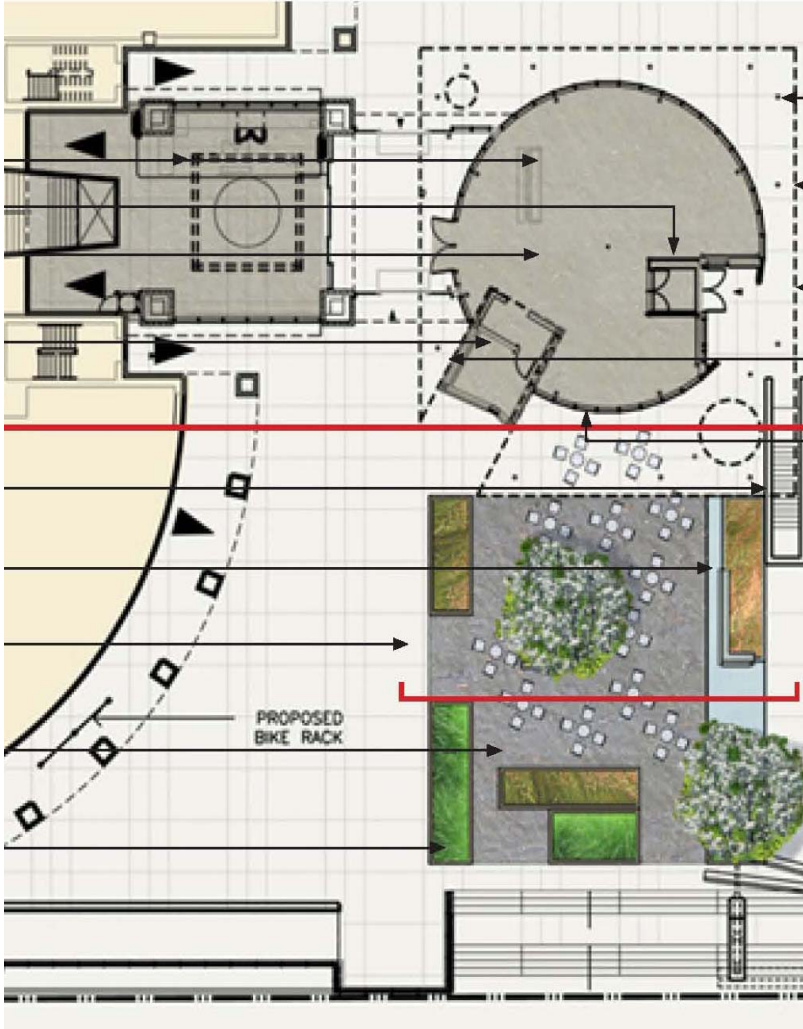
- Weekly Yoga on the Lawn activity (July and August)
- Audience seating area

### New

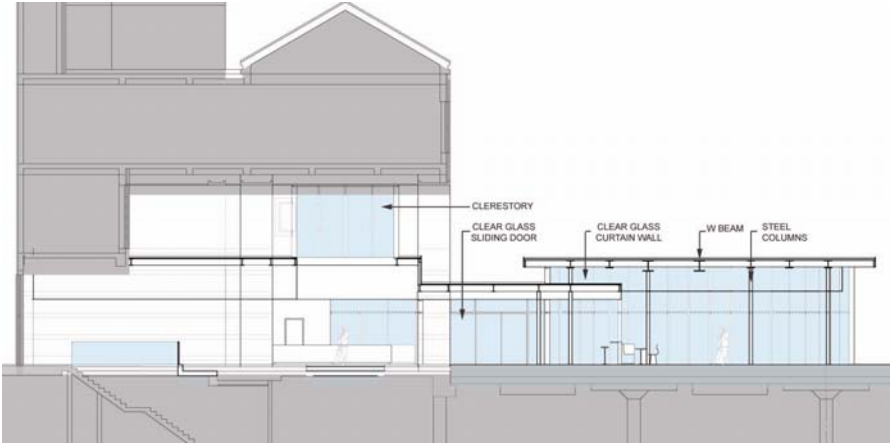
- Daily summer “Community Centre” activities, i.e.; Yoga, Tai Chi, Pilates, Spinning and sports
- Increased passive activity and audience space
- “Backyard” for condo residents



# 9. Library Pavilion and Terrace



East Elevation



East/West Building Section

## 9. Library Pavilion and Terrace

### Old

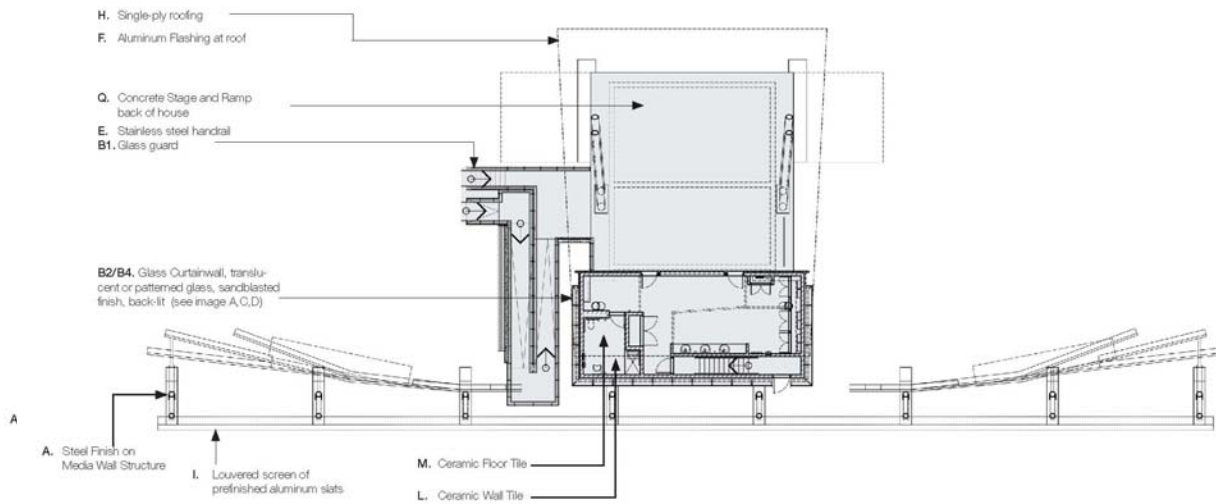
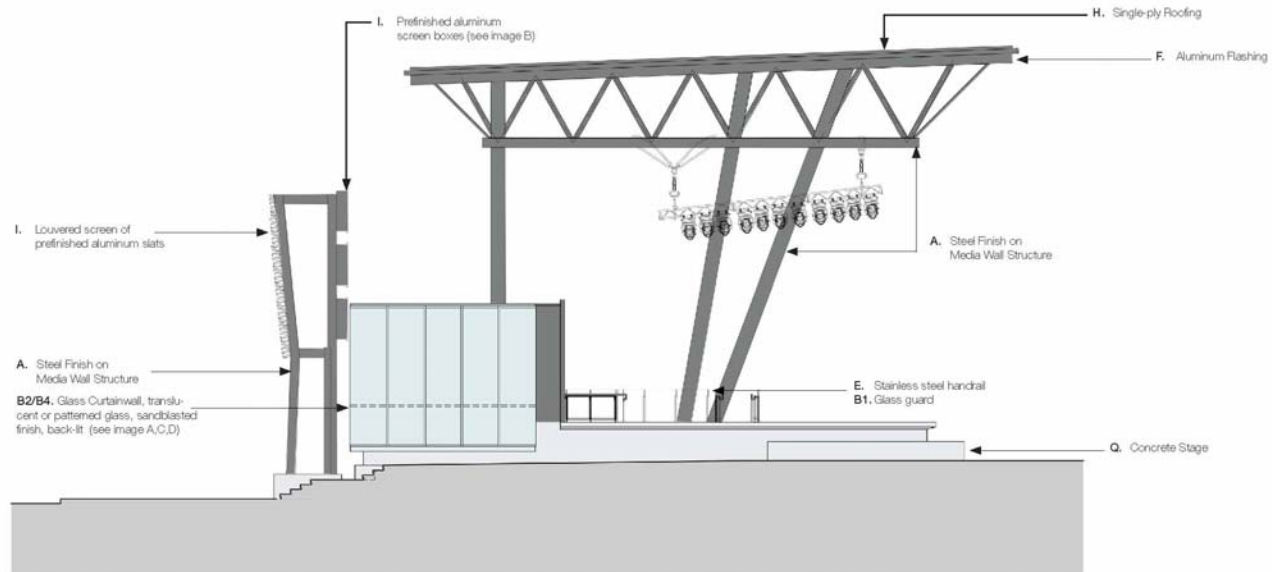
- Recessed entrance to Library



### New

- Multi-use indoor pavilion; indoor eating space, laptop work space, meeting space, reading area
- Reception area during events
- Food service in covered breezeway
- Flexible seating area
- Newspaper rack
- Wi-Fi connection

# 10. Stage



# 10. Stage

## Old

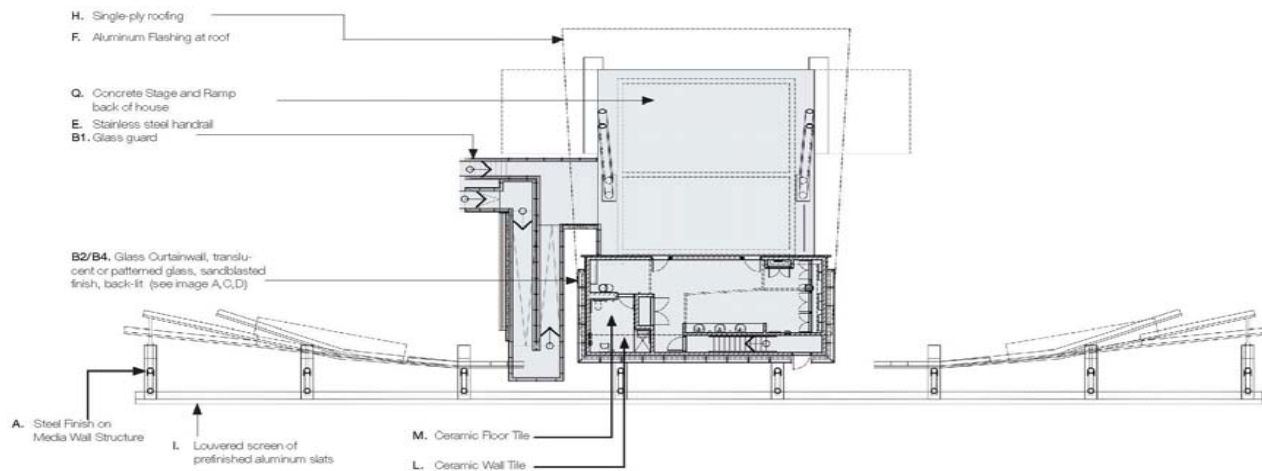
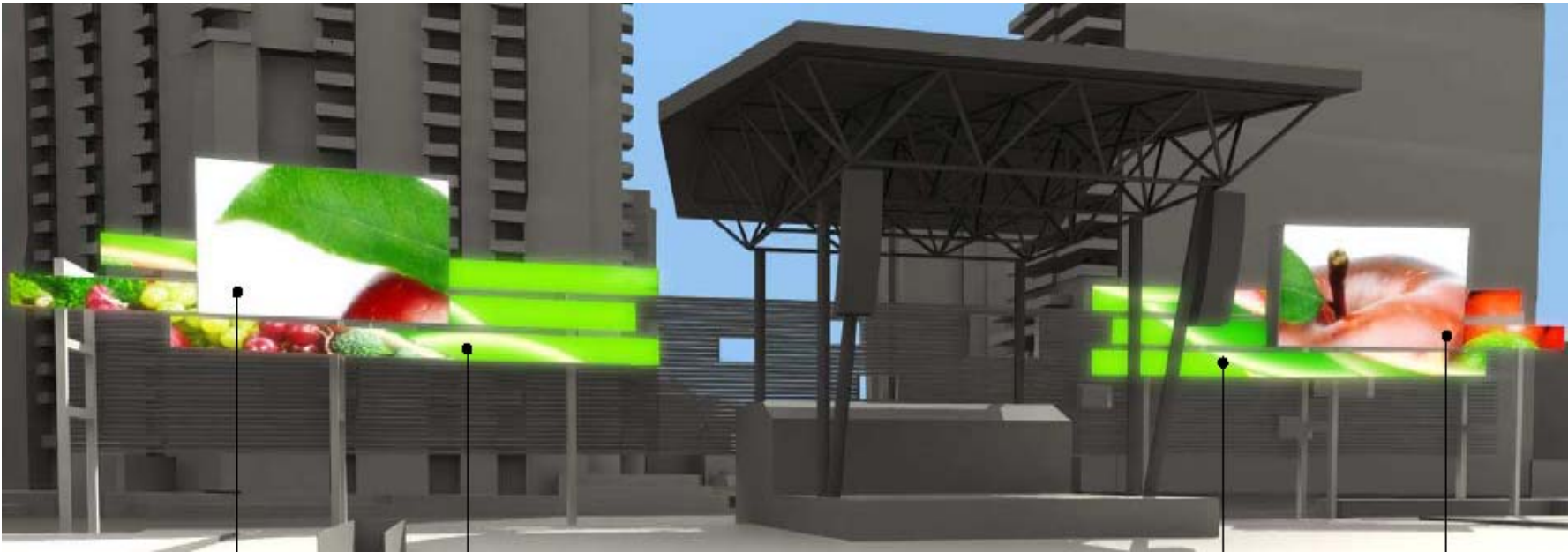
- Portable stage and Audio Visual (June to September)
- Supports locally and regionally-renowned artists
- Single source sound system

## New

- Year-round capability
- Attracts and supports community and professional artists
- Backstage area, dressing rooms and storage space
- Zoned audio system to control sound distribution



# 11. Media Screen





# 11. Media Screen

## Old

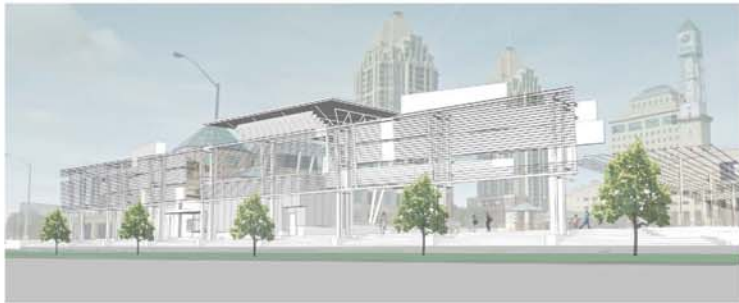
- Portable “pop-up” screen for Movie Nights

## New

- Digital art, photo and animation exhibits
- Projections of the stage shows
- Weekly Movie Nights (seasonal)
- Event Information
- Local news broadcast
- Interactive video game events, art and dance classes
- Partnership programming, e.g. LAC and corporate event launches



# 12. Burnhamthorpe Facade



# 13. Gateway Sign Concept



# 13. Gateway Sign Concept





# Thank You

[www.mississauga.ca/portal/cityhall/buildingourfuturemississauga](http://www.mississauga.ca/portal/cityhall/buildingourfuturemississauga)

or

[my.mississauga@mississauga.ca](mailto:my.mississauga@mississauga.ca)