

Councillor's Report - Winter 2009

Frank Dale

Mississauga Councillor – Ward 4



frank.dale@mississauga.ca

Telephone: 905-896-5400 Fax: 905-896-5463

Councillor's Message

2010 is now here and it should prove to be an exciting time with the many new projects and local improvements that will take place throughout our City this year. I hope this year will be a great one for you and your family filled with many happy memories.

It is my pleasure to continue serving the Ward 4 community as your City and Region of Peel Councillor and I would like to share with you some items of interest to our neighbourhoods and hope you will take some time out of your busy day to have a look.

If you have any questions, concerns, or would like additional information about community or city events please feel free to call me at (905) 896-5400.

Infrastructure Stimulus Fund (ISF) dollars flow into Mississauga

Our community has been approved for 132 Infrastructure Stimulus Fund (ISF) projects totaling \$138 million. The Infrastructure Stimulus Fund is a joint investment partnership between the federal, provincial and municipal governments to help fund job-creating infrastructure projects.

Under the ISF program, each level of government contributes one-third of the cost for all approved projects which are required to be completed by March 31st, 2011.

The redevelopment of our City Centre along with the reconstruction of roads, noise attenuation walls, and a storm management facility are some of the projects underway under the ISF program which will benefit our community.

More information on the program and projects around Mississauga can be found at www.mississauga.ca/buildingourfuture.

City Centre undergoing ISF facelift

I hope that you have noticed that our Civic Square and Library Square are currently experiencing one of the most substantial redevelopment initiatives in the City's history. By using funds secured through the previously mentioned Infrastructure Stimulus program this redevelopment will provide numerous employment opportunities during the construction phase which is to be completed by March 2011. As your Ward 4 Councillor, I am pleased to have been a part of this initiative that will result in a 21st century public space that can be utilized and enjoyed for generations to come.



Some key features of the project include:

- doubling the size of the existing ice surface
- preservation of existing green space and creation of new public gardens
- redeveloping the amphitheatre to accommodate 350 people; installation of a permanent shade structure; new open-concept design
- construction of a permanent outdoor stage and sound system for use in major events
- development of a media wall
- creation of a circular spraying water feature
- creation of raised gardens and seating area at Civic Square
- building of a commemorative wall which recognizes Mississauga citizens who have given their life in the service of their community
- extensive renovation to the library foyer
- redesign of City Centre Drive in order to reduce vehicular traffic and link the two existing public squares

When finally completed, these improvements will support a wide range of community groups, activities and events such as Canada Day and New Years Eve and the Rotary Ribfest.

New Sheridan College campus being built in the City Centre

We became one step closer to realizing our goal of transforming and revitalizing the City's downtown core when the ground was broken for the new Sheridan College campus. This world-class campus will be located at the southwest corner of Rathburn Rd. West & Duke of York Blvd and is slated to open in 2011. When completed, the campus will house 1,760 new business students and over 7,500 continuing education students.

The City Centre is the ideal location for a college or university and I look forward to Sheridan College participating in new and innovative plans to inspire and connect youth to our City, and help our businesses and economy grow.

When completed in 2011, the Sheridan campus will require over 310 full time employees in addition to the hundreds of construction jobs that will also have been created over the next two years.



3.4 acre park to be built in the City Centre

I am pleased to inform you that construction has begun on the 3.4 acre piece of land in the City's downtown core known as Community Common Park, which will be open to residents in 2010. Located immediately west of the Living Arts Centre, the impressive new space will contain a central social plaza with benches and movable bistro chairs, a water wall feature, a uniquely designed washroom pavilion and numerous open areas of green space incorporating shade trees for a wide range of uses.

I have worked hard with staff at the city to ensure that this park was designed in order to preserve green space in our City Centre. My goal has been to help provide a park in our downtown that offers something for almost everyone and I am pleased that this park will achieve that aim.



Future secure for Madill Common Park

Residents will be pleased to learn that the temporary park known as Madill Common has now officially been made a permanent park. After remaining on the City books for years as only a temporary park, Madill Common's future is now secure as a result of its new designation.

Construction of the park will begin in the spring 2010 with completion scheduled for later in the year. I am pleased to announce that the planned improvements to the new 4.2 acre green-space include a new playground, soccer field, asphalt pathways, a spray pad, new trees and a 21-car parking area. As we continue to look for ways to preserve our City's green space, the move to designate Madill Common as a permanent park help to meet that goal and is certainly a benefit to area residents and the community.

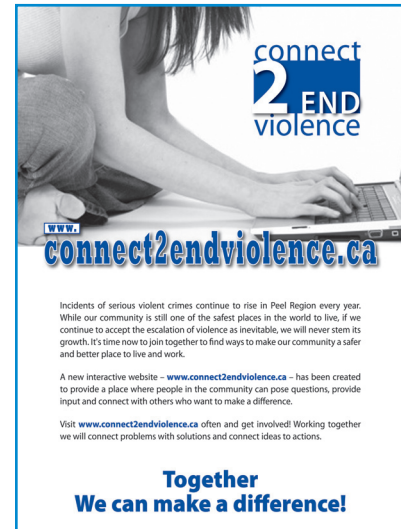
Protecting our environment – Idling Control By-law

On June 24th the City passed its first Idling Control by-law which it began enforcing in October. The new by-law prohibits vehicles from idling for more than three minutes within the City. This measure is a step towards making Mississauga an even more eco-friendly community and will help reduce our carbon footprint.



The **connect2ENDviolence** initiative was implemented by the Peel Regional Police Service Board (PSB), in collaboration with the Peel Regional Police, as part of the five-point plan introduced by the PSB to address the increase in serious crime within the Region of Peel. The connect2endviolence website is an interactive website, and provides a forum for the community to voice their concerns, obtain access to information concerning bullying, child abuse, community safety and security, and connect problems with solutions and ideas to action.

Visit www.connect2endviolence.ca often and get involved! Working together we will connect problems with solutions and connect ideas to actions.



- **INFORMATION** – on violence and violence prevention
- **HELP** – for victims of violence
- **SHARE** – your opinion through blogs, surveys and polls
- **EVENTS** – relating to violence prevention in Peel
- **VIDEOS** - by Premier Dalton McGuinty, Keshia Chante, Donovan Bailey, Mike Bullard and others

Confederation Bridge helps to link our community

I sincerely appreciate the many positive comments that I have received since the opening of the Confederation Bridge over Highway 403. I worked tirelessly to ensure that this bridge was also designed with pedestrians and cyclists in mind. If you travel across the bridge you will notice the dedicated lanes for cyclists and protected multi-use walkways with independent pedestrian lighting. As a result we have created a convenient means to access the City Centre, linked our neighbourhoods and provided residents with the opportunity to utilize eco-friendly transportation options.



Curbside Christmas tree Collection

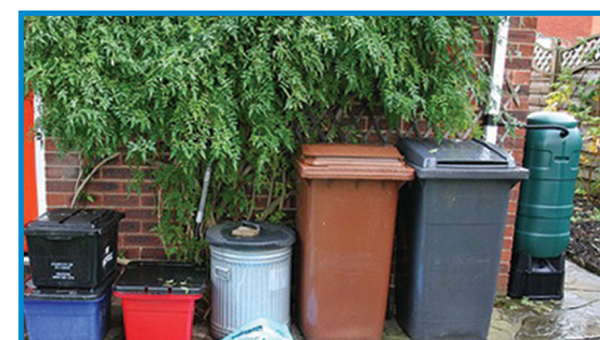
Christmas tree collection will take place on your scheduled garbage collection day during the week of Jan. 12, 2009. Trees must have all tinsel, ornaments, plastic bags and stands removed. Trees buried in a snow bank will not be removed.



Alternatively, Residents may drop off their Christmas trees at any of the Region of Peel's four Community Recycling Centres. A minimum \$2 drop off fee will apply.

Christmas and New Year's Waste Collection

There will be no changes to waste collection services over the Christmas and New Year's holidays. Garbage and recycling (blue box and green bin) will be collected on regular collection days. Residents may however place



unlimited quantities of acceptable waste at the curb on your scheduled collection day (December 30th, 2009 & January 6th, 2010).

