

1 Introduction

1.1 Background

Mississauga is at a decisive moment in its history – most of its greenfield lands have been developed and much of its infrastructure is in place. New growth will take place primarily through infilling and redevelopment in appropriate areas, which can benefit from growth and change, such as the Hurlingham Street corridor. Many areas, such as existing stable residential Neighbourhoods, will experience little change in the future.

Mississauga Official Plan provides a new policy framework to protect, enhance, restore and expand the Natural Areas System, to direct growth to where it will benefit the urban form, support a strong public transportation system, protect, enhance, restore and expand the Natural Areas System and address the long term sustainability of the city. Mississauga Official Plan will be an important instrument in city building. All change within the urban environment will be considered for its capacity to create successful places where people, businesses and the natural environment will collectively thrive.



Figure 1-1: Formed in 1974, Mississauga is recognized as Canada's sixth largest city and Ontario's third largest city, with a population of over 730,000 residents representing cultures from around the world. Mississauga has many attractions and events that run at various times throughout the year. The Downtown is a central spot for activities, including the Farmers' Market.

The City is required to review the Official Plan on a regular basis, as directed by the *Planning Act*. The Official Plan Review process was initiated to establish policies that will guide Mississauga through its next stage of growth and to align with the legislative and policy initiatives set out by the Province of Ontario and the Region of Peel.

In recent years, there has been a shift particularly at the Provincial level towards the promotion of development that is sustainable, supportive of public transit and oriented towards pedestrian-based communities. The vision and planning direction that the City of Mississauga supports is consistent with recent Provincial policy initiatives.

The City will fulfill the Federal government requirements of an Integrated Community Sustainability Plan through its different municipal plans and policies, including Mississauga Official Plan.

1.1.1 Mississauga Strategic Plan

On April 22, 2009, following the comprehensive public engagement process “Our Future Mississauga – Be part of the conversation”, which connected with over 100,000 people, City Council approved a new Strategic Plan comprised of a Vision Statement and five Strategic Pillars for Change. Within the Strategic Plan, each Strategic Pillar for Change is connected with specific action items that will propel the Strategic Plan forward. These key action items are outlined in the Strategic Plan’s Action Plan – a complementary document that includes key indicators, targets, actions and funding options for each Strategic Pillar for Change.

The Strategic Plan provides a long term vision to guide Mississauga as it embarks upon the next

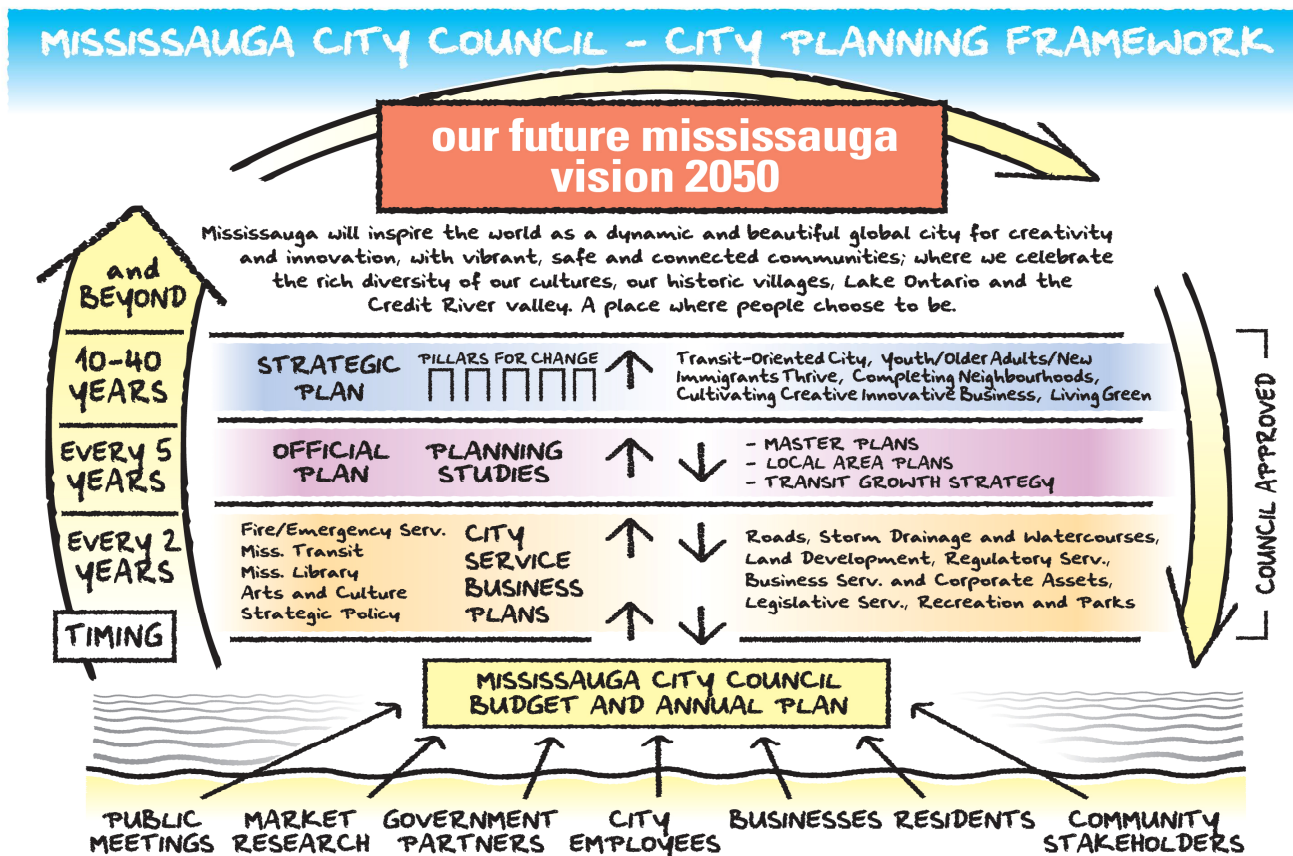


Figure 1-2: Mississauga’s planning framework is based on collaboration between the public, City Council and professional staff. Together, documents which express Mississauga’s vision and guide growth and development are created, implemented, reviewed and amended when necessary.

stage of its development. The City's first Strategic Plan was written to provide direction during a period of rapid greenfield development. Mississauga's history to date has been shaped by a pattern of suburban growth, strong service delivery, and prudent fiscal management. The city has grown from a collection of cherished villages to Ontario's third largest city, and the sixth largest in Canada. Mississauga is now entering a new stage in its evolution – one of intensification and urbanization. New challenges have arisen as Mississauga has grown and the Strategic Plan was updated to guide the city through the next phase of growth.

The Vision Statement articulated in the Strategic Plan depicts what the city will resemble in 40 years: "Mississauga will inspire the world as a dynamic and beautiful global city for creativity and innovation, with vibrant, safe, and connected communities; where we celebrate the rich diversity of our cultures, our historic villages, Lake Ontario, and the Credit River Valley. A place where people choose to be."

The Strategic Plan has identified five Strategic Pillars for Change, intended to provide guidance towards the creation of a city for the 21st century. Each Strategic Pillar for Change has its own unique direction statement and principle, along with specific strategic goals to ensure that the vision is achieved. They are described below.



Developing a Transit Oriented City

Direction: Our Future Mississauga is a city where people can get around without a vehicle, and where transit will directly influence and shape the form of the city. Transit will be a desirable choice that connects people to destinations, and will underpin an environmentally responsible, inclusive, vibrant and successful city.

Principle: Mississauga is a city that values clean air and healthy lifestyles through the promotion of transit as a preferred, affordable, and accessible choice.

Strategic Goals:

- Develop Environmental Responsibility
- Connect our City
- Build a Reliable and Convenient System
- Increase Transportation Capacity
- Direct Growth



Ensuring Youth, Older Adults and New Immigrants Thrive

Direction: Our Future Mississauga is a city where people can spend their entire lives – where teenagers want to be, where young professionals choose to locate, where immigrants are welcomed and their cultures become a visible part of the city's fabric; and where people can age in place gracefully.

Principle: Mississauga is a city that thrives on its social and cultural diversity.

Strategic Goals:

- Ensure Affordability and Accessibility
- Support Aging in Place
- Attract and Retain Youth
- Attract Post-Secondary Institutions
- Nurture Diverse Cultures
- Integrate Places of Religious Assembly



Completing Our Neighbourhoods

Direction: Our Future Mississauga is a beautiful, sustainable city with safe neighbourhoods that support a strong, connected and vibrant community – a place where all can live, work and prosper. People can play as a child, walk to meet a friend, fall in love, raise a family and grow old.

Principle: Mississauga is a city that nurtures a unique quality of life within each neighbourhood, where residents value the beauty and variety of the natural environment, engage in **active transportation**, and support a rich, healthy, and prosperous social and cultural mosaic through all stages of the life cycle.

Strategic Goals:

- Develop Walkable, Connected Neighbourhoods
- Build Vibrant Communities
- Create Great Public Spaces
- Celebrate our Community
- Provide Mobility Choices
- Build and Maintain Infrastructure
- Nurture “Villages”
- Maintain a Safe City
- Create a Vibrant Downtown



Cultivating Creative and Innovative Businesses

Direction: Our Future Mississauga is a global hub of creative and innovative activity where talent and business thrive.

Principle: Mississauga is a city that values a strong global business future, fostering a prosperous and sustainable economy that attracts and grows talent.

Strategic Goals:

- Develop Talent
- Attract Innovative Business
- Meet Employment Needs
- Strengthen Arts and Culture
- Create Partnerships for Innovation



Living Green

Direction: Our Future Mississauga is a city that co-exists in harmony with its ecosystems, where natural areas are enhanced, forests and valleys are protected, the waterfront connects people to Lake Ontario, and communities are nurtured so that future generations enjoy a clean, healthy lifestyle.

Principle: Mississauga is a city that values its shared responsibility to leave a legacy of a clean and healthy natural environment.

Strategic Goals:

- Lead and Encourage Environmentally Responsible Approaches
- Conserve, Enhance and Connect Natural Environments
- Promote a Green Culture

The City of Mississauga will use the Strategic Plan to define the city’s priorities, processes and short and long term plans as well as prioritize budget and resource allocations.

Mississauga Official Plan is the document for implementing the actions identified in the Strategic Plan with respect to land development.

1.1.2 Mississauga Official Plan: Purpose

Mississauga Official Plan provides direction for the next stage of the city's growth and articulates a vision for a future Mississauga through specific guidance for both the public and private sectors in the ongoing evolution of the city. Mississauga Official Plan provides planning policies to guide the city's development to the year 2031, as required by Provincial legislation.

Mississauga Official Plan provides policies to manage and direct the physical change of the city and the effects of such change on the social, economic, cultural and natural environment. It also forms the basis for detailed land use designations and urban design policies, and sets the context for the review and approval of development applications.

1.1.3 Mississauga Official Plan: Organization and Structure

Mississauga Official Plan is organized as follows:

Part 1 – Introduction, Policy Context and Promote Collaboration

This section identifies relevant background policies, primarily through a review of the Provincial, Regional and City policy context that have provided general direction for the Mississauga Official Plan. It also includes policies to promote collaboration in the planning process.

Part 2 – City Wide Policies

The city wide policy framework for Mississauga Official Plan is contained in this section. A vision for the future of the city is articulated and key policy directions are established.

Part 3 – Land Use Designations

The directions in Part 2 are implemented in this section. It presents the city structure and identifies Character Areas. Where applicable, Special Site

Policies for each Character Area describe the unique condition and identity of different areas within the city. Special Site Policies also describe exceptions in the policy framework and the policies that apply to these sites.

Part 4 – Implementation and Glossary

This section sets out implementation related policies, strategies, regulations, and monitoring mechanisms to achieve the vision. The Glossary defines terms used throughout Mississauga Official Plan.

Schedules

Schedules form part of this Plan and must be read in conjunction with Parts 2 and 3 of this Plan.

Appendices

Appendices are provided for information and are not part of this Plan.

Local Area Plans

Local Area Plans are also part of Mississauga Official Plan, but under separate cover. Local area plans address unique circumstances particular to a specific area and must be read in conjunction with Parts 1 to 4 and the schedules of this document.

1.1.4 How to Read Mississauga Official Plan

To understand the planning rationale and policy objectives of Mississauga Official Plan, also referred to as "Official Plan", "the Plan" or "this Plan", it should be read in its entirety and all relevant text, tables, and schedules are to be applied to each situation.

The vision articulated in Mississauga Official Plan is contingent on an understanding of the city as a complex, urban place where sometimes conflicting considerations must be effectively balanced so that the city can move forward with planning approaches that align with larger city building objectives.

Mississauga Official Plan replaces the 2003 Mississauga Plan. The following provides guidance for the interpretation of this document:

a. Mississauga Official Plan document includes text, tables, schedules, figures and associated captions, and appendices. The text, tables, maps and schedules are the policies of Mississauga Official Plan and must be read together. The figures and associated captions and the appendices have been included for information and illustration purposes only and are not policy. The text, tables, maps and schedules will be amended through an official plan amendment. Figures and associated captions and appendices will be adopted and amended by by-law.

b. The location of boundaries and symbols, including land use designations, are approximate and they are not intended to define the exact locations except where they coincide with major roads, railways, transmission lines, major **watercourses**, or other bodies of water, and other clearly recognizable physical features. Future roads and public transit systems are shown in approximate locations only. Numbers are approximations, except designated rights-of-way widths.

c. Mississauga may undertake or require a number of studies to address planning matters including the following:

- a municipal comprehensive review is an official plan review or an official plan amendment, initiated by the City, that has city wide policy implications. This includes, among other matters, changes to the urban structure or conversion of employment lands;
- a local area review of a Character Area, Corridor or **Major Transit Station Area** is typically undertaken by or on behalf of the City and will be incorporated into this Plan by amendment;

- a development master plan is prepared by a development proponent at the direction of the City and to the City's satisfaction to assist with the evaluation of development applications until such time as a local area review has been completed; and

- planning studies may address a variety of Official Plan policies including matters relating to land use, transportation, environment, or urban design that are limited in scope or geography. These reviews are typically undertaken by or on behalf of the City and may or may not result in an amendment to this Plan.

d. Interpretation of the intent of Mississauga Official Plan, or any part thereof, will be made by City Council on the advice of staff. Where terms such as "acceptable" or "appropriate" are used, the determination of compliance will be made by City Council on the advice of staff.

e. Where there is a conflict between the policies relating to the natural and cultural heritage and the rest of this Plan, the direction that provides more protection to the natural and cultural heritage will prevail.

f. There are sites within Character Areas that merit special attention. While special sites are areas with unique circumstances, they complement and support the long-term vision of the Plan. As such, they are to be read in conjunction with the general land use policies and all other applicable policies of the Plan. Unless otherwise stated, the lands may be developed in accordance with their land use designation and/or the uses permitted by the special site. It is intended that special sites will be reviewed during the preparation of local area plans or other planning studies.

g. There are sites in Mississauga identified in Part 3 as "exempt". Exempt sites reflect unique circumstances that are not representative of the vision, direction and planning policies of the Plan, but nonetheless are recognized because

- they contain established land uses. Mississauga Official Plan will not be interpreted to prevent the use of any land or building on these sites for a purpose that is contrary to the Plan, if such uses or buildings lawfully existed on the date of the approval of the Plan. Generally such uses will be encouraged to relocate to lands appropriately designated. "Exempt sites" will be reviewed during the preparation of local area plans or other planning studies. It is intended that these lands will eventually be redeveloped in accordance with the underlying designation. In the interim, lands zoned to permit such uses or buildings are deemed to be in conformity with the provisions of the Plan. The lands may be developed in accordance with their land use designation and/or the uses permitted by the individual exempt site.
- h. Provided that the purpose, effect, intent, meaning, and substance are in no way affected, the following technical revisions to the Plan are permitted without an official plan amendment:
- changing the numbering, cross-referencing, and arrangement of the text, tables, maps and schedules, figures and associated captions, or appendices;
 - revising base map information;
 - altering punctuation or language for consistency; and
 - correcting grammatical, dimensional and boundary, mathematical or typographical errors.
- i. The indication of any proposed services or infrastructure, roads, or parks in text or on maps, schedules, figures or appendices is not a commitment by City Council to provide such services within a given time period unless otherwise stated in the Plan and is subject to budgetary and other applicable approvals.
- j. Italicized terms throughout the text do not appear in the Glossary. These correspond to specific documents and policies when identified by their title (e.g., *Planning Act*).
- k. Singular terms include the plural and plural terms include the singular.
- l. "Airport" means the Toronto – Lester B. Pearson International Airport.
- m. "Character" means the aggregate of the features including the attributes of the physical, natural and social dimensions of a particular area or neighbourhood.
- n. "City", when capitalized, means The Corporation of the City of Mississauga.
- o. "city", when not capitalized, means the geographic area of the City of Mississauga.
- p. "community infrastructure" means lands, buildings, and structures that support the quality of life for people and communities by providing public schools, private schools, emergency services, private clubs, **community facilities**, daycare/day program and places of religious assembly. Private club means a social, cultural, athletic or recreational club or fraternal organization that is not operated for profit.
- q. "compatible" means development, which may not necessarily be the same as, or similar to, the existing or desired development, but nonetheless enhances an established community and co-exists with existing development without unacceptable adverse impact on the surrounding area.
- r. "conform to" means to comply with or be in agreement with a policy or requirement of the Plan.
- s. "conserve" means the identification, protection, use and/or management of cultural, heritage and archaeological resources in such a way that their heritage values, attributes, and integrity are retained. This may be addressed

- through a conservation plan or heritage impact assessment.
- t. “consistent with” means to be in agreement or not in conflict with a policy or requirement of the Plan.
 - u. “current” means most recently approved practices and standards or policies that are in effect.
 - v. “discourage” means not permitted unless it can be demonstrated that compliance with the policy is not possible.
 - w. “density” means the intensity of use permitted on a property or the concentration of jobs or people within a defined area. When referring to development, density means the floor space of a building(s) or number of units in relation to a given area of land.
 - x. “Downtown” corresponds to the “Urban Growth Centre” as defined in the Growth Plan for the Greater Golden Horseshoe 2006 and refers to the city structure element.
 - y. “encourage” means to carefully consider or take into account.
 - z. “enhance” means to complement and assist in furthering the aesthetic and intrinsic value of a neighbourhood, site, or structure. As applied to the environmental policies of the Plan, enhance means intensifying components of a natural area through management measures to increase stability, **biodiversity**, and long term viability.
 - aa. “existing” includes built and approved development at the time this Plan is adopted by City Council.
 - bb. “may” means a discretionary, but not a mandatory policy or requirement of the Plan.
 - cc. “Neighbourhood”, when capitalized, refers to the city structure element.
 - dd. “neighbourhood”, when not capitalized, refers to an undefined geographic area containing primarily residential dwellings.
 - ee. “pedestrian” means a person who travels by foot or with a mobility assisted device, e.g. a wheelchair, and matters pertaining to pedestrian movement including universal accessibility.
 - ff. “preserve” when referring to Natural Areas, means maintaining a natural area by protecting the stability, **biodiversity** and long-term viability of its components. When referring to heritage resources, preservation includes both short-term and interim measures to protect or stabilize the area or feature, as well as long-term actions to retard deterioration or prevent damage so that the area or feature can be kept serviceable through routine maintenance and minimal repair, rather than extensive replacement and new construction.
 - gg. “Region”, when capitalized, means the Region of Peel.
 - hh. “region”, when not capitalized, refers to the geographic area of the Region of Peel and surrounding area.
 - ii. “restore” means developing components of a natural area through the re-creation or reinstatement of conditions previously associated with stability, **biodiversity**, and long-term viability.
 - jj. “should” means to carefully consider or take into account.
 - kk. “sustainable” means development that meets the needs of the present without compromising the ability of future generations to meet their own needs.
 - ll. “will” denotes a mandatory requirement of the Plan. This should not be interpreted as City Council’s commitment to proceed with all undertakings immediately. These will generally

occur in a phased manner, conditional upon program availability and budgeting.

mm. The meaning of terms that are not defined in the Glossary, included in Appendix A: Terms Defined in the Provincial Policy Statement 2005 and the Growth Plan for the Greater Golden Horseshoe 2006 or defined in this section, will be as defined in the Canadian Oxford Dictionary, 2nd edition.

nn. Italicized and bolded terms throughout the text are defined in the Glossary. The definition of the following terms are as defined in the Provincial Policy Statement or the Growth Plan for the Greater Golden Horseshoe:

- Affordable
- Areas of natural and scientific interest (ANSI)
- Built-up area
- Built boundary
- Complete communities
- Cultural heritage landscape
- Designated greenfield area
- Development
- Dynamic beach hazard
- Ecological function
- Endangered species
- Erosion hazard
- Fish habitat
- Flood fringe
- Flooding hazard
- Flood plain
- Floodproofing standard
- Floodway
- Ground water feature
- Intensification

- Major office
- Modal share
- Multi-modal
- One hundred year flood
- Redevelopment
- Regional market area
- Sensitive land uses
- Significant areas of natural and scientific interest
- Significant coastal wetlands
- Significant habitat of endangered species and threatened species
- Significant valleylands
- Significant wetland
- Significant wildlife habitat
- Significant woodlands
- Site alteration
- Special needs
- Special policy area
- Threatened species
- Transportation corridor
- Transportation Demand Management
- Valleylands
- Watershed
- Wetlands
- Wildlife habitat
- Woodlands

See Appendix A: Terms Defined in the Provincial Policy Statement and the Growth Plan for the Greater Golden Horseshoe.

oo. Metric measurements are used in this Plan. Appendix B: Metric Conversion Standards may be used to convert to imperial measurements.

Steps to determine the designation and use of a property:

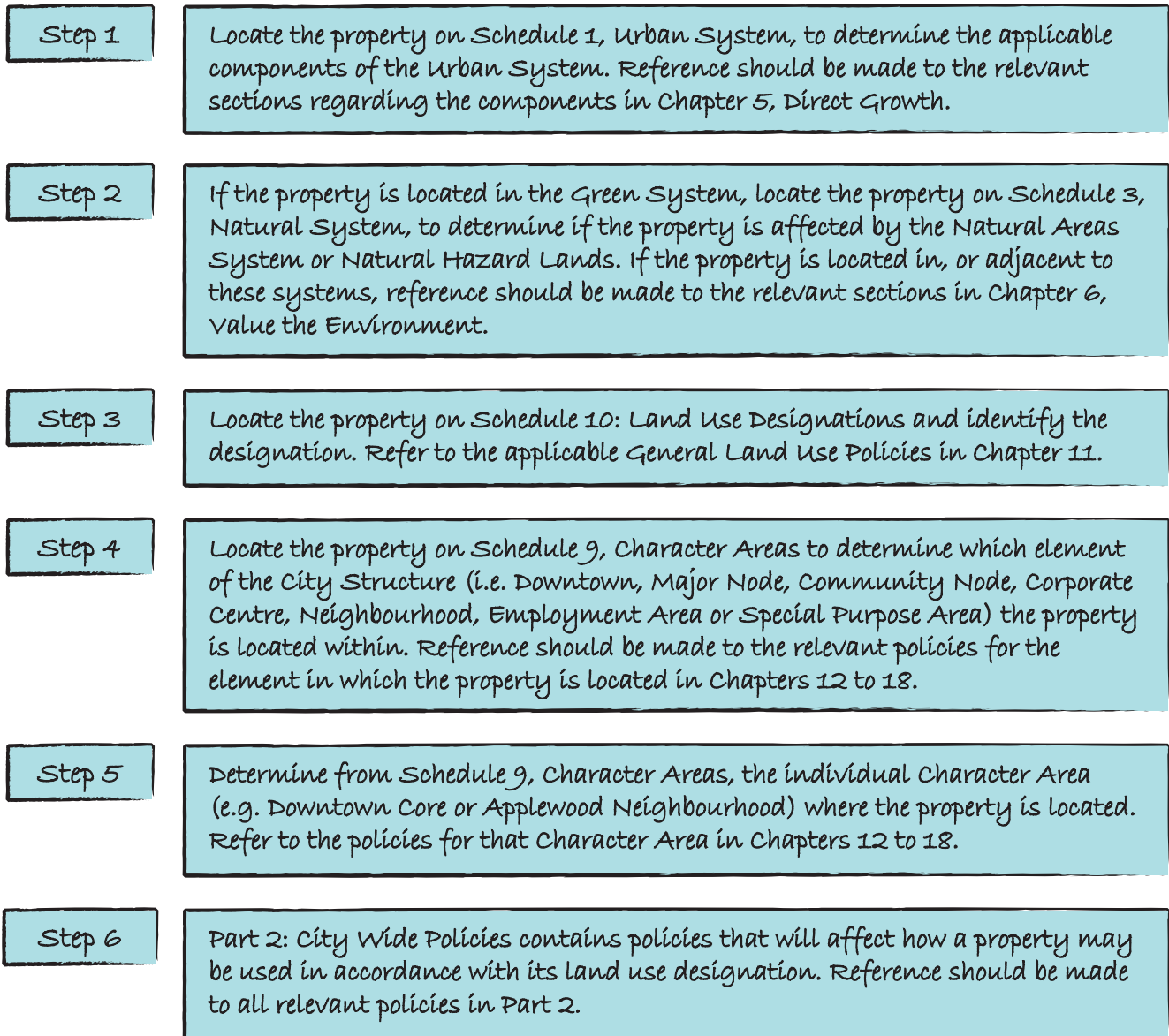


Figure 1-3: Steps to determine the designations and use of property