

PORT CREDIT MEMORIAL ARENA

City of Mississauga



March 24, 2009 – Heritage Committee



The Team & Schedule

Team

- City of Mississauga owned/operated facility
- ZAS Architects
- John George Landscape Architect
- Halsall Structural Engineers
- Jain and Associates Mechanical and Electrical Engineering

Schedule

- Memorial Park Official Opening Summer 2007
- Feasibility study completed in 2006
- Building design 2009
- Construction to commence in April 2009
- Occupancy date January 2011

Site Context



View of Arena from Stavebank Road



Site Context



View of the Arena from the Park



Site Context



Skateboarding Park



Site Context



**View of the Credit River
(The Don Rowing Club Boathouse across the River)**



Site Context



Pavilion in the Park



Site Context



Port Credit Library



Site Context



Children's Park



Site Context



St Andrew's Memorial Presbyterian Church



Site Context



Trinity Anglican Church



The Site

Arena relationship to the park:

- Overlooks the Port Credit Memorial Park and the Credit River
- Physical and Visual Link to it's Surroundings
- Integrated connection with the Park which exhibits numerous Heritage Displays
- Parking Lot is Part of the Waterfront Trail Bicycle System
- Staging Area & support spaces for the Jazz Festival and the Waterfront Festival
- Parking lot used for park access including Labatt stage

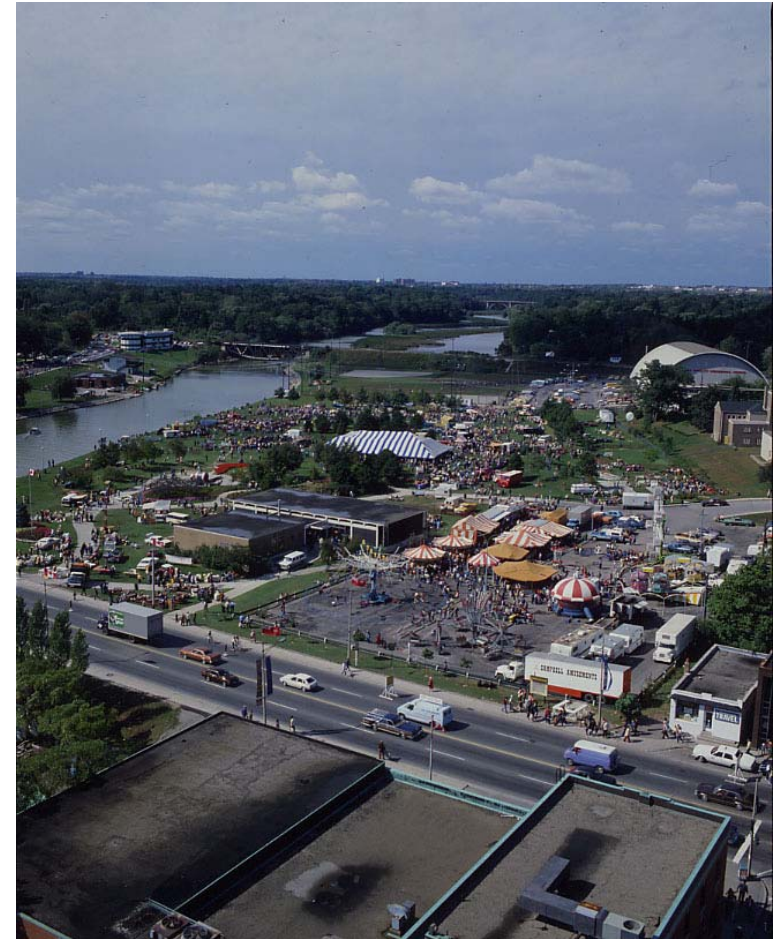


Aerial View from the South

The Site

Arena relationship to the park:

- Overlooks the Port Credit Memorial Park and the Credit River
- Physical and Visual Link to it's Surroundings
- Integrated connection with the Park which exhibits numerous Heritage Displays
- Parking Lot is Part of the Waterfront Trail Bicycle System
- Staging Area & support spaces for the Jazz Festival and the Waterfront Festival
- Parking lot used for park access including Labatt stage

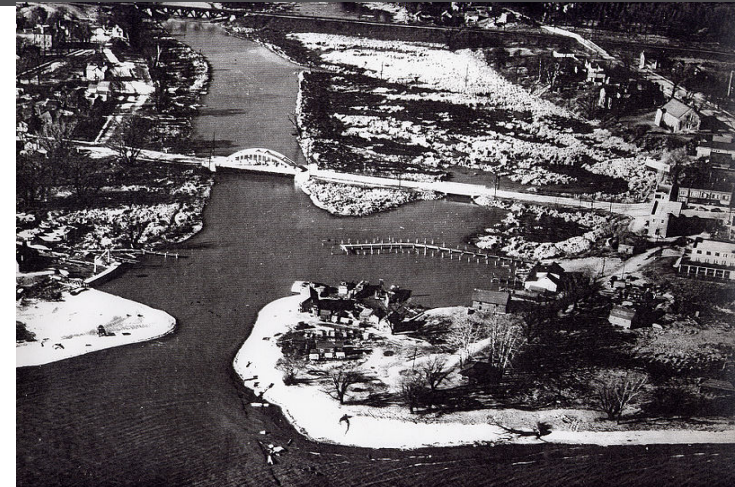


Summer Festival in the Park

The Site

Challenges of the Site:

- Landfill site (response to Hurricane Hazel)
- Steep site grades – upper and lower levels (public Access)
- Zamboni access
- Large existing park facing trees



Before the Arena

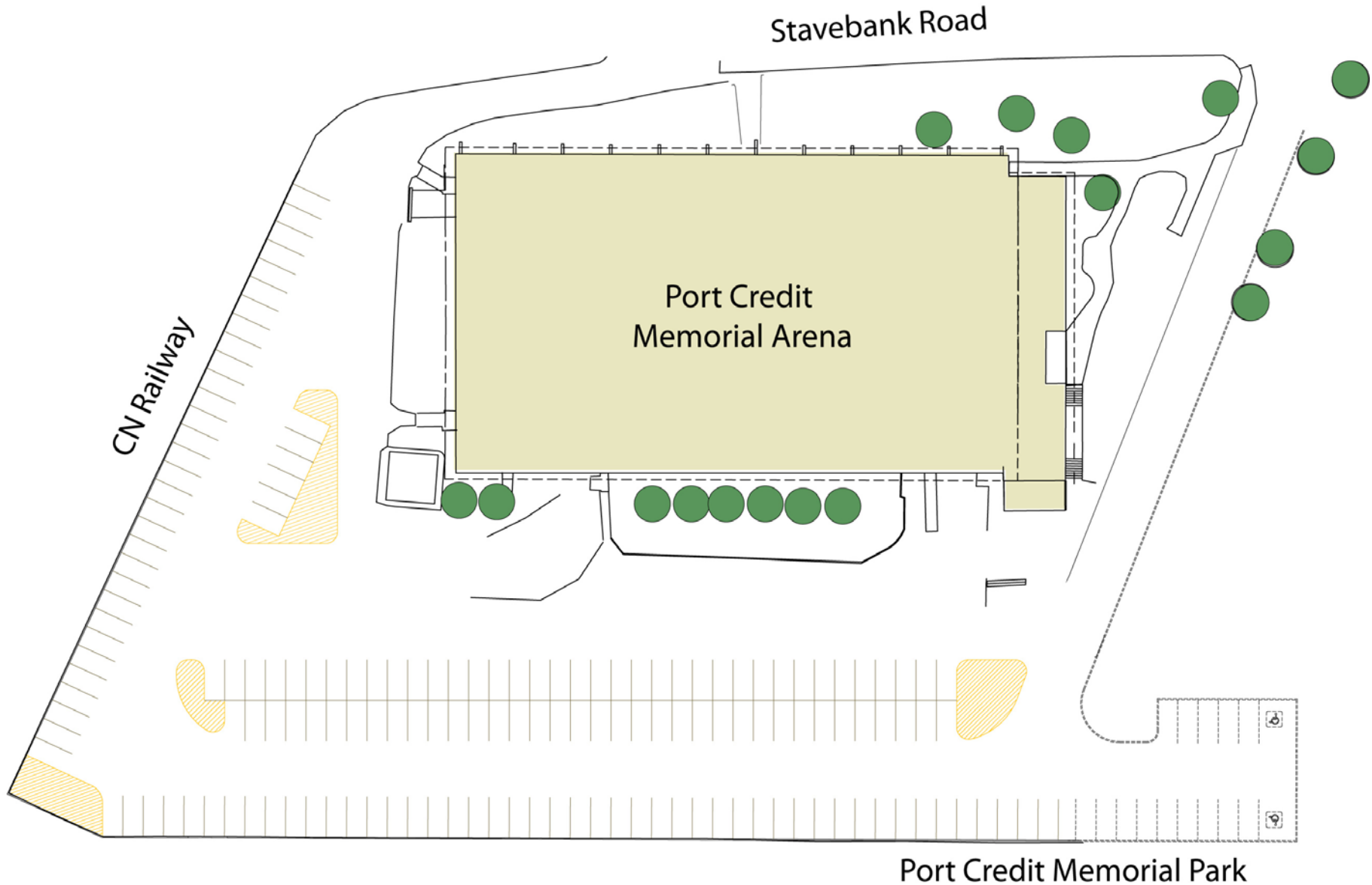


Zamboni Access

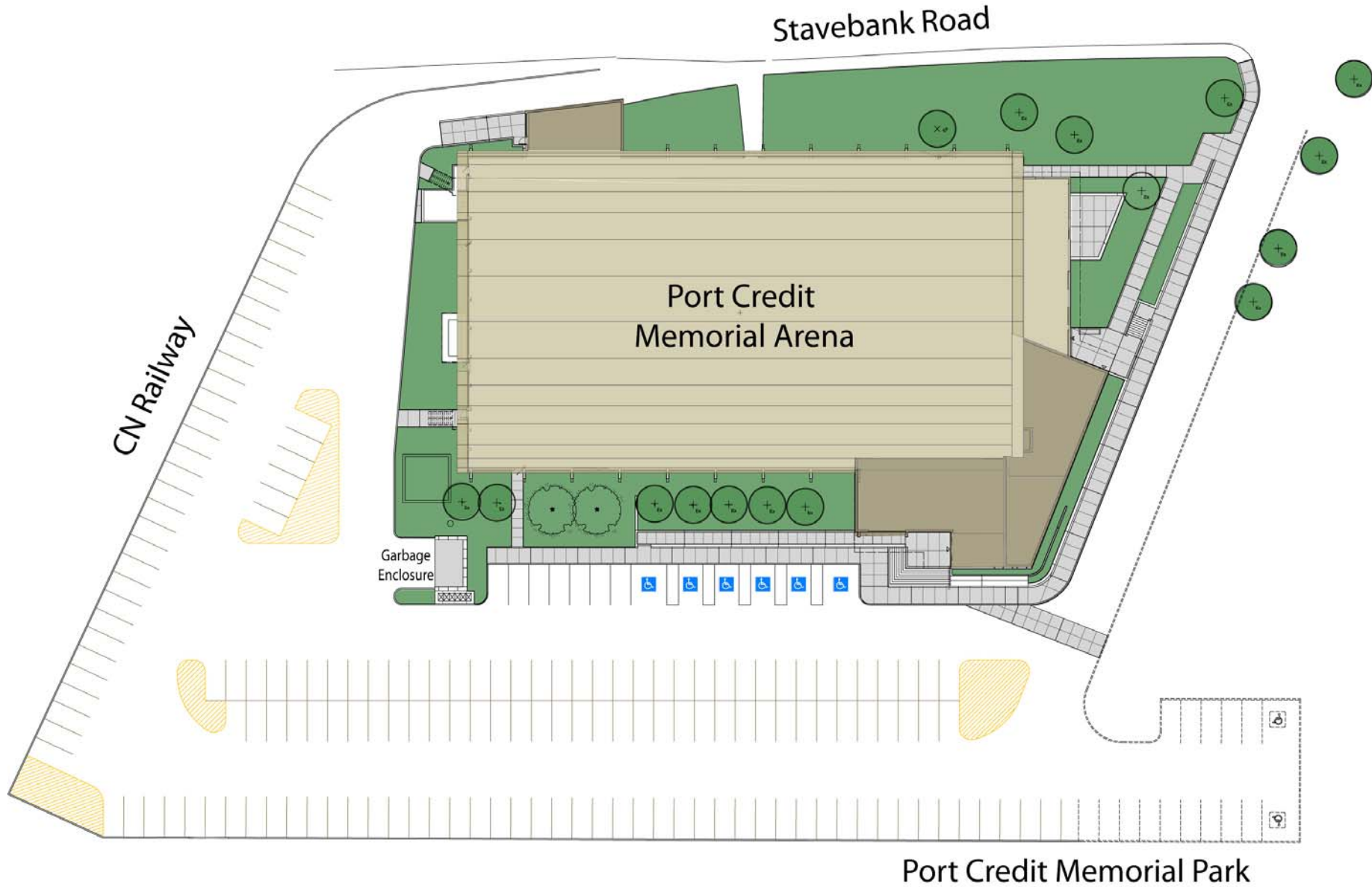


Steep Grades

The Existing Site



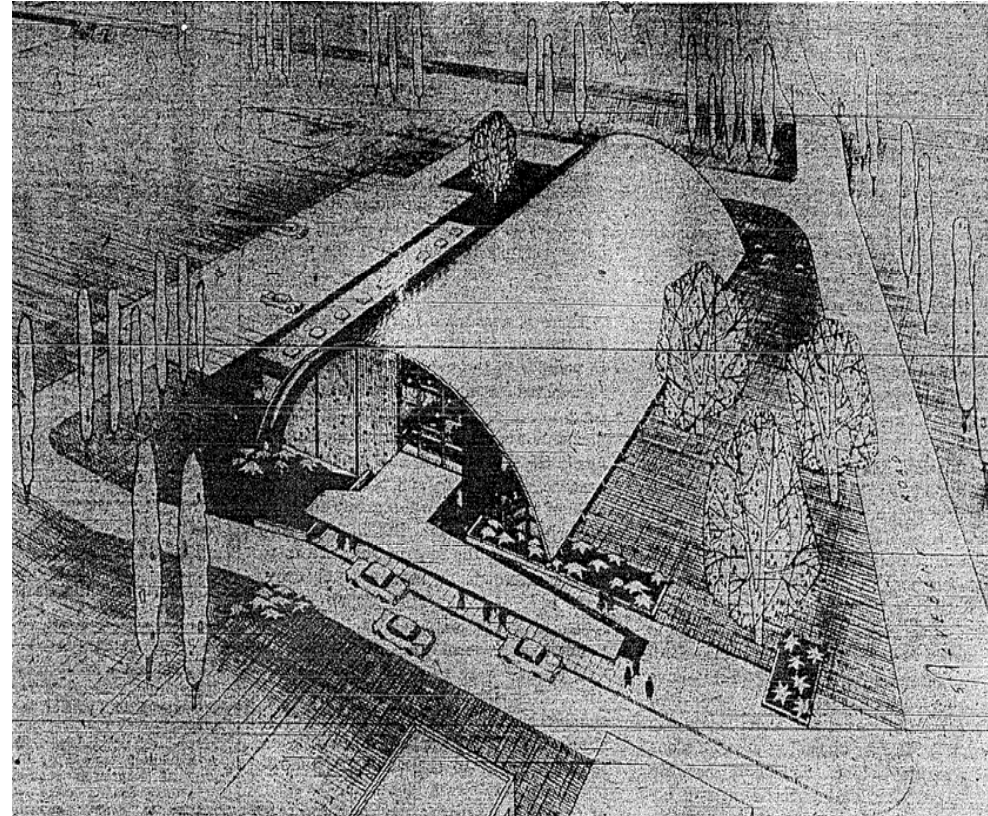
The Concept Site



The Building

Overview:

- Built in 1959 by Canadian Architect, Robert C. Fairfield
- First Public Arena in Mississauga
- Publically funded
- Mississauga Landmark - In the process of being Designated under the Ontario Heritage Act.
- 1950's post industrial style
- Simple and functional design
- 2 storeys – 50,000 sqft – single ice pad
- Hockey, figure skating, lacrosse and venue for many public events throughout the year



Original Rendering of the Arena

Link to it's Surroundings



St. Mary's Separate School, 44 Port Street West (1953)



Port Credit Library, 20 Lakeshore Road East (1967)



Secondary School, 70 Mineola Road East (1964)



Royal Canadian Legion, 35 Front Street North (1966)

Link to it's Surroundings



55 Park Street East Apartments



Texaco, 411 Lakeshore Road East, (1953)



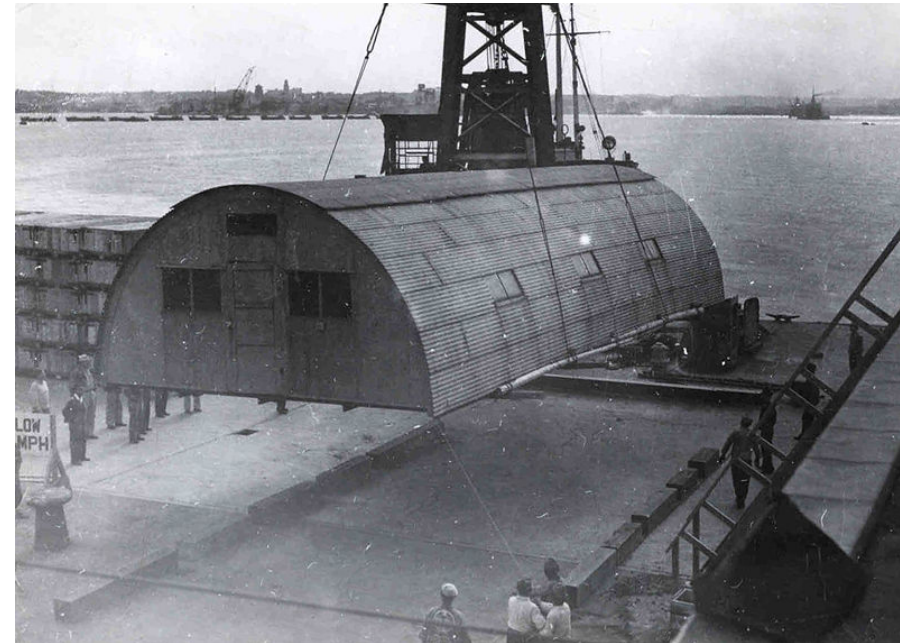
Century Park Apartments



Apartment Building

Exterior Heritage Elements

- **1950s Post Industrial / Contemporary Architecture – Quonset / Barrel style**
- Barrel vaulted structure made of laminated douglas fir wooden arches and large concrete piers
- Simple and Functional
- Textured roofing material
- Scalloped Soffit / Canopy
- Signage



Quonset Barrel Style

Exterior Heritage Elements

- 1950s Post Industrial / Contemporary Architecture – Quonset / Barrel style
- **Barrel vaulted structure made of laminated fir wooden arches and large concrete piers**
- Simple and Functional
- Textured roofing material
- Scalloped Soffit / Canopy
- Signage



Exterior Heritage Elements

- 1950s Post Industrial / Contemporary Architecture – Quonset / Barrel style
- Barrel vaulted structure made of laminated fir wooden arches and large concrete piers
- **Simple and Functional**
- Textured roofing material
- Scalloped Soffit / Canopy
- Signage



Exterior Heritage Elements

- 1950s Post Industrial / Contemporary Architecture – Quonset / Barrel style
- Barrel vaulted structure made of laminated fir wooden arches and large concrete piers
- Simple and Functional
- **Textured roofing material**
- Scalloped Soffit / Canopy
- Signage



Exterior Heritage Elements

- 1950s Post Industrial / Contemporary Architecture – Quonset / Barrel style
- Barrel vaulted structure made of laminated fir wooden arches and large concrete piers
- Simple and Functional
- Textured roofing material
- **Scalloped Soffit / Canopy**
- Signage

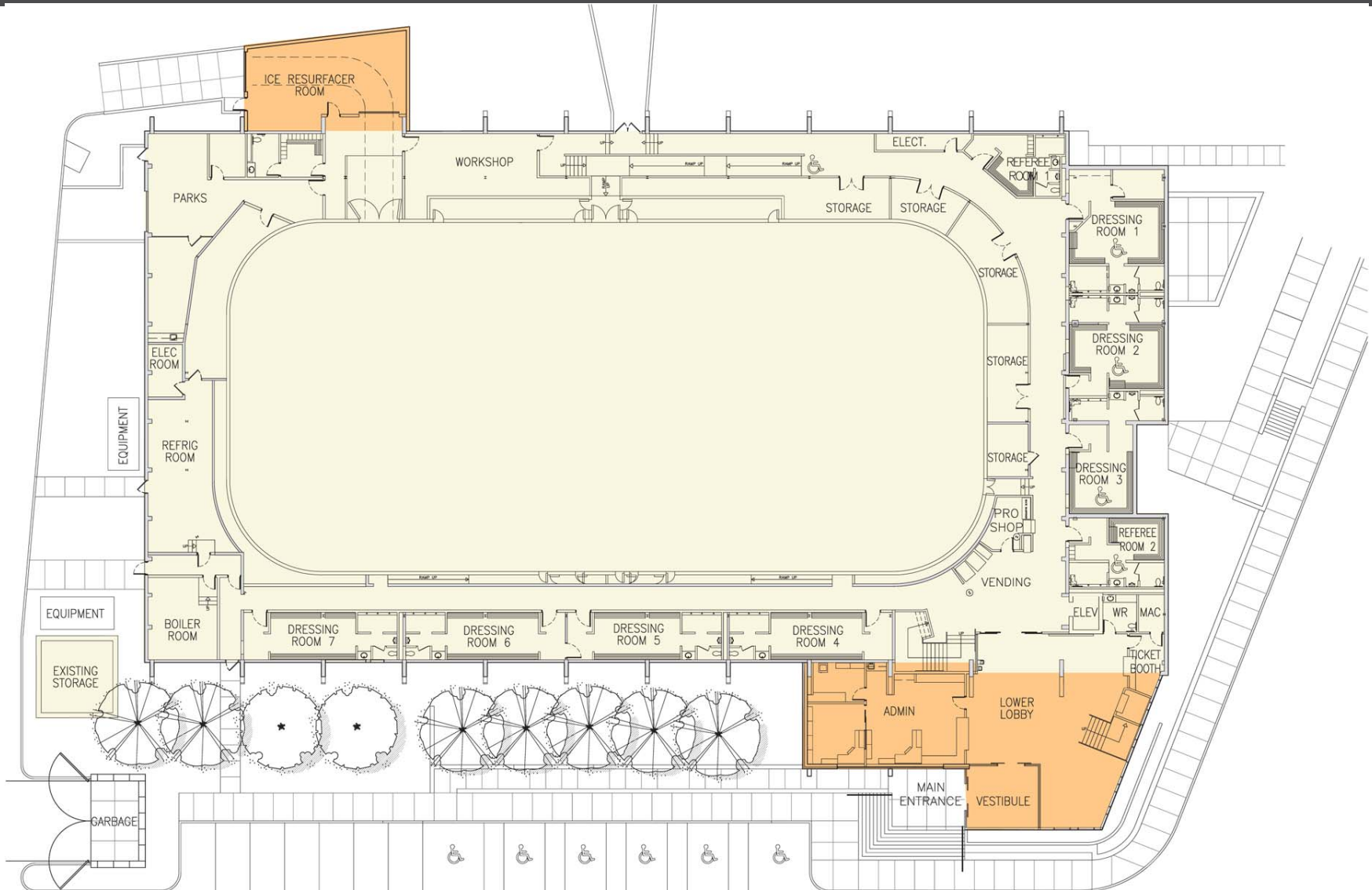


Exterior Heritage Elements

- 1950s Post Industrial / Contemporary Architecture – Quonset / Barrel style
- Barrel vaulted structure made of laminated fir wooden arches and large concrete piers
- Simple and Functional
- Textured roofing material
- Scalloped Soffit / Canopy
- **Signage**

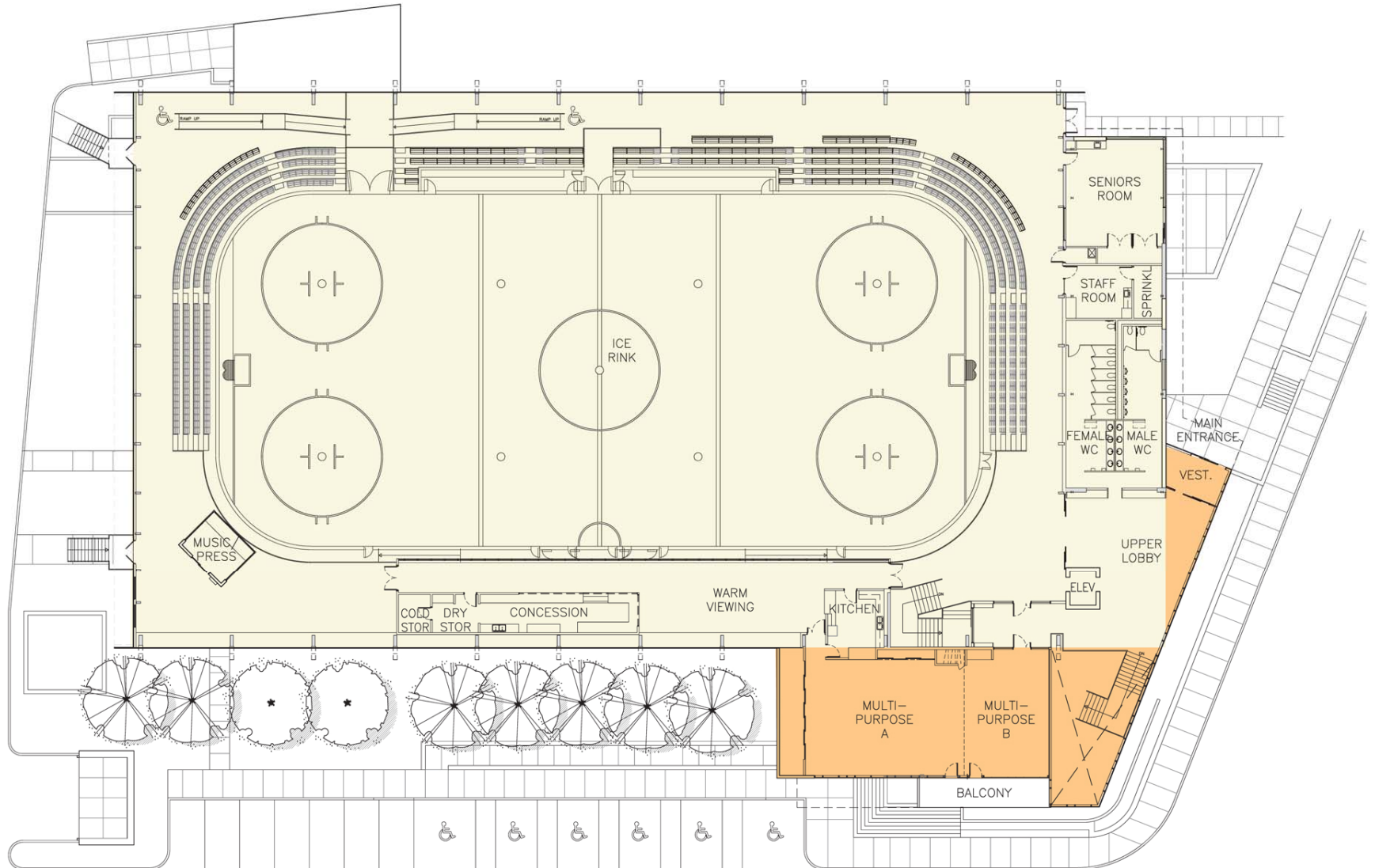


Floor Plans



Lower Level Floor Plan

Floor Plans



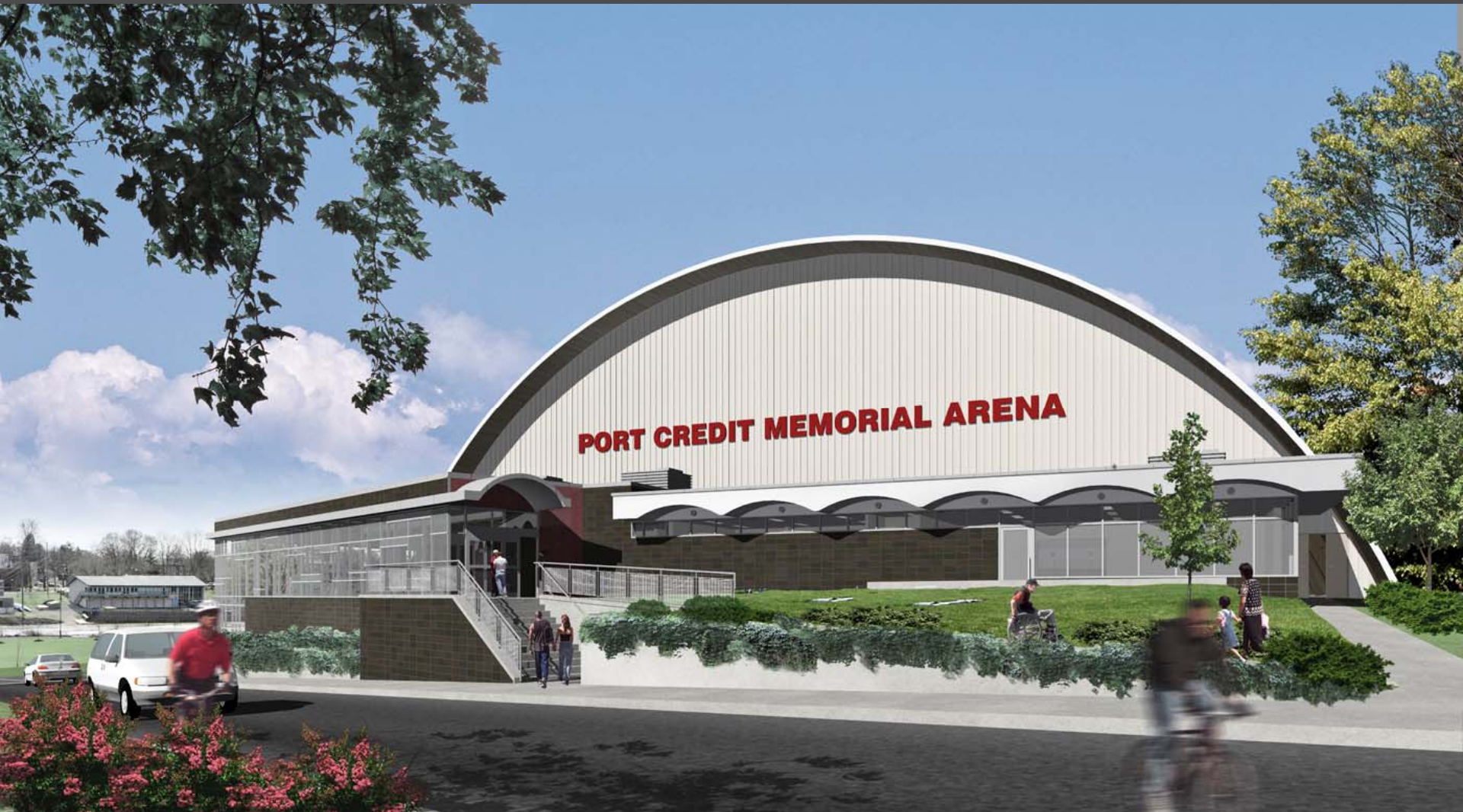
Upper Level Floor Plan

Exterior Perspectives



Existing View from Stavebank

Exterior Perspectives



Concept View from Stavebank

Exterior Perspectives



Existing View from the Parking Lot

Exterior Perspectives



Concept View from the Parking Lot

Exterior Perspectives



Concept View from Lakeshore Road

Interior Heritage Elements

- Structure – Exposed vaulted ceiling made of laminated fir wooden arches and large concrete footings
- Original wooden chairs
- Original Scoreboard
- Plaque
- Historical Memorabilia



Interior Perspectives



Existing View from Upper Entrance into the Arena

Interior Perspectives



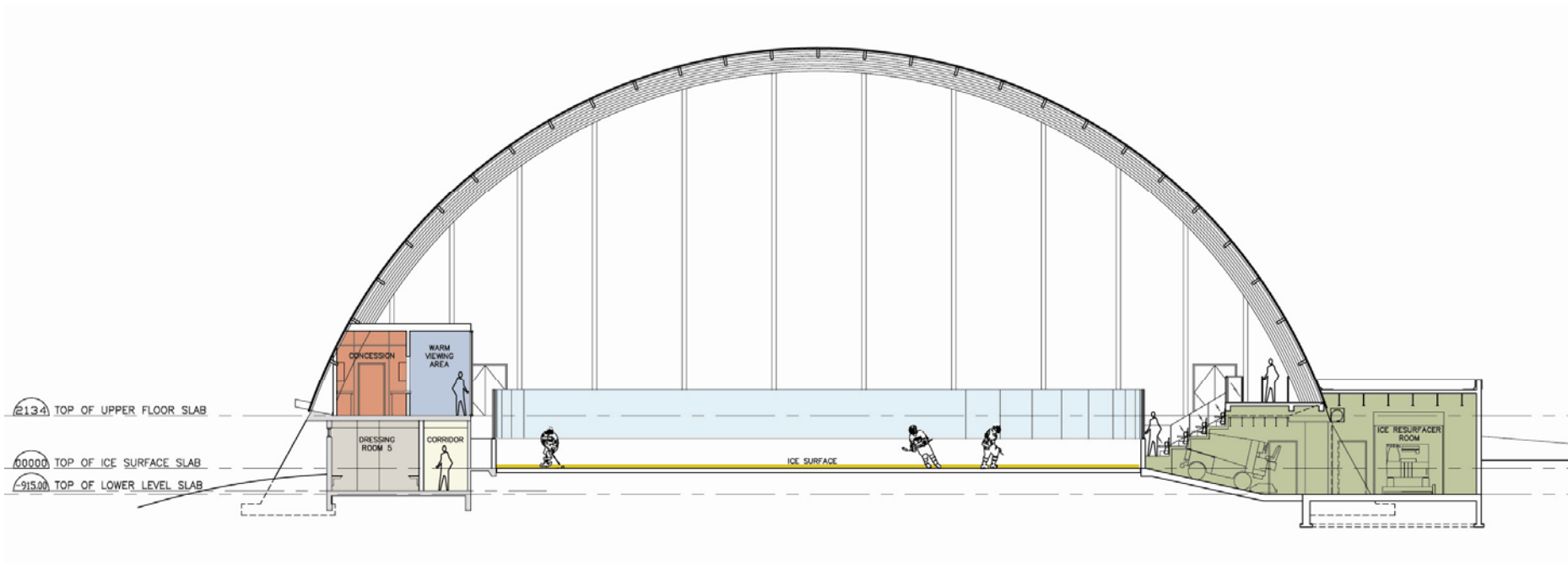
Concept View from Upper Entrance into the Arena

Interior Perspectives



Concept View from Upper Lobby to the Park

Section



Exterior Perspectives



Old View from Lakeshore Road during construction (1959)