

PORT CREDIT MEMORIAL ARENA

City of Mississauga

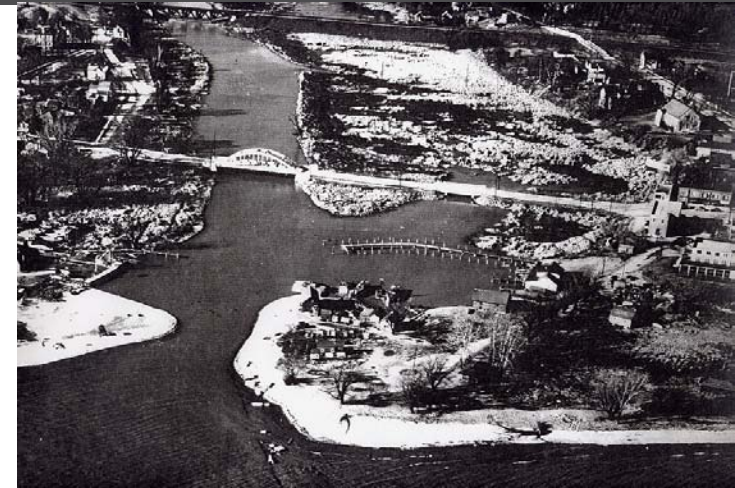


April 1, 2009



Design Objectives

- Reflect the Port Credit Community
- Facility Improvements to Support Program Needs
- Building Code, Accessibility & Universal Design
- Enhance Memorial Park & Public Space
- Sloped Nature of Site/Existing Arena
- Historical Building / Uniqueness
- Maintenance/Operational Improvements to enhance Building Longevity
- Technical Service Access ie. Ice Resurfacer



Before the Arena (1949)



Redevelopment Program

Building

- Existing Building Renovation – 47,000 sf
- New Additions:
 - Lobby / Multi-Purpose Rooms - 6,000 sf
 - Ice Resurfacer Room- 850 sf

Site

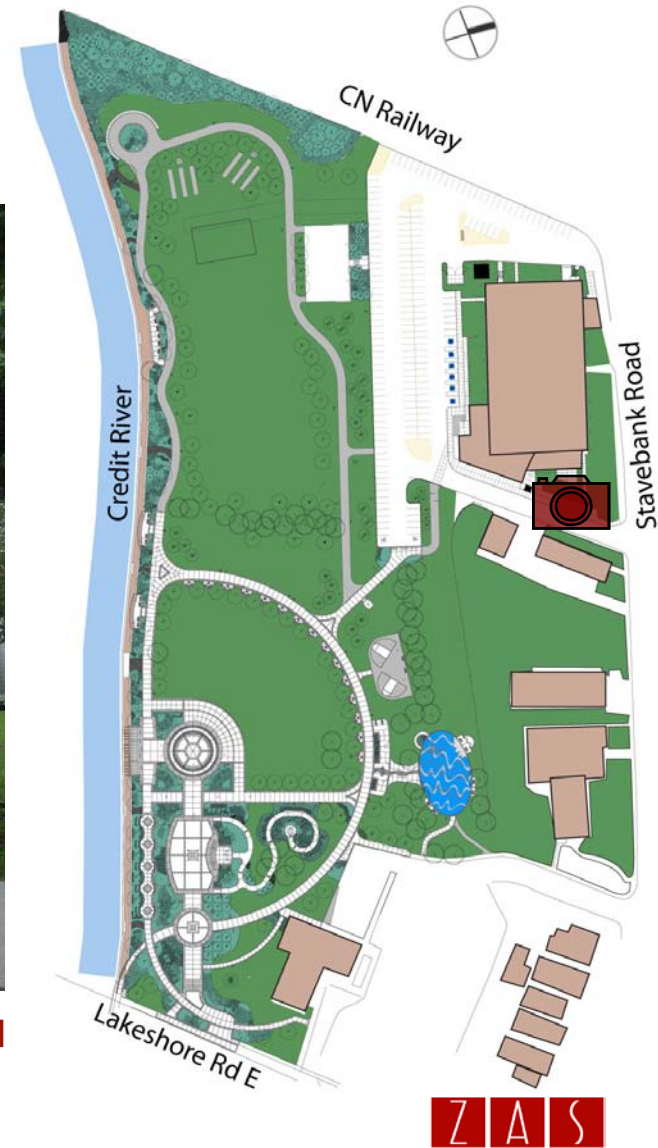
- Parking/Drop-off Redevelopment
 - Current - 168 spaces + 6 accessible
 - Concept - 178 spaces + 8 accessible
- Improved Service Area
- Grades / Access to the Building and Park



Site Context



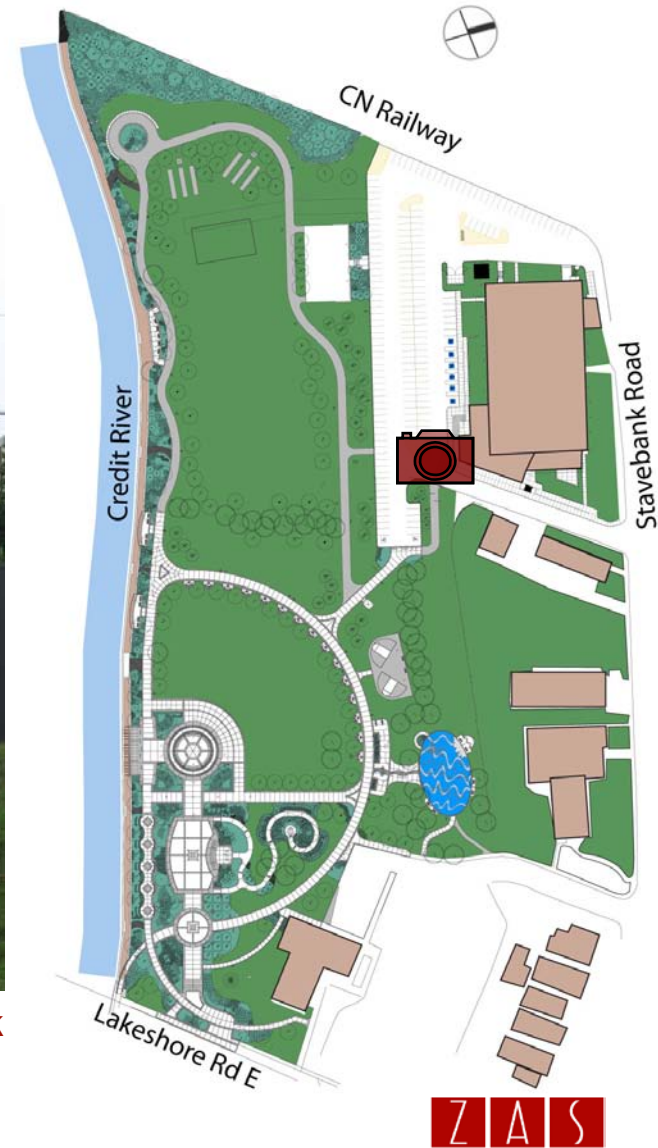
View of Arena from Stavebank Road



Site Context



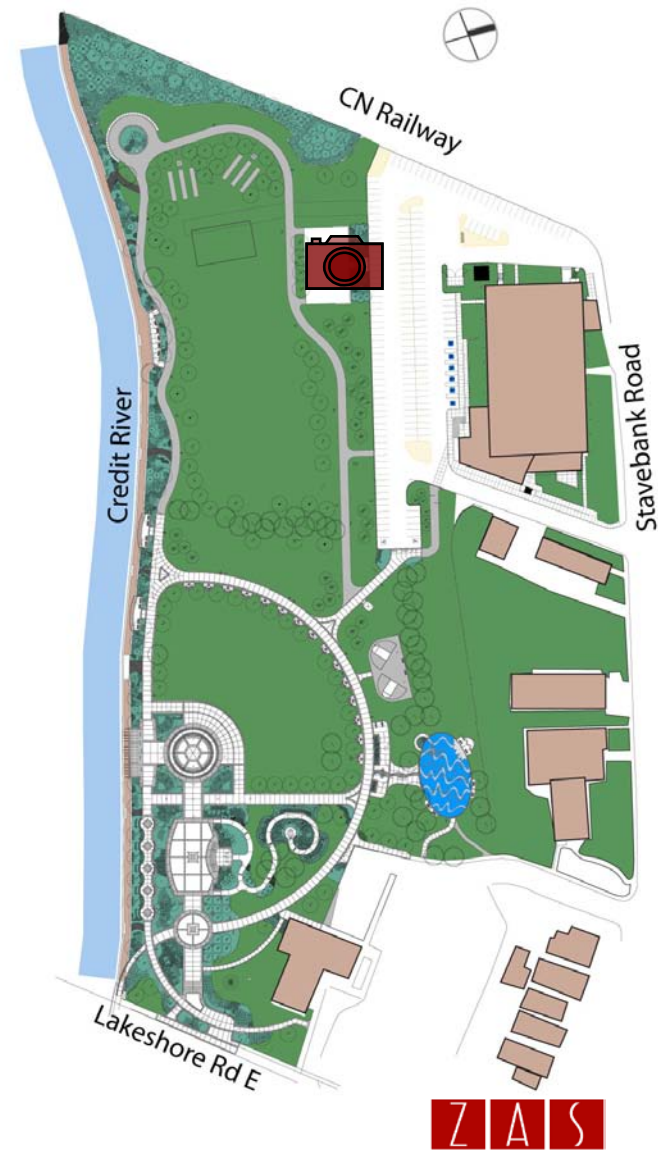
View of the Arena from the Park



Site Context



Skateboarding Park



Site Context



**View of the Credit River
(The Don Rowing Club Boathouse across the River)**



Site Context



Pavilion in the Park



Site Context



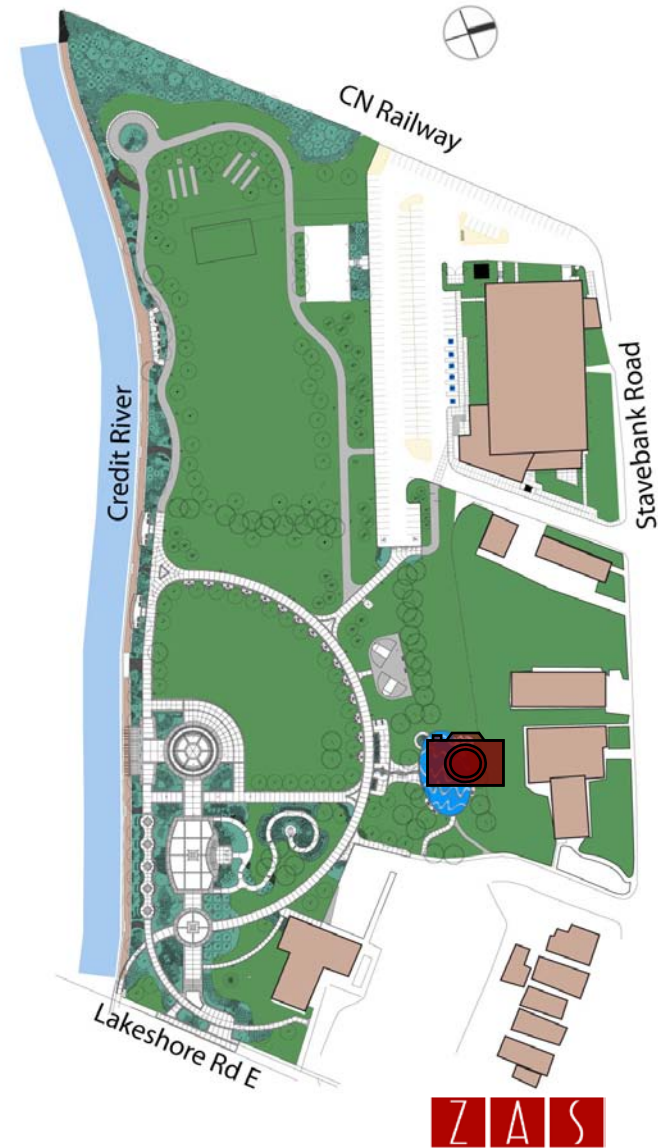
Port Credit Library



Site Context



Children's Park



Site Context



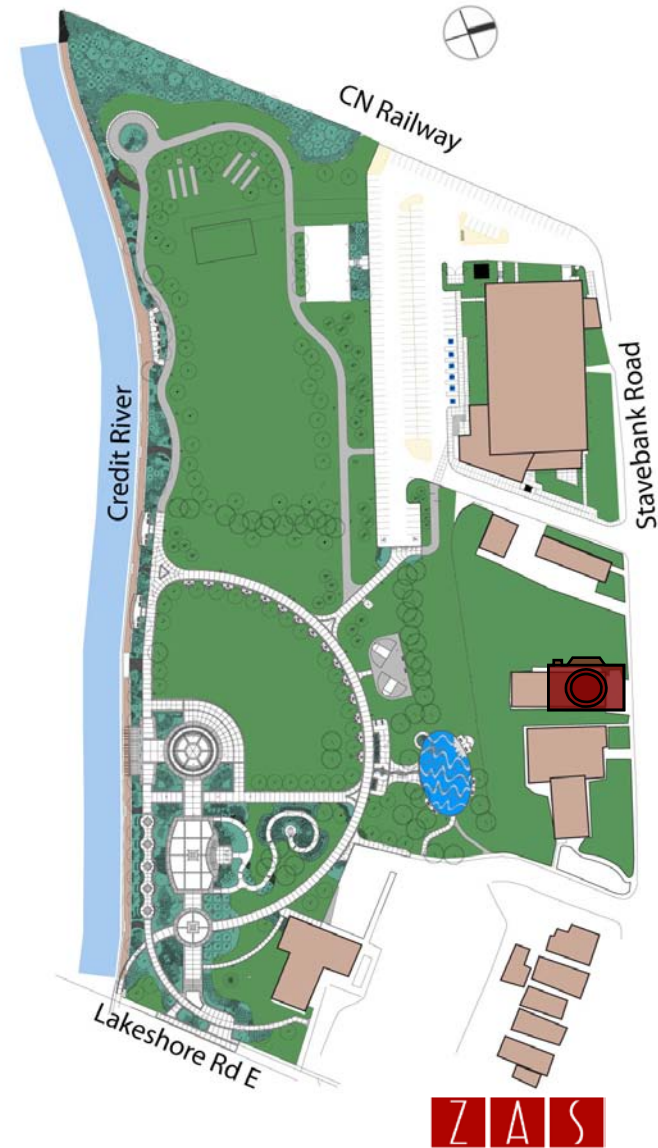
St Andrew's Memorial Presbyterian Church



Site Context

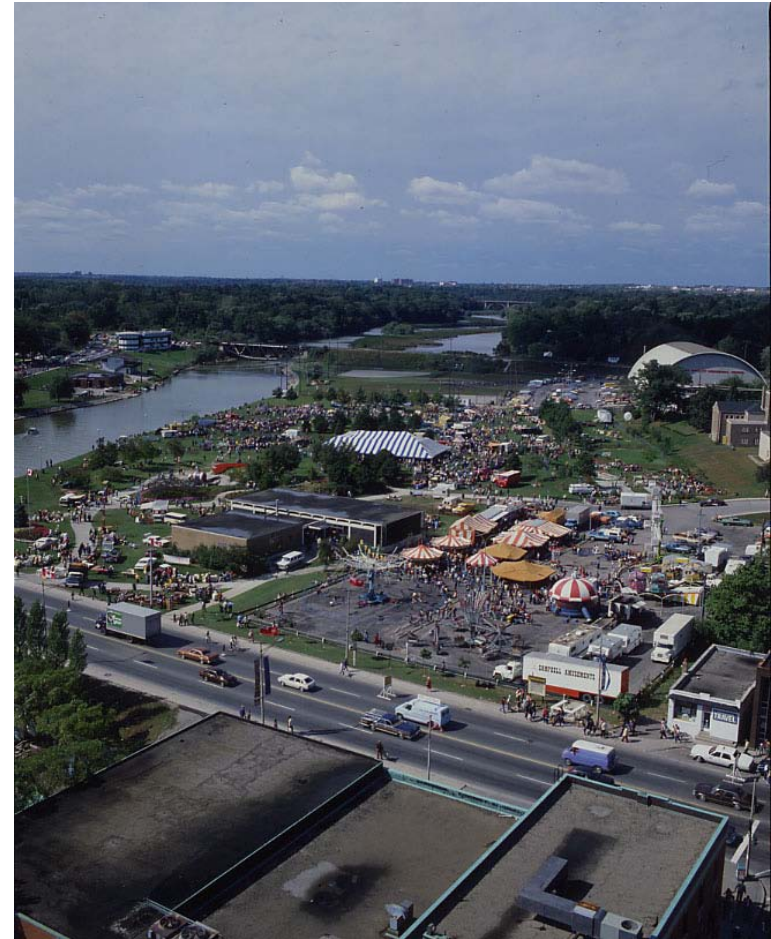


Trinity Anglican Church



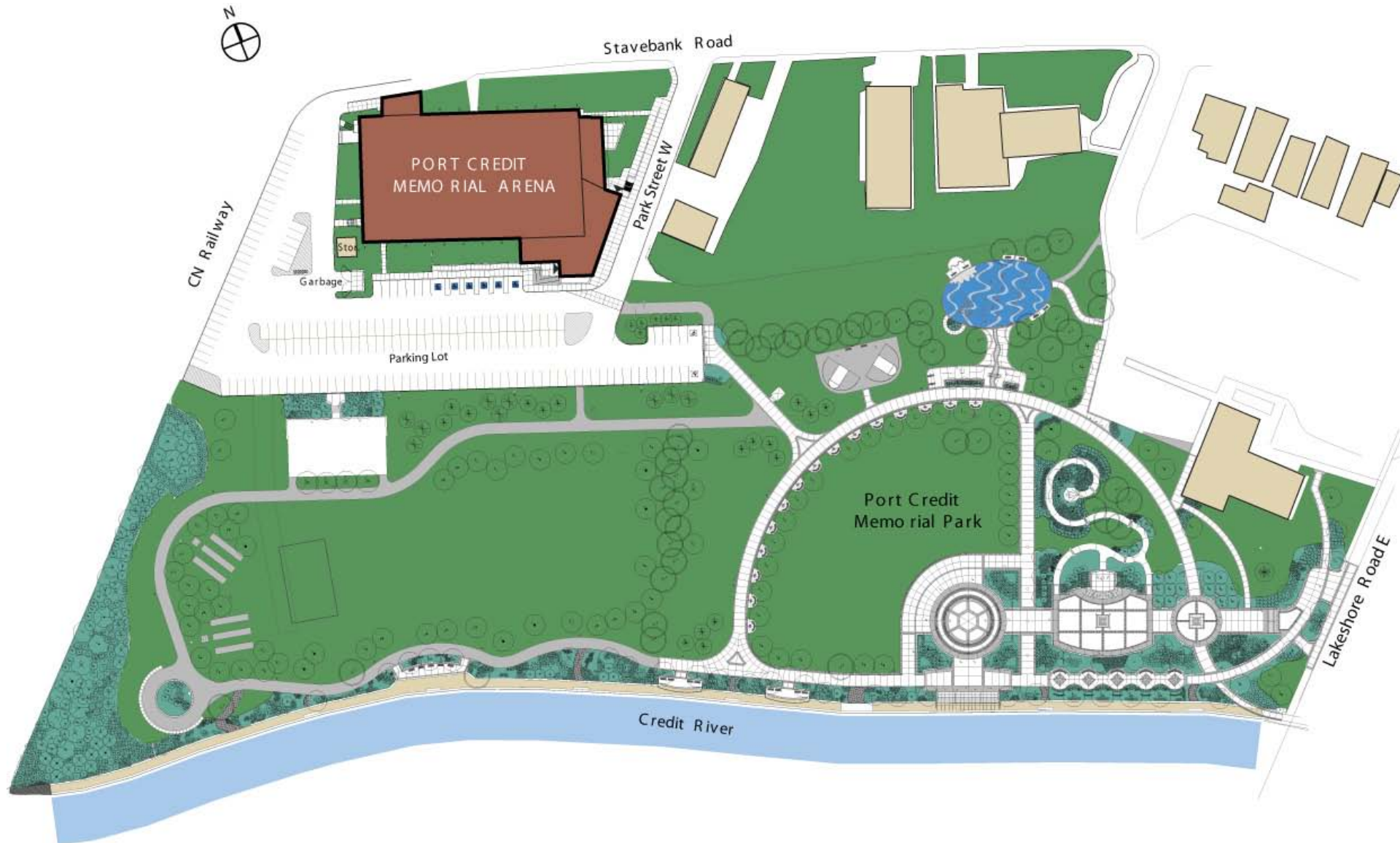
The Arena in the Community

- Overlooks the Memorial Park and the Credit River
- Physical and Visual Link to it's Surroundings
- Coonection with the Park & Heritage Displays
- Staging Area for Jazz and Waterfront Festivals
- Parking lot used for park access (Labatt Stage)
- Parking Lot links Waterfront Trail Bicycle System

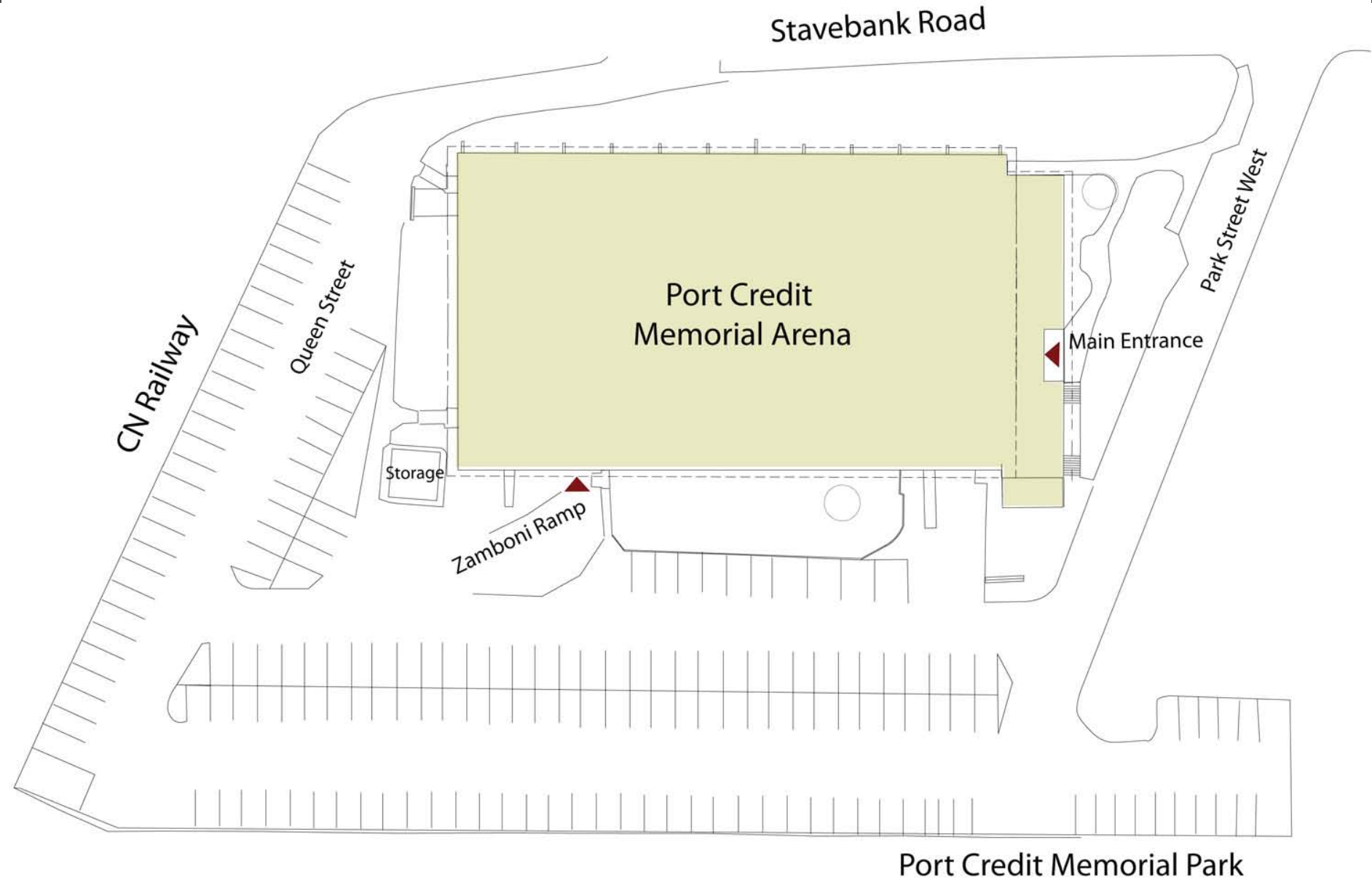


Summer Festival in the Park

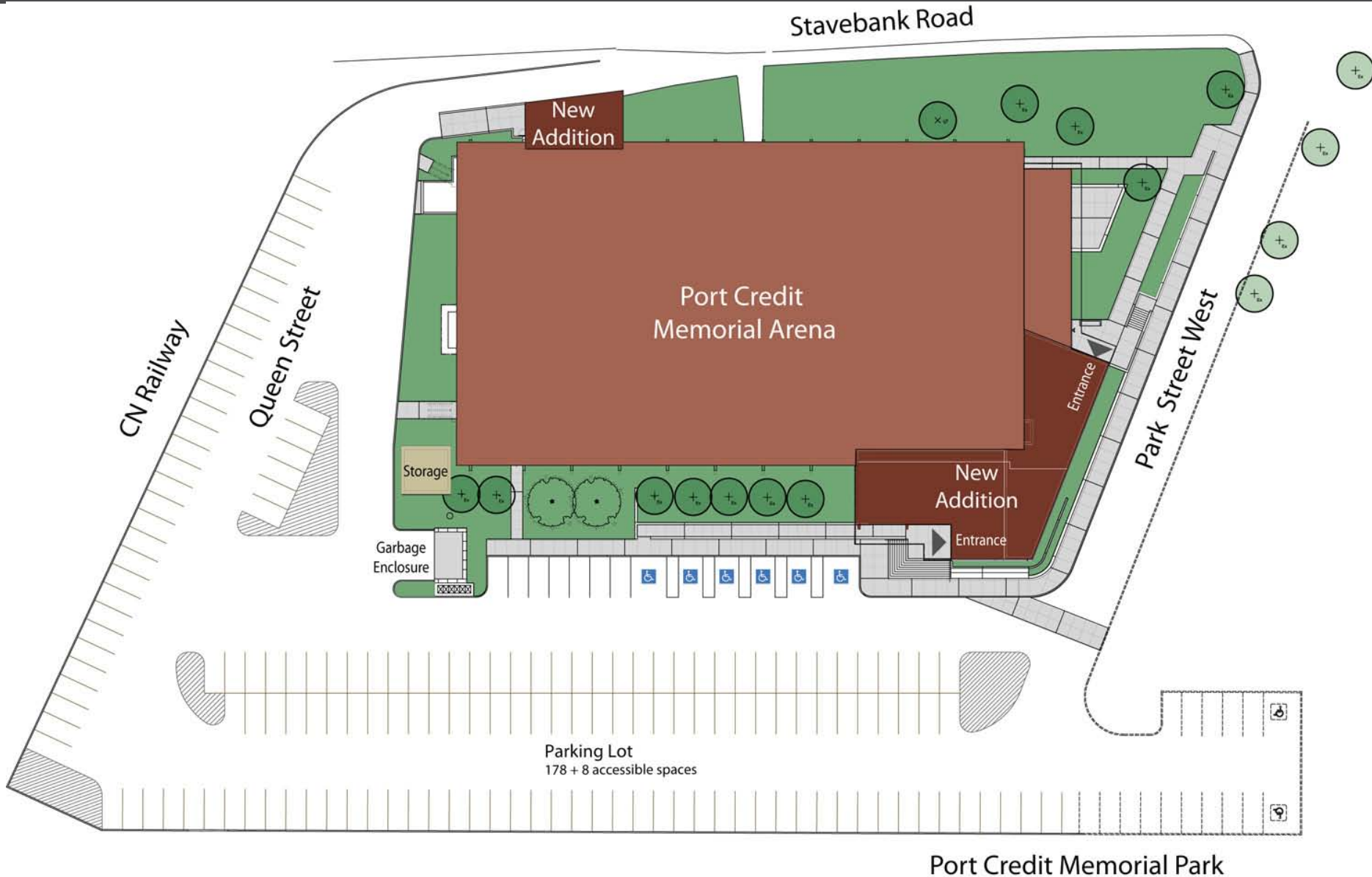
Site Context



Existing Site Plan



Concept Site Plan



Environmental Objectives

Designing to Sustainability “Best Practices”

• Site

- Native Plants
- Natural irrigation from roof
- Dark sky for exterior lighting design
- Storm water system design

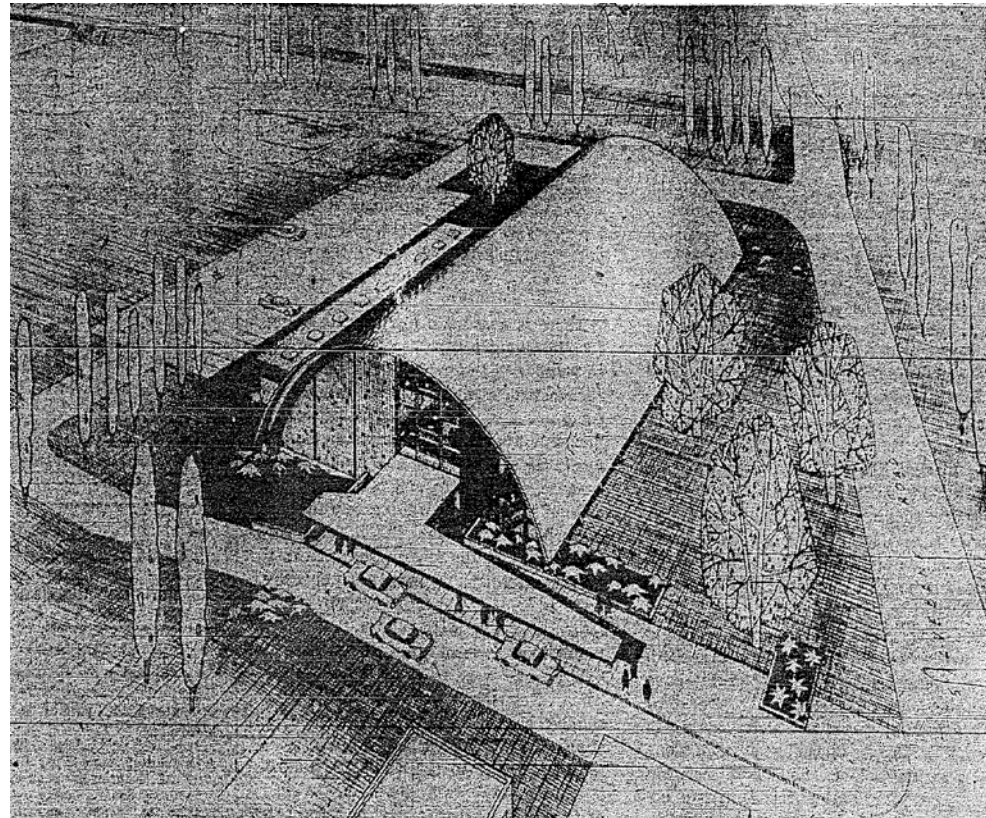
• Building

- High emissivity roofing
- Low emissivity glazing
- Sustainable building materials
- High Energy Efficient Mechanical System
- Water conserving low flow fixtures
- Occupancy sensors



Building Overview

- First Public Arena in Mississauga – 1959
- Mississauga landmark: in process of being designated historical under Ontario Heritage Act
- Publically funded facility
- 1950's post industrial style
- Simple and functional design
- 2 storeys – 47,000 sf – single ice pad
- Home to various Port Credit hockey, figure skating, lacrosse teams etc.
- Venue for many public events throughout the year

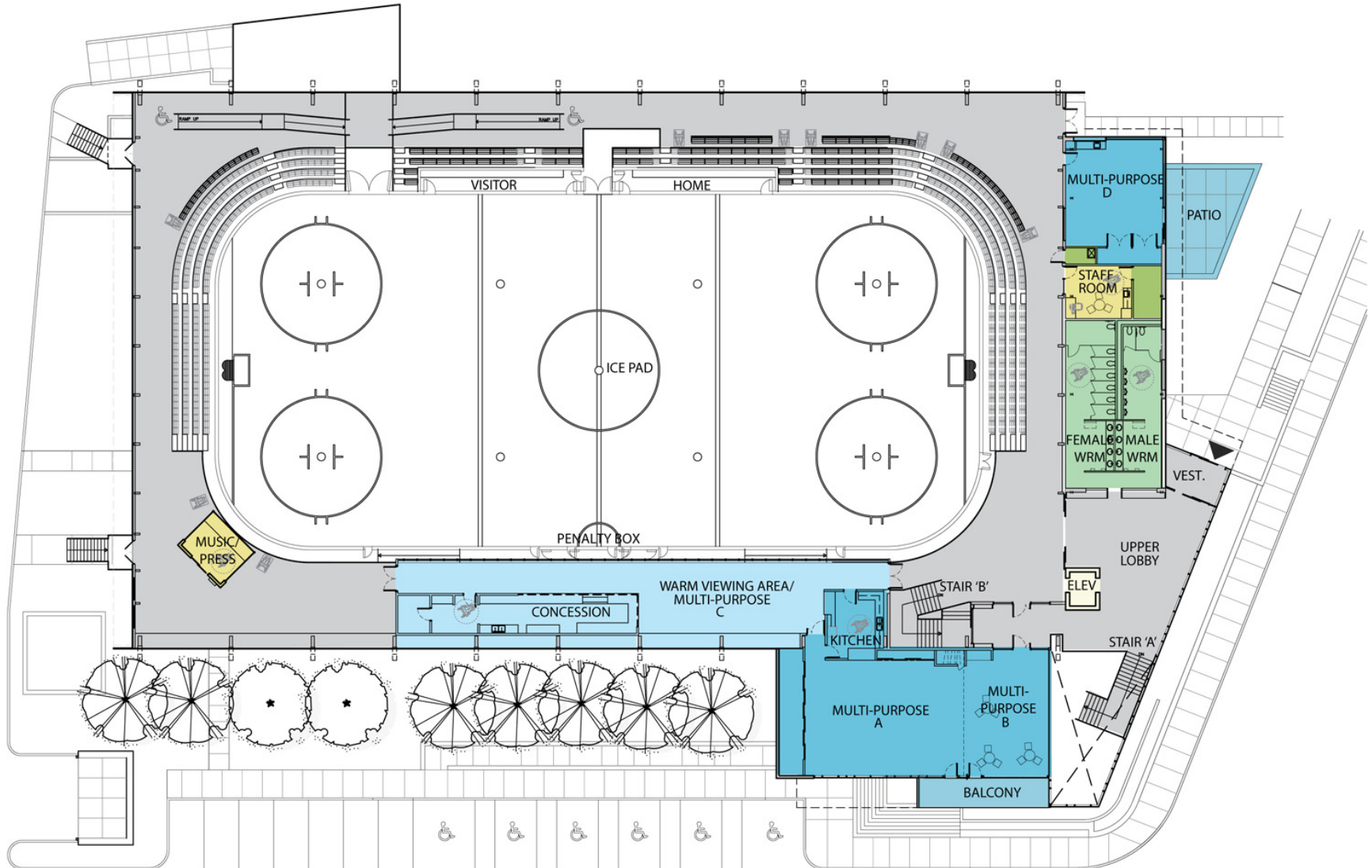


Original Rendering of the Arena



View from Lakeshore Road during Arena construction (1959)

Upper Level Floor Plan



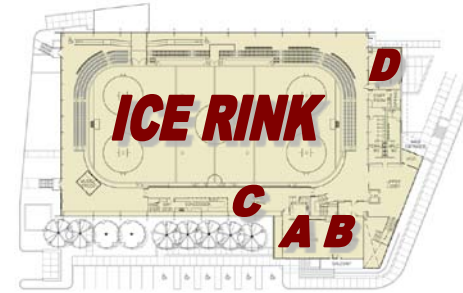
Multi-Purpose Spaces

- **Four (4) Multipurpose Rooms**

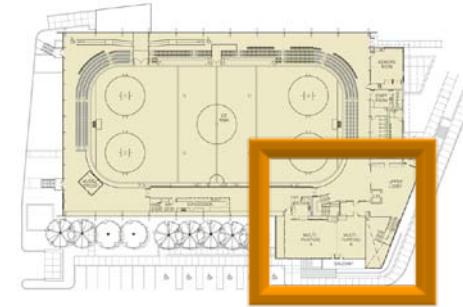
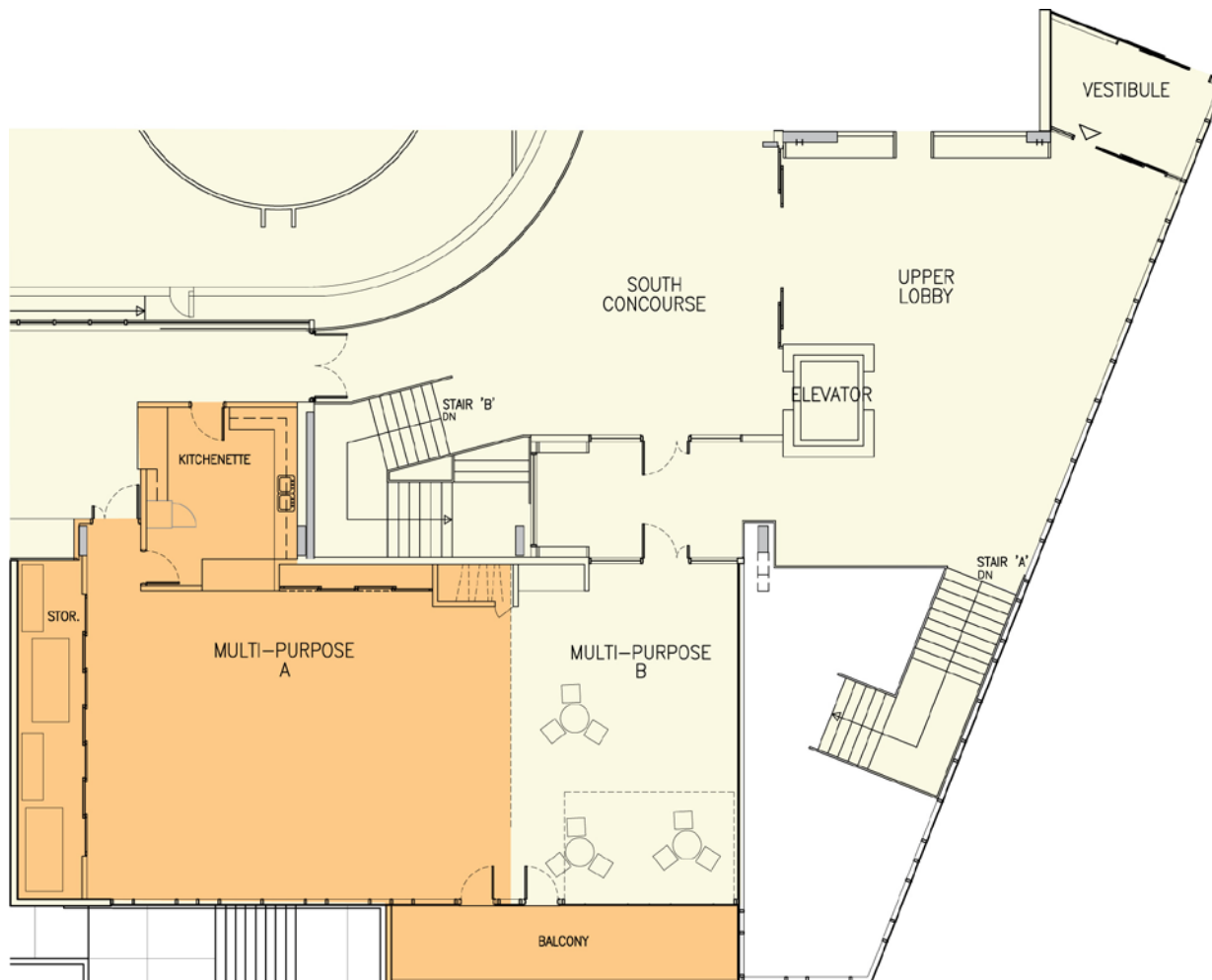
- Small private parties and large events:
 - Exercise classes
 - Birthday / Anniversary parties
 - Craft Fairs
 - Card Tournaments
 - Conferences
- Outdoor Access/Balcony

- **Ice Rink Surface**

- 700 people floor capacity
 - Trade Shows
 - Fund Raising Events
 - Concerts
- 1200 people spectator capacity



Concept Floor Plans



Multi-Purpose A:

100 people floor capacity

kitchenette

coat closet

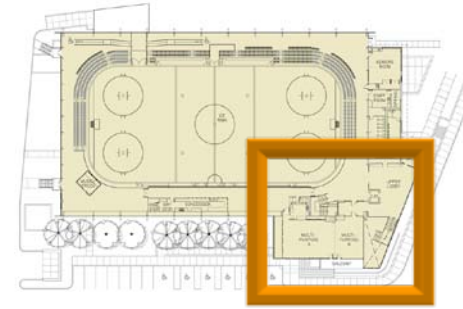
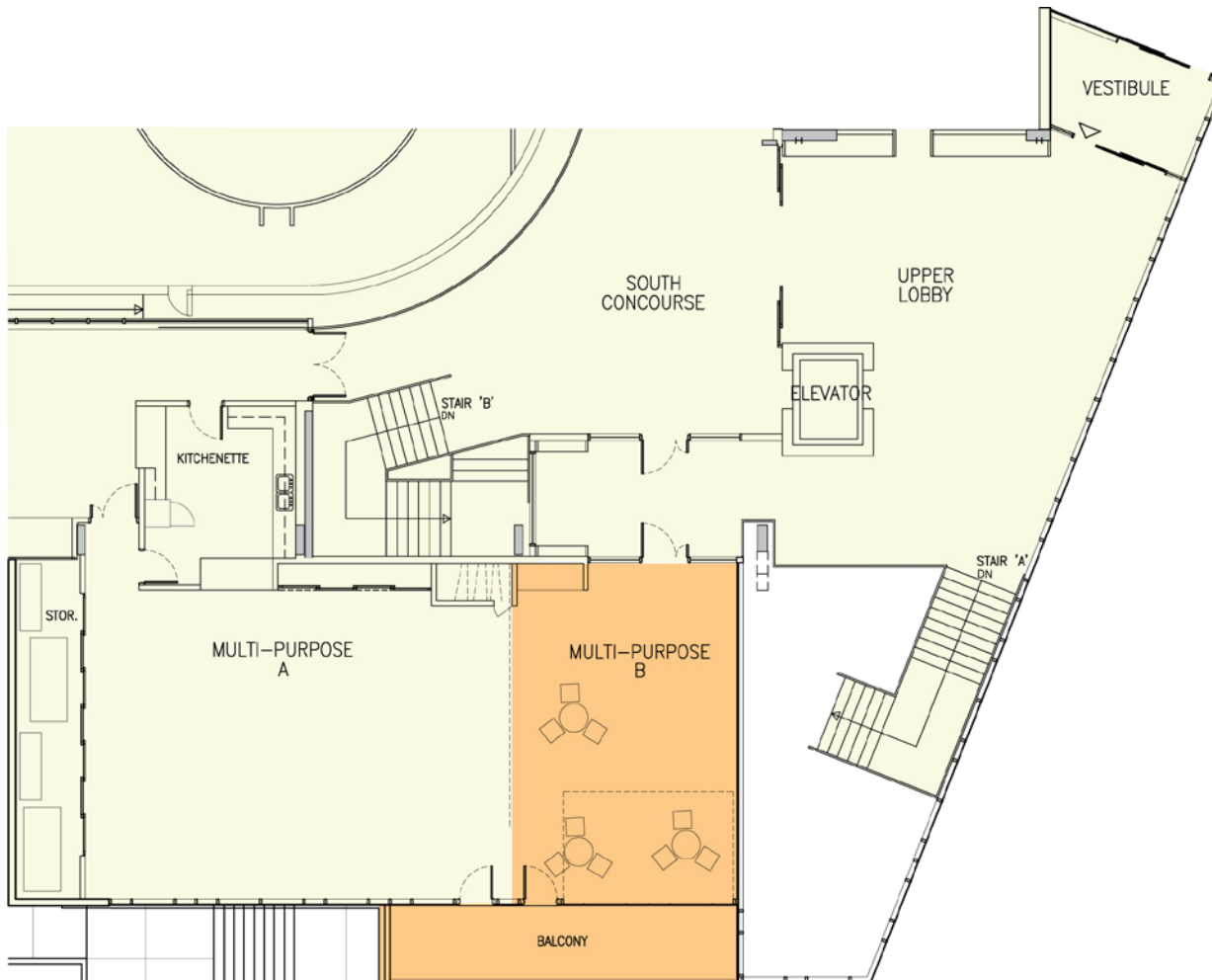
storage for tables and chairs

access to warm view area

balcony

view of the park

Concept Floor Plans



Multi-Purpose B:

50 people floor capacity

coffee counter

balcony

view of the park

Concept Floor Plans

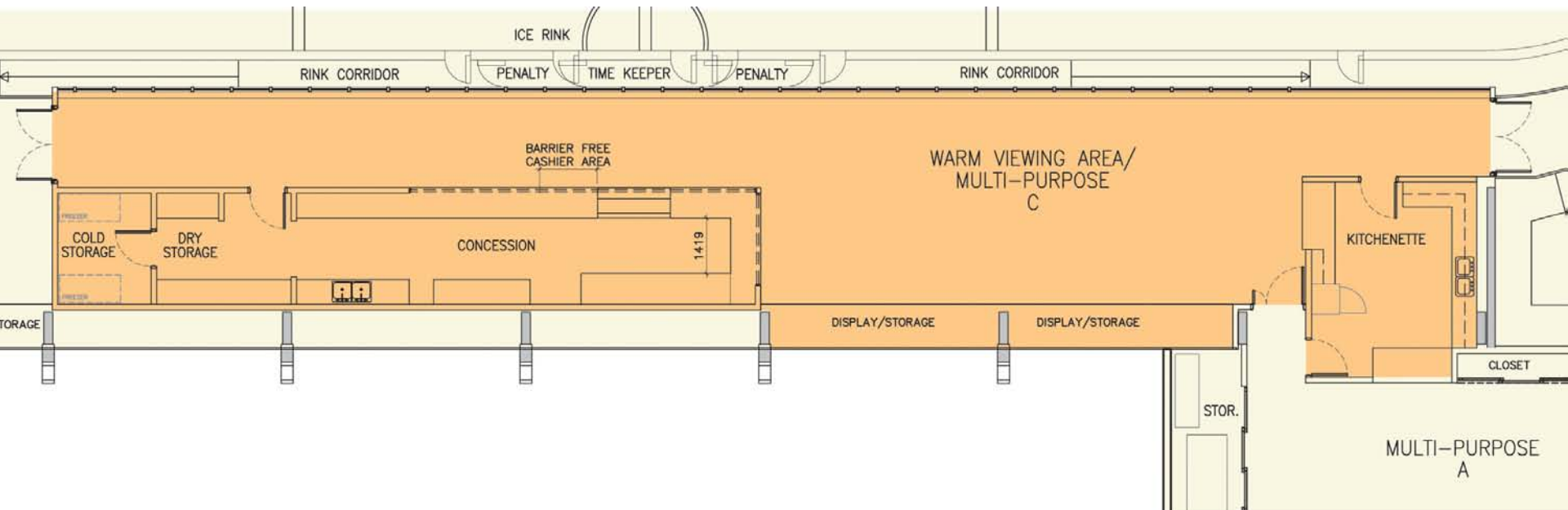
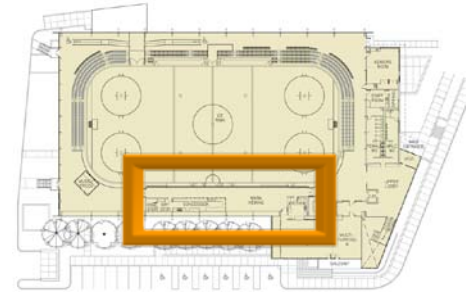
Multi-Purpose C:

120 people floor capacity

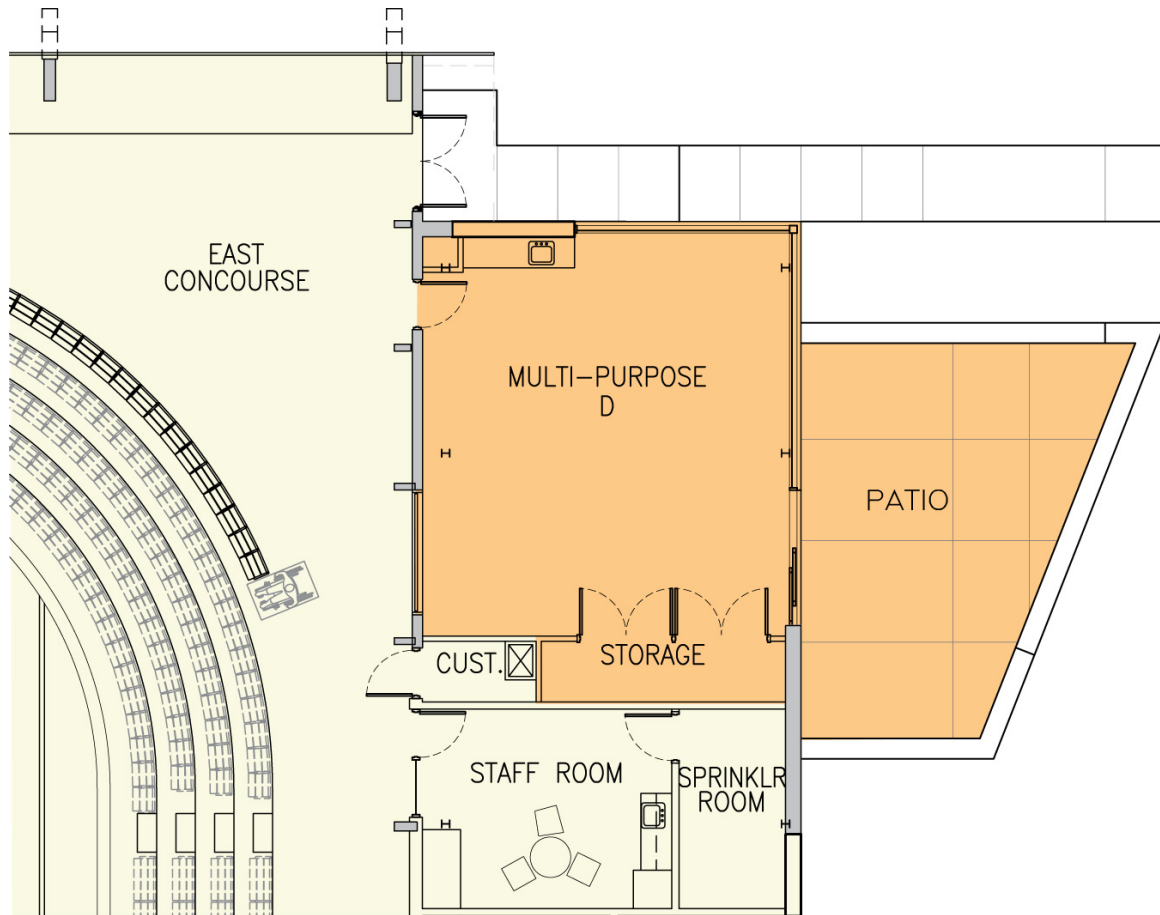
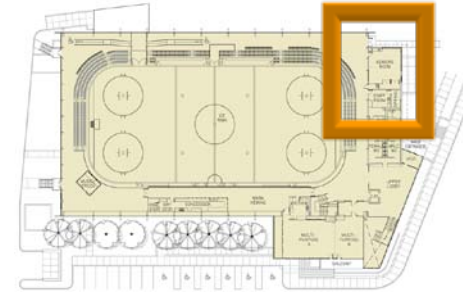
concession

access to kitchenette

overlooking the Ice Rink



Concept Floor Plans



Multi-Purpose D:

60 people floor capacity

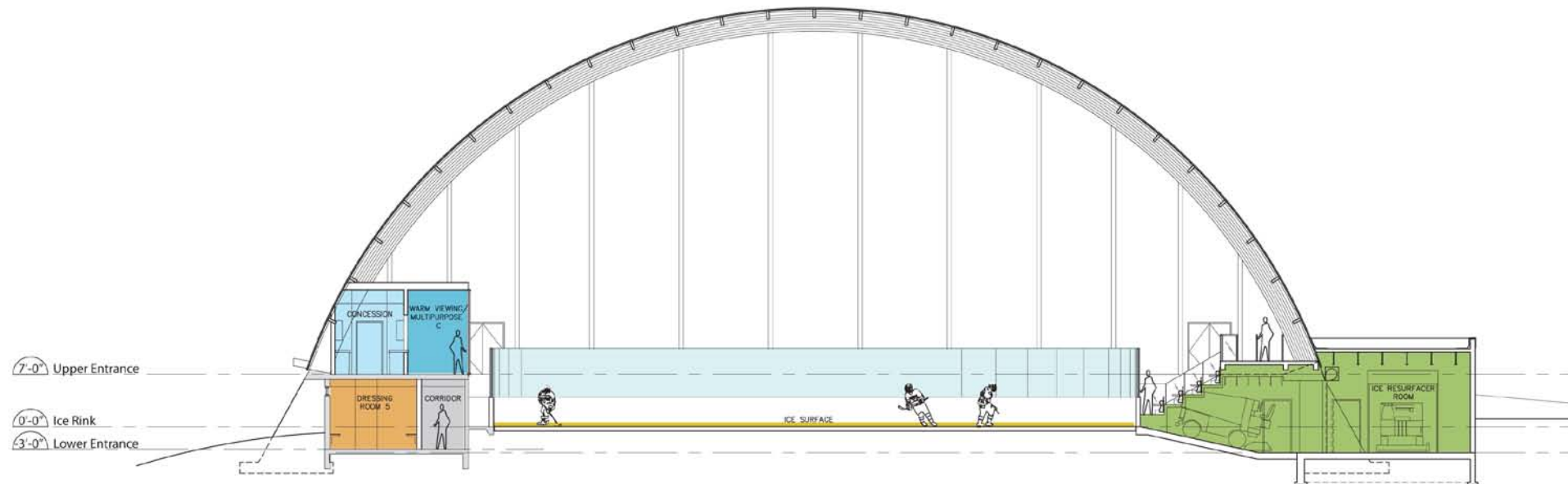
large storage

kitchenette

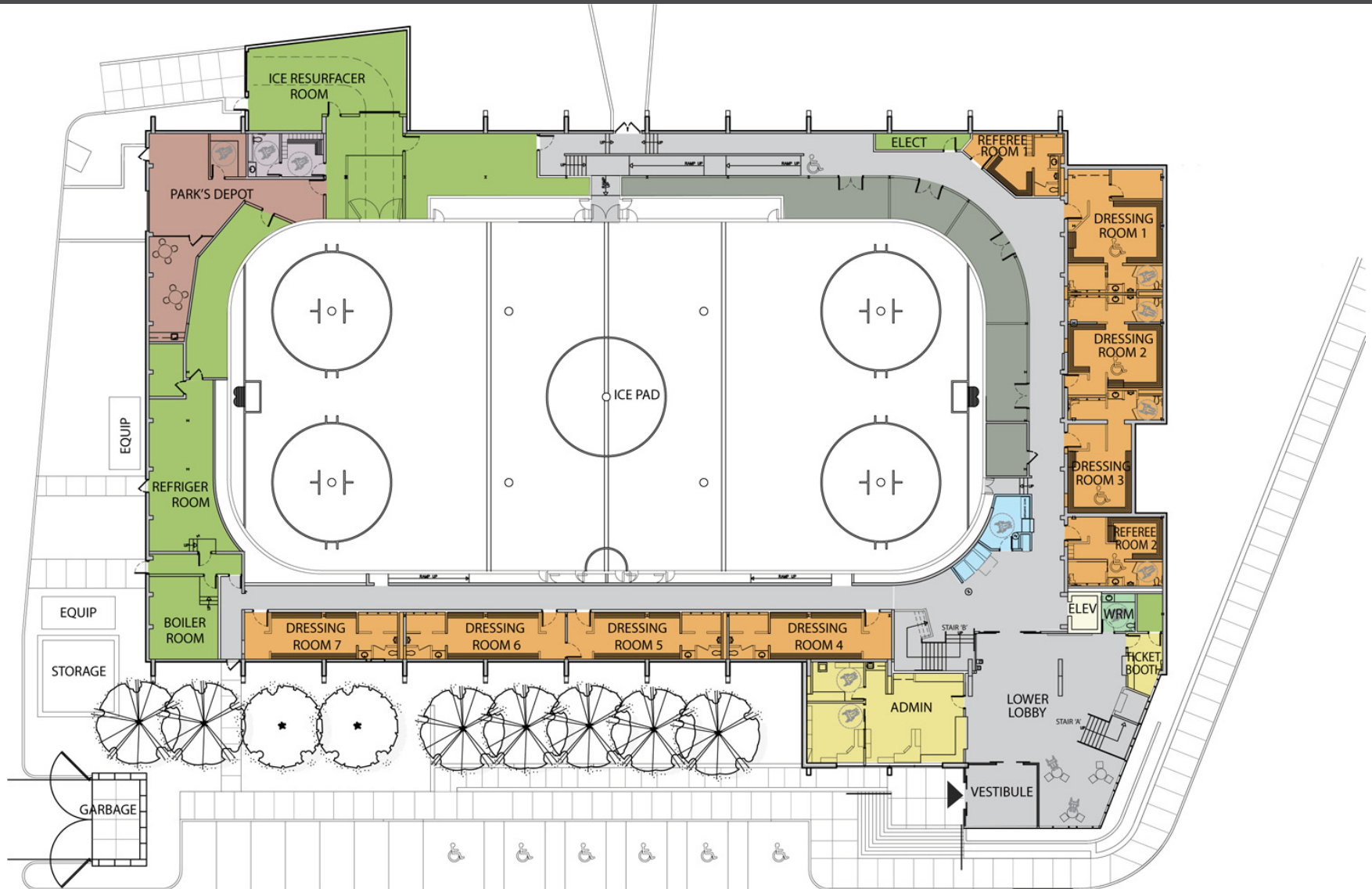
large corner windows

large patio

A Building with Many Levels

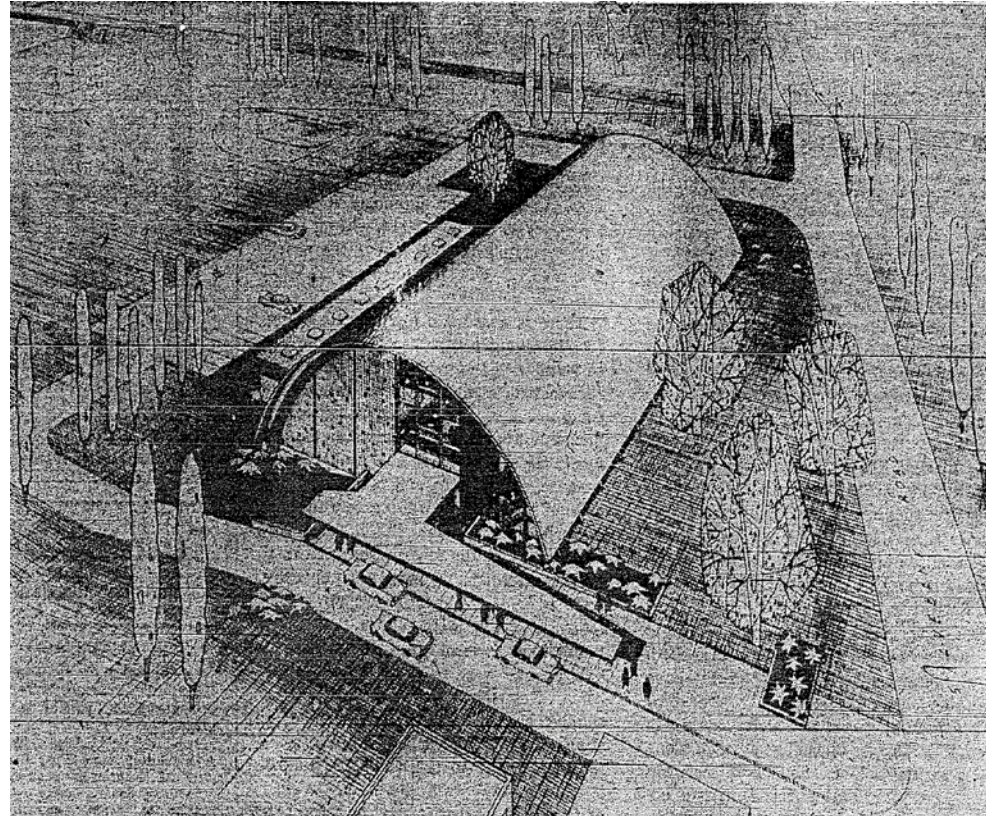


Lower Level Floor Plan



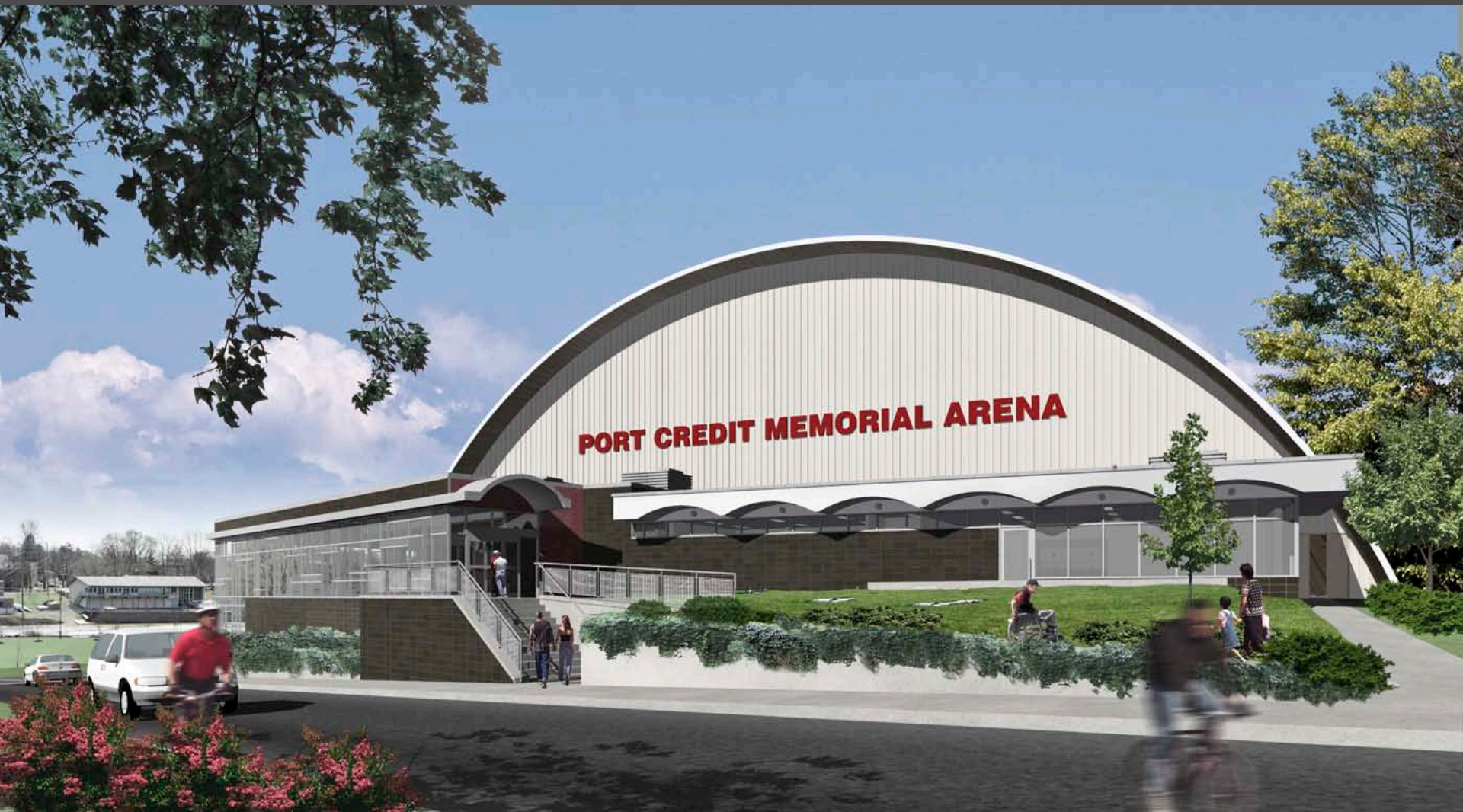
Heritage Elements

- 1950s Post Industrial / Contemporary Architecture – Quonset/ Barrel style
- Barrel vaulted structure made of laminated fir wooden arches, wood deck and large concrete piers
- Simple, Utilitarian, Functional
- Textured roofing material
- Scalloped Soffit/ Canopy
- Signage
- Colour



Original Rendering of the Arena





Concept View from Stavebank to Upper Level Entrance



Existing View from the Parking Lot

PORT CREDIT MEMORIAL ARENA

City of Mississauga



Concept View from the Parking Lot to Lower Level Entrance

PORT CREDIT MEMORIAL ARENA

City of Mississauga



Concept View from Lakeshore Road



Concept View from Lower Lobby to Upper Level



Concept View of the Multi-Purpose Rooms at the Upper Level



Concept View from Upper Lobby to the Park



Existing View from Concourse into the Arena



Concept View from Concourse into the Arena



Concept View of the Ice Rink & Warm Viewing Area



Concept View from the Seating Area

Schedule and Contacts

Schedule:

- Building Closed to Public on March 15, 2010
- Re-opening to the Public for Christmas Holiday Skates – December 2010

For questions or comments, please contact:

- | | |
|-------------------|--|
| • Fernando Moraes | fernando.moraes@mississauga.ca |
| • Laura Piette | laura.piette@mississauga.ca |
| • Kimberley Reck | kimberly.reck@mississauga.ca |
| • Todd Carey | todd.carey@mississauga.ca |
| • Al Foxton | al.foxton@mississauga.ca |

For more information:

- | | |
|-----------|--|
| • Website | www.mississauga.ca/arenas |
|-----------|--|