



# AGENDA

---

## TRAFFIC SAFETY COUNCIL

THE CORPORATION OF THE CITY OF MISSISSAUGA  
**WEDNESDAY, NOVEMBER 23, 2011 – 5:00 P.M**

COMMITTEE ROOM 'A', SECOND FLOOR  
300 CITY CENTRE DRIVE, MISSISSAUGA, ONTARIO L5B 3C1  
**MISSISSAUGA, ONTARIO**  
[www.mississauga.ca](http://www.mississauga.ca)

### Members

Councillor Frank Dale, Ward 4  
Councillor Sue McFadden, Ward 10  
Rick Williams (Trustee Ward 5 - Peel District School Board)  
Esther O'Toole (Trustee Ward 9 & 10 -Dufferin-Peel Catholic School Board)  
Peter Westbrook (Citizen Member Ward 2)  
Boris Swedak (Citizen Member Ward 3)  
Edgar Lethbridge (Citizen Member Ward 4)  
Louise Goegan (Citizen Member Ward 5)  
David Brown (Citizen Member Ward 6) (**CHAIR**)  
Vikram Rao (Citizen Member Ward 7)  
Doug Fryers (Citizen Member Ward 8)  
Heather Relf (Citizen Member Ward 9)  
David Raakman (Citizen Member Ward 10) (**VICE-CHAIR**)  
Bill McBain (Citizen Member Ward 11)

### Advisory Board

Andy Bate, Supervisor, Traffic Operations  
Denna Yaunan, Traffic Operations Technician  
Sheelagh Duffin, Supervisor, Crossing Guards  
Parking Enforcement Officer  
Acting Sgt. Lori Blashuk, Peel Regional Police  
Gale Solomon-Henry, Principals'/Vice-Principals' Association Peel District School Board  
Jo-Anne Coughlin & Laura DiGiambattista, Principals'/Vice-Principals' Association Dufferin-Peel  
Catholic School Board  
Anna Gentile & Marcy Macina, Student Transportation

Contact: Laura Wilson, Legislative Coordinator  
Office of the Clerk 905-615-3200 ext. 5425 Fax 905-615-4181  
[laura.wilson@mississauga.ca](mailto:laura.wilson@mississauga.ca)

## INDEX - TRAFFIC SAFETY COUNCIL – NOVEMBER 23, 2011

### CALL TO ORDER

### DECLARATIONS OF DIRECT (OR INDIRECT) PECUNIARY INTEREST

### PRESENTATIONS/ DEPUTATIONS

### MATTERS TO BE CONSIDERED

1. Approval of Minutes of Previous Meeting
2. Site Inspection Report – Divine Mercy Catholic School, Ward 9
3. Site Inspection Report – Artesian Drive Public School, Ward 8
4. Site Inspection Report – Queenston Drive Public School, Ward 6
5. School Zone Safety (Kiss and Ride) Report – October 2011
6. Dismissal Report – October 2011
7. Proposed Site Plan – Derry West Village Public School, 620 Twain Avenue, Ward 11
8. Walk to School Subcommittee Meeting Minutes – November 10, 2011
9. School Walking Routes Subcommittee Update
10. The Road Safety Committee's Road Safety Handbook – Final Draft
11. Parking Enforcement in School Zones – November 2011

Date of Next Meeting – December 8, 2011 – 5:00 p.m.

### OTHER BUSINESS

### ADJOURNMENT

CALL TO ORDERDECLARATIONS OF DIRECT (OR INDIRECT) PECUNIARY INTERESTPRESENTATIONS/ DEPUTATIONSMATTERS TO BE CONSIDERED1. Approval of Minutes of Previous Meeting

Minutes of the Traffic Safety Council meeting held on October 26, 2011.

RECOMMEND APPROVAL2. Site Inspection Report – Divine Mercy Catholic School, Ward 9

Site Inspection Report for the inspection conducted on October 27, 2011 to review the warrants for placing a Crossing Guard at the intersection of Duncairn Drive and Ruperts Gate for students attending Divine Mercy Catholic School, 2840 Duncairn Drive.

RECOMMENDATION

1. That the request for a Crossing Guard at the intersection of Duncairn Drive and Ruperts Gate for students attending Divine Mercy Catholic School, 2840 Duncairn Drive, be denied as the warrants have not been met.
2. That Parking Enforcement be requested to enforce parking infractions in the vicinity of Divine Mercy Catholic School between 2:45 p.m. and 3:15 p.m.

RECOMMEND APPROVAL3. Site Inspection Report – Artesian Drive Public School, Ward 8

Site Inspection Report for the inspection conducted on November 3, 2011 to review the warrants for placing a Crossing Guard at the intersection of Artesian Drive and Fulwell Road for students attending Artesian Drive Public School, 3325 Artesian Drive.

RECOMMENDATION

1. That the request for a Crossing Guard at the intersection of Artesian Drive and Fullwell Road, for students attending Artesian Drive Public School, 3325 Artesian Drive, be denied as the warrants have not been met.
2. That via the school newsletter the Principal be requested to direct parents not to do the following:
  - a. Not to stop in the No Stopping Zone on Fullwell Road.
  - b. Not to access the property via the school's driveway exit.
3. That the Legislative Coordinator be requested to send a PDF of a No Stopping Sign to the Principal.
4. That the Transportation and Works Department be requested to review the No Stopping signs at the curb cut and landing pad on the north side of Artesian Drive opposite Dundoon Drive.

RECOMMEND APPROVAL

4. Site Inspection Report – Queenston Drive Public School, Ward 6

Site Inspection Report for the inspection conducted on November 1, 2011 to review the pedestrian safety at the intersection of Burnhamthorpe Road and Creditview Road/ Central Parkway West, and to review pedestrian safety along the walking route from the intersection to Queenston Drive Public School for students attending Queenston Drive Public School, 3520 Queenston Drive.

RECOMMENDATION

That the Site Inspection Report dated November 1, 2011, to review pedestrian safety at the intersection of Burnhamthorpe Road and Creditview Road/ Central Parkway West, and to review pedestrian safety along the walking route from Burnhamthorpe Road and Creditview Road/ Central Parkway West to Queenston Drive Public School, 3520 Queenston Drive, be received for information.

RECOMMEND APPROVAL

5. School Zone Safety (Kiss and Ride) Report – November 2011

RECOMMENDATION

That the School Zone Safety (Kiss and Ride) Report, for the month of November 2011, be received.

RECOMMEND RECEIPT

The following recommendations emanated from the School Zone Safety (Kiss and Ride) Report for the month of November 2011:

**November 1, 2011**

**Edenrose Public School, Ward 6**

**Recommendation:**

1. That the Principal of Edenrose Public School 1342 Edenrose Street, be requested to remind parents to do the following during the morning drop off period as these procedures relate to student safety:
  - a. To adhere to the No Left Turn prohibition at the driveway exit to ease congestion along Edenrose Street.
  - b. To arrive at the school before 8:55 a.m. when school starts, as staff are available to monitor student safety during drop off procedures prior to the entry bell.
  - c. To remain in their vehicles when dropping off their child(ren) so that traffic continues to flow in the School Zone Safety (Kiss and Ride) Lane.
2. That the Walk to School subcommittee of Traffic Safety Council be requested contact the Principal or Champion of the School Walking Routes Program at Edenrose Public School to assess the effectiveness of the program and develop and implement solutions to increase participation.

**November 1, 2011**

**Artesian Drive Public School, Ward 8**

**Recommendation:**

1. That the Peel District School Board be requested to review the feasibility of installing two No Left Turn signs with time restrictions (between 8:00 a.m. and 9:00 a.m.) at the driveway exit of Artesian Drive Public School, 3325 Artesian Drive.
2. That Parking Enforcement be requested to enforce parking infractions along Artesian Drive in the vicinity of Artesian Drive Public School, 3325 Artesian Drive, between 8:00 a.m. and 8:30 a.m.

**November 16, 2011****Darcel Avenue Senior Public School, Ward 5****Recommendation:**

1. That the Peel District School Board be requested to do the following for Darcel Avenue Senior Public School, 7635 Darcel Avenue:
  - a. Advise Traffic Safety Council if a School Zone Safety (Kiss and Ride) Program was ever developed at the school, and if there is a schedule for implementation.
  - b. Review the feasibility of installing appropriate School Zone Safety (Kiss and Ride) signage on school property.
3. That if a School Zone Safety (Kiss and Ride) Program is implemented at Darcel Avenue Senior Public School, the Legislative Coordinator be requested to arrange for staff and volunteer training regarding the effective running of the program.
4. That the Principal of Darcel Avenue Senior Public School be requested to direct parents and students to use the sidewalk entrance to the school.

**November 15, 2011****Thorn Lodge Drive Public School, Ward 2****Recommendation:**

That the Principal of Thorn Lodge Drive Public School, 2730 Thorn Lodge Drive be requested to do the following:

- a. Direct school bus drivers to pull up to the Stop Bar of the bus lane when dropping off students.
- b. Direct Staff monitoring the morning drop off to wear the safety vests provided by Traffic Safety Council.
- c. Direct students and parents to use the side entrance of the school.

**November 17, 2011****McKinnon Public School, Ward 10****Recommendation:**

That the Transportation and Works Department be requested to review the timing of the green light for motorists at the intersection of Tenth Line West and Tacc Drive between 8:15 a.m. and 8:30 a.m. on weekdays to allow more east bound motorists from McKinnon Public School, 3270 Tacc Drive, through the intersection.

**RECOMMEND APPROVAL**

6. Dismissal Report – October and November 2011

RECOMMENDATION

That the Dismissal Report for the months of October and November 2011 be received for information.

RECOMMEND RECEIPT

The following recommendations emanated from the Dismissal Report for the month of October and November 2011:

**October 27, 2011**

**St. Faustina Catholic School, Ward 10**

Recommendation:

That Parking Enforcement be requested to enforce the parking infractions in front of St. Faustina Catholic School, 3420 McDowell Drive, between 3:20 p.m. and 3:45 p.m.

**November 1, 2011**

**Artesian Drive Public School, Ward 8**

Recommendation:

1. That Parking Enforcement be requested to enforce the parking infractions in front of Artesian Drive Public School, 3325 Artesian Drive between 2:50 p.m. and 3:10 p.m., for a minimum of three days.
2. That the Peel District School Board be requested to place two oversized Exit Only signs at the driveway exit of Artesian Drive Public School.
3. That the Principal of Artesian Drive Public School be requested to communicate to parents that access to the parking lot via the driveway exit is not permitted.

**November 7, 2011**

**Lisgar Middle School, Ward 10**

Recommendation:

That Parking Enforcement be requested to enforce the parking infractions in front of Lisgar Middle School, 6755 Lisgar Drive, between 2:15 p.m. and 2:35 p.m.

**November 8, 2011****Brian W. Fleming Public School, Ward 3****Recommendation:**

1. That the Transportation and Works Department be requested to replace the faded No Stopping and No Parking signs along Havenwood Drive in the vicinity of Brian W. Fleming Public School, 3255 Havenwood Drive.
2. That Parking Enforcement be requested to enforce the parking infractions in front Brian W. Fleming Public School, between 3:15 p.m. and 3:40 p.m.
3. That the Peel District School board be requested to review the feasibility of doing the following at Brian W. Fleming Public School:
  - a. Repaint the pavement markings.
  - b. Complete the grinding and curb modifications at the easterly turn circle and front driveway to accommodate the changes to the School Zone Safety (Kiss and Ride) and Exclusive Bus lanes.

**November 9, 2011****St. Teresa of Avila Catholic School, Ward 9****Recommendation:**

That Parking Enforcement be requested to enforce parking infractions along Montevideo Road and Esprit Crescent, in the vicinity of St. Teresa of Avila Catholic School, 6675 Motevideo Road, between 2:50 p.m. and 3:10 p.m.

**November 15, 2011****Darcel Avenue Senior Public School, Ward 5****Recommendation:**

1. That the Transportation and Works Department be requested to review the feasibility of installing No Stopping and No Parking signs along Darcel Avenue in the vicinity of Darcel Avenue Senior Public School, 7635 Darcel Avenue.
2. That Parking Enforcement be requested to enforce parking infractions in front of Darcel Avenue Senior Public School between 2:40 p.m. and 3:05 p.m.

**November 16, 2011****Holy Cross Catholic School, Ward 5****Recommendation:**

1. That the Transportation and Works Department be requested to review the No Parking and No Stopping signs along Darcel Avenue and Morningstar Drive for students attending Holy Cross Catholic School, 3615 Morningstar Drive.
2. That Parking Enforcement be requested to enforce parking infractions along Darcel Avenue and Morningstar Drive between 2:50 p.m. and 3:10.

**RECOMMEND APPROVAL**



7. Proposed Site Plan – Derry West Village Public School, Ward 11

Report dated November 17, 2011 from the Site Plan Review Subcommittee with respect to the Proposed Site Plan, for changes to Derry West Village Public School, 620 Twain Avenue.

RECOMMENDATION

That the Commissioner of Planning and Building be advised that with respect to the proposed Site Plan for Derry West Village Public School, 620 Twain Avenue, Ward 11, that the Traffic Safety Council Site Plan Review Subcommittee reviewed the site plan on November 17, 2011 and would recommend the following:

1. That the outgoing School Zone Safety (Kiss and Ride) driveway be widened by eight meters.
2. That School Zone Safety (Kiss and Ride) Lane pavement markings be painted on the driveway.
3. That a Stop Bar and Stop Sign be installed at the end of the School Zone Safety (Kiss and Ride) drop off lane in close proximity to the entrance.
4. That the Peel District School Board consider relocating the accessible parking spaces to the school side of the driveway.
5. That Do Not Enter and Busses Excepted signs be installed at the entrance of the exclusive bus lane.
6. That a Busses Only pavement marking be painted at the entrance of the exclusive bus lane.
8. That a Do Not Enter sign be installed at the easterly side of the driveway exit facing Twain Avenue.
9. That at both sides of the driveway exit, Stop Signs be installed on the reverse side of the Do Not Enter signs.
10. That the Peel District School Board consider designating up to ten parking spaces for Kindergarten drop off and pick up at the north east corner of the new parking area.
11. That the revised site plan indicate a lock gate at the school property's west boundary where the sidewalk extends to a City of Mississauga walkway.
12. That the Peel District School Board use the school's new edition for Senior Kindergarten students to facilitate the drop off and pick up of Junior Kindergarten students.

RECOMMEND APPROVAL

8. Walk To School Subcommittee of Traffic Safety Council Meeting Minutes

The minutes from the November 10, 2011 Walk to School Subcommittee meeting.

RECOMMEND RECEIPT9. Walk to School Subcommittee Update

A verbal update by Louise Goegan with respect to the School Walking Routes Program.

10. The Road Safety Committee's Road Safety Handbook – Final Draft

Portions of the final draft of the Road Safety Committee's Road Safety Handbook, specific to traffic safety in school zones, for Traffic Safety Council's information.

RECOMMEND RECEIPT11. Parking Enforcement in School Zones – October 2011

Memorandum from the Manager of Parking Enforcement reporting on parking enforcement in school zones for the month of October 2011.

RECOMMENDATION:

That the memorandum from the Manager of Parking Enforcement reporting on parking enforcement in school zones for the month of October 2011 be received.

RECOMMEND RECEIPT

Date of Next Meeting– December 8, 2011 – 5:00 p.m.

OTHER BUSINESSADJOURNMENT



Traffic Safety Council

**NOV 23 2011**

# MINUTES

## TRAFFIC SAFETY COUNCIL

THE CORPORATION OF THE CITY OF MISSISSAUGA  
**WEDNESDAY, OCTOBER 26, 2011 – 5:00 P.M**

COMMITTEE ROOM 'A', SECOND FLOOR  
300 CITY CENTRE DRIVE, MISSISSAUGA, ONTARIO L5B 3C1

**MISSISSAUGA, ONTARIO**

[www.mississauga.ca](http://www.mississauga.ca)

### Members Present

Councillor Frank Dale, Ward 4  
Councillor Sue McFadden, Ward 10  
Rick Williams (Trustee Ward 5 - Peel District School Board)  
Peter Westbrook (Citizen Member Ward 2)  
Boris Swedak (Citizen Member Ward 3)  
Edgar Lethbridge (Citizen Member Ward 4)  
Louise Goegan (Citizen Member Ward 5)  
David Brown (Citizen Member Ward 6) **(CHAIR)**  
Heather Relf (Citizen Member Ward 9)  
David Raakman (Citizen Member Ward 10) **(VICE-CHAIR)**

### Members Absent

Douglas Fryers  
Bill McEwan (Citizen Member Ward 11)  
Esther O'Toole (Trustee Ward 9 & 10 -Dufferin-Peel Catholic School Board)  
Vikram Rao (Citizen Member Ward 7)

### Advisory Board

Andy Bate, Supervisor, Traffic Operations  
Denna Yaunan, Traffic Operations Technician  
Sheelagh Duffin, Supervisor, Crossing Guards  
Paolo Di Salvo, Parking Enforcement Officer  
Anna Gentile, Student Transportation of Peel Region

Contact: Laura Wilson, Legislative Coordinator  
Office of the Clerk 905-615-3200 ext. 5425 Fax 905-615-4181  
[laura.wilson@mississauga.ca](mailto:laura.wilson@mississauga.ca)

INDEX - TRAFFIC SAFETY COUNCIL – OCTOBER 26, 2011

CALL TO ORDER

DECLARATIONS OF DIRECT (OR INDIRECT) PECUNIARY INTEREST

PRESENTATIONS/ DEPUTATIONS

MATTERS TO BE CONSIDERED

1. Approval of Minutes of Previous Meeting
2. Site Inspection Report – St. Therese of the Child Jesus Catholic School, Ward 10
3. Site Inspection Report – Barondale Public School and San Lorenzo Ruiz Catholic School, Ward 5
4. Site Inspection Requests
5. School Zone Safety (Kiss and Ride) Report – October 2011
6. Dismissal Report – October 2011
7. Proposed Site Plan SP-09/074 – 935 Eglinton Avenue, Ward 6
8. Traffic Safety Council and Peel District School Board Maintenance Meeting Minutes
9. Parking Enforcement in School Zones – October 2011
10. Site Inspection Report – Blessed Teresa of Calcutta Catholic School, Ward 3
11. Site Inspection Report – St. Gertrude Catholic School and Champlain Trail Public School, Ward 5
12. Site Inspection Report – St. Gertrude Catholic School and Champlain Trail Public School, Ward 5
13. Site Inspection Report – St. Alfred Catholic School and Brian W. Fleming Public School, Ward 3
14. Site Inspection Report – St. Alfred Catholic School and Brian W. Fleming Public School, Ward 3
15. Site Inspection Report – Churchill Meadows Public School and St. Faustina Catholic School, Ward 10
16. Additional Request for a Site Inspection

17. Additional School Zone Safety (Kiss and Ride) Report – October 2011
18. Additional Dismissal Report – October 2011
19. Email from Andy Bate, Traffic Operations with respect to Edenrose Public School
20. Invitation to Twenty – Second Annual Crossing Guard Appreciation Banquet/ Christmas Dinner

Date of Next Meeting – November 23, 2011 – 5:00 p.m.

OTHER BUSINESS

ADJOURNMENT

DRAFT

CALL TO ORDER - 5:00 p.m.

Peter Westbrook, Citizen Member requested that an email and invitation to the Twenty Second Annual Crossing Guard Appreciation Banquet/ Christmas Dinner be added to the agenda as item number 20. There was general consensus from the Committee that the item be added.

DECLARATIONS OF DIRECT (OR INDIRECT) PECUNIARY INTEREST

Nil

PRESENTATIONS/ DEPUTATIONS

Nil

MATTERS TO BE CONSIDERED

1. Approval of Minutes of Previous Meeting

Minutes of the Traffic Safety Council meeting held on September 28, 2011.

APPROVED (B. Swedak)

2. Site Inspection Report – St. Therese of the Child Jesus Catholic School, Ward 10

Site Inspection Report for the inspection conducted on October 6, 2011 to review the warrants for placing a Crossing Guard, at the intersection of Derry Road and Forest Park Drive, and to review pedestrian safety in the area of Forest Park Drive to Derry Road for students attending St. Therese of the Child Jesus Catholic School, 6930 Forest Park Drive.

RECOMMENDATION

1. That the request for a Crossing Guard at the intersection of Derry Road and Forest Park Drive for students attending St. Therese of the Child Jesus Catholic School, 6930 Forest Park Drive, be denied as the warrants have not been met.
2. That the Region of Peel be requested to re-paint the zebra markings around the intersection of Derry Road and Forest Park Drive for students attending St. Therese of the Child Jesus Catholic School, 6930 Forest Park Drive.

APPROVED (Councillor S. McFadden)

Recommendation- TSC-0161-2011

3. Site Inspection Report – Barondale Public School and San Lorenzo Ruiz Catholic School, Ward 5

Site Inspection Report for the inspection conducted on October 6, 2011 to review the warrants for placing a Crossing Guard, at the intersection of Barondale Drive and Wildwood Trail, for students attending Barondale Public School, 200 Barondale Drive and San Lorenzo Ruiz Catholic School, 100 Barondale Drive.

RECOMMENDATION

1. That the request for a crossing guard at the intersection of Wildwood Trail and Barondale Drive for students attending Barondale Public School, 200 Barondale Drive and San Lorenzo of Ruiz, 100 Barondale Drive, be denied as the warrants have not been met.
2. That the Transportation and Works Department be requested to conduct a stopping compliance study between the hours of 7:00 a.m. to 9:00 a.m. and 2:30 p.m. to 4:00 p.m. and report the findings to the Peel Regional Police for enforcement if warranted.
3. That the Principal of Barondale Public School be requested to ask the school's Peel Regional Police Liaison Officer to review bike safety with students attending Barondale Public School.
4. That the Site Inspection subcommittee of Traffic Safety Council be requested to re-inspect the intersection of Wildwood Trail and Barondale Drive in the Spring of 2012 for students attending Barondale Public School and San Lorenzo Ruiz Catholic School once the Transportation and Works Department has conducted the stopping compliance study and once the Peel Regional Police Liaison Officer at Barondale Public School has reviewed bike safety with students.

APPROVED – (Councillor F. Dale)

Recommendation- TSC-0162-2011

4. Requests for Site Inspections

- 4.1 That the email dated October 11, 2011 and the letter dated September 19, 2011 from Ms. McCann, the email dated October 17, 2011 from Ms. Gallivan and the letter from Sue Lawton, Trustee, requesting a site inspection to review the warrants of placing a crossing guard at the intersection of Burnhamthorpe Road and Creditview Road/ Central Parkway and to review pedestrian safety along the school walking route from the area of Burnhamthorpe Road and Creditview Road to Queenston Drive Public School for students attending Queenston Drive Public School, 3520 Queenston Drive, be received and referred to the Site Inspection subcommittee of Traffic Safety Council.

RECEIVED/ REFERRED – (L. Goegan)

Recommendation - TSC-0163-2011

- 4.2 That the email dated September 28, 2011 from Mr. Suess requesting a site inspection to review pedestrian safety along Central Parkway for students attending Father Michael Goetz Secondary School, 330 Central Parkway West, be received and referred to the Peel Regional Police as the outlined in the email from Mr. Suess fall under Police jurisdiction.

RECEIVED/ REFERRED – (L. Goegan)

Recommendation - TSC-0164-2011

5. School Zone Safety (Kiss and Ride) Report – October 2011

RECOMMENDATION

That the School Zone Safety (Kiss and Ride) Report, for the month of October 2011, be received.

RECEIVED – (D. Raakman)

Recommendation - TSC-0165-2011

The following recommendations emanated from the School Zone Safety (Kiss and Ride) Report for the month of October 2011:

**October 4, 2011**

**St. Marcellinus Catholic Secondary School (Ward 5)**

**Recommendation:**

1. That Peel Regional Police be requested to enforce traffic infractions in the vicinity of St. Marcellinus Catholic Secondary School, 730 Courtney Park Drive West, between the hours of 7:50 a.m. and 8:20 a.m.
2. That the Principal of St. Marcellinus Catholic Secondary School be requested to do the following:
  - a. Request that any deliveries to the school be made after the school entrance period.
  - b. Encourage parents to exit the school property via Spinnikar Crescent unless vehicles intend to travel east along Courtney Park Drive.
  - c. Encourage students to walk to school or take public transit to reduce traffic on school property.
3. That the Transportation and Works Department be requested to review the following at St. Marcellinus Catholic Secondary School:
  - a. Review the feasibility of installing No U-Turn signs on the medians on Spinnikar Road, and Courtney Park Drive in the vicinity of the school.
  - b. Review that the No U-turn zones are properly marked in the vicinity of the school.

APPROVED – (D. Raakman)

Recommendation - TSC-0166-2011



**October 19, 2011****Blessed Teresa of Calcutta**

No recommendations emanated from this School Zone Safety (Kiss and Ride) inspection as the School Zone Safety (Kiss and Ride) functions well.

**October 19, 2011****Divine Mercy Catholic School****Recommendation:**

1. That Parking Enforcement be requested to enforce parking infractions between 8:00 a.m. and 8:45 a.m. in front of Divine Mercy Catholic School, 2840 Duncairn Drive.
2. That the Principal of Divine Mercy Catholic School be requested to provide education to parents with respect to the proper use of the School Zone Safety (Kiss and Ride).

**APPROVED** – (D. Raakman)

Recommendation - TSC-0167-2011

6. **Dismissal Report – October 2011**

**RECOMMENDATION**

That the Dismissal Report for the month of October 2011 be received for information.

**RECEIVED** – (B. Swedak)

Recommendation - TSC-0187-2011

The following recommendations emanated from the Dismissal Report for the month of October 2011:

**October 4, 2011****St. Francis of Assisi Catholic School****Recommendation:**

That Parking Enforcement be requested to enforce the parking infractions in front of St. Francis of Assisi Catholic School, 2480 Thorne Lodge Drive, between 2:50 p.m. and 3:10 p.m.

**APPROVED** – (B. Swedak)

Recommendation - TSC-0168-2011

**October 7, 2011****St. Therese of the Child Jesus Catholic School****Recommendation:**

That Parking Enforcement be requested to enforce the parking infractions in front of St. Therese of the Child Jesus Catholic School, 6930 Forest Park Drive between 3:30 p.m. and 3:50 p.m.

**APPROVED** – (B. Swedak)

Recommendation - TSC-0169-2011

**October 7, 2011****Devine Mercy Catholic School****Recommendation:**

That Parking Enforcement be requested to enforce the parking infractions in front of Devine Mercy Catholic School, 2840 Duncairn Drive, between 2:45 p.m. and 3:10 p.m.

**APPROVED** – (B. Swedak)

Recommendation - TSC-0170-2011

**October 18, 2011****Blessed Teresa of Calcutta Catholic School**

Boris Swedak, Citizen Member noted that the Principal of Blessed Teresa of Calcutta Catholic School had agreed to the recommendation outlined in the Dismissal Report for October 2011.

**Recommendation:**

1. That Parking Enforcement be requested to enforce the parking infractions in front of Blessed Teresa of Calcutta Catholic School, 1120 Runningbrook Drive, between 2:45 p.m. and 3:10 p.m.
2. That the Principal of Blessed Teresa of Calcutta Catholic School be requested to:
  - a. Instruct staff to place safety cones along the crescent driveway to restrict access to busses only during the dismissal period.
  - b. To request that vehicles waiting to pick up students park on Runningbrook Drive or in the main parking lot during the dismissal period.

**APPROVED** – (B. Swedak)

Recommendation - TSC-0171-2011

**October 20, 2011**

**Champlain Trail Public School**

**Recommendation:**

1. That the Transportation and Works Department be requested to review the No Stopping signs posted along Esprit Crescent and along Ceremonial Drive, in front of Champlain Trail Public School, 895 Ceremonial Drive.
2. That Parking Enforcement be requested to enforce parking infractions along Ceremonial Drive, in front of the school, and along Esprit Crescent between 3:00 p.m. and 3:25 p.m.

**APPROVED** – (B. Swedak)

Recommendation - TSC-0172-2011

7. **Proposed Site Plan SP 09/074 – 935 Eglinton Avenue West (Ward 6)**

Report dated October 19, 2011 from the Site Plan Review Subcommittee with respect to the Proposed Site Plan, SP 09/074 to build a private school at 935 Eglinton Avenue West.

**RECOMMENDATION**

That the Commissioner of Planning and Building be advised that with respect to the Site Plan SP 09/ 074 - Proposed Private School at 935 Eglinton Avenue West, Ward 6, the Site Plan Review Subcommittee of Traffic Safety Council has reviewed the revised site plan submitted on September 30, 2011 and would recommend the following:

1. That the revised site plan SP 09/ 074 is unsatisfactory for the following reasons:
  - a. The School Zone Safety (Kiss and Ride) drop-off and pick-up lane identified on the site plan is located in a two way driveway. The Traffic Safety Council requires that the driveway be made one-way to accommodate the School Zone Safety (Kiss and Ride) layout in accordance with the approved template. Further, the required lane markings need to be identified on the site plan and the on-site traffic circulation needs to be confirmed and appropriately signage must be provided.
  - b. The on-site traffic circulation is a concern in respect to the manner in which the School Zone Safety (Kiss and Ride) layout will function and issues such as access to the school and operation of the Kiss and Ride program need to be detailed.
  - c. The Traffic Impact Study prepared in support of the site plan does not appear to make reference to the School Zone Safety (Kiss and Ride) drop-off and pick-up lane and the manner in which the site will accommodate the stacking of vehicles associated with drop-off and pick-up lane. The Traffic Engineer is requested to provide specific statements in regards to the impact of the proposed School Zone Safety (Kiss and Ride) layout.

2. That the Legislative Coordinator arrange a meeting with the Architect and representatives of the Traffic Safety Council to discuss the traffic concerns which may arise due to school drop off and dismissal operations.
3. That the Site Plan Review Subcommittee of Traffic Safety Council be provided with the completed Site Plan Review Subcommittee's Questionnaire for their review.

APPROVED – (D. Raakman)

Recommendation - TSC-0173-2011

8. Traffic Safety Council and Peel District School Board Maintenance Meeting Minutes

Minutes of the meeting between representatives of Traffic Safety Council and the Peel District School Board regarding maintenance issues at various schools on October 11, 2011.

RECEIVED – (B. Sweda)

Recommendation - TSC-174-2011

9. Parking Enforcement in School Zones – June 2011

Memorandum from the Manager of Parking Enforcement reporting on parking enforcement in school zones for the month of June 2011.

RECOMMENDATION:

That the memorandum from the Manager of Parking Enforcement reporting on parking enforcement in school zones for the month of June 2011 be received.

RECEIVED – (E. Lethbridge)

Recommendation - TSC-0175-2011

10. Site Inspection Report – Blessed Teresa of Calcutta Catholic School, Ward 3

Site Inspection Report for the inspection conducted on September 29, 2011 to review the warrants of placing a Crossing Guard at the intersection of Tomken Road and Runningbrook Drive, for students attending Blessed Teresa of Calcutta Catholic School, 1120 Runningbrook Road.

RECOMMENDATION

1. That the request for a Crossing Guard at the intersection of Tomken Road and Runningbrook Drive, for students attending Blessed Teresa of Calcutta Catholic School, 1120 Runningbrook Drive be denied as the warrants have not been met.
2. That the Transportation and Works Department be requested to review the feasibility of setting the traffic signal timing to a slower walking speed at the intersection of Tomken Road and Runningbrook Drive for students attending Blessed Teresa of Calcutta Catholic School.

APPROVED - (L. Goegan)

Recommendation - TSC-0176-2011

11. Site Inspection Report – St. Gertrude Catholic School and Champlain Trail Public School, Ward 5

Site Inspection Reports for the inspections conducted on September 15, 2011 and on October 18, 2011 to review the warrants of removing a Crossing Guard from the intersection of Bristol Road and Guildwood Way/ Shackleton Way for students attending St. Gertrude Catholic School, 815 Ceremonial Drive and Champlain Trail Public School, 895 Ceremonial Drive.

RECOMMENDATION

1. That the matter of the removal of the Crossing Guard at the intersection of Bristol Road and Guildwood Way/ Shackleton Way, be deferred until the fall of 2012 when the School Walking Routes Program will be implemented at St. Gertrude Catholic School, 815 Ceremonial Drive and Champlain Trail Public School, 895 Ceremonial Drive.
2. That once the School Walking Routes Program is implemented at St. Gertrude Catholic School and Champlain Trail Public School, in the fall of 2012, the Site Inspection Subcommittee of Traffic Safety Council be requested to re-inspect the intersection of Bristol Road and Guildwood Way/ Shackleton Way to review the warrants for removal of the Crossing Guard.

APPROVED - (L. Goegan)

Recommendation - TSC-0177-2011

12. Site Inspection Report – St. Gertrude Catholic School and Champlain Trail Public School, Ward 5

Site Inspection Report for the inspection conducted on October 20, 2011 to review the warrants of placing a Crossing Guard on the north east corner of the intersection of Bristol Road and Ceremonial Drive for students attending St. Gertrude Catholic School, 815 Ceremonial Drive and Champlain Trail Public School, 895 Ceremonial Drive.

It was noted that the start and dismissal times for St. Gertrude Catholic School and Champlain Trail Public School were at one time staggered by twenty minutes but this was changed due to integrated bussing. Discussion ensued with respect to how staggering the start and dismissal times would positively impact traffic flow in the area.

RECOMMENDATION

1. That the request for a Crossing Guard at the north east corner of Bristol Road and Ceremonial Drive for students attending St. Gertrude Catholic School, 815 Ceremonial Drive and Champlain Trail Public School, 895 Ceremonial Drive be denied as the warrants have not been met.
2. That the Principals of St. Gertrude Catholic School and Champlain Trail Public School be requested to remind parents and students to cross Bristol Road and Ceremonial Drive with the Crossing Guard.
3. That the Dufferin Peel Catholic District School Board and the Peel District School Board be requested to review the entry and dismissal times for St. Gertrude Catholic School and Champlain Trail Public School and consider separating the entry and dismissal times by twenty minutes to reduce traffic congestion in the area.

APPROVED – (H. Relf)

Recommendation - TSC-0178-2011

13. Site Inspection Report – St. Alfred Catholic School and Brian W. Fleming Public School, Ward 3

Site Inspection Report for the inspection conducted on October 21, 2011 to review the warrants for placing a Crossing Guard at Fieldgate Drive and Cardross Road, for students attending St. Alfred Catholic School, 3341 Havenwood Drive and Brian W. Fleming Public School, 3255 Havenwood Drive.

RECOMMENDATION

That the request for a Crossing Guard at Fieldgate Drive and Cardross Road, for students attending St. Alfred Catholic School, 3341 Havenwood Drive and Brian W. Fleming Public School, 3255 Havenwood Drive, be denied as the warrants have not been met.

APPROVED – (Councillor S. McFadden)

Recommendation - TSC-0179-2011

14. Site Inspection Report – St. Alfred Catholic School and Brian W. Fleming Public School, Ward 3

Site Inspection Report for the inspection conducted on October 21, 2011 to review the warrants for placing a Crossing Guard at Havenwood Drive and Fieldgate Drive, for students attending St. Alfred Catholic School, 3341 Havenwood Drive and Brian W. Fleming Public School, 3255 Havenwood Drive.

RECOMMENDATION

That the request for a Crossing Guard at Havenwood Drive and Fieldgate Drive, for students attending St. Alfred Catholic School, 3341 Havenwood Drive and Brian W. Fleming Public School, 3255 Havenwood Drive, be denied as the warrants have not been met.

APPROVED – (Councillor S. McFadden)

Recommendation - TSC-0180-2011

15. Site Inspection Report – Churchill Meadows Public School and St. Faustina Catholic School, Ward 10

Site Inspection Report for the inspection conducted on October 25, 2011 to review the warrants for placing a Crossing Guard at the intersection of Churchill Meadows Boulevard and Lacman Trail for students attending Churchill Meadows Public School, 3310 McDowell Drive and St. Faustina Catholic School, 3420 McDowell Drive.

RECOMMENDATION

1. That the request for a Crossing Guard at the intersection of Lacman Trail and Churchill Meadows Boulevard, for students attending Churchill Meadows Public School, 3310 McDowell Drive and St. Faustina Catholic School, 3420 McDowell Drive, be denied as the warrants have not been met and the All Way Stop at the intersection of Churchill Meadows Boulevard and McDowell Drive provides protection for students crossing.

2. That the Principals of Churchill Meadows Public School and St. Faustina Catholic School be requested to direct parents and students to cross Churchill Meadows Boulevard at the All Way Stop located at Churchill Meadows Boulevard and McDowell Drive.

APPROVED – (Councillor S. McFadden)  
Recommendation - TSC-0181-2011

16. Additional Request for a Site Inspection

That the letter dated October 24, 2011 from Sue Lawton, Peel District School Board Trustee, Wards 3 and 4, to the Traffic Safety Council, requesting a site inspection to review pedestrian safety along the school walking route from the area of Burnhamthorpe Road and Creditview Road to Queenston Drive Public School, 3520 Queenston Drive be received and referred to the Site Inspection Subcommittee of Traffic Safety Council.

RECEIVED/ REFERRED – (P. Westbrook)  
Recommendation - TSC-0164-2011

17. Additional School Zone Safety (Kiss and Ride) Report – October 2011

RECOMMENDATION

That the Additional School Zone Safety (Kiss and Ride) Report, for the month of October 2011, be received.

RECEIVED – (D. Raakman)  
Recommendation - TSC-0165-2011

The following recommendations emanated from the Additional School Zone Safety (Kiss and Ride) Report for the month of October 2011:

**October 21, 2011**

**Ruth Thompson Middle School**

David Raakman, Citizen Member, asked that the recommendation be amended to request that the Peel Regional Police conduct a multi day blitz to enforce traffic infractions at Ruth Thomson Middle School. Discussion ensued with respect to the implementation of possible solutions to improve morning drop off procedures at the school. David Brown, Chair, noted that consistent monitoring will help improved the situation.



Recommendation:

1. That the Peel Regional Police be requested to conduct a multi day blitz to enforce traffic violations on Freshwater Drive in the vicinity of Ruth Thompson Middle School, 5605 Freshwater Drive, between 8:00 a.m. and 8:20 a.m.
2. That Parking Enforcement be requested to conduct a multi day blitz to enforce parking infractions along Freshwater Drive and Deepwood Heights in the vicinity of Ruth Thompson Middle School, 5605 Freshwater Drive, between 8:00 a.m. and 8:20 a.m.

APPROVED – (D. Raakman)

Recommendation - TSC-0182-2011

**October 24, 2011**

**Brian W. Fleming Public School**

Recommendation:

That should the newly established School Zone Safety (Kiss and Ride) lane be utilized, the Peel District School Board be requested to do the following at Brian W. Fleming Public School, 3255 Havenwood Drive:

- a. Provide Traffic Safety Council with a site plan of the reconfigured School Zone Safety (Kiss and Ride) Lane and Bus Drop off Lane at Brian W. Fleming for Traffic Safety Council's review.
- b. That appropriate signage be installed in the School Zone Safety (Kiss and Ride) Lane including One-Way signs, Entrance and Exit signs and Stop Signs.
- c. That the newly established Bus Drop Off Lane be painted appropriately and that the appropriate signage be installed.
- d. That the Turning Circle in the newly established Bus Drop Off Lane be modified to accommodate busses and that the modifications include widening the turning circle and moving the northerly curb out by a minimum of 1.5 meters to the north to enable school busses to negotiate the circle.
- e. That the newly established School Zone Safety (Kiss and Ride) Lane be painted with the standard two-lane configuration.

APPROVED – (D. Raakman)

Recommendation - TSC-0183-2011

**October 25, 2011****Thomas Street Middle School****Recommendation:**

1. That the Principal of Thomas Street Middle School, 2640 Thomas Street, be requested to remind parents who drive students to school, that in the interest of student safety, students should be dropped off prior to the arrival bell as staff are on duty to monitor student safety at the School Zone Safety (Kiss and Ride) lanes prior to the bell.
2. That the School Zone Safety (Kiss and Ride) Subcommittee of Traffic Safety Council be requested to re-inspect the School Zones Safety (Kiss and Ride) functions at Thomas Street Middle School, on a rainy day.

**APPROVED** – (D. Raakman)

Recommendation - TSC-0184-2011

**October 25, 2011****St. Gertrude Catholic School****Recommendation:**

That the Legislative Coordinator be requested to extend an invitation to the Principal of St. Gertrude Catholic School, 815 Ceremonial Drive, requesting that the school become involved in the School Walking Routes Program.

**APPROVED** – (D. Raakman)

Recommendation - TSC-0185-2011

**October 25, 2011****Champlain Trail Public School****Recommendation:**

1. That the Legislative Coordinator be requested to extend an invitation to the Principal of Champlain Trail Public School, 895 Ceremonial Drive, requesting that the school become involved with the School Walking Routes Program.
2. That the Principal of Champlain Trail Public School be requested to remind parents and students to cross Ceremonial Drive with the Crossing Guard located to the south of the school's driveway.

**APPROVED** – (D. Raakman)

Recommendation - TSC-0186-2011

18. Additional Dismissal Report – October 2011

RECOMMENDATION

That the Additional Dismissal Report, for the month of October 2011, be received.

RECEIVED – (B. Swedak)

Recommendation - TSC-0187-2011

The following recommendations emanated from the Additional Dismissal Report for the month of October 2011:

October 24, 2011

Thomas Street Middle School

Discussion ensued with respect to the feasibility of installing a No Left Turn sign prohibiting left turns on to the school property.

Recommendation:

That the Transportation and Works Department be requested to review the feasibility of installing a sign at the entrance/ exit of Thomas Street Middle School, 2640 Thomas Street, prohibiting left turns on to school property between 8:10 a.m. and 8:40 a.m. and 2:30 p.m. and 3:00 p.m.

APPROVED – (B. Swedak)

Recommendation - TSC-0188-2011

19. Email from Andy Bate, Traffic Operations with respect to Edenrose Public School

Email dated October 26, 2011 from Andy Bate, Supervisor, Traffic Operations with respect to traffic congestion at Edenrose Public School, 1342 Edenrose Street.

RECOMMENDATION

That the email dated October 26, 2011 from Andy Bate, Supervisor, Traffic Operations, with respect to traffic congestion at Edenrose Public School, 1342 Edenrose Street, be received and referred to the School Zone Safety (Kiss and Ride) and Dismissal Subcommittees of Traffic Safety Council.

RECEIVED/ REFERRED – (Councillor F. Dale)

Recommendation - TSC-0189-2011

20. Invitation to Twenty – Second Annual Crossing Guard Appreciation Banquet/ Christmas Dinner

Sheelagh Duffin, Crossing Guard Supervisor outlined the event and extended the invitation for three Traffic Safety Council Citizen Members to attend the Banquet. Louise Gogan, Peter Westbrook and David Raakman accepted the invitation.

Date of Next Meeting– November 23, 2011 – 5:00 p.m.

### OTHER BUSINESS

Peter Westbrook, Citizen Member suggested that Traffic Safety Council develop an information pamphlet regarding how to safely cross the road which could be handed out to parents and students. Sheelagh Duffin, Crossing Guard Supervisor suggested that this information could be communicated through a Traffic Safety Times edition. Andy Bate, Supervisor, Traffic Operations suggested that the information could also be included in the Road Safety Handbook.

### RECOMMENDATION

That the matter regarding the creation of an issue of the Traffic Safety Times which would outline how to safely cross the road be referred to the Public Information Subcommittee of Traffic Safety Council.

APPROVED – (D. Raakman)  
Recommendation - TSC-0190-2011

ADJOURNMENT – 6:50 p.m.  
(D. Raakman)

# Site Inspection Report - Traffic Safety Council

2

**Observers**

Complete All Questions

File Number:

RT.10. Divine Mercy Catholic School

File Number:

RT.10.

Ward

9

Traffic Safety Council

NOV 23 2011

Observed By:

D. Fryers

D. Pest

D. Raakman

B. Swedak

Date of Inspection:

2011 10 27

Inspection Time:

8:00 AM

3:00 PM

Requested By:

Ward Councillor

Prepared By:

D. Fryers

Request For:

CrossingGuard

Weather Conditions: ☒ Dry ☐ Sunny ☐ Rain ☐ Snow ☐ Other:**Site**

School:

Divine Mercy Catholic School

Address:

2840 Duncairn Drive

School Times:

8:30

AM 3:00

PM

Student Population:

No. of School Buses:

School:

Address:

School Times:

AM

PM

Student Population:

No. of School Buses:

School:

Address:

School Times:

AM

PM

Student Population:

No. of School Buses:

Location: (Please identify the location with reference to nearest intersection. Indicate nearest school and address.)

**Duncairn Drive & Ruperts Gate**Type of Crossing: ☐ 4 Way Intersection ☒ 3 Way Intersection ☐ Midblock (i.e., not at Intersection)Type of Control: ☐ Traffic Lights ☐ Yield Signs ☐ No Control☐ Stop Signs (Traffic is stopped on one street only) ☐ All Way Stop (Traffic is stopped in all directions)**Part 1 Site Conditions**

School Signs:

☒ School Area Signs☐ School crossing Signs☐ Parking/Stopping Prohibition

Posted Speed Limit:

☒ 40 km/hr☐ 50 km/hr☐ 60 km/hr☐ Other

km/hr

Visibility of Crossing Pedestrians:

☐ Poor☐ Fair☒ Good

Sight Obstructions:

☐ Hedges☐ Trees☐ Fences☐ Bus Shelter☐ Newspaper Boxes☐ Other (Specify)

Road Grade:

☒ Flat☐ Incline☐ Decline

Road Geometrics:

☒ Straight☐ Curved

Road Width:

☐ Feet☐ Metres

Curb to Curb: 36

☒ Feet☐ Metres

Curb to Median:

☐ Feet☐ Metres

Road Conditions:

☒ Dry ☐ Wet☐ Snow Covered☐ Ice

Sidewalks:

☐ Not Present☒ North☒ South☒ East☒ West

Proximity to School:

☐ In Front of☒ Within 50☐ Feet☒ Metres

Route Survey:

☐ Shopping Area☐ Construction☐ Driveway☐ Other (Specify)

Road Geometrics:

☐ Transit Bus Stop☐ Underpass☐ Parked Vehicles Within☐ Feet☐ Metres

# 2a Warrant Survey

Location:

Check Appropriate Box For The Access Required

Duncairn Drive & Ruperts Gate

SAFE GAP TIME (W/3.5+4) = 14 SEC.

## Morning Intervals

No.

Peds.: Time:

Gaps:

		West Leg	# of Gaps	# of Conflicts
1	8:00-8:05	/56//52/18/////17///	9	
	8:05-8:10	50,32///29/////15///36,21/////,,//	12	
	8:10-8:15	47/19/32/////,,/16///19///16/15,15/18/	6	
3	8:15-8:20	////,///15/26/////,,//,///21/19///15//	6	
	8:20-8:25	//// (x13)		
	8:25-8:30	//// (x8) //15/////,,//,////,////	1	

## Afternoon Intervals

No./

Peds.: Time:

Gaps:

1	3:00-3:05	34/////15,33/21/////,,//15/////15///	8	
5	3:05-3:10	////,////,///16/////,,//,///32/////,,//,////	3	
	3:10-3:15	////15/////20/28/23,38///25,53	13	
	3:15-3:20	52//23//26,42//26/////	11	
	3:20-3:25	42/16/////47/////59/24/////,,//	12	
	3:25-3:30			

## Comments/Conflicts

Parents were observed picking up and dropping students off in front of the school. Traffic was mostly school related. No conflicts were observed. A number of students crossing on the south side were crossing to parents cars. Driver's were courteous to crossing students.

## Recommendations

1. That the request for a Crossing Guard at the intersection of Duncairn Drive and Ruperts Gate for students attending Divine Mercy Catholic School, 2840 Duncairn Drive, be denied as the warrants have not been met. 2. That Parking Enforcement be requested to enforce parking infractions in the vicinity of Divine Mercy Catholic School, 2840 Duncairn Drive between 2:45 p.m. and 3:15 p.m.

## Observations

A) Volume of Traffic: (See Intersection Plan)

B) Number of Crossing Pedestrians

☐ Heavy ☐ Light ☒ Intermittent

4 AM 6 PM

# Warrant Survey

Check Appropriate Box For The Access Required

2b

Location:

Duncairn Drive & Ruperts Gate

SAFE GAP TIME (W/3.5+4) = 14 SEC.

## Morning Intervals

No.

Peds.: Time:

Gaps:

			# of Gaps	# of Conflicts
	South Leg			
8:00-8:05	83/,/,/,/,/,/60		10	
8:05-8:10	//60///29/19/32///		10	
8:10-8:15	27,20//18/53///33/50/////18		10	
2 8:15-8:20	//20/////15,14,20/////27,15///20		10	
4 8:20-8:25	/26///28///21/////18/////20///21//		9	
11 8:25-8:30	/14,19/////153/////130,17///14///		10	

## Afternoon Intervals

No./

Peds.: Time:

Gaps:

17 3:00-3:05	/21/18/32/39//21,36///,/	11
15 3:05-3:10	57/////21,34,49,39///	14
5 3:10-3:15	32/20,20,26///69,28,68	18
3:15-3:20	/33,16	10
3:20-3:25	68/18/26//	15
3:25-3:30		

## Comments/Conflicts

Parents were observed picking up and dropping students off in front of the school. Traffic was mostly school related. No conflicts were observed. A number of students crossing on the south side were crossing to parents cars. Driver's were courteous to crossing students.

## Recommendations

1. That the request for a Crossing Guard at the intersection of Duncairn Drive and Ruperts Gate for students attending Divine Mercy Catholic School, 2840 Duncairn Drive, be denied as the warrants have not been met. 2. That Parking Enforcement be requested to enforce parking infractions in the vicinity of Divine Mercy Catholic School, 2840 Duncairn Drive between 2:45 p.m. and 3:15 p.m.

## Observations

A) Volume of Traffic: (See Intersection Plan)

B) Number of Crossing Pedestrians

☐ Heavy ☒ Light ☐ Intermittent

17 AM 37 PM

2c

THURS. OCT. 27 @ 8<sup>00</sup> \$ 3<sup>00</sup> @ DUNCAIRN DR \$

**Laura Wilson** RUPERTS GATE

---

**From:** Pat Saito  
**Sent:** October 3, 2011 11:51 AM  
**To:** Laura Wilson; Yelena Adamopoulos; Parking Enforcement  
**Cc:** Sheena Rodda; Luisa Morrone  
**Subject:** Action: traffic safety on Duncairn dr and Ruperts Gate

**Follow Up Flag:** Follow up  
**Flag Status:** Flagged

**Categories:** TSC

Hello,

Further to the correspondence below, Councillor Saito would appreciate staff's assistance with the following actions:

Traffic Safety Council to conduct another site visit to see if they can suggest anything that might work.

Traffic Operations staff to see if we can do anything physically.

Parking Control to put this location on their enforcement list for the illegal parking.

Thank you kindly,  
Michelle  
Administrative Assistant  
Ward 9 Councillor Pat Saito

Patricia (Pat) Saito  
Councillor Ward 9  
City of Mississauga/Region of Peel  
Tel: 905-896-5900  
Fax: 905-896-5863  
[pat.saito@mississauga.ca](mailto:pat.saito@mississauga.ca)

Sign up for the Ward9 e-Newsletter at [www.ward9.ca](http://www.ward9.ca)

Check out Ward 9 events on you tube: <http://www.youtube.com/user/Councillor9>

Follow Councillor Pat Saito on Facebook: <http://www.facebook.com/people/Councillor-Pat-Saito/100001664768300>

"This e-mail may not be forwarded to anyone for any reason without express written permission of the author."

---

**Subject:** traffic safety on Duncairn dr and Ruperts Gate (Divine Mercy School area)

Yesterday morning (Sept. 28, 2011) my 7 year old daughter and myself were inches away from being hit by a car as we crossed at a designated cross walk area on Duncairn dr and Ruperts gate. I have contacted the police, and given their limited resources they cannot guarantee a police presence.

Over one year ago my neighbor, advocated to have cross walk lines painted on our rd. (Duncairn dr and Ruperts Gate). In the beginning, safety had improved. However, the purpose of the cross walk seems to have been lost. Especially with school traffic.

Here are the concerns:

- parents parking in no parking zones (thus making pedestrians difficult to see)
- parents driving carelessly on duncairn dr, and not stopping to let pedestrians cross at stop sign areas

I am asking you to look at the traffic safety on Duncairn dr. My daughter was very lucky yesterday. My children have had too many close calls as they walk to school. If these issues are not addressed it is only a matter of time



before a pedestrian is injured. I am not sure what options are available to address these issues. We are in your hands and hope for a productive and safe outcome.

2d

# 2e Site Inspection Report - Traffic Safety Council

NOVEMBER 2009

## Observers

Complete All Questions

File Number:

RT.10. Divine Mercy Catholic School

File Number:

RT.10.

Ward

9

Observed By:

Louise Goegan

Ivan Sack

S. Duffin

D. Pest

Date of Inspection:

2009 11 12

Inspection Time:

8:00 AM

3:00 PM

Requested By:

Student Transportation

Prepared By:

L/ Goegan

Request For:

Request for Crossing Guard

Weather Conditions: ☒ Dry ☐ Sunny ☐ Rain ☐ Snow ☐ Other:

## Site

School:

Divine Mercy Catholic School

Address:

2840 Duncairn Drive

School Times:

8:30

AM 3:00

PM

Student Population:

No. of School Buses:

School:

Address:

School Times:

AM

PM

Student Population:

No. of School Buses:

School:

Address:

School Times:

AM

PM

Student Population:

No. of School Buses:

Location: (Please identify the location with reference to nearest intersection. Indicate nearest school and address.)

Duncairn Drive & Rupert's Gate Drive

Type of Crossing: ☐ 4 Way Intersection ☒ 3 Way Intersection ☐ Midblock (i.e., not at Intersection)

Type of Control: ☐ Traffic Lights ☐ Yield Signs ☐ No Control

☐ Stop Signs (Traffic is stopped on one street only) ☒ All Way Stop (Traffic is stopped in all directions)

## Part 1 Site Conditions

School Signs:

☒ School Area Signs

☐ School crossing Signs

☐ Parking/Stopping Prohibition

Posted Speed Limit:

☒ 40 km/hr

☐ 50 km/hr

☐ 60 km/hr

☐ Other

km/hr

Visibility of Crossing Pedestrians:

☐ Poor

☐ Fair

☒ Good

Sight Obstructions:

☐ Hedges

☐ Trees

☐ Fences

☐ Bus Shelter

☐ Newspaper Boxes

☐ Other (Specify)

Road Grade:

☒ Flat

☐ Incline

☐ Decline

Road Geometrics:

☒ Straight

☐ Curved

Road Width: 37

☒ Feet

☐ Metres

Curb to Curb:

☐ Feet

☐ Metres

Curb to Median:

☐ Feet

☐ Metres

Road Conditions:

☒ Dry

☐ Wet

☐ Snow Covered

☐ Ice

Sidewalks:

☐ Not Present

☒ North

☒ South

☒ East

☒ West

Proximity to School:

☐ In Front of

☒ Within 3

☐ Feet

☒ Metres

Route Survey:

☐ Shopping Area

☐ Construction

☐ Driveway

☐ Other (Specify)

Road Geometrics:

☐ Transit Bus Stop

☐ Underpass

☐ Parked Vehicles Within

☐ Feet

☐ Metres

# Warrant Survey

Check Appropriate Box For The Access Required

2f

Location:

Duncairn Drive & Rupert's Gate Drive

SAFE GAP TIME (W/3.5+4) = 15 SEC.

## Morning Intervals

No.

Peds.: Time:

Gaps:

		# of Gaps	# of Conflicts
	8:00-8:05 // 29 / 27 30 20 // 43	7	
	8:05-8:10 ///26 // 52 /// 19 38 18	8	
	8:10-8:15 21 / // 17 / 16 /	3	
	8:15-8:20 31 /// // // // // // //	2	
2	8:20-8:25 /// // // // // // // // // // // 22 ///	1	
1	8:25-8:30 /// // // // // // // // // // //	0	
	8:30-8:35 /// // // // // // // // // // //	0	
	8:35-8:40 ///,///		
	8:40-8:45		
	8:45-8:50		
	8:50-8:55		
	8:55-9:00		

## Afternoon Intervals

No./

Peds.: Time:

Gaps:

2	3:00-3:05 20 /// // // // // // // // // // //	1	
	3:05-3:10 /// // // // 15 // 26 /// 112 /	9	
	3:10-3:15 42 // 34 /// 34 /// 44 / 29 31 /	11	
	3:15-3:20 36 /// 26 15 / 33 // 19 / 27	13	
	3:20-3:25		
	3:25-3:30		

## Comments/Conflicts

Most traffic school related. All way stop provides protection for crossing students. No cnflicts observed. No streets on North side between the school & Glen Erin Drive, potentially only a dozen houses on North side that could have students needing to cross, only 1 house that actually had 2 students that crossed. Crossing Guard at Glen Erin/Duncairn if they live north of the intersection.

## Recommendations

1. That the request for a Crossing Guard at the intersection of Duncairn Drive and Ruperts Gate Drive for the students attending Divine Mercy Catholic School, 2840 Duncairn Drive be denied as the warrants have not been met.
2. That the Principal at Divine Mercy Catholic School be requested to remind students who live north of Duncairn Drive to cross with the Crossing Guard at Glen Erin Drive and Duncairn Drive.

## Observations

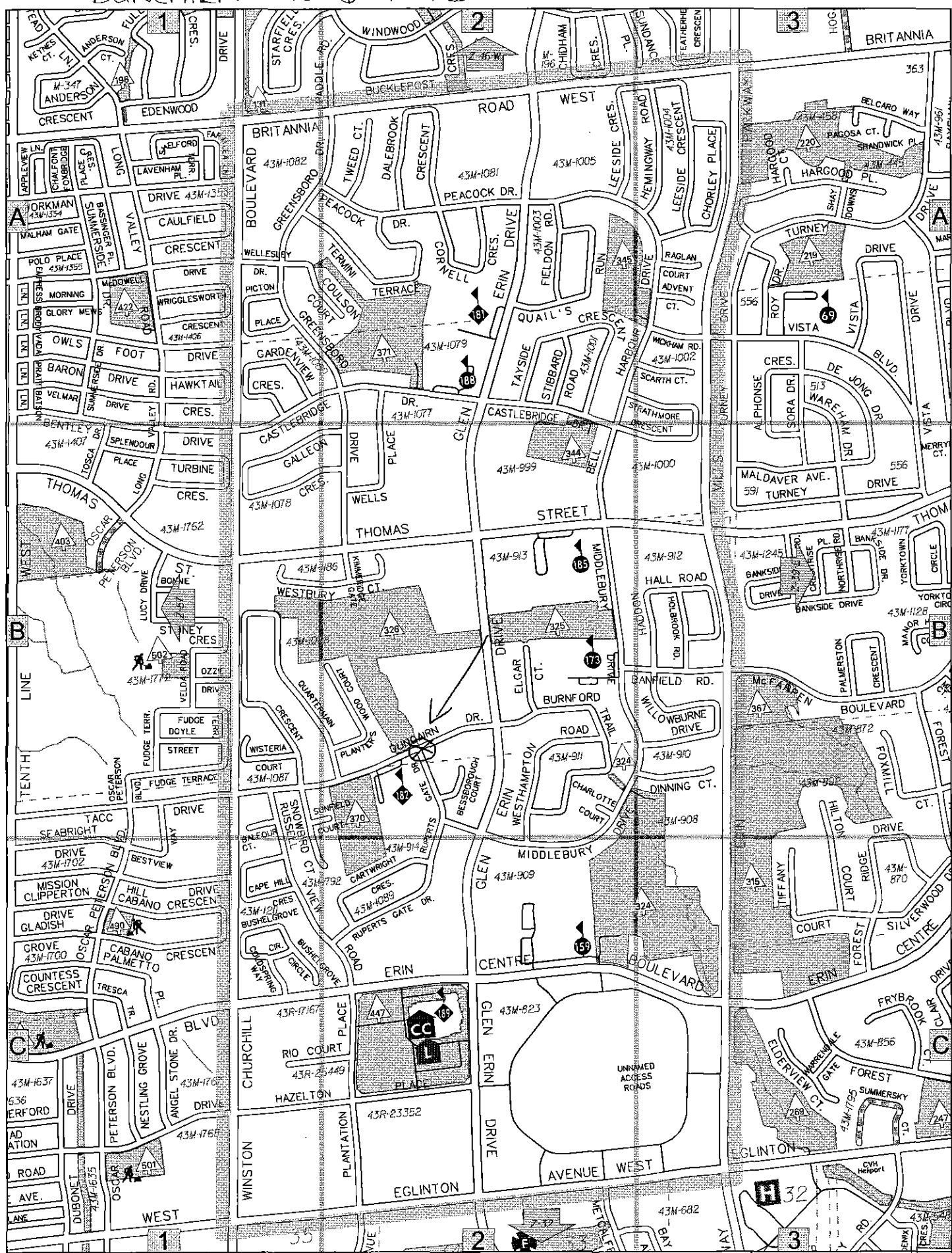
A) Volume of Traffic: (See Intersection Plan)

B) Number of Crossing Pedestrians

☐ Heavy ☐ Light ☒ Intermittent

3 AM 2 PM

DUNCAIRN DR & RUPERT'S GATE



Z-39W

2011/09/01

# Site Inspection Report - Traffic Safety Council

3

## Observers

Complete All Questions

File Number:

RT.10. Artesian Drive Public School

File Number:

RT.10.

Ward

8

Traffic Safety Council

NOV 23 2011

Observed By:

S. Duffin

D. Pest

D. Fryers

E. Lethbridge

B. Swedak (PM)

Date of Inspection:

2011 11 03

Inspection Time:

8:00 AM

3:00 PM

Requested By:

Resident

Prepared By:

E. Lethbridge/ D. Pest

Request For:

Place a crossing guard

Weather Conditions: ☒ Dry ☐ Sunny ☐ Rain ☐ Snow ☐ Other:

## Site

School:

Artesian Drive Public School

Address:

3325 Artesian Drive L5M 7J8

School Times:

8:30

AM 3:00

PM

Student Population:

No. of School Buses:

School:

Address:

School Times:

AM

PM

Student Population:

No. of School Buses:

School:

Address:

School Times:

AM

PM

Student Population:

No. of School Buses:

Location: (Please identify the location with reference to nearest intersection. Indicate nearest school and address.)

Artesian Dr./ Fullwell Road

Type of Crossing: ☐ 4 Way Intersection ☒ 3 Way Intersection ☐ Midblock (i.e., not at Intersection)

Type of Control: ☐ Traffic Lights ☐ Yield Signs ☐ No Control

☒ Stop Signs (Traffic is stopped on one street only) ☐ All Way Stop (Traffic is stopped in all directions)

## Part 1 Site Conditions

School Signs:

☒ School Area Signs

☐ School crossing Signs

☐ Parking/Stopping Prohibition

Posted Speed Limit:

☒ 40 km/hr

☐ 50 km/hr

☐ 60 km/hr

☐ Other

km/hr

Visibility of Crossing Pedestrians:

☐ Poor

☐ Fair

☒ Good

Sight Obstructions:

☐ Hedges

☐ Trees

☐ Fences

☐ Bus Shelter

☐ Newspaper Boxes

☐ Other (Specify)

Road Grade:

☒ Flat

☐ Incline

☐ Decline

Road Geometrics:

☒ Straight

☐ Curved

Road Width:

☐ Feet

☐ Metres

Curb to Curb: 38

☒ Feet

☐ Metres

Curb to Median:

☐ Feet

☐ Metres

Road Conditions:

☒ Dry

☐ Wet

☐ Snow Covered

☐ Ice

Sidewalks:

☐ Not Present

☒ North

☒ South

☐ East

☒ West

Proximity to School:

☒ In Front of

☐ Within

☐ Feet

☐ Metres

Route Survey:

☐ Shopping Area

☐ Construction

☐ Driveway

☐ Other (Specify)

Road Geometrics:

☐ Transit Bus Stop

☐ Underpass

☐ Parked Vehicles Within

☐ Feet

☐ Metres

# 3a Warrant Survey

Location:

Check Appropriate Box For The Access Required

Artesian Dr./ Fullwell Road

SAFE GAP TIME (W/3.5+4) = 15 SEC.

## Morning Intervals

No.  
Peds.: Time: Gaps:

		# of Gaps	# of Conflicts
8:00-8:05	/,24,17,35//25,15,15,/15/	9	
8:05-8:10	//33///16/18///16,20,24	8	
8:10-8:15	29,36///16//15,17//37///24,44///	14	
8:15-8:20	/30///18////,30///15////,///24////,///	7	
8:20-8:25	////,////,///17////,////,////,////18///24///	2	
8:25-8:30	21,21///15///15/31,15//34//18/15	12	
8:30-8:35			
8:35-8:40			
8:40-8:45			

## Afternoon Intervals

No./  
Peds.: Time: Gaps:

3:00-3:05	//32/16/16,50/20//19/25,18	13	
3:05-3:10	////,////,////,////,18////,////,////,////,////	1	
3:10-3:15	////,127/23///22//15///16///22	8	
3:15-3:20	31////,////29,30,48,21,18/15//53	16	
3:20-3:25			
3:25-3:30			
3:30-3:35			

## Comments/Conflicts

Most students crossed Artesian Drive to or from vehicles (these students were not counted in pedestrian numbers). The School Zone Safety (Kiss and Ride) is under utilized in the morning. Traffic is school related. In the afternoon numerous vehicles use the school Exit Driveway to access the school parking lot causing an unsafe situation and congestion in the parking lot on school property.

## Recommendations

1. That the request for a Crossing Guard at the intersection of Artesian Drive and Fullwell Road, for students attending Artesian Drive Public School, 3325 Artesian Drive, be denied as the warrants have not been met. 2. That via the school newsletter the Principal be requested to direct parents not to do the following: a. Not to stop in the No Stopping Zone on Fullwell Road b. Not to access the property via the school's exit driveway 3. That the Legislative Coordinator be requested to send a PDF of a No Stopping Sign to the Principal 4. That the Transportation and Works Department be requested to review the No Stopping signs at the curb cut and landing pad on the north side of Artesian Drive opposite Dundoon Drive.

## Observations

A) Volume of Traffic: (See Intersection Plan)

B) Number of Crossing Pedestrians

☐ Heavy ☒ Light ☐ Intermittent

8 AM 9 PM

**Sent:** October 25, 2011 8:33 PM

**To:** Traffic Safety

**Subject:** Need Cross Guard

3b

**Hi My Name is Nargis Malik. And I Live in Front of Artesian Drive School. In mornings this place is Really busy. thats why we really need a Cross Gaurd there. Thank you so much.**

**Name of School: Artesian Drive Public School**

**Reason for Request: Too Much Traffic And Pedistrians at School Times**

**Intersection : Artesian Drive and Dunoon Drive**

**Nargis Malik**

# 3c Site Inspection Report - Traffic Safety Council

SEPT. 20, 2010

## Observers

Complete All Questions

File Number:

RT.10. Artesian Drive Public School

File Number:

RT.10.

Ward

8

Observed By:

S. Duffin

D. Raakman

B. Swedak (pm)

S. Duffin

Date of Inspection:

2010 09 20

Inspection Time:

8:00 AM

3:00 PM

Requested By:

Prepared By:

S. Duffin/D. Raakman

Request For:

Place a crossing guard

Weather Conditions: ☒ Dry ☒ Sunny ☐ Rain ☐ Snow ☐ Other:

## Site

School:

Artesian Drive Public School

Address:

3325 Artesian Drive L5M 7J8

School Times:

8:30

AM 3:00

PM

Student Population:

No. of School Buses:

School:

Address:

School Times:

AM

PM

Student Population:

No. of School Buses:

School:

Address:

School Times:

AM

PM

Student Population:

No. of School Buses:

Location: (Please identify the location with reference to nearest intersection. Indicate nearest school and address.)

Artesian Dr./ Fulwell Rd.

Type of Crossing: ☐ 4 Way Intersection ☒ 3 Way Intersection ☐ Midblock (i.e., not at Intersection)

Type of Control: ☐ Traffic Lights ☐ Yield Signs ☐ No Control

☒ Stop Signs (Traffic is stopped on one street only) ☐ All Way Stop (Traffic is stopped in all directions)

## Part 1 Site Conditions

School Signs:

☒ School Area Signs

☐ School crossing Signs

☐ Parking/Stopping Prohibition

Posted Speed Limit:

☒ 40 km/hr

☐ 50 km/hr

☐ 60 km/hr

☐ Other

km/hr

Visibility of Crossing Pedestrians: ☐ Poor

☐ Fair

☒ Good

Sight Obstructions:

☐ Hedges

☐ Trees

☐ Fences

☐ Bus Shelter

☐ Newspaper Boxes

☐ Other (Specify)

Road Grade:

☒ Flat

☐ Incline

☐ Decline

Road Geometrics:

☒ Straight

☐ Curved

Road Width:

☐ Feet

☐ Metres

Curb to Curb: 38

☒ Feet

☐ Metres

Curb to Median:

☐ Feet

☐ Metres

Road Conditions:

☒ Dry

☐ Wet

☐ Snow Covered

☐ Ice

Sidewalks:

☐ Not Present

☒ North

☒ South

☐ East

☒ West

Proximity to School:

☒ In Front of

☐ Within

☐ Feet

☐ Metres

Route Survey:

☐ Shopping Area

☐ Construction

☐ Driveway

☐ Other (Specify)

Road Geometrics:

☒ Transit Bus Stop

☐ Underpass

☐ Parked Vehicles Within

☐ Feet

☐ Metres



# Warrant Survey

Location:

Check Appropriate Box For The Access Required

3d

Artesian Dr./ Fulwell Rd.

SAFE GAP TIME (W/3.5+4) = 15 SEC.

## Morning Intervals

No.

Peds.: Time:

Gaps:

		# of Gaps	# of Conflicts
	8:00-8:05		
	8:05-8:10 III 37 II III 15 34 / 25 /	6	
1	8:10-8:15 51 / 27 II III 17 / 20 III 22	7	
	8:15-8:20 II 44 / 19 / 21 II III 25 II III	5	
7	8:20-8:25 24 II III II III II III II 55 29 II III /	5	
4	8:25-8:30 II 22 II III II III II III II III II III II 22	2	
	8:30-8:35		
	8:35-8:40		
	8:40-8:45		

## Afternoon Intervals

No./

Peds.: Time:

Gaps:

	3:00-3:05 / 22 109 22 17 16 II III	11	
1	3:05-3:10 / 27 / 20 II III II III 42	4	
19	3:10-3:15 II III II III II III II 22 II III II	1	
12	3:15-3:20 II III / 17 21 III 19 II III 19 / 22 III 33 II 37 II III /	9	
	3:20-3:25 23 II III 16 22 / 17 / 16 54 29 II	9	
	3:25-3:30		
	3:30-3:35		

## Comments/Conflicts

No conflicts observed. AM-50% of students were kindergarten aged crossing with parents that parked on Fulwell Road. PM- All but 7 of the 33 students crossing crossed to parents vehicles on either Fulwell Road or some on Artesian Drive.

## Recommendations

1. That the request for a Crossing Guard at the intersection of Artesian Drive and Fulwell Road for students attending Artesian Drive Public School, 3325 Artesian Drive, be denied as the warrants have not been met.
2. That the Principal of Artesian Drive Public School be requested to consider the implementation of a Dismissal Program.
3. The Principal of Artesian Drive Public School be requested to consider the implementation of a Kindergarten Kiss & Ride program in the morning, utilizing the unused portion of the Kiss & Ride driveway on the West side of the school, abutting the Kindergarten entrance.
4. That Parking Enforcement be requested to enforce parking violations on Artesian Drive in front of Artesian Drive Public School between 8:15 am- 8:35 am and 2:50 pm- 3:20 pm.

RT.10. Artesian (WB)

## Observations

A) Volume of Traffic: (See Intersection Plan)

B) Number of Crossing Pedestrians

☐ Heavy ☐ Light ☒ Intermittent

12 AM 33 PM



# Site Inspection Report - Traffic Safety Council

## Observers

Complete All Questions

File Number:

RT.10. Queenston Drive Public School

File Number:

RT.10.

Ward

6

Traffic Safety Council

NOV 23 2011

Observed By:

D. Brown

S. Duffin

J. White

D. Yaunan

E. Lethbridge

D. Fryers

Date of Inspection:

2011 11 1

Inspection Time:

8:30 AM

3:30 PM

Requested By:

Resident

Prepared By:

Request For:

Review Pedestrian Safety

Weather Conditions: ☒ Dry ☒ Sunny ☐ Rain ☐ Snow ☐ Other:

## Site

School:

Queenston Drive Public School

Address:

3520 Queenston Drive

School Times:

9:00

AM

3:30

PM

Student Population:

No. of School Buses:

School:

Address:

School Times:

AM

PM

Student Population:

No. of School Buses:

School:

Address:

School Times:

AM

PM

Student Population:

No. of School Buses:

Location: (Please identify the location with reference to nearest intersection. Indicate nearest school and address.)

Intersection of Burnhamthorpe Rd and Creditview Rd/ Central Pkwy AND pedestrian safety along walking route from Burnhamthorpe Rd & Creditview Rd. to Queenston Drive Public School

Type of Crossing: ☒ 4 Way Intersection ☐ 3 Way Intersection ☐ Midblock (i.e., not at Intersection)Type of Control: ☒ Traffic Lights ☐ Yield Signs ☐ No Control☐ Stop Signs (Traffic is stopped on one street only) ☐ All Way Stop (Traffic is stopped in all directions)

## Part 1 Site Conditions

School Signs:

☐ School Area Signs☐ School crossing Signs☐ Parking/Stopping Prohibition

Posted Speed Limit:

☐ 40 km/hr☐ 50 km/hr☒ 60 km/hr☐ Other

km/hr

Visibility of Crossing Pedestrians:

☐ Poor☐ Fair☒ Good

Sight Obstructions:

☐ Hedges☐ Trees☐ Fences☐ Bus Shelter☐ Newspaper Boxes☐ Other (Specify)

Road Grade:

☒ Flat☐ Incline☐ Decline

Road Geometrics:

☒ Straight☐ Curved

Road Width: N/A

☐ Feet☐ Metres

Curb to Curb:

☐ Feet☐ Metres

Curb to Median:

☐ Feet☐ Metres

Road Conditions:

☒ Dry ☐ Wet☐ Snow Covered☐ Ice

Sidewalks:

☐ Not Present☒ North☒ South☒ East☒ West

Proximity to School:

☐ In Front of☒ Within 2000☐ Feet☒ Metres

Route Survey:

☒ Shopping Area☐ Construction☐ Driveway☐ Other (Specify)

Road Geometrics:

☒ Transit Bus Stop☐ Underpass☐ Parked Vehicles Within☐ Feet☐ Metres

# Warrant Survey

Check Appropriate Box For The Access Required

Location:

Intersection of Burnhamthorpe Rd and Creditview Rd/ Central Pkwy AND pedestrian safety along walking route from Burnhamthorpe Rd & Creditview Rd. to Queenston Drive Public School

SAFE GAP TIME (W/3.5+4) = SEC.

## Morning Intervals

No.

Peds.: Time: Gaps:

		# of Gaps	# of Conflicts
	Turning Traffic North Leg		
8:20-8:25	, ,    ,    ,		
8:25-8:30	,    ,  ,    ,		
8:30-8:35	, ,    ,		
8:35-8:40	,    ,    ,    ,  ,    ,    ,    ,		
8:40-8:45	,  ,    ,    ,		
8:45-8:50	,  ,    ,    ,		
8:50-8:55	,    ,    ,    ,    ,		

## Afternoon Intervals

No./

Peds.: Time: Gaps:

3:30-3:35	,    ,    ,    ,
3:35-3:40	,    ,  ,    ,
3:40-3:45	,  ,    ,    ,
3:45-3:50	,    ,    ,    ,
3:50-3:55	,    ,  ,
3:55-4:00	,  ,    ,    ,

## Comments/Conflicts

No conflicts were observed. Traffic was courteous to crossing students. 25 grade 7 and 8 students live north of Burnhamthorpe Road are not able to be fully accomodated on courtesy bussing for the 2011-2012 school year. Parents are concerned with these students having to cross at the intersection of Burnhamthorpe Road and Creditview Road/ Central Parkway and with students using the route along Burnhamthorpe Road to the Creditwoodlands. There are no concerns with the physical conditions of of the walking route from Burnhamthorpe Road and Creditview Road/ Central Parkway to The Creditwoodlands, The intersection of Burnhamthorpe Road and Creditview Road/ Central Parkway functions well, the crosswalks are clearly marked with Zebra Stripes, and there is a significant volume of adult pedestrians using the intersection.

## Recommendations

### Observations

A) Volume of Traffic: (See Intersection Plan)

B) Number of Crossing Pedestrians

☒ Heavy ☐ Light ☐ Intermittent

1 AM 4 PM

# Warrant Survey

Check Appropriate Box For The Access Required

4b

Location:

Intersection of Burnhamthorpe Rd and Creditview Rd/ Central Pkwy AND pedestrian safety along walking route from Burnhamthorpe Rd & Creditview Rd. to Queenston Drive Public School

SAFE GAP TIME (W/3.5+4) = SEC.

## Morning Intervals

No.

Peds.: Time:

Gaps:

# of Gaps

# of Conflicts

Turning Traffic South Leg

	8:20-8:25	
	8:25-8:30	////,////,/,////,////,///
	8:30-8:35	////,////,////,///
	8:35-8:40	////,///,////,////,///
1	8:40-8:45	////,////,////,////,////,/,
	8:45-8:50	////,////,/,////,////
	8:50-8:55	////,////,///
	8:55-9:00	////,/,////,////,///

## Afternoon Intervals

No./

Peds.: Time:

Gaps:

	3:30-3:35	/,////,///
	3:35-3:40	////,////,/,///
	3:40-3:45	////,///,////,///
	3:45-3:50	////,/,////,///
	3:50-3:55	////,///,///
1	3:55-4:00	////,/,////////,///

## Comments/Conflicts

No conflicts were observed. Traffic was courteous to crossing students. 25 grade 7 and 8 students live north of Burnhamthorpe Road are not able to be fully accommodated on courtesy bussing for the 2011-2012 school year. Parents are concerned with these students having to cross at the intersection of Burnhamthorpe Road and Creditview Road/ Central Parkway and with students using the route along Burnhamthorpe Road to the Creditwoodlands. There are no concerns with the physical conditions of the walking route from Burnhamthorpe Road and Creditview Road/ Central Parkway to The Creditwoodlands. The intersection of Burnhamthorpe Road and Creditview Road/ Central Parkway functions well, the crosswalks are clearly marked with Zebra Stripes, and there is a significant volume of adult pedestrians using the intersection.

## Recommendations

### Observations

A) Volume of Traffic: (See Intersection Plan)

B) Number of Crossing Pedestrians

☒ Heavy ☐ Light ☐ Intermittent

1 AM 1 PM

# 4c Warrant Survey

Check Appropriate Box For The Access Required

Location:

Intersection of Burnhamthorpe Rd and Creditview Rd/ Central Pkwy AND pedestrian safety along walking route from Burnhamthorpe Rd & Creditview Rd. to Queenston Drive Public School

SAFE GAP TIME (W/3.5+4) = SEC.

## Morning Intervals

No.

Peds.: Time: Gaps:

	Turning Traffic East Leg	# of Gaps	# of Conflicts
8:20-8:25	.		
8:25-8:30	////,I,////		
8:30-8:35	////,I,////,I		
8:35-8:40	////,II,////,III		
8:40-8:45	////,////,////,III		
8:45-8:50	////,////,II,////		
8:50-8:55	////,////,I,////,////,////,II		
8:55-9:00	////,II		

## Afternoon Intervals

No./

Peds.: Time: Gaps:

3:30-3:35	////,I,////,III
3:35-3:40	////,I,////,III
3:40-3:45	////,III,II
3:45-3:50	////,////,I,////,II
3:50-3:55	I,////,////,II
1 3:55-4:00	////,////,////,I,////,I

## Comments/Conflicts

No conflicts were observed. Traffic was courteous to crossing students. 25 grade 7 and 8 students live north of Burnhamthorpe Road are not able to be fully accommodated on courtesy bussing for the 2011-2012 school year. Parents are concerned with these students having to cross at the intersection of Burnhamthorpe Road and Creditview Road/ Central Parkway and with students using the route along Burnhamthorpe Road to the Creditwoodlands. There are no concerns with the physical conditions of the walking route from Burnhamthorpe Road and Creditview Road/ Central Parkway to The Creditwoodlands. The intersection of Burnhamthorpe Road and Creditview Road/ Central Parkway functions well, the crosswalks are clearly marked with Zebra Stripes, and there is a significant volume of adult pedestrians using the intersection.

## Recommendations

## Observations

A) Volume of Traffic: (See Intersection Plan)

B) Number of Crossing Pedestrians

☒ Heavy ☐ Light ☐ Intermittent

1 AM 1 PM

# Warrant Survey

Check Appropriate Box For The Access Required

4d

Location:

Intersection of Burnhamthorpe Rd and Creditview Rd/ Central Pkwy AND pedestrian safety along walking route from Burnhamthorpe Rd & Creditview Rd. to Queenston Drive Public School

SAFE GAP TIME (W/3.5+4) = SEC.

## Morning Intervals

No.

Peds.: Time: Gaps:

	Turning Traffic West Leg	# of Gaps	# of Conflicts
8:20-8:25	////,////,///		
8:25-8:30	////,/,///		
8:30-8:35	////,////,/		
8:35-8:40	////,////,/,////		
8:40-8:45	////,////,/,///		
8:45-8:50	////,/,////,////		
8:50-8:55	////,/,////		
8:55-9:00	////,////		

## Afternoon Intervals

No./

Peds.: Time: Gaps:

1	3:30-3:35	////,/,////,///
	3:35-3:40	////,////,////,///
	3:40-3:45	////,////,/,////,////,/,/
	3:45-3:50	////,////,///
	3:50-3:55	////,////,/,////,////,///
3	3:55-4:00	///,////

## Comments/Conflicts

No conflicts were observed. Traffic was courteous to crossing students. 25 grade 7 and 8 students live north of Burnhamthorpe Road are not able to be fully accommodated on courtesy bussing for the 2011-2012 school year. Parents are concerned with these students having to cross at the intersection of Burnhamthorpe Road and Creditview Road/ Central Parkway and with students using the route along Burnhamthorpe Road to the Creditwoodlands. There are no concerns with the physical conditions of the walking route from Burnhamthorpe Road and Creditview Road/ Central Parkway to The Creditwoodlands. The intersection of Burnhamthorpe Road and Creditview Road/ Central Parkway functions well, the crosswalks are clearly marked with Zebra Stripes, and there is a significant volume of adult pedestrians using the intersection.

## Recommendations

## Observations

A) Volume of Traffic: (See Intersection Plan)

B) Number of Crossing Pedestrians

☒ Heavy ☐ Light ☐ Intermittent

1 AM 4 PM

4e

TUES. NOV. 1 @ 8<sup>30</sup> AM \$ 3<sup>30</sup> PM

**Laura Wilson**

---

**From:** Sacha Smith on behalf of Traffic Safety  
**Sent:** October 11, 2011 12:07 PM  
**To:** Laura Wilson  
**Subject:** FW: safety concern for students of Queenston Drive Public School  
**Attachments:** letter re Riley on bus Sept 11.doc

**Follow Up Flag:** Follow up  
**Flag Status:** Flagged

**Categories:** TSC

---

**From:** Jane McCann  
**Sent:** October 7, 2011 11:43 AM  
**To:** Traffic Safety  
**Subject:** safety concern for students of Queenston Drive Public School

I am the mother of 2 children currently attending Queenston Drive Public School. My daughter, now in grade 7, no longer qualifies for the bus. The school usually follows a "fill up the bus" system and by this time usually the grade 7 and 8 students are accepted onto the bus. It sounds like this will not happen this year for approximately 15 students. I am very concerned about this as the route to school is not safe and crosses 2 very busy roads (Burnhamthorpe, Creditview). I have attached the letter I provided to the school several weeks ago which outlines my concerns. I am wondering if the traffic safety council can help investigate my concern. There are many other parents who are equally concerned and will be following up with the school, the Peel School Board, the police, local councilors, etc.

Looking forward to hearing from you,

Jane McCann



September 19, 2011

---

Mrs. Powell, Mrs. Gittings

This letter is to request permission that Riley McCann be allowed to take the bus to and from school this year. Although she is in grade 7 and no longer qualifies, I request that she take the bus to accompany her younger sister, Abigail in grade 3.

I have the following concerns with the bus policy:

- Siblings going to the same school should not be leaving the house and arriving home at different times. This is not safe. Siblings going to the same school should travel to and from the school together. They are taught to look out for each other.
- The route my children would take to school is not safe. They must cross Creditview and Burnhamthorpe; both are very busy roads with many traffic accidents.
- The route to school takes them along Burnhamthorpe Road which is very busy, and is not in a residential area. There is a lane for cars to pull over and wait to pick up people getting off the Go Trains and buses, which is another safety concern.
- The children in my neighbourhood are aware of a short cut which takes them across the train tracks where there is no crossing. These tracks are very busy as they are utilized by frequent morning and afternoon GO trains as well as other trains. While my children know not to take this short cut, many children do cross the tracks illegally in order to get to school on time and get home more quickly. This is a serious concern and should be taken into account for children living outside of the Queenston/Credit Woodlands area.
- The walk takes at least 30 minutes. Children these days are given a lot of homework forcing them to carry many books and text books back and forth. In the older grades students are also assigned musical instruments which they must carry to and from school.

I understand that children in grades 7 and 8 fall under a different bus policy, but this policy does not make sense for a K to 8 school. Also, conditions noted above should be taken into account so that exceptions can be made when there are considerable safety concerns. I will be following up with the Peel School Board and will copy you on the letter.

I would appreciate it if you could follow up with me as soon as Riley is able to take the bus. Please contact me at the number below.

Sincerely,

Jane McCann

4g

**Laura Wilson**

---

**From:** Sacha Smith on behalf of Traffic Safety  
**Sent:** October 17, 2011 10:22 AM  
**To:** Laura Wilson  
**Subject:** FW:  
  
**Follow Up Flag:** Follow up  
**Flag Status:** Flagged  
  
**Categories:** TSC

---

-----Original Message-----

**From:** Edel Gallivan [  
**Sent:** October 15, 2011 9:13 AM  
**To:** Traffic Safety  
**Subject:**

before we start a review process and waste your time -how far does an intersection have to be from a school?  
are there a minimum number of kids that need to cross in order to qualify?

here is the scenario:

the school in the credit woodlands area-Queenston drive and kids in grade 7 and 8 that live in the Deer run area no longer qualify for bussing-the school and school board wants these kids to cross Burnamthorpe at Creditview not once but twice(going West on Burnamthorpe and south on Creditview/Central parkway) and then the same in reverse at the end of the day. There is only about 10 kids who do this-so would the city even consider 2 crossing guards for these few kids at said location?

I look forward to your reply.

Thank you ,

Edel Gallivan-concerned Mum.

October 24, 2011

TO: Mississauga Traffic Safety Council

<b>RECEIVED</b>
REGISTRY No.
DATE OCT 24 2011
FILE No.
CLERK'S DEPARTMENT

Traffic Safety Council
OCT 26 2011

**RE: Safety concerns associated with Queenston Drive Public School**

Members of MTSC:

Please be advised that I am concerned about the safety of the walk for many of the students attending Queenston Drive Public School and request an evaluation by MTSC. STOPR has been contacted by a representative of parents in the school, and we are waiting for their assessment.

These students encounter several dangerous situations on their walk as follows:

- Crossing the intersection of Creditview and Burnhamthorpe
  - o 8 lanes of heavy traffic; no crossing guard
- Crossing the intersection of Creditview and Rathburn
  - o Entrance to Erindale GO Station
- In addition, these students are separated from their school by train tracks servicing both commercial and GO trains many times per day
- Walking route from Burnhamthorpe and Creditview to The Credit Woodlands involves passing a long stretch of uninhabited property
- Major and ongoing construction at the Erindale GO station, restricting the use of the north sidewalk
- This construction will open up a second entry point for GO traffic, meaning a continued and added safety concern

I would appreciate your review of this situation.

Thank you for your ongoing concern and consideration for the safety of all our students.

Sue Lawton  
Sue Lawton, Trustee  
Peel District School Board  
Wards 3 and 4

Cc: Ron Starr, Councillor Ward 6  
Jeff White, PDSB Trustee Ward 6  
Rick Williams, PDSB Trustee Ward 5, MTSC Committee Member  
Deborah Powell, Principal, Queenston Drive Public School  
Sue Gittings, Vice Principal, Queenston Drive Public School  
Jane McCann, Parent, Queenston Drive Public School  
Dr. Sanja Pajovic, Parent, Queenston Drive Public School

41

Have a great day ~

**Marcy Macina**

Operations Officer, East Area

**Student Transportation of Peel Region**

Peel District School Board/Dufferin-Peel Catholic District School Board



Tel: 905-890-6000 or 1-800-668-1140

[www.stopr.ca](http://www.stopr.ca)

---

**From:** Sheelagh Duffin [mailto:Sheelagh.Duffin@mississauga.ca]

**Sent:** Thursday, October 13, 2011 4:32 PM

**To:** Macina, Marcy

**Cc:** Laura Wilson

**Subject:** Queenston Drive PS

Hi Marcy,

Traffic Safety is going to be scheduling a Site Inspection at Burnhamthorpe Road & Creditview and walking the route along Burnhamthorpe Road that the students who are not able to be accommodated by Courtesy bussing must take to access Queenston Drive PS.

Would you kindly provide the numbers and ages of the Queenston Drive PS students living north of Burnhamthorpe Road that are not able to be accommodated on the bus.

Thanks!

Sheelagh  
5167

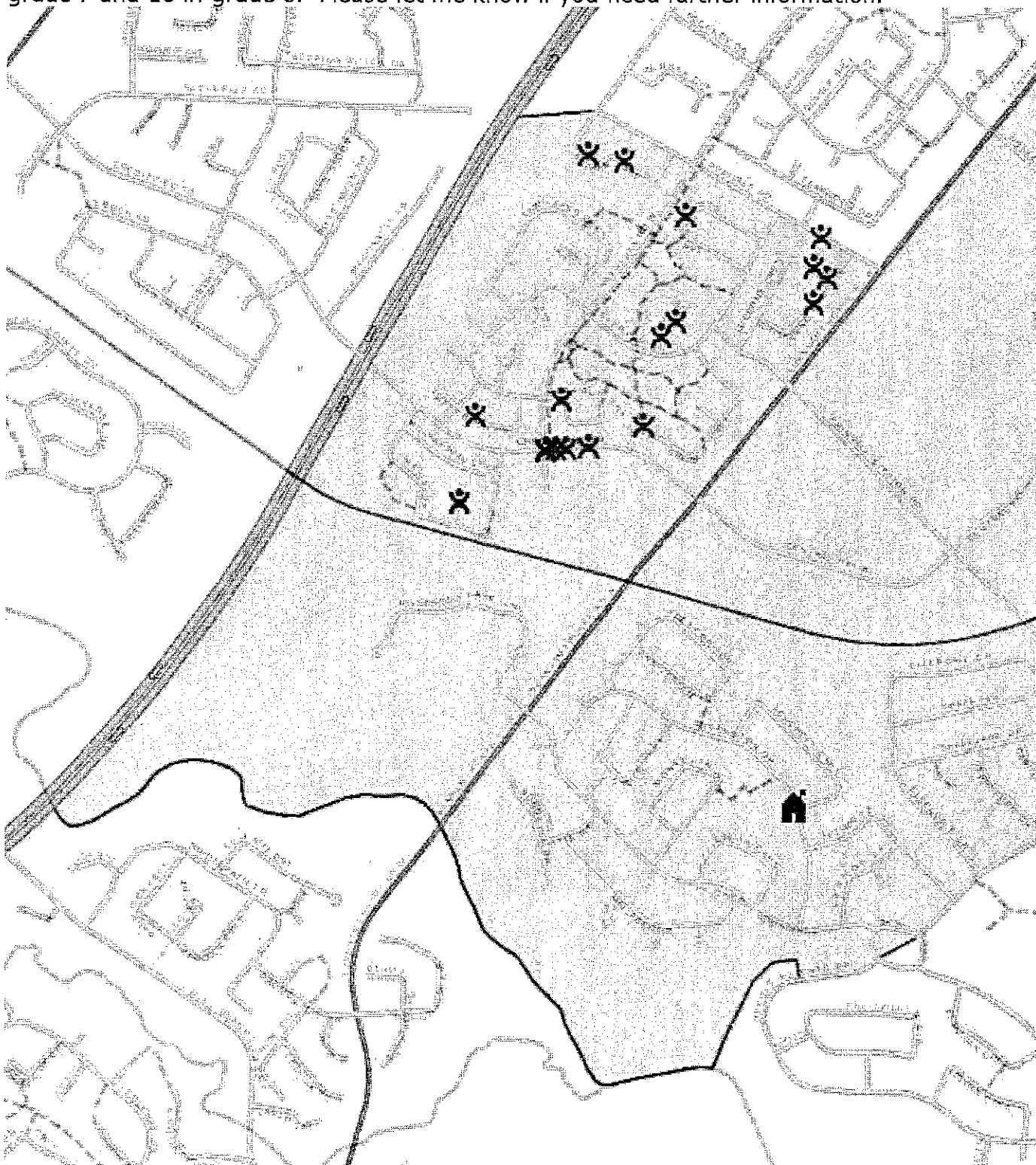
Sheelagh Duffin  
Supervisor, Crossing Guards  
City of Mississauga  
3185 Mavis Road  
Mississauga ON L5C 1T7  
Phone 905 896-5167  
Fax 905 896-5583  
[sheelagh.duffin@mississauga.ca](mailto:sheelagh.duffin@mississauga.ca)

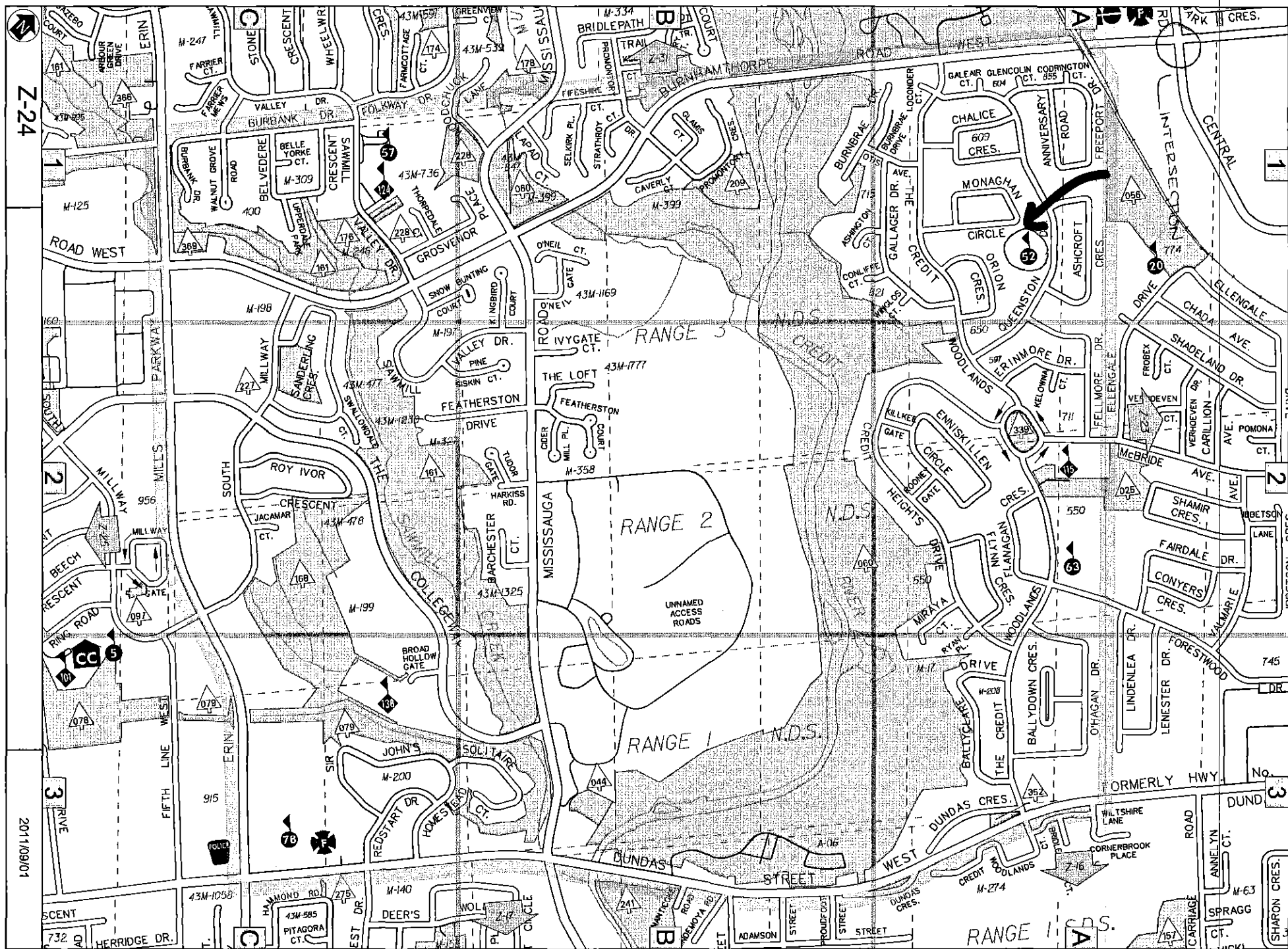
**Laura Wilson**

**From:** Macina, Marcy  
**Sent:** October 14, 2011 12:31 PM  
**To:** Sheelagh Duffin  
**Cc:** Laura Wilson  
**Subject:** RE: Queenston Drive PS

Hi Sheelagh,

There are a total of 25 walkers living North of Burnhamthorpe that currently walk – 15 in grade 7 and 10 in grade 8. Please let me know if you need further information.





Z-24

2011/09/01

School Zone Safety (Kiss and Ride) Report  
November 2011



**November 1, 2011**  
**Edenrose Public School**  
**Ward 6**

Attended by: David Raakman

The site inspection was requested by a parent to review the "gridlock" in front of the school during morning drop-off. During my visit, I observed only two occasions where there was a significant line of traffic in front of the school on Edenrose St. and neither created gridlock. There is a No Left Turn sign posted at the driveway exit and compliance was acceptable, though not perfect. In fact, it was when vehicles attempted to make a left turn out of the driveway that a back log occurred in the Kiss and Ride lane.

I observed a high volume of vehicular traffic using the Kiss and Ride, especially considering the mild weather and that Edenrose PS is part of the Walk to School program. In addition to all the cars and vans, Edenrose welcomes 11 busses every morning. It is a French Immersion site. School enrolment stands at approximately 700 students.

One bus is regularly late for its morning run. This bus carries one (section 23) student for Edenrose. A staff member informed me that the previous Friday, this bus arrived at 9:35, a full 40 minutes after the school day begins. On the day of my inspection, the bus had not arrived by the time I left at 9:05 a.m.

I observed a high number of parents arriving after the morning entry bell when staff are no longer monitoring the Kiss and Ride.

Staff on duty are to be congratulated for their fine efforts to ensure as smooth a Kiss and Ride operation as possible in the interest of student safety. While there are some busy moments during the drop-off procedure, staff members' "take charge" attitude and smiling faces help reduce the frustration that could develop into more serious concerns.

The recommendations that follow are designed to appeal to the better judgment of parents in the interest of all students' safe arrival at school.

**Recommendation:**

1. That the Principal of Edenrose Public School 1342 Edenrose Street, be requested to direct parents to do the following during the morning drop off period as these procedures relate to student safety:
  - a. To adhere to the No Left Turn prohibition at the driveway exit to ease congestion along Edenrose Street.
  - b. To arrive at the school before 8:55 a.m. when school starts, as staff are available to monitor student safety during drop off procedures prior to the entry bell.

- c. To remain in their vehicles when dropping off their child(ren) so that traffic continues to flow in the School Zone Safety (Kiss and Ride) Lane.
2. That the Walk to School subcommittee of Traffic Safety Council be requested contact the Principal or Champion of the School Walking Routes Program at Edenrose Public School to assess the effectiveness of the of the program and develop and implement solutions to increase participation.

**November 1, 2011**

**Artesian Drive Public School**

**Ward 8**

Attended by: David Raakman

This Kiss and Ride operates well. Artesian Drive PS has a new principal; under the old principal a "pass" system was initiated whereby parents, after attending a meeting about proper use of the Kiss and Ride, would receive a laminated sign to put in their dashboard indicating they were allowed entry on school property to use the Kiss and Ride to drop off their child(ren). This pass system is still in place this year although one staff member said there were far less issues with negative parent behaviour than in the past.

This Kiss and Ride has at least six staff members on duty, including one at the driveway entrance to allow pass holders in, and one at the driveway exit to help pedestrians cross the driveway and to ensure motorists do not make a left turn out of the exit onto Artesian Drive. They are only allowed to go right or straight. There are no "No Left Turn" signs at the exit currently.

**Recommendation:**

1. That the Peel District School Board be requested to review the feasibility of installing two No Left Turn signs between 8:00 a.m. and 9:00 a.m. at the driveway exit of Artesian Drive Public School, 3325 Artesian Drive.
2. That Parking Enforcement be requested to enforce parking infractions along Artesian Drive in the vicinity of Artesian Drive Public School, 3325 Artesian Drive, between 8:00 a.m. and 8:30 a.m.



**November 16, 2011**

**Darcel Avenue Senior Public School**

**Ward 5**

Attended by: Louise Goegan

The Kiss & Ride has just been freshly painted but doesn't appear to have any signage. I am not sure that this was intended to be a true Kiss & Ride. The school goes in at 8:40 am with a bell but children do not have to be in class until 8:50. My observation started at 8:30 and there really didn't seem to be too large of vehicular traffic. The concerns that I observed were where students were crossing Darcel from Middleshire Drive and then interrupting the flow of traffic in the driveway. I do not believe that the school is operating a Kiss & Ride program.

**Recommendation:**

1. That the Peel District School Board be requested to do the following at Darcel Avenue Senior Public School, 7635 Darcel Avenue:
  - a. Advise Traffic Safety Council if a School Zone Safety (Kiss & Ride) Program was developed at the school, and if there is a schedule for implementation.
  - b. Review the feasibility of installing appropriate School Zone Safety (Kiss and Ride) signage on school property.
3. That if a School Zone Safety (Kiss & Ride) Program is implemented at Darcel Avenue Senior Public School, the Legislative Coordinator be requested to arrange for staff and volunteer training regarding the effective running of the program.
4. That the Principal of Darcel Avenue Senior Public School be requested to direct parents and students to use the sidewalk entrance to the school.

**November 15, 2011**

**Thorn Lodge Drive Public School**

**Ward 2**

**Recommendation:**

That the Principal be requested to do the following at Thorn Lodge Drive Public School, 2730 Thorn Lodge Drive:

- a. Direct school bus drivers to pull up to the Stop Bar of the bus lane when dropping off students.
- b. That the Staff monitoring the morning drop off be directed to wear safety vests provided by Traffic Safety Council.
- c. Direct students and parents to use the side entrance of the school.

**November 17, 2011**  
**McKinnon Public School**  
**Ward 10**

The Kiss and Ride program at McKinnon Public School operates very smoothly and could be considered a model for other schools. There are plenty of staff on duty, greeting motorists and pedestrians with smiling faces. The drop-off area along the west side of the school affords space for nine vehicles to unload at a time. This Kiss and Ride an unfortunately high number of vehicles each day, even as the school is part of the school walking routes program, however, the staff are able to move the traffic quickly and efficiently. The only potential problem occurs at the driveway exit when cars are waiting to turn left back onto Tacc Drive or waiting to turn right because of the backlog of vehicles waiting for the traffic signal at Tenth Line and Tacc.

**Recommendation:**

That the Transportation and Works Department be requested to review the timing of the green light for motorists at the intersection of Tenth Line West and Tacc Drive between 8:15 a.m. and 8:30 a.m. on weekdays to allow more east bound motorists from McKinnon Public School, 3270 Tacc Drive, though the intersection.

# Kiss & Ride Site Inspection Report

City of Mississauga

Traffic Safety Council

- ☐ Start up Visit  
☒ Follow up Visit

## Observers

Observed by: David RaakmanDate of Inspection: Tuesday Day: November 1 Time: 8:25-9:05 2011 11 01  
YY MM DDRequest For: review traffic patterns on and around school propertyRequest By: parentWeather Conditions: ☒ Dry ☐ Sunny ☐ Rain ☐ Snow ☐ Other: Equipment provided: ☐ Vests ☐ Cone ☐ Stop Sign ☐ Weight ☐ Other: 

## Site Conditions

School Name: Edenrose Public SchoolLocation: Edenrose St.Hours of Operation: ☒ a.m. ☐ noon ☐ p.m.Facilities: ☒ Day Care ☐ Kindergarten *(if yes, answer below)*Day Care contact: Phone: PLASP Phone: Type of Driveway: Width:  ☐ 2-lane ☒ 3-laneBus Loading Zone: ☒ on site ☐ off siteExisting Signage: adequateLocation of Staff Parking: separate lot, west of buildingLocation of Visitors Parking: same as above

## Follow up on Kiss & Ride Program

Status of Program: ☒ operates well ☐ needs further follow-up ☐ conflicts ☐ see over☐ Day Care conflict with Kiss & Ride ☐ Kindergarten conflict with Kiss & RideParticipants on Duty: ☒ School staff ☐ senior students ☐ parent volunteersVests worn ☒ yes ☐ noHours of Operation: ☒ a.m. ☐ noon ☐ p.m.Signage required: ☐ yes ☒ noPavement Markings: ☐ yes ☒ no Follow up Date 11 01  
YY MM DD

School Name: \_\_\_\_\_ Edenrose Public School \_\_\_\_\_

**Comments / Observations:**

The site inspection was requested by a parent to review the "gridlock" in front of the school during morning drop-off. During my visit, I observed only two occasions where there was a significant line of traffic in front of the school on Edenrose St. and neither created gridlock. There is a No Left Turn sign posted at the driveway exit and compliance was acceptable, though not perfect. In fact, it was when vehicles attempted to make a left turn out of the driveway that a back log occurred in the Kiss and Ride lane.

I observed a high volume of vehicular traffic using the Kiss and Ride, especially considering the mild weather and that Edenrose PS is part of the Walk to School program. In addition to all the cars and vans, Edenrose welcomes 11 busses every morning. It is a French Immersion site. School enrolment stands at approximately 700 students.

One bus is regularly late for its morning run. This bus carries one (section 23) student for Edenrose. A staff member informed me that the previous Friday, this bus arrived at 9:35, a full 40 minutes after the school day begins. On the day of my inspection, the bus had not arrived by the time I left at 9:05 a.m.

I observed a high number of parents arriving after the morning entry bell when staff are no longer monitoring the Kiss and Ride.

Staff on duty are to be congratulated for their fine efforts to ensure as smooth a Kiss and Ride operation as possible in the interest of student safety. While there are some busy moments during the drop-off procedure, staff members' "take charge" attitude and smiling faces help reduce the frustration that could develop into more serious concerns.

The recommendations that follow are designed to appeal to the better judgment of parents in the interest of all students' safe arrival at school.

**Recommendations:**

**1. That the principal of Edenrose Public School be requested to remind parents of the following as they relate to student safety during the morning drop-off:**

- To adhere to the No Left Turn prohibition at the driveway exit during morning drop-off in order to ease congestion on Edenrose Street.
- To arrive at the school prior to 8:55 when school starts, as staff no longer monitor the Kiss and Ride after the entry bell rings.
- To remain in their vehicles when dropping off their child(ren) so that traffic can continue to flow in the Kiss and Ride lane.

**2. That members of the Walk To School subcommittee initiate contact with the principal or lead staff person at Edenrose Public School to evaluate the effectiveness of the School Walking Routes program and develop solutions to improve participation.**

# Kiss & Ride Site Inspection Report

**City of Mississauga**  
Traffic Safety Council

- ☐ Start up Visit  
☒ Follow up Visit

## Observers

Observed by: David Raakman

Date of Inspection: \_\_\_ Day: \_\_\_ Thursday \_\_\_ Time: \_\_\_ 8:10-8:30 \_\_\_ | 11 | 11 | 03  
YY MM DD

Request For: \_\_\_\_\_

Request By: \_\_\_\_\_

Weather Conditions:    ☒ Dry    ☐ Sunny    ☐ Rain    ☐ Snow    ☐ Other : \_\_\_\_\_

Equipment provided: ☐ Vests ☐ Cone ☐ Stop Sign ☐ Weight ☐ Other: \_\_\_\_\_

## Site Conditions

School Name: Artesian Drive Public School

Location: \_\_\_\_\_

Hours of Operation:      ☒ a.m.                      ☐ noon                      ☐ p.m.

**Facilities:**                      ☐ Day Care                      ☐ Kindergarten                      (if yes, answer below)

Day Care contact: Phone: \_\_\_\_\_ Phone: \_\_\_\_\_

Type of Driveway: Width: \_\_\_\_\_ x 2-lane ☐ 3-lane

Bus Loading Zone:        ☒ on site                    ☐ off site

Existing Signage: \_\_\_\_\_

Location of Staff Parking: west of buiding\_\_\_\_\_

Location of Visitors Parking: in front of school

## Follow up on Kiss & Ride Program

Status of Program:      ☒ operates well      ☐ needs further follow-up      ☐ conflicts      ☐ see over

☐ Day Care conflict with Kiss & Ride      ☐ Kindergarten conflict with Kiss & Ride

Participants on Duty: ☒ School staff ☐ senior students ☐ parent volunteers

Vests worn                    x    yes                    x    no

Hours of Operation:      ☒ a.m.                      ☐ noon                      ☐ p.m.

Signage required: ☒ yes ☐ no

Pavement Markings: ☐ yes ☒ no Follow up Date   /  /    
YY MM DD

School Name: \_\_\_\_\_Artesian Drive Public School\_\_\_\_\_

**Comments / Observations:**

This Kiss and Ride operates well. Artesian Drive PS has a new principal; under the old principal a "pass" system was initiated whereby parents, after attending a meeting about proper use of the Kiss and Ride, would receive a laminated sign to put in their dashboard indicating they were allowed entry on school property to use the Kiss and Ride to drop off their child(ren). This pass system is still in place this year although one staff member said there were far less issues with negative parent behaviour than in the past.

The Kiss and Ride has at least six staff members on duty, including one at the driveway entrance to allow passholders in, and one at the driveway exit to help pedestrians cross the driveway and to ensure motorists do not make a left turn out of the exit onto Artesian Drive. They are only allowed to go right or straight. There are no "No Left Turn" signs at the exit currently.

**Recommendations:**

1. That the Peel District School Board be requested to install two "No Left Turn" signs with time restrictions (between 8:00 a.m. and 9:00 a.m.) at the driveway exit of Artesian Drive Public School, 3325 Artesian Drive.

2. That parking control be requested to enforce the parking prohibitions along Artesian Drive near Artesian Drive Public School, 3325 Artesian Drive, between 8:00 and 8:30 a.m.

# Kiss & Ride Site Inspection Report

City of Mississauga

Traffic Safety Council

- ☐ Start up Visit  
☐ Follow up Visit

---

## Observers

Observed by: Louise Goegan

Date of Inspection: Day: Tuesday Time: 11:11 AM 11/11/16

Request For: Site inspection of Kiss &amp; Ride program at Darcel Senior Public School

Request By: Traffic Safety

Weather Conditions: ☒ Dry ☒ Cloudy ☐ Rain ☐ Snow ☐ Other: \_\_\_\_\_Equipment provided: ☐ Vests ☐ Cone ☐ Stop Sign ☐ Weight ☐ Other: No teachers were present and no control over driveway was apparent.

---

## Site Conditions

School Name Darcel Senior Public School

Location: Darcel Ave. just east of Morningstar Dr

Hours of Operation: ☒ a.m. ☐ noon ☐ p.m.Facilities: ☐ Day Care Kindergarten (if yes, answer below)

Day Care contact: Phone: \_\_\_\_\_ Phone: \_\_\_\_\_

Type of Driveway: Width: It starts out as a two lane goes down to one lane where the buses come in and then goes to two lanes again in the middle of a small parking lot.

Bus Loading Zone: ☒ on site ☐ off site

Existing Signage: Newly painted but no signage for Kiss &amp; ride was evident

Location of Staff Parking: Small amount of parking available in front of school, larger parking lot in rear

Location of Visitors Parking: no spaces were marked that I could see but there seemed to be extra spaces once the teachers were all there. The location of the handicapped parking seems to be an issue.

---

## Follow up on Kiss & Ride Program

Status of Program: ☐ operates well ☒ needs further follow-up ☐ conflicts ☒ see over☐ Day Care conflict with Kiss & Ride ☐ Kindergarten conflict with Kiss & RideParticipants on Duty: School staff ☐ senior students ☐ parent volunteersVests worn yes ☐ noHours of Operation: a.m. ☐ noon ☐ p.m.Signage required: ☒ yes no

Pavement Markings:      ☒ yes☐ noFollow up Date   /  /    
YY MM DD

Form 1057 (Rev. 06/04)

School Name:    Darcel Senior Public School**Comments / Observations:**

The Kiss & Ride has just been freshly painted but doesn't appear to have any signage. I am not sure that this was intended to be a true Kiss & Ride. The school goes in at 8:40 am with a bell but children do not have to be in class until 8:50. My observation started at 8:30 and there really didn't seem to be too large of vehicular traffic. The concerns that I observed were where students were crossing Darcel from Middleshire Dr., and then interrupting the flow of traffic in the driveway. I do not believe that the school is operating a Kiss & Ride program

**Recommendations:**

1. That the school be contacted to find out if they have ever run a Kiss & Ride program & if they want one.
2. That the Principal be asked to remind students to use the sidewalk entrance to the school instead of cutting across the parking lot and driveway.
3. Contact the District Peel School Board to insert the proper signage for a Kiss & Ride program
4. Contact be made with the school if the program is wanted to implement and educate the staff on the proper running of the program.

Respectfully submitted by: Louise Goegan



# Kiss & Ride Site Inspection Report

City of Mississauga

Traffic Safety Council

- ☐ Start up Visit  
☐ Follow up Visit

---

## Observers

Observed by: **Peter Westbrook**Date of Inspection: **Tuesday, November 15, 2011**

Request For:

Request By: **Parent**Weather Conditions: ☐ Dry ☐ Sunny ☐ Rain ☐ Snow ☐ Other : \_\_\_\_\_Equipment provided: ☐ Vests ☐ Cone ☐ Stop Sign ☐ Weight ☐ Other: \_\_\_\_\_

---

## Site Conditions

School Name: **Thorn Lodge Drive Public School**Location: **2730 Thorn Lodge Drive Public School**Hours of Operation: **9:00 X a.m.** ☐ noon ☐ p.m.Facilities: ☐ Day Care ☐ Kindergarten (if yes, answer below)Type of Driveway: Width: **X 2-lane** ☐ 3-laneBus Loading Zone: **X on site** ☐ off site

Existing Signage:

Location of Staff Parking: **Side of building**Location of Visitors Parking: **Side of building**


---

## Follow up on Kiss & Ride Program

Status of Program: ☐ operates well ☐ needs further follow-up ☐ conflicts ☐ see over☐ Day Care conflict with Kiss & Ride ☐ Kindergarten conflict with Kiss & RideParticipants on Duty: **X School staff** ☐ senior students ☐ parent volunteersVests worn ☐ yes ☐ noHours of Operation: ☐ a.m. ☐ noon ☐ p.m.Signage required: ☐ yes **X no**Pavement Markings: ☐ yes ☐ no Follow up Date 11/11/11  
YY MM DD

Form 1057 (Rev. 06/04)

School Name:

**Comments / Observations:**  
**Recommendations:**

**That the Principal be requested to do the following at Thorn Lodge Drive Public School, 2730 Thorn Lodge Drive:**

- a. Direct school bus drivers to pull up to the Stop Bar of the bus lane when dropping off students.**
- b. That the Staff monitoring the morning drop off be directed to wear safety vests provided by Traffic Safety Council.**
- c. Direct students and parents to use the side entrance of the school.**

# Kiss & Ride Report

Observed by: David Raakman – 2011/11/17

Observed at: Settlers Green Public School – 8:10 – 8:30 a.m.

Weather: cold, sunny, 2°C

Driveway: bus drop-off is separate from Kiss & Ride; Kiss & Ride is two lanes.

Program: Operates extremely well

Participants on duty: nine staff—five unloading cars; two serving to cross students on property and two more to receive bussed students

Vests worn by all 9 supervisors; no cones used.

Signage required: no

Pavement markings: good

No conflicts observed on school property.

## **November 17, 2011**

### **McKinnon Public School (Ward 10)**

The Kiss and Ride program at McKinnon Public School operates very smoothly and could be considered a model for other schools. There are plenty of staff on duty, greeting motorists and pedestrians with smiling faces. The drop-off area along the west side of the school affords space for nine vehicles to unload at a time. This Kiss and Ride an unfortunately high number of vehicles each day, even as the school is part of the school walking routes program, however, the staff are able to move the traffic quickly and efficiently. The only potential problem occurs at the driveway exit when cars are waiting to turn left back onto Tacc Drive or waiting to turn right because of the backlog of vehicles waiting for the traffic signal at Tenth Line and Tacc.

### **Recommendation:**

1. That Transportation and Works be requested to review the timing of the signal lights at Tenth Line and Tacc Drive with a view to increasing the timing for the green signal for motorists (not pedestrians) between 8:15 a.m. and 8:30 a.m. weekday mornings so that more east-bound vehicles can pass through or make turns at this intersection.

**Dismissal Report – October/ November 2011****Attended by: Boris Swedak****October 27, 2011****St. Faustina Catholic School****Ward 10**

A high volume of students were observed walking home from school. School staff assisted with the Dismissal procedure; two staff monitored the School Zone Safety (Kiss and Ride) lane where students were being picked up, one staff member placed cones across the driveway area to the bus lane, and stationed herself at the drive crossing location. This staff member permitted students to cross the drive while stopping exiting vehicles. She then allowed the vehicles to exit the parking area.

No conflicts observed during inspection. All students were well behaved and observed the direction of the monitors. A number of parents continue to ignore the posted signs on McDowell Drive even with the adequate parking on school property.

A number of parents park in the bus lane restricted area even though the pavement is well marked as Bus Only.

Dismissal works well at St. Faustina.

**Recommendation:**

That Parking Enforcement be requested to enforce the parking infractions in front of St. Faustina Catholic School 3420 McDowell Drive, between 3:20 p.m. and 3:45 p.m.

**November 1, 2011****Artesian Drive Public School****Ward 8**

There is public transit in the area which is impacted by the dismissal period as parents park along Artesian Drive which is narrow. Behaviour of motorists was reasonable on school grounds but was not as reasonable on the right of way and along side streets. ‘

A high volume of students was observed walking home. There was much traffic activity and confusion on Artesian Blvd and intersecting side streets. Double parking offences were observed on Artesian Drive.

No conflicts observed this inspection.

Staff assist with bus loading and with monitoring the grounds. Dismissal works at Artesian Drive Public School, and there has been an improvement from a previous inspection in 2010.

During a previous inspection, it was noted that numerous parents were gaining access to the parking lot via exit drive designated as a one way out only. To mitigate this problem cones are now placed at the exit but parents remove the cones and disregard existing exit only sign. The school has limited staff resources and cannot have someone stationed at the exit during Dismissal Period. The Principal is aware of this problem and has sent direction regarding the problem to parents in the past with little success.

Recommendation:

1. That Parking Enforcement be requested to enforce the parking infractions in front of Artesian Drive Public School, 3325 Artesian Drive between 2:50 p.m. and 3:10 p.m., for a minimum of three days.
2. That the Peel District School Board be requested to place two oversized Exit only signs at the exit driveway of Artesian Drive Public School.
3. That the Principal of Artesian Drive Public School be requested to communicate to parents that access to the parking lot via the exit driveway is not permitted.

**November 7, 2011**

**Lisgar Middle School**

**Ward 10**

May students were observed walking home. No conflicts observed during this inspection. Staff assist with monitoring students during the dismissal period. There is a high volume of cars picking students up. No comments to improve the Dismissal procedures as they exist and function well at present.

Recommendation:

That Parking Enforcement be requested to enforce the parking infractions in front of Lisgar Middle School, 6755 Lisgar Drive, between 2:15 p.m. and 2:35 p.m.

**November 8, 2011**

**Brian W. Fleming Public School**

**Ward 3**

Many students were observed walking home. Parents were observed double parking and ignoring posted No Parking and No Stopping signs on Havenwood Drive. No conflicts observed this inspection.

Four volunteers wearing vests assist students with bus loading and marshalling student activity on safety walks. These volunteers are to be complimented for their service.

Minor changes to the School Zone Safety (Kiss and Ride) are required due to a switch in the position of the bus loading and School Zone Safety (Kiss and Ride) lanes. There must be an adjustment of the curb radius at the easterly turn circle to permit full size buses to negotiate the turn without having to reverse. The driveway curb in front of the school must be adjusted to allow buses to make right turns into the new bus storage lane on the north side. Existing signs on Havenwood are faded and should be replaced.

Dismissal works relatively well at this school mainly due to staff who are managing the dismissal procedures.

Recommendation:

1. That the Transportation and Works Department be requested to replace the faded No Stopping and No Parking signs along Havenwood Drive in the vicinity of Brian W. Fleming Public School, 3255 Havenwood Drive.
2. That Parking Enforcement be requested to enforce the parking infractions in front Brian W. Fleming Public School, between 3:15 p.m. and 3:40 p.m.
3. That the Peel District School board be requested to review the following at Brian W. Fleming Public School:
  - a. Repaint the pavement markings.
  - b. Complete the grinding and curb modifications at the easterly turn circle and front driveway to accommodate the changes to the School Zone Safety (Kiss and Ride) and Exclusive Bus lanes.

**November 9, 2011**

**St. Teresa of Avila Catholic School**

**Ward 9**

Many students were observed walking home. Staff assist with bus loading and the marshalling of students on internal walks. St. Teresa of the Child Jesus is a quiet residential school site with an orderly Dismissal period. Parents tend to double park in the exit lane of the driveway but the Principal is attempting to move them along from this area.

Recommendation:

That Parking Enforcement be requested to enforce parking infractions along Montevideo Road and Esprit Crescent, in the vicinity of St. Teresa of Avila Catholic School, 6675 Motevideo Road, between 2:50 p.m. and 3:10 p.m.

**Darcel Avenue Senior Public School**  
**November 15, 2011**  
**Ward 5**

Many students were observed walking home from school. No conflicts were observed during this inspection. Volunteers assisted with loading students onto busses and marshalling students on school grounds. Peel District School Board maintenance staff painted School Zone Safety (Kiss and Ride) lane pavement markings this past summer. There are no street signs adjacent to school on Darcel Avenue, and it is therefore requested that the Transportation and Works Department inspect the area and provide appropriate No Stopping and No Parking signs as required.

Dismissal works well at Darcel Senior Public School however training school staff as this is a new School Zone Safety (Kiss and Ride) facility would have a positive impact on dismissal procedures. Staff should also be provided with safety vests to increase visibility as they perform their tasks.

**Recommendation:**

1. That the Transportation and Works Department be requested to review the feasibility of installing No Stopping and No Parking signs along Darcel Avenue in the vicinity of Darcel Avenue Senior Public School, 7635 Darcel Avenue.
2. That Parking Enforcement be requested to enforce parking infractions in front of Darcel Avenue Senior Public School between 2:40 p.m. and 3:05 p.m.

**November 16, 2011**  
**Holy Cross Catholic School**  
**Ward 5**

Parking on the north side of Morningstar Drive is prohibited but parents continue to store in this lane during the Dismissal period. Staff monitor the dismissal procedure and help load students onto buses. There is a shared driveway exit onto Darrel Avenue which is adjacent to the Church property. Dismissal works fairly well at Holy Cross Catholic School.

There are two crossing guards stationed at the intersection of Morningstar Drive and Darcel Avenue. The Crossing Guards are busy with the high volume of children walking home after school. A minor back up of southbound and westbound turning traffic on Darcel Avenue and of eastbound left turning traffic on Morningstar Drive and Darcel Darcel Avenue was observed due to a high volume of Children crossing during the light change with few gaps for turning traffic. A very high volume of students were observed walking home at Dismissal. No conflicts observed during this inspection.

Recommendation:

1. That the Transportation and Works Department be requested to review the No Parking and No Stopping signs along Darcel Avenue and Morningstar Drive for students attending Holy Cross Catholic School, 3615 Morningstar Drive.
2. That Parking Enforcement be requested to enforce parking infractions along Darcel Avenue and Morningstar Drive between 2:50 p.m. and 3:10.



**Laura Wilson**

---

**From:** Boris Swedak  
**Sent:** October 27, 2011 1:36 PM  
**To:** Laura Wilson  
**Subject:** Fw: St Faustina Catholic School Dismissal

## St. Faustina Dismissal Report

Address 3420 McDowell Drive

Zone Z-57W

School ID # 195

Phone [905] 821-2607

School Grades JK-8

Date of Inspection- Wednesday , October 26th., 2011

Weather—Drizzle , 5 Deg. C

Dismissal time-3:30 PM

Adjacent to Park-Yes

Public Transit--Yes, but in no way does it impact Dismissal Period

School Transport- 5 cube vans, 1 full size bus

Parent Behavior--Very Good

Parking--3 very long rows of parking at west side of school, parking in Lay-by on south side of McDowell Dr., additional parking on side streets intersecting with McDowell, parents store in the kissn' ride lane during afternoon time period

Signs-- Very well signed on McDowell Dr. and on school property.

Kissn' Ride -Yes , 2 lane one way layout at the west side of school, total separate from the exclusive bus lane sited on the north side of the building at the front entrance.

Comments:

6f

**A high volume of students observed walking home from school**

**School staff assist with the Dismissal procedure, two monitored the Kissn' Ride lane where students were being picked up in autos. A staff member placed cones across the common drive area to the bus lane, and stationed herself at the drive crossing location. She permitted students to cross the drive while stopping exiting vehicles. She then allowed the autos to exit the parking area**

**No conflicts observed during inspection**

**All students were well behaved and observed the direction of the monitors,**

**A number of parents continue to ignore the posted signs on McDowell Dr. even with the adequate parking internal to the school property**

**A number of parents park in the bus lane restricted area even though the pavement is well marked  
as Bus Only**

**Dismissal works well at St. Faustina**

**Recommendations:**

**1. That Parking control Officer visit St. Faustina during Dismissal [3:20-3:45 PM] to ensure compliance with the posted signs on McDowell Dr..**

**Boris Swedak  
Traffic Safety Council  
Ward 3  
Citizen Member**

**From:** Boris Swedak  
**Sent:** November 4, 2011 1:06 PM  
**To:** Laura Wilson  
**Cc:** Sheelagh Duffin; Marcotte David; Lethbridge Edgar; Fryers Doug  
**Subject:** Fw: Artesian Dismissal Report

## Dismissal Report

### Artesian Drive Public School

Address- 3325 Artesian Dr.

Phone No. [905] 820-7786

Z # 58

ID # 207

Grades -- K-5

Dismissal Time--3:00 PM

Date of Inspection - November 1, 2011

Weather- Sunny, 12 deg.C

Adjacent to Park- Yes

Public Transit- Yes, and it does impact on Dismissal as cars parked on Artesian Dr. narrow the travel lane.

School Transport- 2 cube vans, 3 full size buses

Parent Behavior- Reasonable on school grounds, not so much on the right of way and side streets.

Parking- Single row of parking at right angles to front entry drive on the south side of school; in the street lay-by on the North side of Artesian Blvd; Main lot consisting of 2 long rows of parking on West limit of property.

6h Kissn' Ride- Yes a 2 lane one way drive located at the west side of school, separate from the bus exclusive storage in front of school. Parents not permitted entry to drive in the afternoon

Signs- All posted signs on school & on Right of way are in place .

## Comments:

Very heavy volume of students observed walking home from this site.

Lots of activity and confusion of traffic on Artesian Blvd and especially on the intersecting side streets.

Double parking offences taking place on Artesian Dr.

No conflicts observed this inspection.

Staff assist with bus loading and grounds monitoring.

Dismissal works at Artesian P.S., an improvement over previous inspection in 2010

At an inspection for crossing guard warrants at driveway exit, it was noted that numerous parents were gaining access to the parking lot via exit drive designated as a one way out only.

I spoke to the secretary and left message with her to have the principal call regarding this situation. Cones are placed at the exit location but parents remove same and disregard existing exit only sign. School has limited staff resources and cannot have staff stationed at the exit during Dismissal Period.

The Principal is aware of this problem and has sent direction regarding the problem to parents in the past with little success.

## Recommendations:

1. That Parking Control Officer visit this site for a minimum 3 day period during Dismissal Period [2:50- 3:10 PM ] to remedy the parking infractions on Artesian Dr..
2. That Peel Public Maintenance Staff , , place Two Oversized Signs at the drive exit facing Artesian Dr., indicating Exit Only.

6i  
3. That the Principal of Artesian P.S. indicate to the parent that the practice of gaining vehicular access to the parking lot via exit drive will not be permitted to continue.

Boris Swedak  
Traffic Safety Council  
Citizen Member  
Ward 3

6j

**Laura Wilson**

---

**From:** Boris Swedak |  
**Sent:** November 8, 2011 5:35 PM  
**To:** Laura Wilson  
**Subject:** Fw: Lisgar Middle School Dismissal Report

## Lisgar Middle School Dismissal Report

Address- 6755 Lisgar Dr.

School ID # 177

Area Map - Z 56

Grades 6-8

Dismissal time - 2:25 PM

Date of Inspection November 7th. 2011

Weather - Sunny , 15 deg. C

Adjacent to Park- Yes

Public Transit- Yes, but no impact on dismissal program

School Transport--2 full size buses, 2 cube vans,

Signs--In place and adequate on both right of way and school property, some require replacement on school site as they are badly faded

Parent Behavior--Acceptable

Kissn' Ride lanes- Yes, a standard 3 lane ,one way configuration with entry to the south of school. Exclusive bus lanes marked and located adjacent to curb.

Parking: On the east side of Lisgar Dr., on the two intersecting side streets, in the outside lane of the 3 lane driveway marked as a through lane, large parking pod at the southerly limit of site containing 6 rows of staff and visitor parking.

Comments:

Lots of walkers observed leaving school during Dismissal

6K

No conflicts observed during this inspection

Staff assist with student monitoring on site

Dismissal works well at Lisgar Middle School

High volume of autos noted during Dismissal

No comments to improve the Dismissal procedures as they exist at present

Recommendations:

1. That Parking Control Officer visit this site during Dismissal period [2:15---2:35 PM] to enforce the posted "no stopping signs" on Lisgar Dr. in the vicinity of the school

Boris Swedak  
Traffic Safety Council  
Citizen Member  
Ward 3

**Laura Wilson**

---

**From:** Boris Swedak  
**Sent:** November 8, 2011 5:36 PM  
**To:** Laura Wilson  
**Subject:** Fw: Brian W Fleming Dismissal

### Dismissal Report

School Name ---- Brian W. Fleming

Address --3255 Havenwood Drive

Phone No. [905] 625- 3220

Z # 19 ID # 29

Grades ---K-5

Dismissal Time- 3:30 PM

Date of Inspection --November 8th. , 2011

Weather-Overcast 14 deg. C

Adjacent to Park-Yes

Public Transit- No

School Transport ----- 3 full size buses

Parent Behavior—Acceptable on school property, not so much on the street

Parking-main parking lot is located to the north- east at rear of school, additional single lane at right angles

to entry drive & adjacent to north drive exit, parents store in front of school adjacent to curb,

parking on west & east sides of Havenwood Drive where ever they stop..



Kiss'n Ride- moved from north side of school to in front of school, a 2 lane , one way, 6m  
crescent drive  
which requires painting to reflect K & R lane, and a through lane.  
Bus lane moved to north side of school and requires removal of existing paint  
designating K & R and  
to be marked as exclusive bus lane. Signs designating bus loading require moving as  
well

Signs- Bus loading signs to be relocated from in front of school to the north side, Kiss'n  
Ride  
& Bus lanes switched and require repainting of both areas

Comments:

Lots of walkers

Double parking and parents ignore posted no parking/no stopping signs on Havenwood  
Dr.

No conflicts observed this inspection

4 vested volunteers assist students with bus loading and marshalling their activity on  
safety  
walks, to be complimented for their service

Minor revisions required to be undertaken by Peel Maintenance due to switch in  
position  
of bus loading & K & R sites

Adjustment of curb radius at easterly turn circle to permit full size buses to negotiate  
turn  
without reversing at this point.

Revision of drive curb in front of school drive to allow buses to make right turn into their  
new storage  
lane on north side.

Existing signs on Havenwood badly faded and require replacement by T & W

Dismissal works relatively well at this school mainly due to staff taking positive role in  
managing  
same

Recommendations:

1. That T & W replace the existing No Stopping, No Parking signs on Havenwood Dr.  
which are badly faded, & review the adequacy of these signs in the vicinity of Brian W  
Fleming P.S.

6n

2. That Parking Control Officer visit this location and enforce the existing No Stopping/No Parking signs on Havenwood Dr. during Dismissal Period [3:15- 3:40 PM.]

3. That Peel Maintenance perform the necessary repainting, grinding and curb modifications at the easterly turn circle & front drive to accomodate the switch in location of the K & R lane and the exclusive bus lane.

Boris Swedak  
Traffic Safety Council  
Citizen Member  
Ward 3

**Laura Wilson**

---

**From:** Boris Swedak  
**Sent:** November 9, 2011 6:34 PM  
**To:** Laura Wilson  
**Subject:** Fw: St Teresa of Avila Dismissal Report

## St. Teresa of Avila Dismissal Report

Address 6675 Montevideo Rd

School ID # 142

Phone: [905] 858- 3462

School Grades JK – 8

Zone Z46 W

Date of Inspection –Wednesday November 9th. , 2011

Dismissal Time 3:00 PM

Weather -Overcast,showers 12 deg. C

Adjacent to Park - Yes

Public Transit -Yes , but does not impact on Dismissal

School Transport – 1 full size bus , 2 dodge caravans

Signs & Pavement Marking - well marked and very visible on school property

Parent Behavior Very good

Parking - 2 areas assigned for parking on school property,small pod consisting of 3 rows

6P in front of school, 3 additional rows on south side of school just off the entrance location.

Parking on the east side of Montevideo Rd.

Kissn' Ride Yes, a two lane layout drive totally separated from the bus parking located in front of the school, just east of the exit drive.

#### Comments

Many students observed walking home from St. Teresa of Avila

Staff assist with bus loading and marshalling of students on internal walks.

No conflicts observed during my inspection this date

A very quiet residential school site with an orderly Dismissal period.

Parents tend to double park in the exit lane of drive ,Principal is attempting to move them along from this area.

#### Recommendations

1. That Parking Control Officer visit this site during Dismissal period [2:50-3:10 PM] to enforce the posted signs on Montevideo Rd. in the vicinity of St Teresa of Avila School

Boris Swedak  
Traffic Safety Council  
Citizen Member  
Ward 3

From: Boris Swedak  
Sent: November 15, 2011 7:10 PM  
To: Laura Wilson  
Subject: Fw: Darcel Sr. P.S. Dismissal

### Dismissal Report

School Name- Darcel Sr. Public School

Address-7635 Darcel Ave.

Phone No. [905] 677-3802

Z # 47 E

ID # 15

Grades 6-8

Dismissal Time- 2:50 PM

Date of Inspection – November 15th., 2011

Weather- Sunny, 12 degrees . C

Adjacent to Park- Yes,at rear of school

Public Transit- Yes, but no impact on Dismissal period

School Transport- 1 cube van,1 dodge caravan

Parent Behavior-Good

Parking- Main parking lot is at the south end of the property consisting of 2 lanes, parents park on either side of long one way exit drive, plus parking on the south side of Darcel Ave., & 2 additional rows at right angles to main exit drive

Kissn' Ride- A newly painted drop off area adjacent to curb & a wide one way through lane  
so defined

6r Signs- In place and adequate both on the school property

Comments:

Many students observed walking from school

No conflicts during this inspection

Volunteers assist with bus loading and marshalling of students on school ground.

Peel maintenance staff painted K & R markings over this past summer

A complete absence of street signs on Darcel Ave adjacent to school, request T & W to inspect area and provide appropriate no stopping, no parking as required,

Dismissal works well at Darcel Sr. P.S.

Perhaps training of school staff in order as this is a new K & R facility. Providing staff with Proper Vests to increase visibility as they perform their tasks.

Recommendations:

1. That T & W review the signage requirement on the Right of Way of Darcel Ave in front of school & install same as required.
2. That Parking control visit this location on Darcel Ave. during the afternoon Dismissal Period [2:40-3:05 PM] to enforce existing Signs

Boris Swedak  
Traffic Safety Council  
Citizen Member  
Ward 3

**Laura Wilson**

---

**Subject:** FW: Holy Cross Dismissal Report

---

**From:** Boris Swedak [mailto:]  
**Sent:** November 16, 2011 7:21 PM  
**To:** Laura Wilson  
**Subject:** Fw: Holy Cross Dismissal Report

Holy Cross Catholic School Dismissal Report

Address- 3615 Morningstar Dr.

Ph. [905] 677-5660

Z 47& 48

ID # 93

Grades JK-8

Dismissal time -3:00 PM

Weather- Overcast 10 deg. C

Date of Inspection November 16th. 2011

Adjacent to Park--No

Public Transit--Yes, with minor impact on Dismissal

School Transport- 1 cube van, 1 full size bus

Signs-- Adequate & in place on both right of way & on school property.

*Kiss'n Ride-- Yes, on west side of school site. A two lane, one way system entering off Morningstar Dr. and exiting onto Darcel Av..*

*Parking--West side of school, 2 rows of parking straddling the K& R and through exit lane.*

6T *Parents fill all available parking spots on site 20 minutes prior to dismissal and park on the north side of Morningstar Dr., a main collector as well as on Darcel Av..*

*Parental Behavior--Acceptable*

*Comment:*

*Parking on the north side of Morningstar Dr. is prohibited but parents are utilizing this lane to store in during Dismissal time frame..*

*Staff monitor the dismissal procedure and aid in the loading of students onto the buses.*

***Shared driveway exit onto Darrel Av. is over adjacent Church property***

***Dismissal works fairly well at Holy Cross.***

There are two crossing guards stationed at the Morningstar/Darcel intersection. These xing guards are kept busy with the high volume of children walking home after school.

Minor back up of southbound/ westbound turn traffic on Darcell Ave. & on eastbound left turn Morningstar /Darcel intersection traffic due to high volume of Children crossing during light change with few gaps presenting for autos.

A very, very high volume of students observed walking home at Dismissal.

No conflicts observed during this afternoon's inspection

Recommendations

1. That T & W review adequacy of signs and condition of same on both Darcel Av & Morningstar Dr., to adequately enforce no parking and stopping prohibitions.
2. That Parking Control Officer visit this school location [ 2:50- 3:10 PM] to enforce the existing posted signs located on both Darcel Av. & Morningstar Dr.

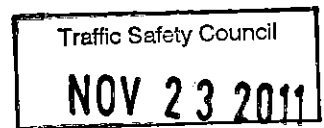
Boris Swedak  
Traffic Safety Council  
Citizen Member  
Ward 3



November 17, 2011

To: Traffic Safety Council

Re: Derry West Village Public School, 620 Twain Avenue, Ward 11

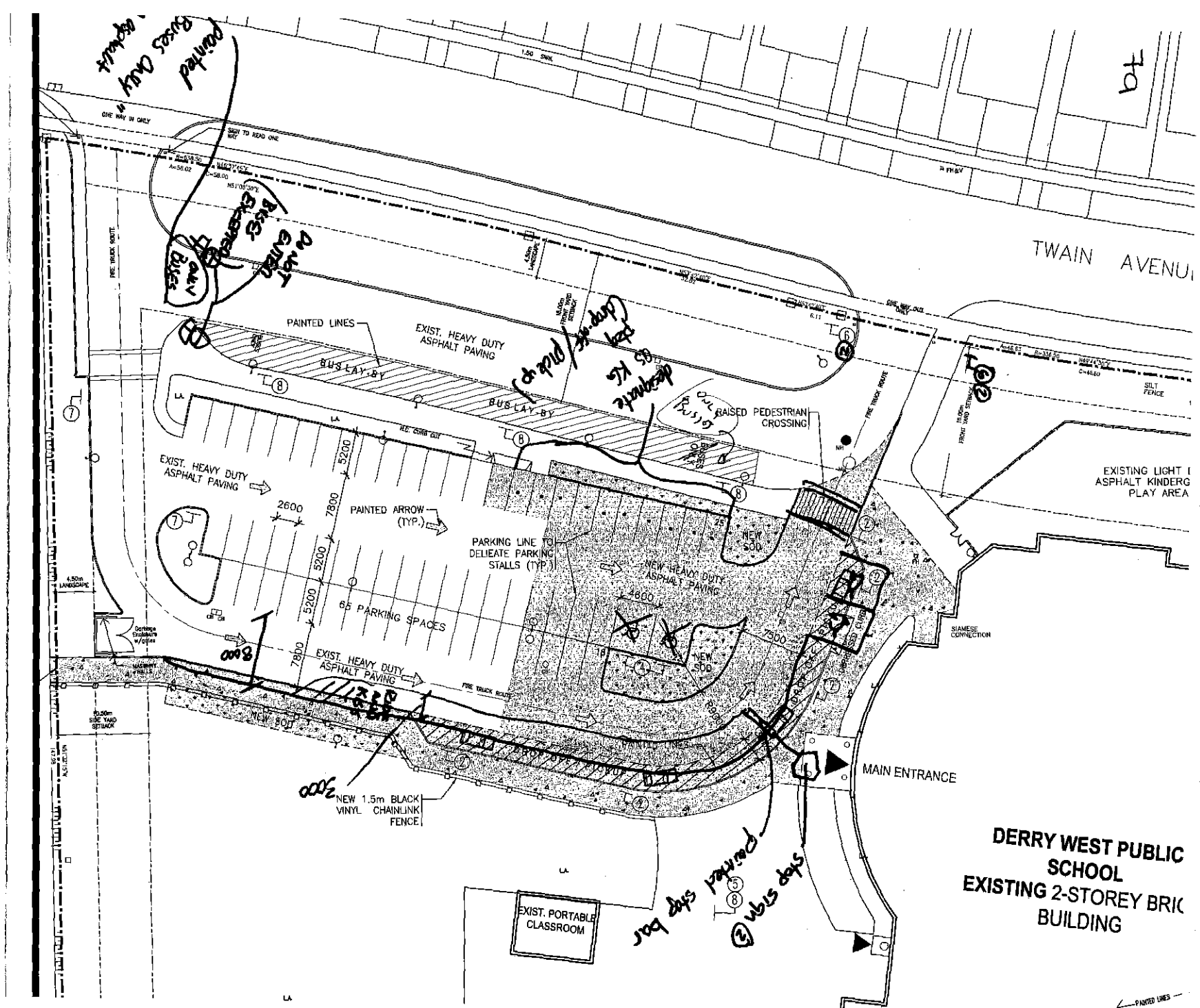


The Site Plan Review Subcommittee of Traffic Safety Council has reviewed the proposed Site Plan for Derry West Village Public School, 620 Twain Avenue, Ward 11, and would recommend the following:

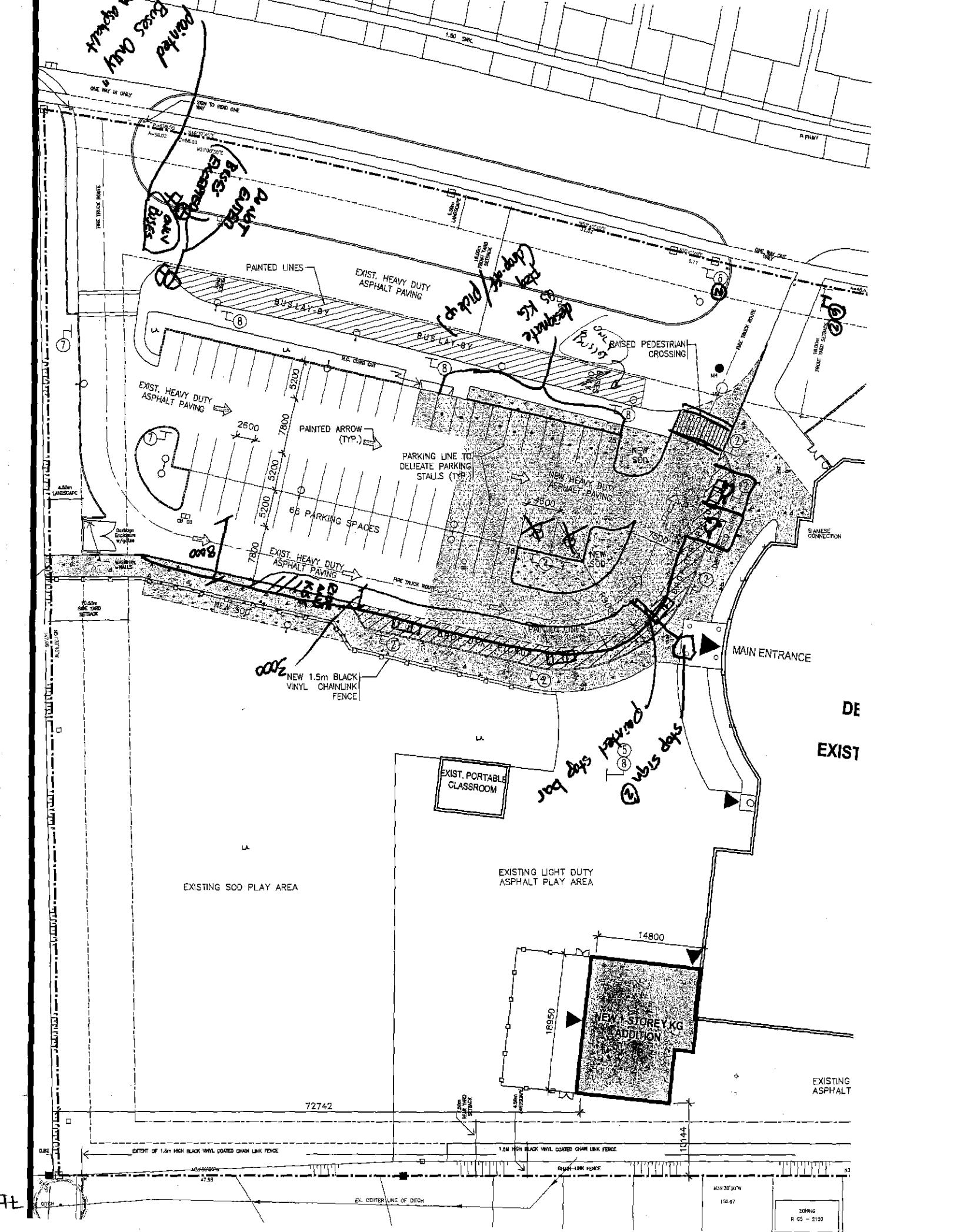
That the Commissioner of Planning and Building be advised that with respect to the proposed Site Plan for Derry West Village Public School, 620 Twain Avenue, Ward 11, that the Traffic Safety Council Site Plan Review Subcommittee reviewed the site plan on November 17, 2011 and would recommend the following:

1. That the outgoing School Zone Safety (Kiss and Ride) driveway be widened by eight meters.
2. That School Zone Safety (Kiss and Ride) Lane pavement markings be painted on the driveway.
3. That a Stop Bar and Stop Sign be installed at the end of the School Zone Safety (Kiss and Ride) drop off lane in close proximity to the entrance.
4. That the Peel District School Board consider relocating the accessible parking spaces to the school side of the driveway.
5. That Do Not Enter and Busses Excepted signs be installed at the entrance of the exclusive bus lane.
6. That a Busses Only pavement marking be painted at the entrance of the exclusive bus lane.
8. That a Do Not Enter sign be installed at the easterly side of the exit driveway facing Twain Avenue.
9. That at both sides of the exit driveway, Stop Signs be installed on the reverse side of the Do Not Enter signs.
10. That the Peel District School Board consider designating up to ten parking spaces for Kindergarten drop off and pick up at the north east corner of the new parking area.
11. That the revised site plan indicate a lock gate at the school property's west boundary where the sidewalk extends to a City of Mississauga walkway.
12. That the Peel District School Board use the school's new edition for Senior Kindergarten students to facilitate the drop off and pick up of Junior Kindergarten students.

David Brown, David Raakman, Boris Swedak, Peter Westbrook  
Site Plan Review Subcommittee of  
Traffic Safety Council



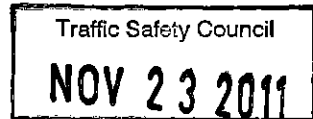
**DERRY WEST PUBLIC  
SCHOOL  
EXISTING 2-STOREY BRICK  
BUILDING**



8

**TRAFFIC SAFETY COUNCIL**  
**WALK TO SCHOOL SUBCOMMITTEE**

**MINUTES**



**THURSDAY, NOVEMBER 10, 2011 –10:30 A.M.**

**OFFSITE**

**MEMBERS:**

Peter Westbrook (Citizen Member Ward 2)  
Louise Goegan (Citizen Member Ward 5)

**STAFF MEMBERS:**

Sheelagh Duffin, Crossing Guard Supervisor  
Denna Yaunan, Traffic Operations Technician  
Laura Wilson, Legislative Coordinator

**ITEMS FOR DISCUSSION:**

1. Display Board Options and Pricing

Discussion ensued with respect to the benefits and drawbacks of the current display board that the Walk to School subcommittee borrowed from the Transportation and Works Department. Sheelagh Duffin, Crossing Guard Supervisor suggested that the subcommittee purchase two smaller boards that could be hinged together to create a larger display board if it was required. Ms. Duffin noted that the two boards would cost \$954.85 which was within the amount approved by Traffic Safety Council for purchase of the display board.

The subcommittee discussed the colour of the board and Ms. Duffin volunteered to forward the colour choices to the other members of the subcommittee for their review.

It was decided that with the purchase of the display board, the subcommittee would go through the materials posted on the board and update information if required.

2. Promotional items - Pricing for additional pencils, new pencils

Discussion ensued with respect to the purchase of pencils for distribution at School Walking Routes events. The subcommittee unanimously agreed to purchase the same green pencils that had been purchased in the spring of 2011. Sheelagh Duffin, Crossing Guard Supervisor noted that the cost for 10 000 pencils would be approximately \$2, 712.00. The subcommittee also discussed other promotional items that would be appropriate for distribution at School Walking Routes events.

3. Promotion of Winter Walk Day

It was noted that this event would be promoted online and the subcommittee decided to use the online information and adapt it for use on a poster which would promote the Winter Walk Day and the School Walking Routes Program. It was decided that a letter would also be sent to schools to promote the event.

4. School Recruitment for the School Walking Routes Program

It was noted that the School Walking Routes Program would be launched at St. Gertrude and St. Matthew in the spring of 2012. Louise Goegan, subcommittee Chair noted that Barondale Public School and San Lorenzo Catholic School would also be good candidates for the program. Sheelagh Duffin, Crossing Guard Supervisor reminded the subcommittee that Cooksville Creek Public School and Corsair Public School had been considered by the subcommittee in the past and that they were also good candidates for the program.

5. Power Point Presentation

The Legislative Coordinator was requested to make specific changes to the School Walking Routes Program Power Point Presentation. It was agreed that once the changes were made, the presentation would be distributed to the subcommittee for their review.

Other Business

Nil

Adjournment

11:30 a.m.



## TRAFFIC SAFETY COUNCIL

Mississauga's **Traffic Safety Council** has existed for over fifty years. This advisory committee considers matters related to the safety of students and their movement through the City of Mississauga. This committee reviews issues and makes recommendations to Council regarding Crossing Guards and other measures to manage school zone and school site traffic, designed and intended to protect elementary and secondary school students from the dangers of vehicular traffic or related hazards. As well, the Traffic Safety Council works in cooperation with other committees of Council on issues regarding pedestrian safety throughout the City of Mississauga.

The membership of the Mississauga Traffic Safety Council is appointed by Council and is comprised of the following:

- 3 Councillors
- 2 School Board Trustees  
(1 from Peel District School Board and 1 from Dufferin-Peel Catholic District School Board)
- Up to 2 Members for Life
- 11 Citizens  
(Representing the eleven (11) wards in the City)
- 3 Citizens at large  
(2 appointed to the North Zone and 1 appointed to the South Zone)

The Traffic Safety Council has an Advisory Board comprised of:

- Manager of Student Transportation (or Designate), Peel District School Board/Dufferin-Peel Catholic District School Board
- Representative(s) of the Principals= /Vice-Principals= Association (1 from the Peel District School Board and 1 from the Dufferin-Peel Catholic District School Board)
- Traffic Operations staff, Transportation & Works Department
- Crossing Guard Supervisor, Transportation & Works Department
- Parking Enforcement, Transportation and Works Department

Other Mississauga staff and external agencies are required on a regular basis to attend meetings when a matter of interest is on the Traffic Safety Council agenda that warrants their respective participation. These include but are not limited to:

- Peel Regional Police, Traffic Services
- Projects Coordinator, Dufferin-Peel Catholic District School Board
- Maintenance Services, Peel District School Board
- City of Mississauga Planning and Building staff

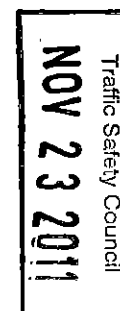
## For Information in this Handbook regarding Traffic Safety Council:

page 21	Crossing Guards
page 22	School Safety Patrollers
page 23	Kiss and Ride Program
page 24	Flashing 40km/hr Zones
page 24	Walk to School
page 25	School Zone Parking

**Phone:** (311) or if calling outside the City limits  
call 905-615-4311  
7:00a.m. – 7:00p.m., Monday to Friday

**E-Mail:** [traffic.safety@mississauga.ca](mailto:traffic.safety@mississauga.ca)

**Website:** [www.mississauga.ca/portal/residents/trafficsafetycouncil](http://www.mississauga.ca/portal/residents/trafficsafetycouncil)



## ENHANCED PAVEMENT MARKING

In an effort to enhance the pavement markings at intersections with existing crosswalks, the Transportation and Works Department developed an Enhanced Pavement Marking application in 2006. Durable pavement markings are being used to paint "zebra stripe" crosswalk markings between the longitudinal lines installed across the pedestrian crosswalk. The increased reflective pavement marking material enhances the visibility of the crosswalk for motorists and pedestrians during the day and night.

Between 2006 and 2010 more than 130 locations through the City were enhanced with zebra striped crosswalks.



## CROSSING GUARDS

Crossing guards are City of Mississauga staff and are responsible for safely crossing Mississauga elementary school children to and from school. As of 2011, there are approximately 210 Crossing Guards at 160 locations throughout the City.

Crossing guard locations are reviewed and recommended by the Mississauga Traffic Safety Council advisory committee and approved by Mississauga City Council. They are on duty three times a day at locations determined by the Mississauga Traffic Safety Council based on the results of a site inspection and gap study. At the site inspections a variety of observations are made including:

- the posted speed limit
- parking patterns
- the presence of sidewalks and traffic signals, etc.

The gap study includes calculations and observations on traffic volume, the number of safe gaps in traffic for students to safely cross the road, the number of crossing students and any vehicle/student conflicts.



If you are interested in having a site inspection conducted in your area for a crossing guard:

Determine and make notes of the following information:

- Name of school
- The intersection or location where you would like a crossing guard
- Reason(s) for your request
- Your name, address and phone number

**Contact:** Traffic Safety Council - Legislative Coordinator

**Phone:** **(3-1-1)** or if calling outside the City limits  
call 905-615-4311  
7:00a.m. – 7:00p.m., Monday to Friday  
or 905-615-3200 ext. 5425

**Email:** [traffic.safety@mississauga.ca](mailto:traffic.safety@mississauga.ca)

**Website:** [www.mississauga.ca/crossingguards](http://www.mississauga.ca/crossingguards)

### SCHOOL SAFETY PATROLLERS

**Foot patrollers** monitor school crossings on roads around schools. These safety specialists keep students from entering the roadway when it is unsafe to cross and they remind students of safe crossing rules. Unlike crossing guards, patrollers don't stop or direct traffic.

**Phone:** (905) 453-3311 ext. 4071  
Peel Children's Safety Village c/o Peel Regional Police  
**Email:** admin@peelsafetyvillage.on.ca  
**Website:** www.caasco.com/community/safety-patrol-program

**Bus patrollers** help the bus operator get passengers to their destinations in a safe and orderly fashion. The patroller does this by encouraging responsible behavior among students while riding the bus and by controlling the embarking and disembarking of students in accordance with the bus operator's instruction

### CAA School Safety Patrol

CAA School Safety Patrol is a joint partnership between CAA, Peel Regional Police, school boards, teachers, parents and dedicated elementary school student volunteers. Student volunteers give their time to ensure their peers remain safe at road crossings and on school buses in Mississauga. Safety patrollers have been trained by the Peel Regional Police to use potentially life-saving skills while on duty.



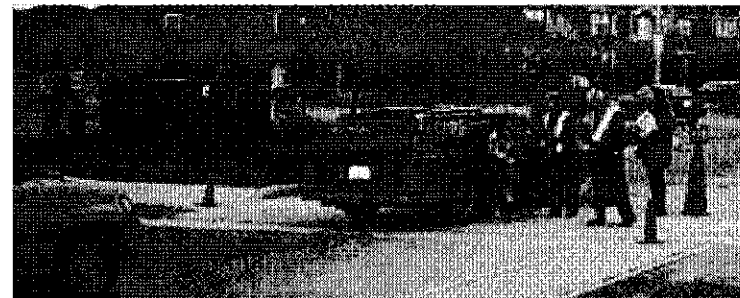
### School Safety Patroller Contact:

Peel Children's Safety Village c/o Peel Regional Police

**Phone:** 905-453-3311 ext. 4072  
7:00a.m. – 7:00p.m., Monday to Friday  
**Email:** admin@peelsafetyvillage.ca  
**Website:** www.mississauga.ca/schoolsafetypatroller

### KISS&RIDE PROGRAM

Initiated by the Mississauga Traffic Safety Council in 1996, this program provides the safe drop-off of a child to the school door or playground under the supervision of school staff and/or parent volunteers.



The parent enter the Kiss&Ride lane and stops where indicated. A volunteer wearing a Kiss&Ride orange vest opens the vehicle door on the passenger side and ensures the child or children are safely on the school sidewalk. Where in operation, the Kindergarten program volunteers wearing green vests accompany JK and SK children safely to the kindergarten area.

Schools with Kiss&Ride and Kindergarten programs have improved traffic flow and ultimately a safer environment for the children. As of 2011, 123 Kiss&Ride programs are currently in operation.

The Mississauga Traffic Safety Council advisory committee provides each school that is starting up the Kiss&Ride program with a safety cone, stop sign, safety vests and an information package including a Kiss&Ride video.

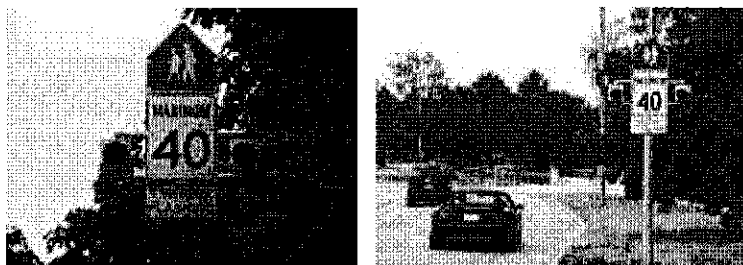
**Contact:** Traffic Safety Council  
**Phone:** **4311** or if calling outside the City limits  
call 905-615-4311  
7:00a.m. – 7:00p.m., Monday to Friday  
**Email:** traffic.safety@mississauga.ca  
**Website:** www.mississauga.ca/kissandride



**FLASHING 40KM/HR ZONES**

The City of Mississauga has implemented "40 km/hr when flashing" in school zones only on major collector and arterial roads. These zones reduce the speed limit to 40 km/hr when the flasher is activated from September 1st to June 30th. The use of these zones has resulted in improvements in speed limit compliance.

**Website:** [www.mississauga.ca/flashing40zones](http://www.mississauga.ca/flashing40zones)

**WALK TO SCHOOL**

Peel Safe and Active Routes to School program designed to reintroduce parents, children, school staff and other community members to the joy of walking. Reviving an old trend of walking to school reduces traffic congestion in front of schools and has a positive impact on our health, safety and environment.

**Contact:**

Peel Region Health Unit

**Phone:** 905-799-7700



International Walk to School Day is an annual event occurring the first Wednesday of every October. Greenest City's Walk to School Day and the Safe and Active Routes to School Program, supported by the Region of Peel, Mississauga Traffic Safety Council, Dufferin-Peel Catholic District School Board and Peel District School Board, are tackling safety and health issues by reintroducing and promoting active transportation (walking, biking, blading) to school communities throughout Ontario.

**Websites:** [www.mississauga.ca/walktoschool](http://www.mississauga.ca/walktoschool)  
[www.saferoutestoschool.ca](http://www.saferoutestoschool.ca)

**SCHOOL ZONE PARKING**

Most school zones in the City of Mississauga prohibit parking and/or stopping in school zones for the safety of students. The City of Mississauga has increased parking fines within all school zones. Parking/stopping illegally in a school zone is vigorously enforced through the City of Mississauga Traffic By-law.

A school zone area is defined as the portion of road approximately 150 metres (492 feet) in either direction from the school boundary along the front of the property.



NOV 23 2011

# Memorandum



---

**TO:** Chair and Members of Traffic Safety Council

**FROM:** Sheena Rodda, Manager of Parking Enforcement

**DATE:** November 1, 2011

**SUBJECT:** **Parking Enforcement in School Zones Month of October 2011**

---

During the month of October 2011 Parking Enforcement staff carried out enforcement in school zones with the following results:

Total number of schools patrolled:	46
Total number of patrols:	123
Total number of infraction notices issued:	181

The attached report indicates the schools patrolled for the month of October.

Sincerely,

Sheena Rodda  
Manager, Parking Enforcement

SR:mb

Attach.

# School Patrols - October 2011

School	Complainant	Date Patrolled	AM	PM	Tickets Issued
ASHGROVE P.S 3215 THORNCREST DRIVE	TS COUNCIL	27-Oct-11	0	1	0
BARONDALE PS 200 BARONDALE DRIVE	TS COUNCIL	3-Oct-11	0	1	2
		7-Oct-11	1	1	3
			0	1	0
		11-Oct-11	0	1	1
		13-Oct-11	1	0	0
			0	1	0
BRIARWOOD PS 1065 MISSISSAUGA VALLEY BLVD	TS COUNCIL	4-Oct-11	0	1	1
		5-Oct-11	0	1	1
			0	1	1
		17-Oct-11	0	1	0
			0	1	3
BRITANNIA PS 1145 SWINEBOURN DRIVE	TS COUNCIL	5-Oct-11	0	1	12
			1	0	3
		11-Oct-11	1	0	5
		14-Oct-11	1	0	2
BROOKMEDE PS 2250 COUNCIL RING ROAD	TS COUNCIL	7-Oct-11	1	1	2
BURNHAMTHROPE PS 3465 GOLDEN ORCHARD DRIVE	TS COUNCIL	14-Oct-11	0	1	2
			0	1	0
CANADIAN MARTYRS SCHOOL 1185 MISSISSAUGA VALLY BLVD	TS COUNCIL	12-Oct-11	0	1	1
CASTLEBRIDGE P.S 2801 CASTLEBRIDGE DRIVE	TS COUNCIL	4-Oct-11	0	1	2

School	Complainant	Date Patrolled	AM	PM	Tickets Issued
School	Complainant				
CHAMPLAIN TRAIL PS 895 CEREMONAIL DRIVE	TS COUNCIL	24-Oct-11	0	1	1
		27-Oct-11	0	1	0
			0	1	0
		31-Oct-11	0	1	2
CLARKSON PS 888 CLARKSON ROAD SOUTH	TS COUNCIL	3-Oct-11	0	1	0
			0	1	0
CORLISS CRES 3730 CORLISS CRES	TS COUNCIL	25-Oct-11	0	1	2
			0	1	0
CREDIT VALLEY P.S 2365 CREDIT VALLEY ROAD	TS COUNCIL	18-Oct-11	0	1	0
			0	1	0
		19-Oct-11	1	0	3
		21-Oct-11	0	1	0
			0	1	5
DARCEL AVENUE PS 7635 DARCEL AVENUE	TS COUNCIL	12-Oct-11	0	1	0
DERRY WEST VILLAGE 620 TWAIN AVENUE	TS COUNCIL	19-Oct-11	1	1	7
			0	1	6
DOLPHIN SENIOR PS 18 BROOKSIDE DRIVE	TS COUNCIL	7-Oct-11	0	1	0
FAIRVIEW PS 3590 JOAN DRIVE	TS COUNCIL	11-Oct-11	0	1	7
		12-Oct-11	0	1	1
FALLINGBROOK MIDDLE SCHOOL 5187 FALLINGBROOK DRIVE	TS COUNCIL	18-Oct-11	0	1	0
FLORADALE P.S 210 PAISLEY BLVD W	TS COUNCIL	24-Oct-11	0	1	4
			0	1	2

School	Complainant	Date Patrolled	AM	PM	Tickets Issued
School	Complainant				
FOREST AVENUE PS 20 FOREST AVENUE	TS COUNCIL	20-Oct-11	0	1	0
		21-Oct-11	0	1	0
			0	1	0
FOREST GLEN 3400 PONY TRAIL	TS COUNCIL	27-Oct-11	0	1	2
FLORADALE P.S 210 PAISLEY BLVD W	TS COUNCIL	4-Oct-11	0	1	2
			0	1	2
		5-Oct-11	0	1	1
HUNTINGTON RIDGE P.S 345 HUNTINGTON RIDGE	TS COUNCIL	17-Oct-11	0	1	1
			0	1	1
KINDREE SCHOOL 7370 TERRAGAR BLVD	TS COUNCIL	5-Oct-11	1	0	4
		11-Oct-11	0	1	4
LANCASTER PS 7445 NETHERWOOD ROAD	TS COUNCIL	14-Oct-11	1	1	3
		18-Oct-11	1	1	1
		19-Oct-11	1	0	2
			0	1	2
		20-Oct-11	1	1	3
		21-Oct-11	0	1	1
		31-Oct-11	1	1	1
LORNE PARK PS. 1325 INDIAN ROAD	TS COUNCIL	14-Oct-11	0	1	0
			0	1	1
LYNDWOOD P.S 498 HARTSDALE ROAD	TS COUNCIL	3-Oct-11	0	1	0
		7-Oct-11	0	1	0
			0	1	0
MAPLEWOOD PS 2650 GANANOQUE	TS COUNCIL	7-Oct-11	0	1	0
		18-Oct-11	0	1	0

School	Complainant	Date Patrolled	AM	PM	Tickets Issued
PLUM TREE 6855 TENTH LINE WEST	TS COUNCIL	03-Oct-11	1	0	3
		04-Oct-11	1	0	1
RICK HANSEN S.S 1149 DREAM CREST ROAD	TS COUNCIL	11-Oct-11	0	1	2
RIDGEWOOD P.S 7207 CAMBRETT DRIVE	TS COUNCIL	4-Oct-11	0	1	11
		5-Oct-11	0	1	0
			0	1	0
		13-Oct-11	0	1	2
		17-Oct-11	1	0	1
RUTH THOMSON MIDDLE PS 5605 FRESHWATER DRIVE	TS COUNCIL	27-Oct-11	0	1	0
SETTLERS GREEN 5878 MONTEVIDEO ROAD	TS COUNCIL	14-Oct-11	0	1	6
		20-Oct-11	1	0	6
SILVER CREEK P.S 460 SILVER CREEK BLVD	TS COUNCIL	31-Oct-11	0	1	1
ST BERNARD OF CLAIRAUX 2345 ESCADA DRIVE	TS COUNCIL	7-Oct-11	1	0	3
ST. DAVID OF WALES 4200 BEACON LANE	TS COUNCIL	31-Oct-11	0	1	0
ST. GERTRUDE ELEMENTRY 895 CEREMONIAL DRIVE	TS COUNCIL	13-Oct-11	0	1	0
		20-Oct-11	0	1	2
			0	1	3
		21-Oct-11	0	1	2
			0	1	1

School	Complainant				
ST. HILARY	TS COUNCIL	3-Oct-11	0	1	0
5070 FAIRWIND DRIVE			0	1	0
			0	1	0
ST. LOUIS	TS COUNCIL	6-Oct-11	0	1	2
1450 LEWISHAM DRIVE			1	1	0
ST MARGARATE OF SCOTLAND	TS COUNCIL	7-Oct-11	0	1	1
2266 COUNCIL RING ROAD					
ST. PIO OF PIETRELCINA	TS COUNCIL	14-Oct-11	0	1	0
4765 HURON HIGHTS DRIVE					
ST PETER AND PAUL	TS COUNCIL	24-Oct-11	0	1	2
4205 WOODINGTON DRIVE			0	1	0
ST RAYMOND	TS COUNCIL	5-Oct-11	1	0	4
5735 WHITEHORN AVENUE		7-Oct-11	0	1	1
ST. SIMON STOCK	TS COUNCIL	14-Oct-11	0	1	2
6440 LISGAR DRIVE					
ST.VINCENT DE PAUL	TS COUNCIL	19-Oct-11	1	1	1
665 WILLOWBANK TRAIL					
WESTACRES P.S	TS COUNCIL	27-Oct-11	0	1	0
2165 BREEZY BREA DRIVE			0	1	0
WHITEHORN P.S	TS COUNCIL	5-Oct-11	1	0	1
5785 WHITEHORN AVENUE			0	1	3
		17-Oct-11	0	1	0
			0	1	0