



## Education! Hands-on, Interactive, and Fun Museum Programming for All!



The Museums offer a full and changing menu of Education Programs for young and old, for schools and special interest groups. If you are a Teacher, or a Scout, Guide, Brownie, Cub, Beaver, or Spark Leader, or if you head up a group of adults, we have something for you! Many of our programs can be adapted to meet the needs of your group whether they are adults, or children. Ask us how.

Through a variety of approaches – discovery questions, hands-on activities, group work, reading, using their senses, role playing (and by listening to teachers and their students), we strive to ensure that our programs will be engaging and informative, and meet the needs of a wide variety of learning styles.

It is our hope that through the museum programs, students of all ages will connect with real people and places from the past, so that they can better understand how people have dealt with the one constant in history: change.

Our programs are lead by a talented group of Museum Interpreters adept in engaging all levels of audience in a number of different subject areas. *Continued on page 4...*

*In partnership with the Japan Foundation, the Museums of Mississauga will be hosting The Dolls of Japan: Shapes of Prayer, Embodiments of Love at Benares Visitor Centre and the Civic Centre until April 2009. Help us celebrate the culture of our twin city, Kariya, Japan.*



## Table of contents

Friends Update	2
Thanks Fran	2
In Fond Memory...	2
Welcome Isabel!	2
Artifacts Rooted in Bradley's Past	3
Up-coming Exhibits	3
Kelly's Korner	4
Fall in Review	5
Museums Musings on Awards!	6
The Great Potential Out There...	7
Researching Your Family Tree	7
Upcoming Events	8



## joinus!

Join Us at Bradley Museum for Maple Magic. Sweet times and lots of fun are a tradition at Maple Magic held Saturday March 14th to Sunday March 22nd. Weekends: 10 to 4pm, Weekdays: 12 to 4pm. Enjoy horse and wagon rides, crafts, pancakes, tours of sap lines and much more!



Family Day on February 16th!  
Activities, crafts, tours and

**FREE**

admission from 1 to 4 pm.



# Friends Update

Jenny Dale – Secretary, Friends of the Museums

Looking back on 2008, it was a very exciting and satisfying year. The final touches were put into the Log Cabin, and the beautiful landscaping around it was completed. This enchanting building is now a hub of activity with Scouts and Guides having educational sleepovers, and it has become “the in place” for meetings.

The On the Verandah concerts which took place on Fridays throughout the summer were a huge success. Each year more and more people are attending. Some of the money raised from these performances is being used to assist with bus expenses for primary school children to get to the Museums.

Recently we added a new member to our board. Dave Cook is a local historian; he has written several books about various aspects of the Mississauga area.

The Friends and the Museum Staff hosted the annual Volunteer Christmas Party at Benares on November 26th. This is an event where everyone gets to meet all the other volunteers and sponsors. It is the only annual gathering that is allowed to use Benares House for an event such as this.

On Friday, December 5th the Friends held their Christmas Concert and Sing-Along On the Verandah at Benares Historic House. This is always a chilly night, but everyone enjoyed themselves - especially Santa!

As this newsletter goes to press the Tenth Annual Starlight and Candlelight Gala on February 20th is drawing near. The Gala Committee is meeting regularly and planning this, the largest fundraiser of the year. Tickets for this event sell out almost as soon the invitations reach the recipients.

The next fundraising event will be The Gallery in the Garden on Sunday, June 7th; held on the lawn at Benares along with the now famous Strawberry Festival. This year we hope to have a more varied selection of artisans along with the usual visual artists.

Our Friends membership is gradually increasing, and we would welcome you to become a member with us; to promote, strengthen and support the Museums of Mississauga.

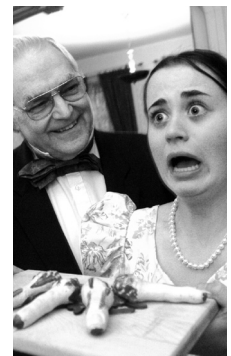
## Welcome Isabel!

Isabel Palferro is the successful candidate for the position of Administrative Coordinator for the Museums. Isabel has worked full-time as an Administrative Assistant in Recreation and Parks facilities since 2002, most recently at Rivergrove Community Centre.



## Thanks Fran

In the Fall, the Museums of Mississauga Advisory Committee was very sorry to accept the resignation of long-time member and current Chair, Fran Goddu. Fran has promised he's still going to be around to volunteer at events, and whenever there is a call for “Rennie Whiteoaks” to show up at Benares!



## In Fond Memory...



It is with great sadness that we remember volunteer John Davies, who passed away on August 16, 2008. John, the late husband of Wendy Davies, the former Bradley Museum Advisory Board Chair and Museums of Mississauga Advisory Committee Chair, was always willing to lend a hand around the Museums. He will truly be missed.

## museum news

MUSEUMS OF MISSISSAUGA



SHEDDING LIGHT ON THE PAST

Museum News is published three or four times each year by the Museums of Mississauga – Bradley Museum and Benares Historic House. Both are owned and operated by Recreation and Parks, Community Services Department.

**Editor:** Annemarie Hagan, Museums Manager; Stephanie Meeuwse, Collections Coordinator

**Design:** Neil Rodman, Creative Services, City of Mississauga

**Proofreader:** Becky Ryder, Friends of the Museum

**Next Publication Deadline:** April 1st, 2008

**Museum Staff:** Annemarie Hagan, Museums Manager; Isabel Palferro, Administrative Coordinator; Kelly Kubik, Museums Community Program Supervisor; Stephanie Meeuwse, Collections and Exhibit Coordinator; Fiona Ryder, Museums Education and Programming Supervisor; Tracy Oliveira, Collections Assistant, Lobna Thakib, Administrative Assistant, Bill Clark, Service Person.

**Historic Interpreters:** Sonia Basu; Alexandra Benedikt; Richard Collins; Christine Diggle; Arlene Manning; Jennifer Browne; Amanda McCully;

Brianne Crites, Jenna Craig, Natalie Campbell; Lindsay Doren; Merri Fergusson; Eileen Walker; Christian Pariente;

**Special Events Assistant:** Peter Dyba

**Costume Assistant:** Rebecca Rusk

**Museums of Mississauga Advisory Council:** Lawrence Cook; Wendy Davies; Joyce Delves; Fred Durdan; Anne Fabierkiewicz; John Pegram; John van Camp; Tamara Pope; Joseph Zammit; Councillor Pat Mullin; Councillor Eve Adams; Geoffrey Gooderham, Ex-officio Descendant of the Harris Family of Benares; **Staff Liason:** Karin Ann Brant; Annemarie Hagan.

**Friends of the Museums of Mississauga Board of Directors:** Wendy Davies; Dave Cook; Gerry Dallas; Jenny Dale; Joyce Delves; Fred Durdan; Anne Fabierkiewicz; Don Harrington; John Pegram; Becky Ryder; John van Camp; Anne Byard; June MacPherson; Dana Bryant-Giguere.

**Museums of Mississauga**  
1620 Orr Road, Mississauga L5J 2W8  
905-615-4860 FAX: 905-615-4861  
www.museumsofmississauga.com  
annemarie.hagan@mississauga.ca

# Collections Corner

## Artifacts Rooted in Bradley's Past

By Tracy Oliveira Collections Assistant

In 2008 the Museums of Mississauga were fortunate to receive two dresses owned by former board members of the Toronto Township Historical Foundation and worn at the Bradley Museum.



Mrs. Margaret Johnston, a former secretary with the Toronto Township Historical Foundation, donated a dress made originally in the late 1860s that belonged to her grandmother from La Chute Quebec. Mrs. Johnston used to wear this same dress at the Bradley Museum during various functions and events.

Both Margaret, and her late husband Walker E. Archer, were involved with the restoration of the Bradley Museum in the 1960s. Mr. Archer served as President of the Board and even enlisted the help of the Archer's two children, Robert and Christina, to help out with the restoration, and at various special events.

The Archers moved to Toronto Township in 1949 and bought four acres of land at 1000 Dundas Street West, near Erindale Station Road. For the first two years they lived in a small wooden shack before being able to complete their house, built of bricks from the Cooksville Brick Yard. Mr. Walker Archer was a WWII veteran who was able to purchase land with the assistance of a government loan offered through the Veterans Land Act.

Margaret Helen Lawrence also served as Secretary for the Toronto Township Historical Foundation, and was active as a board member until 1988. Margaret made this dress and other dresses for Centennial events at Bradley Museum in 1967. The dresses were all hand stitched to be authentic to the time period. This dress was donated to the Museums by her husband Bill Lawrence.

The Lawrences settled in Port Credit in 1950 and raised their four children there. Between the years of 1962 and 1964, Margaret served as Port Credit's representative on the South Peel Board of Education. Margaret was also an active member of the Mississauga South Historical Society and a volunteer for the Mormon Genealogical Library in Mississauga. She had a long-standing interest in the Bradley Museum, and her husband recalls that when the Anchorage was moved to the site in June 1978, she got up at 2 am to see the move. She was later active in the restoration of the building.

These two dresses are a welcome addition to our artifact collection as they provide context and interpretation to the history and development of the Bradley Museum and the Museums of Mississauga.

## Up-coming Exhibits

The Museums of Mississauga have two new exhibits Preserving Streetsville's Past: The Streetsville Historical Society Collection on Display at the Museums of Mississauga and Dolls of Japan: Shapes of Prayer, Embodiment of Love.

*Preserving Streetsville's Past* will be located at the Anchorage at Bradley Museum and will run through until June 15, 2009. This display is presented in partnership with the Streetsville Historical Society and highlights a number of images and artifacts from their collection. Selected photographs from this important collection highlight the people and places that helped in the growth and prosperity of Streetsville during the past 150 years. The Streetsville Historical Society began in 1970 and is dedicated to preserving the history of the "Village in the City." They meet on the second Thursday of each month except during the summer. For more information about the Streetsville Historical Society please call 905-826-1860.



*Dolls of Japan: Shapes of Prayer, Embodiments of Love* is a travelling exhibit developed and circulated by the Japan Foundation. This amazing collection of dolls has been in Ottawa and Montreal and we were fortunate enough to be included in the schedule. The Japan Foundation writes "In Japan, dolls have been a part of everyday life since ancient times. Japanese dolls reflect the customs

of Japan and the aspirations of its people, possess distinctive regional attributes, and over the centuries have developed in many diverse forms... We hope that the dolls in this exhibition will help visitors to appreciate these various aspects of Japanese culture". The Japan Foundation promotes the understanding of Japanese culture engaging in cultural exchange activities including Arts and Culture exchange, Japanese-Language Education Overseas, and Japanese Studies and Intellectual Exchange. For more information on the Japan Foundation please visit [www.jftor.org/](http://www.jftor.org/) or call 416.966.1600. Thanks for their generosity in funding this display at the Museums of Mississauga! Images of dolls courtesy of The Japan Foundation.

## Kelly's Korner

By Kelly Kubik

Museums Community Program Supervisor

THANKS A MILLION!

We have made it through the Holiday season and are busy planning for our Spring/Maple season which is fast approaching.

It seemed like the year just flew by, with so many diverse events and programs going on organized by both the Museums and Friends of the Museums.

To all our Friends of the Museums and volunteers, thank you for all your help throughout the year. I say it all the time; but without your dedication to what we are doing it would never be done. Your support of the Museums is truly appreciated.

### What's New

New this year, we are participating in Winter Lights, a co-operative effort of City of Mississauga staff, community volunteers and BIA's throughout Mississauga. Winter Lights is the winter equivalent to Communities in Bloom, created in 2001 to encourage communities to showcase winter activities, festive celebrations and visual decorations, with the goals of increasing Canada's appeal as a winter tourist destination, and improving the quality of life in communities across the country. This program will be running from December 2008 to March 2009, and the Museums are proud to be part of it. The agenda incorporates our Holiday programs and events, and will include Maple Magic, our Family Day programming and also the Friends of the Museums Starlight and Candle Light Gala held in February. We are looking forward to working with all these groups to continue our winning ways.

### Education! Hands-on, Interactive, and Fun Museum Programming for All!

*Continued from page 1...*

All of our Education Programs are designed with specific links to the Ontario Curriculum. In addition, the balance of our programs also provide for cross curricular links. All of our Guide/ Brownie/ Scout/ Cub/ Beaver/ Spark Programs are designed with Badge links. We do encourage all group types to check out our entire program menu: there maybe something in another listing that is of interest to you, that we can add to your program.

The 2008 introduction of the "Overnight Program at the Log Cabin" has been enjoyed by a number of Guide/ Brownie/ Scout/ Cub/ Beaver/ Spark groups. This adventure is coupled with a 90 minute program of the group's choice, a pizza party, snacks, breakfast and lunch. Feedback from groups who have enjoyed this experience has been great.

On February 16 please come and visit both museum locations to enjoy Family Day. There will be traditional meals and crafts for the kids. We will be open from 1:00 pm – 4:00 pm with free admission for everyone that comes out for the afternoon.

Also please mark your calendar for our annual Maple Magic event at the Bradley location, March 14 - 22. This annual event attracts over 5,000 people from all over the world. We are always looking for people to help out with pancakes being served on the weekend, tour guides, or assisting with our ever-popular craft areas. If you are interested in joining us please contact me directly.

Spring is just around the corner and the flowers will soon be emerging from the ground. Our garden volunteers put a lot of work into the plantings around both sites; we really appreciate their work. If you are interested in helping out in the gardens on Tuesday mornings, starting mid-May to mid-October, please give me a call at 905-615-4860 X 2111. The gardens range from historical vegetable gardens, to herb gardens, to numerous perennial beds, and we are always looking for people to help out.

Thank you once again for making the Museums a great place to work, and for pushing us to be the best that we can.

I hope you all had an opportunity to come see one of our many On the Verandah concerts at Benares throughout the summer. This is a Friends of the Museums event. Becky Ryder was instrumental in lining up the performers, volunteers, and hanging banners along the tree line each Friday to advertise the concert. Without the dedication of the Friends of the Museums events, and evenings such as the On the Verandah series would not happen.



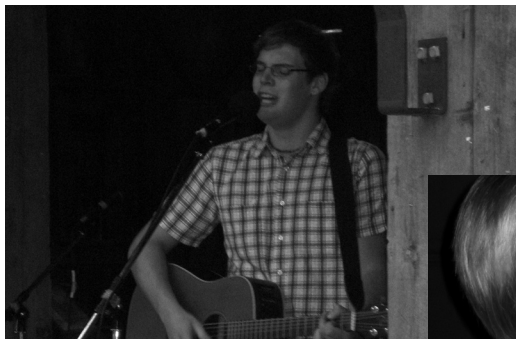
New are a number of Badge linked programs that use the Log Cabin at Bradley Museum as a home base. Although designed with the Scout, Guide, Brownie, Cub, Beaver, or Sparks groups in mind, there are many curricular links within the programs! Although these new programs are 90 minutes long, several of them have the adaptability for key components to be offered as 30 minute "add-on" programs. These "mini" programs would appeal to groups who would like to spend more time on site and delve deeper into specific areas of early 19th Century Life.

Check out our website, [www.museumsofmississauga.com](http://www.museumsofmississauga.com) for a complete program listing. Ask us if you don't see something that you are interested in, or if you need more information call 905-615-4860.

# Fall in Review



A Sponsor Appreciation Breakfast was held at Benares on September 23rd for the many businesses and individuals who helped to make the Clarkson 1808 event on June 21st such a success. A lasting tribute to the anniversary and everyone who helped out was installed in Oak Tree Park on Clarkson Road North this Fall.



The Fall Folk Festival and Environmental Fair was held at Bradley Museum on September 13th and 14th. Entertainment included many musical performances such as Karl Widmeyer, and a visit from Emma Stainton of the Canadian Peregrine Foundation with their great horned owl.



Madelaine Meeuwse, along with 589 other visitors (record breaking number!) had a ghoulishly good time at Tricks and Treats: Historic Hallowe'en Fun at Benares on October 26th. Another 80 visitors enjoyed the Spirits of Jalna Tour on October 29th. Thanks to all the volunteers and Heritage Mississauga for helping to put on such a spooktacular event!



As this newsletter was going into production, a number of Christmas festivities were underway, including Christmas in Clarkson, On the Verandah Christmas Concert and Sing-Along, the Friends of the Museums Christmas Party, Volunteer Potluck Luncheon, and Home for the Holidays.

# Museums Musings on Awards!

Annemarie Hagan, Museums Manager

*"Up there with my awards I have put a great big statue of Groucho Marx, just to put everything in perspective."*  
Actor John Lithgow, "BrainyQuote.com"

It may be that we will need to do something similar around the Museums so we can keep "everything in perspective" after a very exciting, award-winning autumn!

I am very proud to tell you about the various nominations and awards that the Museums has received recently. They reflect very well on our hard-working team of full and part-time staff, as well as all on our Friends, volunteers, and donors!

- Museums Community Program Supervisor, Kelly Kubik was nominated for a City of Mississauga Corporate Award of Excellence (CAFÉ) Award in the category of Customer Service. This recognizes Kelly's great work in growing the Museums' many special events, nurturing our great volunteers, and as well, for taking on extra challenges as part of the Committees planning Communities in Bloom, Winter Lights, and the Recreation and Parks Two Way Events.
- Stephanie Meeuwse, Museums Collections and Exhibit Coordinator was nominated for a CAFÉ Award of Excellence for "Continuous Improvement" for the innovative ways she has expanded the Museums' exhibit program city-wide through the Public Library System, her ground-breaking partnership with Stephen Lewis Secondary School for the "Self and Surroundings" exhibit, and the creative ways she developed the experiences of her trip to Mississauga's Twin City, Kariya into new exhibit opportunities, among many other "improvements".
- The Museums were very proud to have played a small part in Mississauga's winning the National Communities in Bloom Award for cities over 300,000. The judges started their tour of Mississauga with breakfast and a meeting with the City Leadership team in the Log Cabin!
- This was the first year for the "My Favourite Mississauga Space" competition as part of the Mississauga Urban Design Award, and the public was invited to vote for their favourite spaces across the City. The Bradley Museum won for Ward Two, beating out some other very lovely spaces!
- At The Ontario Museum Association's annual conference in Ottawa, The Friends of the Museums of Mississauga and the Museums of Mississauga received the 2008 Award of Excellence from the Ontario Museums Association for The Log Cabin at Bradley Museum project. This award recognizes the creativity and integrity of both the Friends and the Museums themselves for their cooperative effort on the fundraising campaign, building planning and implementation, and innovative 'Log Cabin Sleepover' children's programs.

- The Log Cabin at Bradley Museum also received a 2008 Mississauga Urban Design Award of Excellence at a reception held at the Art Gallery of Mississauga on November 4th. Michael Spazziani, Architect; Irina Polo, Landscape Architect, City of Mississauga; Scott Kelly, LogFarm Building; and Nicholas Holman, Heritage Consultant; were all recognized for their contributions.

*"The Jury felt that the project was highly integrated, evoking important messages of corporate partnership, civic pride, stewardship and community ownership. In its execution, the cabin represents a 'living' building, incorporating notions of flexibility, opportunities for a wide range of users and program integrity, rather than a purest conservation approach that translates into a 'period' piece. The reclamation and reconstitution of historic building fabric speaks to principles of sustainability resulting in a compelling adaptive re-use project. The landscaping is highly complementary, incorporating the historic elements of a traditional orchard and forms of vegetation which evoke the cabin's agrarian origins. The execution of the project is remarkable and the overall experience of the setting was analogous to being within an 'enchanted forest'."*

We are all honoured to have had our work recognized in this way; there were many challenges along the way on The Log Cabin Project in particular, so having both our Museum peers and the Urban Design Jury recognize the work of the Friends of the Museums, the Museum team, and the professionals who assisted us with the project, is truly gratifying.

However, there is no time to rest on our laurels as we work away on new initiatives including the "rebranding" of the Museums, the launch of an interactive Benares website, and the redesign of Benares summer kitchen!



Left to Right: John Van Camp, Log Cabin Task Force, Friends of the Museums; Scott Kelly, Log Farm Building; Annemarie Hagan, Museums Manager, City of Mississauga; Irina Polo, Landscape Architect, City of Mississauga; Michael Spazziani, MSAi Architect Inc.; Ron Lenyk, Fundraising Chair, Mississauga News.

# The Great Potential Out There...

By Joe Zammit, Collections & Storage Sub-Committee Chair (CASS)

The Museums of Mississauga's Collections and Storage Sub-Committee (CASS) has continued to remain active in planning for our collections and storage needs. Collections Coordinator, Stephanie Meeuwse, attended a Canadian Conservation Institute (CCI) workshop at the McLaren Art Gallery in Barrie on October 6 and 7. Storage Planning for Cultural Facilities discussed the process of storage planning and design including layout, structural requirements, scheduling, space analysis and much more. She reported back with a number of great ideas, and set out a list of long term and short term goals which we can aim to achieve. Immediate short term ways to conserve space in storage are underway and include some simple measures like boxing as many artifacts as possible, putting more items on display in the historic houses, as well as consolidating most of the exhibit props in the Anchorage work room. Stephanie has been meeting with Space Savers and Montel to get quotes on rolled storage at Benares; which could potentially give an extra five years of space for collecting. This would be a good short term solution to our lack of space while we continue to lobby and work towards a purpose built storage facility. The most important result from this workshop was that Siegfried Rempel, Heritage Services Advisor for CCI, visited the Museums on December 10 and 11 to see analyze our storage areas and make recommendation. Seigfried facilitated the workshop in Barrie and has worked as a conservator with CCI and the University of Texas since 1975. Involving a Heritage Advisor from CCI can

save us thousands of dollars in planning and feasibility studies for our future goals. A full report will be made available to us in mid-February.

Recently CASS has had the opportunity to view two sites that hold great potential for our collection needs. The first site was the Fusion Centre at the gateway of Mississauga on the lakeside border with the City of Oakville. This huge property not only holds great potential for our specific collection storage needs but also has the promise of being developed as a future park and historic site that all in Mississauga will be able to enjoy. We are all thankful to the city to have shown great leadership and stewardship in terms of purchasing and securing this property for future use.

Another great site and property is in northern Mississauga where the Leslie Log Cabin currently sits. This former working farm also holds the promise of providing our citizens with an opportunity to both celebrate our history and enjoy more recreational space within our municipal borders. We are working in partnership with the Streetsville Historical Society to plan for future improvements and use of the cabin.

The Collections and Storage Sub-Committee has recently taken in-depth and behind-the-scenes tours of both sites. All were excited with the vision and opportunities our future will bring, and all of us are committed to realizing the many new goals we have set out for ourselves.



## Our Mississauga Memories



'Our Mississauga Memories' is a joint project between the Mississauga Library Systems, Museums of Mississauga and Heritage Mississauga.

The project encouraged everyone to lend photographs of Mississauga's

past that were scanned by library staff and published to the Historic Image Gallery on the City of Mississauga's web site. The project was first initiated with the planning of Clarkson 200 and ended at Doors Open in September. A random draw was held for a \$200 Chapters gift certificate for all who participated. Maurice Pinto won the draw for his submission of Mississauga's Polish community float in the 1978 Fritterfest, a forerunner of Mississauga's "Carassauga" festival. Photographs of Mississauga's history are always welcome, so please contact us for more information.

## Researching Your Family Tree

Have you ever wondered about that mysterious person in your family's past? Or have you always wanted to work on your family history, but have no idea how to start? If you answered yes to either of these questions and have family roots in Ontario, we can help. Consult a family history librarian in the Canadiana Reading Room of the Mississauga Central Library on Thursdays from 9 to 11 a.m. or call Karen Black at 905-615-3200, ext. 3590. The Central Library is located at 301 Burnhamthorpe Road West.

The Mississauga Library System declares 2009 the year of Celebrating Our Past.



# What's Happening at the Museums of Mississauga!

## February 2009

**Preserving Streetsville's Past: the Streetsville Historical Society Collection on Display at the Museums of Mississauga.**  
Exhibit at the Anchorage, Bradley Museum  
January 25 to June 15

**The Dolls of Japan: Shapes of Prayer, Embodiment of Love**  
Exhibit at Benares Visitor Centre & Civic Centre  
December 15 to April 30

**Heritage Awards Night**  
7 pm to 9 pm  
Contract Mississauga Heritage at 905-828-8411

**Family Day at the Museums**  
February 16 1 pm to 4 pm  
Special programming will be done at both Museum locations

**Starlight and Candlelight Gala at the Bradley Museum**  
Friends of the Museums  
February 20 \*\* Sold Out\*\*

## March 2009

**Maple Magic: Maple Syrup Festival at the Bradley Museum**  
Saturday March 14 to Sunday March  
Weekends: 10 am to 4 pm  
Weekdays: 12 pm to 4 pm  
Bradley House Museum

## May 2009

To pre-register for any of the following programs, please contact the Customer Service Centre at 905-615-4100 or visit Connect2Rec and register on-line.

### Pre-Registered Program:

**Mother Daughter Tea**  
All Ages Fee: \$39.55 Classes: 1  
Benares Historic House  
May 02 1 pm-3 pm Sa 433102  
May 09 1 pm-3 pm Sa 433103

### Pre-Registered Program:

**Cooking Sweets and Sours For The Pantry**  
Age: 18Y and up Fee: \$30.50 Classes: 1  
Bradley Museum  
May 23 9 am-12 pm Sa 45729

## Starlight & Candlelight Gala...

The 10th annual Starlight & Candlelight Gala continues to be a prime fundraiser for the Friends of the Museums. The dinner and silent auction will be held on February 20th and we expect a wonderful evening with many donated items up for auction and a delicious meal by Michael's Back Door Restaurant. Liz and Fred Durdan, Co-Chairs for this year's event, along with the Gala Committee and Museums staff have worked hard to make sure things are organized for a seamless night. The revenues raised by this elegant affair help support the Museums of Mississauga in a number of ways including special events, programming supplies and conservation treatments. Thank you to all the supporters and participants who make this event a night to remember!

## Museum Hours

### Guided Tours for Drop-In Visitors

Wednesdays and Sundays, 1 to 5pm  
(Wednesday to Sunday during the Summer)

**Admission to both Museums:** Adults \$5; Students and Seniors \$3; Children \$1.50; Family \$12

**Exhibits in the Anchorage at Bradley Museum and Benares Visitor Centre:** Free,  
Monday to Friday 10am to 4pm

Both Museums are also available for pre-booked tours and programs 7 days a week, 14 hours a day

Ask about curriculum-based educational programming, meeting rooms, and wedding photography!  
Call 905-615-4860 ext. 2107

## Museums of Mississauga

### Bradley Museum

1620 Orr Road, Mississauga, ON L5J 4T2

### Benares Historic House

1507 Clarkson Road North, Mississauga, ON L5J 2W8  
905-615-4860 FAX: 905-615-4861

[www.museumsofmississauga.com](http://www.museumsofmississauga.com)

# joinus!

Everyone needs friends and the Museums of Mississauga is looking for folks like you to assist us in reaching our goals.

## Yes! I/We want to become Friends!

Name: \_\_\_\_\_

Address: \_\_\_\_\_

Phone: \_\_\_\_\_

Email: \_\_\_\_\_

Individual \$10     Family \$30     I wish to make a donation in the amount of \$\_\_\_\_\_

Return with payment to:  
P.O. Box 52560  
1801 Lakeshore Rd. W. Unit 6,  
Mississauga L5J 4S6

Please make cheques payable to the  
City of Mississauga - Identify 'Friends  
of the Museums' on the Memo line



MUSEUMS OF MISSISSAUGA  
\*Shedding Light on the Past\*

**MISSISSAUGA**  
Leading today for tomorrow

Benares Historic House was donated to and restored by the Ontario Heritage Foundation by the descendants of Captain James Harris – Geoffrey Harris Sayers, Dora Sayers Caro, and Barbara Sayers Larson. Bradley House was preserved, restored, and first operated by the Mississauga Heritage Foundation. The Museums are now owned and operated by Recreation and Parks, Community Services, City of Mississauga. The Museums are grateful to the Ontario Ministry of Culture for operating funding under the Community Museums Operating Grant Program.