

# AGENDA



---

## **FACILITY ACCESSIBILITY DESIGN SUBCOMMITTEE OF THE MISSISSAUGA ACCESSIBILITY ADVISORY COMMITTEE**

THE CORPORATION OF THE CITY OF MISSISSAUGA  
[www.mississauga.ca](http://www.mississauga.ca)

**MONDAY, MAY 14, 2012 – 1:30 P.M.**  
Committee Room A, 2<sup>nd</sup> Floor, Civic Centre  
300 City Centre Drive, Mississauga, Ontario, L5B 3C1

### Members

Carol MacEachern, Citizen Member (CHAIR)  
Glenn Barnes, Citizen Member  
Carol-Ann Chafe, Citizen Member  
Naz Husain, Citizen Member  
Clement Lowe, Citizen Member  
Mike Parris, Stakeholder Member

CONTACT PERSON: Karen Morden, Legislative Coordinator  
Office of the City Clerk, Telephone: 905-615-3200, ext. 5423, Fax: 905-615-4181  
[karen.morden@mississauga.ca](mailto:karen.morden@mississauga.ca)

## CALL TO ORDER

### ITEMS FOR DISCUSSION

A. Park Path Light Review Study

Michael Gusche, Project Manager, Park Development, will provide an overview and update with respect to the Park Path Light Review Study.

A PowerPoint presentation will be delivered at the meeting.

B. Credit River Parks Strategy

Mark Howard, Planner, Parks Planning, will provide a presentation with respect to the Credit River Parks Strategy.

A PowerPoint presentation will be delivered at the meeting.

### ITEMS FOR INFORMATION

1. Park Path Light Review Study Powerpoint Presentation

Powerpoint presentation with respect to the Park Path Light Review Study, Mississauga, ON.

2. Credit River Parks Strategy Powerpoint Presentation

Powerpoint presentation with respect to the Credit River Parks Strategy, Mississauga, ON.

### RECOMMEND RECEIPT/APPROVAL

### DATE OF NEXT MEETING

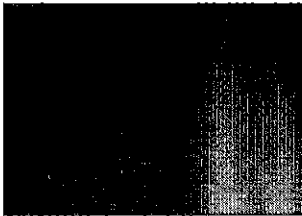
Facility Accessibility Design Subcommittee - Monday, June 18, 2012 at 1:30 PM, Committee Room A, 2<sup>nd</sup> Floor, Civic Centre.

Accessibility Advisory Committee – Monday, September 10, 2012 at 2:00 PM, at the Mississauga Valley Community Centre, Program Room 1.

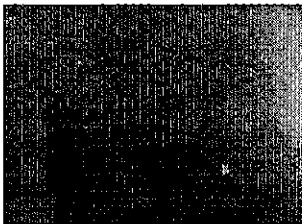
### ADJOURNMENT

# Park Path Light Study

Parks and Forestry  
Park Development  
May 2012



High Pressure Sodium Light



LED Light

Facility Accessibility Design  
Subcommittee  
MAY 14 2012

# Park Path Light Review

Park Path Lighting alignment with the City's strategic goals.

Move - paths our part of our transportation system

Belong - ensuring safe and accessible routes

Connect - walkable connected communities

Green - energy conservation

# Park Path Light Review

Need to improve pathway illumination:

- Paths and trails part of City's transit network
- Pedestrian, cyclist and E-bikes conflicts

Increased:

- colour rendition and depth perception
- ability to anticipate user conflicts
- inviting and safer experience

Reduction:

- in energy consumption;
- in life cycle maintenance and replacement.

# Park Path Light Review

Lighting design is based on guidelines prepared by the Illumination Engineering Society of North America.

Current standard:

Pedestrians traffic only.

$E_H$  10 lux       $E_{vmin}$  5.0 lux

New standard:

Mixed vehicle and Pedestrian traffic

$E_H$  20 lux       $E_{vmin}$  10.0 lux

# Park Path Light Review



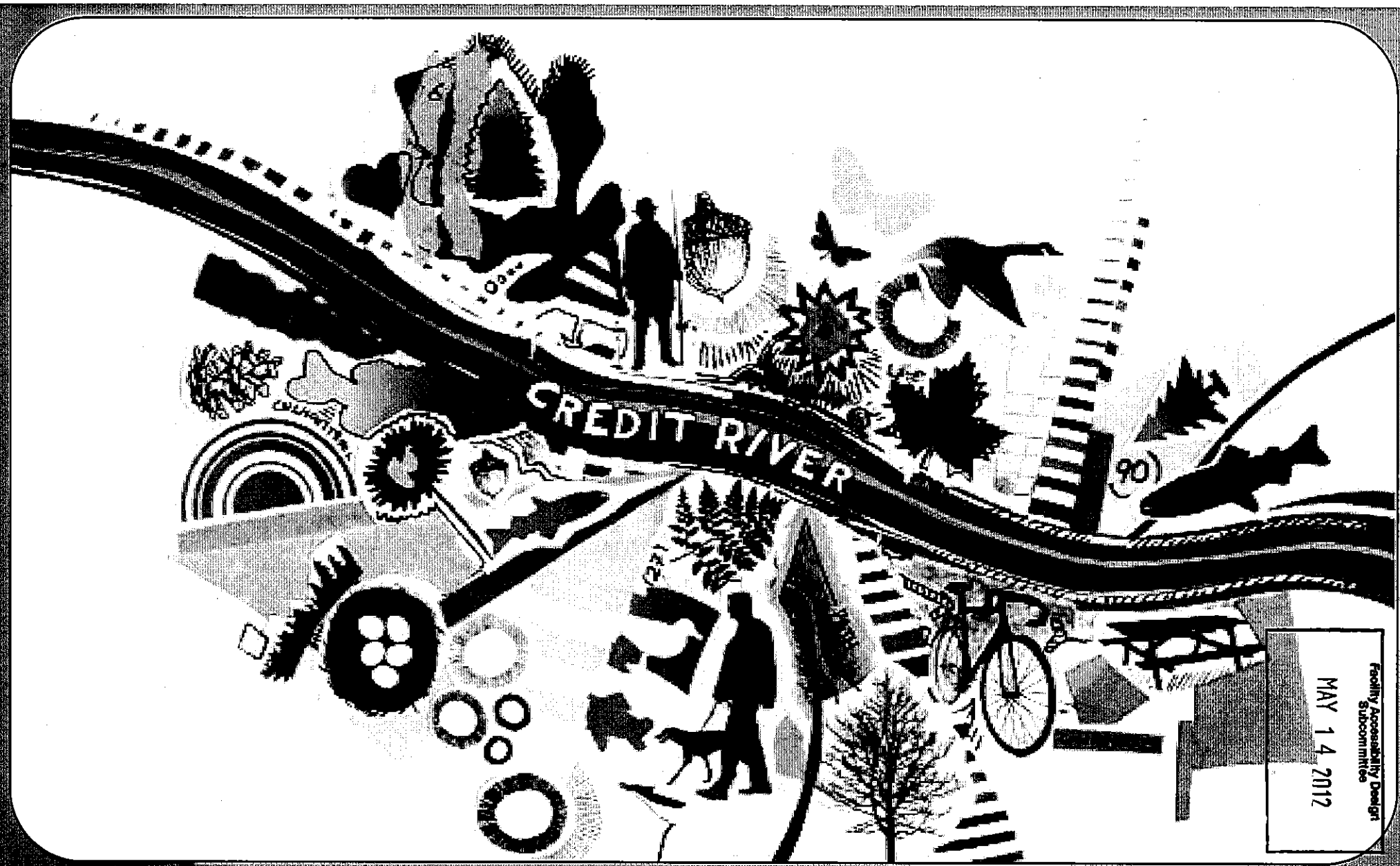
Existing Path Lighting

# Park Path Light Review

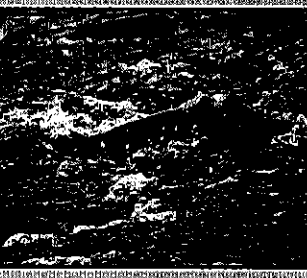
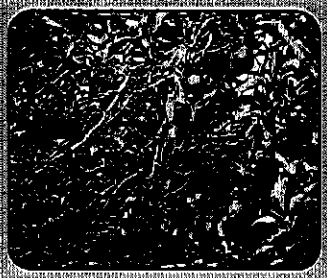
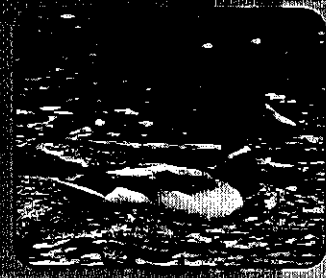


New LED Lighting





Facility Accessibility Design  
Subcommittee  
MAY 14 2012



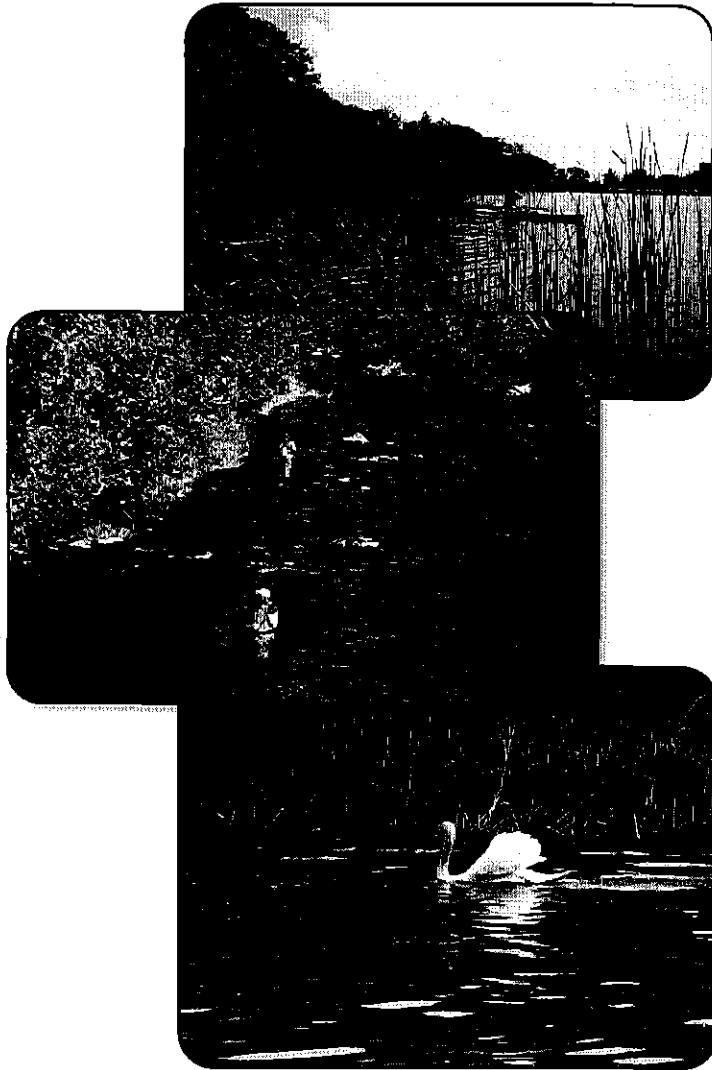
# Credit River Parks Strategy

An Overview for AAC

Monday, May 14, 2012

## Presentation Outline

- Project Overview
- Study Area
- Engagement Milestones
- Key Messages
- Specific Messages Regarding Accessibility
- Approach to Accessibility
- Next Steps
- Questions/Feedback



## Project Overview



### Credit River Parks Strategy

- 25 year master plan to advance the recreation and conservation of City parkland
- Includes all City owned and managed lands along the Credit River
- Award Winning Consulting Team
- Over 3/4 complete
- Approximately 300 +/- stakeholders have provided feedback (including AAC)

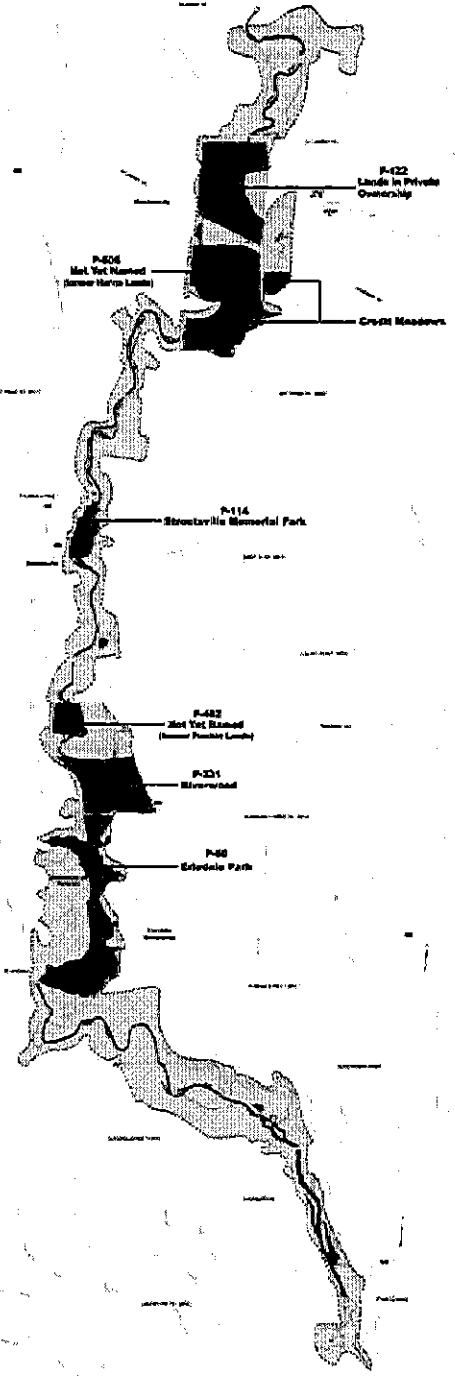
# Study Area

## Regional

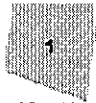
- 90 km (56 mil) in Length
- Northern limit of the Carolinian Forest Zone
- Major migratory corridor

## Municipal

- 27 km (17 mi) in Mississauga
- 650 ha (1600 ac) of parkland and natural areas
- 41 Parks
- Central to Recreation
- Fundamental to Cultural Heritage
- Crucial to Natural Heritage



# Study Area (continued)



93.1 Ha  
Humphry's



54.7 Ha  
Not Yet Named



57.9 Ha  
Credit Meadows



16.3 Ha  
Streetvilles Memorial Park



16.7 Ha  
Not Yet Named



59.9 Ha  
Riverwood

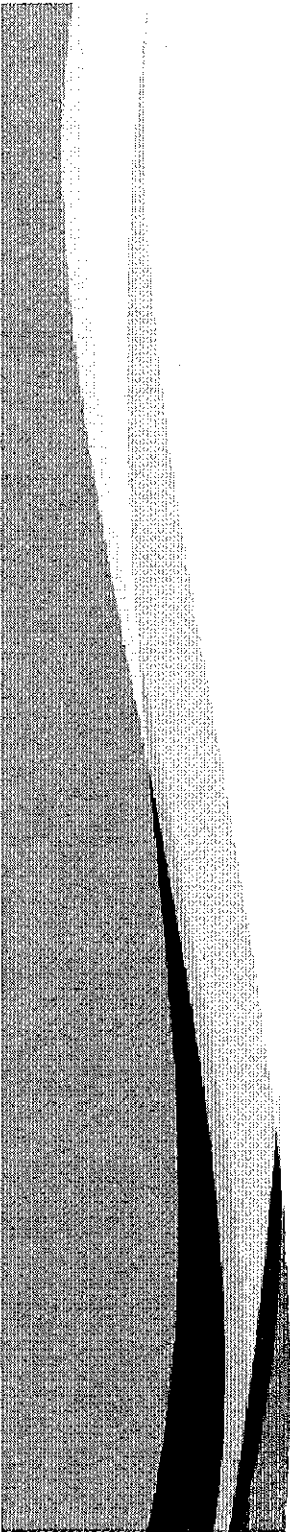


91.6 Ha  
Erindale Park

- Seven Feature sites
  - Properties selected for potential to impact the River and the recreational system
  - Account for 52% of the total Study Area
  - Approximately 10% of the total City Parkland
    1. Lands extending north of Highway #401 to Derry Road West
    2. Yet Unnamed Park (P-505), the former Harris lands
    3. Credit Meadows Park (P-122)
    4. Streetsville Memorial Park(P-114)
    5. Yet Unnamed Park (P-462), the former Pinchin lands
    6. Riverwood (P-331)
    7. Erindale Park (P-60)

# Engagement Milestones

- **October 2010:** Start-up Meeting with City Staff and Public Agencies
- **November 2010:** Community Meeting #1
- **December 2010:** Places and Spaces Interviews
- **Jan /February 2011:** Web Survey
- **February 2011:** Background Document Submission
- **March/April 2011** Internal Focus Group Sessions
- **March 11, 2011** AAC : One-on-One Session with Consulting Team
- **April/May 2011:** Stakeholder Interviews
- **May/June 2011:** External Focus Group Sessions
- **June 2011:** Preliminary Master Plan Document  
Draft Concept Plans for Feature Sites
- **June 28, 2011:** Community Meeting #2
- **July 12, 2011:** Bus Tour
- **September 14, 2011:** Community Meeting #3
- **November 28, 2011:** Revised Concepts
- **Jan - Feb, 2012 :** Staff review of revised Strategy
- **:March /April, 2012:** Revisions to Plans



# Key Messages

City Parkland and Natural Areas within the Credit Valley must:

- 1. Be preserved and enhanced.**
- 2. Positioned as the City's most important natural asset.**
- 3. Be geared to uses that are primarily passive.**

# AAC One-on-One Session

- 1. Universal Accessibility**
- 2. Pathway/Trail improvements**
- 3. Washrooms within parks**
- 4. Greater opportunities for the visually impaired to enjoy the parks system.**



# Accessibility within the Strategy

## **Base Principal:**

- "We value and are working towards Universal Accessibility."

## **Community Principal:**

- *To provide appropriate opportunities for accessible recreational and educational that reflect the diverse culture and demographic in Mississauga.*

## **Community Objectives:**

- *Provide (accessible) opportunities for access to and experience of the Credit River.*
- *Ensure accessibility wherever possible to residents and visitors of all ages and abilities.*

## Next Steps

- **May /June 2012:** Phasing plan and capital works budgets  
Discussion with Committees of Council & Stakeholders
- **June 2012:** Final Community Meeting (revisions as required)
- **July-August 2012:** Revisions to Plans
- **September 2012:** Preliminary Presentation to General Committee
- **October 2012:** Final Presentation to City Council



## Questions & Feedback

### Website

[www.mississauga.ca/creditriversstrategy](http://www.mississauga.ca/creditriversstrategy)

### Email

[creditriversstrategy@mississauga.ca](mailto:creditriversstrategy@mississauga.ca)

### Telephone

905-615-3200 ext 4498