



AGENDA

TRAFFIC SAFETY COUNCIL

THE CORPORATION OF THE CITY OF MISSISSAUGA
WEDNESDAY, SEPTEMBER 26, 2012 – 5:00 P.M.

COMMITTEE ROOM 'A', SECOND FLOOR
300 CITY CENTRE DRIVE, MISSISSAUGA, ONTARIO L5B 3C1
MISSISSAUGA, ONTARIO
www.mississauga.ca

Members

Councillor Frank Dale, Ward 4
Councillor Sue McFadden, Ward 10
Meredith Johnson (Trustee Ward 9 & 10 - Peel District School Board)
Anna Abbruscato (Trustee Ward 4 -Dufferin-Peel Catholic School Board)
Deborah Goss (Citizen Member Ward 1)
Peter Westbrook (Citizen Member Ward 2)
Boris Swedak (Citizen Member Ward 3)
Edgar Lethbridge (Citizen Member Ward 4)
Louise Gogan (Citizen Member Ward 5)
David Brown (Citizen Member Ward 6) **(CHAIR)**
Daniel Suess (Citizen Member Ward 7)
Doug Fryers (Citizen Member Ward 8)
Heather Relf (Citizen Member Ward 9)
David Raakman (Citizen Member Ward 10) **(VICE-CHAIR)**
Bill McBain (Citizen Member Ward 11)

City-Wide Members

John Dunn (Citizen Member Ward 8 South Zone)
Shakil Akhter (Citizen Member Ward 10 North Zone)
Yasmeen Ashraf Irshaduddin (Citizen Member Ward 10 North Zone)

Advisory Board

Andy Bate, Supervisor, Traffic Operations
Denna Yaunan, Traffic Operations Technician
Sheelagh Duffin, Supervisor, Crossing Guards
Parking Enforcement Officer
Sgt. K. Warren, Peel Regional Police
Gale Solomon-Henry, Principals'/Vice-Principals' Association Peel District School Board
Natalie Poerba & Marilyn Hayhow, Principals'/Vice-Principals' Association Dufferin-Peel Catholic School Board
Anna Gentile & Marcy Macina, Student Transportation

Contact: Laura Wilson, Legislative Coordinator
Office of the Clerk 905-615-3200 ext. 5425 Fax 905-615-4181
laura.wilson@mississauga.ca

INDEX – TRAFFIC SAFETY COUNCIL, SEPTEMBER 26, 2012

CALL TO ORDER

DECLARATIONS OF DIRECT (OR INDIRECT) PECUNIARY INTEREST

PRESENTATIONS / DEPUTATIONS

Karen Spencer, Advisor, City Manager's Office, with respect to the City Committees of Council Structure Review.

MATTERS TO BE CONSIDERED

1. Approval of Minutes of previous meeting
2. Site Inspection Report – St. Basil Catholic School, Ward 3
3. Site Inspection Report – St. Vincent de Paul Catholic School, Ward 3
4. Site Inspection Reports – Janet I. McDougald Public School, Ward 1
5. Site Inspection Request – Fallingbrook Senior Public School and Rick Hansen Secondary School, Ward 6
6. Site Inspection Request – Erin Mills Senior Public School, Ward 8
7. Site Inspection Request – Shelter Bay Public School, Ward 9
8. Site Inspection Request – The Valley's Senior Public School, Ward 4
9. Site Inspection Request – Janet I. McDougald Public School, Ward 1
10. Site Inspection Request – Dolphin Senior Public School, Ward 11
11. Site Inspection Request – Erin Centre Boulevard and Forest Hill Drive, Ward 11
12. School Walking Routes Participation Request, Ward 3
13. Dismissal Report – September 2012
14. Proposed Site Plan SP 09/074 – 935 Eglinton Avenue, Ward 6

INDEX CONTINUED – TRAFFIC SAFETY COUNCIL, SEPTEMBER 26, 2012

ITEMS FOR INFORMATION

15. Resignation email dated June 26, 2012 from John Dunn, Traffic Safety Council Citizen Member, Ward 8, South Zone
16. Resignation email dated July 19, 2012 from Doug Fryers, Traffic Safety Council Citizen Member, Ward 8
17. Resignation email dated August 23, 2012 from Yasmeen Ashraf Irshaduddin, Traffic Safety Council Citizen Member, Ward 10, North Zone
18. Parking Enforcement in School Zones – June 2012
19. Petition received September 12, 2012 regarding the request for a Crossing Guard at the intersection of Winfield Terrace and Westbourne Terrace, Ward 4
20. Information Package - City Committees of Council Structure Review

Date of Next Meeting – October 24, 2012

OTHER BUSINESS

ADJOURNMENT

CALL TO ORDERDECLARATIONS OF DIRECT (OR INDIRECT) PECUNIARY INTERESTPRESENTATIONS / DEPUTATIONS

Karen Spencer, Advisor, City Manager's Office, with respect to the City Committees of Council Structure Review.

MATTERS TO BE CONSIDERED1. Approval of Minutes of previous meeting

Minutes of the Traffic Safety Council meeting held on June 20, 2012.

RECOMMEND APPROVAL2. Site Inspection Report – St. Basil Catholic School, Ward 3

Site Inspection Report for the inspection conducted on September 11, 2012 to determine if the warrants are met for retention of the Crossing Guard located at the intersection of Rathburn Road and Golden Orchard Drive for students attending St. Basil Catholic School, 4235 Golden Orchard Drive.

RECOMMENDATION

1. That the Crossing Guard currently located at the intersection of Rathburn Road and Golden Orchard Drive for students attending St. Basil Catholic School, 4235 Golden Orchard Drive, be retained as the warrants have been met.
2. That the Transportation and Works Department be requested to do the following at St. Basil Catholic School:
 - a. Review existing signage in front of the school and replace the missing No U-Turn signs in front of the school.
 - b. Inform the Traffic Safety Council Legislative Coordinator once the missing No U-Turn signs have been installed.
3. That once the No U-Turn signs have been installed the Peel Regional Police be requested to enforce the No U-Turn signs in front of St. Basil Catholic School.
4. That the Legislative Coordinator be requested to inform the Peel Regional Police once the missing No U-Turn signs have been installed.

RECOMMEND APPROVAL

3. Site Inspection Report – St. Vincent de Paul Catholic School, Ward 3

Site Inspection Report for the inspection conducted on September 13, 2012 to determine if the warrants are met for retention of the Crossing Guard located at the intersection of Rathburn Road and Willowbank Trail for students attending St. Vincent de Paul Catholic School, 665 Willowbank Trail.

RECOMMENDATION

1. That the Crossing Guard located at the intersection of Rathburn Road and Willowbank Trail for students attending St. Vincent de Paul Catholic School, 665 Willowbank Trail, be removed as of December 21, 2012, as, similar to the site inspections conducted on April 5, 2012 and April 17, 2012, the warrants are no longer met and turning traffic is light at this intersection.
2. That the Principal of St. Vincent de Paul Catholic School be requested to notify the affected students and parents that the Crossing Guard currently located at the intersection of Rathburn Road and Willowbank Trail will be removed on December 21, 2012.

RECOMMEND APPROVAL

4. Site Inspection Reports – Janet I. McDougald Public School, Ward 1

Site Inspection Reports for the inspections conducted on September 6, 2012 and September 18, 2012 to determine if the warrants are met for retention of the Crossing Guard located at the intersection of Cawthra Road and Atwater Avenue for students attending Janet I. McDougald Public School, 1500 Ogden Avenue.

RECOMMENDATION

That the Crossing Guard currently located at the intersection of Cawthra Road and Atwater Avenue, for students attending Janet I. McDougald Public School, 1500 Ogden Avenue, be retained as the warrants have been met.

RECOMMEND APPROVAL

5. Site Inspection Request – Fallingbrook Senior Public School and Rick Hansen Secondary School, Ward 6

Email dated September 7, 2012 with respect to a site inspection request to review pedestrian safety at Bristol Road and Kinglet Avenue/ Lismic Boulevard for students attending Fallingbrook Senior Public School, 5187 Fallingbrook Drive and Rick Hansen Secondary School, 1150 Dream Crest Road.

RECOMMEND RECEIPT/ REFERRAL

6. Site Inspection Request – Erin Mills Senior Public School, Ward 8

Email dated September 6, 2012, with respect to a site inspection request to review pedestrian safety at the intersection of Winston Churchill Boulevard and Burnhamthorpe Road for students attending Erin Mills Senior Public School, 3546 South Common Court.

RECOMMEND RECEIPT/ REFERRAL

7. Site Inspection Request – Shelter Bay Public School, Ward 9

Email dated September 6, 2012 with respect to a site inspection request to review pedestrian safety at a school bus stop on Gulf Stream Way for students attending Shelter Bay Public School, 6735 Shelter Bay Road.

RECOMMEND RECEIPT/ REFERRAL

8. Site Inspection Request – The Valley's Senior Public School, Ward 4

Email dated September 10, 2012 with respect to a site inspection request to review pedestrian safety at Bloor Street and Central Parkway East, for students attending The Valley's Senior Public School, 1235 Mississauga Valley Boulevard.

RECOMMEND RECEIPT/ REFERRAL

9. Site Inspection Request – Janet I. McDougald Public School, Ward 1

Email dated September 11, 2012 with respect to a site inspection request to review pedestrian safety and traffic congestion along Orano Avenue and Kenmuir Avenue for students attending Janet I. McDougald Public School, 1500 Ogden Avenue.

RECOMMEND RECEIPT/ REFERRAL

10. Site Inspection Request – Dolphin Senior Public School, Ward 11

Email dated September 11, 2012 with respect to a site inspection request to review pedestrian safety along Thomas Street to Queen Street South for students attending Dolphin Senior Public School, 18 Brookside Drive.

RECOMMEND RECEIPT/ REFERRAL

11. Site Inspection Request – Erin Centre Boulevard and Forest Hill Drive, Ward 11

Email dated September 20, 2012 with respect to a request for a site inspection to review pedestrian safety for students walking to and waiting at a school bus stop at the intersection of Erin Centre Boulevard and Forest Hill Drive.

RECOMMEND RECEIPT/ REFERRAL

12. School Walking Routes Participation Request, Ward 3

Email dated September 18, 2012 from Councillor Chris Fonseca, Ward 3, requesting that St. Vincent de Paul Catholic School, 665 Willowbank Trail be considered for participation in the School Walking Routes Program.

RECOMMEND RECEIPT/ REFERRAL

13. Dismissal Report – September 2012

RECOMMENDATION

That the Dismissal Report for the month of September 2012 be received.

RECOMMEND RECEIPT

The following recommendations emanated from the Dismissal Report for the month of September 2012:

September 12, 2012

St. Francis of Assisi Catholic School, Ward 2

Recommendation

1. That Parking Enforcement be requested to enforce parking infractions along Thorn Lodge Drive, in front of St. Francis of Assisi Catholic School, 2480 Thorn Lodge Drive, between 2:50 p.m. and 3:10 p.m.
2. That the Dufferin- Peel Catholic District School Board be requested to review the adequacy of the signage posted at the St. Francis of Assisi Catholic School driveway.

RECOMMEND APPROVAL

September 17, 2012**Edenrose Public School, Ward 6****Recommendation**

1. That Parking Enforcement be requested to conduct a multi day parking enforcement blitz to enforce parking infractions along Edenrose Street in the vicinity of Edenrose Public School, 1342 Edenrose Street, between the hours of 3:10 p.m. and 3:35 p.m.
2. That the Peel Regional Police be requested to enforce traffic infractions along Edenrose Street in the vicinity of Edenrose Public School between the hours of 3:10 p.m. and 3:35 p.m.
3. That Traffic Safety Council acknowledge the Principal, Vice- Principal and staff at Edenrose Public School for their efforts which have resulted in the dramatic improvement in the dismissal procedures at Edenrose Public School.

RECOMMEND APPROVAL**14. Proposed Site Plan SP 09/074 – 935 Eglinton Avenue West, Ward 6**

Report dated July 24, 2012 from the Site Plan Review Subcommittee of Traffic Safety Council, with respect to the Proposed Site Plan, SP 09/074 to build a private school at 935 Eglinton Avenue West.

RECOMMENDATION

That the Commissioner of Planning and Building be advised that with respect to the Revised Site Plan SP 09/ 074 - Proposed Private School at 935 Eglinton Avenue West, Ward 6, the Site Plan Review Subcommittee of Traffic Safety Council reviewed the revised site plan submitted on July 9, 2012, and would recommend the following:

1. That modifications be made to the School Zone Safety (Kiss and Ride) Drop-Off lane area to 'smooth out' the lane as set out in the site plan and include the installation of a Stop Sign at the painted stop bar at the end of the lane.
2. That a Pedestrian Crossing Sign be installed at the front driveway for the pedestrian crossing as indicated on the site plan.
3. That the easterly driveway be restricted to ingress only and that No Exit signs be installed on both sides of the driveway.

RECOMMEND APPROVAL

ITEMS FOR INFORMATION

15. Resignation email dated June 26, 2012 from John Dunn, Traffic Safety Council Citizen Member, Ward 8 South Zone

Email dated July 19, 2012 from John Dunn, Traffic Safety Council Citizen Member, Ward 8 South Zone advising of his resignation from Traffic Safety Council.

RECOMMEND RECEIPT

16. Resignation email dated July 19, 2012 from Doug Fryers, Traffic Safety Council Citizen Member, Ward 8

Email dated July 19, 2012 from Doug Fryers, Traffic Safety Council Citizen Member, Ward 8 advising of his resignation from Traffic Safety Council.

RECOMMEND RECEIPT

17. Resignation email dated August 23, 2012 from Yasmeen Ashraf Irshaduddin, Traffic Safety Council Citizen Member, Ward 10, North Zone.

Email dated August 23, 2012 from Yasmeen Ashraf Irshaduddin, Traffic Safety Council Citizen Member, Ward 10, North Zone advising of her resignation from Traffic Safety Council.

RECOMMEND RECIEPT

18. Parking Enforcement in School Zones – June 2012

Memorandum from Sheena Rodda, Manager, Parking Enforcement reporting on parking enforcement in school zones for the month of June 2012.

RECOMMEND RECIEPT

19. Petition received September 12, 2012 regarding the request for a Crossing Guard at the intersection of Winfield Terrace and Westbourne Terrace, Ward 4

Petition containing 22 signatures requesting that a Crossing Guard be placed at Winfield Terrace and Westbourne Terrace, received at Council on September 12, 2012 and referred to Traffic Safety Council for a site inspection.

RECOMMEND RECEIPT/ REFERRAL

20. Information Package - City Committees of Council Structure Review

Information package dated June 22, 2012 from Karen Spencer, Advisor, City Manager's Office, with respect to the City Committee of Council Structure Review

RECOMMEND RECIEPT

Date of Next Meeting – October 24, 2012 at 5:00 p.m.

OTHER BUSINESS

ADJOURNMENT



Traffic Safety Committee

SEP 26 2012

MINUTES

TRAFFIC SAFETY COUNCIL

THE CORPORATION OF THE CITY OF MISSISSAUGA
WEDNESDAY, JUNE 20, 2012 – 5:00 P.M

COMMITTEE ROOM 'A', SECOND FLOOR
300 CITY CENTRE DRIVE, MISSISSAUGA, ONTARIO L5B 3C1
MISSISSAUGA, ONTARIO
www.mississauga.ca

Members

Councillor Frank Dale, Ward 4
Councillor Sue McFadden, Ward 10
Deborah Goss (Citizen Member Ward 1)
Peter Westbrook (Citizen Member Ward 2)
Boris Swedak (Citizen Member Ward 3)
Edgar Lethbridge (Citizen Member Ward 4)
Louise Gogan (Citizen Member Ward 5)
David Brown (Citizen Member Ward 6) (CHAIR)
Heather Relf (Citizen Member Ward 9)
David Raakman (Citizen Member Ward 10) (VICE-CHAIR)

City-Wide Members

Shakil Akhter (Citizen Member Ward 10 North Zone)

Members Absent

Meredith Johnson (Trustee Ward 9 & 10 - Peel District School Board)
Anna Abbruscato (Trustee Ward 4 -Dufferin-Peel Catholic School Board)
Daniel Suess (Citizen Member Ward 7)
Doug Fryers (Citizen Member Ward 8)
Bill McBain (Citizen Member Ward 11)
John Dunn (Citizen Member Ward 8 South Zone)
Yasmeen Ashraf Irshaduddin (Citizen Member Ward 10 North Zone)

Advisory Board

Al Sousa, Manager, Traffic Engineering and Operations
Andy Bate, Supervisor, Traffic Operations
Denna Yaunan, Traffic Operations Technician
Sheelagh Duffin, Supervisor, Crossing Guards
Marcy Macina, Student Transportation

Contact: Laura Wilson, Legislative Coordinator
Office of the Clerk 905-615-3200 ext. 5425 Fax 905-615-4181
laura.wilson@mississauga.ca

INDEX – TRAFFIC SAFETY COUNCIL – JUNE 20, 2012CALL TO ORDERDECLARATIONS OF DIRECT (OR INDIRECT) PECUNIARY INTERESTPRESENTATIONS / DEPUTATIONSMATTERS TO BE CONSIDERED

1. Approval of Minutes of previous meeting
2. Site Inspection Report – Thorn Lodge Public School, Ward 2
3. Site Inspection Report - San Lorenzo of Ruiz Catholic School and Barondale Public School, Ward 5
4. Site Inspection Report – Settler's Green Public School, Ward 9
5. Site Inspection Request – Blessed Teresa of Calcutta Public School, Ward 3
6. Site Inspection Request – St. Joseph Catholic Elementary School, Ward 11
7. Dismissal Report – June 2012
8. Email dated June 11, 2012 from Anna Gentile, Student Transportation of Peel Region (STOPR)
9. Peel Board Maintenance Meeting Minutes – May 15, 2012
10. Site Inspection Reports – Meadowvale Secondary School and Edenwood Public School, Ward 9
11. Site Inspection Report – St. Simon Stock Catholic School, Ward 10
12. Site Inspection Request – Springfield Public School, Ward 6
13. Additional Dismissal Report – June 2012
14. Memorandum dated June 19, 2012 from the Legislative Coordinator
15. Email dated June 15, 2012 from Azeem Parvez, Technical Analyst, Traffic Signals and Systems, Region of Peel
16. Transportation and Works Department – Action Items (May 2012)

Date of Next Meeting – September 26, 2012

OTHER BUSINESSADJOURNMENT

CALL TO ORDER

David Brown, Chair, called the meeting to order at 5:00 p.m.

DECLARATIONS OF DIRECT (OR INDIRECT) PECUNIARY INTEREST

David Raakman, Vice- Chair declared a conflict of interest with respect to any Agenda items or discussion specific to Ward 10 due to his temporary position in the Ward 10 office and in accordance with Council Resolution Number 0022-2012. He did not participate in any discussion or voting when Ward 10 matters were considered by Traffic Safety Council.

PRESENTATIONS / DEPUTATIONS

Louise Goegan, Traffic Safety Council Citizen Member, Peter Westbrook, Traffic Safety Council Citizen Member and Sheelagh Duffin, Crossing Guard Supervisor made a deputation with respect to the School Walking Routes Program. The delegation outlined the program, the benefits of the program, how and when the program was implemented, the success of the program to date and future goals.

RECEIVED – (P. Westbrook)
Recommendation - TSC-0105-2012

MATTERS TO BE CONSIDERED

1. Approval of Minutes of previous meeting

Minutes of the Traffic Safety Council meeting held on May 23, 2012.

Deborah Goss, Citizen Member noted that on page four (4) of the Draft Traffic Safety Council meeting minutes for May 23, 2012, the incorrect ward had been listed for Janet I. McDougald Public School. David Raakman, Vice- Chair noted that on page five (5) of the document, the incorrect ward had been listed for Plum Tree Park Public School. It was requested that the Legislative Coordinator make the appropriate changes to the minutes.

APPROVED – (B. Swedak)

2. Site Inspection Report – Thorn Lodge Public School, Ward 2

Site Inspection Report for the inspection conducted on May 31, 2012 to review pedestrian safety in front of Thorn Lodge Public School, 2730 Thorn Lodge Drive.

RECOMMENDATION

That Student Transportation of Peel Region (STOPR) be requested to consider delaying the afternoon arrival time of Atridge bus number 538A and Attridge bus number 531A at Thorn Lodge Public School, 2730 Thorn Lodge Drive, until 3:40 p.m. after the first three large busses which pick students up at the school have departed so that Atridge busses 538A and 531A can load students on the school's driveway.

APPROVED – (P. Westbrook)

Recommendation - TSC-0106-2012

3. Site Inspection Report –San Lorenzo of Ruiz Catholic School and Barondale Public School, Ward 5

Site Inspection Report for the inspection conducted on June 7, 2012 to review the warrants for placing a Crossing Guard at the intersection of Barondale Drive and Wildwood Trail for students attending San Lorenzo of Ruiz Catholic School 100 Barondale Drive and Barondale Public School, 200 Barondale Drive.

RECOMMENDATION

That the request for a Crossing Guard at the intersection of Barondale Drive and Wildwood Trail for students attending San Lorenzo of Ruiz Catholic School, 100 Barondale Drive and Barondale Public School, 200 Barondale Drive be denied as the warrants have not been met and an All Way Stop provides protection for crossing students.

APPROVAL – (Councillor S. McFadden)

Recommendation - TSC-0107-2012

4. Site Inspection Report – Settler's Green Public School, Ward 9

Site Inspection Report for the inspection conducted on June 12, 2012 to review the warrants for placing a Crossing Guard at the intersection of Montevideo Road and Lorca Crescent for students attending Settler's Green Public School, 5800 Montevideo Road.

RECOMMENDATION

1. That the request for a Crossing Guard at the intersection of Montevideo Road and Lorca Crescent for students attending Settler's Green Public School, 5800 Montevideo Road, be denied as the warrants have not been met.
2. That the Site Inspection Subcommittee of Traffic Safety Council be requested to re-inspect the intersection of Montevideo Road and Lorca Crescent for students attending Settler's Green Public School in September of 2012.
3. That Peel Regional Police be requested to enforce traffic infractions along Montevideo Road in front of Settler's Green Public School between 8:20 a.m. – 8:40 a.m. and 3:20 p.m. – 3:40 p.m.
4. That the Transportation and Works Department be requested to replace the faded signage along Montevideo Road in the vicinity of Settler's Green Public School.

APPROVAL – (D. Raakman)
Recommendation - TSC-0108-2012

5. Site Inspection Request – Blessed Teresa of Calcutta, Ward 3

Email dated June 8, 2012 from Councillor Chris Fonseca with respect to traffic concerns at the intersection of Runningbrook Drive and Riverspray Crescent.

RECOMMENDATION

That the Site Inspection Subcommittee of Traffic Safety Council be requested to review the warrants for placing a Crossing Guard at the intersection of Runningbrook Drive and Riverspray Crescent for students attending Blessed Teresa of Calcutta Catholic School, 1120 Runningbrook Drive in the fall of 2012.

APPROVED – (Councillor F. Dale)
Recommendation – TSC-0109-2012

6. Site Inspection Request – St. Joseph Catholic Elementary School, Ward 11

Email dated May 23, 2012 from Patricia Muir, 191st Mississauga Pathfinders and Girl Guides of Canada with respect to traffic concerns in front of St. Joseph Catholic Elementary School, 294 Church Street.

RECOMMENDATION

That the Site Inspection Subcommittee of Traffic Safety Council be requested to conduct a site inspection at St. Joseph Catholic Elementary School, 294 Church Street in the fall of 2012.

APPROVED – (H. Relf)

Recommendation - TSC-0110-2012

7. Dismissal Report – June 2012

RECOMMENDATION

That the Dismissal Report for the month of June 2012 be received.

RECEIVED – (B. Swedak)

The following recommendation emanated from the Dismissal Report for the month of June 2012:

June 6, 2012

Whitehorn Public School, Ward 6

Recommendation

That Parking Enforcement be requested to enforce parking infractions in the vicinity of Whitehorn Public School, 5785 Whitehorn Avenue, between 3:05 p.m. and 3:25 p.m.

APPROVED – (B. Swedak)

Recommendation - TSC-0113-2012

8. Email dated June 11, 2012 from Anna Gentile, Student Transportation of Peel Region (STOPR)

Discussion ensued with respect to the impact of full day kindergarten on traffic congestion in school zones.

RECOMMENDATION

That the email dated June 11, 2012 from Anna Gentile, Student Transportation of Peel Region (STOPR) with respect to the number of full day kindergarten students that will be bussed to school and the number of full day kindergarten students that will potentially be driven to school beginning in September 2012 be received.

RECEIVED – (Councillor S. McFadden)

Recommendation - TSC-0114-2012

9. Peel Board Maintenance Meeting Minutes – May 15, 2012

RECOMMENDATION

That the Peel Board Maintenance Meeting Minutes from the meeting held on May 15, 2012 be received.

RECEIVED – (P. Westbrook)

Recommendation - TSC-0115-2012

10. Site Inspection Reports – Meadowvale Secondary School and Edenwood Public School, Ward 9

Site Inspection Reports for the inspections conducted on June 14, 2012 to review pedestrian safety in front of Edenwood Middle School and Meadowvale Secondary School and to review pedestrian safety at the intersection of Winston Churchill Boulevard and Battleford Road for students attending Edenwood Middle School, 6770 Edenwood Drive and Meadowvale Secondary School, 6700 Edenwood Drive.

RECOMMENDATION

1. That the Transportation and Works Department be requested to review the signage on the East side of Edenwood Drive in front of Edenwood Middle School, 6770 Edenwood Drive and Meadowvale Secondary School, 6700 Edenwood Drive.
2. That once the Transportation and Works Department has installed the appropriate signage, Parking Enforcement be requested to enforce parking infractions along Edenwood Drive in front of Edenwood Middle School and Meadowvale Secondary School between 8:15 a.m. and 8:45 a.m. and 2:40 p.m. and 3:05 p.m.
3. That the Peel District School Board be requested to do the following at Meadowvale Secondary School:
 - a. Re-paint the School Zone Safety (Kiss and Ride) lanes.
 - b. Include the word "parking" on the Staff Parking Only directional sign and on the Student Only Parking directional sign located on the side of the school building at the entrance of the School Zone Safety (Kiss and Ride).
4. That the Principal of Meadowvale Secondary School be requested to encourage motorists to utilize the School Zone Safety (Kiss and Ride) lanes when dropping off and picking up students.

5. That the site inspection report dated June 14, 2012 with respect to the site inspection conducted at Battleford Road and Winston Churchill Boulevard for students attending Edenwood Public School, 2670 Edenwood Drive and Meadowvale Secondary School, 2700 Edenwood Drive, be received.

APPROVED – (E. Lethbridge)
Recommendation - TSC-116-2012

11. Site Inspection Report – St. Simon Stock Catholic School, Ward 10

Site Inspection Report for the inspection conducted on June 18, 2012 to review pedestrian safety in the vicinity of Alderwood Trail and Lisgar Drive, and in front of St. Simon Stock Catholic School, 6440 Lisgar Drive.

Having declared a conflict of interest with respect to any matter concerning Ward 10, David Raakman, Vice- Chair did not participate in any discussion or voting with respect to this matter.

Councillor Sue McFadden, Ward 10, outlined the background of the matter noting that the issues associated with St. Simon Stock Catholic School were ongoing. Discussion ensued with respect to solutions intended to mitigate the issues associated with the school.

RECOMMENDATION

1. That the Transportation and Works Department be requested to do the following at St. Simon Stock Catholic School, 6440 Lisgar Drive:
 - a. Replace the faded No Stopping Signs along Lisgar Drive in front of the school.
 - b. Replace the missing No Stopping and No U Turn signs along Lisgar Drive in front of the school and inform Parking Enforcement when the signs have been replaced.
 - c. Trim the overhanging branches which are obstructing the School Crossing Signs at Lisgar Drive and Alderwood Trail.
2. That once the signs are replaced, Parking Enforcement be requested to enforce parking infractions along Lisgar Drive in front of St. Simon Stock Catholic School and at the intersection of Lisgar Drive and Alderwood Trail between 8:25 a.m. and 8:45 a.m. and between 3:10 p.m. and 3:30 p.m.

APPROVED – (H. Relf)
Recommendation - TSC-0117-2012

12. Site Inspection Request – Springfield Public School, Ward 6

Email dated June 20, 2012, from Suanne Cyr, Resident, with respect to traffic concerns at the intersection of Dundas Street West and The Credit Woodlands.

RECOMMENADTION

1. That the email dated June 20, 2012 from Susanne Cyr, Resident, with respect to traffic concerns at the intersection of The Credit Woodlands and Dundas Street West be received.
2. That the Site Inspection Subcommittee of Traffic Safety Council be requested to conduct a site inspection in the fall of 2012, to review motorist behaviour at the intersection of The Credit Woodlands and Dundas Street West, for students attending Springfield Public School, 3257 The Credit Woodlands, in response to the email dated June 20, 2012 from Susanne Cyr, Resident, with respect to traffic concerns at the intersection.

APPROVED – (Councillor F. Dale)
Recommendation - TSC-0118-2012

13. Additional Dismissal Report – June 2012

RECOMMENDATION

That the Additional Dismissal Report for the month of June 2012 be received.

RECEIVED – (B. Swedak)
Recommendation - TSC-0112-2012

The following recommendation emanated from the Additional Dismissal Report for the month of June 2012:

Having declared a conflict of interest, David Raakman, Vice- Chair, did not participate in any discussion or voting with respect to this matter.

June 15, 2012

Meadowvale Secondary School, Ward 9

Recommendation

1. That the Peel District School Board be requested to do the following during the 2012 summer break at Meadowvale Secondary School, 6700 Edenwood Drive:
 - a. Re-paint the School Zone Safety (Kiss and Ride) through and storage lane markings.

- b. Modify or replace the Direction Sign at the driveway entrance.
 - c. Install signs to clearly identify the location of the School Zone Safety (Kiss and Ride) Lanes.
 - d. Install signs to clearly delineate student and visitor parking on school property.
2. That Parking Enforcement be requested to enforce parking infractions between 2:50 p.m. and 3:15 p.m. along Edenwood Drive and Battleford Road in the vicinity of Meadowvale Secondary School.

APPROVED – (B. Swedak)
Recommendation - TSC-119-2012

14. Memorandum dated June 19, 2012 from the Legislative Coordinator

Memorandum dated June 19, 2012 from the Legislative Coordinator requesting that the Walk to School Subcommittee of Traffic Safety Council be authorized to purchase Frequent Walker Cards for the School Walking Routes Program.

RECOMMENDATION

1. That the Memorandum dated June 19, 2012 from the Legislative Coordinator regarding the purchase of Frequent Walker Cards for the School Walking Routes Program be received.
2. That the Walk to School Subcommittee of Traffic Safety Council be authorized to use up to \$350.00 from the Walk to School Subcommittee's budget allocation in the approved 2012 Traffic Safety Council Budget for the purchase of five thousand (5000) Frequent Walker Cards for distribution to schools involved in the School Walking Routes Program.

APPROVED – (Councillor S. McFadden)
Recommendation - TSC-120-2012

16. Email dated June 15, 2012 from Azeem Parvez, Technical Analyst, Traffic Signals and Systems, Region of Peel

RECOMMENDATION

That the email dated June 15, 2012 from Azeem Parvez, Technical Analyst, Traffic Signals and Systems, Region of Peel, with respect to the installation of pushbutton signs at the intersection of Cawthra Road and Atwater Avenue be received.

RECIPEVED – (L. Goegan)
Recommendation - TSC-0121-2012

17. Transportation and Works Department – Action Items (May 2012)

RECOMMENDATION

That the report dated May 2012 from the Transportation and Works Department advising of the actions taken regarding recommendations from Traffic Safety Council be received.

RECEIVED - TSC-0122-2012
Recommendation – (D. Goss)

Date of Next Meeting – September 26, 2012 at 5:00 p.m.

OTHER BUSINESS

ADJOURNMENT – 5:53 p.m.
(L. Goegan)

2 Site Inspection Report - Traffic Safety Council

Traffic Safety Committee

Observers

Complete All Questions

File Number:

RT.10. St. Basil Catholic School

File Number:

RT.10.

Ward

3

SEP 26 2012

Observed By:

A. Liya

Councillor Fonseca

Denna Yaunan

P. Westbrook

S. Duffin

B. Swedak (p.m.)

Date of Inspection:

2012 09 11

Inspection Time:

8:15 AM

3:15 PM

Requested By:

Crossing Guard Supervisor

Prepared By:

D. Yaunan

Request For:

Removal of Crossing Guard

Weather Conditions: ☒ Dry ☒ Sunny ☐ Rain ☐ Snow ☐ Other:

Site

School:

St. Basil Catholic School

Address:

4235 Golden Orchard Drive

School Times: 9:00 AM 3:30 PM

Student Population:

No. of School Buses:

School:

Address:

School Times: AM PM

Student Population:

No. of School Buses:

School:

Address:

School Times: AM PM

Student Population:

No. of School Buses:

Location: (Please identify the location with reference to nearest intersection. Indicate nearest school and address.)

Rathburn Road and Golden Orchard Drive

Type of Crossing: ☒ 4 Way Intersection ☐ 3 Way Intersection ☐ Midblock (i.e., not at Intersection)

Type of Control: ☒ Traffic Lights ☐ Yield Signs ☐ No Control

☐ Stop Signs (Traffic is stopped on one street only) ☐ All Way Stop (Traffic is stopped in all directions)

Part 1 Site Conditions

School Signs:

☒ School Area Signs

☐ School crossing Signs

☐ Parking/Stopping Prohibition

Posted Speed Limit:

☐ 40 km/hr

☒ 50 km/hr

☐ 60 km/hr

☐ Other

km/hr

Visibility of Crossing Pedestrians:

☐ Poor

☐ Fair

☒ Good

Sight Obstructions:

☐ Hedges

☐ Trees

☐ Fences

☐ Bus Shelter

☐ Newspaper Boxes

☐ Other (Specify)

Road Grade:

☐ Flat

☒ Incline

☐ Decline

Road Geometrics:

☒ Straight

☐ Curved

Road Width: N/A

☐ Feet

☐ Metres

Curb to Curb:

☐ Feet

☐ Metres

Curb to Median:

☐ Feet

☐ Metres

Road Conditions:

☒ Dry

☐ Wet

☐ Snow Covered

☐ Ice

Sidewalks:

☐ Not Present

☒ North

☒ South

☒ East

☒ West

Proximity to School:

☐ In Front of

☒ Within 200

☐ Feet

☒ Metres

Route Survey:

☐ Shopping Area

☐ Construction

☐ Driveway

☐ Other (Specify)

Road Geometrics:

☒ Transit Bus Stop

☐ Underpass

☐ Parked Vehicles Within

☐ Feet

☐ Metres

Warrant Survey

Location:

Check Appropriate Box For The Access Required

2a

Rathburn Road and Golden Orchard Drive

SAFE GAP TIME (W/3.5+4) = N/A SEC.

Morning Intervals

No.
Peds.: Time: Gaps:

			# of Gaps	# of Conflicts
		Turning Traffic Only - East Leg with Crossing Guard		
0	8:15-8:20	////,//		
0	8:20-8:25	////		
2	8:25-8:30	/,/,/		
3	8:30-8:35	////,////		
7	8:35-8:40	//,//,///		
2	8:40-8:45	////,////,//,/		

Afternoon Intervals

No./
Peds.: Time: Gaps:
Turning Traffic Only - East Leg with Crossing Guard

0	3:15-3:20	0,/
9	3:20-3:25	/,//,///
0	3:25-3:30	///,///
0	3:30-3:35	///,//
0	3:35-3:40	0,/,/
1	3:40-3:45	/

Comments/Conflicts

A couple of vehicles were driving aggressively on Rathburn Road. Majority of motorists were courteous to pedestrians. 296 students attend this school with 179 potential walkers. Turning traffic was heavy at times and is inconsistent. Most students crossed with parents.

Recommendations

1. That the Crossing Guard currently located at the intersection of Rathburn Road and Golden Orchard Drive for students attending St. Basil Catholic School, 4235 Golden Orchard Drive, be retained as the warrants have been met.
2. That the Transportation and Works Department be requested to do the following at St. Basil Catholic School:
 - a. Review existing signage in front of the school and replace the missing No U-Turn signs in front of the school.
 - b. Inform the Traffic Safety Council Legislative Coordinator once the missing No U-Turn signs have been installed.
3. That once the No U-Turn signs have been installed the Peel Regional Police be requested to enforce the No U-Turn signs in front of St. Basil Catholic School.
4. That the Legislative Coordinator be requested to inform the Peel Regional Police once the missing No U-Turn signs have been installed.

Observations

A) Volume of Traffic: (See Intersection Plan)

B) Number of Crossing Pedestrians

☐ Heavy ☐ Light ☒ Intermittent

14 AM 10 PM

2b

Corporate Services Department
Legislative Services Division
Office of the City Clerk

City of Mississauga
300 City Centre Drive
MISSISSAUGA ON L5B 3C1

FAX: 905-615-4181
www.mississauga.ca

SEPT. 11/12 @ 8:15 \$ 3:15 RATHBURN RD \$

GOLDEN ORCHARD DRIVE



Leading today for tomorrow

May 14, 2012

To: Principal
4235 Golden Orchard Drive
Mississauga ON

Re: Site Inspection Request – St. Basil Catholic School
Reference: TSC-0076-2012

Traffic Safety Council on April 25, 2012 considered the above captioned matter and recommended the following:

TSC-0076-2012

That the Site Inspection Subcommittee of Traffic Safety Council be requested to conduct a site inspection to review the warrants for removing the Crossing Guard currently located at Golden Orchard Drive and Rathburn Road for students attending St. Basil Catholic School, 4235 Golden Orchard Drive, in September 2012, as the volume of turning traffic between the site inspections conducted at the intersection on April 10, 2012 and April 19, 2012 is inconsistent when students are crossing.

This recommendation was approved at General Committee on May 2, 2012 and subsequently adopted at Council, on May 9, 2012.

A handwritten signature in cursive script, appearing to read "Laura Wilson".

Laura Wilson,
Legislative Coordinator
(905) 615-3200 ext. 5425

cc. B. Bjarnason, Manager of Planning, Dufferin-Peel Catholic School Board
M. Pascucci, Trustee, Dufferin-Peel District Catholic School Board
S. Duffin, Crossing Guard Supervisor (via email)
A. Bate, Supervisor, Traffic Operations (via email)
Councillor C. Fonseca, Ward 3

Site Inspection Report - Traffic Safety Council

13 2c

Observers

Complete All Questions

File Number:

RT.10. St. Basil Catholic School

File Number:

RT.10.

Ward

3

Traffic Safety Committee

Observed By:

D. Duffin

P. Westbrook

D. Yaunan

APR 25 2012

D. Fryers

Date of Inspection:

2012 04 10

Inspection Time:

8:30 AM

3:30 PM

Requested By:

Crossing Guard Supervisor

Prepared By:

P. Westbrook

Request For:

Removal of Crossing Guard

Weather Conditions: ☒ Dry ☐ Sunny ☐ Rain ☐ Snow ☐ Other:**Site**

School:

St. Basil Catholic School

Address:

4235 Golden Orchard Drive

School Times:

9:00

AM

3:30

PM

Student Population:

No. of School Buses:

School:

Address:

School Times:

AM

PM

Student Population:

No. of School Buses:

School:

Address:

School Times:

AM

PM

Student Population:

No. of School Buses:

Location: (Please identify the location with reference to nearest intersection. Indicate nearest school and address.)

Rathburn Road and Golden Orchard DriveType of Crossing: ☒ 4 Way Intersection ☐ 3 Way Intersection ☐ Midblock (i.e., not at Intersection)Type of Control: ☒ Traffic Lights ☐ Yield Signs ☐ No Control☐ Stop Signs (Traffic is stopped on one street only) ☐ All Way Stop (Traffic is stopped in all directions)**Part 1 Site Conditions**

School Signs:

☐ School Area Signs☐ School crossing Signs☐ Parking/Stopping Prohibition

Posted Speed Limit:

☐ 40 km/hr☒ 50 km/hr☐ 60 km/hr☐ Other

km/hr

Visibility of Crossing Pedestrians:

☐ Poor☐ Fair☒ Good

Sight Obstructions:

☐ Hedges☐ Trees☐ Fences☐ Bus Shelter☐ Newspaper Boxes☐ Other (Specify)

Road Grade:

☐ Flat☒ Incline☐ Decline

Road Geometrics:

☒ Straight☐ Curved

Road Width: N/A

☐ Feet☐ Metres

Curb to Curb:

☐ Feet☐ Metres

Curb to Median:

☐ Feet☐ Metres

Road Conditions:

☒ Dry☐ Wet☐ Snow Covered☐ Ice

Sidewalks:

☐ Not Present☒ North☒ South☒ East☒ West

Proximity to School:

☐ In Front of☐ Within 200☐ Feet☒ Metres

Route Survey:

☐ Shopping Area☐ Construction☐ Driveway☐ Other (Specify)

Road Geometrics:

☐ Transit Bus Stop☐ Underpass☐ Parked Vehicles Within☐ Feet☐ Metres

Warrant Survey 2d

Location:

13a

Rathburn Road and Golden Orchard Drive

Check Appropriate Box For The Access Required

SAFE GAP TIME (W/3.5+4) = N/A SEC.

Morning Intervals

No.

Peds.: Time:

Gaps:

		East Leg	South Leg	Peds (S Leg)	# of Gaps	# of Conflicts
0	8:15-8:20	2,2	2,1	0		
0	8:20-8:25	3,1,1	2,0,0	0		
0	8:25-8:30	1,1,3	0,0,1	0		
0	8:30-8:35	5,4,4	1,0,0	0		
3	8:35-8:40	1,1,0	1,1,0	0		
7	8:40-8:45	2,2,2	0,4,3	2		
0	8:45-8:50	2	0	0		
	8:55-9:00					

Afternoon Intervals

No./

Peds.: Time:

Gaps:

		East Leg	South Leg	Peds (S Leg)
	3:15-3:20	2	0	0
1	3:20-3:25	5,1	0,1	0
5	3:25-3:30	2,0,1	1,0,1	2
0	3:30-3:35	2	2	0
	3:35-3:40			
	3:40-3:45			
	3:45-3:50			
	3:50-3:55			

Comments/Conflicts

St. Basil Catholic School student population = 295. No conflicts were observed. Turning Traffic was courteous to pedestrians. 60% of students crossing were younger and crossed with parents. 40% of students crossing were older students.

Recommendations

See second site inspection conducted on April 19, 2012 for recommendations

Observations

A) Volume of Traffic: (See Intersection Plan)

B) Number of Crossing Pedestrians

☐ Heavy ☐ Light ☒ Intermittent

e10 & s2 AM e6 & s2 PM

Site Inspection Report - Traffic Safety Council

13b 2e

Observers

Complete All Questions

File Number:

RT.10. St. Basil Catholic School

File Number:

RT.10.

Ward

3

Observed By:

D. Yaunan

S. Duffin

E. Lethbridge

P. Westbrook (PM)

D. Fryers

Date of Inspection:

2012 04 19

Inspection Time:

8:30 AM

3:30 PM

Requested By:

Crossing Guard Supervisor

Prepared By:

Request For:

Removal of Crossing Guard

Weather Conditions: ☐ Dry ☒ Sunny ☐ Rain ☐ Snow ☒ Other: +15 degrees cel. in A.M.

Site

School:

St. Basil Catholic School

Address:

4235 Golden Orchard Drive

School Times:

9:00

AM 3:30

PM

Student Population:

No. of School Buses:

School:

Address:

School Times:

AM

PM

Student Population:

No. of School Buses:

School:

Address:

School Times:

AM

PM

Student Population:

No. of School Buses:

Location: (Please identify the location with reference to nearest intersection. Indicate nearest school and address.)

Rathburn Road and Golden Orchard Drive

Type of Crossing: ☒ 4 Way Intersection ☐ 3 Way Intersection ☐ Midblock (i.e., not at Intersection)

Type of Control: ☒ Traffic Lights ☐ Yield Signs ☐ No Control

☐ Stop Signs (Traffic is stopped on one street only) ☐ All Way Stop (Traffic is stopped in all directions)

Part 1 Site Conditions

School Signs:

☐ School Area Signs

☐ School crossing Signs

☐ Parking/Stopping Prohibition

Posted Speed Limit:

☐ 40 km/hr

☒ 50 km/hr

☐ 60 km/hr

☐ Other

km/hr

Visibility of Crossing Pedestrians:

☐ Poor

☐ Fair

☒ Good

Sight Obstructions:

☐ Hedges

☐ Trees

☐ Fences

☐ Bus Shelter

☐ Newspaper Boxes

☐ Other (Specify)

Road Grade:

☐ Flat

☒ Incline

☐ Decline

Road Geometrics:

☒ Straight

☐ Curved

Road Width: N/A

☐ Feet

☐ Metres

Curb to Curb:

☐ Feet

☐ Metres

Curb to Median:

☐ Feet

☐ Metres

Road Conditions:

☒ Dry

☐ Wet

☐ Snow Covered

☐ Ice

Sidewalks:

☐ Not Present

☒ North

☒ South

☒ East

☒ West

Proximity to School:

☐ In Front of

☒ Within 200

☐ Feet

☒ Metres

Route Survey:

☐ Shopping Area

☐ Construction

☐ Driveway

☐ Other (Specify)

Road Geometrics:

☐ Transit Bus Stop

☐ Underpass

☐ Parked Vehicles Within

☐ Feet

☐ Metres

Warrant Survey 2f

Location: 13c

Check Appropriate Box For The Access Required

Rathburn Road and Golden Orchard Drive

SAFE GAP TIME (W/3.5+4) = N/A SEC.

Morning Intervals

No.
Peds.: Time: Gaps:

		East Leg	South Leg	Peds (S. Leg)	# of Gaps	# of Conflicts
0	8:15-8:20	1,3	2,4	0		
0	8:20-8:25	5,3	1,4	0		
2	8:25-8:30	0	3	2		
3	8:30-8:35	2,2,3	1,1,1	0		
3	8:35-8:40	2,6,3	1,0	2		
3	8:40-8:45	3,4,6	3,0,3	2		

Afternoon Intervals

No./	Peds.: Time:	Gaps:	East Leg	South Leg	Peds (S. Leg)
0	3:15-3:20	//, //, //	//	//	0
8	3:20-3:25	///, //, //, /	///, /	///, /	4
0	3:25-3:30	/, /	/, //	/, //	0
0	3:30-3:35	/, //, //	0, //, /	0, //, /	0
0	3:35-3:40	/, /	/, 0, 0	/, 0, 0	0
0	3:40-3:45	///, 0, /	0, ///	0, ///	0

Comments/Conflicts

Recommendations

1. That the Crossing Guard currently positioned at Golden Orchard Drive and Rathburn Road be retained for students attending St. Basil Catholic School, 4235 Golden Orchard Drive, as the warrants for placement of a Crossing Guard are met. 2. That the Site Inspection Subcommittee of Traffic Safety Council be requested to conduct a site inspection in September 2012 to review the warrants for removing the Crossing Guard currently positioned at Golden Orchard Drive and Rathburn Road as the volume of turning traffic between the site inspections conducted at Golden Orchard Drive and Rathburn Road on April 10, 2012 and April 19, 2012 are inconsistent when students are crossing.

Observations

A) Volume of Traffic: (See Intersection Plan)

B) Number of Crossing Pedestrians

☐ Heavy ☐ Light ☒ Intermittent

s6 & e11 AM s4 & e8 PM



April 12, 2012

To: Principal
St. Philip Catholic School
345 Fairview Road
Mississauga ON

Principal
Fairview Public School
3590 Joan Drive
Mississauga ON

Principal
St. Vincent de Paul Catholic School
665 Willowbank Trail
Mississauga ON

Principal
St. Basil Catholic School
4235 Golden Orchard Drive
Mississauga ON

Re: Possible Removal of Crossing Guards
Reference: TSC-0054-2012/ GC-0264-2012

Traffic Safety Council on March 28, 2012, considered the above captioned matter and recommended the following:

GC-0264-2012

That the email dated March 26, 2012, from Sheelagh Duffin, Crossing Guard Supervisor requesting the following be received and referred to the Site Inspection subcommittee of Traffic Safety Council to review and report back to Traffic Safety Council:

- a. Two site inspections to review the warrants for removing a Crossing Guard from the intersection of Confederation Parkway and Fairview Road, for students attending St. Philip Catholic School, 345 Fairview Road West and Fairview Public School, 3590 Joan Drive, Ward 7.
- b. Two site inspections to review the warrants for removing a Crossing Guard from the intersection of Rathburn Road and Willowbank Trail for students attending St. Vincent de Paul Catholic School, 665 Willowbank Trail, Ward 3.
- c. Two site inspections to review the warrants for removing a Crossing Guard from the intersection of Rathburn Road and Golden Orchard Drive for students attending St. Basil Catholic School, 4235 Golden Orchard Drive, Ward 3.

.../2

April 12, 2012

Principal
St. Philip Catholic School
Fairview Public School
St. Vincent de Paul Catholic School
St. Basil Catholic School

Page 2

This recommendation was approved at General Committee on April 4, 2012 and subsequently adopted at Council, on April 11, 2012.



Laura Wilson,
Legislative Coordinator
(905) 615-3200 ext. 5425

cc. B. Bjarnason, Manager of Planning, Dufferin-Peel Catholic School Board
J. S. Gill, Controller, Facilities & Transportation, Peel District School Board
B. Iannicca, Trustee, Dufferin-Peel District Catholic School Board
J. McDougald, Trustee, Peel District School Board
M. Pascucci, Trustee, Dufferin-Peel District Catholic School Board
A. Bate, Supervisor, Traffic Operations (via email)
S. Duffin, Crossing Guard Supervisor (via email)
Councillor N. Iannicca, Ward 7
Councillor C. Fonseca, Ward 3

Laura Wilson

From: Sheelagh Duffin
Sent: March 26, 2012 3:29 PM
To: Laura Wilson
Subject: Site Inspection Requests
Attachments: Sheelagh Duffin.vcf

2i

Hi Laura,

We have been monitoring the number of student walkers at several Mississauga school crossings. They are schools with fairly low student populations. We have noticed that the number of walkers has dropped significantly as has the amount of turning traffic. Therefore we would like to request that Traffic Safety review the following intersections :

~~1) Confederation Parkway & Fairview Road West for the students of Fairview Public School & St. Philip Catholic School (316 students). The times for the inspections would be 8:00 - 8:50 am and 3:00 to 3:50 pm.~~

~~2) Rathburn Road & Willowbank Trail for the students of St. Vincent de Paul Catholic School (226 students). The times for the Site Inspection would be 8:30 - 9:00 am and 3:30 - 4:00 pm.~~

* 3) Rathburn Road & Golden Orchard Drive for the students of St. Basil Catholic School (295 students). The times for the Site Inspection would be 8:15 - 8:45 am and 3:15 - 3:45 pm. *

Would you kindly schedule 2 Site Inspections in April for each of the 3 locations with a view to possible crossing guard removal at the end of the school year, June 30, 2012.

Thank you.

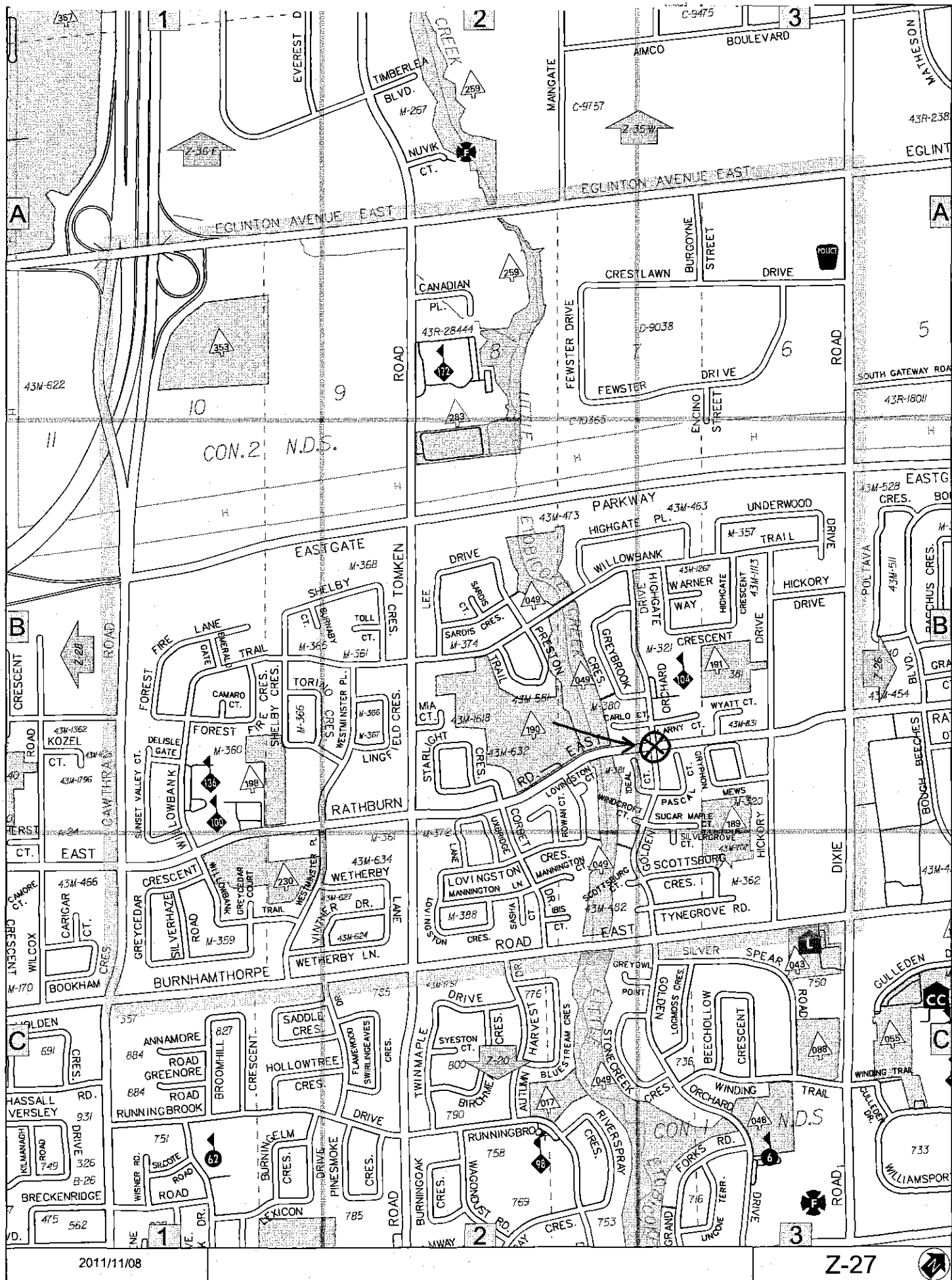
Sheelagh
5167

Sheelagh Duffin

City of Mississauga
Supervisor, Crossing Guards

(905) 896-5167 Fax 896-5583 Work
sheelagh.duffin@mississauga.ca

3185 Mavis Road
Mississauga ON L5C 1T7



Site Inspection Report - Traffic Safety Council

Traffic Safety Committee

SEP 26 2012

3

Observers

Complete All Questions

File Number:

File Number:

Ward

RT.10. St. Vincent de Paul Catholic

RT.10.

3

Observed By:

L. Goegan

S. Duffin

A. McLoughlin, Principal (pm)

D. Pest

B. Swedak (pm)

Date of Inspection:

2012 09 13

Inspection Time:

8:30 AM

3:30 PM

Requested By:

Crossing Guard Supervisor

Prepared By:

Request For:

Removal of Guard

Weather Conditions: ☒ Dry ☒ Sunny ☐ Rain ☐ Snow ☐ Other:

Site

School:

St. Vincent de Paul Catholic

Address:

665 Willowbank Trail

School Times:

9:00

AM 3:30

PM

Student Population:

195

No. of School Buses:

2sml

School:

Address:

School Times:

AM

PM

Student Population:

No. of School Buses:

School:

Address:

School Times:

AM

PM

Student Population:

No. of School Buses:

Location: (Please identify the location with reference to nearest intersection. Indicate nearest school and address.)

Rathburn Road and Willowbank Trail

Type of Crossing: ☒ 4 Way Intersection ☐ 3 Way Intersection ☐ Midblock (i.e., not at Intersection)

Type of Control: ☒ Traffic Lights ☐ Yield Signs ☐ No Control

☐ Stop Signs (Traffic is stopped on one street only) ☐ All Way Stop (Traffic is stopped in all directions)

Part 1 Site Conditions

School Signs:

☐ School Area Signs

☐ School crossing Signs

☐ Parking/Stopping Prohibition

Posted Speed Limit:

☐ 40 km/hr

☒ 50 km/hr

☐ 60 km/hr

☐ Other

km/hr

Visibility of Crossing Pedestrians:

☐ Poor

☐ Fair

☒ Good

Sight Obstructions:

☐ Hedges

☐ Trees

☐ Fences

☐ Bus Shelter

☐ Newspaper Boxes

☐ Other (Specify)

Road Grade:

☒ Flat

☐ Incline

☐ Decline

Road Geometrics:

☒ Straight

☐ Curved

Road Width:

☐ Feet

☐ Metres

Curb to Curb:

☐ Feet

☐ Metres

Curb to Median:

☐ Feet

☐ Metres

Road Conditions:

☒ Dry

☐ Wet

☐ Snow Covered

☐ Ice

Sidewalks:

☐ Not Present

☒ North

☒ South

☒ East

☒ West

Proximity to School:

☐ In Front of

☒ Within 100

☐ Feet

☒ Metres

Route Survey:

☐ Shopping Area

☐ Construction

☐ Driveway

☐ Other (Specify)

Road Geometrics:

☐ Transit Bus Stop

☐ Underpass

☐ Parked Vehicles Within

☐ Feet

☐ Metres

3a Warrant Survey

Location:

Check Appropriate Box For The Access Required

Rathburn Road and Willowbank Trail

SAFE GAP TIME (W/3.5+4) = **N/A** SEC.

Morning Intervals

No.

Peds.: Time:

Gaps:

		S Leg	E Leg	E Peds	# of Gaps	# of Conflicts
0	8:30-8:35	2,1,0	0,0,0	0		
0	8:35-8:40	0,1	0,1	3,0		
0	8:40-8:45	2,0	2,2	0,1		
0	8:45-8:50	0,3,1	1,1,3	0		
0	8:50-8:55	0,0,0	2,3,2	11		
0	8:55-9:00	3,1,0	3,2,2	1		

Afternoon Intervals

No./

Peds.: Time:

Gaps:

		S Leg	E Leg	E Peds
0	3:30-3:35	0,1,1,0	0,2,0,3,0	15
0	3:35-3:40	2,1,0,1	1,1,0	10
0	3:40-3:45	4,0	1,1	0
0	3:45-3:50	1	0	0

Comments/Conflicts

Turning traffic is light. No conflicts were observed. Motorists were courteous to crossing pedestrians. Students were accompanied by parents/ caregivers. Entry and dismissal times of John Cabot Secondary School are 8:17 a.m. and 2:20 p.m. and do not impact St. Vincent de Paul Catholic School entry and dismissal times.

Recommendations

1. That the Crossing Guard located at the intersection of Rathburn Road and Willowbank Trail for students attending St. Vincent de Paul Catholic School, 665 Willowbank Trail, be removed as of December 21, 2012, as, similar to the site inspections conducted on April 5, 2012 and April 17, 2012, the warrants are no longer met and turning traffic is light at this intersection.
2. That the Principal of St. Vincent de Paul Catholic School be requested to notify the affected students and parents that the Crossing Guard currently located at the intersection of Rathburn Road and Willowbank Trail will be removed on December 21, 2012.

Observations

A) Volume of Traffic: (See Intersection Plan)

B) Number of Crossing Pedestrians

☐ Heavy ☒ Light ☐ Intermittent

16 AM 25 PM



SEPT. 13 @ 830 \$ 330 @ RATHBURN RD \$
WILLOWBANK TRAIL

3b

May 14, 2012

To: Principal
St. Vincent de Paul Catholic School
665 Willowbank Trail

Re: Site Inspection Request
Reference: TSC-0075-2012/ GC-0356-2012

Traffic Safety Council on April 25, 2012 considered the above captioned matter and recommended the following:

TSC-0075-2012

1. That the Site Inspection Subcommittee of Traffic Safety Council be requested to conduct a site inspection to review the warrants for removing the Crossing Guard currently located at the intersection of Rathburn Road and Willowbank Trail for students attending St. Vincent de Paul Catholic School, 665 Willowbank Trail, in September 2012.
2. That the Transportation and Works Department be requested to re-paint the crosswalk lines at the intersection of Rathburn Road and Willowbank Trail.
3. That the email dated April 25, 2012 from Anthony McLoughlin, Principal, St. Vincent de Paul, with respect to concerns regarding the possible removal of the Crossing Guard at Rathburn Road and Willowbank Trail be received.
4. That the email dated April 25, 2012 from Councillor Chris Fonseca, Ward 3, with respect to concerns regarding the possible removal possible removal of the Crossing Guard at Rathburn Road and Willowbank Trail be received.

This recommendation was approved at General Committee on May 2, 2012 and subsequently adopted at Council, on May 9, 2012.

Laura Wilson,
Legislative Coordinator
(905) 615-3200 ext. 5425

cc. J. S. Gill, Controller, Facilities & Transportation, Peel District School Board
M. Pascucci, Trustee, Dufferin-Peel District Catholic School Board
A. Bate, Supervisor, Traffic Operations
S. Duffin, Crossing Guard Supervisor (via email)
Councillor C. Fonseca, Ward 3

3c Site Inspection Report - Traffic Safety Council

Observers

Complete All Questions

File Number:

RT.10. St. Vincent de Paul Catholic

File Number:

RT.10.

Ward

3

12

Observed By:

E. Lethbridge

S. Duffin

D. Fryers (AM)

B. Swedak (PM)

D. Pest

Traffic Safety Committee

Date of Inspection:

2012 04 05

Inspection Time:

8:30 AM

3:30 PM

APR 25 2012

Requested By:

Crossing Guard Supervisor

Prepared By:

Request For:

Remove Guard

Weather Conditions: ☒ Dry ☒ Sunny ☐ Rain ☐ Snow ☐ Other: Sunny in the P.M.

Site

School:

St. Vincent de Paul Catholic

Address:

665 Willowbank Trail

School Times:

9:00

AM

3:30

PM

Student Population:

No. of School Buses:

School:

Address:

School Times:

AM

PM

Student Population:

No. of School Buses:

School:

Address:

School Times:

AM

PM

Student Population:

No. of School Buses:

Location: (Please identify the location with reference to nearest intersection. Indicate nearest school and address.)

Rathburn Rd & Willowbank Trail

Type of Crossing: ☒ 4 Way Intersection ☐ 3 Way Intersection ☐ Midblock (i.e., not at Intersection)

Type of Control: ☒ Traffic Lights ☐ Yield Signs ☐ No Control

☐ Stop Signs (Traffic is stopped on one street only) ☐ All Way Stop (Traffic is stopped in all directions)

Part 1 Site Conditions

School Signs:

☐ School Area Signs

☐ School crossing Signs

☐ Parking/Stopping Prohibition

Posted Speed Limit:

☐ 40 km/hr

☒ 50 km/hr

☐ 60 km/hr

☐ Other

km/hr

Visibility of Crossing Pedestrians:

☐ Poor

☐ Fair

☒ Good

Sight Obstructions:

☐ Hedges

☐ Trees

☐ Fences

☐ Bus Shelter

☐ Newspaper Boxes

☐ Other (Specify)

Road Grade:

☒ Flat

☐ Incline

☐ Decline

Road Geometrics:

☒ Straight

☐ Curved

Road Width: N/A

☐ Feet

☐ Metres

Curb to Curb:

☐ Feet

☐ Metres

Curb to Median:

☐ Feet

☐ Metres

Road Conditions:

☒ Dry ☐ Wet

☐ Snow Covered

☐ Ice

Sidewalks:

☐ Not Present

☒ North

☒ South

☒ East

☒ West

Proximity to School:

☐ In Front of

☒ Within 100

☐ Feet

☒ Metres

Route Survey:

☐ Shopping Area

☐ Construction

☐ Driveway

☐ Other (Specify)

Road Geometrics:

☐ Transit Bus Stop

☐ Underpass

☐ Parked Vehicles Within

☐ Feet

☐ Metres

Warrant Survey

Check Appropriate Box For The Access Required

3d

Location:

12a

Rathburn Rd & Willowbank Trail

SAFE GAP TIME (W/3.5+4) = N/A SEC.

Morning Intervals

No.

Peds.: Time:

Gaps:

		East Leg	South Leg	Peds. South	# of Gaps	# of Conflicts
0	8:30-8:35	0,0,0	0	0		
0	8:35-8:40	1,1,0	2,0,0	0		
0	8:40-8:45	1,1	0,0	0		
3	8:45-8:50	1,1,1	0,0	0		
5	8:50-8:55	1,1,1,1,1,1	1,1,0,0	0		
4	8:55-9:00	1,1,1,1,1,1	1,1,0	0		

Afternoon Intervals

No./

Peds.: Time:

Gaps:

		East Leg	South Leg	Peds (South)
6	3:30-3:35	1,1,1,2	1,1,1,1,1,1	2
15	3:35-3:40	2,3,0	0,1,0,3,2	2
0	3:40-3:45	0,0,0	2,1,5	0
1	3:45-3:50	0,0,1	3,0,3	1
0	3:50-3:55	1,1,2	1,3,3	0
0	3:55-4:00	0,0,1	2,2,2	0

Comments/Conflicts

St. Vincent de Paul student population = 226. Turning traffic was light. Younger students crossed with adults. No conflicts were observed. Motorists were courteous to crossing pedestrians. Entry and dismissal times for John Cabot Secondary School are offset at 8:15 a.m. and 2:50 p.m. and therefore do not impact school entry and dismissal at St. Vincent de Paul.

Recommendations

Please see second site inspection conducted on April 17, 2012 for recommendation.

Observations

A) Volume of Traffic: (See Intersection Plan)

B) Number of Crossing Pedestrians

☐ Heavy ☒ Light ☐ Intermittent

12 AM 27 PM

Site Inspection Report - Traffic Safety Council

12b

Observers

Complete All Questions

File Number:

RT.10. St. Vincent de Paul Catholic

File Number:

RT.10.

Ward

3

Observed By:

Date of Inspection:

2012 04 17

Inspection Time:

8:30 AM

3:30 PM

Requested By:

Crossing Guard Supervisor

Prepared By:

Request For:

Removal of Guard

Weather Conditions: ☐ Dry ☐ Sunny ☐ Rain ☐ Snow ☐ Other:

Site

School:

St. Vincent de Paul Catholic

Address:

665 Willowbank Trail

School Times:

9:00

AM

3:30

PM

Student Population:

No. of School Buses:

School:

Address:

School Times:

AM

PM

Student Population:

No. of School Buses:

School:

Address:

School Times:

AM

PM

Student Population:

No. of School Buses:

Location: (Please identify the location with reference to nearest intersection. Indicate nearest school and address.)

Rathburn Road and Willowbank Trail

Type of Crossing: ☐ 4 Way Intersection ☐ 3 Way Intersection ☐ Midblock (i.e., not at Intersection)Type of Control: ☐ Traffic Lights ☐ Yield Signs ☐ No Control☐ Stop Signs (Traffic is stopped on one street only) ☐ All Way Stop (Traffic is stopped in all directions)

Part 1 Site Conditions

School Signs:

☐ School Area Signs☐ School crossing Signs☐ Parking/Stopping Prohibition

Posted Speed Limit:

☐ 40 km/hr☒ 50 km/hr☐ 60 km/hr☐ Other

km/hr

Visibility of Crossing Pedestrians:

☐ Poor☐ Fair☐ Good

Sight Obstructions:

☐ Hedges☐ Trees☐ Fences☐ Bus Shelter☐ Newspaper Boxes☐ Other (Specify)

Road Grade:

☒ Flat☐ Incline☐ Decline

Road Geometrics:

☒ Straight☐ Curved

Road Width: N/A

☐ Feet☐ Metres

Curb to Curb:

☐ Feet☐ Metres

Curb to Median:

☐ Feet☐ Metres

Road Conditions:

☒ Dry☐ Wet☐ Snow Covered☐ Ice

Sidewalks:

☐ Not Present☒ North☒ South☒ East☒ West

Proximity to School:

☐ In Front of☒ Within 100☐ Feet☒ Metres

Route Survey:

☐ Shopping Area☐ Construction☐ Driveway☐ Other (Specify)

Road Geometrics:

☐ Transit Bus Stop☐ Underpass☐ Parked Vehicles Within☐ Feet☐ Metres

Warrant Survey

Check Appropriate Box For The Access Required

Location:

12c

39

Rathburn Road and Willowbank Trail

SAFE GAP TIME (W/3.5+4) = SEC.

Morning Intervals

No.

Peds.: Time:

Gaps:

		East Leg	South Leg	Peds. South
0	8:30-8:35	0,1,0	0,2,0	0
1	8:35-8:40	0	0	0
0	8:40-8:45	1,3,2	0,0,0	0
4	8:45-8:50	1,1	0,0	2
6	8:50-8:55	0,3,4	1,0,1	0
2	8:55-9:00	0,1,2	1,2,1	

of Gaps

of Conflicts

Afternoon Intervals

No./

Peds.: Time:

Gaps:

		East Leg	South Leg	Peds. South
9	3:30-3:35	0,1,1,2	1,2,1,1	0
5	3:35-3:40	1,4,0	2,0,3,1	0
0	3:40-3:45	2,0,2,3,0	0,2,1,2	0
0	3:45-3:50	1,1	2,1	0
0	3:50-3:55	0,0,1	1,0,1	0
0	3:55-4:00	0,0,2	1,0	0
	4:00-4:05			
	4:05-4:10			
	4:10-4:15			
	4:10-4:15			
	4:20-4:25			
	4:25-4:30			

Comments/Conflicts

No Conflicts were observed. Turning traffic was light and drivers were courteous to crossing pedestrians. Younger students crossed with parents and traffic control signals provide protection for crossing students.

Recommendations

1. That the Crossing Guard currently located at the intersection of Rathburn Road and Willowbank Trail for students attending St. Vincent de Paul Catholic School, 665 Willowbank Trail be removed in June 2012 at the end of the 2012 school year as the warrants for a Crossing Guard are no longer met and turning traffic is light. 2. That the Transportation and Works Department be requested to re-paint the crosswalk lines at the intersection of Rathburn Road and Willowbank Trail. 3. That the Principal of St. Vincent de Paul Catholic School be requested to notify the affected students and parents of the removal of the Crossing Guard at the end of the school year, June 29, 2012.

Observations

A) Volume of Traffic: (See Intersection Plan)

B) Number of Crossing Pedestrians

☐ Heavy ☒ Light ☐ Intermittent

13 AM 14 PM



April 12, 2012

To: Principal
St. Philip Catholic School
345 Fairview Road
Mississauga ON

Principal
Fairview Public School
3590 Joan Drive
Mississauga ON

Principal
St. Vincent de Paul Catholic School
665 Willowbank Trail
Mississauga ON

Principal
St. Basil Catholic School
4235 Golden Orchard Drive
Mississauga ON

Re: Possible Removal of Crossing Guards
Reference: TSC-0054-2012/ GC-0264-2012

Traffic Safety Council on March 28, 2012, considered the above captioned matter and recommended the following:

GC-0264-2012

That the email dated March 26, 2012, from Sheelagh Duffin, Crossing Guard Supervisor requesting the following be received and referred to the Site Inspection subcommittee of Traffic Safety Council to review and report back to Traffic Safety Council:

- a. Two site inspections to review the warrants for removing a Crossing Guard from the intersection of Confederation Parkway and Fairview Road, for students attending St. Philip Catholic School, 345 Fairview Road West and Fairview Public School, 3590 Joan Drive, Ward 7.
- b. Two site inspections to review the warrants for removing a Crossing Guard from the intersection of Rathburn Road and Willowbank Trail for students attending St. Vincent de Paul Catholic School, 665 Willowbank Trail, Ward 3.
- c. Two site inspections to review the warrants for removing a Crossing Guard from the intersection of Rathburn Road and Golden Orchard Drive for students attending St. Basil Catholic School, 4235 Golden Orchard Drive, Ward 3.

.../ 2

April 12, 2012

Principal
St. Philip Catholic School
Fairview Public School
St. Vincent de Paul Catholic School
St. Basil Catholic School

Page 2

This recommendation was approved at General Committee on April 4, 2012 and subsequently adopted at Council, on April 11, 2012.



Laura Wilson,
Legislative Coordinator
(905) 615-3200 ext. 5425

cc. B. Bjarnason, Manager of Planning, Dufferin-Peel Catholic School Board
J. S. Gill, Controller, Facilities & Transportation, Peel District School Board
B. Iannicca, Trustee, Dufferin-Peel District Catholic School Board
J. McDougald, Trustee, Peel District School Board
M. Pascucci, Trustee, Dufferin-Peel District Catholic School Board
A. Bate, Supervisor, Traffic Operations (via email)
S. Duffin, Crossing Guard Supervisor (via email)
Councillor N. Iannicca, Ward 7
Councillor C. Fonseca, Ward 3

3j

RATHBURN RD & WILLOWBANK TR. APRIL 5 @ 8:30 & 3:30

Laura Wilson

From: Sheelagh Duffin
Sent: March 26, 2012 3:29 PM
To: Laura Wilson
Subject: Site Inspection Requests
Attachments: Sheelagh Duffin.vcf

12d

Hi Laura,

We have been monitoring the number of student walkers at several Mississauga school crossings. They are schools with fairly low student populations. We have noticed that the number of walkers has dropped significantly as has the amount of turning traffic. Therefore we would like to request that Traffic Safety review the following intersections :

- ~~1) Confederation Parkway & Fairview Road West for the students of Fairview Public School & St. Philip Catholic School (316 students). The times for the inspections would be 8:00 - 8:50 am and 3:00 to 3:50 pm.~~
- * 2) Rathburn Road & Willowbank Trail for the students of St. Vincent de Paul Catholic School (226 students). The * times for the Site Inspection would be 8:30 - 9:00 am and 3:30 - 4:00 pm.
- ~~3) Rathburn Road & Golden Orchard Drive for the students of St. Basil Catholic School (295 students). The times for the Site Inspection would be 8:15 - 8:45 am and 3:15 - 3:45 pm.~~

Would you kindly schedule 2 Site Inspections in April for each of the 3 locations with a view to possible crossing guard removal at the end of the school year, June 30, 2012.

Thank you.

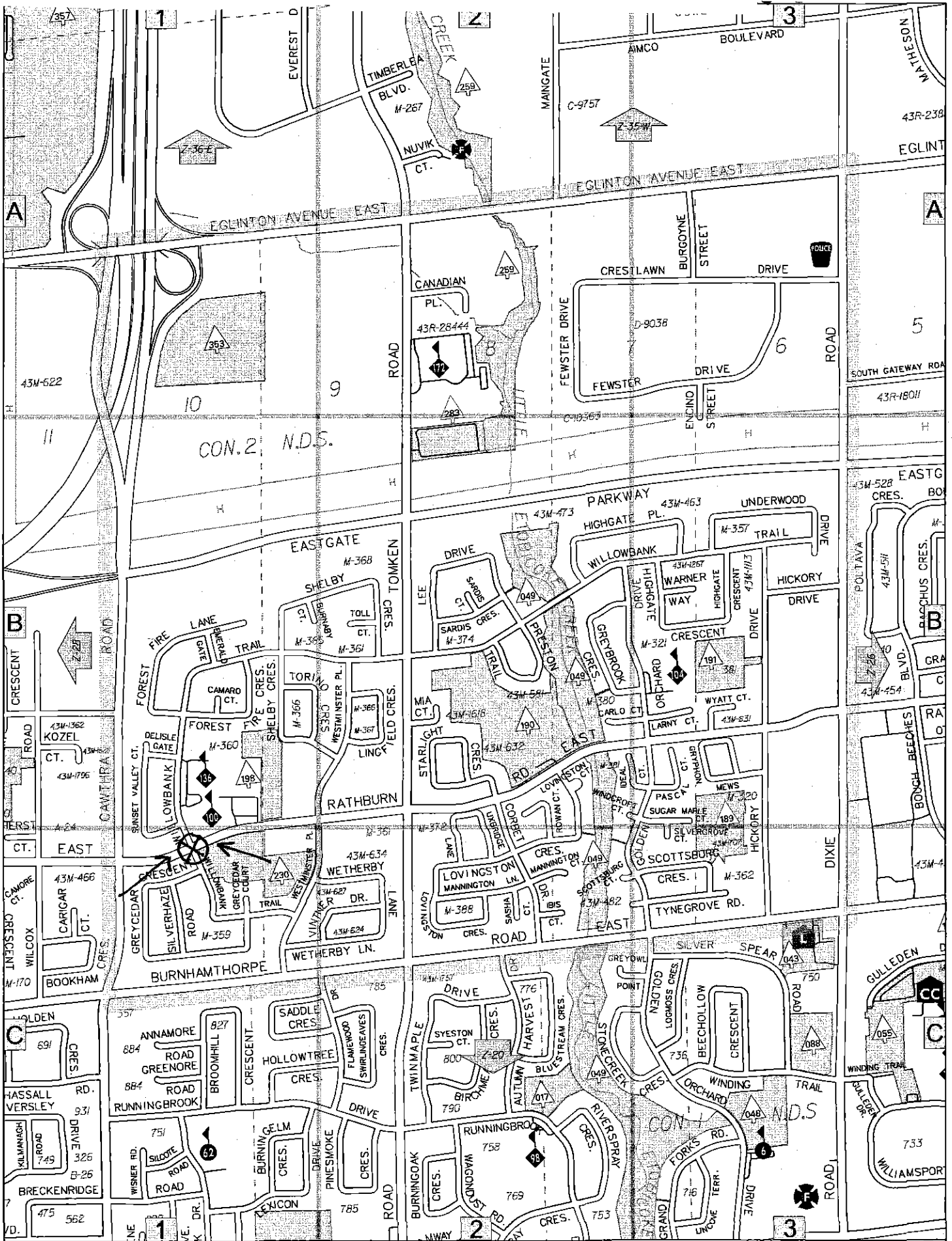
Sheelagh
5167

Sheelagh Duffin

City of Mississauga
Supervisor, Crossing Guards

(905) 896-5167 Fax 396-5583 Work
sheelagh.duffin@mississauga.ca

3185 Mavis Road
Mississauga ON L5C 1T7



Site Inspection Report - Traffic Safety Council

Traffic Safety Committee
Observers

Complete All Questions

File Number:

File Number:

Ward

SEP 26 2012

RT.10. Janet I. McDougald Public

RT.10.

1

Observed By:

D. Goss

D. Yaunan

D. Suess

D. Duffin

P. Westbrook

Date of Inspection:

2012 09 06

Inspection Time:

8:25 AM

3:30 PM

Requested By:

TSC Recommendation

Prepared By:

D. Yaunan

Request For:

Retention of Crossing Guard

Weather Conditions: ☒ Dry ☒ Sunny ☐ Rain ☐ Snow ☐ Other:
Site

School:

Janet I. McDougald Public School

Address:

1500 Ogden Avenue

School Times:

9:00

AM 3:30

PM

Student Population:

No. of School Buses:

School:

Address:

School Times:

AM

PM

Student Population:

No. of School Buses:

School:

Address:

School Times:

AM

PM

Student Population:

No. of School Buses:

Location: (Please identify the location with reference to nearest intersection. Indicate nearest school and address.)

CAWTHRA RD. / ATWATER AVE.

Type of Crossing: ☒ 4 Way Intersection ☐ 3 Way Intersection ☐ Midblock (i.e., not at Intersection)Type of Control: ☒ Traffic Lights ☐ Yield Signs ☐ No Control☐ Stop Signs (Traffic is stopped on one street only) ☐ All Way Stop (Traffic is stopped in all directions)
Part 1 Site Conditions

School Signs:

☐ School Area Signs☐ School crossing Signs☐ Parking/Stopping Prohibition

Posted Speed Limit:

☐ 40 km/hr☒ 50 km/hr☐ 60 km/hr☐ Other

km/hr

Visibility of Crossing Pedestrians:

☐ Poor☐ Fair☒ Good

Sight Obstructions:

☐ Hedges☐ Trees☐ Fences☐ Bus Shelter☐ Newspaper Boxes☐ Other (Specify)

Road Grade:

☒ Flat☐ Incline☐ Decline

Road Geometrics:

☒ Straight☐ Curved

Road Width: N/A

☐ Feet☐ Metres

Curb to Curb:

☐ Feet☐ Metres

Curb to Median:

☐ Feet☐ Metres

Road Conditions:

☒ Dry☐ Wet☐ Snow Covered☐ Ice

Sidewalks:

☐ Not Present☒ North☒ South☒ East☒ West

Proximity to School:

☐ In Front of☐ Within☐ Feet☐ Metres

Route Survey:

☐ Shopping Area☐ Construction☐ Driveway☐ Other (Specify)

Road Geometrics:

☐ Transit Bus Stop☐ Underpass☐ Parked Vehicles Within☐ Feet☐ Metres

Warrant Survey

Check Appropriate Box For The Access Required

4a

Location:

CAWTHRA RD. / ATWATER AVE.

SAFE GAP TIME (W/3.5+4) = N/A SEC.

Morning Intervals

No.
Peds.: Time: Gaps:

EL	NL	EAST LEG	NORTH LEG	# of Gaps	# of Conflicts
5	3	8:30-8:35 , ,	,		
1	4	8:35-8:40 ,	,		
		8:40-8:45 ,	,		
		8:45-8:50 ,	, ,		
		8:50-8:55 , ,	,		
		8:55-9:00 ,	,		

Afternoon Intervals

No./
Peds.: Time: Gaps:

		EAST LEG	NORTH LEG
2	4	3:30-3:35 ,	, ,
6	7	3:35-3:40 ,	,
		3:40-3:45 , ,	,
		3:45-3:50 , ,	, ,
		3:50-3:55 ,	0,

Comments/Conflicts

Janet I. McDougald Public School has 525 students and 310 students are bussed. No conflicts were observed. Only 1 student that lives on the north side of Atwater Avenue crossed on the north side in the afternoon. 21 of 30 students crossing on the west leg of the intersection live on the west side of Cawthra Road.

Recommendations

That the Crossing Guard currently located at the intersection of Cawthra Road and Atwater Avenue for students attending Janet I. McDougald Public School, 1500 Ogden Avenue, be retained as the warrants have been met.

Observations

A) Volume of Traffic: (See Intersection Plan)

B) Number of Crossing Pedestrians

☒ Heavy ☐ Light ☐ Intermittent

A.M.

12 EAST LEG

27 WEST LEG

39 TOTAL

P.M.

30 WEST LEG

11 EAST LEG

41 TOTAL

4b Site Inspection Report - Traffic Safety Council

Observers Complete All Questions		
File Number: RT.10. Janet I. McDougald Public	File Number: RT.10.	Ward 1
Observed By: A. Liya (am)	Deborah Goss (am)	S. Duffin (am)
Date of Inspection: 2012 09 18	Inspection Time: 8:25 AM 3:30 PM	
Requested By: TSC Recommendation	Prepared By: A. Liya	Request For: Retention of Crossing Guard

Weather Conditions: ☐ Dry ☐ Sunny ☒ Rain ☐ Snow ☐ Other:

Site

School: Janet I. McDougald Public School	Address: 1500 Ogden Avenue	School Times: 9:00 AM 3:30 PM Student Population: No. of School Buses:
School:	Address:	School Times: AM PM Student Population: No. of School Buses:
School:	Address:	School Times: AM PM Student Population: No. of School Buses:

Location: (Please identify the location with reference to nearest intersection. Indicate nearest school and address.)

CAWTHRA RD. / ATWATER AVE.

Type of Crossing: ☒ 4 Way Intersection ☐ 3 Way Intersection ☐ Midblock (i.e., not at Intersection)
 Type of Control: ☐ Traffic Lights ☐ Yield Signs ☐ No Control
☐ Stop Signs (Traffic is stopped on one street only) ☐ All Way Stop (Traffic is stopped in all directions)

Part 1 Site Conditions

School Signs:	<input type="checkbox"/> School Area Signs	<input type="checkbox"/> School crossing Signs	<input type="checkbox"/> Parking/Stopping Prohibition
Posted Speed Limit:	<input type="radio"/> 40 km/hr	<input checked="" type="radio"/> 50 km/hr	<input type="radio"/> 60 km/hr <input type="checkbox"/> Other km/hr
Visibility of Crossing Pedestrians:	<input type="radio"/> Poor	<input type="radio"/> Fair	<input checked="" type="radio"/> Good
Sight Obstructions:	<input type="checkbox"/> Hedges	<input type="checkbox"/> Trees	<input type="checkbox"/> Fences <input type="checkbox"/> Bus Shelter
	<input type="checkbox"/> Newspaper Boxes	<input type="checkbox"/> Other (Specify)	
Road Grade:	<input checked="" type="radio"/> Flat	<input type="radio"/> Incline	<input type="radio"/> Decline
Road Geometrics:	<input checked="" type="radio"/> Straight	<input type="radio"/> Curved	
Road Width: N/A	<input type="radio"/> Feet <input type="radio"/> Metres	Curb to Curb: <input type="radio"/> Feet <input type="radio"/> Metres	Curb to Median: <input type="radio"/> Feet <input type="radio"/> Metres
Road Conditions:	<input type="radio"/> Dry <input checked="" type="radio"/> Wet	<input type="checkbox"/> Snow Covered	<input type="checkbox"/> Ice
Sidewalks:	<input type="checkbox"/> Not Present	<input checked="" type="checkbox"/> North	<input checked="" type="checkbox"/> South <input checked="" type="checkbox"/> East <input checked="" type="checkbox"/> West
Proximity to School:	<input type="checkbox"/> In Front of	<input checked="" type="checkbox"/> Within 500	<input type="radio"/> Feet <input type="radio"/> Metres
Route Survey:	<input type="checkbox"/> Shopping Area	<input type="checkbox"/> Construction	<input type="checkbox"/> Driveway <input type="checkbox"/> Other (Specify)
Road Geometrics:	<input type="checkbox"/> Transit Bus Stop	<input type="checkbox"/> Underpass	<input type="checkbox"/> Parked Vehicles Within <input type="radio"/> Feet <input type="radio"/> Metres

Warrant Survey

Check Appropriate Box For The Access Required

4c

Location:

CAWTHRA RD. / ATWATER AVE.

SAFE GAP TIME (W/3.5+4) = N/A SEC.

Morning Intervals

No.

Peds.: Time:

Gaps:

		Turning Traffic West and South Legs (W = heavy, S = light)	# of Gaps	# of Conflicts
2	8:25-8:30	////,////		
	8:30-8:35	////////,////////,///,////////,////		
11	8:35-8:40	///,////,////,////////,///		
6	8:40-8:45	////,////////,0,////////		
	8:45-8:50	0////////,///,////////,///		
	8:50-8:55	////////,///,////////,///,////////,///		

Afternoon Intervals

No./

Peds.: Time:

Gaps:

Comments/Conflicts

Rainy day. No conflicts observed.

Recommendations

That the Crossing Guard currently located at the intersection of Cawthra Road and Atwater Avenue, for students attending Janet I. McDougald Public School, 1500 Ogden Avenue, be retained as the warrants have been met.

Observations

A) Volume of Traffic: (See Intersection Plan)

B) Number of Crossing Pedestrians

☒ Heavy ☐ Light ☐ Intermittent

AM

PM

4d

SEPT. 6 @ 18 CAWTHRA RD @ ATWATER AVE. @

Corporate Services Department
Legislative Services Division
Office of the City Clerk

8²⁵ AM @ 330

City of Mississauga
300 City Centre Drive
MISSISSAUGA ON L5B 3C1



Leading today for tomorrow

FAX: 905-615-4181
www.mississauga.ca

June 27, 2012

To: Principal
Janet I. McDougald Public School
1500 Ogden Avenue
Mississauga ON

Re: Installation of a Temporary Crossing Guard
Reference: TSC-0088-2012/ GC-0415-2012

Traffic Safety Council on May 23, 2012 considered the above captioned matter and recommended the following:

TSC-0088-2012

1. That a Crossing Guard be installed at the north east corner of Cawthra Road and Atwater Avenue, in September 2012, at the beginning of the 2012 school year, in conjunction with the opening of Janet I. McDougald Public School, on a temporary basis as a proactive measure, as the traffic warrants have been met.
2. That the Site Inspection Subcommittee of Traffic Safety Council be requested to conduct two (2) site inspections at the intersection of Cawthra Road and Atwater Avenue in September 2012 to determine if sufficient student pedestrians are crossing the intersection to meet the pedestrian warrants for retention of the Crossing Guard.
3. That the Transportation and Works Department be requested to replace the faded Step by Step pedestrian information signs posted on the signal poles on all legs of the intersection.
4. That the Traffic Safety Council notify the principal of Janet I. McDougald Public School that the subject crossing guard is being placed at the intersection of Cawthra Road and Atwater Avenue on a trial basis and that should the warrants for the Crossing Guard not be met at the site inspections conducted in September 2012, Traffic Safety Council may recommend that the Crossing Guard be removed. Further, Traffic Safety Council will request that the Principal notify parents of the decision of Traffic Safety Council.

June 27, 2012

.../ Page 2

This recommendation was approved at General Committee on May 30, 2012 and subsequently adopted at Council, on June 6, 2012.

A handwritten signature in black ink, appearing to read "Wilson", with a stylized, cursive script.

Laura Wilson,
Legislative Coordinator
(905) 615-3200 ext. 5425

cc. J. S. Gill, Controller, Facilities & Transportation, Peel District School Board
J. McDougald, Trustee, Peel District School Board
S. Duffin, Crossing Guard Supervisor (via email)
A. Bate, Supervisor, Traffic Operations (via email)
Councillor J. Tovey, Ward 1

Laura Wilson

Subject: FW: Transportation Eligibility reassessment Janet McDougald P.S.
Attachments: JANET MCDOUGALD K TO 5 NUMBERS.png; Sheelagh Duffin.vcf; Sheelagh Duffin.vcf

—Original Message—

From: Sheelagh Duffin
Sent: April 18, 2012 4:45 PM
To: Laura Wilson
Subject: FW: Transportation Eligibility reassessment Janet McDougald P.S.

Hi Laura,

Would you kindly schedule a Site Inspection as soon as possible at the intersection of Cawthra Road and Atwater Avenue for the students of Janet McDougald Public School. The Site Inspection would be to determine if there is a warrant for a crossing guard based solely on traffic as students will not be crossing here until September 2012, the start of the new school year, when the new Janet McDougald Public School will be ready for students. The times for the inspection would be 8:30 - 9:00 am and 3:30 - 4:00 pm.

Thank you.

Sheelagh
Supervisor, Crossing Guards
City of Mississauga

JANET McDUGALD PS
East of Cawthra Rd

Purple - walkers

7
 8
 9
 10
 11
 12

4 - 5 = 26

Corporate Services Department
Legislative Services Division
Office of the City Clerk

City of Mississauga
300 City Centre Drive
MISSISSAUGA ON L5B 3C1

FAX: 905-615-4181
www.mississauga.ca



Leading today for tomorrow

November 26, 2010

Principal
Hartsdale Avenue Public School
1500 Ogden Avenue
Mississauga, ON

Re: Removal of Crossing Guard – Hartsdale Avenue Public School (Ward 1)
Reference: TSC-0241-2010/ Resolution 0274-2010
File: RT.10.Hartsdale (W1)

Traffic Safety Council on November 17, 2010, considered the above captioned matter and recommended the following:

TSC-0241-2010

That the crossing guard at the intersection of Cawthra Road and Atwater Avenue for the students attending Hartsdale Avenue Public School, 1500 Ogden Avenue be removed as of December 20, 2010, as the warrants are no longer met and no students in kindergarten up to grades 5 cross at this intersection.

This recommendation was adopted by City Council on November 24, 2010.

A handwritten signature in black ink, appearing to read "S. Smith".

Sacha Smith
Legislative Coordinator
(905) 615-3200 ext. 4516

cc: Mr. J. S. Gill Controller, Facilities & Transport, Peel District School Board
Ms. J. McDougald, Trustee, Peel District School Board
Mr. A. Bate, Supervisor, Traffic Operations (via email)
Ms. S. Duffin, Crossing Guard Supervisor (via email)
Councillor C. Corbasson, Ward 1

Site Inspection Report - Traffic Safety Council

Observers

Complete All Questions

File Number:

RT.10. Hartsdale Public School

File Number:

RT.10.

Ward

Observed By:

S. Duffin

D. Castronova

Traffic Safety Council

P. Westbrook

NOV 17 2010

Date of Inspection:

2010 09 13

Inspection Time:

8:25 AM

3:30 PM

Requested By:

TSC

Prepared By:

S. Duffin/P. Westbrook

Request For:

Remove a crossing guard

Weather Conditions: ☒ Dry ☐ Sunny ☐ Rain ☐ Snow ☐ Other:

Site

School:

Hartsdale Public School

Address:

1500 Ogden Avenue

School Times:

9:00

AM 3:30

PM

Student Population:

No. of School Buses:

School:

Address:

School Times:

AM

PM

Student Population:

No. of School Buses:

School:

Address:

School Times:

AM

PM

Student Population:

No. of School Buses:

Location: (Please identify the location with reference to nearest intersection. Indicate nearest school and address.)

CAWTHRA RD. / ATWATER AVE.

Type of Crossing: ☒ 4 Way Intersection ☐ 3 Way Intersection ☐ Midblock (i.e., not at Intersection)Type of Control: ☒ Traffic Lights ☐ Yield Signs ☐ No Control☐ Stop Signs (Traffic is stopped on one street only) ☐ All Way Stop (Traffic is stopped in all directions)

Part 1 Site Conditions

School Signs:

☐ School Area Signs☐ School crossing Signs☐ Parking/Stopping Prohibition

Posted Speed Limit:

☐ 40 km/hr☐ 50 km/hr☐ 60 km/hr☐ Other

km/hr

Visibility of Crossing Pedestrians: ☐ Poor☐ Fair☒ Good

Sight Obstructions:

☐ Hedges☐ Trees☐ Fences☐ Bus Shelter☐ Newspaper Boxes☐ Other (Specify)

Road Grade:

☒ Flat☐ Incline☐ Decline

Road Geometrics:

☒ Straight☐ Curved

Road Width:

☐ Feet☐ Metres

Curb to Curb:

☐ Feet☐ Metres

Curb to Median:

☐ Feet☐ Metres

Road Conditions:

☐ Dry☒ Wet☐ Snow Covered☐ Ice

Sidewalks:

☐ Not Present☒ North☒ South☒ East☒ West

Proximity to School:

☐ In Front of☐ Within☐ Feet ☐ Metres

Route Survey:

☐ Shopping Area☐ Construction☐ Driveway☐ Other (Specify)

Road Geometrics:

☐ Transit Bus Stop☐ Underpass☐ Parked Vehicles Within☐ Feet☐ Metres

4j

Warrant Survey

Location:

Check Appropriate Box For The Access Required

CAWTHRA RD. / ATWATER AVE.

SAFE GAP TIME (W/3.5+4) = n/a SEC.

Morning Intervals

No.

Peds.: Time:

Gaps:

of Gaps

of Conflicts

8:20-8:25 TURNING TRAFFIC ONLY

8:25-8:30 // // // // // // // // // // // // //

8:30-8:35 // // // // // // // // //

8:35-8:40 // // // // // // // // // //

8:40-8:45 // // // // // // // // //

8:45-8:50 // // // // // // //

8:50-8:55 // // // // // //

8:55-9:00

Afternoon Intervals

No./

Peds.: Time:

Gaps:

3:30-3:35 // // // // //

3:35-3:40 // // // // //

3:40-3:45 // // // // //

3:45-3:50 // // // // // //

3:50-3:55 // // // // //

3:55-4:00

Comments/Conflicts

High school students crossing here or mid-block.

Recommendations

See Oct. 19th inspection for recommendations.

Observations

A) Volume of Traffic: (See Intersection Plan)

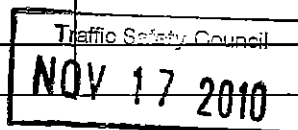
B) Number of Crossing Pedestrians

☐ Heavy ☐ Light ☒ Intermittent

0 AM 0 PM

Site Inspection Report - Traffic Safety Council

Observers Complete All Questions		File Number:	Ward
RT.10. Hartsdale Public School		RT.10.	1
Observed By:			
S. Duffin	D. Yaunan		
P. Westbrook	E. Lethbridge		
Date of Inspection:	Inspection Time:		
2010 09 29	8:25 AM 3:30 PM		
Requested By:	Prepared By:	Request For:	
TSC	S. Duffin	Remove a crossing guard	



Weather Conditions: ☒ Dry ☐ Sunny ☐ Rain ☐ Snow ☐ Other:

Site

School:	Address:	School Times:	9:00 AM 3:30 PM
Hartsdale Public School	1500 Ogden Avenue	Student Population:	
		No. of School Buses:	
School:	Address:	School Times:	AM PM
		Student Population:	
		No. of School Buses:	
School:	Address:	School Times:	AM PM
		Student Population:	
		No. of School Buses:	

Location: (Please identify the location with reference to nearest intersection. Indicate nearest school and address.)

CAWTHRA RD. / ATWATER AVE.

Type of Crossing: ☒ 4 Way Intersection ☐ 3 Way Intersection ☐ Midblock (i.e., not at Intersection)
 Type of Control: ☒ Traffic Lights ☐ Yield Signs ☐ No Control
☐ Stop Signs (Traffic is stopped on one street only) ☐ All Way Stop (Traffic is stopped in all directions)

Part 1 Site Conditions

School Signs:	<input type="checkbox"/> School Area Signs	<input type="checkbox"/> School crossing Signs	<input type="checkbox"/> Parking/Stopping Prohibition
Posted Speed Limit:	<input type="radio"/> 40 km/hr	<input type="radio"/> 50 km/hr	<input type="radio"/> 60 km/hr <input type="checkbox"/> Other km/hr
Visibility of Crossing Pedestrians:	<input type="radio"/> Poor	<input type="radio"/> Fair	<input checked="" type="radio"/> Good
Sight Obstructions:	<input type="checkbox"/> Hedges	<input type="checkbox"/> Trees	<input type="checkbox"/> Fences <input type="checkbox"/> Bus Shelter
	<input type="checkbox"/> Newspaper Boxes	<input type="checkbox"/> Other (Specify)	
Road Grade:	<input checked="" type="radio"/> Flat	<input type="radio"/> Incline	<input type="radio"/> Decline
Road Geometrics:	<input checked="" type="radio"/> Straight	<input type="radio"/> Curved	
Road Width:	<input type="radio"/> Feet <input type="radio"/> Metres	Curb to Curb:	<input type="radio"/> Feet <input type="radio"/> Metres
		Curb to Median:	<input type="radio"/> Feet <input type="radio"/> Metres
Road Conditions:	<input checked="" type="radio"/> Dry <input type="radio"/> Wet	<input type="checkbox"/> Snow Covered	<input type="checkbox"/> Ice
Sidewalks:	<input type="checkbox"/> Not Present	<input checked="" type="checkbox"/> North	<input checked="" type="checkbox"/> South <input checked="" type="checkbox"/> East <input checked="" type="checkbox"/> West
Proximity to School:	<input type="checkbox"/> In Front of	<input type="checkbox"/> Within	<input type="radio"/> Feet <input type="radio"/> Metres
Route Survey:	<input type="checkbox"/> Shopping Area	<input type="checkbox"/> Construction	<input type="checkbox"/> Driveway <input type="checkbox"/> Other (Specify)
Road Geometrics:	<input type="checkbox"/> Transit Bus Stop	<input type="checkbox"/> Underpass	<input type="checkbox"/> Parked Vehicles Within <input type="radio"/> Feet <input type="radio"/> Metres

Warrant Survey

Location:

Check Appropriate Box For The Access Required

CAWTHRA RD. / ATWATER AVE.

SAFE GAP TIME (W/3.5+4) = n/a SEC.

Morning Intervals

No.

Peds.: Time:

Gaps:

of Gaps

of Conflicts

8:20-8:25 TURNING TRAFFIC

8:25-8:30 |||| |||| || |||| |||| |||| ||||

8:30-8:35 |||| |||| |||| |||| |

8:35-8:40 |||| |||| | |||| |||| |||| ||

8:40-8:45 |||| |||| |||| |||| ||

8:45-8:50 |||| || |||| || |||| |||| ||

8:50-8:55 |||| |||| | ||||

8:55-9:00

Afternoon Intervals

No./

Peds.: Time:

Gaps:

3:30-3:35 ||| ||

3:35-3:40 |||| |||| |||| || |||| |||| ||||

3:40-3:45 |||| |||| ||

3:45-3:50 || |||| |||| ||||

3:50-3:55 |||| |||| ||

1 3:55-4:00 |||| || |||| |||| |||| ||

Comments/Conflicts

Recommendations

See Oct. 19th inspection for recommendations

Observations

A) Volume of Traffic: (See Intersection Plan)

B) Number of Crossing Pedestrians

☐ Heavy ☐ Light ☒ Intermittent

0 AM 1 PM

Site Inspection Report - Traffic Safety Council

Observers

Complete All Questions

File Number:

RT.10. Hartsdale Public School

File Number:

RT.10.

Ward

1

Observed By:

S. Duffin

D. Castronova

Traffic Safety Council

P. Westbrook

E. Lethbridge

NOV 17 2010

Date of Inspection:

2010 10 19

Inspection Time:

8:25 AM

3:30 PM

Requested By:

TSC

Prepared By:

P. Westbrook

Request For:

Remove a crossing guard

Weather Conditions: ☒ Dry ☐ Sunny ☐ Rain ☐ Snow ☐ Other:

Site

School:

Hartsdale Public School

Address:

1500 Ogden Avenue

School Times:

9:00

AM 3:30

PM

Student Population:

No. of School Buses:

School:

Address:

School Times:

AM

PM

Student Population:

No. of School Buses:

School:

Address:

School Times:

AM

PM

Student Population:

No. of School Buses:

Location: (Please identify the location with reference to nearest intersection. Indicate nearest school and address.)

CAWTHRA RD. / ATWATER AVE.

Type of Crossing: ☒ 4 Way Intersection ☐ 3 Way Intersection ☐ Midblock (i.e., not at Intersection)Type of Control: ☒ Traffic Lights ☐ Yield Signs ☐ No Control☐ Stop Signs (Traffic is stopped on one street only) ☐ All Way Stop (Traffic is stopped in all directions)

Part 1 Site Conditions

School Signs:

☐ School Area Signs☐ School crossing Signs☐ Parking/Stopping Prohibition

Posted Speed Limit:

☐ 40 km/hr☐ 50 km/hr☐ 60 km/hr☐ Other

km/hr

Visibility of Crossing Pedestrians:

☐ Poor☐ Fair☒ Good

Sight Obstructions:

☐ Hedges☐ Trees☐ Fences☐ Bus Shelter☐ Newspaper Boxes☐ Other (Specify)

Road Grade:

☒ Flat☐ Incline☐ Decline

Road Geometrics:

☒ Straight☐ Curved

Road Width:

☐ Feet☐ Metres

Curb to Curb:

☐ Feet☐ Metres

Curb to Median:

☐ Feet☐ Metres

Road Conditions:

☒ Dry☐ Wet☐ Snow Covered☐ Ice

Sidewalks:

☐ Not Present☒ North☒ South☒ East☒ West

Proximity to School:

☐ In Front of☐ Within☐ Feet ☐ Metres

Route Survey:

☐ Shopping Area☐ Construction☐ Driveway☐ Other (Specify)

Road Geometrics:

☐ Transit Bus Stop☐ Underpass☐ Parked Vehicles Within☐ Feet☐ Metres

4n

Warrant Survey

Location:

Check Appropriate Box For The Access Required

CAWTHRA RD. / ATWATER AVE.

SAFE GAP TIME (W/3.5+4) = n/a SEC.

Morning Intervals

No.

Peds.: Time: Gaps:

of Gaps # of Conflicts

8:20-8:25

8:25-8:30 |||| |||| |||| |||| |||| |||| ||

8:30-8:35 |||| | |||| |||| ||||

8:35-8:40 |||| |||| |||| |||| |||| |||

8:40-8:45 |||| |||| |||| || |||| |||| |

8:45-8:50 |||| |||| || |||| |||| ||||

8:50-8:55 |||| || |||| | |||| |||| ||

8:55-9:00

Afternoon Intervals

No./

Peds.: Time: Gaps:

3:25-3:30 |||| || || ||

3:30-3:35 || |||| ||

3:35-3:40 |||| |||| |||| |

3:40-3:45 || |||| | |||

3:45-3:50 || ||||

3:50-3:55 |||| |||| |||

1 3:55-4:00

Comments/Conflicts**Recommendations**

That the crossing guard at the intersection of Cawthra Road and Atwater Avenue for the students attending Hartsdale Public School, 1500 Ogden Avenue be removed as of December 20, 2010, as the warrants are no longer met and no students in kindergarten up to grades 5 cross at this intersection.

Observations

A) Volume of Traffic: (See Intersection Plan)

B) Number of Crossing Pedestrians

☐ Heavy
 ☐ Light
 ☒ Intermittent

0 AM 0 PM

Corporate Services Department
Legislative Services Division
Office of the City Clerk

City of Mississauga
300 City Centre Drive
MISSISSAUGA ON L5B 3C1



Leading today for tomorrow

FAX: 905-615-4181
www.mississauga.ca

May 14, 2010

Principal
Lynwood Public School
498 Hartsdale Ave.
Mississauga, ON

Principal
Neil C. Matheson Public School
1500 Ogden Ave.
Mississauga, ON

Re: Crossing Guard Location Changes- Byngmount Beach Public School/ Principal
Lynwood Public School/ Neil C. Matheson Public School (Ward 1)
Reference: TSC-0116-2010/ GC-0363-2010
TSC-0118-2010/ GC-0365-2010
File: RT.10.Byngmount Beach/RT.10.Lyndwood/RT.10.Neil C. Matheson (W1)

Traffic Safety Council on April 28, 2010, considered the above captioned matters and recommended the following:

TSC-0116-2010

That the email correspondence dated April 15, 2010 from Sheelagh Duffin, Crossing Guard Supervisor regarding school closures of Byngmount Beach Public School and Lyndwood Public School, which will affect the current crossing guard locations be received.

TSC-0118-2010

1. That a crossing guard be implemented at the intersection of Cawthra Road and Atwater Avenue in September 2010 as the warrants have been met due to the school boundary change that would require Lynwood Public School, 498 Hartsdale Avenue students to attend Neil C. Matheson Public School, 1500 Ogden Avenue, while Lynwood Public School is under construction.
2. That the Site Inspection Subcommittee of Traffic Safety Council be requested to re-inspect the intersection of Cawthra Road and Atwater Avenue during the second and fourth weeks of September 2010, and the third week of October 2010, to determine if the warrants for a crossing guard are still being met.

.../2



Laura Wilson

From: [REDACTED]
Sent: 2012/09/07 12:40 AM
To: Laura Wilson
Subject: RE: Request for site inspection

Traffic Safety Committee

SEP 26 2012

Thank you very much for your response Laura.
 Will be looking forward to hearing from you again. I forgot to include my phone

Thanks again

[REDACTED]

From: Laura.Wilson@mississauga.ca
To: [REDACTED]
Date: Thu, 6 Sep 2012 09:00:47 -0400
Subject: RE: Request for site inspection

Hello Mr. [REDACTED]

Thank you for bringing this to our attention.

I will put your email on the Traffic Safety Council agenda for the committee's review at their meeting on September 26, 2012.

Please be advised that as per the City of Mississauga's policy regarding Traffic Safety in School Zones (please see attached), Traffic Safety Council can request the placement of a Crossing Guard for students in Kindergarten to Grade 5. Exceptions can be made and temporary Crossing Guards can be requested for students in Grade 6 to 8 only if there is construction in the area. Therefore, Traffic Safety Council will be unable to place a Crossing Guard as per your request, however, the committee can decide to take other action and I will advise as to their direction.

If you are interested in more information with respect to Crossing Guards and their placement, please contact Sheelagh Duffin, Crossing Guard Supervisor at 905-896-5167 or via email at sheelagh.duffin@mississauga.ca.

Thank you again,

Laura Wilson
 Legislative Coordinator
 The City of Mississauga
 Legislative Services, Office of the City Clerk
<http://www.mississauga.ca/portal/cityhall/officeofthecityclerk>

From: Sacha Smith **On Behalf Of** Traffic Safety
Sent: 2012/09/05 3:52 PM
To: Laura Wilson
Subject: FW: Request for site inspection

5a

From: [REDACTED]
Sent: 2012/09/04 11:16 PM
To: Traffic Safety
Subject: Request for site inspection

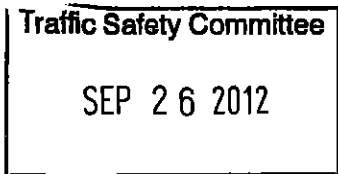
I am hereby requesting a site inspection for a crossing guard at the Kinglet and Bristol Rd intersection in Mississauga. Most of the kids that live on the north side of Bristol that attend Fallingbrook PS and Rick Hansen Secondary normally walk across Bristol Road at Kinglet/Lismic to get to school and since there are no traffic lights there it has become very dangerous especially with kids from nearby high schools sometimes drag racing on their way from school. My son was almost run over last year by a car trying to make a left turn on Kinglet and it is only a matter of time before something bad happens. I sincerely hope that you would consider my request, this is the first time I have taken the time to write about anything so needless to say I feel very strongly about it.

Thank You

[REDACTED]

Laura Wilson

From: [REDACTED]
Sent: 2012/09/06 4:11 PM
To: Sheelagh Duffin; Laura Wilson
Subject: Burnhamthorpe/Winston Churchill



Hi Laura,

Just as an observation and based on walking time from Ashgrove PS neighbourhoods, 8:10 -8:40 and 3:10 to 3:40 might be ore optimal times.

Thanks, [REDACTED]

From: Sheelagh Duffin [mailto:Sheelagh.Duffin@mississauga.ca]
Sent: September-06-12 11:52 AM
To: Laura Wilson
Cc: [REDACTED]
Subject: FW: Burnhamthorpe/Winston Churchill

Hi Laura,

Would you kindly schedule a safety review for the intersection of Winston Churchill Boulevard and Burnhamthorpe Road for the students of Erin Mills SR PS. The times for the inspection would be 8:20 - 8:50 am and 3:00 to 3:30 pm.

[REDACTED] would like to be informed of the date of the inspection as he would like to attend.

Thank you.

Sheelagh



From: [REDACTED]
Sent: 2012/09/05 7:00 PM
To: Sheelagh Duffin
Cc: [REDACTED]
Subject: Burnhamthorpe/Winston Churchill

Hi Sheelagh,

Thanks for taking my call today and chatting about Burnhamthorpe/Winston Churchill intersection. I would very much appreciate it if you could advance our discussion with a safety study of this intersection.

Laura Wilson

From: Pat Saito
Sent: 2012/09/06 4:08 PM
To: Laura Wilson; Andy Bate
Subject: Action: School bus stop concern - ref. Mr. Ali


Traffic Safety Committee

SEP 26 2012

Good afternoon,

Councillor Saito would appreciate staff's assistance with reviewing the concerns noted below at Traffic Safety Council and providing her with a follow-up.

Mr. Ali has been provided with contact details for both school trustee Meredith Johnson and Student Transportation of Peel Region in order to pursue the concerns with them.

 Is not pleased with the relocation of the school bus stop on Gulfstream Way, which services Shelter Bay school. Felt where it was located last year was both safe and suitable for him to access. He feels the relocation is not safe and would like the stop to return to where it previously was.

Thank you kindly,
Michelle
Administrative Assistant
Ward 9 Councillor Pat Saito

"This e-mail may not be forwarded to anyone for any reason without express written permission of the author."

Laura Wilson

From: Sacha Smith on behalf of Traffic Safety
Sent: 2012/09/10 10:21 AM
To: Laura Wilson
Subject: FW: Crossing Guard issue

Traffic Safety Committee

SEP 26 2012

Follow Up Flag: Follow up
Flag Status: Flagged

-----Original Message-----

From: [REDACTED]
Sent: 2012/09/07 9:45 AM
To: Traffic Safety
Subject: Crossing Guard issue

Dear Sir/Madam,

I would like to inform you about the problem I face starting this school year.

My daughter started grade 6 in new School "The Valleys Senior Public school" and since both of us my wife and me leave the home early morning, she need to go to school on her own.

On intersection Bloor St. and Central Pkwy E there are Cross Guard persons from only to 8.30am, so the problem is that she need to cross the street at least at 8.25am and to wait in front of the school which is very close until 8.45 when the students enter the school after the bell ring.

Is there any possibility to have crossing guard for 10min longer until 8.40am at this intersection.

There are lot of parents whose children are also crossing at that time and who will support my suggestion as well.

I would appreciate any action from your end to improve saftey for kids at this intersection.

Best Regards,

[REDACTED]
[REDACTED]
[REDACTED]
[REDACTED]

9

Laura Wilson

From: Jim Tovey
Sent: 2012/09/11 4:21 PM
To: Laura Wilson
Subject: Re: Janet McDougald Public School

Traffic Safety Committee

SEP 26 2012

Yes, thank you. It will be constructive to have their input on the issue
Regards

Sent from my iPad

On 2012-09-11, at 3:54 PM, "Laura Wilson" <Laura.Wilson@mississauga.ca> wrote:

Hello,

I wanted to clarify that you are requesting that I place the resident's email and pictures on the Traffic Safety Council agenda for September 26 for the committee's review?

Your direction is much appreciated.

Sincerely,

Laura Wilson

Legislative Coordinator

The City of Mississauga

Legislative Services, Office of the City Clerk

905-615-3200 ext. 5425

<http://www.mississauga.ca/portal/cityhall/officeofthecityclerk>

9a

From: Lynn Judge **On Behalf Of** Jim Tovey
Sent: 2012/09/11 12:42 PM
To: Andy Bate; Laura Wilson
Subject: FW: Janet McDougald Public School

Photo's of part of the problem near the school

Lynn Judge

Executive Assistant to

Councillor Jim Tovey

Ward 1, City of Mississauga

905-896-5100

From: [redacted]
Sent: 2012/09/07 4:09 PM
To: Jim Tovey
Subject: Janet McDougald Public School

Hi Jim:

How are you? I imagine you will have had a busy but fun time at the Southside Shuffle.

The new Janet McDougald Public School is now open and there seems to be a traffic problem. As you may know, I live at [redacted] [redacted] The parking lot is used by School Staff. I was quite surprised by the traffic along our street in the morning and afternoon. I have attached 4 pictures for your perusal. This parking etc. extends several metres down the road on both sides and around the corner on to Kenmuir. While I haven't yet wandered over to Hartsdale and

9b

Northaven, a school staffer said that similar congestion exists on the east side. It may be that it is worse now due to first week. I wonder what it will be like when weather turns. I shudder to think what it will be like when it snows. I find it interesting that the school blocks off their driveway and parking lot. I am concerned about what this unprecedented traffic congestion does to our quality of living (albeit for only 1-2 hours per day) including but not limited to access to and from our driveway. I am also quite concerned about the overall safety for all concerned. It seems to me that there must be some parking controls and possible more parking on school property?? Your comments will be welcome. I haven't yet approached the school since experience tells me that they will not respond satisfactorily.

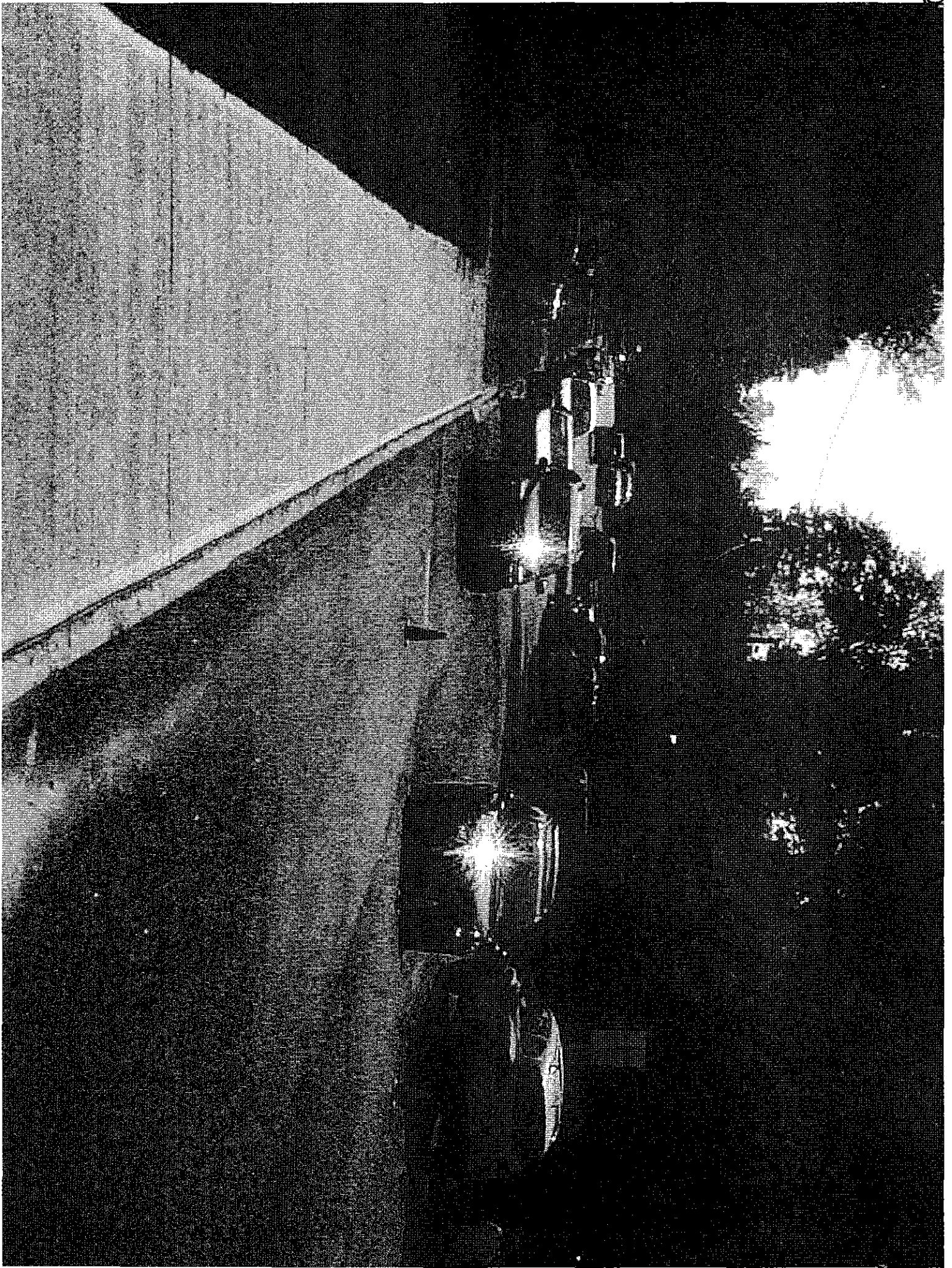
Picture #1 – taken while standing in parking lot. Note pylons blocking ingress to parking lot.

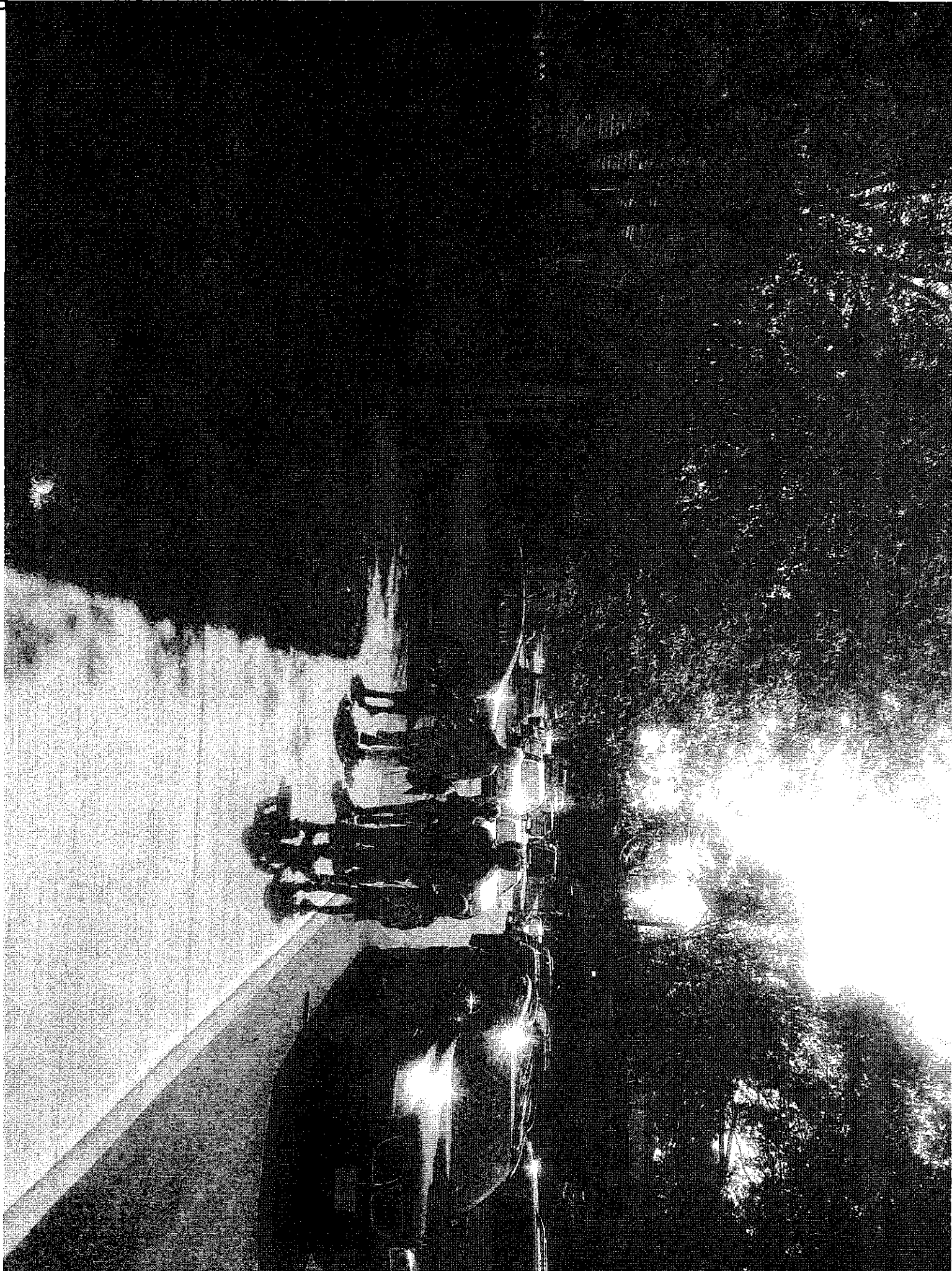
Picture #2 – same view as #1 but closer

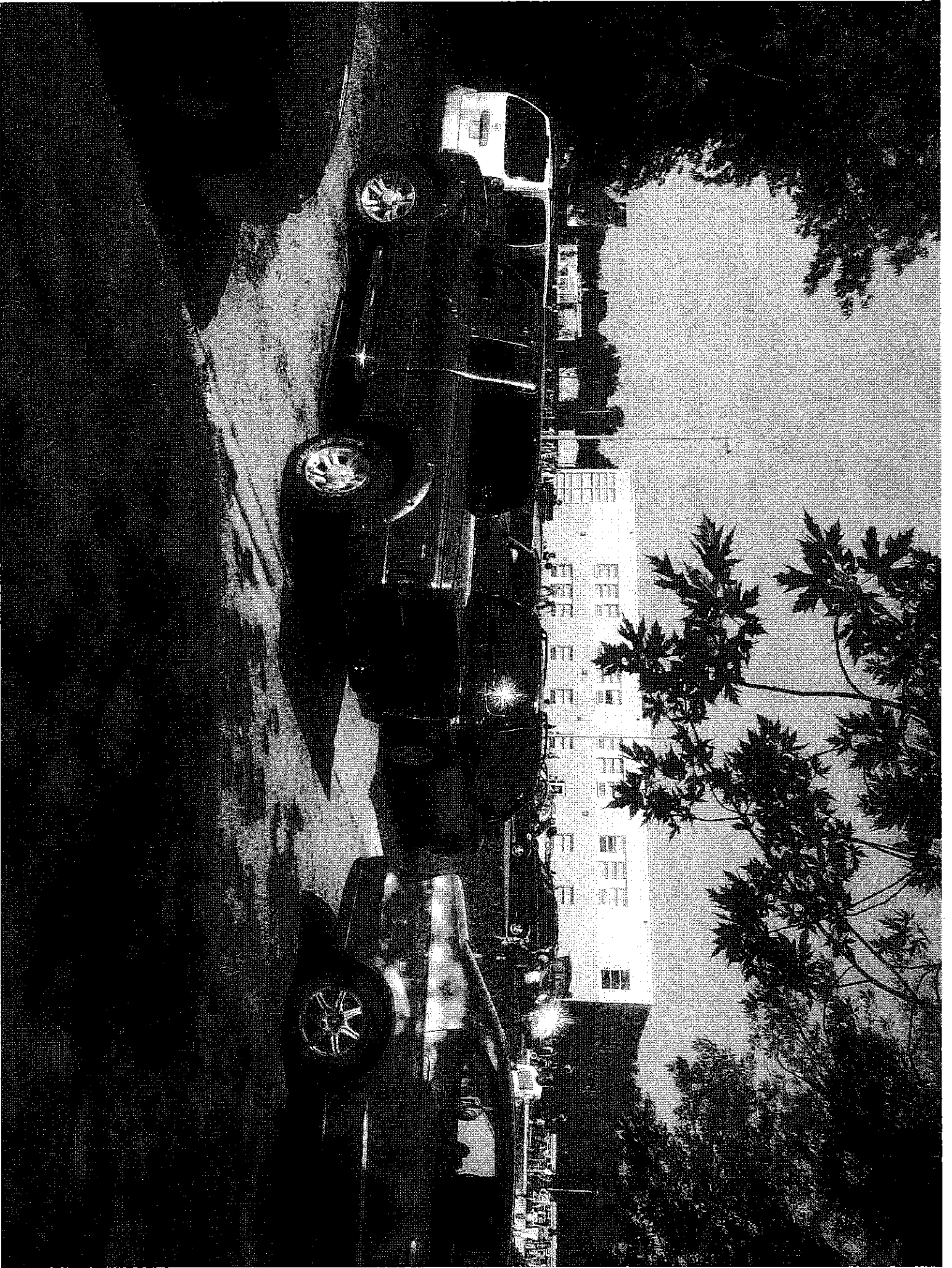
Picture #3 – taken from sidewalk

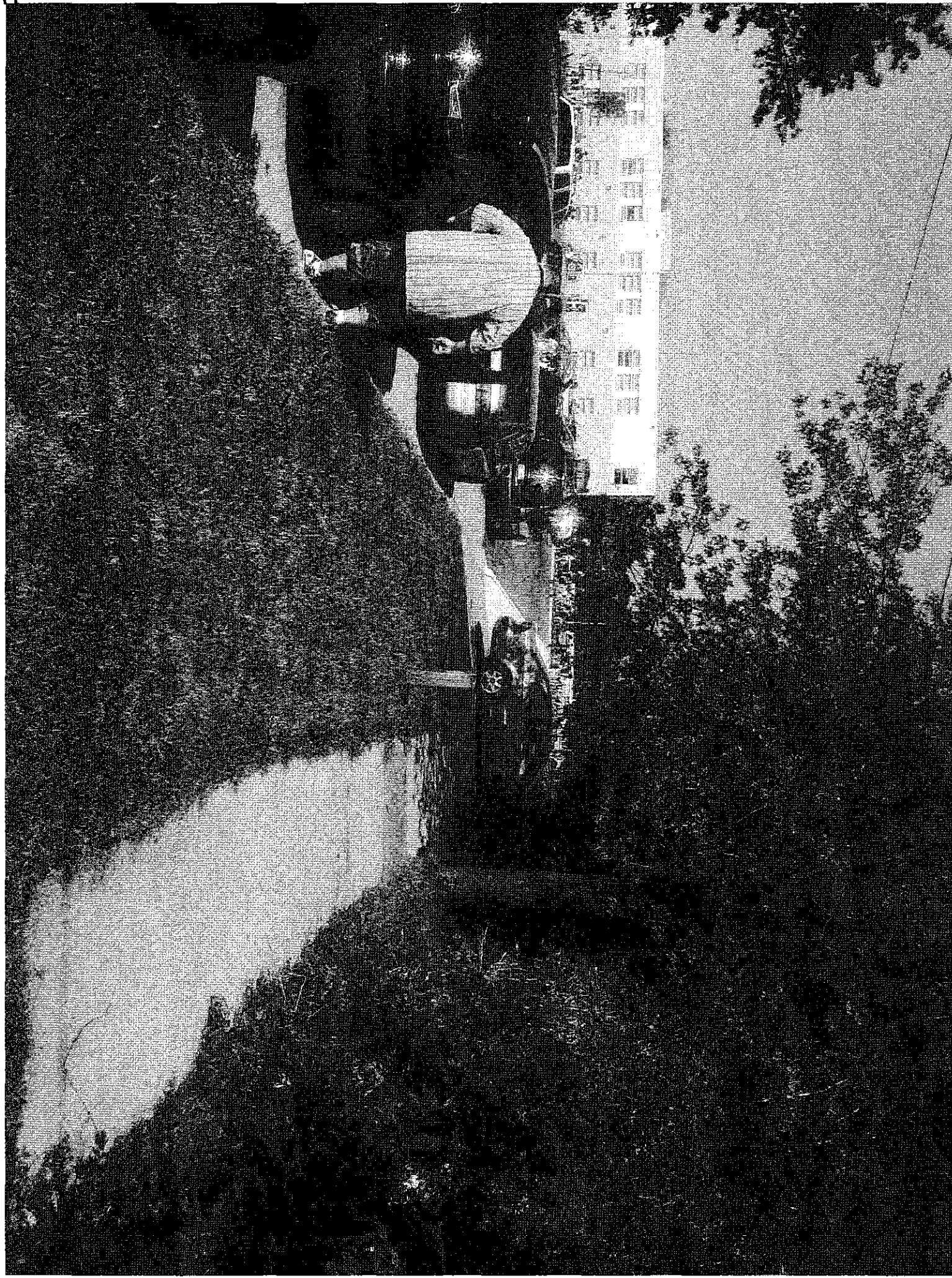
Picture #4 – taken from in front of

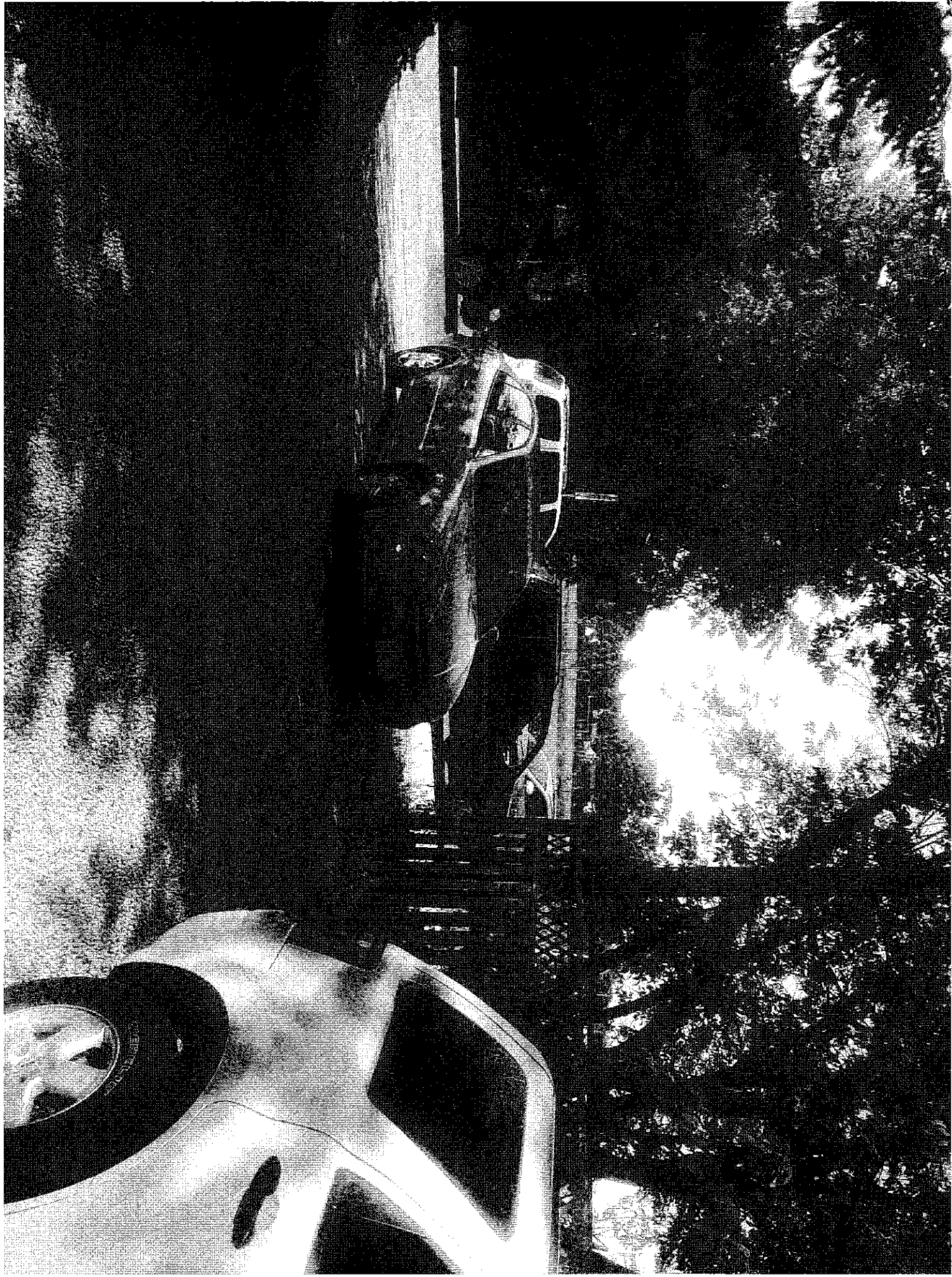
Regards,











Laura Wilson

From: George Carlson
Sent: 2012/09/17 10:57 AM
To: Laura Wilson
Subject: RE: General Inquiry - Thomas Street speed limit

Traffic Safety Committee

SEP 26 2012

Thanks Laura.

From: Laura Wilson
Sent: 2012/09/14 3:50 PM
To: Sacha Smith; George Carlson
Cc: 'jeff.white@peelsb.com'
Subject: RE: General Inquiry - Thomas Street speed limit

Hello,

I will place this on the Traffic Safety Council Agenda for September 26, 2012 for the Committee's review and consideration.

Sincerely,

Laura Wilson
 Legislative Coordinator
 The City of Mississauga
 Legislative Services, Office of the City Clerk
 905-615-3200 ext. 5425
<http://www.mississauga.ca/portal/cityhall/officeofthecityclerk>

From: Sacha Smith
Sent: 2012/09/14 3:40 PM
To: George Carlson
Cc: 'jeff.white@peelsb.com'; Laura Wilson
Subject: RE: General Inquiry - Thomas Street speed limit

I have copied Laura Wilson on this email as she is the coordinator for Traffic Safety Council.

Sacha Smith

Team Leader - Legislative Coordinator
 Legislative Services Division
 905-615-3200 ext. 4516
sacha.smith@mississauga.ca



From: George Carlson
Sent: 2012/09/14 3:08 PM
To: Sacha Smith
Cc: 'jeff.white@peelsb.com'
Subject: FW: General Inquiry - Thomas Street speed limit

Hi Sacha,

Councillor Carlson is asking if the Traffic Safety Council could look at this school walking route (Thomas Street) and provide any comments with respect to safety / speeding etc. The background email from the parent / resident is provided below.

Many thanks,

Kimberly for George Carlson, Councillor Ward 11
City of Mississauga
300 City Centre Drive, 3rd Floor
Mississauga, ON L5B 3C1
Office: 905-896-5011
Fax: 905-896-5863
E-mail: george.carlson@mississauga.ca
Website: www.georgecarlson.ca



-----Original Message-----

From: George Carlson <George.CARLSON@mississauga.ca>
Date: Thu, 13 Sep 2012 20:52:28
To: <[REDACTED]>
Subject: RE: General Inquiry - Thomas Street speed limit

Dear [REDACTED]

With your permission, Councillor Carlson would like to forward your concern to the Traffic Safety Council for them to look at this route, with a copy to Jeff White who is the Peel School Board Trustee. He would also like to copy Peel Regional Police for appropriate action.

Please advise if this is ok?

Many thanks,

Kimberly for

George Carlson, Councillor Ward 11
City of Mississauga

10b

300 City Centre Drive, 3rd Floor

Mississauga, ON L5B 3C1

Office: 905-896-5011

Fax: 905-896-5863

E-mail: george.carlson@mississauga.ca <<mailto:george.carlson@mississauga.ca>>

Website: www.georgecarlson.ca <<http://www.georgecarlson.ca/>>

<<http://www.mississauga.ca/portal/home>>

<<http://www.facebook.com/councillorgeorgecarlsonward11>>

<<http://twitter.com/CarlsonGeorge>>

<<http://www.flickr.com/photos/councillorgeorgecarlsonward11/>>

From:

Sent: September 11, 2012 12:24 PM

To: George Carlson

Subject: General Inquiry - Thomas Street speed limit

Dear George,

Thank you for the newsletter and update I received today.

I've been meaning to write with my inquiry for some time and the newsletter with your email address prompted me!

We live in the [REDACTED] sub division at the top of [REDACTED]. As is with the case of so many roads in Mississauga, Thomas St is becoming busier and busier. Myself and many of my neighbours have grave concerns about the speed of traffic on it, and the lack of monitoring by any traffic police. I wondered if you could best advise me how we can go about raising this issue and gaining support to slow cars down.

Many of our children don't qualify for a bus to Dolphin Middle School ([REDACTED]) and our kids are expected to walk and cross it at the busiest time of day when cars are flooding into Streetsville Go Station, speeding down the hill and running the traffic light as they are in such a hurry.

In addition, since the new filter lanes into Bankside and Wareham were introduced last year, the traffic has only speeded up even more as drivers no longer have to slow down behind cars turning left. The cars speed down the hill and then they hit the gas to get up it! Its terrible!!

We felt quite lucky last year the winter was so mild. It is an incredibly dangerous turn coming south off Erin Mills and right into Bankside, as the turn is on the brow of the hill and the camber takes the driver on a sideways skid up the grass verge if there is any ice (Or into a car waiting to exit). We consistently have horns honked and drivers drive too close as we turn into our subdivision as they treat Thomas street as if it is the same speed as Erin Mills (and my husband and I always signal early to keep them back!). Especially now the filter lanes have been introduced, the lanes are much narrower.

We also sometimes struggle to exit our subdivision with the tighter lane and turn right onto Thomas St, as cars whipping past, sometimes at 70kpm and more are so close as we turn onto it.

This is a huge frustration. It has been a growing frustration as a driver and now my son (who only turned 11 last week) is expected to walk this road daily, it is a real worry as a parent. We would like to see the same attention to speed and safety that the police give to Brittannia where the bridge was recently widened and 4 lane traffic is expected to travel at 50kpm. There are no where near the same number of pedestrians on that strip of road as there are on Thomas St and I have not seen any traffic police or monitoring in years.

What can we do??

Many thanks for your attention to this,

Laura Wilson

From: Laura Wilson
Sent: 2012/09/20 9:42 AM
To: George Carlson
Subject: RE: traffic intersection safety [REDACTED]
Attachments: Traffic Safety in School Zones Corporate Policy.pdf

Traffic Safety Committee

SEP 26 2012

Hello,

I am happy to put the email outlining the resident's concerns on the Traffic Safety Council Agenda for Wednesday, September 26, 2012 for the committee's review. However, as per the City's Corporate policy with respect to Traffic Safety in School Zones (attached), please be advised that Traffic Safety Council cannot recommend the placement of a Crossing Guard at school bus stops. With that said, they will review the concerns and make appropriate recommendations.

Many thanks,

Laura Wilson
 Legislative Coordinator
 The City of Mississauga
 Legislative Services, Office of the City Clerk 905-615-3200 ext. 5425
<http://www.mississauga.ca/portal/cityhall/officeofthecityclerk>

-----Original Message-----

From: George Carlson
Sent: 2012/09/18 2:46 PM
To: Laura Wilson
Subject: FW: traffic intersection safety

Hi Laura,

Can you please have Traffic Safety Council look at Erin Centre and Forest Hill for the feasibility of a crossing guard? Please see the email below from

Sincerely,

Kimberly for

George Carlson, Councillor Ward 11
 City of Mississauga
 300 City Centre Drive, 3rd Floor
 Mississauga, ON L5B 3C1
 Office: 905-896-5011
 Fax: 905-896-5863
 E-mail: george.carlson@mississauga.ca
 Website: www.georgecarlson.ca

>

> -----Original Message-----

> From: [REDACTED]
 > Sent: September 15, 2012 4:24 PM
 > To: George Carlson
 > Subject: traffic intersection safety

>

> Good day Mr. Carlson,

>

> I am writing to you to express my extreme concern about the traffic safety at the intersection of Erin Centre Blvd and Forest Hill Dr., where there is a 4 way stop sign. My son, along with several other children from 2 different schools have their school bus stop on the southeast corner of this intersection. All the kids have to cross the intersection at some point to get across to their stop and there are several other students crossing this intersection to walk to their local high schools. The drivers at this intersection are irresponsible and extremely dangerous. Many do not come to a complete stop and others drive into the intersection while previous drivers have not fully gone through. There is absolutely no concern for the pedestrians as the drivers start driving into the intersection when we are not even half way across the street and others do not even bother to stop at all. They do this even when parents are crossing with their children!! The main time of the problem is between 0730am and 0830am.

>

> I have reported this concern to the police and they will have the intersection monitored sporadically over the next few weeks. What else can the city do to ensure the safety of our children from these negligent and careless drivers? Can you put a crossing guard there in the morning? Something has to be done as parents cannot always be present and we need to feel that our children are safe when going back and forth from school.

>

> I look forward to hearing from you and discussing how we may solve this problem. I can be reached at home

>

>

> Regards,

Laura Wilson

From: Chris Fonseca
Sent: 2012/09/18 2:41 PM
To: Laura Wilson; Chris Fonseca; Anthony.McLoughlin@dpcdsb.org; Mario Pascucci
Subject: RE: Recommendation to remove a Crossing Guard- Willowbank Trail and Rathburn Road

Hello Laura,

Councillor Fonseca would like the Traffic Safety Committee to consider St. Vincent de Paul for a Walking Rate Program. Can you please forward this request to the appropriate staff for consideration.

Regards,

Deanna
 Ward 3

Traffic Safety Committee

SEP 26 2012

Deanna Dubicki
 Admin. Assistant to
 Chris Fonseca
 Councillor, Ward 3
 City of Mississauga
 905-896-5300

www.chrisfonseca.ca
 Facebook - chris Fonseca-Mississauga
 Follow me on Twitter - @Chris_Fonseca3

From: Laura Wilson
Sent: 2012/09/14 4:41 PM
To: Chris Fonseca; Anthony.McLoughlin@dpcdsb.org; Mario Pascucci
Subject: Recommendation to remove a Crossing Guard- Willowbank Trail and Rathburn Road
Importance: High

Hello,

Further to my email below, please be advised that on September 13, 2012, the Site Inspection Subcommittee of Traffic Safety Council conducted a site inspection to review the warrants for removing the Crossing Guard from the intersection of Rathburn Road and Willowbank Trail.

As a result of the aforementioned site inspection, the Subcommittee will make the following recommendation to Traffic Safety Council on September 26, 2012:

1. That the Crossing Guard located at the intersection of Rathburn Road and Willowbank Trail for students attending St. Vincent de Paul Catholic School, 665 Willowbank Trail, be removed as of December 21, 2012, as, similar to the site inspections conducted on April 5, 2012 and April 17, 2012, the warrants are no longer met and turning traffic is light at this intersection.

2. That the Principal of St. Vincent de Paul Catholic School be requested to notify the affected students and parents that the Crossing Guard currently located at the intersection of Rathburn Road and Willowbank Trail will be removed on December 21, 2012.

If passed by Traffic Safety Council this recommendation will be presented at General Committee on October 3, 2012 and at Council on October 17, 2012 for approval.

If you have any questions regarding Traffic Safety Council please do not hesitate to contact me. If you require further information regarding the warrants for placement of a Crossing Guard, please contact Sheelagh Duffin, Crossing Guard Supervisor at 905-896-5167 or via email at sheelagh.duffin@mississauga.ca.

Sincerely,

Laura Wilson
Legislative Coordinator
The City of Mississauga
Legislative Services, Office of the City Clerk
905-615-3200 ext. 5425
<http://www.mississauga.ca/portal/cityhall/officeofthecityclerk>

From: Laura Wilson
Sent: 2012/08/27 11:02 AM
To: Chris Fonseca; 'Anthony.McLoughlin@dpcdsb.org'; 'Mario Pascucci'
Subject: Possible Guard Removal Site Inspection - Rathburn and Willowbank
Importance: High

Hello Councillor Fonseca, Mr. McLoughlin and Mr. Pascucci,

Please be advised that further to the Traffic Safety Council recommendation below, a site inspection will be conducted on **September 13, 2012 at 8:30 a.m. - 9:00 a.m. and 3:30 p.m. - 4:00 p.m. to review the warrants for removing the Crossing Guard located at Rathburn Road and Willowbank Trail.**

TSC-0075-2012

1. That the Site Inspection Subcommittee of Traffic Safety Council be requested to conduct a site inspection to review the warrants for removing the Crossing Guard currently located at the intersection of Rathburn Road and Willowbank Trail for students attending St. Vincent de Paul Catholic School, 665 Willowbank Trail, in September 2012.
2. That the Transportation and Works Department be requested to re-paint the crosswalk lines at the intersection of Rathburn Road and Willowbank Trail.
3. That the email dated April 25, 2012 from Anthony McLoughlin, Principal, St. Vincent de Paul, with respect to concerns regarding the possible removal of the Crossing Guard at Rathburn Road and Willowbank Trail be received.
4. That the email dated April 25, 2012 from Councillor Chris Fonseca, Ward 3, with respect to concerns regarding the possible removal possible removal of the Crossing Guard at Rathburn Road and Willowbank Trail be received.

If you have any questions with respect to the warrants for placement of a Crossing Guard, please contact Sheelagh Duffin, Crossing Guard Supervisor at 905-896-5167 or via email at

126

sheelagh.duffin@mississauga.ca. If you require any information regarding Traffic Safety Council and this recommendation please feel free to contact me at the information below.

Sincerely,

Laura Wilson
Legislative Coordinator
The City of Mississauga
Legislative Services, Office of the City Clerk
905-615-3200 ext. 5425
<http://www.mississauga.ca/portal/cityhall/officeofthecityclerk>

Dismissal Report – September 2012**Attended by: Boris Swedak****September 12, 2012****St. Francis of Assisi Catholic School, Ward 2**

Traffic Safety Committee

SEP 26 2012

Adjacent to Park: Yes**Public Transit:** Yes, does not impact Dismissal Period**School Transport:** 1 cube van, 5 full size buses**Signage:** In place and adequate on both the school property & on City right of way**Kiss n' Ride:** Yes, a one way layout with exclusive bus lane adjacent to curb. The storage of automobiles in the afternoon is not practical due to the limited length of the driveway and the congestion caused by 5 buses.**Parking:** School lot located at the east side of property and consists of 2 long rows of parking, on the south side of Thorn Lodge Drive. Auxiliary parking is available on the north side of Thorn Lodge Drive in the St. Francis of Assisi Church parking lot.**Parental Behaviour:** Good.**Comments:**

Spoke to the Principal Steve Palmateer regarding the Dismissal Period and he requested a review of the Fire Route Signs in the school driveway. Many walkers were observed during this inspection. No conflicts were noted. Staff assisted with Dismissal procedures and the loading of buses. This is an older school site located within a residential setting and traffic is primarily school related.

Dismissal works well at St. Francis of Assisi with parents using not only the south side of Thorne Lodge Drive to park but also the St. Francis of Assisi Church parking lot opposite the school. All parents crossed the road with their children and no safety concerns were observed in relation to parents using this lot.

There is a City of Mississauga pool parking lot at the rear of the school which serves as an overflow parking facility should the need arise.

Recommendation:

1. That Parking Enforcement be requested to enforce parking infractions along Thorn Lodge Drive, in front of St. Francis of Assisi Catholic School, 2480 Thorn Lodge Drive, between 2:50 p.m. and 3:10 p.m.
2. That the Dufferin- Peel Catholic District School Board be requested to review the adequacy of the signage posted at the St. Francis of Assisi Catholic School driveway.

September 17, 2012

Edenrose Public School, Ward 6

Adjacent to Park: Yes

Public Transit: No

School Transport: 3 cube vans and 3 full size bus

Kiss n' Ride: Yes, a standard 3 lane one way with a bus storage adjacent to the curb.

Signs: Signage is adequate on City right of way and on school grounds, but ignored by a few parents.

Parking: The main parking lot is on South/ East side of the property and consists of 4 long rows of parking. The parking lot has a swing gate to close the lot off to parents during the morning and afternoon periods. There is also parking on the east side of Edenrose Street where permitted.

Parent Behaviour: Acceptable

Comments:

No left hand turn signs have been installed at the entrance of the school and have improved vehicular movements on this site. There is an unusually high number of parents driving to school to pick up their children which causes congestion along Edenrose Street. The school is located within walking distance for most of the students except for those students who are bussed. By 3:10 p.m. parents have parked in every legal parking spot on school property and along Edenrose Street. Many walkers were observed. No vehicular conflicts were observed. Staff wearing vests monitor students and administer bus loading. There is a Crossing Guard in place at the intersection of Edenrose Street and White Clover Way.

Staff at Edenrose PS should be congratulated for their efforts in maintaining order on the school property and entry traffic to school driveway.

Recommendation:

1. That Parking Enforcement be requested to conduct a multi day parking enforcement blitz to enforce parking infractions along Edenrose Street in the vicinity of Edenrose Public School, 1342 Edenrose Street, between the hours of 3:10 p.m. and 3:35 p.m.
2. That the Peel Regional Police be requested to enforce traffic infractions along Edenrose Street in the vicinity of Edenrose Public School between the hours of 3:10 p.m. and 3:35 p.m.
3. That Traffic Safety Council acknowledge the Principal, Vice- Principal and staff at Edenrose Public School for their efforts which have resulted in the dramatic improvement in the dismissal procedures at Edenrose Public School.

Laura Wilson

Subject: FW: St. Francis of Assisi Dismissal Report

From: Boris Swedak
Sent: 2012/09/13 1:02 PM
To: Laura Wilson
Subject: Fw: St. Francis of Assisi Dismissal Report

St. Francis of Assisi Dismissal Report

Address 2480 Thorn Lodge Drive

Ph. [905] 822 -3183

Zone Z- 18

School ID # 113

Grades - JK – 8

Dismissal time 3:00 PM

Weather Sunny, 27 degrees. C

Date of Inspection September 12th. 2012

Adjacent to Park- Yes

Public Transit – Yes, but does not impact Dismissal Period

School Transport- 1 cube van, 5 full size buses

Signage--In place and adequate on both the school property & on City right of way

Kissn' Ride—Yes, a one way layout with exclusive bus lane adjacent to curb.
Storage of automobiles in afternoon not practical due to limited length of drive
and the congestion that the 5 buses cause.

Parking-- School lot located at east side of property consisting of 2 long rows of parking,
on
the south side of Thorn Lodge, auxiliary facility available on the north side of Thorn Lodge
in the St. Francis of Assisi Church,

13c

Parental Behavior-Good.

Comments:

Spoke to Principal Steve Palmateer regarding Dismissal Period & he requested a review of the Fire Route Signs in the school driveway

Lots of walkers observed during this inspection

No conflicts noted this afternoon

Staff assist with Dismissal procedure and loading of buses

This is an older school site located totally within a residential setting and all traffic is basically school related..

Dismissal works well at St. Francis of Assisi with parents using not only south side of Thorne Lodge to park but the St. Francis of Assisi Church parking lot opposite the school. All parents cross the road with their children hand in hand ,no safety issues in using this lot.

There is a City of Mississauga Pool parking lot at the rear of the school which serves as an overflow parking facility should the need arise.

Recommendations:

1. That Parking Control Officer visit this site during Dismissal period [2:50- 3:10 PM] to enforce the posted signs on Thorn Lodge Drive.
2. That Dale Lucas review the signage posted in the St. Francis of Assisi School driveway as requested by school Principal

Boris Swedak
Traffic Safety Council
Citizen Member
Ward 3

Laura Wilson

From: Boris Swedak [REDACTED]
Sent: 2012/09/18 1:43 PM
To: Laura Wilson
Subject: Fw: Edenrose PS Dismissal Report

Dismissal Report

School Name-Edenrose PS Dismissal Report

Address- 1342 Edenrose St.

Phone No. [905] 567-4296 Z # 30

ID # 140

Grades- K-6 Dismissal Time-3:25 PM

Date of Inspection - Monday, September 17th. 2012

Weather- Sun/ Cloud mix 24 deg. C

Adjacent to Park- Yes

Public Transit- No

School Transport- 3 cube Vans, 3 full size bus

Parent Behavior—Acceptable

Parking- Main parking lot is on South/ East side of the property and consists of 4 long rows of parking; Parking lot has a swing gate to close lot off to parents during morning and afternoon periods : parking on the east side of Edenrose St. where permitted

Kissn' Ride- Yes, our standard 3 lane one way standard with bus storage adjacent to curb.

Signs- In place & more than adequate on City right of way & school grounds, but ignored by a few parents.

Comments:

No left turn signs have been recently been installed at the entrance of the school & offer improvement to vehicular moment at this site

There is still a unusually high number of parents driving to school to pick up their children causing traffic congestion on Edenrose St..

This school is located within walking distance for most of enrolment except for the bused population.

At 3: 10 PM. Parents have filled every legal parking spot on the school grounds and on Edenrose St.... right of way in proximity of the school site.

Lots of walkers

No actual vehicular conflicts observed this inspection

A number of vested school staff monitored on site student traffic along with bus loading, staff at Edenrose PS should be congratulated for their efforts in maintaining order on the school property & entry traffic to school driveway.

Crossing Guard in place at the intersection of Edenrose/White Clover Way

Recommendations:

1. That Parking Control Officer pay random visits to this school site during Dismissal Period [3:10- 3:35 PM] to enforce the No Parking/No Stopping signs in place on Edenrose St.
2. That Peel Police be requested to randomly visit Edenrose PS during Dismissal Period [3:10- 3:30 PM] to ticket the motorists making illegal U-turns
3. That the Principal, Vice Principal & Staff at Edenrose PS be acknowledged by T.S.C. for their personal efforts in dramatically improving the Dismissal Procedure at Edenrose PS

Boris Swedak



July 24, 2012

Traffic Safety Committee

SEP 26 2012

To: Traffic Safety Council

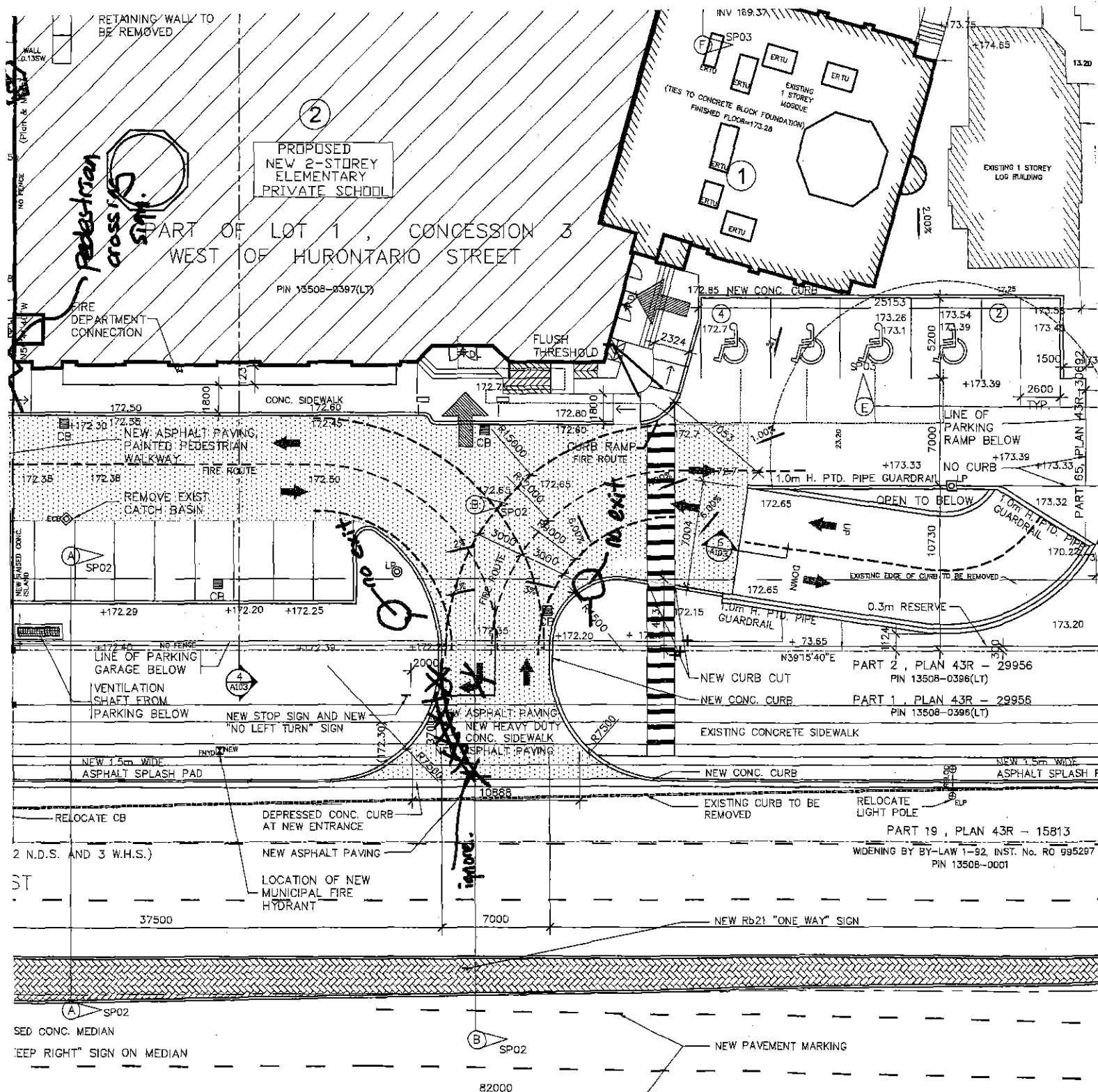
Re: Site Plan SP 09/074 – 935 Eglinton Avenue West (Ward 6)

On July 24, 2012, the Site Plan Review Subcommittee of Traffic Safety Council reviewed the site plan noted above and would make the following recommendation:

That the Commissioner of Planning and Building be advised that with respect to the Revised Site Plan SP 09/ 074 - Proposed Private School at 935 Eglinton Avenue West, Ward 6, the Site Plan Review Subcommittee of Traffic Safety Council, reviewed the revised site plan submitted on July 9, 2012, and would recommend the following:

1. That modifications be made to the School Zone Safety (Kiss and Ride) Drop-Off lane area to 'smooth out' the lane as set out in the site plan and include the installation of a Stop Sign at the painted stop bar at the end of the lane.
2. That a Pedestrian Crossing Sign be installed at the front driveway for the pedestrian crossing as indicated on the site plan.
3. That the easterly driveway be restricted to ingress only and that No Exit signs be installed on both sides of the driveway.

David Brown, David Raakman, Peter Westbrook
Site Plan Review Subcommittee of
Traffic Safety Council



14c

MOULIN ROUGE CRESCENT

(BY REGISTERED PLAN 43M-1034)
PIN 13508-0083

EDGE OF PAVEMENT
CENTRE LINE OF DRIVEWAY
EDGE OF PAVEMENT

LOT 61
PIN 13508-0082(LT)

BLOCK 126
(0.30 RESERVE)
(REG'D PLAN 43M-1034)
PIN 13508-0006(LT)

GUARD RAIL

NEW 1900mm HIGH SOLID WOOD FENCE (1)
ON TOP OF EXIST. RETAINING WALL

LINE OF PARKING
GARAGE BELOW

EXISTING CONC. RETAINING WALL
TO BE REMOVED

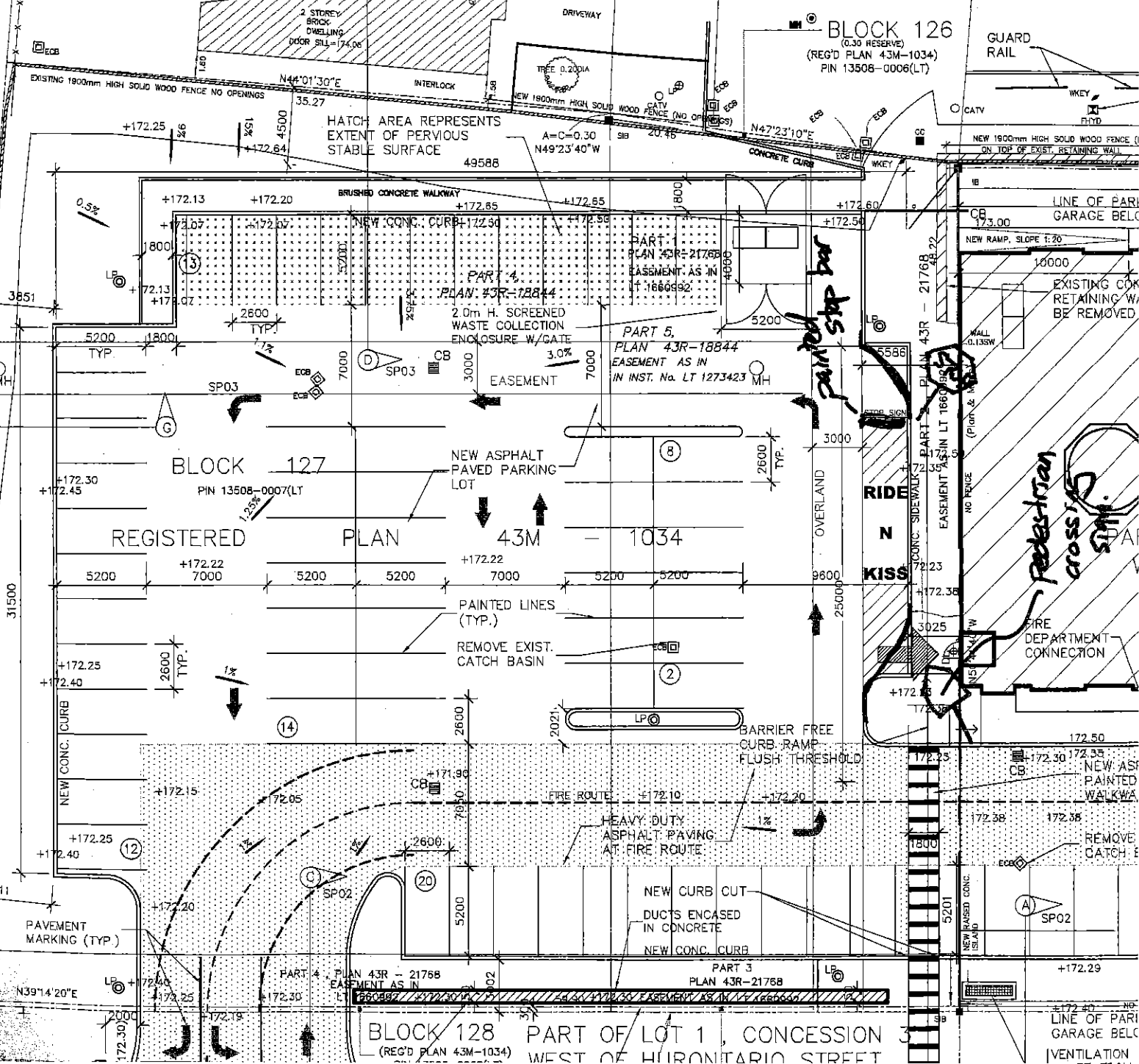
pedestrian crossing

RIDE
N
KISS

FIRE DEPARTMENT CONNECTION

REMOVE CATCH BASIN

LINE OF PARKING
GARAGE BELOW
VENTILATION



BLOCK 128 PART OF LOT 1, CONCESSION 3
(REG'D PLAN 43M-1034)
WEST OF HIRONITARIO STREET

Laura Wilson

From: John Dunn
Sent: 2012/06/27 10:19 PM
To: Katie Mahoney
Cc: Laura Wilson
Subject: Traffic Safety Committee

Traffic Safety Committee

SEP 26 2012

Dear Katie;

Thank you very much for the opportunity to work on your Traffic Safety Committee for the city of Mississauga. Upon further investigation, this is a committee I should have been involved in 20 years ago. I believe this best fits a person who currently has children involved in the school system. Therefore, I am withdrawing my name from the committee.

Thank you again.

Regards,
John

Laura Wilson

From: Nancy Fryers
Sent: 2012/07/19 4:43 PM
To: Laura Wilson
Subject: Resignation from TSC

Traffic Safety Committee

SEP 26 2012

Laura: This email is to advise you that effective September 1st, 2012, I will be resigning my position as Ward 8 representative to the Traffic Safety Council. Nancy and I have sold our home, and will be moving to Vineland, Ontario. I have notified Councillor Mahoney's office of my resignation. Thank you for your help and support during your time with the TSC. Best wishes you to. Regards, Doug Fryers

Laura Wilson

From: Yasmeen Ashraf
Sent: 2012/08/18 3:44 PM
To: Sue McFadden
Cc: Laura Wilson
Subject: Resignation from the Traffic Safety Council.

Traffic Safety Committee

SEP 26 2012

Sue McFadden
Councillor Ward 10.
City of Mississauga
300 City Centre Drive
Mississauga On. L5B 3C1.

August 18, 2011.

Dear Councillor,

I regret to inform that I am tendering my resignation, as a citizen member from the Traffic Safety Council. With the additional responsibilities assigned to me at my regular work place, I will not be able to do justice to my role as a member of the committee.

I am grateful to you and the members of the committee for their kind support at all times.

Thanking you,

Your sincerely,
Yasmeen Ashraf Irshaduddin.

Traffic Safety Committee

SEP 26 2012

Memorandum

TO: Chair and Members of Traffic Safety Council

FROM: Sheena Rodda, Manager of Parking Enforcement

DATE: July 5, 2012

SUBJECT: **Parking Enforcement in School Zones**
Month of June

During the month of June 2012 Parking Enforcement staff carried out enforcement in school zones with the following results:

Total number of schools patrolled:	45
Total number of patrols:	98
Total number of infraction notices issued:	129

The attached report indicates the schools patrolled for the month of June.



Sheena Rodda
Manager, Parking Enforcement

:had
encl.

School Patrols - June 2012

School	Complainant	Date Patrolled	AM	PM	Tickets Issued
ALL SAINTS SCHOOL 4105 COLONIAL DRIVE	TS COUNCIL	1-Jun-12	0	1	1
BARONDALE PS 200 BARONDALE DRIVE	TS COUNCIL	1-Jun-12	0 0 0	1 1 1	3 0 0
BLESSED JOHN XXII 915 MCBRIDE AVENUE	TS COUNCIL	7-Jun-12	0	1	0
BRISTOL ROAD MIDDLE SCHOOL 210 BRISTOL ROAD EAST	TS COUNCIL	14-Jun-12	0	1	0
BRITANNIA PS 1145 SWINEBOURN DRIVE	TS COUNCIL	4-Jun-12 8-Jun-12 18-Jun-12 19-Jun-12 20-Jun-12 22-Jun-12 28-Jun-12	0 1 0 1 1 0 0	1 0 1 0 0 1 1	3 1 1 2 1 3 5
CANADIAN MARTYRS SCHOOL 1185 MISSISSAUGA VALLY BLVD	TS COUNCIL	7-Jun-12	0	1	0
CREDIT VALLEY SCHOOL 2365 CREDIT VALLEY ROAD	TS COUNCIL	7-Jun-12	0	1	1
CASHMERE AVENUE P.S 2455 CASHMERE AVENUE	TS COUNCIL	4-Jun-12	0	1	1
CEREMONIAL P.S 895 CEREMONIAL DRIVE	TS COUNCIL	28-Jun-12	1	0	1
CORSAIR P.S 2230 CORSAIR ROAD	TS COUNCIL	5-Jun-12	0	1	5
DIVINE MERCY 2840 DUNCARIN DRIVE	TS COUNCIL	20-Jun-12	1	0	7

DUNRANKIN P.S	TS COUNCIL	11-Jun-11	0	1	0
3700 DUNRANKIN DRIVE		12-Jun-12	0	1	3
		13-Jun-12	0	1	0
EDENROSE P.S	TS COUNCIL	7-Jun-12	0	1	1
1342 EDENROSE P.S		25-Jun-12	0	1	1
FAIRVIEW PS	TS COUNCIL	14-Jun-12	0	1	4
3590 JOAN DRIVE		15-Jun-12	0	1	0
			0	1	0
FOREST GLEN	TS COUNCIL	4-Jun-12	0	1	3
3400 PONY TRAIL		6-Jun-12	0	1	0
GARTHWOOD PARK	TS COUNCIL	1-Jun-12	0	1	1
3245 COLONIAL DRIVE					
KINDREE P.S	TS COUNCIL	04-Jun-12	1	0	2
7370 TERRAGAR BLVD					
MAPLEWOOD P.S	TS COUNCIL	19-Jun-12	1	0	4
2650 GANANOQUE DRIVE					
MARY FIX CATHOLIC SCHOOL	TS COUNCIL	19-Jun-12	0	1	1
467 PAISLEY BLVD W		20-Jun-12	0	1	0
		21-Jun-12	0	1	1
MENTOR COLLEGE	TS COUNCIL	4-Jun-12	0	1	0
40 FOREST AVENUE		11-Jun-12	0	1	3
		12-Jun-12	0	1	0
			0	1	0
MIDDLEBURY PUBLIC SCHOOL	TS COUNCIL	21-Jun-12	0	1	1
5482 MIDDLEBURY DRIVE					
MISSISSAUGA VALLEY	TS COUNCIL	7-Jun-12	0	1	2
1185 MISSISSAUGA VALLEY BLVD					
NAHANI WAY	TS COUNCIL	4-Jun-12	0	1	0
235 NAHANI WAY		5-Jun-12	0	1	0
			0	1	0
		7-Jun-12	0	1	1
OLIVE GROVE SCHOOL	TS COUNCIL	7-Jun-12	0	1	2
2300 SPEAKMAN DRIVE					

OSCAR PETERSON P.S 5120 PERENNIAL DRIVE	TS COUNCIL	8-Jun-12	0	1	3
PLUM TREE P.S 6855 TENTH LINE W.	TS COUNCIL	4-Jun-12	1	0	1
		8-Jun-12	1	0	1
PORT CREDIT S.S. 70 MINEOLA ROAD EAST	TS COUNCIL	12-Jun-12	0	1	0
		13-Jun-12	0	1	0
ROTHERGLEN SCHOOL 929 OLD DERRY ROAD	TS COUNCIL	08-Jun-12	0	1	3
		12-Jun-12	0	1	0
		13-Jun-12	0	1	4
		14-Jun-12	0	1	9
		18-Jun-12	1	0	0
		19-Jun-12	0	1	2
		20-Jun-12	0	1	0
SAN LORENZO RUIZ P.S 120 BARNDALE DRIVE	TS COUNCIL	20-Jun-12	0	1	1
ST. ALBERT 3255 HAVENWOOD	TS COUNCIL	1-Jun-12	0	1	0
		4-Jun-12	1	0	1
ST ALBERT OF JERSUELEM 3345 ESCADA DRIVE	TS COUNCIL	8-Jun-12	0	1	3
		15-Jun-12	0	1	0
			0	1	0
ST. EDITH STEIN 6234 OSPREY	TS COUNCIL	8-Jun-12	0	1	3
ST. GERARD CATHOLIC SCHOOL 1300 MCBRIDE AVENUE	TS COUNCIL	4-Jun-12	0	1	0
			0	1	0
		5-Jun-12	0	1	0
		6-Jun-12	0	1	0
		7-Jun-12	0	1	0
ST. MARCELLINUS S.S 730 COURTNEY PARK DRIVE	TS COUNCIL	22-Jun-12	0	1	8
ST PETER AND PAUL 4205 WOODINGTON DRIVE	TS COUNCIL	14-Jun-12	1	0	1
			0	1	0
		15-Jun-12	0	1	0
			0	1	0
			0	1	0

ST RAYMOND SCHOOL 5735 WHITEHORN AVENUE	TS COUNCIL	4-Jun-12	0	1	2
			1	1	2
		5-Jun-12	0	1	0
		6-Jun-12	0	1	0
ST SIMON STOCK 6440 LISGAR DRIVE	TS COUNCIL	18-Jun-12	0	1	0
			0	1	0
ST. TERESA OF AVILA 6675 MONTEVIDEO ROAD	TS COUNCIL	8-Jun-12	0	1	1
		20-Jun-12	0	1	1
		21-Jun-12	0	1	10
ST THERESA OF THE CHILD JESUS E.F.C 6930 FOREST PARK DRIVE	TS COUNCIL	5-Jun-12	0	1	2
ST. THOMAS 2640 THOMAS STREET	TS COUNCIL	22-Jun-12	1	0	1
VISTA HIGHTS 89 VISTA BOULEVARD	TS COUNCIL	27-Jun-12	1	0	1
			1	0	0
WHITEHORN P.S 5735 WHITEHORN AVENUE	TS COUNCIL	04-Jun-12	1	0	1
			0	1	0
WHITEOAKS P. S 1690 MAZO CRES	TS COUNCIL	12-Jun-12	1	0	0
		13-Jun-12	1	0	0

Laura Wilson

From: Carmela Radice
Sent: 2012/09/14 11:56 AM
To: [REDACTED]
Cc: Laura Wilson
Subject: Council - September 12, 2012
Attachments: Petition - Crossing Guard.pdf

Traffic Safety Committee

SEP 26 2012

Good morning,

Re: Crossing Guard request at Winfield Terrace and Westbourne Terrace

This is to advise that Mississauga Council on September 12, 2012 received your petition requesting a crossing guard at the location of Winfield Terrace and Westbourne Terrace.

Your petition has been received and referred to Traffic Safety Council for a site inspection.

A by copy of this email to Laura Wilson, Legislative Coordinator for Traffic Safety Council

Yours truly,

Carmela Radice
Legislative Coordinator
The City of Mississauga
Legislative Services, Office of the City Clerk
905-615-3200 ext. 5426

Visit the Office of the Clerk's page on the City of Mississauga's website to access agendas, minutes, the Council and Committees calendar, and much more!
<http://www.mississauga.ca/portal/cityhall/officeofthecityclerk>.

2000

266576

July 22 2000

— 10 —

02846 DERIVED

COUNCIL AGENDA

SEP 12 2012

SEP 12	
POOJA BUDHIRAJA	Ky's
NAOKO OIKAWA	Jada
DESIREE MANUK	Desiree Manuk
Jagat Singh	Jagan Rn
Smita Jain	Smita
MARIA CABRAL	Maia Cabral
SEEMA MEHTA	Smeeta
Ranjana Shastri	In
Jean Lee	Jeff Rybal
ASIE IQBAL	Idung
Fadima Mohsin	Mina
AFSHA ATCHA	At
Shirley	Maria Kalm
Housumi Kundu	Shubh
Bhupinder Raur	Chh
Jameen Narara	RD
Rupinder Singh	Trish
NIDHI BATRA	Pras
Grace Diniz	Sudairi Purosh
Shahar Purosh	Pouya
Fachal Dsouza	
Sanya Khan	

SEP 26 2012

City Committees of Council Structure Review

The purpose of this project is to review the administration, mandate and structure of existing (and potential) City of Mississauga Committees of Council, and to make specific recommendations regarding these committees for Council approval.

The analysis will critically assess whether the committees operate effectively and efficiently while meeting the needs of City Council, citizens and the corporation.

In particular, the review will include:

- the purpose of each committee and how effectively it meets that purpose and whether it aligns with the City's Strategic Plan and corporate values
- the membership of the committee
- the citizen engagement opportunities within each committee
- the administration of the committee including time commitment, the decision-making framework, work processes, staff role, products and budgets
- the history of the committee, including significant revisions over time
- the mechanisms and opportunities to delegate authority

The research and analysis phase will be completed by November, 2012. The entire review will be completed by February, 2013 when the recommendations are formally approved by Council.

The Steering Committee members for this review include:

- Crystal Greer, Director of Legislative Services and City Clerk
- Gary Kent, Director of City Strategy and Innovations
- Mary Ellen Bench, City Solicitor

The Project Lead for this review is Karen Spencer, Advisor, City Manager's Office. Please contact Karen for further information at karen.spencer@mississauga.ca or at (905) 615-3200 x5766.

Committees to be reviewed in this project:

- Accessibility Advisory Committee
- Advertising Review Panel
- Audit Committee
- Budget Committee*
- Citizen Appointments
- Committee of Revision
- Council*
- Election Campaign Finances Committee
- Environmental Advisory Committee
- General Committee*
- Governance Committee
- Heritage Advisory Committee
- Incidents in City Facilities Appeal Committee
- Mississauga Celebration Square Events Committee
- Mississauga Appeal Tribunal
- Mississauga Cycling Advisory Committee
- Museums of Mississauga Advisory Committee
- Planning and Development Committee*
- Property Standards Committee
- Public Vehicle Advisory Committee
- Road Safety Mississauga Advisory Committee
- Traffic Safety Council
- Towing Industry Advisory Committee

(Total 23 committees)

* Governance Committee on May 14th 2012 gave direction that the governance structure for Council, General Committee, Planning and Development Committee and Budget Committee will remain as 'Committees of the Whole'.