



AGENDA

TRAFFIC SAFETY COUNCIL

THE CORPORATION OF THE CITY OF MISSISSAUGA
WEDNESDAY, OCTOBER 24, 2012 – 5:00 P.M.

COMMITTEE ROOM 'A', SECOND FLOOR
300 CITY CENTRE DRIVE, MISSISSAUGA, ONTARIO L5B 3C1
MISSISSAUGA, ONTARIO
www.mississauga.ca

Members

Councillor Frank Dale, Ward 4
Councillor Sue McFadden, Ward 10
Meredith Johnson (Trustee Ward 9 & 10 - Peel District School Board)
Anna Abbruscato (Trustee Ward 4 -Dufferin-Peel Catholic School Board)
Deborah Goss (Citizen Member Ward 1)
Peter Westbrook (Citizen Member Ward 2)
Boris Swedak (Citizen Member Ward 3)
Edgar Lethbridge (Citizen Member Ward 4)
Louise Goegan (Citizen Member Ward 5)
David Brown (Citizen Member Ward 6) **(CHAIR)**
Daniel Suess (Citizen Member Ward 7)
Heather Relf (Citizen Member Ward 9)
David Raakman (Citizen Member Ward 10) **(VICE-CHAIR)**
Bill McBain (Citizen Member Ward 11)

City-Wide Members

Shakil Akhter (Citizen Member Ward 10 North Zone)

Advisory Board

Andy Bate, Supervisor, Traffic Operations
Denna Yaunan, Traffic Operations Technician
Sheelagh Duffin, Supervisor, Crossing Guards
Parking Enforcement Officer
Sgt. K. Warren, Peel Regional Police
Gale Solomon-Henry, Principals'/Vice-Principals' Association Peel District School Board
Natalie Poerba & Marilyn Hayhow, Principals'/Vice-Principals' Association Dufferin-Peel
Catholic School Board
Anna Gentile & Marcy Macina, Student Transportation

Contact: Laura Wilson, Legislative Coordinator
Office of the Clerk 905-615-3200 ext. 5425 Fax 905-615-4181
laura.wilson@mississauga.ca

INDEX – TRAFFIC SAFETY COUNCIL, OCTOBER 24, 2012

CALL TO ORDER

DECLARATIONS OF DIRECT (OR INDIRECT) PECUNIARY INTEREST

PRESENTATIONS / DEPUTATIONS

MATTERS TO BE CONSIDERED

1. Approval of Minutes of previous meeting
2. Site Inspection Report – Huntington Ridge Public School and St. Matthew Catholic School, Ward 4
3. Inspection Request – St. Timothy Catholic School, Ward 7
4. Site Inspection Report - St. Joseph Catholic School, Ward 11
5. Site Inspection Report – Loyola Catholic Secondary School, Ward 8
6. Site Inspection Report – Fallingbrook Middle School and Rick Hansen Senior Public School, Ward 6
7. Site Inspection Report – St. Francis of Assisi Catholic School and Sheridan Park Public School, Ward 2
8. Site Inspection Request – St. Bernard of Clairvaux Catholic School, Ward 10
9. Sign Removal Request – Riverside Public School, Ward 1
10. Dismissal Report – September and October 2012
11. Email dated September 26, 2012 from Anna Gentile, Student Transportation of Peel Region (STOPR)
12. Email dated October 10, 2012, from Paul Bordin, City of Mississauga Resident
13. Email dated October 18, 2012 from Lynn Seville, City of Mississauga Resident,

INDEX CONTINUED – TRAFFIC SAFETY COUNCIL, SEPTEMBER 26, 2012

14. Parking Enforcement in School Zones – September 2012

Date of Next Meeting – November 28, 2012

OTHER BUSINESS

ADJOURNMENT

CALL TO ORDERDECLARATIONS OF DIRECT (OR INDIRECT) PECUNIARY INTERESTPRESENTATIONS / DEPUTATIONSMATTERS TO BE CONSIDERED1. Approval of Minutes of previous meeting

Minutes of the Traffic Safety Council meeting held on September 26, 2012.

RECOMMEND APPROVAL2. Site Inspection Report – Huntington Ridge Public School and St. Matthew Catholic School, Ward 4

Site Inspection Report for the inspection conducted on September 27, 2012, to review the warrants for placing a Crossing Guard at the intersection of Winfield Terrace and Westbourne Terrace for students attending Huntington Ridge Public School, 345 Huntington Ridge Drive and St. Matthew Catholic School, 280 Kingsbridge Garden Circle.

RECOMMENDATION

1. That the request for a Crossing Guard at the intersection of Winfield Terrace and Westbourne Terrace for students attending Huntington Ridge Public School, 345 Huntington Ridge Drive and St. Matthew Catholic School, 280 Kingsbridge Garden Circle, be denied as the warrants have not been met.
2. That the Transportation and Works Department be requested to review the No Stopping signage in the vicinity of the intersection of Winfield Terrace and Westbourne Terrace for students attending Huntington Ridge Public School and St. Matthew Catholic School .
3. That once the appropriate signage is in place, Parking Enforcement be requested to enforce parking infractions in the vicinity of the intersection of Winfield Terrace and Westbourne Terrace for students attending Huntington Ridge Public School and St. Matthew Catholic School between 8:40 a.m. and 9:00 a.m. and 3:20 p.m. and 3:45 p.m.

RECOMMEND APPROVAL

3. Site Inspection Report – St. Timothy Catholic School, Ward 7

Site Inspection Report for the inspection conducted on October 4, 2012, to review the warrants for placing a Crossing Guard at the intersection of Cherry Post Drive and Camilla Road for students attending St. Timothy Catholic School, 2214 Cliff Road.

RECOMMENDATION

That the request for a Crossing Guard at the intersection of Cherry Post Drive and Camilla Road for students attending St. Timothy Catholic School, 2214 Cliff Road, be denied as the warrants have not been met and the All Way Stop provides protection for crossing students.

RECOMMEND APPROVAL

4. Site Inspection Report - St. Joseph Catholic School, Ward 11

Site Inspection Report for the inspection conducted on October 2, 2012, to review the warrants for placing a Crossing Guard at the intersection of Church Street and Old Pine Street for students attending St. Joseph Catholic School, 249 Church Street.

RECOMMENDATION

1. That the request for a Crossing Guard at the intersection of Church Street and Old Pine Street for students attending St. Joseph Catholic Elementary School, 249 Church Street be denied as the warrants have not been met.
2. That the Transportation and Works Department be requested to review the signage along Church Street in the vicinity of St. Joseph Catholic Elementary School.
3. That once the appropriate signage is in place, Parking Enforcement be requested to enforce parking infractions along Church Street in the vicinity of St. Joseph Catholic Elementary School between 8:20 a.m. and 8:50 a.m. and between 3:10 p.m. and 3:30 p.m.

RECOMMEND APPROVAL

5. Site Inspection Report – Loyola Catholic Secondary School, Ward 8

Site Inspection Report for the inspection conducted on October 11, 2012 to review pedestrian safety along Sladeview Crescent, in front of Loyola Catholic Secondary School, 4010 Sladeview Crescent.

RECOMMENDATION

1. That the Transportation and Works Department, Traffic Operations Division, be requested to do the following for students attending Loyola Catholic Secondary School, 4010 Sladeview Crescent:
 - a. Review the feasibility of installing a traffic control signal at the intersection of Ridgeway Drive and Sladeview Crescent/ Drummond Road.
 - b. Review the signage along Sladeview Crescent in front of Loyola Catholic Secondary School.
2. That the Transportation and Works Department, Transit Division be requested to do the following for students attending Loyola Catholic Secondary School:
 - a. Provide the Traffic Safety Council Legislative Coordinator with information pertaining to the number of busses that are scheduled to service the 2:15 p.m. dismissal time at Loyola Catholic Secondary School on Sladeview Crescent.
 - b. Review the feasibility of installing transit shelters at the bus stop on the north side of Sladeview Crescent opposite from the school.
3. That the Dufferin- Peel Catholic District School Board be requested to review the feasibility of installing a vinyl clad, chain link fence along the school property line on the north side of Burnhamthorpe Road to discourage vehicles from dropping students off on Burnhamthorpe Road.

RECOMMEND APPROVAL

6. Site Inspection Report – Fallingbrook Middle School and Rick Hansen Senior Public School, Ward 6

Site Inspection Report for the inspection conducted on October 16, 2012 to review pedestrian safety at the intersection of Bristol Road and Kinglet Avenue/ Lismic Boulevard for students attending Fallingbrook Middle School, 5187 Fallingbrook Drive and Rick Hansen Secondary School, 1150 Dream Crest Road.

RECOMMENDATION

1. That the request for a Crossing Guard at the intersection of Bristol Road and Kinglet Avenue/ Lismic Boulevard for students attending Fallingbrook Middle School, 5187 Fallingbrook Drive and Rick Hansen Secondary School, 1150 Dream Crest Road, be denied as students crossing at this intersection are in grades six (6) to twelve (12) and the Traffic Safety in School Zones Corporate policy allows Traffic Safety Council to recommend the placement of Crossing Guards for students in kindergarten to grade five (5).
2. That the Principals of Fallingbrook Middle School and Rick Hansen Secondary School be requested to direct students to cross Bristol Road on the west side of the intersection in the morning, to avoid most of the turning traffic onto and from Lismic Boulevard.
3. That the Transportation and Works Department be requested to review the feasibility of installing a traffic control signal at the intersection of Bristol Road and Kinglet Avenue/ Lismic Boulevard.
4. That the Site Inspection Subcommittee of Traffic Safety Council be requested to re-inspect the intersection of Bristol Road and Kinglet Avenue/ Lismic Boulevard to review pedestrian safety once Bristol Road is reconfigured from four (4) lanes, a centre turn lane and bike lanes to a narrower four (4) lane road with no centre lane and wider bike lanes.

RECOMMEND APPROVAL

7. Site Inspection Report – St. Francis of Assisi Catholic School and Sheridan Park Public School, Ward 2

Site Inspection Report for the inspection conducted on October 17, 2012 to review the warrants for placing a Crossing Guard at the intersection of Sheridan Park Drive and Homelands Drive for students attending St. Francis of Assisi Catholic School, 2480 Thorn Lodge Drive and Sheridan Park Public School, 2280 Perran Drive.

RECOMMENDATION

That the request for a Crossing Guard at the intersection of Sheridan Park Drive and Homelands Drive for students attending St. Francis of Assisi Catholic School, 2480 Thorn Lodge Drive and Sheridan Park Drive, 2280 Perran Drive be denied as the warrants have not been met and the All Way Stop provides protection for students crossing.

RECOMMEND APPROVAL

8. Site Inspection Request – St. Bernard of Clairvaux Catholic School, Ward 10

Email dated October 1, 2012 from Carolyn Fujiwara, Vice- Principal, St. Bernard of Clairvaux Catholic School, requesting site inspections to review the warrants for placing Crossing Guards at the intersections of Tenth Line and Tacc Drive, Escada Drive and Tenth Line, Escada Drive and Churchill Meadows Boulevard and at the school exit onto Escada Drive; and the email dated October 3, 2012 from Mark Azzarello, City of Mississauga resident, requesting a site inspection to review the warrants for placing a Crossing Guard at the intersection of Escada Drive and Tenth Line West.

RECOMMENDATION

1. That the email dated October 1, 2012 from Carolyn Fujiwara, Vice-Principal, St. Bernard of Clairvaux Catholic School, requesting site inspections to review the warrants for placing Crossing Guards at the intersections of Tenth Line West and Tacc Drive, Escada Drive and Tenth Line West, Escada Drive and Churchill Meadows Boulevard and at the school exit onto Escada Drive be received.
2. That the email dated October 3, 2012 from Mark Azzerello, City of Mississauga resident, requesting a site inspection to review the warrants for placing a Crossing Guard at the intersection of Escada Drive and Tenth Line West be received.
3. That the site inspection subcommittee of Traffic Safety Council be requested to conduct site inspections to review the warrants for placing Crossing Guard at the intersections of Tenth Line West and Tacc Drive, Escada Drive and Tenth Line West, Escada Drive and Churchill Meadows Boulevard and at the school exit onto Escada Drive.

RECOMMEND APPROVAL

9. Sign Removal Request – Riverside Public School, Ward 1

Email dated October 3, 2012 from Andy Bate, Supervisor, Traffic Operations, requesting that the Site Inspection subcommittee of Traffic Safety Council conduct a site inspection to review the feasibility of removing parking signs posted on John Street in front of Riverside Public School, 30 John Street North.

DIRECTION REQUIRED

10. Dismissal Report – September and October 2012RECOMMENDATION

That the Dismissal Report for the month of September and October 2012 be received.

RECOMMEND RECEIPT

The following recommendations emanated from the Dismissal Report for the month of September and October 2012:

September 28, 2012St. Teresa of Avila, Ward 9Recommendation

That Parking Enforcement be requested to enforce parking infractions along Montevideo Road in the vicinity of St. Teresa of Avila Catholic School, 6675 Montevideo Road, between 2:50 p.m. and 3:10 p.m.

RECOMMEND APPROVALOctober 1, 2012St. Joan of Arc Catholic Secondary School, Ward 10Recommendation:

That Parking Enforcement be requested to enforce parking infractions along Thomas Street and Churchill Meadows Boulevard in the vicinity of St. Joan of Arc Catholic Secondary School, 3801 Thomas Street, between 2:15 p.m. and 2:40 p.m.

RECOMMEND APPROVALOctober 2, 2012St. David of Wales Catholic School, Ward 6Recommendation:

1. That Parking Enforcement be requested to enforce parking infractions on Beacon Lane and Rathburn Road, in the vicinity of St. David of Wales Catholic School, 4200 Beacon Lane, between 3:00 p.m. and 3:20 p.m.
2. That the Dufferin- Peel Catholic District School Board be requested to review the feasibility of installing oversized School Traffic Only signs at St. David of Wales Catholic School, on each side of the driveway entrance on Beacon Lane.

RECOMMEND APPROVAL

October 3, 2012**Dolphin Senior Public School, Ward 11****Recommendation:**

1. That the Peel District School Board and Representatives from Traffic Safety Council be requested to review the configuration of the parking lot and driveway at Dolphin Senior Public School, 18 Brookside Drive, at the next Peel Board Maintenance Meeting on October 23, 2012.
2. That the Transportation and Works Department review the signage at the intersection of Brookside Drive and Britannia Road.

RECOMMEND APPROVAL**October 5, 2012****Canadian Martyrs Catholic School, Ward 4****Recommendation:**

1. That the Dufferin- Peel Catholic District School Board be requested to review the feasibility of doing the following at Canadian Martyrs Catholic School, 1185 Mississauga Valley Boulevard:
 - a. Repaint the pavement markings on the parking lot and School Zone Safety (Kiss and Ride).
 - b. Re-configure the School Zone Safety (Kiss and Ride) to a three (3) lane layout with two lanes to be used as a storage lanes and one lane to be used as a through lane during the Dismissal Period.
2. That Parking Enforcement be requested to enforce parking infractions along Mississauga Valley Boulevard in the vicinity of Canadian Martyrs Catholic School between 2:50 p.m. and 3:15 p.m.

RECOMMEND APPROVAL**October 9, 2012****Erin Mills Senior Public School, Ward 8****Recommendation:**

That the Peel District School Board and Representatives from Traffic Safety Council be requested to consider the driveway layout at Erin Mills Senior Public School, 3546 South Common Court at the next Peel Board Maintenance Meeting, to review the feasibility of accommodating bus loading and unloading on school property.

RECOMMEND APPROVAL

October 15, 2012

Marvin Heights Public School, Ward 5

Recommendation:

That Parking Enforcement be requested to enforce parking infractions along Redstone Road, in the vicinity of Marvin Heights Public School, 7455 Redstone Road, between 3:20 p.m. and 3:45 p.m.

RECOMMEND APPROVAL

11. Email dated September 26, 2012 from Anna Gentile, Student Transportation of Peel Region (STOPR), Ward 9

Email dated September 26, 2012 from Anna Gentile, Student Transportation of Peel Region (STOPR) with respect to Traffic Safety Council recommendation TSC-0131-2012, which requested that STOPR review the school bus stop on Gulf Stream Way, for students attending Shelter Bay Public School and report back to Traffic Safety Council.

RECOMMENDATION

That the email dated September 26, 2012 from Anna Gentile, Student Transportation of Peel Region (STOPR) with respect to Traffic Safety Council recommendation TSC-0131-2012, which requested that STOPR review the school bus stop on Gulf Stream Way, for students attending Shelter Bay Public School and report back to Traffic Safety Council be received.

RECOMMEND RECEIPT

12. Email dated October 10, 2012, from Paul Bordin, City of Mississauga Resident, Ward 3

Email dated October 10, 2012 from Paul Bordin, City of Mississauga resident, expressing concern with respect to the removal of the Crossing Guard from Rathburn Road and Willowbank Trail.

DIRECTION REQUIRED

13. Email dated October 18, 2012 from Lynn Seville, City of Mississauga Resident, Ward 3

Email dated October 18, 2012 from Lynne Seville, City of Mississauga resident and Chair of the St. Vincent de Paul Catholic School Student Council, expressing concern with respect to the removal of the Crossing Guard from Rathburn Road and Willowbank Trail and requesting that a representative be present at the St. Vincent de Paul Student Council meeting on November 6, 2012 to address the concerns of residents.

DIRECTION REQUIRED

14. Parking Enforcement in School Zones – September 2012

Memorandum from Tony Stasi, Manager, Parking Enforcement reporting on parking enforcement in school zones for the month of September 2012.

RECOMMENDATION

That the memorandum from Tony Stasi, Acting Manager, Parking Enforcement, reporting on parking enforcement in school zones for the month of September 2012 be received.

RECOMMEND RECIEPT

Date of Next Meeting – November 28, 2012 at 5:00 p.m.

OTHER BUSINESS

ADJOURNMENT



Traffic Safety Committee

OCT 24 2012

MINUTES

TRAFFIC SAFETY COUNCIL

THE CORPORATION OF THE CITY OF MISSISSAUGA
WEDNESDAY, SEPTEMBER 26, 2012 – 5:00 P.M.

COMMITTEE ROOM 'A', SECOND FLOOR
300 CITY CENTRE DRIVE, MISSISSAUGA, ONTARIO L5B 3C1
MISSISSAUGA, ONTARIO
www.mississauga.ca

Members Present

Councillor Frank Dale, Ward 4
Councillor Sue McFadden, Ward 10
Meredith Johnson (Trustee Ward 9 & 10 - Peel District School Board)
Deborah Goss (Citizen Member Ward 1)
Peter Westbrook (Citizen Member Ward 2)
Boris Swedak (Citizen Member Ward 3)
Edgar Lethbridge (Citizen Member Ward 4)
Louise Gogan (Citizen Member Ward 5)
David Brown (Citizen Member Ward 6) **(CHAIR)**
Daniel Suess (Citizen Member Ward 7)
Heather Relf (Citizen Member Ward 9)
David Raakman (Citizen Member Ward 10) **(VICE-CHAIR)** – Departed 5:42 p.m.
Bill McBain (Citizen Member Ward 11) – Arrived 5:22 p.m.
Shakil Akhter (Citizen Member Ward 10 North Zone)

Members Absent

John Dunn (Citizen Member Ward 8 South Zone)
Yasmeen Ashraf Irshaduddin (Citizen Member Ward 10 North Zone)
Doug Fryers (Citizen Member Ward 8)
Anna Abbruscato (Trustee Ward 4 -Dufferin-Peel Catholic School Board)
Deborah Goss (Citizen Member Ward 1)
Louise Gogan (Citizen Member Ward 5)

Advisory Board

Al Sousa, Manager, Traffic Engineering and Operations
Andy Bate, Supervisor, Traffic Operations
Denna Yaunan, Traffic Operations Technician
Sheelagh Duffin, Supervisor, Crossing Guards
Dave Marcotte, Supervisor, Preventative Maintenance, Peel District School Board
Anna Gentile, Student Transportation

Contact: Laura Wilson, Legislative Coordinator
Office of the Clerk 905-615-3200 ext. 5425 Fax 905-615-4181
laura.wilson@mississauga.ca

INDEX – TRAFFIC SAFETY COUNCIL, SEPTEMBER 26, 2012CALL TO ORDERDECLARATIONS OF DIRECT (OR INDIRECT) PECUNIARY INTERESTPRESENTATIONS / DEPUTATIONS

Karen Spencer, Advisor, City Manager's Office, with respect to the City Committees of Council Structure Review.

MATTERS TO BE CONSIDERED

1. Approval of Minutes of previous meeting
2. Site Inspection Report – St. Basil Catholic School, Ward 3
3. Site Inspection Report – St. Vincent de Paul Catholic School, Ward 3
4. Site Inspection Reports – Janet I. McDougald Public School, Ward 1
5. Site Inspection Request – Fallingbrook Senior Public School and Rick Hansen Secondary School, Ward 6
6. Site Inspection Request – Erin Mills Senior Public School, Ward 8
7. Site Inspection Request – Shelter Bay Public School, Ward 9
8. Site Inspection Request – The Valley's Senior Public School, Ward 4
9. Site Inspection Request – Janet I. McDougald Public School, Ward 1
10. Site Inspection Request – Dolphin Senior Public School, Ward 11
11. Site Inspection Request – Erin Centre Boulevard and Forest Hill Drive, Ward 11
12. School Walking Routes Participation Request, Ward 3
13. Dismissal Report – September 2012
14. Proposed Site Plan SP 09/074 – 935 Eglinton Avenue, Ward 6

INDEX CONTINUED – TRAFFIC SAFETY COUNCIL, SEPTEMBER 26, 2012ITEMS FOR INFORMATION

15. Resignation email dated June 26, 2012 from John Dunn, Traffic Safety Council Citizen Member, Ward 8, South Zone
16. Resignation email dated July 19, 2012 from Doug Fryers, Traffic Safety Council Citizen Member, Ward 8
17. Resignation email dated August 23, 2012 from Yasmeen Ashraf Irshaduddin, Traffic Safety Council Citizen Member, Ward 10, North Zone
18. Parking Enforcement in School Zones – June 2012
19. Petition received September 12, 2012 regarding the request for a Crossing Guard at the intersection of Winfield Terrace and Westbourne Terrace, Ward 4
20. Information Package - City Committees of Council Structure Review

Date of Next Meeting – October 24, 2012

OTHER BUSINESSADJOURNMENT

CALL TO ORDER

David Brown, Chair, called the meeting to order at 5:00 p.m.

David Raakman, Vice – Chair moved a motion to add an email dated September 26, 2012 from Denna Yaunan, Traffic Technician and attached Collision Summary and correspondence from the Traffic Safety Council Legislative Coordinator to the September 26, 2012 Traffic Safety Council Agenda.

This item was inadvertently numbered incorrectly by the Legislative Coordinator and should have been added as item number thirty (30).

RECOMMENDATION

That the email dated September 26, 2012 from Denna Yaunan, Traffic Technician, Engineering and Works Division, the attached Collision Summary for the intersection of Creditview Road/ Central Parkway West and Burnhamthorpe Road and the letter dated June 27, 2012 from the Legislative Coordinator outlining Traffic Safety Council's request for a traffic report for the intersection of Creditview Road/ Central Parkway West and Burnhamthorpe Road be added to the Traffic Safety Council Agenda for September 26, 2012 as item number twenty-nine (29).

APPROVED – (D. Raakman)

Recommendation - TSC-0123-2012

David Raakman, Vice – Chair moved a motion to add an email dated September 26, 2012 from Sheelagh Duffin, Crossing Guard Supervisor, with regarding a request for a Traffic Safety Council Citizen Member to attend a meeting regarding the Report dated September 19, 2012 from the Ontario Chief Coroner's Office with respect to Pedestrian Deaths in the Province of Ontario.

This item was inadvertently numbered incorrectly by the Legislative Coordinator and should have been added as item number thirty one (31).

RECOMMENDATION

That the email dated September 26, 2012, from Sheelagh Duffin, Crossing Guard Supervisor, with respect to a request for a Traffic Safety Council representative to attend a meeting to discuss the recommendations in the report dated September 19, 2012 from the Ontario Chief Coroner's Office with respect to Pedestrian Deaths in the Province of Ontario be added to the Traffic Safety Council Agenda for September 26, 2012 as item number thirty (30).

APPROVED – (D. Raakman)

Recommendation - TSC-0124-2012

DECLARATIONS OF DIRECT (OR INDIRECT) PECUNIARY INTEREST

David Raakman, Vice- Chair declared a conflict of interest with respect to any Agenda items or discussion specific to Ward 10 due to his temporary position in the Ward 10 office and in accordance with Council Resolution Number 0022-2012. He did not participate in any discussion or voting when Ward 10 matters were considered by Traffic Safety Council.

PRESENTATIONS / DEPUTATIONS

Karen Spencer, Advisor, City Manager's Office, addressed the committee with respect to the City Committees of Council Structure Review. She noted that the purpose of the project was to review the administration, operation, mandate and structure of existing and potential committees of Council. Ms. Spencer also outlined the timelines for this review and requested that committee citizen members complete a survey that would be sent from the City Manager's Office.

RECOMMENDATION

That the deputation by Karen Spencer, Advisor, City Manager's Office, with respect to the City Committees of Council Structure Review be received.

APPROVED – (B. Swedak)

Recommendation - TSC-0125-2012

MATTERS TO BE CONSIDERED

1. Approval of Minutes of previous meeting

Minutes of the Traffic Safety Council meeting held on June 20, 2012.

APPROVAL – (B. Swedak)

2. Site Inspection Report – St. Basil Catholic School, Ward 3

Site Inspection Report for the inspection conducted on September 11, 2012 to determine if the warrants were met for retention of the Crossing Guard located at the intersection of Rathburn Road and Golden Orchard Drive for students attending St. Basil Catholic School, 4235 Golden Orchard Drive.

RECOMMENDATION

1. That the Crossing Guard currently located at the intersection of Rathburn Road and Golden Orchard Drive for students attending St. Basil Catholic School, 4235 Golden Orchard Drive, be retained as the warrants have been met.

2. That the Transportation and Works Department be requested to do the following at St. Basil Catholic School:
 - a. Review existing signage in front of the school and replace the missing No U-Turn signs in front of the school.
 - b. Inform the Traffic Safety Council Legislative Coordinator once the missing No U-Turn signs have been installed.
3. That once the No U-Turn signs have been installed the Peel Regional Police be requested to enforce the No U-Turn signs in front of St. Basil Catholic
4. That the Legislative Coordinator be requested to inform the Peel Regional Police once the missing No U-Turn signs have been installed.

APPROVED – (P. Westbrook)
Recommendation - TSC-0126-2012

3. Site Inspection Report – St. Vincent de Paul Catholic School, Ward 3

Site Inspection Report for the inspection conducted on September 13, 2012 to determine if the warrants were met for retention of the Crossing Guard located at the intersection of Rathburn Road and Willowbank Trail for students attending St. Vincent de Paul Catholic School, 665 Willowbank Trail.

RECOMMENDATION

1. That the Crossing Guard located at the intersection of Rathburn Road and Willowbank Trail for students attending St. Vincent de Paul Catholic School, 665 Willowbank Trail, be removed as of December 21, 2012, as, similar to the results of the site inspections conducted on April 5, 2012 and April 17, 2012, the warrants are no longer met and turning traffic is light at this intersection.
2. That the Principal of St. Vincent de Paul Catholic School be requested to notify the affected students and parents that the Crossing Guard currently located at the intersection of Rathburn Road and Willowbank Trail will be removed on December 21, 2012.

APPROVED – (D. Suess)
Recommendation - TSC-0127-2012

4. Site Inspection Reports – Janet I. McDougald Public School, Ward 1

Site Inspection Reports for the inspections conducted on September 6, 2012 and September 18, 2012 to determine if the warrants were met for retention of the Crossing Guard located at the intersection of Cawthra Road and Atwater Avenue for students attending Janet I. McDougald Public School, 498 Hartsdale Avenue.

RECOMMENDATION

That the Crossing Guard currently located at the intersection of Cawthra Road and Atwater Avenue, for students attending Janet I. McDougald Public School, 498 Hartsdale Avenue, be retained as the warrants have been met.

APPROVED – (P. Westbrook)

Recommendation - TSC-0128-2012

5. Site Inspection Request – Fallingbrook Senior Public School and Rick Hansen Secondary School, Ward 6

Email dated September 7, 2012 with respect to a site inspection request to review pedestrian safety at Bristol Road and Kinglet Avenue/ Lismic Boulevard for students attending Fallingbrook Senior Public School, 5187 Fallingbrook Drive and Rick Hansen Secondary School, 1150 Dream Crest Road.

RECOMMENDATION

1. That the email dated September 7, 2012 with respect to a site inspection request to review pedestrian safety at Bristol Road and Kinglet Avenue/ Lismic Boulevard for students attending Fallingbrook Senior Public School, 5187 Fallingbrook Drive and Rick Hansen Secondary School, 1150 Dream Crest Road be received.
2. That the Site Inspection Subcommittee of Traffic Safety Council be requested to conduct a site inspection to review pedestrian safety at Bristol Road and Kinglet Avenue/ Lismic Boulevard, for students attending Fallingbrook Senior Public School, 5187 Fallingbrook Drive and Rick Hansen Secondary School, 1150 Dream Crest Road.

APPROVED – (D. Suess)

Recommendation – TSC-0129-2012

6. Site Inspection Request – Erin Mills Senior Public School, Ward 8

Email dated September 6, 2012, with respect to a site inspection request to review pedestrian safety at the intersection of Winston Churchill Boulevard and Burnhamthorpe Road for students attending Erin Mills Senior Public School, 3546 South Common Court.

RECOMMENDATION

1. That the email dated September 6, 2012, with respect to a site inspection request to review pedestrian safety at the intersection of Winston Churchill Boulevard and Burnhamthorpe Road for students attending Erin Mills Senior Public School, 3546 South Common Court be received.
2. That the Site Inspection Subcommittee of Traffic Safety Council be requested to conduct a site inspection to review pedestrian safety at the intersection of Winston Churchill Boulevard and Burnhamthorpe Road, for students attending Erin Mills Senior Public School.

APPROVED – (D. Raakman)

Recommendation – TSC-0130-2012

7. Site Inspection Request – Shelter Bay Public School, Ward 9

Email dated September 6, 2012 with respect to a site inspection request to review pedestrian safety at a school bus stop on Gulf Stream Way for students attending Shelter Bay Public School, 6735 Shelter Bay Road.

Discussion ensued with respect to moving the school bus stop and Sheelagh Duffin, Crossing Guard Supervisor noted that Student Transportation of Peel Region (STOPR) had already addressed and dealt with this concern.

RECOMMENDATION

1. That the email dated September 6, 2012 with respect to a site inspection request to review pedestrian safety at a school bus stop on Gulf Stream Way for students attending Shelter Bay Public School, 6735 Shelter Bay Road be received.
2. That Student Transportation of Peel Region (STOPR) be requested to review the school bus stop on Gulf Stream Way, for students attending Shelter Bay Public School and report back to Traffic Safety Council.

APPROVED – (H. Relf)

Recommendation – TSC-0131-2012

8. Site Inspection Request – The Valley's Senior Public School, Ward 4

Email dated September 10, 2012 with respect to a site inspection request to review pedestrian safety at Bloor Street and Central Parkway East, for students attending The Valley's Senior Public School, 1235 Mississauga Valley Boulevard.

David Brown, Chair, noted that the request was for a Crossing Guard to be placed for senior public school students in grades six (6) to eight (8) but that the Corporate Policy regarding Traffic Safety in School Zones allowed Traffic Safety Council to recommend the placement of Crossing Guards for students in kindergarten to grade five (5). Discussion ensued and there was general consensus that the request did not fall within the mandate of Traffic Safety Council.

RECOMMENDATION

1. That the email dated September 10, 2012 with respect to the request to extend the times of the Crossing Guards currently located at Bloor Street and Central Parkway East, for students attending The Valley's Senior Public School, 1235 Mississauga Valley Boulevard be received.
2. That the request to extend the times of the Crossing Guards currently located at the intersection of Bloor Street and Central Parkway East for senior public students attending The Valley's Senior Public School be denied as the City of Mississauga's Corporate Policy regarding Traffic Safety in School Zones, policy number 10-03-01 stipulates that Traffic Safety Council can recommend the placement of Crossing Guards for students in kindergarten to grade five (5) and therefore granting this request is not within the mandate of Traffic Safety Council.

APPROVED – (Councillor S. McFadden)
Recommendation – TSC-0132-2012

9. Site Inspection Request – Janet I. McDougald Public School, Ward 1

Email dated September 11, 2012 with respect to a site inspection request to review pedestrian safety and traffic congestion along Orano Avenue and Kenmuir Avenue for students attending Janet I. McDougald Public School, 1500 Ogden Avenue.

David Brown, Chair, noted that Peter Westbrook, Traffic Safety Council Citizen Member, and Dave Marcotte Supervisor, Preventative Maintenance, Peel District School Board, had reviewed the School Zone Safety (Kiss and Ride) at Janet I. McDougald Public School and that the issues encountered at the beginning of the year had subsided. He further noted that the Kiss and Ride had been functioning reasonably well.

Councillor McFadden raised a concern that future development in the area of Janet I. McDougald Public School could negatively impact traffic safety. Discussion ensued with respect to the type of development that would be built in the area.

RECOMMENDATION

1. That the email dated September 10, 2012 with respect to a request for a site inspection request to review pedestrian safety and traffic congestion along Orano Avenue and Kenmuir Avenue for students attending Janet I. McDougald Public School, 498 Hartsdale Avenue be received.
2. That the Site Inspection Subcommittee of Traffic Safety Council be requested to conduct a site inspection to review pedestrian safety and traffic congestion along Orano Avenue and Kenmuir Avenue for students attending Janet I. McDougald Public School, 498 Hartsdale Avenue.

APPROVED – (P. Westbrook)

Recommendation – TSC-0133-2012

10. Site Inspection Request – Dolphin Senior Public School, Ward 11

Email dated September 11, 2012 with respect to a site inspection request to review pedestrian safety along Thomas Street to Queen Street South for students attending Dolphin Senior Public School, 18 Brookside Drive.

RECOMMENDATION

1. That the email dated September 11, 2012 with respect to concerns related to speeding motorists along Thomas Street and the safety of students walking to Dolphin Senior Public School, 18 Brookside Drive be received.
2. That the Peel Region Police be requested to enforce traffic infractions along Thomas Street between Erin Mills Parkway and Queen Street South between 8:00 a.m. and 8:30 a.m. and 2:30 p.m. and 3:00 p.m.

APPROVED– (D. Raakman)

Recommendation – TSC-0134-2012

11. Site Inspection Request – Erin Centre Boulevard and Forest Hill Drive, Ward 11

Email dated September 20, 2012 with respect to a request for a site inspection to review pedestrian safety for students walking to and waiting at a school bus stop at the intersection of Erin Centre Boulevard and Forest Hill Drive.

RECOMMENDATION

1. That the email dated September 20, 2012 with respect to a request for a

site inspection to review pedestrian safety for students walking to a school bus stop at the intersection of Erin Centre Boulevard and Forest Hill Drive be received.

2. That the Site Inspection Subcommittee of Traffic Safety Council be requested to conduct a site inspection to review pedestrian safety at the intersection of Erin Centre Boulevard and Forest Hill Drive for students walking to a school bus stop located at this intersection.

APPROVED – (B. Swedak)

Recommendation – TSC-0135-2012

12. School Walking Routes Participation Request, Ward 3

Email dated September 18, 2012 from Councillor Chris Fonseca, Ward 3, requesting that St. Vincent de Paul Catholic School, 665 Willowbank Trail be considered for participation in the School Walking Routes Program.

RECOMMENDATION

That the email dated September 18, 2012 from Councillor Chris Fonseca requesting that St. Vincent de Paul Catholic School, 665 Willowbank Trail be considered for participation in the School Walking Routes Program be received and referred to the Walk to School Subcommittee of Traffic Safety Council for the subcommittee's consideration and response.

APPROVED – (Councillor S. McFadden)

Recommendation – TSC-0136-2012

13. Dismissal Report – September 2012

Boris Swedak, Traffic Safety Council Citizen Member, referred to the Loyola Catholic Secondary School Dismissal Report and noted that because the school was located in an industrial area many students could not walk to school but further noted that dismissal procedures functioned reasonably well.

RECOMMENDATION

That the Dismissal Report for the month of September 2012 be received.

RECEIVED – (B. Swedak)

Recommendation – TSC-0137-2012

The following recommendations emanated from the Dismissal Report for the month of September 2012:

September 12, 2012

St. Francis of Assisi Catholic School, Ward 2

Recommendation

1. That Parking Enforcement be requested to enforce parking infractions along Thorn Lodge Drive, in front of St. Francis of Assisi Catholic School, 2480 Thorn Lodge Drive, between 2:50 p.m. and 3:10 p.m.
2. That the Dufferin- Peel Catholic District School Board be requested to review the adequacy of the signage posted at the St. Francis of Assisi Catholic School driveway.

APPROVED – (B. Swedak)

Recommendation – TSC-0138-2012

September 17, 2012Edenrose Public School, Ward 6Recommendation

1. That Parking Enforcement be requested to conduct a multi day parking enforcement blitz to enforce parking infractions along Edenrose Street in the vicinity of Edenrose Public School, 1342 Edenrose Street, between the hours of 3:10 p.m. and 3:35 p.m.
2. That the Peel Regional Police be requested to enforce traffic infractions along Edenrose Street in the vicinity of Edenrose Public School between the hours of 3:10 p.m. and 3:35 p.m.
3. That Traffic Safety Council acknowledge the Principal, Vice- Principal and staff at Edenrose Public School for their efforts which have resulted in the dramatic improvement in the dismissal procedures at Edenrose Public School.

APPROVED – (B. Swedak)

Recommendation – TSC-0139-2012

14. Proposed Site Plan SP 09/074 – 935 Eglinton Avenue West, Ward 6

Report dated July 24, 2012 from the Site Plan Review Subcommittee of Traffic Safety Council, with respect to the Proposed Site Plan, SP 09/074 to build a private school at 935 Eglinton Avenue West.

David Brown, Chair, outlined the history of the proposed site plan and noted that there were some traffic safety concerns related to the development.

RECOMMENDATION

That the Commissioner of Planning and Building be advised that with respect to the Revised Site Plan SP 09/ 074 - Proposed Private School at 935 Eglinton Avenue West, Ward 6, the Site Plan Review Subcommittee of Traffic Safety Council reviewed the revised site plan submitted on July 9, 2012, and would recommend the following:

1. That modifications be made to the School Zone Safety (Kiss and Ride) Drop-Off lane area to 'smooth out' the lane as set out in the site plan and include the installation of a Stop Sign at the painted stop bar at the end of the lane.
2. That a Pedestrian Crossing Sign be installed at the front driveway for the pedestrian crossing as indicated on the site plan.
3. That the easterly driveway be restricted to ingress only and that No Exit signs be installed on both sides of the driveway.

APPROVED – (D. Raakman)

Recommendation – TSC-0140-2012

ITEMS FOR INFORMATION

15. Resignation email dated June 26, 2012 from John Dunn, Traffic Safety Council Citizen Member, Ward 8 South Zone

Email dated July 19, 2012 from John Dunn, Traffic Safety Council Citizen Member, Ward 8 South Zone advising of his resignation from Traffic Safety Council.

RECOMMENDATION

That the email dated July 19, 2012 from John Dunn, Traffic Safety Council Citizen Member, Ward 8 South Zone advising of his resignation from Traffic Safety Council be received.

RECEIVED – (Councillor F. Dale)

Recommendation – TSC-0141-2012

16. Resignation email dated July 19, 2012 from Doug Fryers, Traffic Safety Council Citizen Member, Ward 8

Email dated July 19, 2012 from Doug Fryers, Traffic Safety Council Citizen Member, Ward 8 advising of his resignation from Traffic Safety Council.

It was noted that Doug Fryers' had moved out of the City of Mississauga which was why he was resigning from Traffic Safety Council.

RECOMMENDATION

1. That the email dated July 19, 2012 from Doug Fryers, Traffic Safety Council Citizen Member, Ward 8 advising of his resignation from Traffic Safety Council be received.

2. That in appreciation of Doug Fryers' many years of volunteer service on Traffic Safety Council, a Certificate of Recognition be created for Mr. Fryers on behalf of Traffic Safety Council.

RECEIVED – (Councillor S. McFadden)
Recommendation – TSC-0142-2012

17. Resignation email dated August 23, 2012 from Yasmeen Ashraf Irshaduddin, Traffic Safety Council Citizen Member, Ward 10, North Zone.

Email dated August 23, 2012 from Yasmeen Ashraf Irshaduddin, Traffic Safety Council Citizen Member, Ward 10, North Zone advising of her resignation from Traffic Safety Council.

RECOMMENDATION

That the email dated August 23, 2012 from Yasmeen Ashraf Irshaduddin, Traffic Safety Council Citizen Member, Ward 10, North Zone advising of her resignation from Traffic Safety Council be received.

RECEIVED – (Councillor S. McFadden)
Recommendation – TSC-0143-2012

18. Parking Enforcement in School Zones – June 2012

Memorandum from Sheena Rodda, Manager, Parking Enforcement reporting on parking enforcement in school zones for the month of June 2012.

RECOMMENDATION

That the Memorandum from Sheena Rodda, Manager, Parking Enforcement reporting on parking enforcement in school zones for the month of June 2012 be received.

RECEIVED - (E. Lethbridge)
Recommendation – TSC-0144-2012

19. Petition received September 12, 2012 regarding the request for a Crossing Guard at the intersection of Winfield Terrace and Westbourne Terrace, Ward 4

Petition containing 22 signatures requesting that a Crossing Guard be placed at Winfield Terrace and Westbourne Terrace, received at Council on September 12, 2012 and referred to Traffic Safety Council for a site inspection.

RECOMMENDATION

1. That the petition containing twenty two (22) signatures requesting that a Crossing Guard be placed at Winfield Terrace and Westbourne Terrace, received at Council on September 12, 2012 and referred to Traffic Safety Council for a site inspection be received.
2. That the Site Inspection subcommittee of Traffic Safety Council be requested to conduct a site inspection to review the warrants for placing a Crossing Guard at the intersection of Winfield Terrace and Westbourne Terrace for students attending Huntington Ridge Public School, 345 Huntington Ridge Drive and St. Matthew Catholic School, 280 Kingsbridge Garden Circle.

RECEIVED – (P. Westbrook)
Recommendation – TSC-0145-2012

20. Information Package - City Committees of Council Structure Review

Information package dated June 22, 2012 from Karen Spencer, Advisor, City Manager's Office, with respect to the City Committee of Council Structure Review

RECOMMENDATION

That the information package dated June 22, 2012 from Karen Spencer, Advisor, City Manager's Office, with respect to the City Committees of Council Structure Review be received.

RECEIVED – (H. Relf)
Recommendation – TSC-0146-2012

21. Site Inspection Reports – Meadowvale Secondary School and Edenwood Public School, Ward 9

Site Inspection Reports for the inspections conducted on September 19, 2012 to review pedestrian safety in front of Meadowvale Secondary School, 6700 Edenwood Drive and Edenwood Senior Public School, 6770 Edenwood Drive and to review pedestrian safety at the intersection of Winston Churchill Boulevard and Battleford Road for students attending Meadowvale Secondary School and Edenwood Senior Public School.

RECOMMENDATION

1. That the request for a Crossing Guard at the intersection of Battleford Road and Winston Churchill Boulevard for students attending Meadowvale Secondary School, 6700 Edenwood Drive and Edenwood Senior Public School, 6770 Edenwood Drive, be denied as students crossing this intersection are in high school and middle school and the City of Mississauga's Corporate Policy regarding Traffic Safety in School Zones stipulates that Traffic Safety Council can recommend placement of a Crossing Guard for students in kindergarten to grade five (5).
2. That the request for a Crossing Guard in front of Meadowvale Secondary School and Edenwood Senior Public School be denied as students crossing are in high school and middle school and the City of Mississauga's Corporate Policy regarding Traffic Safety in School Zones stipulates that Traffic Safety Council can recommend placement of a Crossing Guard for students in kindergarten to grade five (5).
3. That Parking Enforcement be requested to enforce parking infractions along Edenwood Drive in the vicinity of Meadowvale Secondary School and Edenwood Senior Public School between 8:15 a.m. to 8:45 a.m. and 2:40 p.m. and 3:05 p.m.
4. That the Peel District School Board be requested to review the feasibility of doing the following at Meadowvale Secondary School:
 - a. Re-paint the School Zone Safety (Kiss and Ride).
 - b. Install appropriate School Zone Safety (Kiss and Ride) signage at the entrance to the School Zone Safety (Kiss and Ride).
 - c. Include the word parking on the Staff Only parking directional sign and on the Student Only parking directional sign located on the school building at the entrance to the School Zone Safety (Kiss and Ride).
5. That the Principal of Meadowvale Secondary School be requested to encourage motorists to utilize the School Zone Safety (Kiss and Ride) when dropping off and picking up students.

APPROVED – (D. Raakman)

Recommendation – TSC-0147-2012

22. Site Inspection Report – Settler's Green Public School, Ward 9

Site Inspection Report for the inspection conducted on September 20, 2012 to review the warrants for placing a Crossing Guard at the intersection of Montevideo Road and Lorca Crescent for students attending Settler's Green Public School, 5800 Montevideo Road.

RECOMMENDATION

1. That the request for a Crossing Guard at the intersection of Montevideo Road and Lorca Crescent for students attending Settler's Green Public School, 5800 Montevideo Road, be denied as the warrants have not been met.
2. That the Transportation and Works Department be requested to review the feasibility of doing the following at Settler's Green Public School:
 - a. Replace the faded No Stopping Signs in front of the school.
 - b. Install an additional No Stopping Sign east of the school entrance driveway.
 - c. Install an additional No Stopping Sign at the corner on Lorca Crescent, opposite from the school.
3. That Parking Enforcement be requested to enforce parking infractions along Lorca Crescent once the No Stopping Signs have been installed.

APPROVED – (H. Relf)

Recommendation – TSC-0148-2012

23. Site Inspection Report – Sheridan Park Public School and St. Francis of Assisi Catholic School, Ward 2

Site Inspection Report for the inspection conducted on September 21, 2012 to review the warrants for placing a Crossing Guard at the intersection of Sheridan Park Drive and Fifth Line West, for students attending Sheridan Park Public School, 2280 Perran Drive and St. Francis of Assisi Catholic School, 2480 Thorn Lodge Drive.

RECOMMENDATION

That the request for placement of a Crossing Guard at the intersection of Sheridan Park Drive and Fifth Line West for students attending Sheridan Park Public School, 2280 Perran Drive and St. Francis of Assisi Catholic School, 2480 Thorn Lodge Drive be granted as the warrants have been met.

APPROVED – (B. McBain)
Recommendation – TSC-0149-2012

24. Site Inspection Report – Blessed Teresa of Calcutta Catholic School, Ward 3

Site Inspection Report for the inspection conducted on September 25, 2012 to review the warrants for placing a Crossing Guard at the intersection of Runningbrook Drive and Riverspray Crescent for students attending Blessed Teresa of Calcutta Catholic School, 1120 Runningbrook Drive.

RECOMMENDATION

1. That the request for a Crossing Guard at the intersection of Runningbrook Drive and Riverspray Crescent for students attending Blessed Teresa of Calcutta Catholic School, 1120 Runningbrook Drive, be denied as the warrants have not been met.
2. That the Transportation and Works Department be requested to review the feasibility of moving the No Stopping Driveway Prohibition on the east side of Runningbrook Drive, south of the school exit driveway an additional car length away from the exit driveway.

APPROVED – (E. Lethbridge)
Recommendation – TSC-0150-2012

25. Site Inspection Request – McKinnon Public School, Ward 10

Email dated September 20, 2012 with respect to a request to review the warrants for placing a Crossing Guard at Rose Ridge Crescent and Mission Hill Drive for students attending McKinnon Public School, 3270 Tacc Drive.

David Raakman, Vice- Chair and Citizen Member, Ward 10, having declared a conflict of interest with respect to any items relating to Ward 10, left at 5:33 p.m. during discussion regarding item twenty five (25). Mr. Raakman returned at 5:40 p.m. when the discussion had closed.

Discussion ensued and there was general consensus that due to the nature of Tenth Line West, the committee would not recommend the placement of a Crossing Guard mid-block. Sheelagh Duffin, Crossing Guard Supervisor noted that there were School Walking Routes Signs in the area which did not direct students to cross Tenth Line at Rosewood Crescent/ Mission Hill but instead directed students north along Tenth Line West. It was further noted that students should cross at Tenth Line West and Tacc Drive.

RECOMMENDATION

1. That the email dated September 20, 2012 with respect to a request to review the warrants for placing a Crossing Guard mid- block on Tenth Line West at Rosewood Crescent/ Mission Hill Drive, for students attending McKinnon Public School, 3270 Tacc Drive be received.
2. That the request for a Crossing Guard mid- block on Tenth Line West at Rose Ridge Crescent/ Mission Hill Drive, for students attending McKinnon Public School be denied for the following reasons:
 - a. The intersection of Tenth Line West and Tacc Drive provides a signalized intersection for students to cross at and the School Walking Routes signs direct students to cross at the intersection of Tenth Line West and Tacc Drive.
 - b. Traffic Safety Council does not recommend the placement of Crossing Guards mid-block along Tenth Line West due to the nature of the roadway.
 - c. A signalized intersection will be installed at Sunlight Street and Tenth Line West which will provide students with an additional signalized intersection to cross at.
3. That the Principal of McKinnon Public School be requested to direct students to cross at the signalized intersection of Tenth Line West and Tacc Drive as per the School Walking Routes signs.

APPROVED – (Councillor S. McFadden)
Recommendation – TSC-0151-2012

26. School Zone Safety (Kiss & Ride) Report – September 2012

RECOMMENDATION

That the School Zone Safety (Kiss & Ride) Report for the month of September 2012 be received.

RECEIVED – (B. Swedak)
Recommendation – TSC-0152-2012

The following recommendations emanated from the School Zone Safety (Kiss & Ride) Report for the month of September 2012:

September 10, 2012**St. Dominic Separate School, Ward 1****Recommendation**

That the Peel District School Board be requested to review the feasibility of replacing the Fire Route Signs on the school property of St. Dominic Separate School, 515 Heartsdale Avenue.

APPROVED – (B. Swedak)

Recommendation – TSC-0153-2012

September 18, 2012**Janet I. McDougald Public School, Ward 1****Recommendation**

1. That the Peel District School Board be requested to review the feasibility of doing the following at Janet I. McDougald Public School, 498 Heartsdale Avenue:
 - a. Re-paint the middle lane of the School Zone Safety (Kiss and Ride) to read Bus Lane.
 - b. Install Maze Gates at the back of the school to restrict use of the school's rear parking lot.
2. That the Principal of Janet I. McDougald Public School be requested to close the Maze Gates, once installed, at the back of the school during the morning arrival and afternoon dismissal periods to restrict the use of the school's rear parking lot during these times.

APPROVED – (B. Swedak)

Recommendation – TSC-0154-2012

27. **Additional Dismissal Report – September 2012**

RECOMMENDATION

That the Additional Dismissal Report for the month of September 2012 be received.

RECEIVED – (B. Swedak)

Recommendation – TSC-0155-2012

The following recommendations emanated from the Additional Dismissal Report for the month of September 2012:

September 24, 2012**Loyola Catholic Secondary School, Ward 8****Recommendation**

1. That the Transportation and Works Department review the No Stopping signs on Sladeview Crescent in the vicinity of Loyola Catholic Secondary School, 4010 Sladeview Crescent.
2. That Parking Enforcement be requested to enforce parking infractions along Sladeview Crescent in the vicinity of Loyola Catholic Secondary School between 2:00 p.m. and 2:25 p.m.
3. That the Dufferin- Peel Catholic District School Board be requested to review the feasibility of doing the following at Loyola Catholic Secondary School:
 - a. Alter the entrance/ exit driveway into a one way driveway.
 - b. Install One Way, No Entrance and No Exist signage on the one way driveway.
 - c. Paint one way pavement markings on the one way driveway.
 - d. Paint directional arrows on the parking lot to direct traffic flow.
4. That the Transportation and Works Department be requested to install Bus Shelters on both sides of Sladeview Crescent.

APPROVED – (B. Swedak)

Recommendation – TSC-0156-2012

September 25, 2012**Settler's Green Public School, Ward 9****Recommendation**

1. That Parking Enforcement be requested to enforce parking infractions along Montevideo Road in the vicinity of Settler's Green Public School, 5800 Montevideo Road between 3:15 p.m. and 3:25 p.m.
2. That the Transportation and Works Department be requested to review the feasibility of doing the following at Settler's Green Public School:
 - a. Install No Stopping signs on the boulevard in the vicinity of the school's driveway entrance.
 - b. Replace faded signage in the vicinity of Settler's Green Public School.
 - c. Review the placement of the corner No Stopping signs on both sides of Lorca Crescent.

APPROVED – (B. Swedak)
Recommendation – TSC-0157-2012

28. Purchase Request – Frequent Walker Cards

Email dated September 24, 2012 from Sheelagh Duffin, Crossing Supervisor, requesting that the Walk to School Subcommittee of Traffic Safety Council be authorized to spend up to nine hundred dollars (\$900.00) from the Walk to School Subcommittee's budget allocation in the approved 2012 Traffic Safety Council budget to purchase ten thousand (10 000) Frequent Walker Cards for the School Walking Routes program.

RECOMMENDATION

1. That the email dated September 24, 2012 from Sheelagh Duffin, Crossing Supervisor, requesting that the Walk to School Subcommittee of Traffic Safety Council be authorized to spend up to nine hundred dollars (\$900.00) from the Walk to School Subcommittee's budget allocation in the approved 2012 Traffic Safety Council budget to purchase ten thousand (10 000) Frequent Walker Cards for the School Walking Routes program be received.
2. That the Walk to School Subcommittee of Traffic Safety Council be authorized to spend up to nine hundred dollars (\$900.00) from the Walk to School Subcommittee's budget allocation in the approved 2012 Traffic Safety Council budget to purchase ten thousand (10 000) Frequent Walker Cards for the School Walking Routes Program.

APPROVED – (P. Westbrook)
Recommendation – TSC-0158-2012

29. Traffic Safety Council Site Inspection and Event Calendar – October 2012

Traffic Safety Council Site Inspection Calendar outlining the site inspections to be completed and the Traffic Safety Council events for the month of October 2012.

Peter Westbrook, Traffic Safety Council Citizen Member noted the Walk to School Subcommittee events that would be taking place during the month of October 2012. David Brown, Chair, requested that Citizen Members volunteer to attend the Walk to School Subcommittee events.

RECOMMENDATION

That the Traffic Safety Council Site Inspection Calendar outlining the site inspections to be completed and the Traffic Safety Council events for the month of October 2012 be received.

RECEIVED – (B. McBain)
Recommendation – TSC-0159-2012

30. Email dated September 26, 2012 from Denna Yaunan, Traffic Technician, Engineering and Works Division

Email dated September 26, 2012 from Denna Yaunan, Traffic Technician, Engineering and Works Division, the attached Collision Summary for the intersection of Creditview Road/ Central Parkway West and Burnhamthorpe Road and the letter dated June 27, 2012 from the Legislative Coordinator outlining Traffic Safety Council's request for a traffic report for the intersection of Creditview Road/ Central Parkway West and Burnhamthorpe Road.

This item was incorrectly numbered as item number twenty nine (29) when it was added to the Agenda and should have been added as item number thirty (30).

RECOMMENDATION

1. That the email dated September 26, 2012 from Denna Yaunan, Traffic Technician, Engineering and Works Division, the attached Collision Summary for the intersection of Creditview Road/ Central Parkway West and Burnhamthorpe Road and the letter dated June 27, 2012 from the Legislative Coordinator outlining Traffic Safety Council's request for a traffic report for the intersection of Creditview Road/ Central Parkway West and Burnhamthorpe Road be received.
2. That the Traffic Safety Council Legislative Coordinator be requested to forward the Collision Summary for the intersection of Creditview Road/ Central Parkway West and Burnhamthorpe Road, from Denna Yaunan, Traffic Technician, to Jane McCann, Resident, in response to her request for a traffic report for this intersection.

APPROVED – (B. McBain)
Recommendation – TSC-0160-2012

31. Email dated September 26, 2012, from Sheelagh Duffin, Crossing Guard Supervisor

Email dated September 26, 2012, from Sheelagh Duffin, Crossing Guard Supervisor, with respect to a request for a Traffic Safety Council representative to attend a meeting to discuss the recommendations in the report dated September 19, 2012 from the Ontario Chief Coroner's Office with respect to Pedestrian Deaths in the Province of Ontario.

This item was incorrectly numbered as item number twenty thirty (30) when it was added to the Agenda and should have been added as item number thirty one (31).

Dan Suess, Traffic Safety Council Citizen Member and Bill McBain, Traffic Safety Council Citizen Member noted that they would be interested in attending a meeting to discuss the recommendations made in the Report from the Ontario Chief Coroner's Office with respect to Pedestrian Deaths in the Province of Ontario.

RECOMMENDATION

1. That the email dated September 26, 2012, from Sheelagh Duffin, Crossing Guard Supervisor, with respect to a request for a Traffic Safety Council representative to attend a meeting to discuss the recommendations in the report dated September 19, 2012 from the Ontario Chief Coroner's Office with respect to Pedestrian Deaths in the Province of Ontario be received.
2. That once a meeting is scheduled to discuss the recommendations in the report dated September 19, 2012 from the Ontario Chief Coroner's Office with respect to Pedestrian Deaths in the Province of Ontario, Traffic Safety Council representatives be requested to attend the meeting.

APPROVED – (P. Westbrook)

Recommendation – TSC-0161-2012

Date of Next Meeting – October 24, 2012 at 5:00 p.m.

OTHER BUSINESS

ADJOURNMENT

Site Inspection Report - Traffic Safety Council

Observers

Complete All Questions

File Number:

RT.10. Huntington Ridge Public School

File Number:

RT.10. St. Matthew Catholic School

Ward

4

Traffic Safety Committee

Observed By:

D. Suess

E. Lethbridge

S. Duffin

OCT 24 2012

D. Pest (AM)

D. Yaunan (PM)

A. Bate

Date of Inspection:

2012 09 12

Inspection Time:

8:20 AM

3:20 PM

Requested By:

Resident

Prepared By:

Request For:

Crossing Guard Placement

Weather Conditions: ☒ Dry ☒ Sunny ☐ Rain ☐ Snow ☐ Other:

Site

School:

Huntington Ridge Public School

Address:

345 Huntington Ridge Drive

School Times:

9:00

AM 3:30

PM

Student Population:

No. of School Buses:

School:

St. Matthew Catholic School

Address:

280 Kingsbridge Gardens Circle

School Times:

8:50

AM 3:20

PM

Student Population:

No. of School Buses:

School:

Address:

School Times:

AM

PM

Student Population:

No. of School Buses:

Location: (Please identify the location with reference to nearest intersection. Indicate nearest school and address.)

Westbourne Terrace & Winfield Terrace

Type of Crossing: ☐ 4 Way Intersection ☒ 3 Way Intersection ☐ Midblock (i.e., not at Intersection)Type of Control: ☐ Traffic Lights ☐ Yield Signs ☐ No Control☐ Stop Signs (Traffic is stopped on one street only) ☒ All Way Stop (Traffic is stopped in all directions)

Part 1 Site Conditions

School Signs:

☐ School Area Signs☐ School crossing Signs☒ Parking/Stopping Prohibition

Posted Speed Limit:

☐ 40 km/hr☒ 50 km/hr☐ 60 km/hr☐ Other

km/hr

Visibility of Crossing Pedestrians:

☐ Poor☐ Fair☒ Good

Sight Obstructions:

☐ Hedges☐ Trees☐ Fences☐ Bus Shelter☐ Newspaper Boxes☐ Other (Specify)

Road Grade:

☒ Flat☐ Incline☐ Decline

Road Geometrics:

☐ Straight☒ Curved

Road Width: 33

☒ Feet☐ Metres

Curb to Curb:

☐ Feet☐ Metres

Curb to Median:

☐ Feet☐ Metres

Road Conditions:

☒ Dry☐ Wet☐ Snow Covered☐ Ice

Sidewalks:

☐ Not Present☒ North☒ South☐ East☒ West

Proximity to School:

☒ In Front of☐ Within☐ Feet☐ Metres

Route Survey:

☐ Shopping Area☐ Construction☐ Driveway☐ Other (Specify)

Road Geometrics:

☐ Transit Bus Stop☐ Underpass☐ Parked Vehicles Within☐ Feet☐ Metres

2a Warrant Survey

Location:

Check Appropriate Box For The Access Required

Westbourne Terrace & Winfield Terrace

SAFE GAP TIME (W/3.5+4) = 13 SEC.

Morning Intervals

No.
Peds.: Time: Gaps:

			# of Gaps	# of Conflicts
1	8:20-8:25	300 No Gaps in this 5 minute period		
	8:25-8:30	33/23/20/61/55		
2	8:30-8:35	24,25/36//27,22/56/////I		
3	8:35-8:40	24,13,17///17,70//39/22/		
2	8:40-8:45	45,23/20,25,38//22,17/22///		
6	8:45-8:50	//18,31/////14/45,37//33/		
6	8:50-8:55	38////48/80,28		
3	8:55-9:00	49/////19//24////14/24,35,25,42/		

Afternoon Intervals

No./
Peds.: Time: Gaps:

	3:20-3:25	////28,14/60/54/27,17
	3:25-3:30	51,20/16//14/////143//33///
20	3:30-3:35	14/73,22/48,36/43
29	3:35-3:40	31,67,21//14/15/////24//17,27/
2	3:40-3:45	//14,63//1355,56,55
1	3:45-3:50	47///45/20,67,47

Comments/Conflicts

Parents stop/ park in no stopping area at the park trail access behind the schools. Many also park on Westbourne Terrace then walk the students across Winfield to access the park trail. At least half the students crossing here were coming from parked cars. 1 vehicle did not stop for the stop sign on Winfield Terrace which was reported to the Peel Regional Police. 1 motorist backed up across the entrance to the walkway and several parents made u turns in the morning. It is an extremely quiet neighbourhood except during school times.

Recommendations

1. That the request for a Crossing Guard at the intersection of Winfield Terrace and Westbourne Terrace for students attending Huntington Ridge Public School, 345 Huntington Ridge Drive and St. Matthew Catholic School, 280 Kingsbridge Garden Circle, be denied as the warrants have not been met. 2. That the Transportation and Works Department be requested to review the No Stopping signage in the vicinity of the intersection of Winfield Terrace and Westbourne Terrace. 3. That once the appropriate signage is in place, Parking Enforcement be requested to enforce parking infractions in the vicinity of the intersection of Winfield Terrace and Westbourne Terrace for students attending Huntington Ridge Public School and Westbourne Terrace between 8:40 a.m. and 9:00 a.m. and 3:20 p.m. and 3:45 p.m.

Observations

A) Volume of Traffic: (See Intersection Plan)

B) Number of Crossing Pedestrians

☐ Heavy ☒ Light ☐ Intermittent

23 AM 52 PM

WESTBOURNE TERRACE & WINFIELD TERRACE
WED. SEPT. 12 @ 820 \$ 3²⁰

2b

Laura Wilson

From: Sacha Smith on behalf of Traffic Safety
Sent: 2012/07/24 12:57 PM
To: Laura Wilson
Subject: FW: Crossing guard request-Winfield terrace/Westbourne terrace
Attachments: crossing guard.jpg; DSCF2620.JPG; DSCF2621.JPG; DSCF2630.JPG; DSCF2632.JPG

From: pooja budhiraja [mailto:
Sent: 2012/07/23 4:28 PM
To: Traffic Safety
Cc: sharon.totafurno@peelsb.com
Subject: Crossing guard request-Winfield terrace/Westbourne terrace

Hello,

I am writing this E-Mail to request for inspection of crossing guard placement at the corner of
WINFIELD TERRACE/WESTBOURNE TERRACE.

Reason for request-There has been a previous request for crossing guards at this intersection but was not approved. The traffic at this intersection has increased 3 fold in the past 6 months .A lot more people are using the back entrance to school due to parking restrictions at the front of school. Signs were placed for no parking close to stop sign at this intersection but no one follows them .**There is a huge risk for kids crossing. I am attaching pictures taken at the end of school day(pictures were taken on 29th JUNE,2012) and also a petition signed by numerous parents** whose kids walk to school and who believe a crossing guard is needed at this location. I reside in front of the intersection and have also witnessed a minor accident due to traffic congestion.

Kindly schedule an inspection at the beginning of school year in September.

The details are as follows:

Name of school: Huntington Ridge P.S

Intersection : Winfield Terrace/Huntington Ridge

Name of person requesting: Pooja Budhiraja(On behalf of a lot more)

Address:

Phone No:

Thanks

I will follow up again during September when school begins.

Pooja Budhiraja

2c

Site Inspection Report - Traffic Safety Council

Traffic Safety Council

APR 27 2011

Observers

Complete All Questions

File Number:

RT.10. Huntington Ridge Public School

File Number:

RT.10. St. Matthew Catholic School

Ward

4

Observed By:

D. Freyers

P. Westbrook

S. Duffin

D. Yaunan

A. Bate

Date of Inspection:

2011 04 19

Inspection Time:

8:15 AM

3:35 PM

Requested By:

Resident

Prepared By:

D. Yaunan/ D. Freyers

Request For:

Crossing Guard

Weather Conditions: ☒ Dry ☐ Sunny ☐ Rain ☐ Snow ☒ Other: +2**Site**

School:

Huntington Ridge Public School

Address:

345 Huntington Ridge Drive

School Times:

9:00

AM

3:30 PM

Student Population:

No. of School Buses:

School:

St. Matthew Catholic School

Address:

280 Kingsbridge Gardens Circle

School Times:

8:45

AM

3:15 PM

Student Population:

No. of School Buses:

School:

Address:

School Times:

AM

PM

Student Population:

No. of School Buses:

Location: (Please identify the location with reference to nearest intersection. Indicate nearest school and address.)

Westbourne Terrace & Winfield TerraceType of Crossing: ☐ 4 Way Intersection ☒ 3 Way Intersection ☐ Midblock (i.e., not at Intersection)Type of Control: ☐ Traffic Lights ☐ Yield Signs ☐ No Control☐ Stop Signs (Traffic is stopped on one street only) ☒ All Way Stop (Traffic is stopped in all directions)**Part 1 Site Conditions**

School Signs:

☐ School Area Signs☐ School crossing Signs☐ Parking/Stopping Prohibition

Posted Speed Limit:

☐ 40 km/hr☒ 50 km/hr☐ 60 km/hr☐ Other

km/hr

Visibility of Crossing Pedestrians:

☐ Poor☒ Fair☐ Good

Sight Obstructions:

☐ Hedges☐ Trees☐ Fences☐ Bus Shelter☐ Newspaper Boxes☐ Other (Specify)

Road Grade:

☒ Flat☐ Incline☐ Decline

Road Geometrics:

☐ Straight☒ Curved

Road Width: 32

☒ Feet☐ Metres

Curb to Curb:

☐ Feet☐ Metres

Curb to Median:

☐ Feet☐ Metres

Road Conditions:

☒ Dry☐ Wet☐ Snow Covered☐ Ice

Sidewalks:

☐ Not Present☒ North☒ South☐ East☒ West

Proximity to School:

☐ In Front of☐ Within☐ Feet☐ Metres

Route Survey:

☐ Shopping Area☐ Construction☐ Driveway☐ Other (Specify)

Road Geometrics:

☐ Transit Bus Stop☐ Underpass☐ Parked Vehicles Within☐ Feet☐ Metres

warrant Survey

Check Appropri. Box For The Access Required

Location:

Westbourne Terrace & Winfield Terrace

SAFE GAP TIME (W/3.5+4) = 13 SEC.

Morning Intervals

No.

Peds.: Time: Gaps:

of Gaps # of Conflicts

	8:15-8:20	27 31 14 89 //	12
	8:20-8:25	/// 21 120 41 / 31	15
2	8:25-8:30	/ 76 82 /	11
	8:30-8:35	/ 45 / 43 //	6
4	8:35-8:40	20 // 47 // 25 / 37	7
10	8:40-8:45	117 // 33 /// 19 /// 26 14 44 64 /	15
3	8:45-8:50	/ 24 /// 35 / 54 /// 18 17	9
3	8:50-8:55	64 / 16 / 20 /// 21 /// 32 // 19	10
5	8:55-9:00	39 / 15 /// 14 / 15 22 21 / 16 25	10

Afternoon Intervals

No./

Peds.: Time: Gaps:

	3:15-3:20	49 // 22 25 15	6
	3:20-3:25	53 / 148 / 17 /// 13	17
11	3:25-3:30	69 38 / 35 32 16 / 43	15
19	3:30-3:35	37 // 23 / 18 25 50 / 25 /// 27 /// 18 ///	12
19	3:35-3:40	20 / 20 / 22 20 36 32 / 24 44 /	12
2	3:40-3:45	28 28 // 56 15 /// 30	11
	3:45-3:50		

Comments/Conflicts

Traffic is school related. Parents are dropping students off at this walkway at the back of the school. Some are making u turns and running the stop sign on Winfield Terrace but not when students are crossing. It is a quiet street otherwise.

Recommendations

1. That the request for a Crossing Guard at the intersection of Winfield Terrace and Westbourne Terrace for the students attending Huntington Ridge Public School, 345 Huntington Ridge Drive and St. Matthew Catholic School, 280 Kingsbridge Garden Circle, be denied as the warrants have not been met and the all way stop provides protection for students crossing the intersection. 2. That Transportation and Works be requested to review the signage at the pathway on Winfield Terrace.

Observations

A) Volume of Traffic: (See Intersection Plan)

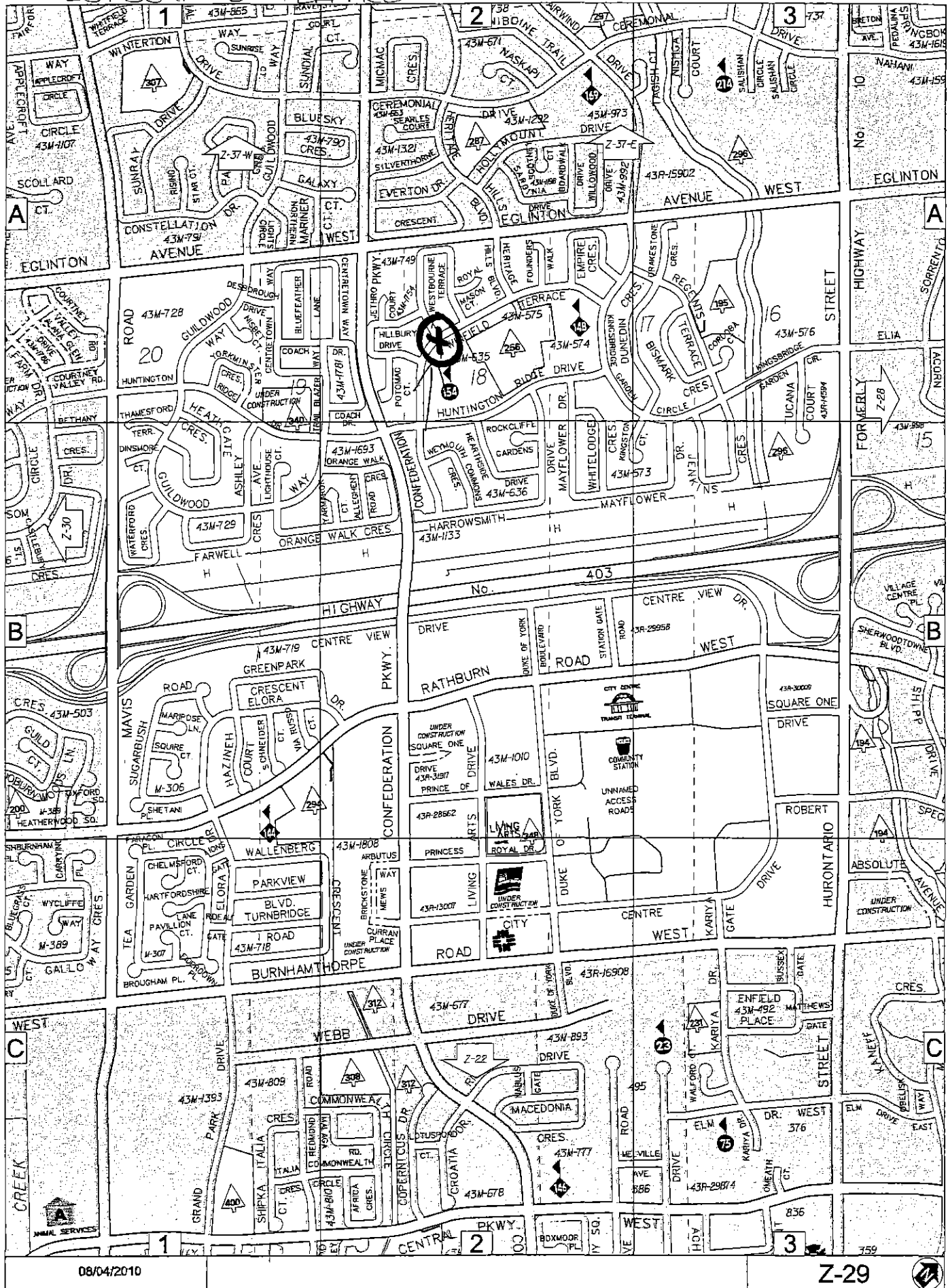
B) Number of Crossing Pedestrians

☐ Heavy
 ☒ Light
 ☐ Intermittent

27 AM 51 PM

2e

THUR SEPT. 27 @ 820 \$ 320 WINFIELD TERRACE \$
WESTBOURNE TERRACE



08/04/2010

Z-29



Site Inspection Report - Traffic Safety Council

3

Observers

Complete All Questions

File Number:

RT.10. St. Timothy Catholic School

File Number:

RT.10.

Ward

7

Observed By:

E. Lethbridge

S. Duffin

A. Liya

and Safety Committee

OCT 24 2012

Date of Inspection:

2012 10 04

Inspection Time:

8:30 AM

3:30 PM

Requested By:

Student Transportation

Prepared By:

A. Liya/ E. Lethbridge

Request For:

Crossing Guard

Weather Conditions: ☒ Dry ☒ Sunny ☐ Rain ☐ Snow ☐ Other:

Site

School: St. Timothy Catholic School	Address: 2214 Cliff Road	School Times: 9:00 AM 3:30 PM Student Population: 516 No. of School Buses:
School:	Address:	School Times: AM PM Student Population: No. of School Buses:
School:	Address:	School Times: AM PM Student Population: No. of School Buses:

Location: (Please identify the location with reference to nearest intersection. Indicate nearest school and address.)

Cherry Post Drive & Camilla Road

Type of Crossing: ☐ 4 Way Intersection ☒ 3 Way Intersection ☐ Midblock (i.e., not at Intersection)

Type of Control: ☐ Traffic Lights ☐ Yield Signs ☐ No Control

☐ Stop Signs (Traffic is stopped on one street only) ☒ All Way Stop (Traffic is stopped in all directions)

Part 1 Site Conditions

School Signs: ☐ School Area Signs ☐ School crossing Signs ☐ Parking/Stopping Prohibition

Posted Speed Limit: ☒ 40 km/hr ☐ 50 km/hr ☐ 60 km/hr ☐ Other km/hr

Visibility of Crossing Pedestrians: ☐ Poor ☐ Fair ☒ Good

Sight Obstructions: ☒ Hedges ☐ Trees ☐ Fences ☐ Bus Shelter
☐ Newspaper Boxes ☐ Other (Specify)

Road Grade: ☒ Flat ☐ Incline ☐ Decline

Road Geometrics: ☒ Straight ☐ Curved

Road Width: ☐ Feet ☐ Metres Curb to Curb: **11** ☐ Feet ☒ Metres Curb to Median: ☐ Feet ☐ Metres

Road Conditions: ☒ Dry ☐ Wet ☐ Snow Covered ☐ Ice

Sidewalks: ☐ Not Present ☒ North ☒ South ☒ East ☒ West

Proximity to School: ☐ In Front of ☒ Within ☐ Feet ☐ Metres

Route Survey: ☐ Shopping Area ☐ Construction ☐ Driveway ☐ Other (Specify)

Road Geometrics: ☒ Transit Bus Stop ☐ Underpass ☐ Parked Vehicles Within ☐ Feet ☐ Metres

3a Warrant Survey

Location:

Cherry Post Drive & Camilla Road

Check Appropriate Box For The Access Required

SAFE GAP TIME (W/3.5+4) = 14 SEC.

Morning Intervals

No.

Peds.: Time:

Gaps:

			# of Gaps	# of Conflicts
	8:30-8:35	////19,68/18///20,60	11	
6	8:35-8:40	////50,26,17/35///29,18	10	
1	8:40-8:45	97,26///37/21///36////	13	
8	8:45-8:50	15/////127,27//58/////1111	7	
6	8:50-8:55	55/////34,27,14/////1115/	8	
	8:55-9:00	45//27///45//34,42,15/////11	13	

Afternoon Intervals

No./

Peds.: Time:

Gaps:

	3:30-3:35	34///16///45///31///	8	
	3:35-3:40	///15,35/////1111,1111,111117/////11	4	
31	3:40-3:45	16///27/////1111,138/////171/14//	6	
34	3:45-3:50	16/////1111,111141/////1111,1111,1111,1111	3	
7	3:50-3:55	//27,23//22//17,29,29,24/	9	
3	3:55-4:00	53///15/////1111,1132///16///55	10	

Comments/Conflicts

No conflicts were observed. Most students crossed with parents and the All Way Stop provides protection for crossing students. Traffic was school related. There are 391 potential walkers, 1 large school bus and 3 small busses.

Recommendations

That the request for a Crossing Guard at the intersection of Cherry Post Drive and Camilla Road for students attending St. Timothy Catholic School, 2214 Cliff Road be denied as the warrants have not been met and the All Way Stop provides protection for crossing students.

Observations

A) Volume of Traffic: (See Intersection Plan)

B) Number of Crossing Pedestrians

☐ Heavy ☐ Light ☒ Intermittent

21 AM 75 PM

THURS. OCT. 4 @ 830 \$ 330 @ CHERRY POST DR.

RT. 10. STT

Corporate Services Department
Legislative Services Division
Office of the City Clerk

\$ CAMILLA ROAD

3b

City of Mississauga
300 City Centre Drive
MISSISSAUGA ON L5B 3C1



Leading today for tomorrow

FAX: 905-615-4181
www.mississauga.ca

June 27, 2012

To: Principal
St. Timothy Catholic School
2214 Cliff Road
Mississauga, ON

Re: Request for Crossing Guard
Reference: TSC-0099-2012/ GC-0426-2012

Traffic Safety Council on May 23, 2012 considered the above captioned matter and recommended the following:

TSC-0099-2012

1. That the request for a Crossing Guard at Camilla Road and Cherry Post Drive for students attending St. Timothy Catholic School, 2214 Cliff Road, be denied as the warrants have not been met.
2. That the Site Inspection subcommittee of Traffic Safety Council be requested to re-inspect the intersection of Camilla Road and Cherry Post Drive in the fall of 2012 once the kindergarten to grade four (4) students attending St. Timothy Catholic School are no longer being bussed.

This recommendation was approved at General Committee on May 30, 2012 and subsequently adopted at Council, on June 6, 2012.

Laura Wilson,
Legislative Coordinator
(905) 615-3200 ext. 5425

cc. B. Bjarnason, Manager of Planning, Dufferin-Peel Catholic School Board
B. Iannicca, Trustee, Dufferin-Peel District Catholic School Board
S. Duffin, Crossing Guard Supervisor
Councillor N. Iannicca, Ward 7

3c Site Inspection Report - Traffic Safety Council

Observers Complete All Questions		
File Number: RT.10. St. Timothy Catholic School	File Number: RT.10.	Ward 7
Observed By: D. Fryers	D. Yaunan (PM)	S. Duffin
D. Castronovo (AM)		
Date of Inspection: 2012 10 04	Inspection Time: 8:30 AM 3:30 PM	
Requested By: Student Transportation	Prepared By:	Request For: Crossing Guard

Weather Conditions: ☒ Dry ☐ Sunny ☐ Rain ☐ Snow ☐ Other:

Site

School: St. Timothy Catholic School	Address: 2214 Cliff Road	School Times: 9:00 AM 3:30 PM Student Population: No. of School Buses:
School:	Address:	School Times: AM PM Student Population: No. of School Buses:
School:	Address:	School Times: AM PM Student Population: No. of School Buses:

Location: (Please identify the location with reference to nearest intersection. Indicate nearest school and address.)

Cherry Post Drive & Camilla Road

Type of Crossing: ☐ 4 Way Intersection ☒ 3 Way Intersection ☐ Midblock (i.e., not at Intersection)
 Type of Control: ☐ Traffic Lights ☐ Yield Signs ☐ No Control
☐ Stop Signs (Traffic is stopped on one street only) ☒ All Way Stop (Traffic is stopped in all directions)

Part 1 Site Conditions

School Signs: ☐ School Area Signs ☒ School crossing Signs ☐ Parking/Stopping Prohibition

Posted Speed Limit: ☒ 40 km/hr ☐ 50 km/hr ☐ 60 km/hr ☐ Other km/hr

Visibility of Crossing Pedestrians: ☐ Poor ☐ Fair ☒ Good

Sight Obstructions: ☒ Hedges ☐ Trees ☐ Fences ☐ Bus Shelter
☐ Newspaper Boxes ☐ Other (Specify)

Road Grade: ☒ Flat ☐ Incline ☐ Decline

Road Geometrics: ☒ Straight ☐ Curved

Road Width: ☐ Feet ☐ Metres Curb to Curb: 11 ☐ Feet ☒ Metres Curb to Median: ☐ Feet ☐ Metres

Road Conditions: ☒ Dry ☐ Wet ☐ Snow Covered ☐ Ice

Sidewalks: ☐ Not Present ☐ North ☐ South ☒ East ☒ West

Proximity to School: ☐ In Front of ☐ Within ☐ Feet ☐ Metres

Route Survey: ☐ Shopping Area ☐ Construction ☐ Driveway ☐ Other (Specify)

Road Geometrics: ☒ Transit Bus Stop ☐ Underpass ☐ Parked Vehicles Within ☐ Feet ☐ Metres

ST. TIMOTHY MAY 15, 2012 @ CHERRY POST
Laura Wilson DR. \$ CAMILLA RD @ 830 \$ 330

3d

From: Sheelagh Duffin
Sent: April 30, 2012 3:56 PM
To: Laura Wilson
Cc: Macina, Marcy
Subject: RE: St. Timothy/Corsair
Attachments: Sheelagh Duffin.vcf

Hi Laura,

Would you kindly schedule a Site Inspection at Camilla Road and Cherry Post Drive for before the TSC meeting May 23 to determine if the warrants are met for the placement of a crossing guard. We do have students that currently cross here to access both Corsair Public and St. Timothy Catholic schools (although the Corsair students can cross with the crossing guard just north of Cherry Post Drive at Camilla Walkway). As per Marcy's e-mail below, there will be kindergarten to grade 4 St. Timothy students coming off the bus in September and they will need to cross at Cherry Post Drive since they are not permitted to cross at the Camilla Road walkway since it would take them through Corsair PS property.

The Site Inspection would be for:

St. Timothy Catholic School. The times for the Site Inspection would be 8:30 - 9:00am and 3:30 - 4:00pm

Thanks, Laura.

Sheelagh



From: Macina, Marcy [mailto:Marcy.Macina@dpcdsb.org]
Sent: 2012/03/26 4:30 PM
To: Sheelagh Duffin
Subject: St. Timothy/Corsair

Hi Sheelagh,

In our reassessment this year for St. Timothy, students on Sherobee will be removed from the bus effective for September 2012. I know there is a guard on Camilla Rd for Corsair at the Easement. Would it be possible to move this guard or provide an additional guard for St. Timothy students to cross at Cherry Post, they are unable to walk through the public school?

K to 4 students have always been bussed not sure why when Corsair has always walked.

Let me know what you think.

Thank you ~

3e Site Inspection Report - Traffic Safety Council

Observers Complete All Questions

File Number:

RT.10. St. Timothy Catholic School

File Number:

RT.10.

Ward

7

Observed By:

D. Fryers

D. Yaunan (PM)

S. Duffin

Traffic Safety Committee

D. Castronovo (AM)

MAY 23 2012

Date of Inspection:

2012 05 15

Inspection Time:

8:30 AM

3:30 PM

Requested By:

Student Transportation

Prepared By:

Request For:

Crossing Guard

Weather Conditions: ☒ Dry ☐ Sunny ☐ Rain ☐ Snow ☐ Other:

Site

School:

St. Timothy Catholic School

Address:

2214 Cliff Road

School Times:

9:00

AM 3:30

PM

Student Population:

No. of School Buses:

School:

Address:

School Times:

AM

PM

Student Population:

No. of School Buses:

School:

Address:

School Times:

AM

PM

Student Population:

No. of School Buses:

Location: (Please identify the location with reference to nearest intersection. Indicate nearest school and address.)

Cherry Post Drive & Camilla Road

Type of Crossing: ☐ 4 Way Intersection ☒ 3 Way Intersection ☐ Midblock (i.e., not at Intersection)

Type of Control: ☐ Traffic Lights ☐ Yield Signs ☐ No Control

☐ Stop Signs (Traffic is stopped on one street only) ☒ All Way Stop (Traffic is stopped in all directions)

Part 1 Site Conditions

School Signs:

☐ School Area Signs

☒ School crossing Signs

☐ Parking/Stopping Prohibition

Posted Speed Limit:

☒ 40 km/hr

☐ 50 km/hr

☐ 60 km/hr

☐ Other

km/hr

Visibility of Crossing Pedestrians:

☐ Poor

☐ Fair

☒ Good

Sight Obstructions:

☒ Hedges

☐ Trees

☐ Fences

☐ Bus Shelter

☐ Newspaper Boxes

☐ Other (Specify)

Road Grade:

☒ Flat

☐ Incline

☐ Decline

Road Geometrics:

☒ Straight

☐ Curved

Road Width:

☐ Feet

☐ Metres

Curb to Curb: 11

☐ Feet

☒ Metres

Curb to Median:

☐ Feet

☐ Metres

Road Conditions:

☒ Dry

☐ Wet

☐ Snow Covered

☐ Ice

Sidewalks:

☐ Not Present

☐ North

☐ South

☒ East

☒ West

Proximity to School:

☐ In Front of

☐ Within

☐ Feet ☐ Metres

Route Survey:

☐ Shopping Area

☐ Construction

☐ Driveway

☐ Other (Specify)

Road Geometrics:

☒ Transit Bus Stop

☐ Underpass

☐ Parked Vehicles Within

☐ Feet

☐ Metres

Warrant Survey

Check Appropriate Box For The Access Required

3f

Location:

Cherry Post Drive & Camilla Road

SAFE GAP TIME (W/3.5+4) = 14 SEC.

Morning Intervals

No.

Peds.: Time:

Gaps:

			# of Gaps	# of Conflicts
	8:30-8:35	//17,15//30/////15///22/////19/17///22//	9	
1	8:35-8:40	57/34/40,38/////1170/	15	
1	8:40-8:45	14/51,46,54,34/16	13	
2	8:45-8:50	30///22//23,17/29/14/66/	12	
2	8:50-8:55	19/18,22//44/////1/21//21/21,35	11	
6	8:55-9:00	26,17//20,27///57///17,14,18	11	
	9:00-9:05			
	9:05-9:10			
	9:10-9:15			
	9:15-9:20			

Afternoon Intervals

No./

Peds.: Time:

Gaps:

	3:30-3:35	////18/////1/91,15//	8	
4	3:35-3:40	/21/////50/25/////30/15	8	
4	3:40-3:45	27/14,46///25,25///35///15//24//	11	
34	3:45-3:50	////,////,////,////60/////11	4	
10	3:50-3:55	17,24/////1111,1111,1111,111136/16,19/////17//	7	
	3:55-4:00	30,14///45///17//25,16/	9	
	4:00-4:05			
	4:05-4:10			
	4:10-4:15			
	4:10-4:15			
	4:20-4:25			
	4:25-4:30			

Comments/Conflicts

No conflicts were observed. There were busses for kindergarten to grade 4. Students attending St. Timothy Catholic School living on Sherobee Road are to be removed from the bus in September 2012. St. Timothy Catholic School students cannot cross with the Crossing Guard for Corsair Public School as St. Timothy Catholic School students are prohibited from walking through the Corsair Public School property. St. Timothy Catholic School students must cross at Camilla Road and Cherry Post Drive.

Recommendations

1. That the request for a Crossing Guard at Camilla Road and Cherry Post Drive for students attending St. Timothy Catholic School 2214 Cliff Road, be denied as the warrants have not been met. 2. That the Site Inspection subcommittee of Traffic Safety Council be requested to re-inspect the intersection of Camilla Road and Cherry Post Drive in the fall of 2012 once the kindergarten to grade four (4) students attending St. Timothy Catholic School are no longer being bussed.

Observations

A) Volume of Traffic: (See Intersection Plan)

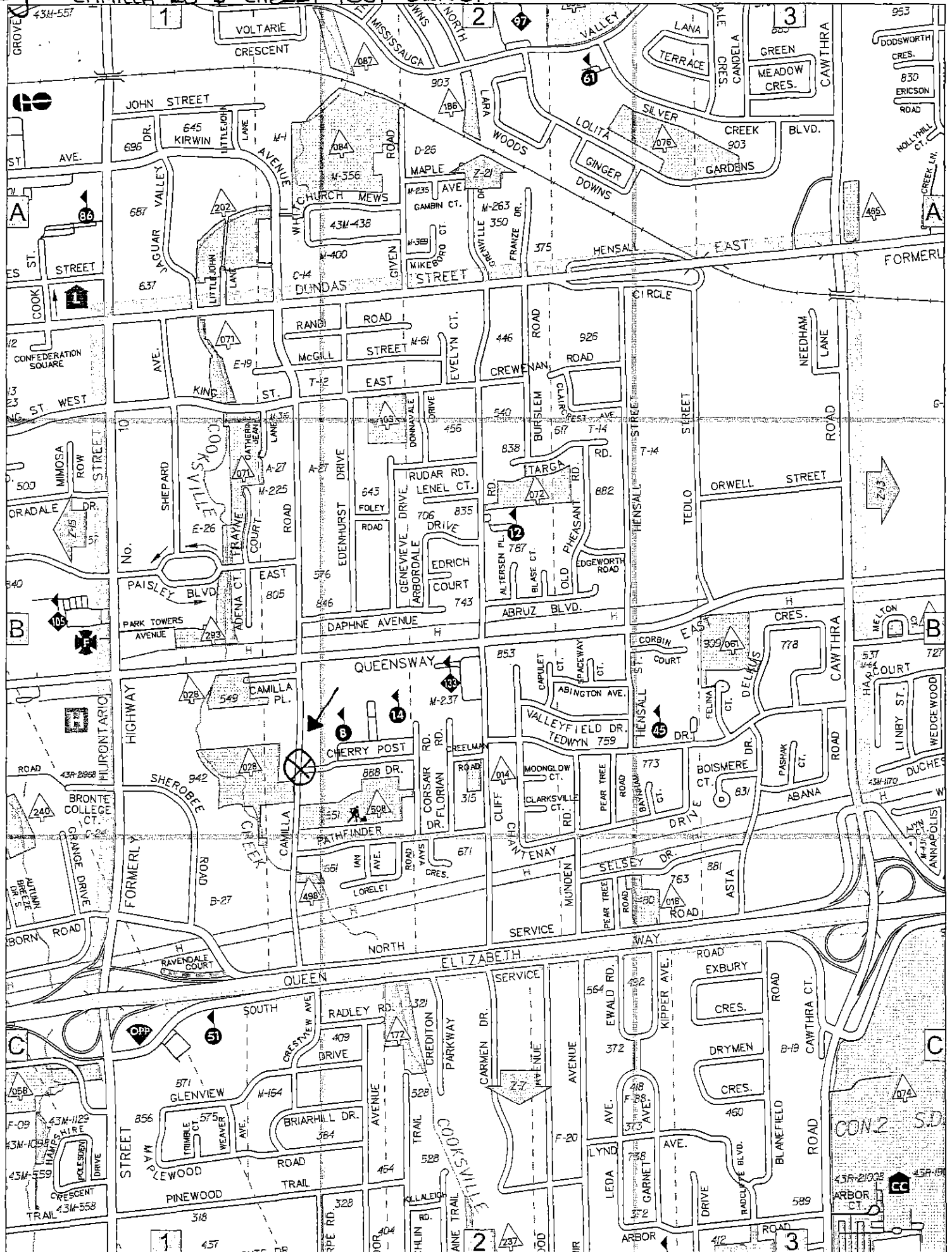
B) Number of Crossing Pedestrians

☐ Heavy ☐ Light ☒ Intermittent

12 AM 52 PM

39

CAMILLA RD & CHERRY POST DRIVE.



Site Inspection Report - Traffic Safety Council

Observers Complete All Questions		Ward		Traffic Safety Committee	
File Number:		File Number:		OCT 24 2012	
RT.10. St. Joseph Catholic Elementary		RT.10.		11	
Observed By:		S. Duffin		D. Pest	
D. Suess					
Date of Inspection:		Inspection Time:			
2012 10 01		8:15 AM 3:15 PM			
Requested By:		Prepared By:		Request For:	
Residents (Girl Guide Group)				Review warrants for Guard	

Weather Conditions: ☒ Dry ☐ Sunny ☐ Rain ☐ Snow ☐ Other:

Site

School:	Address:	School Times:	8:45 AM 3:15 PM
St. Joseph Catholic Elementary	249 Church Street	Student Population:	
		No. of School Buses:	
School:	Address:	School Times:	AM PM
		Student Population:	
		No. of School Buses:	
School:	Address:	School Times:	AM PM
		Student Population:	
		No. of School Buses:	

Location: (Please identify the location with reference to nearest intersection. Indicate nearest school and address.)

Church Street and Old Pine Street

Type of Crossing: ☐ 4 Way Intersection ☒ 3 Way Intersection ☐ Midblock (i.e., not at Intersection)

Type of Control: ☐ Traffic Lights ☐ Yield Signs ☐ No Control

☒ Stop Signs (Traffic is stopped on one street only) ☐ All Way Stop (Traffic is stopped in all directions)

Part 1 Site Conditions

School Signs: ☒ School Area Signs ☐ School crossing Signs ☐ Parking/Stopping Prohibition

Posted Speed Limit: ☒ 40 km/hr ☐ 50 km/hr ☐ 60 km/hr ☐ Other km/hr

Visibility of Crossing Pedestrians: ☐ Poor ☐ Fair ☒ Good

Sight Obstructions: ☐ Hedges ☐ Trees ☐ Fences ☐ Bus Shelter

☐ Newspaper Boxes ☐ Other (Specify)

Road Grade: ☒ Flat ☐ Incline ☐ Decline

Road Geometrics: ☒ Straight ☐ Curved

Road Width: ☐ Feet ☐ Metres Curb to Curb: 27 ☒ Feet ☐ Metres Curb to Median: ☐ Feet ☐ Metres

Road Conditions: ☒ Dry ☐ Wet ☐ Snow Covered ☐ Ice

Sidewalks: ☐ Not Present ☐ North ☒ South ☒ East ☒ West

Proximity to School: ☒ In Front of ☐ Within ☐ Feet ☐ Metres

Route Survey: ☐ Shopping Area ☐ Construction ☐ Driveway ☐ Other (Specify)

Road Geometrics: ☐ Transit Bus Stop ☐ Underpass ☐ Parked Vehicles Within ☐ Feet ☐ Metres

4a Warrant Survey

Location:

Check Appropriate Box For The Access Required

Church Street and Old Pine Street

SAFE GAP TIME (W/3.5+4) = 12 SEC.

Morning Intervals

No.
Peds.: Time: Gaps:

			# of Gaps	# of Conflicts
	8:15-8:20	/19,21/39,23////17,37///12//28,41	9	
1	8:20-8:25	13/27,35/16,12///15,55	7	
	8:25-8:30	53,/31//13/////19,19///29/25,38,20	9	
2	8:30-8:35	19/////12/45///17/15,14,19/////1/31	8	
6	8:35-8:40	33/////16/////113/////14/////29///31	6	
	8:40-8:45	40/13//17//23/24//16/////14/16/15//16	10	
	8:45-8:50	16,14/////16///16/////117/12/////12,12,42/	9	

Afternoon Intervals

No./
Peds.: Time: Gaps:

15	3:15-3:20	49//34,12///52,17,23///32/12//15	9	
	3:20-3:25	////34/20//22/12//42//17//12	7	
	3:25-3:30	///24,20/18,43,14//17/26///28	8	
2	3:30-3:35	24/17///13,40//23,29//30/17/////24		

Comments/Conflicts

Most students crossed Church Street from the church parking lot across from the school with parents. The School Zone Safety (Kiss and Ride) was under utilized.

Recommendations

1. That the request for a Crossing Guard at the intersection of Church Street and Old Pine Street for students attending St. Joseph Catholic Elementary School, 249 Church Street be denied as the warrants have not been met. 2. That the Transportation and Works Department be requested to review the signage along Church Street in the vicinity of St. Joseph Catholic Elementary School 3. That once the Transportation and Works Department has reviewed the signage, Parking Enforcement be requested to enforce parking infractions along Church Street in the vicinity of St. Joseph Catholic Elementary School between 8:20 a.m. and 8:50 a.m. and between 3:10 p.m. and 3:30 p.m.

Observations

A) Volume of Traffic: (See Intersection Plan)

B) Number of Crossing Pedestrians

☐ Heavy ☐ Light ☒ Intermittent

9 AM 17 PM

TUES. OCT. 2 @ 815 \$ 315 @ CHURCH STREET
\$ OLD PINE

4b

Laura Wilson

From: Sacha Smith on behalf of Traffic Safety
Sent: 2012/05/23 1:59 PM
To: Laura Wilson
Subject: FW: Recommendation - Crosswalk at St Joseph's Catholic Elementary School
Attachments: Letter to Council_GFSC-Recommendation.pdf; ATT00001.htm

From: [REDACTED]
Sent: May 23, 2012 9:13 AM
To: George Carlson
Cc: Roadsafety Committee; Traffic Safety; [REDACTED]
Subject: Recommendation - Crosswalk at St Joseph's Catholic Elementary School

Mr. Carlson. Thank you for receiving this message and reviewing the attachment.

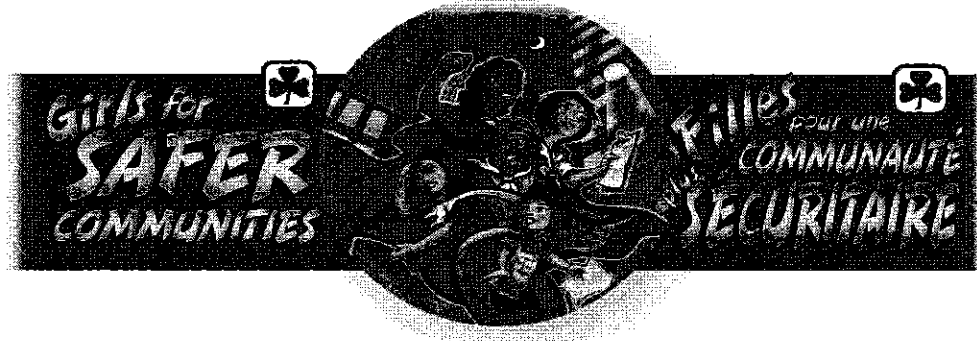
Please find a copy of a letter from the members of the 191st Mississauga Pathfinders.
The original letter has been sent to your office via registered mail - #RW 646 675 266 CA

A copy of the letter is being shared with the following via this email message.

Warm regards.

191st Mississauga Pathfinders
Girl Guides of Canada

:a)



May 17, 2012

George Carlson
Ward 11 City Councillor
300 City Centre Drive
Mississauga, Ontario L5B 3C1

Subject: Recommendation - Crosswalk at St Joseph's Catholic Elementary School

Dear Sir:

We are the 191st Mississauga Pathfinders, a Girl Guides of Canada unit consisting of 15 girls ages 12-14. We recently completed the Girls for Safer Communities program in which we were trained in leadership skills and community safety. In our leadership role, we conducted safety audits with younger Girl Guides in the area around St. Joseph's Catholic Elementary School on Church Street in Streetsville. During our safety audits, we identified the lack of a crosswalk as an important safety concern for children and families.

Based on our safety audit findings and research, we are writing to recommend that the City of Mississauga install a crosswalk at the intersection in front of the elementary school where we hold our weekly Pathfinders meetings:

St. Joseph's Catholic Elementary School, 249 Church Street, Mississauga L5M 1N1.

During our research, we learned that crosswalks are important for two reasons:

1. Crosswalks warn motorists to expect pedestrians.
2. Crosswalks indicate where pedestrians can safely cross.

We learned that

- a child's brain cannot accurately predict cars and distance until the age of 12. The majority of students at St. Joseph's are under the age of 12.
- almost half of automobile accidents happen on Friday, Saturday, or Sunday. A crosswalk is just as important on the weekend as on school days.
- crosswalks are more effective when combined with other strategies such as road signs. Other schools in Mississauga have school zone speed limit signs accompanied by a flashing light when the speed limit is in effect.

We concluded that a marked crosswalk is an important tool to improve safety in this area for both students and community members.

We also learned that Mississauga had the highest number of pedestrian fatalities last year compared to the previous five years. We hope that a crosswalk at the corner of Church Street and Old Pine Street will avoid a tragedy in our neighbourhood.

We have attached a photo of the area and location of the proposed crosswalk and a photo of our Pathfinders unit.

We are sharing this letter with the Road Safety Committee, the Mississauga Traffic Safety Council, the Ward 11 Trustee for the Dufferin-Peel Catholic District School Board, and Safe City Mississauga.

We appreciate your consideration and action on our recommendation.

Yours truly,

[REDACTED]

[REDACTED]

[REDACTED]

[REDACTED]

[REDACTED]

[REDACTED]

[REDACTED]

[REDACTED]

[REDACTED]

[REDACTED]

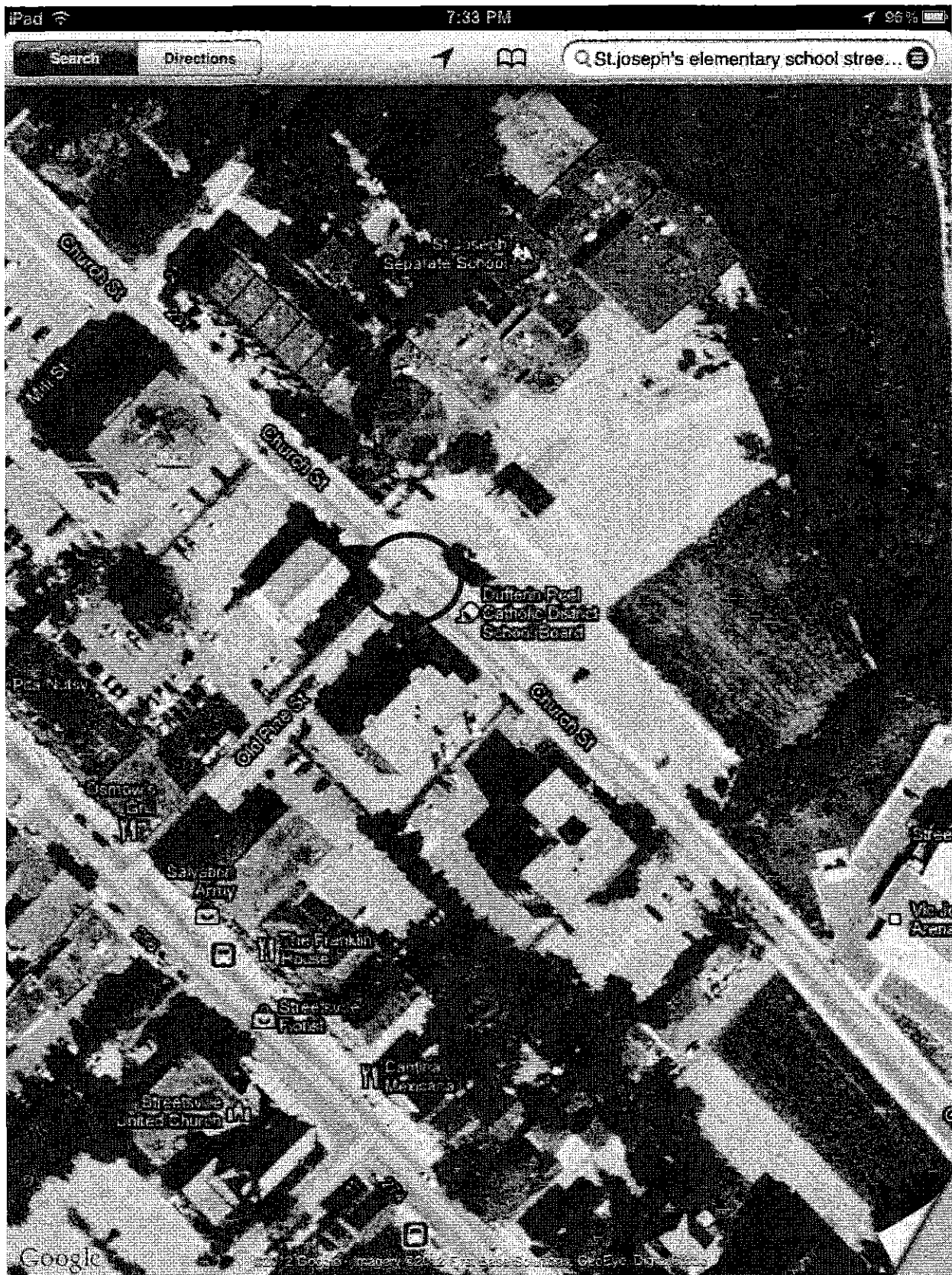
[REDACTED]

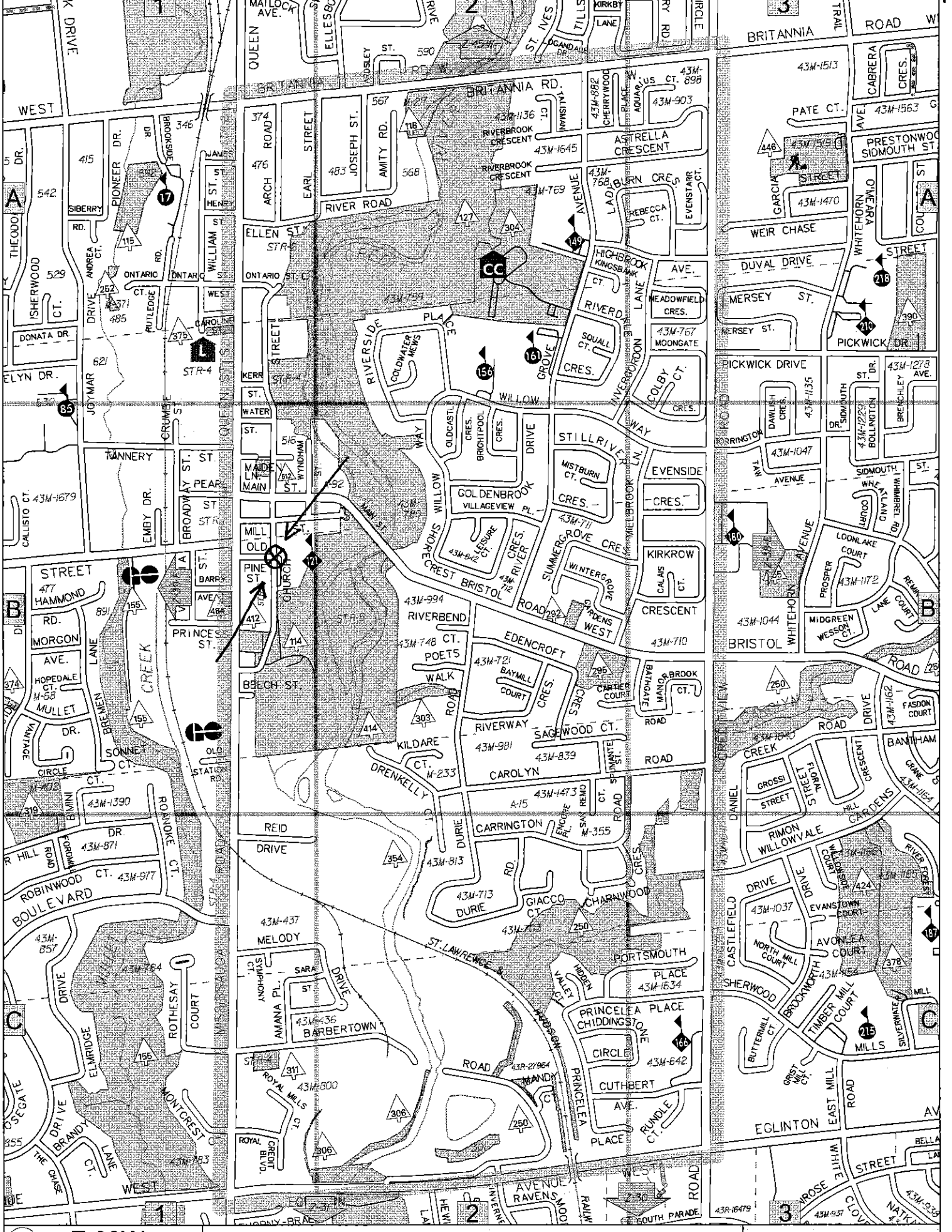
[REDACTED]

[REDACTED]

191st Mississauga Pathfinders
Girl Guides of Canada

[REDACTED]
[REDACTED]
[REDACTED]

PROPOSED LOCATION OF CROSSWALK



5 Site Inspection Report - Traffic Safety Council

Observers

Complete All Questions

File Number:

RT.10. Loyola Secondary School

File Number:

RT.10.

Ward

8

Traffic Safety Committee

Observed By:

H. Relf

D. Yaunan

B. Swedak (PM)

OCT 24 2012

D. Raakman (AM)

S. Duffin

Date of Inspection:

2012 10 11

Inspection Time:

7:42 AM

2:15 PM

Requested By:

Resident

Prepared By:

Request For:

Review Pedestrian Safety

Weather Conditions: ☒ Dry ☒ Sunny ☐ Rain ☐ Snow ☐ Other:

Site

School:

Loyola Secondary School

Address:

4010 Sladeview Cres

School Times: 8:12 AM 2:15 PM

Student Population: 1055

No. of School Buses:

School:

Address:

School Times: AM PM

Student Population:

No. of School Buses:

School:

Address:

School Times: AM PM

Student Population:

No. of School Buses:

Location: (Please identify the location with reference to nearest intersection. Indicate nearest school and address.)

Sladeview Crescent in front of school

Type of Crossing: ☒ 4 Way Intersection ☐ 3 Way Intersection ☒ Midblock (i.e., not at Intersection)

Type of Control: ☐ Traffic Lights ☐ Yield Signs ☐ No Control

☐ Stop Signs (Traffic is stopped on one street only) ☐ All Way Stop (Traffic is stopped in all directions)

Part 1 Site Conditions

School Signs:

☐ School Area Signs

☐ School crossing Signs

☐ Parking/Stopping Prohibition

Posted Speed Limit:

☐ 40 km/hr

☒ 50 km/hr

☐ 60 km/hr

☐ Other

km/hr

Visibility of Crossing Pedestrians:

☐ Poor

☐ Fair

☒ Good

Sight Obstructions:

☐ Hedges

☐ Trees

☐ Fences

☐ Bus Shelter

☐ Newspaper Boxes

☐ Other (Specify)

Road Grade:

☒ Flat

☐ Incline

☐ Decline

Road Geometrics:

☒ Straight

☐ Curved

Road Width:

☐ Feet

☐ Metres

Curb to Curb:

☐ Feet

☐ Metres

Curb to Median:

☐ Feet

☐ Metres

Road Conditions:

☒ Dry

☐ Wet

☐ Snow Covered

☐ Ice

Sidewalks:

☐ Not Present

☐ North

☒ South

☒ East

☒ West

Proximity to School:

☐ In Front of

☐ Within

☐ Feet

☐ Metres

Route Survey:

☐ Shopping Area

☐ Construction

☐ Driveway

☐ Other (Specify)

Road Geometrics:

☒ Transit Bus Stop

☐ Underpass

☐ Parked Vehicles Within

☐ Feet

☐ Metres

Warrant Survey

Location:

Check Appropriate Box For The Access Required

5a

Sladeview Crescent in front of school

SAFE GAP TIME (W/3.5+4) = SEC.

Morning Intervals

No.
Peds.: Time: Gaps:

of Gaps # of Conflicts

8:30-8:35

8:35-8:40

8:40-8:45

8:45-8:50

8:50-8:55

8:55-9:00

Afternoon Intervals

No./
Peds.: Time: Gaps:

3:30-3:35

3:35-3:40

3:40-3:45

3:45-3:50

3:50-3:55

Comments/Conflicts

The School Zone Safety (Kiss and Ride) and Dismissal procedures functioned well. During the morning arrival time, all but 3 students crossed at the signalized intersection of Burnhamthorpe Road. Left hand turning traffic from Sladeview Crescent to Ridgeway Drive was delayed as there are no controls in place. Traffic also backed up north bound left onto Sladeview Crescent. All traffic was school related and motorists were cognative of students. It didn't appear that school related traffic was using Drummond Road as a cut through. The traffic was light along Drummond Road.

Recommendations

1. That the Transportation and Works Department, Traffic Operations Division, be requested to do the following for students attending Loyola Catholic Secondary School, 4010 Sladeview Crescent:

- Review the feasibility of installing a traffic control signal at the intersection of Ridgeway Drive and Sladeview Crescent/ Drummond Road.
- Review the signage along Sladeview Crescent in front of Loyola Catholic Secondary School.

2. That the Transportation and Works Department, Transit Division be requested to do the following for students attending Loyola Catholic Secondary School:

- Provide the Traffic Safety Council Legislative Coordinator with information pertaining to the number of busses that are scheduled to service the 2:15 p.m. dismissal time at Loyola Catholic Secondary School on Sladeview Crescent.
- Review the feasibility of installing transit shelters at the bus stop on the north side of Sladeview Crescent opposite from the school.

3. That the Dufferin- Peel Catholic District School Board be requested to review the feasibility of installing a vinyl clad, chain link fence along the school property line on the north side of Burnhamthorpe Road to discourage vehicles from dropping students off on Burnhamthorpe Road.

Observations

A) Volume of Traffic: (See Intersection Plan)

B) Number of Crossing Pedestrians

☐ Heavy ☐ Light ☐ Intermittent

AM

PM

5b

THU. OCT. 11 @ 7:42 \$ 215

RT. 10. L0Y

Corporate Services Department
Legislative Services Division
Office of the City Clerk

City of Mississauga
300 City Centre Drive
MISSISSAUGA ON L5B 3C1



Leading today for tomorrow

FAX: 905-615-4181
www.mississauga.ca

July 11, 2011

To: Principal
Loyola Secondary School
3566 South Common Court
Mississauga, ON

Re: Site Inspection Request – The New Site for Loyola Secondary School
Reference: TSC-0134-2011/GC-0515-2011

Traffic Safety Council on June 22, 2011, considered the above captioned matter and recommended the following:

TSC-0134-2011

That the email dated June 17, 2011 from Mrs. Gerry Hughes requesting that the Site Inspection Subcommittee of Traffic Safety Council review pedestrian safety in front of the new site of Loyola Secondary School, 4010 Sladeview Crescent, when the school is built, be referred to the Site Inspection Subcommittee of Traffic Safety Council.

This recommendation was approved at General Committee on June 29, 2011 and subsequently adopted at Council, on July 6, 2011.

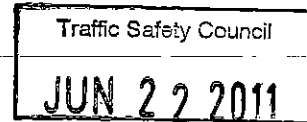
A handwritten signature in cursive script, appearing to read "Wilson".

Laura Wilson
Legislative Coordinator
(905) 615-3200 ext. 5425

cc. B. Bjarnason, Manager of Planning, Dufferin-Peel Catholic School Board
Mrs. G. Hughes, Resident, Ward 8 (via email)
S. Hobin, Trustee, Dufferin-Peel District Catholic School Board
A. Bate, Supervisor, Traffic Operations (via email)
Councillor K. Mahoney, Ward 8

Laura Wilson

From: Sacha Smith on behalf of Traffic Safety
Sent: June 17, 2011 3:39 PM
To: Laura Wilson
Subject: FW: Loyola's new site - Traffic Concerns
Attachments: Loyola Traffic.docx



From: GERRY HUGHES [mailto:]
Sent: June 17, 2011 9:51 AM
To: [REDACTED]; Traffic Safety
Subject: Loyola's new site - Traffic Concerns

Dear Sharon Hobin, Hazel McCallion, Katie Mahoney, Joseph Giancola, Cathy Saytar and Traffic Safety Council of Mississauga:

The reason for this email is of great concern for me and it has to do with the traffic once the new Loyola High School is built. I have thought long and hard about this and I'm very worried about the huge increase in traffic that will occur on my street once this school is opened. It will be without a doubt nothing short of a nightmare. I live on Drummond Road and if you look at the map attached, you will see that my street is the only street other than Burnhamthorpe (already very busy) and Unity that will take all the traffic to Loyola. All students who attend the new Loyola will come from the east, there will not be any traffic from the west as this building is right on the Oakville border.

As I understand it, will the entrance for Loyola will be off Sladeview? If so, Sladeview is really just a continuation of Drummond Road on the other side of Ridgeway. If I was a parent driving my child to school, Drummond Road would be my choice as it makes for the most direct route and the one to avoid traffic on Burnhamthorpe and Unity. I'm afraid that most parents will be thinking the same thing. I'm already noticing a HUGE increase in traffic on Ridgeway since it was extended to Eglinton. I take my kids to school (Iona) at 7:40 in the morning, give or take five minutes, and I'm already finding it difficult to turn left onto Ridgeway. It's amazing how much more traffic there is already on Ridgeway! Can you imagine what it will be like when hundreds and hundreds of cars are trying to make their way to Loyola? Will there be any entrance to the school from Burnhamthorpe? If the answer is no, there has to be something done to prevent traffic going down my street. I promise you that it will be horrendous not only for the residents of Drummond Road and side streets, but also for the traffic on Burnhamthorpe and Unity as well. I surely hope that more than one entrance is planned for this school.

Can I make a suggestion? Can you make Drummond Road a Through Street in both directions? This will force the traffic to take Unity that nicely runs into Sladeview. If cars took that route, they would drive around to the school entrance and then either take a left or right onto Ridgeway when they are done. This solution will not be perfect as I still foresee a nightmare for Ridgeway on all counts. I originally thought opening up Ridgeway was a great idea, but not any more as the Loyola traffic will only make Ridgeway so much more congested. Another HUGE concern that needs to be addressed is school busses. They cannot be allowed to drive down Drummond Road. The sheer length of them will take up so much room. :)

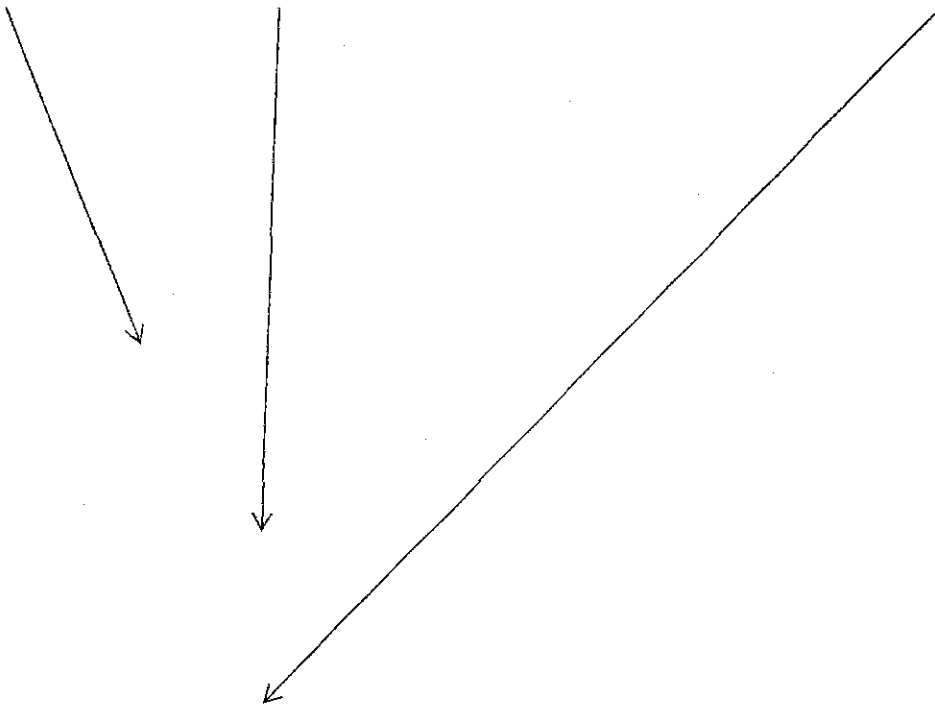
I'm very worried about this problem and I do hope that you have thought about this. I would be happy to talk in person. I look forward to hearing back from you and very anxious to hear what solutions are in place.

With deepest concern,

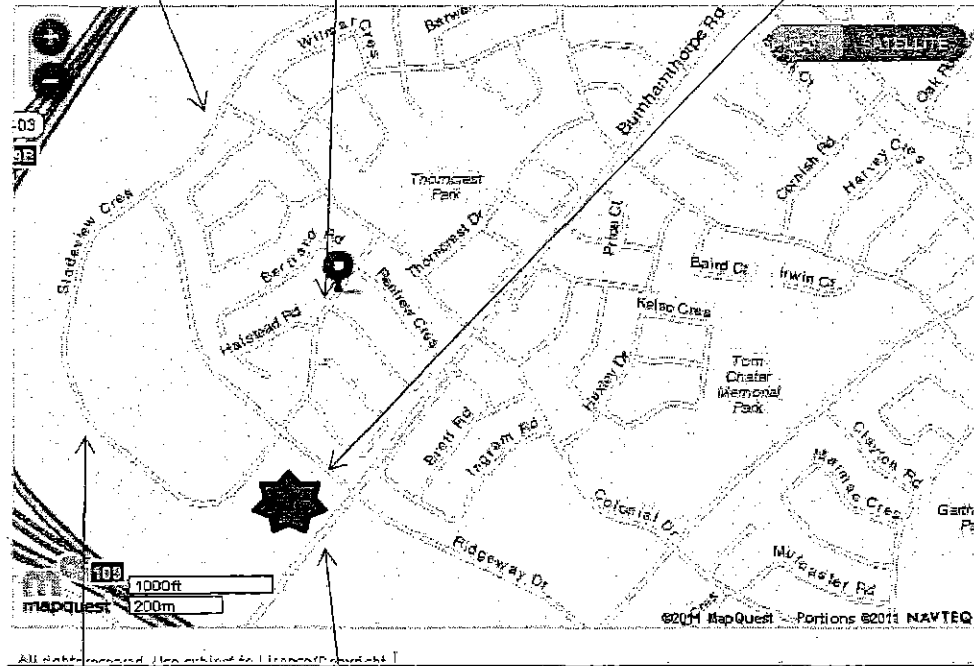
5d

Mrs. Gerry Hughes.

[REDACTED]
I have attached a map of the area and my lame attempt to probably point out the obvious, but I needed to try. Thank you. :)



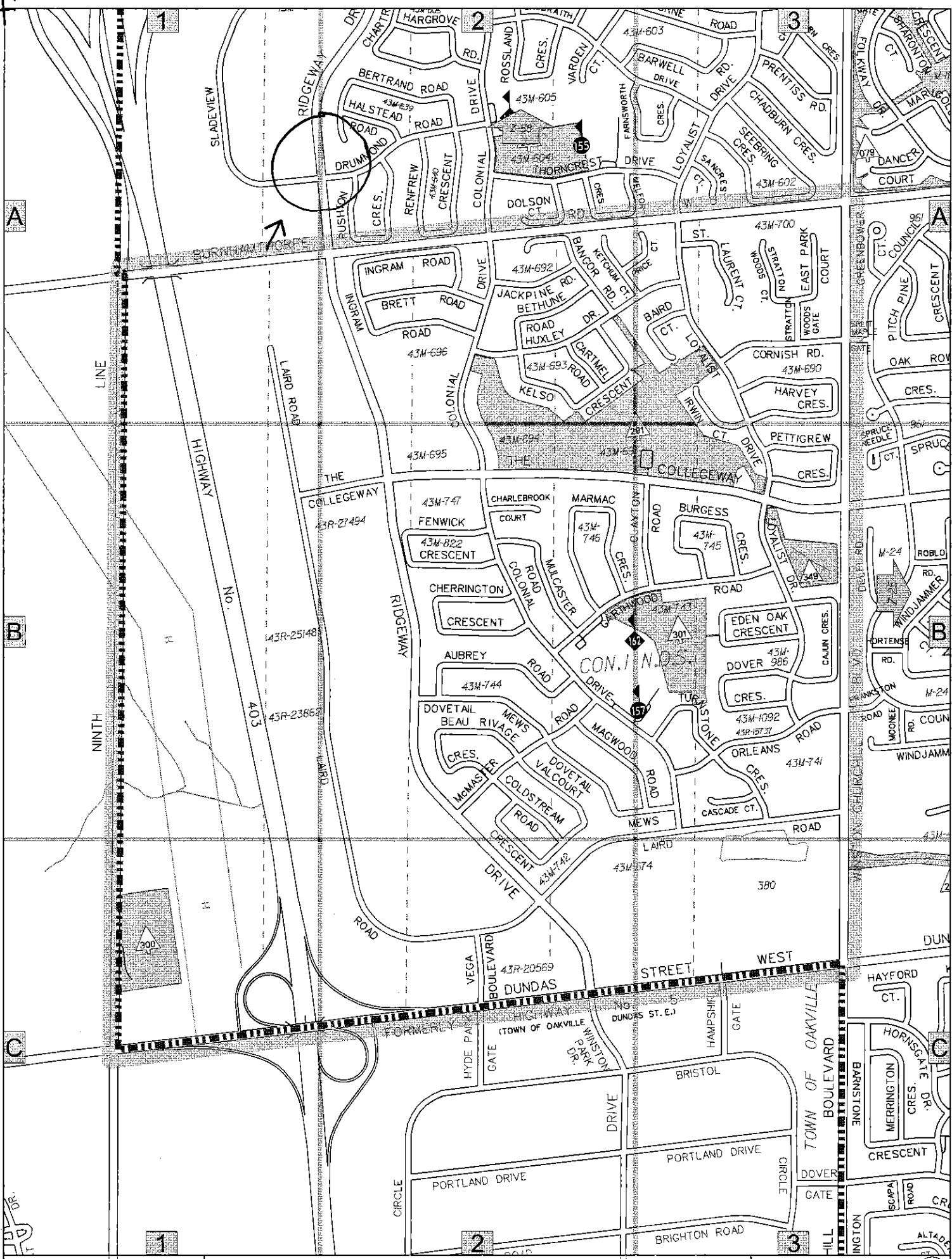
Unity ——— Drummond Road: (Through Street? In both directions) ——— Loyola



Sladeview would be a great street to move traffic away from Drummond

Another Entrance to Loyola would be ideal

This map does not show the extension built to Ridgeway.



Site Inspection Report - Traffic Safety Council

6

Traffic Safety Committee

Observers

Complete All Questions

File Number:

RT.10. Fallingbrook Middle School

File Number:

RT.10. Rick Hansen Secondary School

Ward

6

OCT 24 2012

Observed By:

D. Duess

S. Duffin

A. Liya

Date of Inspection:

2012 10 16

Inspection Time:

8:15 AM

2:45 PM

Requested By:

Resident

Prepared By:

Request For:

Pedestrian safety review

Weather Conditions: ☐ Dry ☐ Sunny ☒ Rain ☐ Snow ☐ Other:**Site**

School:

Fallingbrook Middle School

Address:

5187 Fallingbrook Dr.

School Times:

8:45

AM

2:45

PM

Student Population: 611

No. of School Buses:

School:

Rick Hansen Secondary School

Address:

1150 Dream Crest Road

School Times:

8:30

AM

3:10

PM

Student Population: 2004

No. of School Buses:

School:

Address:

School Times:

AM

PM

Student Population:

No. of School Buses:

Location: (Please identify the location with reference to nearest intersection. Indicate nearest school and address.)

Bristol Road & Kinglet Avenue/ Lismic Boulevard

Type of Crossing: ☒ 4 Way Intersection ☐ 3 Way Intersection ☐ Midblock (i.e., not at Intersection)Type of Control: ☐ Traffic Lights ☐ Yield Signs ☐ No Control☒ Stop Signs (Traffic is stopped on one street only) ☐ All Way Stop (Traffic is stopped in all directions)**Part 1 Site Conditions**

School Signs:

☐ School Area Signs☐ School crossing Signs☐ Parking/Stopping Prohibition

Posted Speed Limit:

☐ 40 km/hr☒ 50 km/hr☐ 60 km/hr☐ Other

km/hr

Visibility of Crossing Pedestrians:

☐ Poor☐ Fair☒ Good

Sight Obstructions:

☐ Hedges☐ Trees☐ Fences☐ Bus Shelter☐ Newspaper Boxes☐ Other (Specify)

Road Grade:

☒ Flat☐ Incline☐ Decline

Road Geometrics:

☒ Straight☐ Curved

Road Width: 21

☒ Feet☐ Metres

Curb to Curb:

☐ Feet☐ Metres

Curb to Median:

☐ Feet☐ Metres

Road Conditions:

☒ Dry☐ Wet☐ Snow Covered☐ Ice

Sidewalks:

☐ Not Present☒ North☒ South☒ East☒ West

Proximity to School:

☐ In Front of☒ Within 500☐ Feet☒ Metres

Route Survey:

☐ Shopping Area☐ Construction☐ Driveway☐ Other (Specify)

Road Geometrics:

☒ Transit Bus Stop☐ Underpass☐ Parked Vehicles Within☐ Feet☐ Metres

6a Warrant Survey

Check Appropriate Box For The Access Required

Location:

Bristol Road & Kinglet Avenue/ Lismic Boulevard

SAFE GAP TIME (W/3.5+4) = 24 SEC.

Morning Intervals

No. Peds.: Time: Gaps:

			# of Gaps	# of Conflicts
		No Gaps in the morning		
2	8:00-8:05			
	8:05-8:10			
1	8:10-8:15	////,////,////,////,////,////,////,////,////,////,		
3	8:15-8:20	Too Many to Count		
	8:20-8:25	////,////,////		
	8:25-8:30			
	8:30-8:35			
	8:35-8:40			
	8:40-8:45			
	8:45-8:50			
	8:50-8:55			
	8:55-9:00			

Afternoon Intervals

No. Peds.: Time: Gaps:

		No Gaps in the Afternoon		
	2:45-2:50	////,////,////,////,////,////,////,////,////,////,		
	2:50-2:55	////,		
1	2:55-3:00	////,		
1	3:00-3:05	////,		
4	3:05-3:10	////,		
	3:10-3:15	////,		
2	3:15-3:20	////,		
4	3:20-3:25	////,		
8	3:25-3:30	////,		
7	3:30-3:35	////,		
1	3:35-3:40	////,		
	3:40-3:45			

Comments/Conflicts

Students crossing at Bristol Road used Centre Turn Lane as refuste to cross Bristol Road two (2) lanes at a time. Traffic was very heavy in the morning and steady in the afternoon.

Recommendations

That the request for a Crossing Guard at the intersection of Bristol Road and Kinglet Avenue/ Lismic Boulevard for students attending Fallingbrook Middle School, 5187 Fallingbrook Drive and Rick Hansen Secondary School, 1150 Dream Crest Road, be denied as students crossing at this intersection are in grades six (6) to twelve (12) and the Traffic Safety in School Zones Corporate policy allows Traffic Safety Council to recommend the placement of Crossing Guards for students in kindergarten to grade five (5). 2. That the Principals of Fallingbrook Middle School and Rick Hansen Secondary School be requested to direct students to cross Bristol Road on the west side of the intersection in the morning to avoid most of the turning traffic onto and from Lismic Boulevard. 3. That the Transportation and Works Department be requested to review the feasibility of installing a traffic control signal at the intersection of Bristol Road and Kinglet Avenue/ Lismic Boulevard. 4. That the Site Inspection Subcommittee of Traffic Safety Council be requested to re-inspect the intersection of Bristol Road and Kinglet Avenue/ Lismic Boulevard to review pedestrian safety once Bristol Road is reconfigured from four (4) lanes, a centre turn lane and bike lanes to a narrower four (4) lane road with no centre lane and wider bike lanes.

Observations

A) Volume of Traffic: (See Intersection Plan)

B) Number of Crossing Pedestrians

☒ Heavy ☐ Light ☐ Intermittent

6 AM 28 PM

Laura Wilson

From: [REDACTED]
Sent: 2012/09/07 12:40 AM
To: Laura Wilson
Subject: RE: Request for site inspection

Thank you very much for your response Laura.

Will be looking forward to hearing from you again. I forgot to include my phone # [REDACTED]

Thanks again

From: Laura.Wilson@mississauga.ca
To: [REDACTED]
Date: Thu, 6 Sep 2012 09:00:47 -0400
Subject: RE: Request for site inspection

Hello [REDACTED]

Thank you for bringing this to our attention.

I will put your email on the Traffic Safety Council agenda for the committee's review at their meeting on September 26, 2012.

Please be advised that as per the City of Mississauga's policy regarding Traffic Safety in School Zones (please see attached), Traffic Safety Council can request the placement of a Crossing Guard for students in Kindergarten to Grade 5. Exceptions can be made and temporary Crossing Guards can be requested for students in Grade 6 to 8 only if there is construction in the area. Therefore, Traffic Safety Council will be unable to place a Crossing Guard as per your request, however, the committee can decide to take other action and I will advise as to their direction.

If you are interested in more information with respect to Crossing Guards and their placement, please contact Sheelagh Duffin, Crossing Guard Supervisor at 905-896-5167 or via email at sheelagh.duffin@mississauga.ca.

Thank you again,

Laura Wilson
Legislative Coordinator
The City of Mississauga
Legislative Services, Office of the City Clerk
<http://www.mississauga.ca/portal/cityhall/officeofthecityclerk>

From: Sacha Smith **On Behalf Of** Traffic Safety
Sent: 2012/09/05 3:52 PM
To: Laura Wilson
Subject: FW: Request for site inspection

6c

From: [REDACTED]
Sent: 2012/09/04 11:16 PM
To: Traffic Safety
Subject: Request for site inspection

I am hereby requesting a site inspection for a crossing guard at the Kinglet and Bristol Rd intersection in Mississauga. Most of the kids that live on the north side of Bristol that attend Fallingbrook PS and Rick Hansen Secondary normally walk across Bristol Road at Kinglet/Lismic to get to school and since there are no traffic lights there it has become very dangerous especially with kids from nearby high schools sometimes drag racing on their way from school. My son was almost run over last year by a car trying to make a left turn on Kinglet and it is only a matter of time before something bad happens. I sincerely hope that you would consider my request, this is the first time I have taken the time to write about anything so needless to say I feel very strongly about it.

Thank You

[REDACTED]



7 Site Inspection Report - Traffic Safety Council

Observers

Complete All Questions

File Number:

RT.10. St. Francis of Assisi Catholic

File Number:

RT.10. Sheridan Park Public School

Ward

2

Traffic Safety Committee

OCT 24 2012

Observed By:

P. Westbrook

A. Liya

B. Swedak (PM)

D. Suess

S. Duffin

Date of Inspection:

2012 10 17

Inspection Time:

8:00 AM

3:00 PM

Requested By:

Principal

Prepared By:

Request For:

Placement of Crossing Guard

Weather Conditions: ☐ Dry ☐ Sunny ☐ Rain ☐ Snow ☒ Other: Dry (8:02) Rain (8:15) Sunny (PM)

Site

School:

St. Francis of Assisi Catholic

Address:

2480 Thorn Lodge Drive

School Times:

8:30

AM 3:00

PM

Student Population: 525

No. of School Buses:

School:

Sheridan Park Public School

Address:

2280 Perran Drive

School Times:

9:00

AM 3:30

PM

Student Population: 583

No. of School Buses:

School:

Address:

School Times:

AM

PM

Student Population:

No. of School Buses:

Location: (Please identify the location with reference to nearest intersection. Indicate nearest school and address.)

Sheridan Park Drive and Homelands Drive

Type of Crossing: ☒ 4 Way Intersection ☐ 3 Way Intersection ☐ Midblock (i.e., not at Intersection)

Type of Control: ☐ Traffic Lights ☐ Yield Signs ☐ No Control

☐ Stop Signs (Traffic is stopped on one street only) ☒ All Way Stop (Traffic is stopped in all directions)

Part 1 Site Conditions

School Signs:

☐ School Area Signs

☐ School crossing Signs

☐ Parking/Stopping Prohibition

Posted Speed Limit:

☐ 40 km/hr

☐ 50 km/hr

☐ 60 km/hr

☐ Other

km/hr

Visibility of Crossing Pedestrians: ☐ Poor

☐ Fair

☒ Good

Sight Obstructions:

☐ Hedges

☐ Trees

☐ Fences

☐ Bus Shelter

☐ Newspaper Boxes

☐ Other (Specify)

Road Grade:

☒ Flat

☐ Incline

☐ Decline

Road Geometrics:

☐ Straight

☒ Curved

Road Width: 30

☒ Feet

☐ Metres

Curb to Curb:

☐ Feet

☐ Metres

Curb to Median:

☐ Feet

☐ Metres

Road Conditions:

☐ Dry

☐ Wet

☐ Snow Covered

☐ Ice

Sidewalks:

☐ Not Present

☒ North

☒ South

☒ East

☒ West

Proximity to School:

☐ In Front of

☐ Within

☐ Feet ☐ Metres

Route Survey:

☐ Shopping Area

☐ Construction

☐ Driveway

☐ Other (Specify)

Road Geometrics:

☐ Transit Bus Stop

☐ Underpass

☐ Parked Vehicles Within

☐ Feet

☐ Metres

Warrant Survey

Check Appropriate Box For The Access Required

Location:

7a

Sheridan Park Drive and Homelands Drive

SAFE GAP TIME (W/3.5+4) = 13 SEC.

Morning Intervals

No.
Peds.: Time: Gaps:

			# of Gaps	# of Conflicts
		South		
2	8:00-8:05	////,////14////,//15////,//38/16////,////,////,////		
	8:05-8:10	////,////,////,////,////,////,//22//38//		
	8:10-8:15	///17////,//24//31////24//17,14////,/		
	8:15-8:20	//24,18,22////,////,13////,////,////,////,////14		
	8:20-8:25	15//15 (////x9)		
	8:25-8:30	(//// x13)		
	8:30-8:35	(////x13)		
	8:35-8:40	(////x10),//15////,////		
	8:40-8:45	(//// x12), 17		
	8:45-8:50	////16,18////,////,////,////,////,////34////13/		
	8:50-8:55	15//19////,///18////13////,////,////,////,///21,13///		
	8:55-9:00	///,22,18,17//17,41,16////,//17////,////		

Afternoon Intervals

No./
Peds.: Time: Gaps:
South

	3:00-3:05	/14,20,28/32/15,17/49,35		
	3:05-3:10	//33,27,23/29/19////,18////,/20,14/		
	3:10-3:15	/23////20,19/75////40//		
	3:15-3:20	18,20//49/13////,////,//55////,//		
1	3:20-3:25	22/15,22/21//19,32////,///17//		
1	3:25-3:30	/16//21,35//34/19////20////23///		
	3:30-3:35	////,////,////,////,////,////,////,////,////		
	3:35-3:40	//// x12		
	3:40-3:45	////,////,////,////,////22////,////,////,////22////,		
	3:45-3:50	////,/20//20//28////,//22,13//,//,////		
	3:50-3:55	////,////,////,////,////,///23///13		
	3:55-4:00	/32////21////,////,/25////		

Comments/Conflicts

Stopping compliance was good. No conflicts were observed. Traffic was very light on the west side of the intersection.

Recommendations

That the request for a Crossing Guard at the intersection of Sheridan Park Drive and Homelands Drive for students attending St. Francis of Assisi Catholic School, 2480 Thorn Lodge Drive and Sheridan Park Drive, 2280 Perran Drive be denied as the warrants have not been met and the All Way Stop provides protection for students crossing.

Observations

A) Volume of Traffic: (See Intersection Plan)

B) Number of Crossing Pedestrians

☒ Heavy ☐ Light ☒ Intermittent

2 AM 2 PM

Warrant Survey

Check Appropriate Box For The Access Required

Location: **7b**

Sheridan Park Drive and Homelands Drive

SAFE GAP TIME (W/3.5+4) = **13** SEC.

Morning Intervals

No.
Peds.: Time: Gaps:

	West	# of Gaps	# of Conflicts
8:00-8:05	////,/	6	
8:05-8:10	////	3	
8:10-8:15	////,/	6	
8:15-8:20	/	5	
8:20-8:25	//	2	
8:25-8:30	////,//		
8:30-8:35	/		
8:35-8:40	/	1	
8:40-8:45	///	1	
8:45-8:50	////	5	
8:50-8:55	////,/	6	
8:55-9:00	/,////,//	7	

Afternoon Intervals

No./
Peds.: Time: Gaps:
South

3:00-3:05	///	13	
3:05-3:10	/	3	
3:10-3:15	//	2	
3:15-3:20		10	
3:20-3:25	/	8	
3:25-3:30	/	8	
3:30-3:35			
3:35-3:40			
3:40-3:45		3	
3:45-3:50	/	7	
3:50-3:55	////	2	
3:55-4:00	///	4	

Comments/Conflicts

See Site Inspection Report for the south leg of the intersection

Recommendations

See Site Inspection Report for the south leg of the intersection

Observations

A) Volume of Traffic: (See Intersection Plan)

B) Number of Crossing Pedestrians

☒ Heavy ☐ Light ☒ Intermittent

AM

PM

7d

Laura Wilson

From: Sacha Smith on behalf of Traffic Safety
Sent: 2012/09/10 10:20 AM
To: Laura Wilson
Subject: FW: Crossing Guard Requests

Follow Up Flag: Follow up
Flag Status: Flagged

From: Poerba, Natalie [mailto:Natalie.Poerba@dpcdsb.org]
Sent: 2012/09/06 3:54 PM
To: Traffic Safety
Subject: Crossing Guard Requests

Name: *Natalie Poerba – Vice Principal*

Request: *Parent request for crossing guards at Sheridan Park Drive and Fifth Line & Sheridan Park Drive and Homeland as a number of students are now crossing these streets as they are no longer eligible for bussing. Parent is concerned about the safety of children crossing these intersections on their own.*

School: *St. Francis of Assisi*

Address: *2480 Thorn Lodge Drive, Mississauga, Ontario*

Phone Number: *905-822-3183*

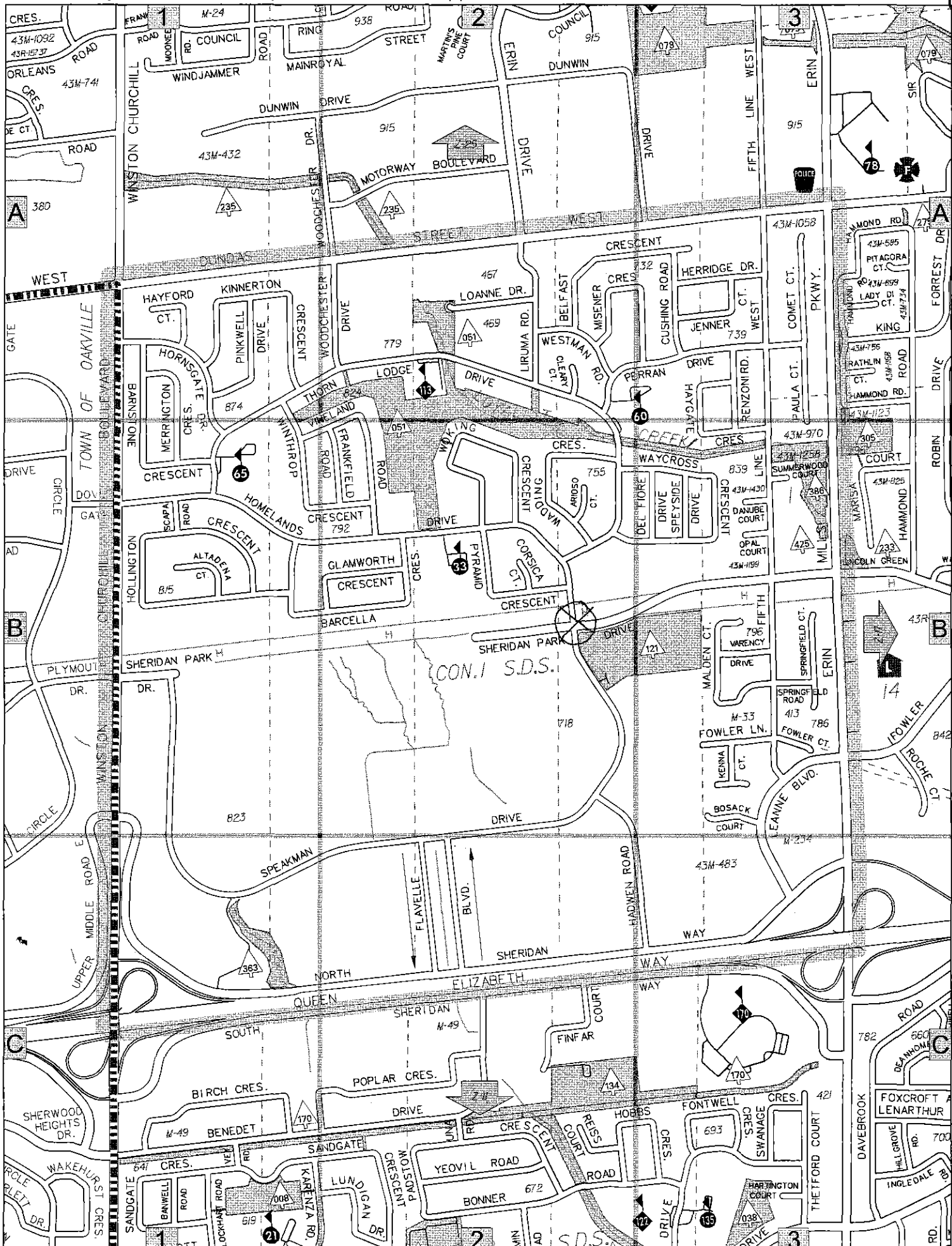
Thank you,

Natalie Poerba
Vice Principal
St. Francis of Assisi
905-822-3183 ext. 49602

Confidentiality Notice:

This E-mail (and attached material) is intended for the use of the individual or institution to which it is addressed and may not be distributed, copied or disclosed to other unauthorized persons. This material may contain confidential or personal information that may be subject to the provisions of the Municipal Freedom of Information and Protection of Privacy Act. If you receive this transmission in error, please notify the sender immediately and do not print, copy, distribute or disclose it further, and delete this message from your computer.

 Please consider the environment before printing this email.



Laura Wilson

From: Laura Wilson
Sent: 2012/10/03 12:28 PM
To: 'Fujiwara, Carolyn'
Cc: Teti, Nick
Subject: RE: Crossing Guards & site inspection

Traffic Safety Committee

OCT 24 2012

Hello Ms. Fujiwara,

I will gladly put your request on the Traffic Safety Council Agenda for October 24. The committee will review your request and I will advise as to their recommendation.

Thank you.

Sincerely,

Laura Wilson
 Legislative Coordinator
 The City of Mississauga
 Legislative Services, Office of the City Clerk
 905-615-3200 ext. 5425
<http://www.mississauga.ca/portal/cityhall/officeofthecityclerk>

From: Fujiwara, Carolyn [mailto:Carolyn.Fujiwara@dpcdsb.org]
Sent: 2012/10/01 4:57 PM
To: Laura Wilson
Cc: Teti, Nick
Subject: re: Crossing Guards & site inspection
Importance: High

Greetings Laura,

Many thanks for the time and information you shared regarding crossing guard process earlier today. As shared with you, our school holds close to 700 student, with six full day kindergarten classes (180 students). This is a very large elementary school with currently no crossing guards. The following are the intersections of concern in the St. Bernard of Clairvaux Community:

Tenth Line and Tacc Dr.(North)
 Escada and Tenth Line
 Escada and Churchill Meadows (at roundabout)
 School Exit onto Escada Dr

It would be greatly appreciated if these concerns could be brought forward to your Traffic Safety Council for review and then a gap study and site inspection of this area. I look forward to your response and the Traffic Safety Council's response in this effort to provide a safe environment for the students of St. Bernard of Clairvaux.

Sincerely,
 Carly

Carly Fujiwara
 V.P.

St. Bernard of Clairvaux School

Laura Wilson

From: Laura Wilson
Sent: 2012/10/03 12:33 PM
To: 'Fujiwara, Carolyn'
Subject: Traffic Safety In School Zones Corporate Policy
Attachments: Traffic Safety in School Zones Corporate Policy.pdf

Hello Ms. Fujiwara,

I forgot to attach to my previous email the City of Mississauga's Corporate Policy regarding Traffic Safety in School Zones which outlines when Traffic Safety Council can recommend the placement of a Crossing Guard. If you have any questions with respect to the warrants for placing a guard, please contact Sheelagh Duffin, Crossing Guard Supervisor at 905-896-5167 or via email at Sheelagh.Duffin@mississauga.ca.

Sincerely,

Laura Wilson
Legislative Coordinator
The City of Mississauga
Legislative Services, Office of the City Clerk
905-615-3200 ext. 5425
<http://www.mississauga.ca/portal/cityhall/officeofthecityclerk>

8b

Laura Wilson

From: Laura Wilson
Sent: 2012/10/03 12:49 PM
To: [REDACTED]
Subject: RE: Traffic Safety Council
Attachments: Traffic Safety in School Zones Corporate Policy.pdf; Stakeholders Responsibilities Breakdown - Adopted October 2011.pdf

Hello,

Thank you for bringing these concerns to Traffic Safety Council's attention.

I will place your email on the Traffic Safety Council's meeting agenda for October 24 and the committee will review your request for a Crossing Guard at the intersection of Escada Drive and Tenth Line. I will advise as to their recommendation.

With respect to your concerns regarding distance, I have attached a document called the Stakeholder's Responsibilities Breakdown which identifies the organizations that deal with each issue relating to traffic safety in school zones for your review. As indicated on the Stakeholder's Responsibilities breakdown, any issues with respect to bussing distance criteria policy can be directed to the Dufferin- Peel Catholic District School Board's Board of Trustees at 905-890-1221. Additionally, I have attached the City of Mississauga's Corporate Policy regarding Traffic Safety in School Zones which outlines when Traffic Safety Council can recommend the placement of a Crossing Guard.

If you have any questions regarding Traffic Safety Council please do not hesitate to contact me. If you require further information regarding the warrants for placing a Crossing Guard, please contact Sheelagh Duffin, Crossing Guard Supervisor at 905-896-5167 or via email at Sheelagh.Duffin@mississauga.ca.

Thank you again for bringing these concerns to the committee's attention.

Sincerely,

Laura Wilson
Legislative Coordinator
The City of Mississauga
Legislative Services, Office of the City Clerk
905-615-3200 ext. 5425
<http://www.mississauga.ca/portal/cityhall/officeofthecityclerk>

From: Mark and Eliza [REDACTED]
Sent: 2012/10/03 9:02 AM
To: Laura Wilson
Cc: Sue McFadden
Subject: Traffic Safety Council

Good day Laura, thanks for taking my call the other day.

My name is Mark Azzarello and I have two children that attend Saint Bernard of Clarivaux Catholic Elementary School. They are in grade one and grade four and are not eligible for busing. I had appealed this eligibility decision last year with STOPR and was never given a satisfactory response as my children were ultimately

afforded courtesy seating. Because they received courtesy seats my inquiry did not receive a fulsome review. I am again in the same predicament this year, except that only one of my children were selected for the courtesy seating. The basis of my appeal is that incorrect measurement data is being used to determine the distance between my house and the school. The Geo Query system that is being used by STOPR to determine these distances states that my residence is 0.98 km from the school. I have physically measured this route and it is clearly over the 1 km eligibility threshold (property line to property line). They are supporting and standing firm on the distance that their system has provided, yet have acknowledged there is an inherent variance to the system's final calculations....this is very frustrating.

Furthermore, upon exploring the manner in which these distances are determined it became evident that this organization does not consult with the recommendations of the Traffic Safety Council regarding the safe walking route a child should be walking to school. In my children's case, they are being expected to cross Tenth Line during extremely busy times of the day without a crossing guard. There is a crossing guard in the area, but the guard is located three streets south of the school and primarily services two nearby public schools. The use of this existing safe crossing would add an additional 0.7 km to my children's walk to and from the school.

In an effort to provide my children with a safe walking route to their school, I would like to request that a crossing guard be assigned to the intersection at Escada Drive and Tenth Line.

In addition to this, as a concerned resident, I would be remiss if I didn't recommend that a review of the current practices be undertaken to ensure STOPR calculates distances that are in accordance with the Traffic Safety Council findings. The current manner in which this program is being delivered is not only irresponsible, but it also jeopardizes the ability of all interested parties in achieving their mandates related to the safety of the children in our communities. I ask that this be added to the agenda for the next meeting date of October 24th, 2012.

Please advise if further information is required.

Thank you in advance for your consideration to this matter,

Mark Azzarello

[REDACTED]

[REDACTED]

[REDACTED]

home: [REDACTED]

mobile: [REDACTED]

9

Laura Wilson

From: Andy Bate
Sent: 2012/10/03 9:33 AM
To: Laura Wilson
Cc: Denna Yaunan; Jim Tovey
Subject: FW: Councillor Tovey Request: Riverside Public School

Traffic Safety Committee

OCT 24 2012

Hi Laura,

Can you please add this to the TSC site inspection schedule.

Thanks....Andy

From: Parking Enforcement
Sent: 2012/10/03 9:29 AM
To: [REDACTED]
Cc: Andy Bate; Jim Tovey
Subject: RE: Councillor Tovey Request: Riverside Public School

Thank you for your e-mail regarding the removal and changes to the parking signs posted on the street at Riverside Public School. Please be advised that I have forwarded your e-mail to the Supervisor of Traffic Operations for his review and response to you.

Irene Runtic
Bilingual Customer Inquiries Clerk
enforcement.parking@mississauga.ca

From: [REDACTED]
Sent: 2012/09/07 11:08 AM
To: Jim Tovey
Cc: Lynn Judge
Subject: RE: Riverside Public School

Mr. Tovey:

Last year, you came out to see us at Riverside regarding our parking issues.

I did receive a reply that it would be looked into by the appropriate people at the city level. However, to this date, nothing has been done and I have not been contacted since the first e-mail was sent.

I was extremely busy at the school last year and since no tickets were issued I did not continue to follow up with the problem.

Yesterday, four tickets, each in the amount of \$55.00 were issued to parents. When we met last fall, we discussed how the parking enforcement officials take a lot of heat from parents when they issue the tickets. When I arrived at the school the tickets had already been issued and the situation did indeed escalate. I spoke to the parking official and tried to keep the peace between parents and the gentleman doing his job.

With this said, I do not feel comfortable doing this nor do I wish anything unpleasant to happen. Could you look into this matter again from me as I would like to see this problem dealt with as soon as possible. It has currently been over six years that we have been trying to get these signs removed.

9a

I appreciate you taking the time to deal with this matter. You can reach me by e-mail or by phone at 905-271-1376. If you wish to speak to our Principal, Paul Officer, his number at the school is 905-274-1515.

Thank you.

Thank you Linda. Please be advised I have forwarded your email to the appropriate city staff members and someone should be in contact with you. Should you not hear back within a week please contact Councillor Tovey and his EA Lynn Jude (lynn.judge@mississauga.ca). Thank you again for writing.

Regards,

"Visit the Office of the Clerk's page on the City of Mississauga's website to access agendas, minutes, the Council and Committees calendar, and much more!"
<http://www.mississauga.ca/portal/cityhall/officeofthecityclerk>

Thanks for the quick response to this issue.

Please forward our concerns to the appropriate people. We would like this matter looked after as quickly as possible.

I can be reached at this e-mail - [REDACTED] or my home number is [REDACTED] As well, the school telephone number is [REDACTED]

9b

Please let them know contact me if they require any additional information.

From: Jim.Tovey@mississauga.ca

To: [REDACTED]

CC: [REDACTED]

Date: Tue, 29 Nov 2011 08:56:03 -0500

Subject: RE: Riverside Public School

Good Morning Linda,

Thank you for your email to Councillor Tovey regarding the parking signs at Riverside Public School. We appreciate the time you have taken to write. We would like to share your email with the appropriate city staff members so that they may look into this further. Can you please grant our office permission to share this email as well can you please provide your contact information so that they may contact you directly. Once again, thank you for taking the time to write.

Regards,

Ashley DiProspero

Administrative Assistant

to Councillor Jim Tovey, Ward 1

City of Mississauga

300 City Centre Drive

Mississauga, Ontario L5B 3C1

905-896-5085

ashley.diprospero@mississauga.ca

Visit the Ward 1 Community Website: www.jimtovey.ca

Follow Councillor Tovey on Facebook: <http://www.facebook.com/#!/profile.php?id=100000463471665>

"Visit the Office of the Clerk's page on the City of Mississauga's website to access agendas, minutes, the Council and Committees calendar, and much more!"

<http://www.mississauga.ca/portal/cityhall/officeofthecityclerk>



This e-mail may not be forwarded to anyone for any reason without express written permission of the author.

From: [REDACTED]

Sent: 2011/11/28 10:49 AM

To: Jim Tovey

Cc: [REDACTED]

Subject: Riverside Public School

Good Morning Mr. Tovey:

[REDACTED] met with you in September regarding parking issue around the school. There are signs that state that it is a school bus loading zone and that there is to be no parking between the hours of 8-9 a.m. and 3-4 p.m.

9c

As well, there were 15 hr parking signs.

This morning two men from the City arrived to take down signs. Unfortunately, their work order instructed them to take down the 15 hr parking signs and leave the no parking during the hours listed above.

This does not help our parking problem and will probably cause some issues with the residents in the apartments nearby.

We needed the correct signs removed as these are the times that parents drop off and pick up their children. With these signs still in place, it is illegal to park on the street. With the colder weather here, more and more parents opt to drive to the school rather than walk or bike.

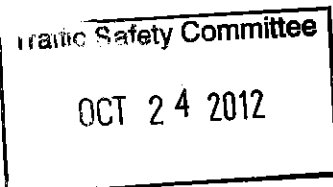
Could you please look into this as soon as possible. I will be at the school today just after 3 p.m. as it is likely that parking control will be by to hand out tickets.

Also, could you look into why the 15 hr parking signs were removed. It was not our intention to take away any of the privileges that the residents in the apartments had.

If you need to speak to our principal, Mr. Paul Officer, you can reach him at 905-274-1515.

Thank you.


Riverside School Council

Dismissal Report – September to October 2012**Attended by: Boris Swedak****November 28, 2012****St. Teresa of Avila, Ward 9****School Grades:** Junior Kindergarten to Grade 8**Dismissal Time:** 3:00 p.m.**Weather:** Sunny, 18 Degrees Celsius**Adjacent to Park:** Yes**Public Transit:** Yes, but does not impact on Dismissal**School Transport:** 1 full size bus, 2 mini vans**Signs & Pavement Marking:** well marked and visible on school property**Parent Behaviour:** Very good

Parking: Two areas are assigned for parking on school property. There is one small pod consisting of three rows of parking in front of school and three additional rows of parking on the south side of school just off the entrance. There is also parking on the east side of Montevideo Road.

Kiss n' Ride: There is a two lane layout driveway totally separated from the bus parking located in front of the school, just east of the exit drive.

Comments:

The school implemented full day kindergarten classes in the fall of 2012 which has created a learning opportunity for parents utilizing the School Zone Safety (Kiss and Ride) during the morning arrival and afternoon dismissal periods. Arrival and dismissal procedures have improved since the beginning of the year.

Spoke to the Vice- Principal, Ms. Carpe and she was not overly concerned about the morning or afternoon drop off or pick up. Many students were observed walking home from St. Teresa of Avila Catholic School. Staff assist with bus loading and marshalling of students on school internal walkways. No conflicts were observed. This is a very quite residential school site with an orderly dismissal period.

Recommendation:

That Parking Enforcement be requested to enforce parking infractions along Montevideo Road in the vicinity of St. Teresa of Avila Catholic School, 6675 Montevideo Road, between 2:50 p.m. and 3:10 p.m.

October 1, 2012**St. Joan of Arc Catholic Secondary School, Ward 10**

Grades: 9 - 12

Weather: Overcast, 19 Degrees Celsius

Adjacent to Park: Yes

Public Transit: Yes, but it does not impact on Dismissal

School Transport: Two full size buses, three cube Vans, two mini vans

Parent Behaviour: Good

Parking: 4 long rows in the south lot, 4 additional very long rows in the north lot shared with the local area Library. Parking on the north side of Thomas St. and east side of Churchill Meadows

Kiss'n Ride: Not defined as such

Signs: In place on all right of ways and internal school property.

Comments:

This is a relatively new school site sited on a large parcel of land with adequate parking. Many walkers were observed walking home. No conflicts were observed. Staff volunteers assist with bus loading and monitoring on school grounds.

The Principal previously spoke to Dale Lucas to investigate altering the east drive access to provide for a no left turn restriction on Thomas Street while retaining the access off of Churchill Meadows Boulevard as a two way system serving the school, community centre and library. This has now been put in place and the change has decreased traffic congestion on Thomas Street at this location. The Principal is content with the changes.

Dismissal works relatively well at this school.

Recommendation:

That Parking Enforcement be requested to enforce parking infractions along Thomas Street and Churchill Meadows Boulevard in the vicinity of St. Joan of Arc Catholic Secondary School, 3801 Thomas Street, between 2:15 p.m. and 2:40 p.m.

October 2, 2012**St. David of Wales Catholic School, Ward 6****Weather:** Sunny, 18 Degrees Celsius**Adjacent to Park:** Yes**Public Transit:** Yes**School Transport:** One full size bus, one cube van**Parent Behaviour:** Good

Parking: There is an exclusive row of parking for staff along the south property boundary adjacent to the school building, two long lanes straddling the southerly exit driveway to Rathburn Road on the west side of Beacon Lane, eight lanes of parking on the south east side of the front driveway.

Kiss n' Ride: Yes, the short length of standard 3 lane one way layout with an exclusive bus lane adjacent to curb

Signs: All in place on both the roadway and school

Comments:

Road resurfacing works underway in Rathburn Road adjacent to the school site which greatly slows down traffic. Many walkers were observed and no conflicts were observed. 40 kilometre flashing signs are in place and active on Rathburn Road adjacent to the school. Teachers walk kindergarten students to the cube vans and staff wearing vests assist students during the dismissal period. Parking violations in front of school were noted. Dismissal works well at St. David of Wales. Maze gates were installed at the park adjacent to school as per Traffic Safety Council's recommendation.

The Principal raised a concern regarding the cut through traffic from Beacon Lane to Rathburn Road and perhaps oversized School Traffic Only signs might be installed on both sides of the driveway. School Staff might also monitor cars entering the school site during morning drop off and afternoon dismissal periods to ensure that traffic is related to the school although this would only

address the issue during the arrival and dismissal times. There are no measures that the City of Mississauga might implement on Private Property to eliminate this cut through traffic concern.

Recommendation:

1. That Parking Enforcement be requested to enforce parking infractions on Beacon Lane and Rathburn Road, in the vicinity of St. David of Wales Catholic School, 4200 Beacon Lane between 3:00 p.m. and 3:20 p.m.
2. That the Dufferin- Peel Catholic District School Board be requested to review the feasibility of installing oversized School Traffic Only signs at St. David of Wales Catholic School, on each side of the driveway entrance on Beacon Lane.

October 3, 2012

Dolphin Senior Public School, Ward 11

Weather: Overcast/ drizzle, 18 Degrees Celsius

Adjacent to Park: Yes

Public Transit: No

School Transport: Eight (8) full size buses, three (3) cube van

Parent Behaviour: Good

Parking: Four (4) medium rows on the school lot, additional limited parking on Brookside Drive

Kiss n' Ride: Not marked as such

Signs: Signage needs be reviewed by D. Marcotte and TSC members

Comments:

Dolphin Senior Public School is located at the south end of a residential street with access from the cul-de-sac at the terminal end. There was a very low volume of traffic on Brookside Drive. Parents park on Brookside Drive and cause congestion during the afternoon dismissal period. I spoke to Principal Kahan regarding her concerns with respect to the morning drop off and afternoon Dismissal Period. She indicated that there is congestion within the parking lot and on Brookside Drive during the Dismissal Period. Forty (40) staff fill the parking lot almost to capacity leaving few stalls available for parents.

It is recommended that these urgent matters be considered by Dave Marcotte, Supervisor, Preventative Maintenance, Peel District School Board:

1. Define a two lane, one way driveway.
2. Paint an exclusive bus lane adjacent to curb.
3. Install Fire Route and No Parking signs along entire driveway.
4. Repaint the entire parking lot delineating individual parking stalls.
5. Paint one way directional arrows on driveway pavement.

Volunteers wearing vests assist with the monitoring of students on the school site and the bus loading operation.

No conflicts observed during this inspection.

Many students were observed walking from this site. Three (3) cube vans wait at the top of lot prior to Dismissal causing minor congestion. Students were well behaved and used side walks to access the waiting buses. Dismissal works relatively well at this school mainly due to location of school, good conduct of the students and the staff managing the Dismissal procedure.

Recommendation:

1. That the Peel District School Board and Representatives from Traffic Safety Council be requested to review the configuration of the parking lot and driveway at Dolphin Senior Public School, 18 Brookside Drive, at the next Peel Board Maintenance Meeting on October 23, 2012.
2. That the Transportation and Works Department review the signage at the intersection of Brookside Drive and Britannia Road.

October 5, 2012

Canadian Martyrs Catholic School, Ward 4

Weather: Cloudy, 17 Degrees Celcius

Adjacent to Park: Yes

Public Transit: Yes, but no impact on school dismissal

School Transportation: Two (2) full sized busses one (1) mini bus, two (2) cube vans

Parent Behaviour: Acceptable

Parking: There is a main lot on the east side of the school that consists of three (3) lanes of parking, additional parking is at right angles to the entry driveway, parents also store in the Kiss and Ride lane behind the first row of parked vehicles.

Kiss and Ride: Yes with a bus loading zone adjacent to the curb in front of the school. It is marked as a two (2) lane layout however, through traffic is between the marked Kiss and Ride lane and illegally parked cars.

Signs: Adequate

Comments:

The Principal raised a concern with respect to congestion on the school site. There was a high volume of vehicles on site. Three (3) staff wearing vests monitor students and vehicles on school property and they bring order by directing traffic flow. The pavement paint is faded and could be refreshed. The general layout of the school is good the location of the bus lane and Kiss and Ride are appropriate and parking is adequate. Suggest that the Dufferin- Peel District School Board consider painting through lanes adjacent to the Kiss and Ride lane so that motorists would have a second storage lane during dismissal. This could be done by shifting the two existing lanes.

The Principal should encourage more students to walk to school and the school could be considered for the School Walking Routes Program. A high volume of students were observed walking home and no conflicts were observed.

Recommendation:

1. That the Dufferin- Peel Catholic District School Board be requested to review the feasibility of doing the following at Canadian Martyrs Catholic School, 1185 Mississauga Valley Boulevard:
 - a. Repaint the pavement markings on the parking lot and School Zone Safety (Kiss and Ride).
 - b. Re-configure the School Zone Safety (Kiss and Ride) to a three (3) lane layout with two lanes to be used as a storage lanes and one lane to be used as a through lane during the Dismissal Period.
2. That Parking Enforcement be requested to enforce parking infractions along Mississauga Valley Boulevard in the vicinity of Canadian Martyrs Catholic School between 2:50 p.m. and 3:15 p.m.

October 9, 2012

Erin Mills Senior Public School, Ward 8

Weather: Sun cloud mix, 15 degrees Celsius

Adjacent to Park: Yes

Public Transit: No

School Transport: Two (2) full size buses, 4 cube Vans

Parent Behaviour: Good

Parking: One long row of single stalls along the North side of property, 7 spaces on South side of drive at entry to school, both sides of South Common Court.

Kiss n' Ride: Yes, a single lane adjacent to curb marked as bus lane, drive is a 2 lane layout with a turn circle at extreme westerly limit of property.

Signs: In Place and adequate for this site and right of way

Comments:

The former Loyola Catholic Secondary School site is to the north and is now being used as an adult education centre with approximately fifty (50) students enrolled and therefore this site no longer causes a traffic concern on Burnhamthorpe Road. Full size bus loading zone is on the street and appropriate signs define area. Large buses are unable to use the driveway. A review of the driveway layout is suggested at the next Peel Board Maintenance meeting on October 23, 2012. Many walkers were observed most of whom proceeded south through park. No conflicts were observed during this inspection. School staff monitor the dismissal program and assist with bus loading. The school is situated on a "No Exit" street with minimal traffic other than school staff and parents and there is minimal congestion during the Dismissal Period. Dismissal works relatively well at Erin Mills Senior Public School.

Recommendation:

That the Peel District School Board and Representatives from Traffic Safety Council be requested to consider the driveway layout at Erin Mills Senior Public School, 3546 South Common Court at the next Peel Board Maintenance Meeting, to review the feasibility of accommodating bus loading and unloading on school property.

October 15, 2012

Marvin Heights Public School, Ward 5

Weather: Sun/cloud mix, 9 Degrees Celsius

Adjacent to Park: Yes

Public Transit: Yes ,but no impact on the Dismissal period

School Transportation: One (1) cube van and four (4) full size buses

Parent Behavior: Good

Parking: Three (3) rows of angle parking are in front of school and two (2) lanes are contained in a curbed area just west of main driveway. All lanes are configured in a herring bone layout, on the east side of Redstone Road, on adjacent side streets and on the 2 lane drive adjacent to curb in front of bus lane designation.

Kissn' Ride Lane: Yes, there is a two (2) lane driveway with an exclusive bus lane painted adjacent to curb. A parent drop off and pick up area is designated beyond the bus area further along drive.

Signs: Are in place and well marked on both roadway allowance and school grounds

Comments:

Student enrolment is down slightly this term. Many students were observed walking home from the school. Volunteers and staff assist with bus loading and traffic monitoring. This is an older school in a residential enclave. No conflicts observed this inspection. The pavement markings are visible and there is a newly oriented Kiss and Ride located at the northerly end of property separate from the bus storage area.

The Dismissal Period appears to be working well at this time due mainly due to the efforts of school staff and volunteers.

Recommendation:

That Parking Enforcement be requested to enforce parking infractions along Redstone Road in the vicinity of Marvin Heights Public School, 7455 Redstone Road, between 3:20 p.m. and 3:45 p.m.

10h

Laura Wilson

From:
Sent:
To:
Subject:

St. Teresa of Avila Dismissal Report

Address 6675 Montevideo Rd

School ID # 142

Phone: [905] 858- 3462

School Grades JK – 8

Zone Z46 W

Date of Inspection –November 28th.,2012

Dismissal Time 3:00 PM

Weather -Sunny, 18 deg. C.

Adjacent to Park - Yes

Public Transit -Yes , but does not impact on Dismissal

School Transport – 1 full size bus , 2 dodge caravans

Signs & Pavement Marking - well marked and very visible on school property

Parent Behavior Very good

Parking - 2 areas assigned for parking on school property, small pod consisting of 3 rows in front of school, 3 additional rows on south side of school just off the entrance location. Parking on the east side of Montevideo Rd.

Kissn' Ride Yes, a two lane layout drive totally separated from the bus parking located in front of the school, just east of the exit drive.

Comments

School implemented full time Kindergarten Classes this Fall, learning curve for parents utilizing K & R and Dismissal routine, better now than at start of year

Spoke to Vice Principal Ms. Carpe and she was not overly concerned about morning or afternoon drop off or pick up routines.

Many students observed walking home from St. Teresa of Avila

Staff assist with bus loading and marshalling of students on school internal walkways

No conflicts observed during my inspection this date

A very quite residential school site with an orderly Dismissal period.

Recommendations

1. That Parking Control Officer visit this site during Dismissal period [2:50-3:10 PM] to enforce the posted signs on Montevideo Rd. in the vicinity of St Teresa of Avila School

Boris Swedak
Traffic Safety Council
Citizen Member
Ward 3

10j

Laura Wilson

From:
Sent:
To:
Cc:
Subject:

St. Joan of Arc S.S. Dismissal Report

Address- 3801 Thomas St.

Phone No. [905] 285-0050

Z # 57

ID # 197

Grades --9-12

Dismissal Time-2:30 PM

Date of Inspection – October 1 st., 2012

Weather- Overcast, 19 deg. C

Adjacent to Park- Yes

Public Transit- Yes, but it does not impact on Dismissal

School Transport-2 full size buses, 3 cube Vans,2 dodge caravans

Parent Behavior- Good

Parking-- 4 long rows in the south lot, 4 additional very long rows in the north lot shared with the local area Library.

Parking on the north side of Thomas St. and east side of Churchill

Meadows

Kiss'n Ride—Not defined as such

Signs- In place on all right of ways and internal school property.

Comments:

A relatively new school site sited on a large parcel of land with more than adequate parking.

Lots of Walkers observed walking home this date

No conflicts observed during today's inspection

Staff volunteers assist with bus loading and monitoring on school grounds

The Principal previously spoke to Dale Lucas to investigate altering the east drive access to provide for a no left turn restriction on Thomas St while retaining the access off Churchill Meadows as a two way system serving the school, community centre and library.

This has now been put in place & the change has certainly lessen traffic congestion on Thomas Street at this location.

I spoke to the Principal, Mike O'Grady, who has had 2 visits by D. Lucas this term and is content with these changes

Dismissal works relatively well at this school .

Recommendations:

1. That Parking Control Officer visit this school during Dismissal [2:15 -2:40 PM] to enforce posted "No Stopping" signs on both Thomas St. and on Churchill Meadows Blvd.

Boris Swedak
Traffic Safety Council
Ward 3
Citizen Member

Laura Wilson

From:
Sent:
To:
Subject:

[REDACTED]

[REDACTED]

[REDACTED]

Dismissal Report

School Name- St. David of Wales

Address- 4200 Beacon Lane

Phone No. [905] 848- 4200

Z # 30

ID # 109

Grades - JK-8

Dismissal Time- 3:15 PM

Date of Inspection – October 2 nd., 2012

Weather- Sunny, 18 deg. C

Adjacent to Park- Yes

Public Transit- Yes

School Transport-1 full size bus,1 cube van

Parent Behavior- Good

Parking- Exclusive row of parking for staff along southerly property boundary adjacent to school building,, two long lanes straddling the southerly exit drive to Rathburn Rd.,on the west side

of Beacon Lane, 8 lane parking on south east side of crescent front drive.

Kissn' Ride- yes , the short length of standard 3 lane,one way layout with exclusive bus lane adjacent to curb

Signs- All in place on both roadway & school,

Comments:

Road resurfacing works underway in Rathburn Rd adjacent to School site, slowing traffic greatly.

Many walkers observed leaving this school

No conflicts observed this inspection

40 kms. flashing signs in place and active on Rathburn Rd. adjacent to school

Teachers walk their Kindergarden class to the cube van

Vested staff assist students during normal Dismissal Period

Parking violations noted in front of school site

Dismissal works well at St. David of Wales elementary school

10n

Maze gates installed at Park adjacent to school

Principal complaining of cut through traffic from Beacon Lane to Rathburn Rd., the only remedy I might suggest, is installing oversized signs on both sides of driveway indicating School Traffic Only,

School Staff might also monitor autos on grounds during "arrival & departure periods" to ensure school traffic only however this would only be effective during above captioned timeframe.

There are no measures that the City might undertake to eliminate this cut through traffic concern on Private Property

Recommendations:

1. That Parking Control Officer visit this site [3:00 3:20 PM] to enforce the existing posted signs on Beacon Lane & Rathburn Rd. adjacent to St. David of Wales School

2. That Dale Lucas, Maintenance Manager of Catholic Board, erect an oversized sign, on each side of driveway entrance on Beacon Lane indicating "School Traffic Only"

Boris Swedak
Traffic Safety Council
Citizen Member
Ward 3

Laura Wilson

From:
Sent:
To:
Cc:
Subject:

Dolphin Sr.. Dismissal Report

Address 18 Brookside Dr.

Phone No. 905-826-4247

Z # 39 E ID # 17

Grades 6-8

Dismissal Time 2:30 PM

Date of Inspection October 3, 2012

Weather Overcast/drizzle , 18 deg.C

Adjacent to Park- Yes

Public Transit- No

School Transport--8 full size buses, 3 cube van

Parent Behavior-good

Parking- 4 medium rows in school lot, additional limited parking
on Brookside Dr.

Kissn' Ride--not marked as such,

Signs-Signage needs be reviewed by D. Marcotte & TSC members.

Comments:

Dolphin Sr. school is located at the south end of a residential street with access to same from the cul de sac at the terminal end. Very low volume of traffic on Brookside Dr.

Parents park on Brookside DR. and cause congestion during afternoon dismissal period

Spoke to Principal Kahan regarding her concerns regarding morning drop off and afternoon Dismissal Period. She indicates that there is congestion within parking lot and on Brookside Dr. during Dismissal. 40 Staff practically fill parking lot leaving few stalls available for parents.

It is imperative that this school site be reviewed by Peel Maintenance rep. D. Marcotte, to indicate the following potential alterations:

- a. Define two lane, one way driveway
- b. paint exclusive bus lane adjacent to curb.
- c. Install fire route/no parking signs along entire drive.
- d. repaint the entire parking lot detailing individual parking stalls.
- e. paint one way directional arrows on driveway pavement.

Vested volunteers assist with the monitoring of students on site and the bus loading operation.

No conflicts observed during this inspection.

Lots of walking students leaving this site.

3 cube vans wait at the top of lot prior to Dismissal causing minor blocking of lane

Students were well behaved and used safety walks to access the waiting buses

Dismissal works relatively well at this school mainly due to location of school ,good conduct of students and staff managing the Dismissal procedure.

Recommendations:

1. That Peel Maintenance Rep. D. Marcotte along with Traffic Safety Council Members review this site with a view of revising parking lot and driveways.

109

2. That T & W review the intersection of Brookside Dr./Britannia Rd. to install the standard School signs on Brookside Dr. right of way.

Boris Swedak
Traffic Safety Council
Ward 3
Citizen Member

Laura Wilson

From:
Sent:
To:
Cc:
Subject:

Dismissal Report

School Name-Canadian Martyrs

Address 1185 Mississauga Valley Boulevard

Phone No. {905} 275- 0094

Z # 21 ID # 91

Grades JK-8

Dismissal Time- 3:00 PM

Date of Inspection October 5th. 2012

Weather- Cloudy , 17 Deg.C

Adjacent to Park-Yes

Public Transit-Yes, but no impact on Dismissal Period

School Transport 2 Full size Buses, 1 mini bus, 2 cube vans

Parent Behaviour- Acceptable

Parking- Main lot on east side of school consisting of 3 lanes, additional parking stalls at right angles to entry drive, parents also store in K & R lane and behind the first row of parked vehicles

Kissn' Ride-Yes, a bus only parking lane adjacent to curb at front of school, the K & R lane is separated and to the east of school.
The K & R is marked as a two lane facility however parents park at the rear of

the parked autos forming an additional lane, through traffic is sandwiched between the proper marked K & R and the illegal parent lane.

Signs- In Place and adequate

Comments:

Spoke to the Principal, Lucy Papaloni regarding the congestion which occurs during Dismissal Period

in the parking lot of this school. She requested comment on what might be done to improve the site conditions

I observed a very high volume of autos on site, they just kept coming and coming until every available

nook & cranny of the school lot was filled. This was a fine weather day as well, one can only imagine

what happens on a rain day.

3 vested staff monitor students and vehicles on the school lot. They are to be complimented for bringing

a sense of order to what would certainly be gridlock without their directing traffic flow.

The pavement paint is faded and should be identified for a refresh in next year's program

The general layout of this school is generally quite good, location of bus lanes & K & R lanes appropriate, adequate parking .

Suggest to Dale Lucas that he consider identifying and painting 2 through lanes adjacent to the K & R lane , so that parents would now have a secondary storage lane at Dismissal.

There is sufficient width to accommodate this by simply shifting the two existing parking lanes slightly

during the repainting contract.

Principal Papaloni should encourage more students to walk to school . This school should be

considered as a walk to School candidate by TSC Committee

High volume of students observed walking home

No conflicts during this inspection

10+

Recommendations:

1, That the Maintenance Manager of the Catholic School Board include Canadian Martyrs School in the 2013 painting contract to refresh all pavement markings

2. That Dale Lucas review the possibility of providing 3 lanes along the K & R location to serve as one K & R lane, and 2 through lanes, one of which would serve as a storage lane during Dismissal Period.

3. That Parking Control Officer visit Canadian Martyrs during Dismissal Period [2:50- 3:15 PM] to enforce the posted signs on Mississauga Valley Boulevard

Boris Swedak
Traffic Safety Council
Citizen Member
Ward 3

Laura Wilson

From:
Sent:
To:
Cc:
Subject:

Erin Mills Sr. Dismissal Report

Address 3546 South Common Court

Phone No. [905] 820-9777

Z # 25

ID # 22

Grades - 6-8

Dismissal Time-- 3:00 PM

Date of Inspection October 9 , 2012

Weather – Sun cloud mix 15 deg. C

Adjacent to Park- Yes

Public Transit- No

School Transport-2 full size buses, 4 cube Vans

Parent Behavior-Good

Parking- One long row of single stalls along the North side of property,
7 spaces on South side of drive at entry to school, both sides of South

lov

Common Court.

Kissn' Ride- Yes, a single lane adjacent of curb marked as bus lane, drive is a 2 lane layout with a turn circle at extreem westerly limit of property.

Signs- In Place and adequate for this site and right of way

Comments:

Former Loyola site to the North is being used as an adult teaching facility with approx. 50 enrolment,
no longer a traffic concern at Burnhamthorpe Rd.

Spoke to school Custodian M. Grove regarding Dismissal Concerns

Full size buses loading zone is on the street, appropriate signs define area.
Large buses unable to use driveway.

Review of driveway layout by D. Marcotte & TSC reps to be undertaken during
October 23 rd. meeting

Lots of walkers, most proceeding south through park setting.

No conflicts observed during this inspection.

School staff monitor the dismissal program ,assist with bus
loading.

School on a "No Exit" street with minimal traffic other than school
staff and parents.

Minimal congestion during Dismissal Period

Dismissal works relatively well at Erin Mills Sr. School

Recommendations:

1. That Driveway layout be reviewed by Peel Maintenance Director D . Marcotte & TSC
staff
D.Brown, B. Swedak, Peter Westbrook with a view of accommodating all buses on school
grounds

Boris Swedak
Traffic Safety Council
Citizen Member,
Ward 3

Laura Wilson

From:
Sent:
To:
Subject:

Marvin Heights.

Dismissal Report

Address- 7455 Redstone Rd

Ph. [905] 677- 1526

Grades K-5 Area Z-48 W

School ID # 41

Date of inspection - Monday, October 15th., 2012

Weather – Sun/cloud mix, 9 deg. C

Dismissal time 3:30 PM

Adjacent to Park --Yes

Public Transit--Yes ,but no impact on the Dismissal period

School Transport 1 cube van, 4 full size buses

Parent Behavior--Good

Parking-- 3 rows of angle parking in front of school,
2 lanes contained in a curbed area just west of main drive,all lanes
are configured in a herring bone layout,on the east side of Redstone,
on adjacent side streets,and on the 2 lane drive adjacent to curb
in front of bus lane designation.

Kissn' Ride Lane- Yes, a two lane drive with exclusive bus lane painted
adjacent to curb, parent drop off and pick up area designated beyond bus
area further along drive.

Signs-In place and well marked on both roadway allowance and school grounds

IOx

Comments:

Spoke to vice Principal A. Tshering regarding Dismissal concerns

Student enrolment down slightly this term

Observed lots of students walking home from Marvin Heights PS.

Volunteers and staff assist with bus loading and traffic monitoring.

Older school in a residential enclave.

No conflicts observed this inspection

K & R & other pavement markings visible

Newly oriented K & R facility located at northerly end of property separate from bus storage area.

Dismissal period appears to be working well enough at this time due mainly to the efforts of school staff and volunteers.

Recommendations:

1. That Traffic Control Officer visit this site on during the Dismissal Period [3:20- 3:45 PM] to ensure compliance of posted signs on Redstone Rd..

Boris Swedak
TSC
Citizen Member
Ward 3

Laura Wilson

Public Safety Committee

Subject: FW: Questions re TSC

Importance: High

OCT 24 2012

From: Gentile, Anna [mailto:Anna.Gentile@dpcdsb.org]

Sent: 2012/09/26 3:21 PM

To: Laura Wilson

Subject: FW: Questions re TSC

Importance: High

Hi Laura,

I am attending the meeting tonight.

The bus stop request on Gulfstream Way has already been dealt with administratively by STOPR. Parents and schools have already been notified.

There are three stops in that little subdivision which service six schools. All three stops are centrally located in order to pick up all students (most with siblings attending different schools). All busses enter Crosscurrent Drive and exit Tradewind Drive.

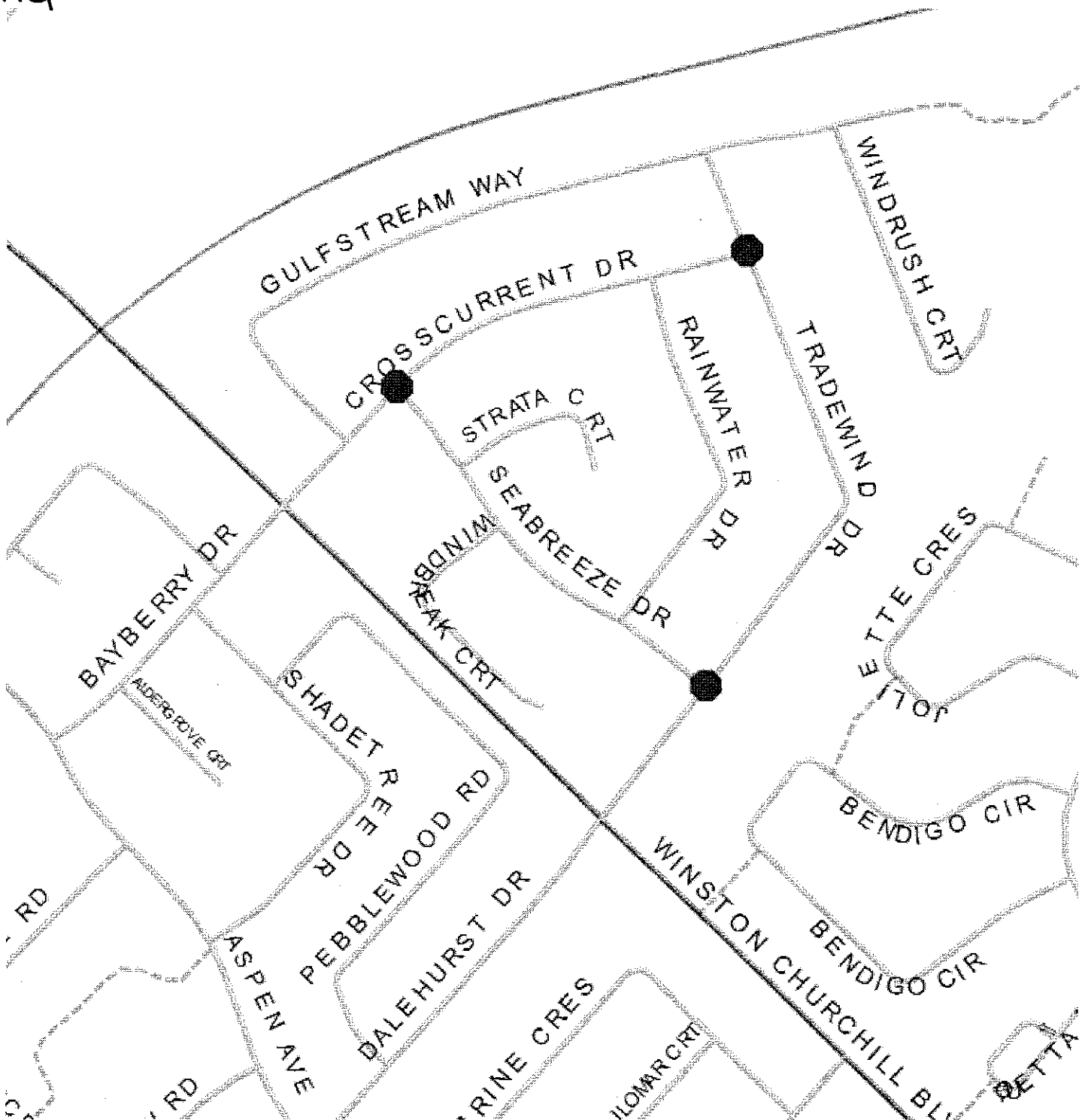
The Shelter Bay parents are requesting to have a bus stop directly in front of a home on Gulfstream Way in order to accommodate a home-run daycare center. This request was denied by STOPR. Parents were given a choice to use either stop at Crosscurrent & Seabreeze and/or Crosscurrent & Tradewind. Both stops are well within the Boards' walk to stop policy.

STOPR transports over 200 students from those few streets and our department has not received any other calls regarding safety.

Let me know if you require anything further.

Thanks.

Anna



Anna Gentile

Operations Officer, West Area



Student Transportation of Peel Region

Peel District School Board, Dufferin-Peel Catholic District School Board

Tel: 905-890-6000 or 1-800-668-1140

www.stopr.ca

Laura Wilson

From: Laura Wilson
Sent: 2012/10/11 10:23 AM
To: [REDACTED]
Cc: Chris Fonseca; 'Mario Pascucci'; Sheelagh Duffin
Subject: RE: Crossing guard Rathburn Road/Willowbank Trail
Attachments: Traffic Safety in School Zones Corporate Policy.pdf

Traffic Safety Committee

OCT 24 2012

Hello,

Thank you for bringing your concerns to the attention of Traffic Safety Council.

Please be advised that the following Traffic Safety Council recommendation was passed at the General Committee meeting on October 3, 2012 and was subsequently adopted at Council on October 10:

TSC-0127-2012

1. That the Crossing Guard located at the intersection of Rathburn Road and Willowbank Trail for students attending St. Vincent de Paul Catholic School, 665 Willowbank Trail, be removed as of December 21, 2012, as, similar to the results of the site inspections conducted on April 5, 2012 and April 17, 2012, the warrants are no longer met and turning traffic is light at this intersection.
2. That the Principal of St. Vincent de Paul Catholic School be requested to notify the affected students and parents that the Crossing Guard currently located at the intersection of Rathburn Road and Willowbank Trail will be removed on December 21, 2012.

For your review, I have attached the City of Mississauga's Corporate Policy regarding traffic safety in school zones which outlines the warrants for placement of a Crossing Guard. If you have any questions regarding the warrants for placing a Crossing Guard, please contact Sheelagh Duffin, Crossing Guard Supervisor at 905-896-5167.

I will place your email on the Traffic Safety Council Agenda for the committee's review.

Sincerely,

Laura Wilson
 Legislative Coordinator
 The City of Mississauga
 Legislative Services, Office of the City Clerk
<http://www.mississauga.ca/portal/cityhall/officeofthecityclerk>

From: Paul Bordin [REDACTED]
Sent: 2012/10/10 8:52 AM
To: Traffic Safety; Chris Fonseca
Cc: mario.pascucci@dpccsb.org
Subject: RE: Crossing guard Rathburn Road/Willowbank Trail

To whom it may concern:

As a family of 7 living in the vicinity of this intersection with the 2 schools, St. Vincent de Paul and John Cabot adjacent to one another,

12a

we were suprised to learn that the crossing guard will no longer be at this station.

I urge the persons and groups involved: (Councillors, Trustees, School personnel) to re-consider this and re-instate the guard.

I personally drive by this intersection every day and see the dangers involved due to the traffic and lights.

Also, in light of the face that FULL day kindergarten has started it is even MORE important that the guard be there for the smallest pupils.

Paul Bordin & Caroline Bordin & Family
[REDACTED]
[REDACTED]

Laura Wilson

13

From: Laura Wilson
Sent: 2012/10/18 5:25 PM
To: [REDACTED]
Cc: Sheelagh Duffin
Subject: RE: Crossing Guard Removal - Rathburn and Willowbank Trail
Attachments: Traffic Safety in School Zones Corporate Policy.pdf

Traffic Safety Committee

OCT 24 2012

Hello,

Thank you for brining your concerns to the attention of Traffic Safety Council.

Please be advised that the following Traffic Safety Council recommendation was passed at the General Committee meeting on October 3, 2012 and was subsequently adopted at Council on October 10, 2012:

TSC-0127-2012

1. That the Crossing Guard located at the intersection of Rathburn Road and Willowbank Trail for students attending St. Vincent de Paul Catholic School, 665 Willowbank Trail, be removed as of December 21, 2012, as, similar to the results of the site inspections conducted on April 5, 2012 and April 17, 2012, the warrants are no longer met and turning traffic is light at this intersection.
2. That the Principal of St. Vincent de Paul Catholic School be requested to notify the affected students and parents that the Crossing Guard currently located at the intersection of Rathburn Road and Willowbank Trail will be removed on December 21, 2012.

For your review, I have attached the City of Mississauga's Corporate Policy regarding traffic safety in school zones which outlines the warrants for placement of a Crossing Guard. If you have any questions regarding the warrants for placing a Crossing Guard, please contact Sheelagh Duffin, Crossing Guard Supervisor at 905-896-5167, who I have also copied on this email.

I will place your email on the Traffic Safety Council Agenda for the committee's review at their next meeting which is open to the public and will take place on Wednesday, October 24, 2012 at 5:00 p.m.

Sincerely,

Laura Wilson
Legislative Coordinator
The City of Mississauga
Legislative Services, Office of the City Clerk
905-615-3200 ext. 5425
<http://www.mississauga.ca/portal/cityhall/officeofthecityclerk>

From: Lynn [REDACTED]
Sent: 2012/10/15 12:58 PM
To: Traffic Safety; Chris Fonseca
Cc: [REDACTED]
Subject: Crossing Guard Removal - Rathburn and Willowbank Trail

Hi

13a

I have been notified by my children's elementary school - St. Vincent de Paul that we will be losing the crossing guard at Rathburn Road and Willowbank Trail.

My children go to this school and in my opinion all schools should have a crossing guard. I do not understand why you would suddenly determine that our children no longer require one when there has been one on there for as long as I have lived in the neighbourhood (since 1997). As long as there are young children crossing there, there should be a crossing guard. This is a very short light and does not allow a lot of time for children crossing. Drivers are getting more careless and less watchful these days, everyone is in a hurry and elementary children don't pay attention and anticipate what a driver is going to do which is necessary for our children's safety.

This is a ludicrous decision and I would like to understand why you have made this decision and I would also ask that this be reviewed and removed. As a taxpayer to the city my children have the right to cross the street with a crossing guard present and my taxes should allow for that to occur.

I am the Student Council Chair for St. Vincent de Paul and we have asked the principal to have someone come to our next council meeting to discuss this with the parents as we are not very happy about this decision. Our next council meeting is Nov 6th. I trust that a representative will be there to address our concerns.

Concerned Parent,

Lynn Seville

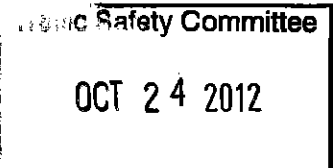
Memorandum

TO: Chair and Members of Traffic Safety Council

FROM: Tony Stasi, Acting Manager of Parking Enforcement

DATE: October 2, 2012

SUBJECT: **Parking Enforcement in School Zones**
Month of September



During the month of September 2012 Parking Enforcement staff carried out enforcement in school zones with the following results:

Total number of schools patrolled:	39
Total number of patrols:	91
Total number of infraction notices issued:	126

The attached report indicates the schools patrolled for the month of September.

A handwritten signature in black ink, appearing to be "Tony Stasi".

Tony Stasi
Acting Manager, Parking Enforcement

:had
encl.

School Patrols - SEPTEMBER 2012

School	Complainant	Date Patrolled	AM	PM	Tickets Issued
BARONDALE PS 200 BARONDALE DRIVE	TS COUNCIL	17-Sep-12	0	1	6
BRIARWOOD P.S 1065 MISSISSAUGA VALLEY BLVD	TS COUNCIL	6-Sep-12	0	1	7
		10-Sep-12	0	1	4
BRITANNIA PS 1145 SWINEBOURN DRIVE	TS COUNCIL	28-Sep-12	0	1	1
BROOKMEDE PS 2250 COUNCIL RING ROAD	TS COUNCIL	10-Sep-12	0	1	3
		11-Sep-12	1	1	5
CANADIAN MARTYRS SCHOOL 1185 MISSISSAUGA VALLY BLVD	TS COUNCIL	4-Sep-12	1	0	1
		17-Sep-12	0	1	2
		18-Sep-12	0	1	0
		19-Sep-12	0	1	4
			0	1	1
CLARKSON P.S 888 CLARKSON ROAD SOUTH	TS COUNCIL	7-Sep-12	0	1	0
			0	1	0
		13-Sep-12	0	1	0
COOKSVILLE CREEK P.S 5100 SALISHAN CIRCLE	TS COUNCIL	18-Sep-12	1	1	6
DERRY WEST VILLAGE P.S 620 TWAIN AVENUE	TS COUNCIL	13-Sep-12	0	1	0
		25-Sep-12	0	1	0
		26-Sep-12	0	1	7
DIXIE PUBLIC SCHOOL 1120 FLAGSHIP DRIVE	TS COUNCIL	12-Sep-12	0	1	0
DUNRANKIN P.S 3700 DUNRANKIN DRIVE	TS COUNCIL	7-Sep-12	0	1	0
EDENROSE P.S 1342 EDENROSE P.S	TS COUNCIL	6-Sep-12	0	1	2
		11-Sep-12	1	0	1

School Patrols - SEPTEMBER 2012

School	Complainant	Date Patrolled	AM	PM	Tickets Issued
EDENWOOD MIDDLE SCHOOL 6770 EDENWOOD DRIVE	TS COUNCIL	26-Sep-12	0	1	0
ELLENGATE P.S 3480 ELLENGATE DRIVE	TS COUNCIL	12-Sep-12	0	1	0
ERIN CENTRE MIDDLE SCHOOL 3240 ERIN CENTRE BLVD	TS COUNCIL	18-Sep-12	1	0	0
		19-Sep-12	1	1	0
		20-Sep-12	1	1	0
		21-Sep-12	0	1	0
		21-Sep-12	0	1	1
FAIRVIEW PS 3590 JOAN DRIVE	TS COUNCIL	19-Sep-12	0	1	3
		19-Sep-12	0	1	3
		19-Sep-12	0	1	1
		19-Sep-12	0	1	0
		20-Sep-12	0	1	2
			0	1	0
		21-Sep-12	0	1	2
			0	1	0
FAIRWIND SENIOR P.S 5235 FAIRWIND DRIVE	TS COUNCIL	25-Sep-12	0	1	2
HAVENWOOD P.S 3255 HAVENWOOD DRIVE	TS COUNCIL	20-Sep-12	1	0	5
JOAN DRIVE P.S 3590 JOAN DRIVE	TS COUNCIL	4-Sep-12	1	1	5
			1	1	5
		27-Sep-12	0	1	0
KINDREE P.S 7370 TERRAGAR BLVD	TS COUNCIL	28-Sep-12	0	1	2
LANCASTER PS 7445 NETHERWOOD ROAD	TS COUNCIL	6-Sep-12	0	1	0
		13-Sep-12	0	1	1
MENTOR COLLEGE 40 FOREST AVENUE	TS COUNCIL	13-Sep-12	1	0	5

School Patrols - SEPTEMBER 2012

School	Complainant	Date Patrolled	AM	PM	Tickets Issued
OSPREY WOODS P.S 6135 LISGAR DRIVE	TS COUNCIL	14-Sep-12	0	1	4
QUEEN OF HEAVEN C.S 1198 ALEXANDRA AVE	TS COUNCIL	27-Sep-12	0	1	2
			0	1	0
		28-Sep-12	0	1	1
			0	1	0
RIDGEWOOD P.S 7207 CAMBRETT DRIVE	TS COUNCIL	20-Sep-12	0	1	10
			0	1	0
		21-Sep-12	0	1	0
RUTH THOMPSON 5605 FRESHWATER DRIVE	TS COUNCIL	12-Sep-12	0	1	1
SAN LORENZO RUIZ P.S 120 BARNDALE DRIVE	TS COUNCIL	12-Sep-12	0	1	1
			0	1	0
SETTLERS GREEN 5878 MONTEVIDEO ROAD	TS COUNCIL	13-Sep-12	0	1	1
SHERWOOD MILLS P.S 1385 SHERWOOD MILLS BLVD	TS COUNCIL	17-Sep-12	0	1	0
ST ALBERT OF JERSUELEM 7185 ROSEHURST DRIVE	TS COUNCIL	7-Sep-12	1	1	0
ST ALFRED 3341 MAVENWOOD DRIVE	TS COUNCIL	18-Sep-12	0	1	0
ST. JULIA 6770 HISTORIC TRAIL	TS COUNCIL	6-Sep-12	0	1	0
			0	1	6
		27-Sep-12	0	1	0
ST. MARGARET OF SCOTLAND 2266 COUNCIL RING ROAD	TS COUNCIL	27-Sep-12	0	1	0
			0	1	0

School Patrols - SEPTEMBER 2012

School	Complainant	Date Patrolled	AM	PM	Tickets Issued
ST PETER AND PAUL 4205 WOODINGTON DRIVE	TS COUNCIL	25-Sep-12	0	1	0
			0	1	0
			0	1	0
		26-Sep-12	0	1	0
			0	1	0
ST RAYMOND SCHOOL 5735 WHITEHORN AVENUE	TS COUNCIL	25-Sep-12	0	1	5
		28-Sep-12	0	1	5
ST THERESA OF THE CHILD JESUS E.F.C 6930 FOREST PARK DRIVE	TS COUNCIL	25-Sep-12	0	1	1
THE VALLEYS SENIOR P.S 1275 MISSISSAUGA VALLEY BLVD	TS COUNCIL	11-Sep-12	0	1	0
WESTACRES P.S 2165 BREEZY BRAE DRIVE	TS COUNCIL	21-Sep-12	0	1	0
WHITEHORN P.S 5735 WHITEHORN AVENUE	TS COUNCIL	27-Sep-12	0	1	0
			0	1	1
		28-Sep-12	0	1	0
WHITEOAKS P. S 1690 MAZO CRES	TS COUNCIL	20-Sep-12	0	1	1
			0	1	0
			0	1	0
		21-Sep-12	0	1	0
			0	1	0