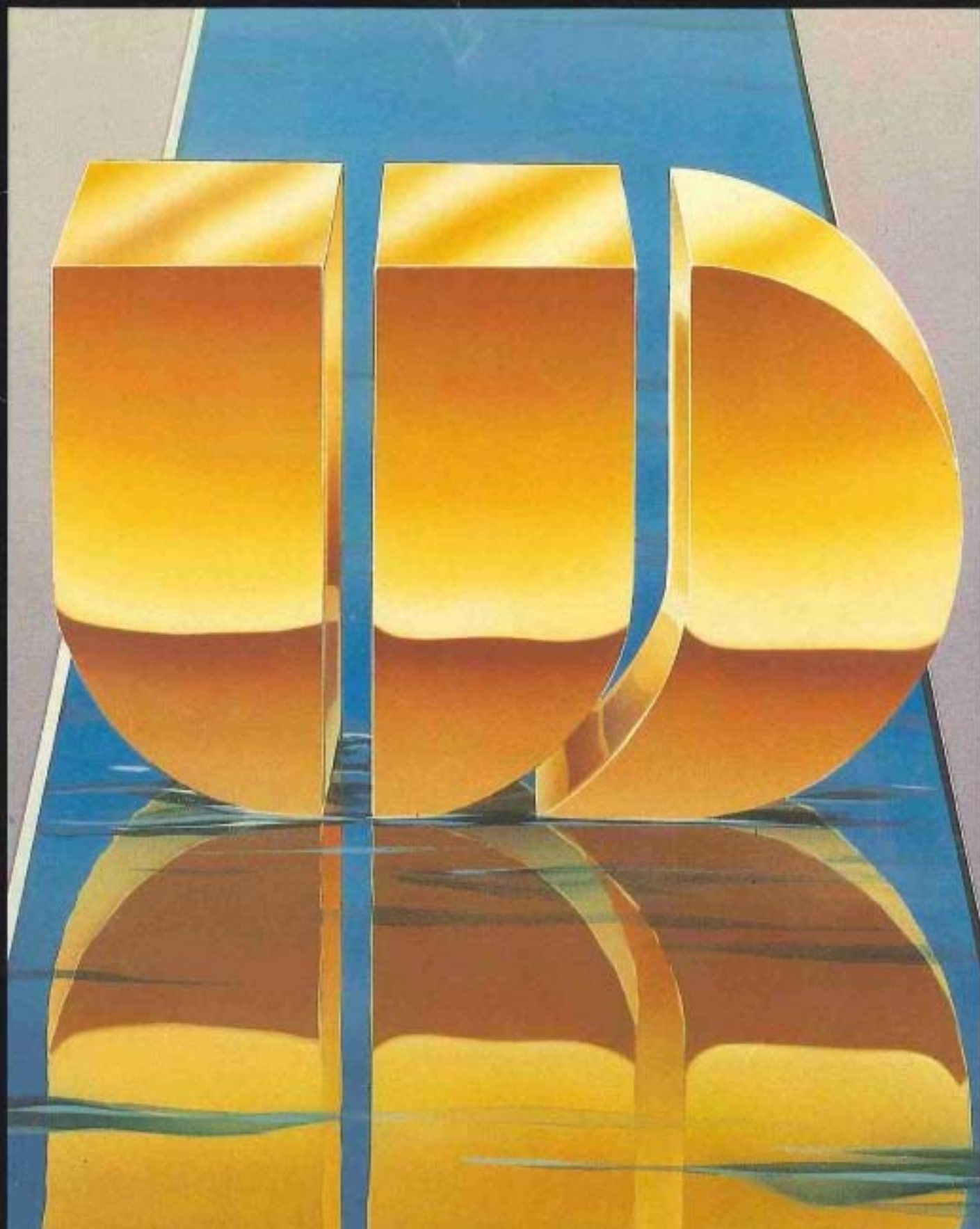


JURY REPORT

MISSISSAUGA URBAN DESIGN AWARDS 1989





F O R E W O R D

On behalf of the Members of Council of the City of Mississauga, I take great pleasure in extending my congratulations to the recipients of Awards and Citations in the 1989 Mississauga Urban Design Awards. I also extend our sincere appreciation to the Jury Members for their time and expertise which are so vital to the success of the Awards program.

New development creates many urban design issues which must be carefully considered due to their influence in shaping Mississauga. The Urban Design Awards program promotes design excellence and recognizes and rewards the development industries for their skill and contribution to our community. Their dedication and commitment is instrumental in creating a dynamic City for the residents of Mississauga.

Sincerely,

HAZEL McCALLION
Mayor



MEMBERS OF COUNCIL

MAYOR Hazel McCallion

COUNCILLORS

- Ward 1** Harold Kennedy
- Ward 2** Pat Mullin
- Ward 3** Maja Prentice
- Ward 4** Frank Dale
- Ward 5** Frank McKechnie
- Ward 6** David Culham
- Ward 7** Nando Iannicca
- Ward 8** Donna Lane
- Ward 9** Ted Southorn

PLANNING AND BUILDING DEPARTMENT

COMMISSIONER R.G.B. Edmunds

CO-ORDINATORS

- Urban Design Awards Program**
- Karen Atherley
- Debra da Costa
- Wayne Nishihama

DIRECTORS

- Design Division**
- J. Dorrell
- Development East Division**
- J. Zipay
- Development West Division**
- W. Waite
- Policy Division**
- J. Calvert
- Administration Division**
- W. Alexander
- Building Division**
- M. Navabi



T H E J U R Y



Roderick MacDonald
Landscape Architect
Landplan Collaborative Ltd.

George Baird
Architect
Baird/Sampson Associates, Architects

Donna Lane
Councillor - Ward 8
Mississauga

Christopher Hume
Art and Architecture Critic
The Toronto Star



BUILT SUBMISSIONS



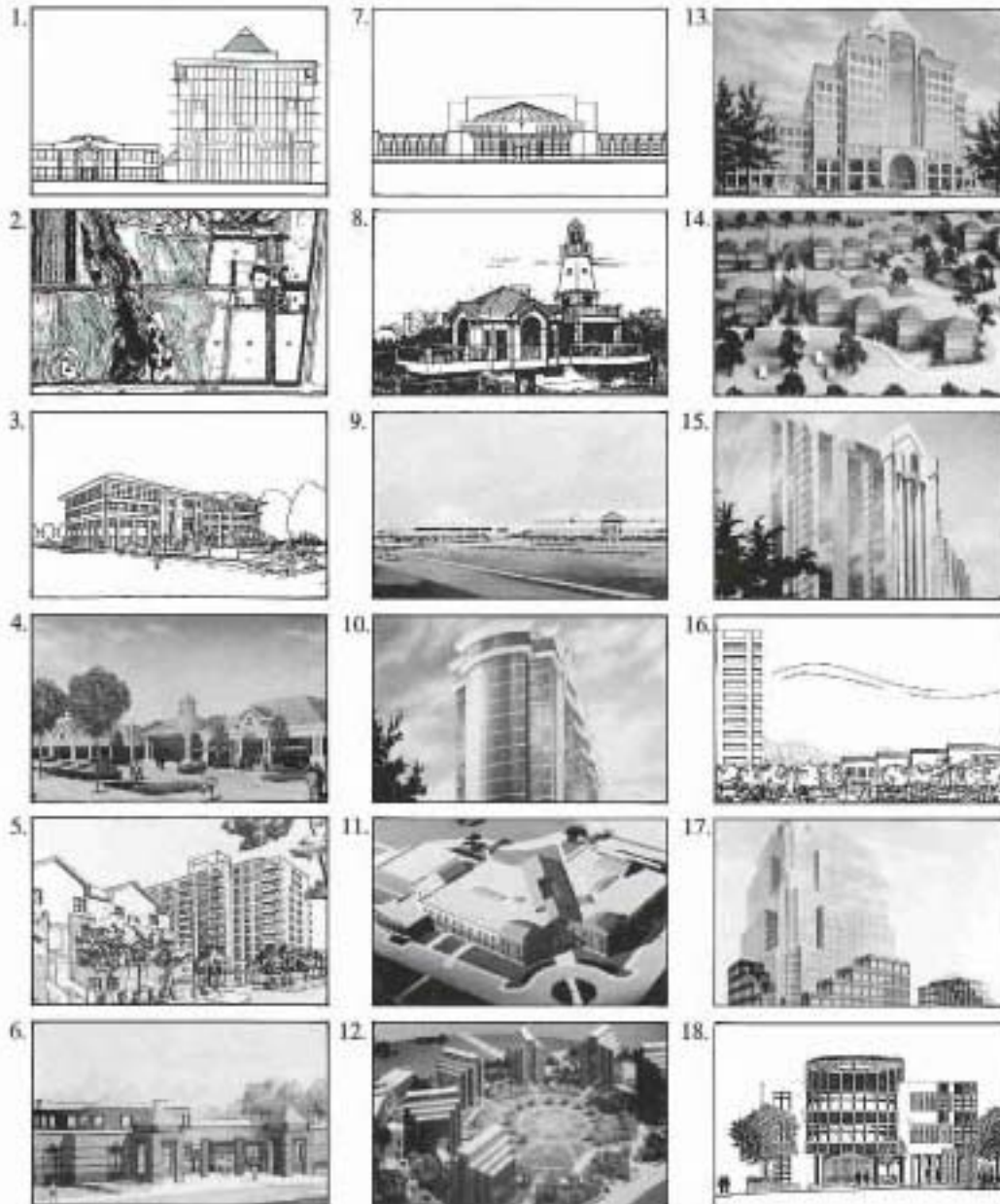
1. Airport Executive Place
2. All Saints Catholic School
3. Dunwin Business Centre
4. Heartland Corporate Centre
5. Heartland Office Campus

6. Hurontario/Rathburn Streetscape Improvements
7. The Mansion
8. MeadowPines Corporate Centre-Entry Feature
9. Mississauga Corporate Centre
10. North Meadowvale Reservoir & Pumping Station

11. The Promontory
12. Ravines of Credit Mills
13. Streetsville Square
14. Vista Cargo Centre



PROPOSED SUBMISSIONS



1. Airport Corporate
Centre
Courtyards Complex

2. Britannia Farm
Master Plan

3. College of Family
Physicians of Canada

4. Credit Landing Mixed Use
Commercial Development

5. Daniels Collegeway/Peel
Non-Profit Housing

6. East Credit No. 1-3
Elementary School

7. Erin Mills West No. 501
Elementary School

8. Front Street Sewage &
Pumping Station

9. Glaxo Canada - Corporate
Headquarters Phase I

10. Hanson-Needler
Esprit Limited

11. Iona Catholic
Secondary School

12. Landford Airport Centre
and Heliport

13. Noble House Corporate
Centre

14. Office Condominiums of
MeadowPines

Corporate Centre

15. Park Mansion

16. Port Credit Harbour &
Waterfront Concept Plan

17. Steinbok Corporate
Centre - Phase II

18. Westdale Office
Development



AWARDS CRITERIA

The jury evaluated entries under two categories:

Built Projects:

Projects which have been totally completed.

Proposed Projects:

Projects for which the conceptual design could be evaluated, and which would be implemented at some future time.

Built projects were eligible for awards and citations, whereas proposed projects were eligible for citations only.

All projects were assessed according to the following criteria:

Significance:

Contribution to city design objectives in terms of city image, visual identity, vistas, skylines, streetscapes, and recognition of site and locational opportunities.

Function:

The accommodation of everyday use, circulation, site utilization, buffering, and the overall legibility.

Aesthetics:

Architecture, landscaping, scale, appropriateness of form, site planning, detailing, use of materials, signage.

Innovation:

Degree of creative response to program requirements and site constraints; capability of influencing trends.

Context:

Relationship of built forms and spaces with existing and planned development; coherence; respect for and enhancement of area character.

Execution:

(Built Projects only). Quality of construction and materials; interpretation of design into reality.



LOCATIONS



- | | |
|--|--|
| 1. All Saints Catholic School
Award - Built Project | 6. The College of Family Physicians of
Canada, New National
Headquarters
Citation - Proposed Project |
| 2. The Promontory
Award - Built Project | 7. Erin Mills West #501
Elementary School
Citation - Proposed Project |
| 3. Hurontario Street/Rathburn Road
Streetscape Improvement
Citation - Built Project | 8. Front Street Sewage
Pumping Station
Citation - Proposed Project |
| 4. The Mansion
Citation - Built Project | 9. Port Credit Harbour and
Waterfront Concept Plan
Citation - Proposed Project |
| 5. Britannia Farm Master Plan
Citation - Proposed Project | |



A W A R D



ALL SAINTS CATHOLIC SCHOOL

The subdued classical architecture of this project presents a strong urban image and gives the design an attractive presence on the street. The creative use of brick, stone and tile enhances the overall appearance of the building with the front facade suggesting an intriguing interior.

This type of architectural detailing is strongly encouraged for schools with perhaps more attention to general site planning and landscaping. Given the debased nature of recent school architecture, All Saints reminds us that a school is a community centre, as well as a practical facility.

Credits:

Russocki and Zawadzki Architects
P.F. Kaudewitz Landscape Architects
Dufferin Peel Roman Catholic Separate
School Board



A W A R D



T H E P R O M O N T O R Y

This project demonstrates impressive consistency of image when viewed from its local approach road as well as from the Queen Elizabeth Way. The stepped form of the buildings composed of a series of interlocking modules breaks the project down to a more human scale.

Of particular note is the extensive and careful landscaping treatment. The sensitive gesture of incorporating the existing watercourse for recreational purposes responds to the needs of the office workers as well as enhancing the existing landscape. The division of parking areas by trees is also an important quality.

Credits:

Sirlin and Giller Architects
Terraplan Landscape Architects
The Friedman Group



BUILT CITATION



HURONTARIO/RATHBURN STREETSCAPE IMPROVEMENTS - HURONTARIO STREET BETWEEN 403 and ROBERT SPECK PARKWAY

This project sets a good precedent for the future public and private development of the streetscape in the Hurontario Corridor. The design appears to resolve difficult site conditions and, as the trees and shrubs mature, will provide a unique visual node in the streetscape. Detailing of the centre median demonstrates how design solutions must change to be effective when viewed from fast-moving vehicles. The use of larger plant material for select plantings would improve the initial appearance of such development.

The project should encourage both private and public projects to treat the street as an important element of urban design.

NOTE: George Baird abstained from commenting on this project due to a conflict of interest.

Credits:

Totten Sims Hubicki Associates Limited
City of Mississauga



BUILT CITATION



T H E M A N S I O N

The dwelling component of urban design constitutes one of the critical dimensions of large scale city building. This project, with its elegance and attention to detail, demonstrates luxurious high-rise living.

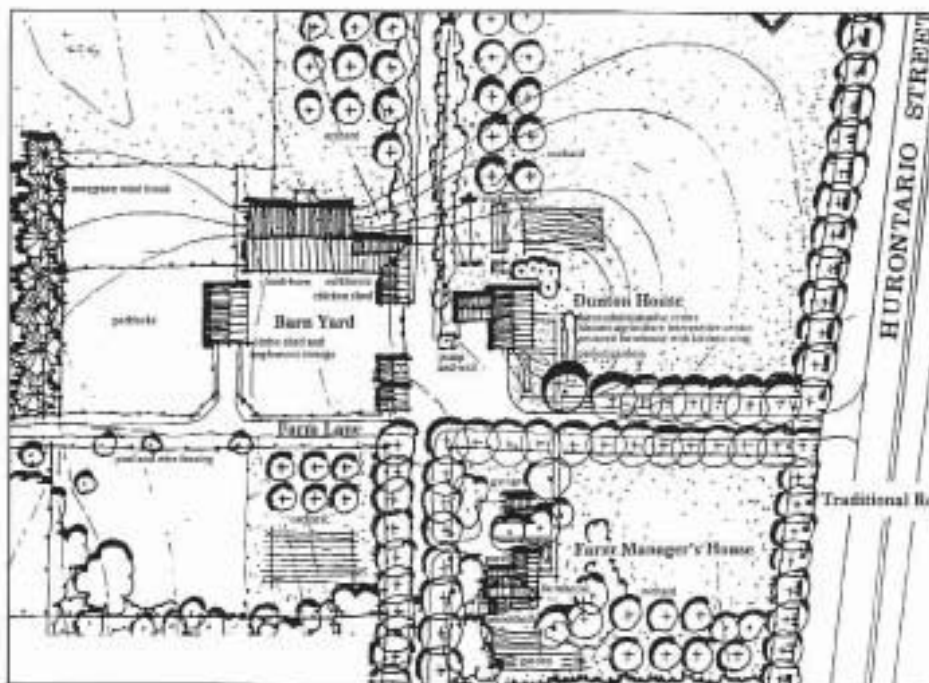
Two, 23 storey towers are joined by a low brick entrance way which brings a human scale to the project. The use of rich paving materials, custom light fixtures and larger specimen trees creates a strong and refined image.

Credits:

Zippan and Barrett Architects, Inc.
Popovich Associates Limited
The Hanson-Needler Corporation



PROPOSED CITATION



BRITANNIA FARM MASTER PLAN

This project, designed to offer educational and recreational opportunities to the public, reflects a conservation ethic and stresses stewardship of the land.

Credits:

Landplan Collaborative Limited
Peel Board of Education
Peter J. Stokes, Consulting Restoration
Architect

The deliberate preservation of agricultural land within the City boundaries is impressive. The plan respects the existing farm concession pattern and appears to effectively provide areas for a variety of activities.

NOTE: Rod MacDonald abstained from commenting on this project, due to a conflict of interest.



PROPOSED CITATION



COLLEGE OF FAMILY PHYSICIANS

As the headquarters for a national organization representing family doctors, this project's quiet and tasteful architecture appropriately assumes the form of a large house. The exterior, with its modulated facade, creates human scale with coloured brick accents and slate roof shingles.

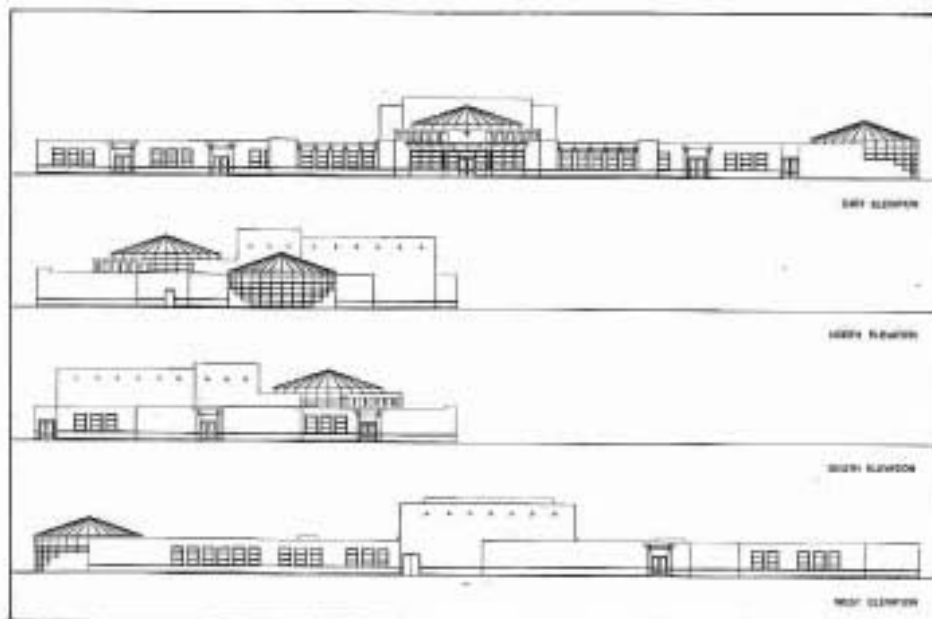
The landscaping has curved entrance gates, screened parking and formal gardens which create a civilized and estate-like ambiance.

Credits:

Parkin Architects Limited
Baker Salmona Landscape Architects
College of Family Physicians of Canada



PROPOSED CITATION



ERIN MILLS WEST NO. 501 PUBLIC SCHOOL

The quiet thoughtfulness of Russocki and Zawadzki's general approach to schools was evident in the proposed Erin Mills West #501 Elementary School. The assiduousness of the firm's approach to school design harks back in an impressive way to the great days of the modern movement school design of the 1950's.

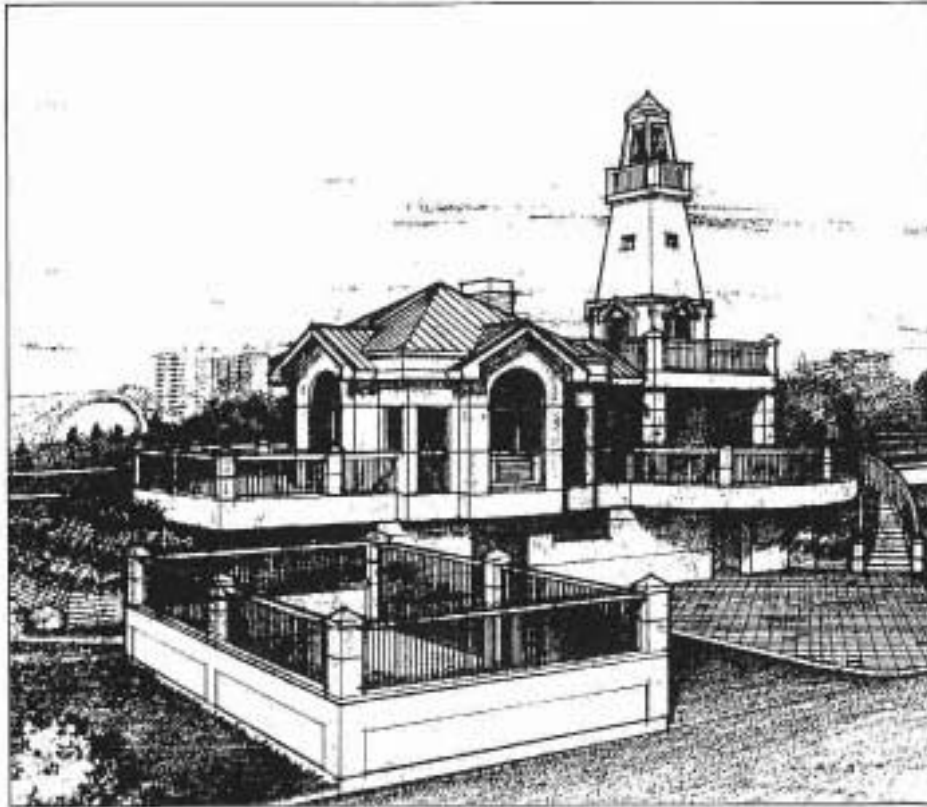
The relaxed symmetry of the project and its curved entrance canopy create a dignified institutional appearance and the fenestration treatment and use of coloured brick detailing are commendable.

Credits:

Russocki and Zawadzki Architects
P.F. Kaudewitz, Landscape Architect
Dufferin Peel Roman Catholic Separate
School Board



PROPOSED CITATION



FRONT STREET SEWAGE PUMPING STATION P O R T C R E D I T

This project addresses the difficulty of locating a utility building in a public space while complementing the adjacent community. The project, designed to replace the existing pumping station, joins technical function with public use and improves the image usually associated with utility buildings. The inclusion of an information booth and washroom facilities is an important feature of this project given the frequent public use in the area.

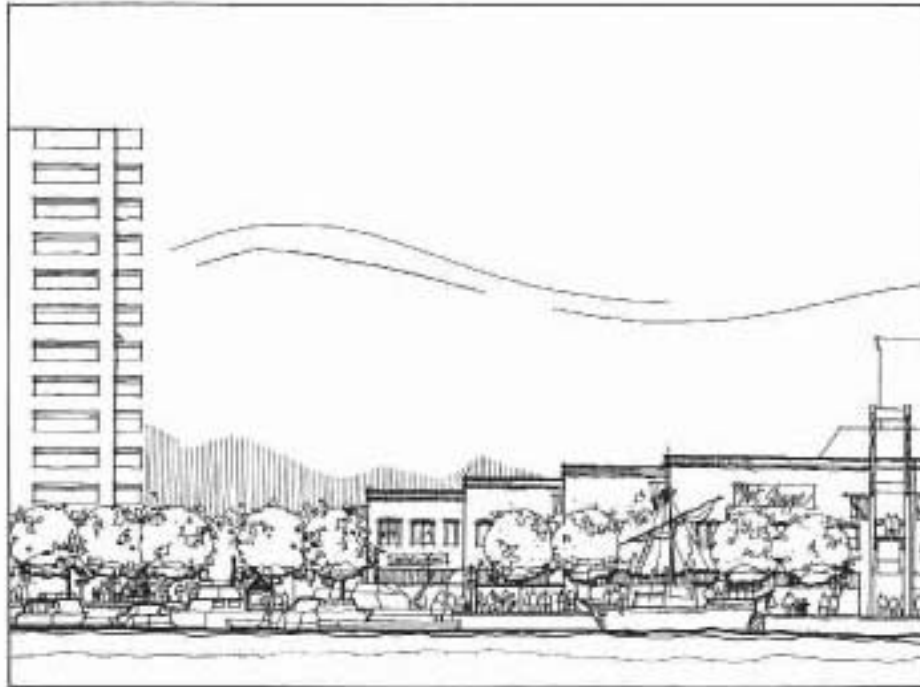
The multiple levels and decks and the treatment of window space give the facility a residential flavour. The lighthouse, although somewhat eclectic, recalls a lighthouse once located near the site and plays upon the waterfront theme.

Credits:

Sedun and Kanerva Architects
Knox, Martin and Kretch Limited
Region of Peel
Hussain of Canada
J.P. Klock & Associates



PROPOSED CITATION



PORT CREDIT HARBOUR & WATERFRONT PLAN - PORT CREDIT

This study demonstrates a sensitive approach to waterfront development and provides a logical mix of land use as well as a good balance of public and private development.

The study encourages extensive public access to the waterfront. The shoreline configuration allows for a variety of active and popular land based activities and integrates them with water based activities.

The plan sets a sound framework for the long term success of this part of the Mississauga waterfront.

Credits:

Hough Stansbury Woodland Limited
Arcop Associates
F.J. Reinders and Associates Canada Ltd.
Michael Michalski Associates
Emrik H. Suichies and Associates
Anthony Usher Planning Consultants.
City of Mississauga



Planning and Building Department
City of Mississauga
300 City Centre Drive
Mississauga, Ontario
L5B 3C4