

Jury Report

2004 Mississauga Urban Design Awards





Mayor's Message

Office of the Mayor

November 2004

Dear Friends:

On behalf of the Members of Council of the City of Mississauga, it is my pleasure to congratulate the winners of the 2004 Mississauga Urban Design Awards.

The large number of nominations for this year's competition demonstrates your continuing dedication to exceptional building design and construction that has helped make Mississauga a great place to live, work and play. Indeed, the jury members had a considerable challenge making their selection from the many outstanding submissions and I thank them for contributing their time and expertise to the decision process.

I am proud to say that, in Mississauga, we recognize that design excellence is essential not only in the development and construction of all building types, but also is fundamental to the quality of life in our community and to our identity as a great city. This year in particular, the award recipients have exceeded the competition criteria of interest, function, people-orientation and environmental integration to become true landmarks in Mississauga to be admired for many years to come.

The Mississauga Urban Design Awards is the longest running program of its kind in Ontario. Each year I look forward to recognizing the great efforts your industry makes to meeting and exceeding our standard for urban design excellence. With your contribution Mississauga will continue to develop into a vibrant and liveable city where businesses prosper and residents are proud to call home.

Once again, congratulations to our winners and everyone who submitted designs for consideration in this year's competition.

Sincerely,



Mayor & Members of Council

Mayor

Hazel McCallion

Councillor, Ward 1

Carmen Corbasson

Councillor, Ward 2

Pat Mullin

Councillor, Ward 3

Maja Prentice

Councillor, Ward 4

Frank Dale

Councillor Ward 5

Eve Adams

Councillor, Ward 6

George Carlson

Councillor Ward 7

Nando Iannicca

Councillor, Ward 8

Katie Mahoney

Councillor, Ward 9

Pat Saito

Awards & Judging Criteria

Awards

There are two potential awards:

Award of Excellence

This award exemplifies, as much as possible, the judging criteria and, in particular, the City's design principles.

Award of Merit

This award demonstrates excellence in one or more of the judging criteria and the City's design principles.



Judging Criteria

Projects have been assessed according to the following criteria:

Significance: City Wide Scale

Contribution to the City design objectives as related to City image, visual identity, vistas, skyline, streetscapes, recognition of sites and location opportunities.

Significance: Community Scale

Contribution to the quality of the environment within a community which demonstrates a regard for the context of the locale, enhancing a sense of place and personal safety or reinforcing a unique history.

Innovation

The degree of creative response to program requirements, site constraints and the ability to influence trends.

Context

The relationship or blending of built forms and spaces with existing and planned development, and respect for and enhancement of the area's character.

Execution

The quality of construction materials, and the interpretation of the design into reality.

Jury Members

From left to right:

Eve Adams

City Councillor, Ward 5
City of Mississauga

Edward R. Sajecki

Commissioner
Planning and Building
Department
City of Mississauga

Anne McIlroy

Architect/Urban Designer
Brooks McIlroy Architects

Karen Hammond

Professor of Community
Planning/Urban Design
University of Waterloo

Award of Excellence



Erindale Hall, Student Residence, Phase (VII)

3359 Mississauga Road

University of Toronto at Mississauga

Baird Sampson Neuert Architects

Janet Rosenberg & Associates, Landscape Architects

Erindale Hall is a finely-crafted building of exceptional materials and workmanship that responds to and integrates well with its natural setting. The challenge in this instance was to situate the building in such a way to respect existing topography and minimize impacts upon the natural environment. The result is a building that has two facades that interact with the immediate context quite differently. The one side of the building that has been designed to respect and preserve existing vegetation and natural features is quite tranquil and serene. The opposite side of the building has architectural features that are more animated and lively which respond well to the pedestrian activity of the University campus. The lower floor of the building is recessed forming a continuous and playful covered colonnade for pedestrians. Internal ground floor spaces are designed with generous amounts of glazing to take advantage of views to the surrounding natural environment. Erindale Hall provides an excellent example of how to sympathetically locate a building to integrate with an active pedestrian university campus while still preserving and enhancing the natural environment.

Award of Excellence



Malton Community Centre

3540 Morning Star Drive

The City of Mississauga

Diamond and Schmitt Architects Incorporated

Moffet & Duncan Architects Inc.

Fleisher Ridout Partnership Inc., Landscape Architects

This beautifully designed building creates an appropriate balance between safety and accessibility by ensuring that it is inviting and welcoming to all users while still maintaining appropriate security measures. Generous amounts of fenestration add light to internal functions of the building and create a strong relationship between the internal building and the external site. The transparent nature of the ground floor contributes to an open and welcoming feeling for users and allows internal activities of the centre to be visible from the exterior, thereby creating a building with an animated facade. In addition, the use of glass allows for "internal eyes" to monitor activities taking place in the exterior parkland. High quality landscaping combined with external community facilities complement the building and contribute to the creation of an attractive pedestrian-focussed setting. The Malton Community Centre has been designed to service the needs of a broad spectrum of users and should, therefore, truly function as a "Centre" for the community. The renovations to the existing Malton Community Centre contribute to the dignity of the community and should serve as a catalyst to future neighbourhood improvements.

Award of Excellence

No. 1 City Centre

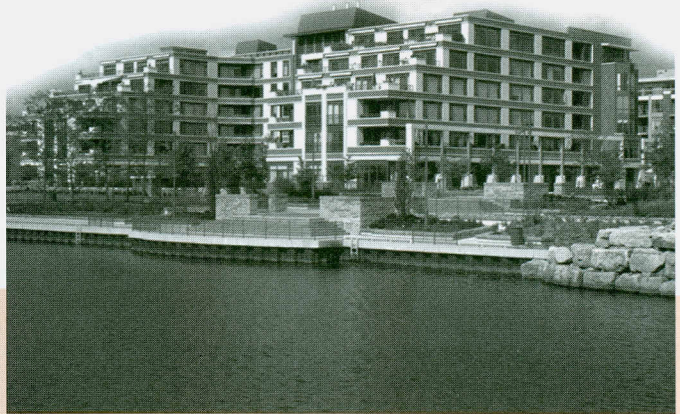
1 and 33 Elm Drive West

Daniels Elm Corporation
Northgrave Architect Inc.
JBM Landscape Architects Ltd.
Land Art Design



No. 1 City Centre are landmark buildings of unique character. The buildings respond well to the urban character of their site by locating their main entrance and welcoming forecourt at the corner, along with grade-related retail uses facing the street. The bases of the two towers are strategically located to align with the public streets and grade-related residential units will contribute to pedestrian activity on the public boulevards. The rear drop-off area, visitors parking, amenity area, art work and high quality landscaping create a tranquil area and are complementary to the building. The most visual and striking aspect of the development are the free-form roof elements located on the top of both towers. Rather than creating a typical roof structure, the architects have created a unique and instantaneously recognizable skyline feature visible from many vantage points throughout the City. No 1 City Centre should act as a catalyst to encourage future architects and developers to create landmark architectural buildings within the City Centre.

Award of Excellence



The Regatta, Port Credit Village

65 Port Street East

Fram Building Group/Slokker Canada
Giannone Associates Architects Inc.
Baker Turner Inc., Landscape Architects

The Regatta is a unique building that relates in an exceptional manner to its surrounding context and hints at the site's industrial past. The south side of the building steps down in building mass and creates landscape terraces with a sense of openness that projects a comfortable pedestrian scale to the waterfront and to St. Lawrence Park. The north facade of the building incorporates residential units with large amounts of glazing, open terraces and high quality landscaping that buffers and creates an appropriate private/public interface. It is intended that the east facade of the Regatta will include grade-related commercial uses that will help to animate the public square that abuts the building. The exterior architecture of the building incorporates an imaginative display of building materials with attractive forms, patterns, textures and colours. Architectural elements break-up the length of the building in a creative manner which animate each facade and provide visual interest to corner units. It is evident that the Regatta was strategically conceived for this site and it is a great addition to the dramatic transformation that is currently occurring in the Village of Port Credit.

Award of Excellence



St. Lawrence Park

75 St. Lawrence Drive

The City of Mississauga

John George Associates, Landscape Architects

St. Lawrence Park takes full advantage of its excellent waterfront location with a design that opens up views to the lake, while at the same time creating multi-level vantage points that provide for a variety of experiences. Through the use of high quality elements, a great selection of plant materials and exceptional workmanship, the city has created a waterfront jewel. The incorporation of site artefacts into display areas adds to the richness of the site and to the quality of the users' experience. St. Lawrence Park successfully integrates passive activities such as walking and sitting with more active uses such as bicycling and in-line skating, while at the same time maintaining an appropriate amount of flexible space to accommodate waterfront concerts and community events. St. Lawrence Park raises the bar for future waterfront park design and is an exceptional amenity for the Port Credit community and the City as a whole.

Award of Merit for Innovation



Live/Work Units - Port Credit Village

143-179 Lakeshore Road East

Fram Building Group/Slokker Canada
Giannone Associates Architects Inc.
Baker Turner Inc., Landscape Architects

The Port Credit Village Live/Work units are a modern interpretation of a traditional mainstreet building typology with residential units occupying the second and third stories above street level commercial spaces. In this instance, the architect has successfully addressed the problematic situation of how to create front doors for residential units on what is essentially the back door of commercial units. The scale and exterior materials of the commercial facade respect the historic qualities of the site's industrial past. They also strike the right balance between fitting into the character of the community and creating an innovative architectural statement. A vibrant colour palette, minimal streetline setback, generous amounts of store-front glazing, entrances addressing the public street and subtle articulation of the façade all contribute to a vibrant pedestrian realm that adds vitality to the entire Port Credit mainstreet. This project not only sets a precedent for future live/work developments within the Port Credit community but also for the rest of the City.

Nominations

2004 Mississauga Urban Design Awards



Bronte College Addition
88 Bronte College Court



**Burnhamthorpe
Community Centre**
1500 Gulleden Drive



Cachet Lanes
Winston Churchill &
Eglinton Avenue



Cooksville Collonade
3024 Hurontario Street



**Creekside Office
Complex, Phase 2**
1855-1875 Buckhorn Gate

Nominations

2004 Mississauga Urban Design Awards



Debek Residence
1400 Birchwood Heights



**Eden Oaks Homes,
Head Office**
1443 Hurontario Street



**Erindale Hall, Students
Residence, Phase (VII)**
3359 Mississauga Road



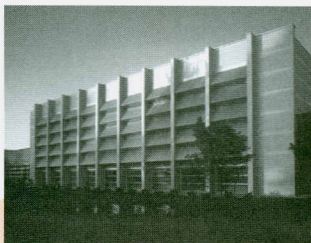
**Live/Work Units -
Port Credit Village**
143-179 Lakeshore Road E.



Heritage Hills
4620 Guildwood Way

Nominations

2004 Mississauga Urban Design Awards



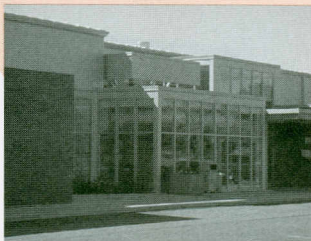
Huron Park Community Centre

830 Paisley Blvd. West



Malton Community Centre

3540 Morning Star Drive



Meadowvale 4 Rinks

2160 Torquay Mews



Mississauga Valley Community Centre

1275 Mississauga Valley Blvd.



No. 1 City Centre

1 and 33 Elm Drive West

Nominations

2004 Mississauga Urban Design Awards



**The Regatta -
Port Credit Village**
65 Port Street East



St. Lawrence Park
75 St. Lawrence Drive



Trinity Falls Homes
19-29 Ellen Street
85 Church Street



Yee Hong Centre
5510 Mavis Road



Publication Prepared by:

City of Mississauga
Planning & Building Department
Development and Design Division

With the assistance of:

Image Engineering
Marketing and Corporate Communications
Specialists

**City of Mississauga
Planning and Building Department
Development and Design Division**
300 City Centre Drive
Mississauga ON L5M 1S8

Tel: 905 896-5522
Fax: 905-896-5553
www.mississauga.ca

October 2004