

25th Anniversary Excellence in Urban Design

2006 Mississauga
Urban Design Awards



2006 Mississauga Urban Design Awards

Nominations:

Courtneypark Branch Library
730 Courtneypark Drive West

Volvo of Mississauga
797 Bancroft Drive

River Gate
6425-6481 Rivergate Place

Osprey Marsh
6123 Ninth Line

**Carlo Fidani Peel Regional Cancer
Centre at Credit Valley Hospital**
2200 Eglinton Avenue West

Riverwood
1475 & 1477 Burnhamthorpe Road
West

Heritage Orthodontics
1556 Dundas Street West

Triplex Development
9 Benson Avenue

**Cawthra Gardens Long Term
Care Facility**
590 Lolita Gardens

The Capital Condominiums
4080-4090 Living Arts Drive



OFFICE OF THE MAYOR

October 2006

Dear Friends:

This year marks the 25th anniversary of the Mississauga Urban Design Award program. On behalf of the Members of Council of the City of Mississauga, it is my pleasure to congratulate the winners of the 2006 award winners and to acknowledge a quarter century of urban design excellence in Mississauga.

It was a pleasure for me to serve on the jury panel of this special anniversary year and to see first hand the exceptional award submissions that represented outstanding urban design in virtually every sector of Mississauga. You clearly demonstrated that great urban design helps to create great communities.

I would like to congratulate the first recipient of the "People's Choice" award. Your submission is indeed a project that defines our City and raises the profile of Mississauga. I would also like to acknowledge the students who participated in the first "Design the City of the 21st Century" ideas fair and display. Your innovative designs show us the urban design possibilities in Mississauga's future.

In Mississauga, we have much to celebrate. Award winners in the previous 25 years have become prominent landmarks, have changed the city's skyline and today define us as a great city. In future, I look forward to recognizing the great efforts your industry makes to meeting and exceeding our standards for urban design excellence and acknowledging your ongoing contribution to making Mississauga a vibrant and livable city.

I extend my appreciation to the jury. Your time and expertise was invaluable in the decision process. Once again, congratulations to our winners and everyone who submitted designs for consideration in this year's competition.

Sincerely,

**HAZEL McCALLION, C.M.
MAYOR**



2006 Mississauga Urban Design Awards Jury Members

Hazel McCallion, Mayor, City of Mississauga

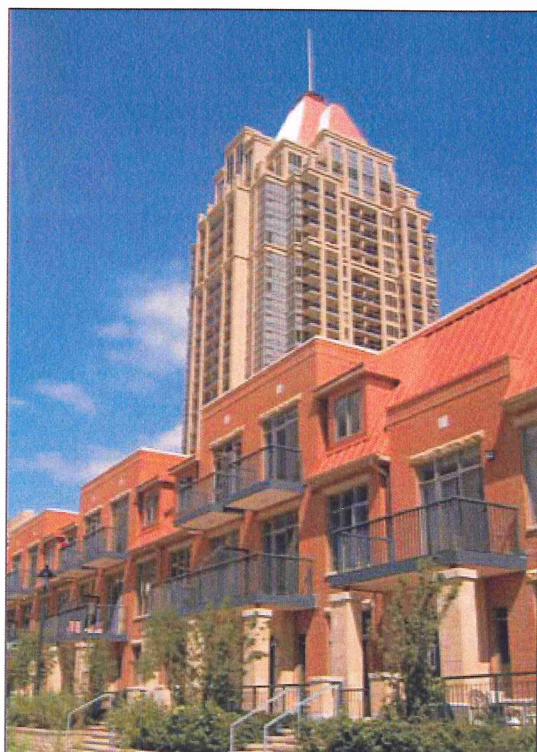
Maurice Nelischer, Director, School of Environmental Design and Rural Development, University of Guelph

Andrea Gabor, Partner, Urban Strategies, Ltd.

Edward R. Sajecki, Commissioner of Planning and Building, City of Mississauga

Rick Drennan, Mississauga Business Times

Michael Spaziani, Principal, Michael Spaziani Architect Inc.



AWARD OF EXCELLENCE

The Capital Condominiums
4080 - 4090 Living Arts Drive

PSCP #771
PSCP #776
Daniels CCW Corporation
Kirkor Architects & Planners
Starr Landscape Inc.

The Capital is an exceptionally designed building that contributes to the creation of a distinct landmark development within Mississauga's City Centre. The bold roof-scape of the two point towers contributes positively to the rapidly changing skyline of the City Centre, while good building massing strategies enhance the ground level experience of the pedestrian. Above-grade parking for the Capital is cleverly concealed behind residential apartment townhouses and the combination of properly proportioned podiums to the surrounding streets and pedestrian mews, with at-grade commercial units, will help to animate the surrounding streets and are a positive addition to the City Centre. The streetscape is well-executed; however, the commercial frontages could be improved in the future for the pedestrian with the addition of more canopies, awnings and innovative signage. While the service and loading entrances and exits are designed in such a way as to minimize their visual impact upon the public streets, the main vehicular drop-off and parking garage entrance disrupts the rhythm of the commercial frontages. The Capital is a positive model for intensification within Mississauga's downtown and helps to raise the bar for design excellence in Mississauga.



Award of Merit for Community Scale Significance

Carlo Fidani Peel Regional Cancer Centre at Credit Valley Hospital
2200 Eglinton Avenue West

Credit Valley Hospital, Cancer Care Ontario
John D. Rogers & Associates Inc.
Farrow Partnership Architects
EDA Collaborative Inc.

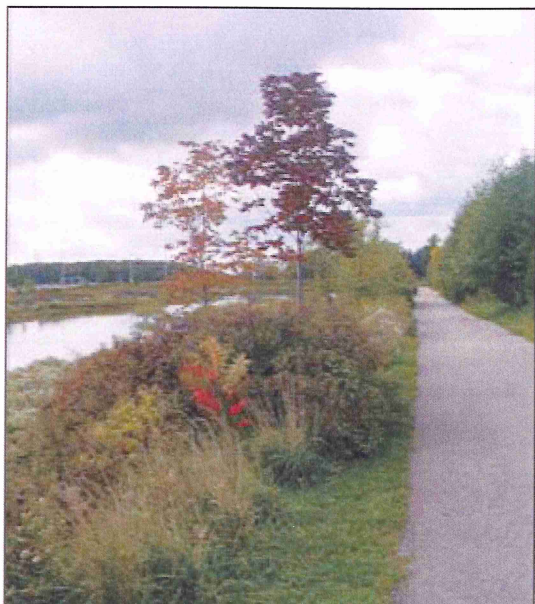
The Credit Valley Hospital, Cancer Care Centre offers a dramatic presence on an otherwise bleak, vehicular-oriented arterial road. Bold architectural design and dramatic sculptural trees, that are visible through transparent glazing, combine to create a powerful streetscape, particularly at night. The Cancer Survivor's park is well-executed and the inclusion of public art and interpretive signage adds an interesting and informative element to the park. The contemplative nature of the park is somewhat impacted by the noise generated by passing automobiles and it is suggested that measures such as the use of additional water elements could be employed to enhance the experience of park users. While the building is a bold piece of architecture and the park is well-executed, it is a struggle to find the connection between these two elements. The Credit Valley Hospital, Cancer Care Centre and the Cancer Survivor's Park are great additions to the surrounding community and truly raises the design bar for hospitals in the Province of Ontario.



Award of Merit for Personal Leadership in Heritage Preservation

Heritage Orthodontics
1556 Dundas Street West

The renovation and addition to the Heritage Orthodontics building shows true leadership in heritage preservation. New life has been given to this impressive building with a restrained approach. Appropriate materials blend well with the historic character of the building and the jury commended the fact that the urge to put parking in front of the building was resisted. The overall impression of the building could be enhanced through additional landscaping; however, the Heritage Orthodontics building will be a cherished asset of the local community for years to come thanks to the admirable work of its present owners.

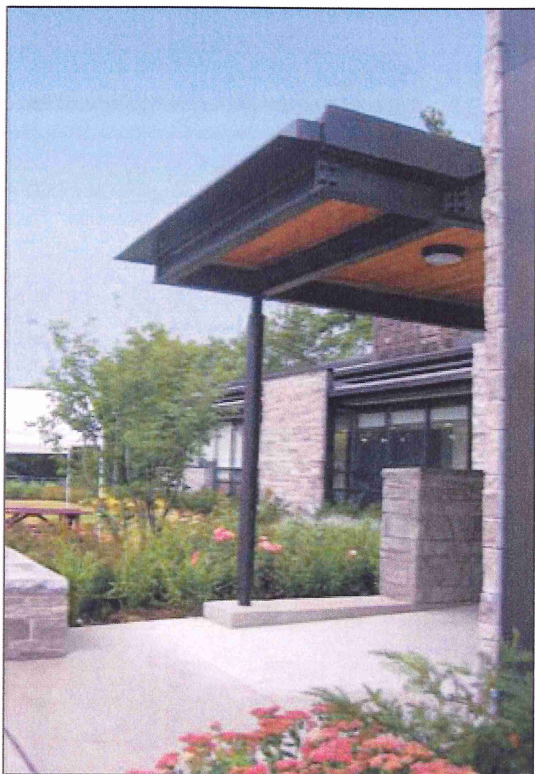


Award of Merit for Community Initiative and Environmental Significance

Osprey Marsh
6123 Ninth Line

City of Mississauga
Lisgar Residents' Association
Rotary Club of Meadowvale

Osprey Marsh provides an excellent example of the positive outcomes of engaging the community in environmental stewardship and community design. The reconstruction of the old concrete storm channel into an attractive storm water management pond not only provides environmental benefits through the filtering of storm water contaminants, but also provided an opportunity to return fish and wildlife to the marshland. Through the addition of pedestrian pathways, extensive tree planting, benches and interpretive signage, the Osprey Marsh has become a well-used recreational jewel for the community. Although public access to the marsh is minimized as a result of rear-lotted private residential homes, Osprey Marsh does still provide an excellent example to the rest of the province on how to bring about positive change for communities through the retrofit of existing under-utilized natural resources.



Award of Merit for Architecture

Riverwood
1475 & 1477 Burnhamthorpe Road West

City of Mississauga
du Toit Architects Limited

Riverwood is an excellent example of a modern building that has been successfully situated into a natural heritage setting. The design of the building maximizes the natural assets of the property and embraces the four seasons. The separation of parking from the building is well thought out and enhances the experience of the site by forcing people to walk through an attractive natural setting to get to the building. The Jury recognized that the site works are not completely finished and suggest that upon completion, Riverwood should be re-submitted to properly evaluate the site works. Riverwood is already establishing itself as a great community asset and upon completion of the site works, it will truly be a gem for the City of Mississauga.