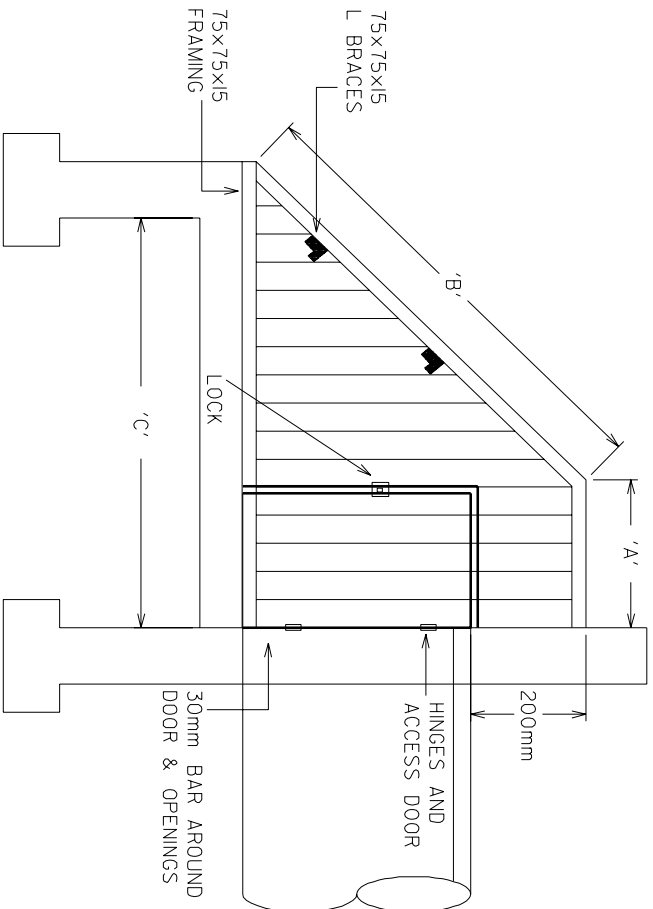
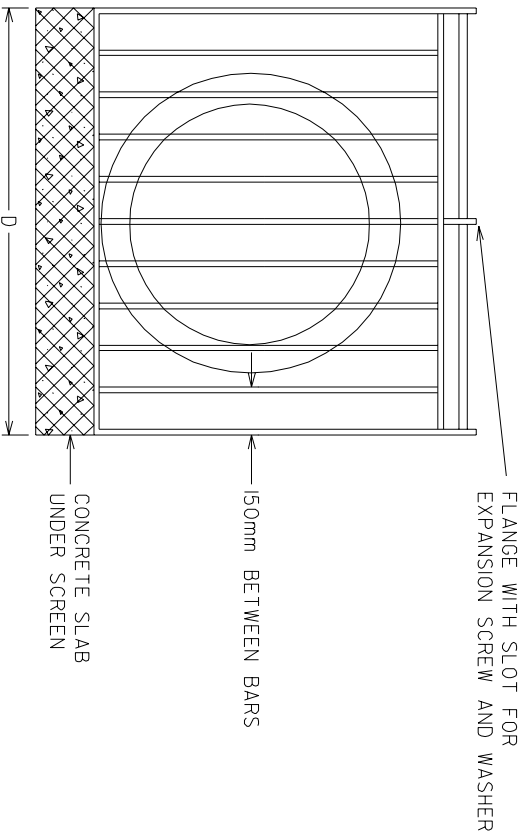


**METRIC**  
ALL DIMENSIONS IN METRES



PIPE DIA.	A	B	C	D	E
900	600	1555	1700	1350	10
975	600	1660	1775	1475	10
1050	600	1770	1850	1575	10
1200	900	1980	2000	1800	10
1350	900	2190	2450	2025	20
1500	900	2400	2600	2250	20
1650	1200	2615	3050	2475	20
1800	1200	2830	3200	2700	20
1950	1200	3040	3350	2925	20
2100	1200	3465	3500	3150	20
2400	1200	3675	3800	3600	20
2550	1200	3890	3950	3825	20
2700	1200	4100	4100	4050	30
2850	1200	4315	4250	4275	30
3000	1200	4525	4400	4500	30

**-NOTES-**

1. ALL STEEL MATERIAL HOT DIP GALVANIZED AFTER FABRICATION.
2. APPROPRIATE HEADWALL AND ENDWALL DETAILS FOR THE INLET STRUCTURE WILL BE BASED ON FIELD CONDITIONS, TO THE SATISFACTION OF THE TRANSPORTATION AND WORKS DEPARTMENT.
3. ALL BOLTS, NUTS AND WASHERS SHALL BE STAINLESS STEEL.
4. ALL WELDS USED IN THE MANUFACTURE OF THE GRATES SHALL BE FULL STRENGTH WELDS
5. THIS STANDARD IS TO BE USED FOR PIPED STORM SEWER SYSTEMS ONLY.
6. MODIFICATION MAY BE NECESSARY TO MATCH EXISTING GRADES.



**STANDARD**

**TRASH RACK GRATE  
FOR STORM INLET  
900 Ø TO 3000 Ø**

EFF. DATE	2002-01-01	SCALE	N.T.S.
REV.		STANDARD No.	212.131