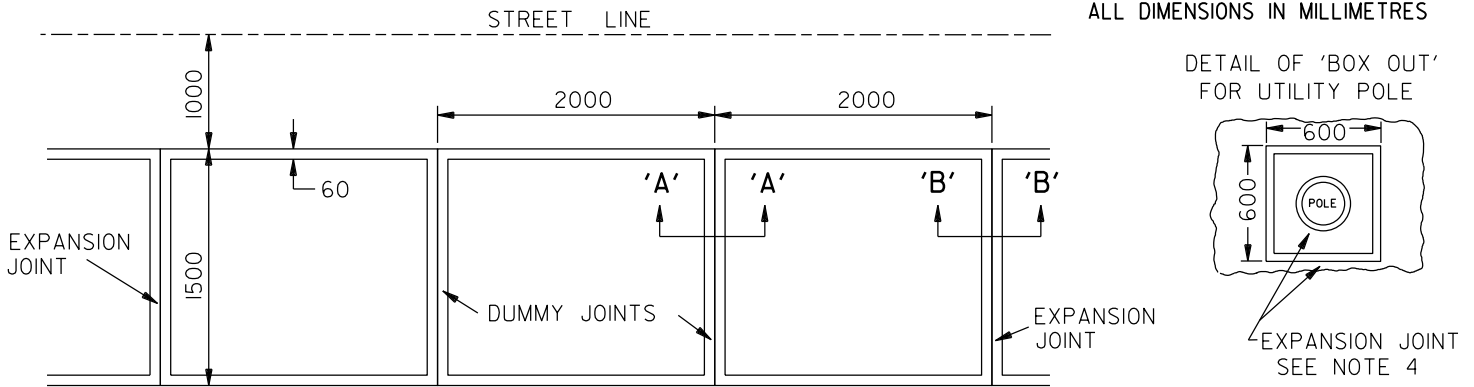
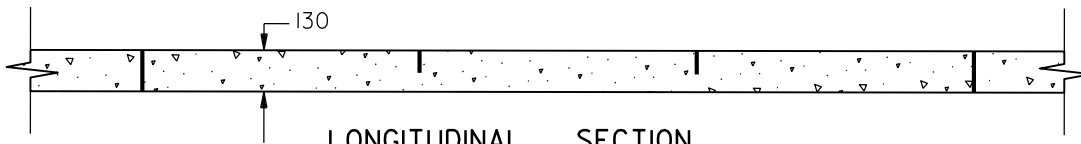


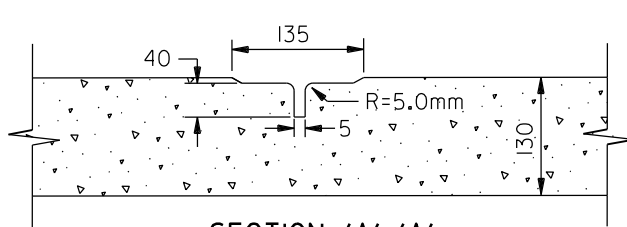
METRIC
ALL DIMENSIONS IN MILLIMETRES



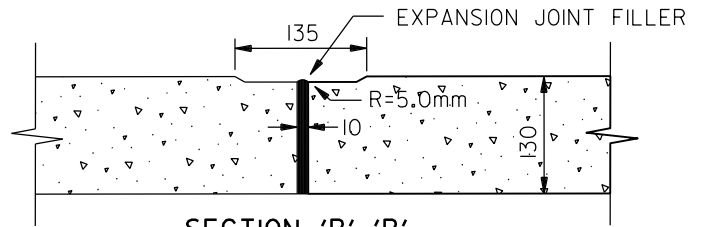
PLAN VIEW



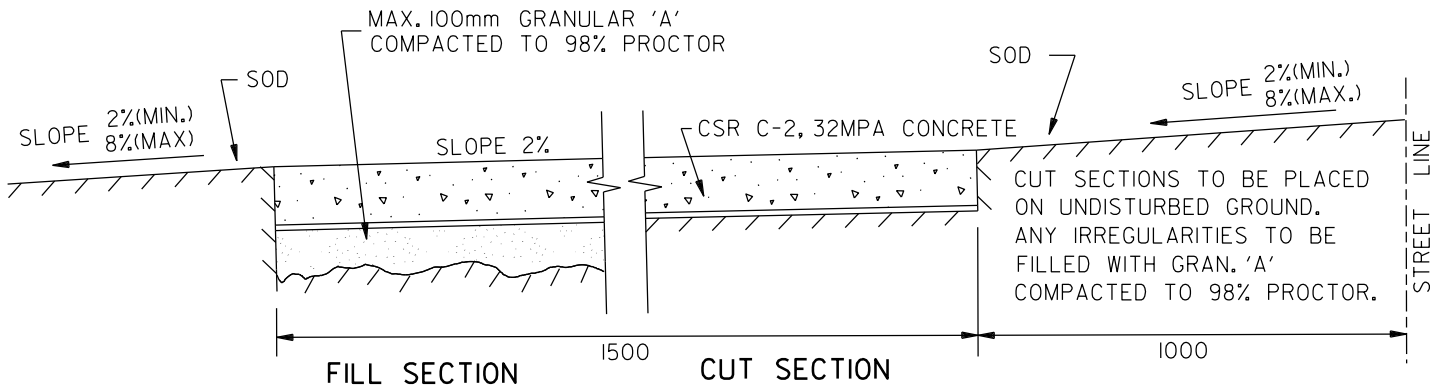
LONGITUDINAL SECTION



SECTION 'A'-'A'
DUMMY JOINT DETAIL



SECTION 'B'-'B'
EXPANSION JOINT DETAIL



FILL SECTION

CUT SECTION

NOTES:

1. DEPTH OF SIDEWALK TO BE 180mm AT COMMERCIAL OR INDUSTRIAL DRIVEWAYS
2. EXPANSION JOINTS ARE REQUIRED IN SIDEWALK AT 6000mm INTERVALS AND:
 - a) BETWEEN SIDEWALK AND ABUTTING CURB
 - b) ADJACENT TO EXISTING STRUCTURES (WALKS, CURBS, UTILITY POLES, HYDRANTS, MANHOLES, ETC.) OR AT THE DISCRETION OF THE COMMISSIONER OF TRANSPORTATION AND WORKS
3. DUMMY JOINTS SHALL HAVE STANDARD SPACING OF 2000mm AND WILL BE FORMED AFTER THE CONCRETE HAS RECEIVED ITS INITIAL SET
4. WHEN SIDEWALKS ARE ADJACENT TO CURBS, EXPANSION JOINTS SHALL COINCIDE WITH THE CURB EXPANSION JOINTS
5. FILL SECTIONS REQUIRING GREATER THAN 100mm TO BE FILLED WITH NATIVE MATERIAL COMPACTED TO 98% PROCTOR



**STANDARD
CONCRETE SIDEWALK**

EFF. DATE	2015-03-27	SCALE	N.T.S.
REV.	4	2015-03-27	STANDARD No. 2240.010