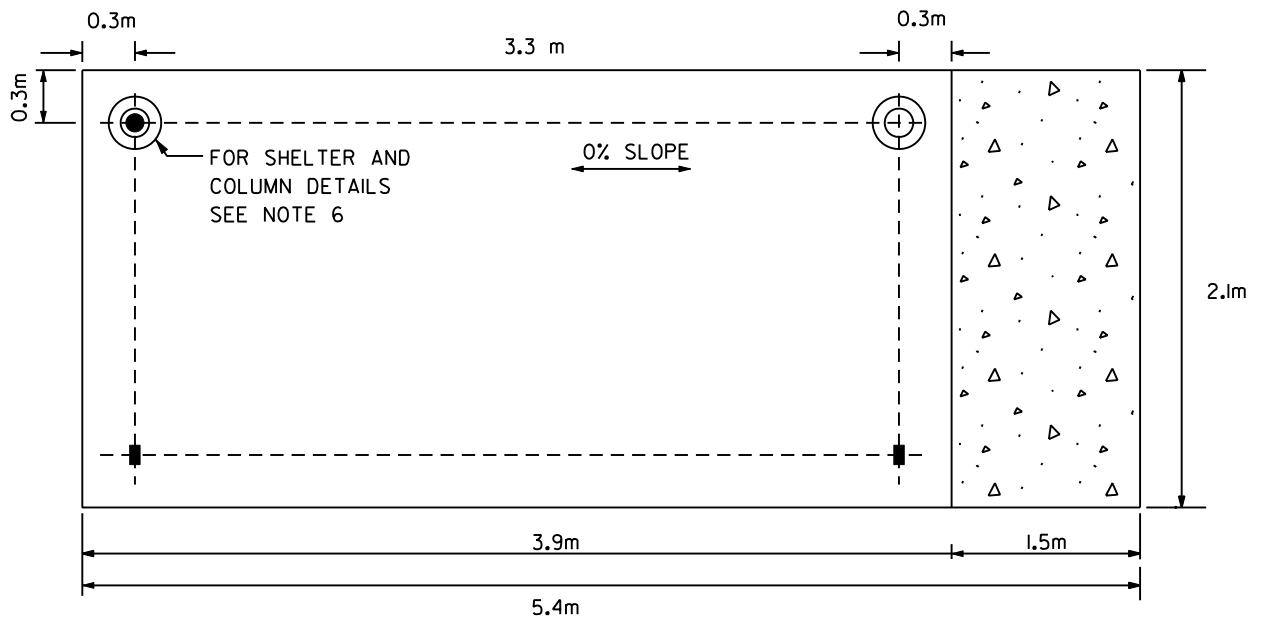
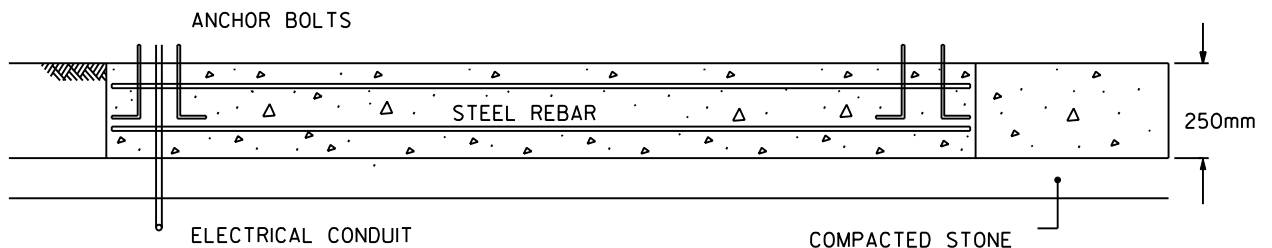


**BUS SHELTER PAD LOCATION (PLAN VIEW)**



**BUS SHELTER PAD (SECTION)**

FOR SHELTER COMPONENTS AND DETAILS SEE NOTE 6



**NOTES**

1. NOT TO SCALE
2. FINAL PAD MAY VARY. DESIGN AND LOCATION TO BE APPROVED BY THE CITY OF MISSISSAUGA.
3. CONCRETE SHALL BE CSA C-2 AND IN ACCORDANCE WITH OPSS 351, OPSS 904 AND OPSS 1350
4. ALL BUS SHELTER PADS AND PLATFORM ARE TO BE SLOPED 2% TOWARDS THE ROAD OR AS OTHERWISE NOTED.
5. WHERE EDGE(S) OF CONCRETE SHELTER PAD ARE ADJACENT TO CURB AND/OR SIDEWALK, ASPHALT IMPREGNATED FIBREBOARD EXPANSION JOINT MATERIAL MUST BE USED.
6. BUS SHELTER DESIGN AND COMPONENTS (ELECTRICAL, CONCRETE REINFORCEMENT, ANCHOR BOLTS) ARE TO BE IN ACCORDANCE WITH CONTRACTOR'S SPECIFICATION AS APPROVED BY THE CITY.
7. 150mm OF GRANULAR 'A' OR 19mm CRUSHED STONE SHALL BE PLACED AND COMPACTED TO A MINIMUM OF 95% STANDARD PROCTOR DENSITY PRIOR TO POURING CONCRETE.
8. CONCRETE SHELTER PAD THICKNESS TO BE 250mm
9. ALL DIMENSIONS ARE IN METRES UNLESS OTHERWISE SHOWN.



**CONCRETE BUS SHELTER PAD**

EFF. DATE: APRIL 2010		SCALE: N.T.S.
REV. 2	DRAWN: JFA	STANDARD No. 2250.030