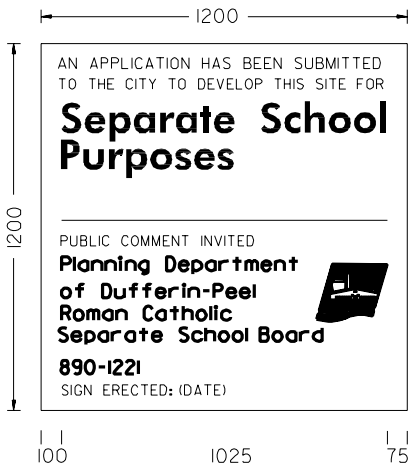
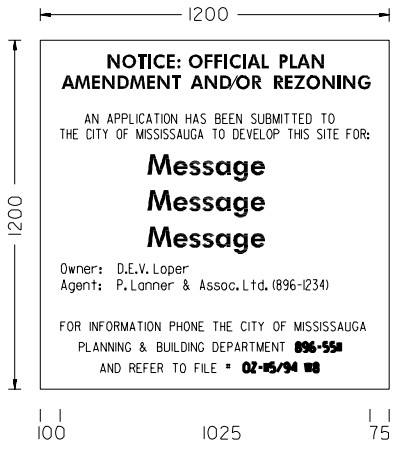
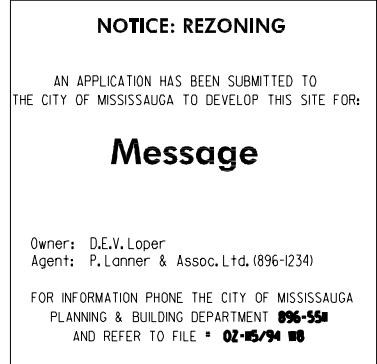
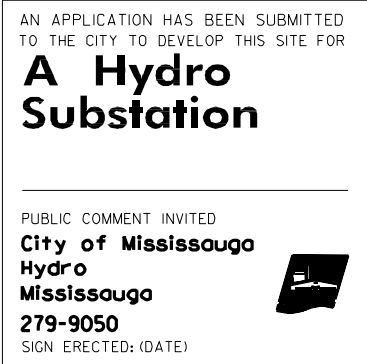
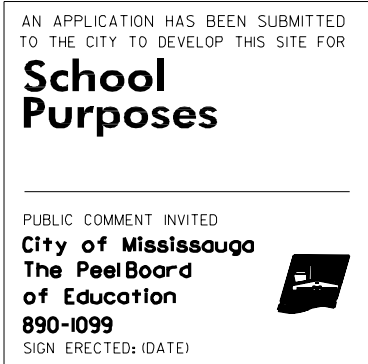


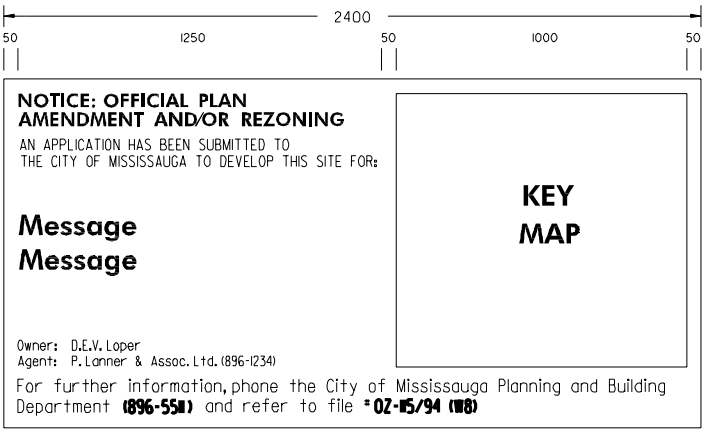
METRIC
ALL DIMENSIONS IN MILLIMETRES



- ===== 50
- ===== 20
- ===== 50(C)
- ===== 20
- ===== 160(B)
- ===== 160(B)
- ===== 160(B)
- ===== 20
- ===== 20
- ===== 50(C)
- ===== 20
- ===== 55(A)
- ===== 55(A)
- ===== 55(A)
- ===== 55(A)
- ===== 20
- ===== 60(A)
- ===== 20
- ===== 50(C)
- ===== 50




- ===== 50
- ===== 50(A)
- ===== 20
- ===== 50(A)
- ===== 75
- ===== 40(B)
- ===== 40(B)
- ===== 50
- ===== 75(A)
- ===== 50
- ===== 75(A)
- ===== 50
- ===== 75(A)
- ===== 50
- ===== 40(B)
- ===== 15
- ===== 40(B)
- ===== 100
- ===== 40(B)
- ===== 20
- ===== 40(B)
- ===== 20
- ===== 40(B)
- ===== 50



NOTES:

TYPEFACE 'A' - FUTURA DEMI-BOLD
 TYPEFACE 'B' - FUTURA DEMI-BOLD CONDENSED
 TYPEFACE 'C' - HELVETICA MEDIUM
 ALL TYPEFACE MAY BE CONDENSED OR EXTENDED TO FIT AREA
 1200 x 1200 SIGN TO BE USED IN CONJUNCTION WITH CITY OF MISSISSAUGA STANDARD 2430.020
 1200 x 2400 SIGN TO BE USED IN CONJUNCTION WITH CITY OF MISSISSAUGA STANDARD 2430.030



STANDARD WORDING FOR SIGNS INDICATING SITES FOR MULTIPLE HOUSING OR NON RESIDENTIAL USE MESSAGES

EFF. DATE	2002-01-01	SCALE	N.T.S.
REV.		STANDARD No.	2430.060