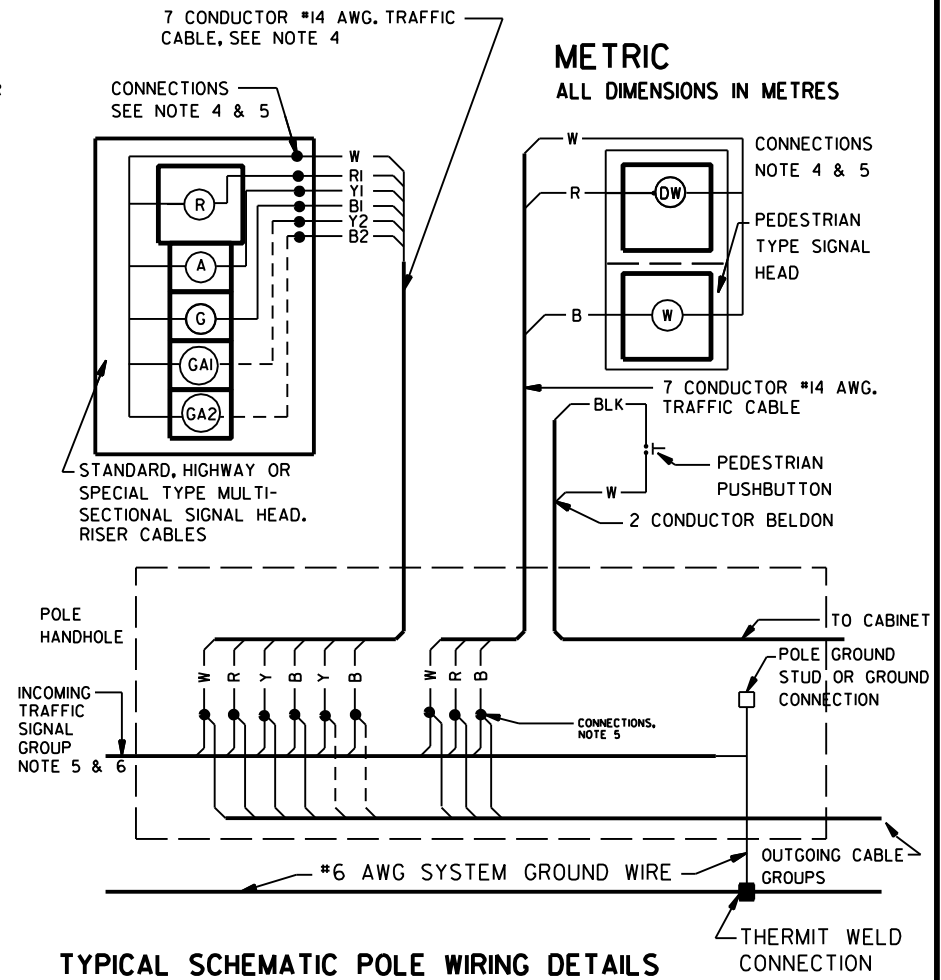



STANDARD WIRING SCHEMATIC

NOTES

1. 12/*14 AWG. TRAFFIC CABLE & 7/ *14 AWG. SIGNAL CABLE AS PER CSA STANDARD C-148-2-1963 SHALL BE RUN COMPLETELY AROUND THE INTERSECTION AND SHALL BE BROUGHT UP INTO THE HANDHOLE OF EACH POLE. ADDITIONAL 7 CONDUCTOR CABLES TO BE RUN WHERE PEDESTRIAN HEADS ARE REQUIRED. ALL CONNECTIONS TO BE MADE AT ABOVE GROUND ELEVATION IN THE POLE HANDHOLE.
2. SIGNAL HEAD AND PUSHBUTTON CONNECTIONS SHALL BE MADE AS SHOWN IN DETAIL.
3. WHERE ADDITIONAL FUNCTIONS ARE REQUIRED, ADDITIONAL 7 CONDUCTOR CABLE SHALL BE RUN TO THE POLES CONCERNED.
4. ALL SIGNAL HEAD RISER CABLES (FROM THE POLE HANDHOLES) SHALL BE 7 CONDUCTOR CABLE, WITH UNUSED CONDUCTORS TERMINATED WITH INSULATED SPRING TYPE CONNECTORS.
5. ALL HANDHOLE CONNECTIONS AND TERMINATIONS SHALL BE MADE WITH INSULATED SPRING TYPE CONNECTORS, MARR No.33 OR EQUAL. BUNDLE AND TAPE ALL GROUPS OF CONNECTORS NEATLY IN POLE HANDHOLE. LEAVE 1500mm LOOPS OF EACH CABLE COILED IN THE NEAREST HANDWELL AND 500mm IN EACH POLE.
6. ALL CONDUCTORS DESIGNATED AS GROUND SHALL BE BONDED AT THE POLE GROUND STUD. A #6 AWG TYPE TWU (GREEN) SYSTEM GROUND WIRE SHALL BE RUN CONTINUOUSLY THROUGH THE SYSTEM AND CONNECTED TO EACH POLE GROUND STUD AND FIELD GROUND PLATES.



TYPICAL SCHEMATIC POLE WIRING DETAILS



MISSISSAUGA
Leading today for tomorrow

**STANDARD
TYPICAL TRAFFIC SIGNAL
WIRING DETAILS**

EFF. DATE	83-06	SCALE	N.T.S.
REV.	1	0102	STANDARD No. 2600.012