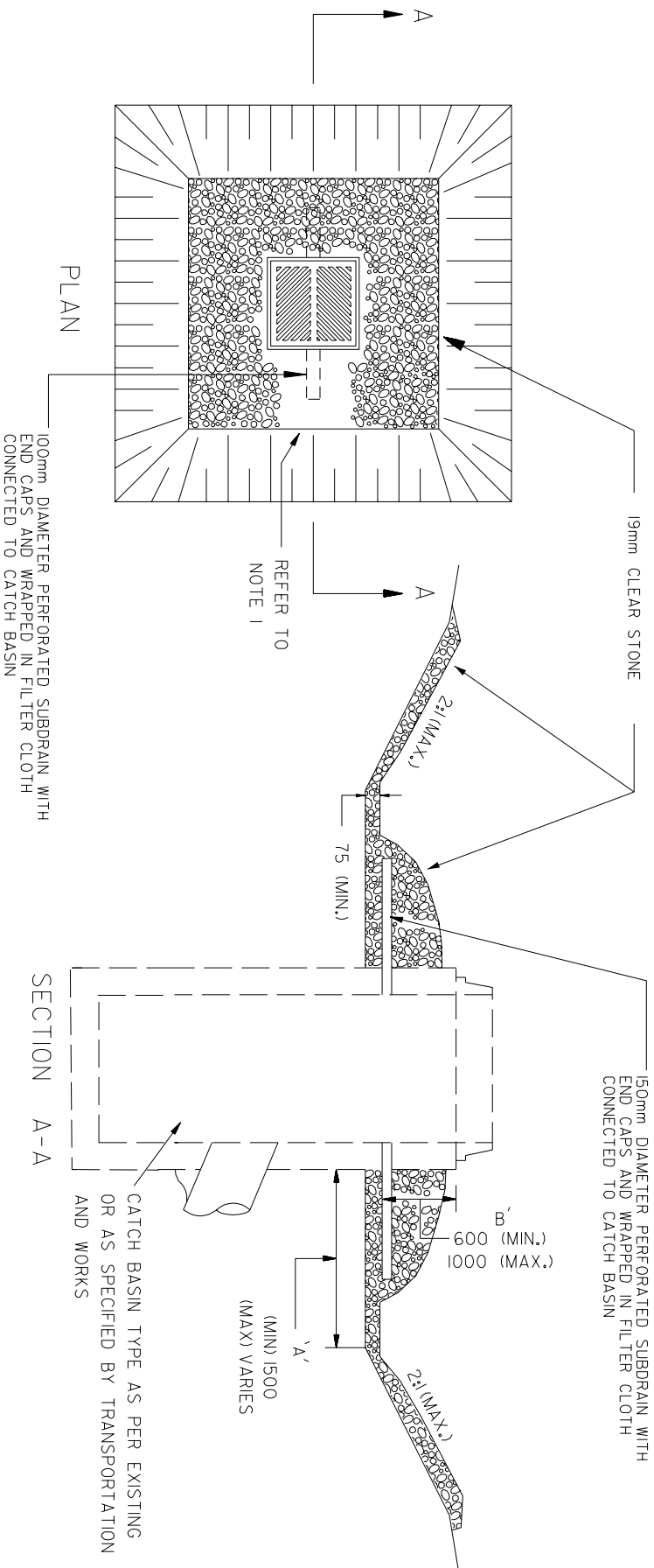


METRIC
ALL DIMENSIONS IN MILLIMETRES



NOTES:

1. VOLUME OF SEDIMENT TRAP TO BE $125m^3$ PER HECTARE OF DRAINAGE. DEPTH TO BE CALCULATED FROM TOP OF CATCH BASIN TO BOTTOM OF TRAP (DIMENSION 'B')
2. MINIMUM DEPTH FROM TOP OF CATCH BASIN TO BOTTOM OF TRAP SHALL BE 600mm, MAXIMUM DEPTH SHALL BE 1000mm, MINIMUM "A" DIMENSION 1500mm, MAXIMUM DIMENSION VARIES
3. SEDIMENT TRAP TO BE CLEANED AS DEEMED NECESSARY BUT AS A MINIMUM WHEN THE DEPTH FROM UNDERSIDE OF FRAME TO TOP OF SILT IS REDUCED TO 300mm.
4. UPON REMOVAL OF TRAP, CATCH BASIN CONNECTION HOLES TO BE PARGED WITH CONCRETE.



STANDARD

CATCH BASIN SEDIMENT TRAP
UNPAVED AREAS DRAINING
2.0 ha TO 4.0 ha

EFF. DATE	2002-01-01	SCALE	N.T.S.
REV.		STANDARD No.	2930.010