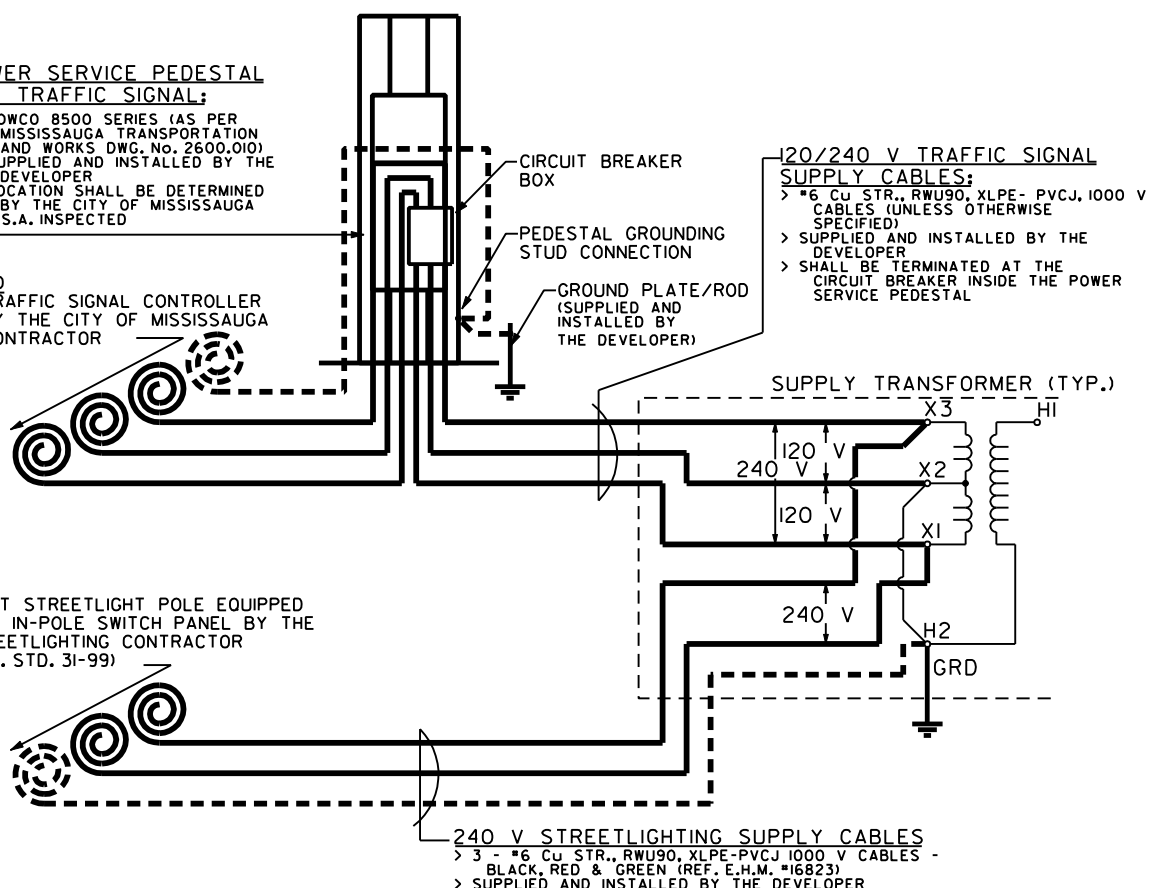


**POWER SERVICE PEDESTAL
FOR TRAFFIC SIGNAL;**

- > POWCO 8500 SERIES (AS PER MISSISSAUGA TRANSPORTATION AND WORKS DWG. No. 2600,010)
- > SUPPLIED AND INSTALLED BY THE DEVELOPER
- > LOCATION SHALL BE DETERMINED BY THE CITY OF MISSISSAUGA
- > E.S.A. INSPECTED

TO
TRAFFIC SIGNAL CONTROLLER
BY THE CITY OF MISSISSAUGA
CONTRACTOR

TO
FIRST STREETLIGHT POLE EQUIPPED
WITH IN-POLE SWITCH PANEL BY THE
STREETLIGHTING CONTRACTOR
(REF. STD. 31-99)



NOTES:

1. THE CABLES AND COMPRESSION LUGS SHALL BE OF A TYPE APPROVED BY ENERSOURCE HYDRO MISSISSAUGA.
2. THE DEVELOPER SHALL SUPPLY COMPRESSION LUGS AT TRANSFORMER SUPPLY POINT.
3. TRAFFIC SIGNAL SUPPLY CABLES SHALL BE INSTALLED IN A MINIMUM 75 mm RIGID PVC DUCT (CSA APPROVED) OR F.R.E. TYPE DIRECT BURIED DUCTS (CSA APPROVED).
4. POWER SERVICE PEDESTAL FOR TRAFFIC SIGNAL SHALL BE OWNED, OPERATED AND MAINTAINED BY THE CITY OF MISSISSAUGA.
5. STREETLIGHTING CABLES SHALL BE INSTALLED IN A 50 mm PVC DB2/ES2 DIRECT BURIED DUCT.
6. DO NOT ENERGIZE TRAFFIC SIGNAL SUPPLY CABLES AT THE TRANSFORMER BEFORE RECEIPT OF THE 'SERVICE CONNECTION ORDER'.



MISSISSAUGA
Leading today for tomorrow

STANDARD

STREET LIGHTING
SUPPLY 240V & TRAFFIC LIGHTS
SUPPLY 120/240V

METRIC

ALL DIMENSIONS IN MILLIMETRES

EFF. DATE	2002-01-01	SCALE	N.T.S.
REV.		STANDARD No.	3100.050