

NOTES:

1. ALL DIMENSIONS SHOWN ARE FROM TOP OF POLE, UNLESS OTHERWISE INDICATED.
2. ALL HOLES SHALL BE 19 mm (3/4") IN DIAMETER.
3. IN ALL CASES, IDENTICAL HOLES SHALL BE PLACED 25 mm (1") BELOW, AND 90° TO DIMENSIONED HOLES.
4. POLE SHALL BE ROUND SPUN CONCRETE AND MANUFACTURED TO MEET C.S.A. CLASS SPECIFICATIONS.
5. RACEWAYS SHALL BE 50 mm (2") MINIMUM DIAMETER.
6. TORSIONAL TOP STRENGTH SHALL BE 2400 FT. LBS. MINIMUM.
7. REINFORCING RODS SHALL BE BONDED TO GROUND CONNECTOR.
8. GROUND WIRE PER H.M. STANDARDS DWG. #5-S12-1U.
9. POLE SHALL BE MANUFACTURED ACCORDING TO HYDRO MISSISSAUGA SPECIFICATIONS S12-1 (LATEST REVISION).
10. THIS HOLE IS FOR THE PURPOSE OF PREVENTING SLING SLIPPAGE DURING MATERIAL HANDLING.

*A - 57 mm X 89 mm (2-1/4" X 3-1/2") UPPER WIRING APERTURE IN ONE SIDE ONLY.

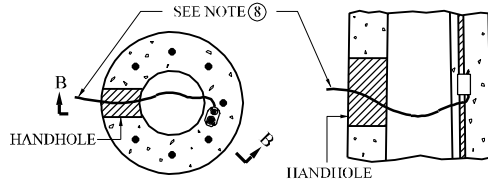
*B - POLE IDENTIFICATION MARK SHOULD BE LOCATED 0° FROM HANDHOLE OR 90° TO LEFT OF UPPER APERTURE.

*C - HANDHOLE AND COVER TO BE LOCATED AT 90° TO THE LEFT OF THE UPPER APERTURE.

89 mm X 267 mm (3-1/2" X 10-1/2") HANDHOLE. REFER TO H.M. STANDARDS DWG. #5-S12-1X FOR HANDHOLE FRAME AND COVER DETAIL.

*D - BOTTOM WIRING APERTURE TO BE LOCATED 90° BOTH SIDES OF UPPER WIRING APERTURE.

64 mm X 127 mm (2-1/2" X 5") BOTTOM WIRING APERTURE IN BOTH SIDES.



SECTION 'A-A'
N.T.S.

SECTION 'B-B'
N.T.S.

**9.9 m (32.5 ft.) CLASS A CENTRIFUGALLY CAST
ROUND CONCRETE STREETLIGHT POLE STANDARD DETAIL**



STANDARD
9.9 m (32.5 ft) CLASS A
CENTRIFUGALLY CAST ROUND
CONCRETE STREETLIGHT
POLE DETAIL

EFF. DATE	2002-01-01	SCALE	N.T.S.
REV.		STANDARD No.	3100.080