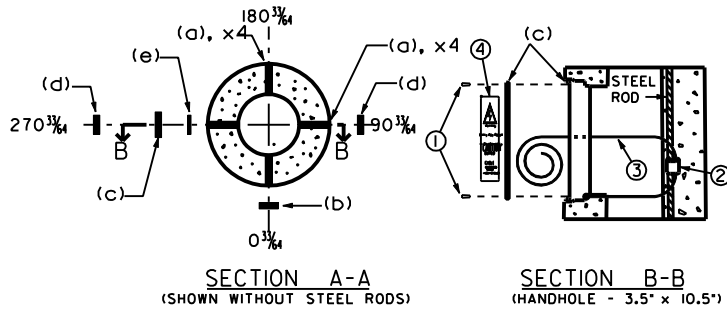


NOTES:

1. ALL DIMENSIONS SHOWN ARE FROM TOP OF POLE, EXCEPT AS NOTED.
2. ALL HOLES SHALL BE $\frac{3}{4}$ " IN DIAMETER.
3. IN ALL CASES, IDENTICAL HOLES SHALL BE PLACED 1" BELOW, AND $90\frac{3}{4}$ " TO DIMENSIONED HOLES.
4. RACEWAYS SHALL BE 2" MINIMUM DIAMETER.
5. POLE SHALL BE PARTIALLY PRESTRESSED AND BE MADE IN ACCORDANCE WITH CSA STANDARD A14-00 (OR LATEST EDITION) AND THIS DRAWING.
6. REFER TO STANDARD 5-8 TO 5-10 FOR PURCHASING REQUIREMENTS.
7. THE PURPOSE OF THESE HOLES IS TO PREVENT SLING SLIPPAGE DURING MATERIAL HANDLING.



| Item | Description | Qty |
|------|--|---------|
| (a) | 3/4" DIAMETER FORMED THROUGH HOLE | 8 |
| (b) | WIRING APERTURE, 2.25' X 3.5' (POLE TOP) | 1 |
| (c) | CAST METALLIC HANDHOLE FRAME AND COVER, 3.5' X 10.5' C/W WARNING DECAL | 1 |
| (d) | WIRING APERTURE, 2.5' X 5' (BELOW GRADE) | 2 |
| (e) | POLE IDENTIFICATION PLATE | 1 |
| (f) | CAPSEAL X75 OR DISTRIBUTOR'S APPROVED EQUIVALENT, 12" HIGH | 2 coats |
| ① | 1/4" - 20 x 3/4" TAMPER PROOF ALLEN KEY BUTTON PAN HEAD STAINLESS STEEL | 2 |
| ② | DOUBLE CRIMP CONNECTOR | 1 |
| ③ | *6 AWG (MINIMUM) STRANDED COPPER WIRE; -CRIMPED TO STEEL ROD AND HANDHOLE FRAME -EXTENDED 12' OUTSIDE HANDHOLE | ++ |
| ④ | WARNING DECAL AS PER STANDARD 5-125 | 1 |

++ - LENGTH TO SUIT

METRIC/IMPERIAL
DIMENSIONS SHOWN IN METRIC AND IMPERIAL UNITS



MISSISSAUGA
Leading today for tomorrow

STANDARD
12.2 m (40 ft) CLASS B
CENTRIFUGALLY CAST ROUND
CONCRETE STREETLIGHT
POLE DETAIL

| | | | |
|-----------|------------|--------------|----------|
| EFF. DATE | 2002-01-01 | SCALE | N.T.S. |
| REV. | 2006-05-24 | STANDARD No. | 3100.090 |