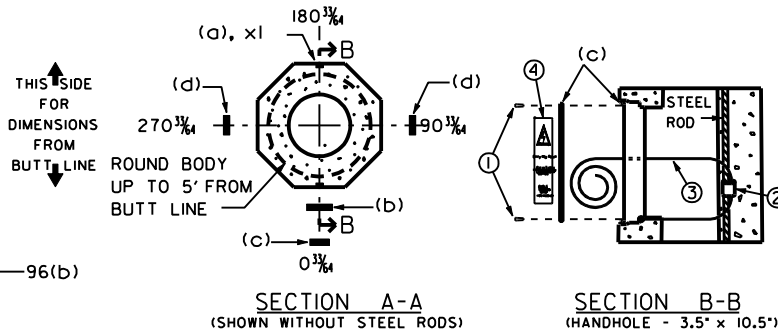


NOTES:

1. ALL DIMENSIONS SHOWN ARE FROM TOP OF POLE, EXCEPT AS NOTED.
2. HOLE SHALL BE 1" IN DIAMETER.
3. RACEWAYS SHALL BE 2" MINIMUM DIAMETER.
4. POLE SHALL BE PRESTRESSED AND BE MADE IN ACCORDANCE WITH CSA STANDARD A14-00 (OR LATEST EDITION) AND THIS DRAWING.
5. REFER TO STANDARD 5-8 TO 5-10 FOR PURCHASING REQUIREMENTS.



Item	Description	Qty
(a)	1" DIAMETER FORMED THROUGH HOLE	1
(b)	WIRING APERTURE, 2.25" X 3.5" (POLE TOP)	1
(c)	CAST METALLIC HANDHOLE FRAME AND COVER, 3.5" X 10.5" c/w WARNING DECAL	1
(d)	WIRING APERTURE, 2.5" X 5" (BELOW GRADE)	2
(e)	POLE IDENTIFICATION PLATE	1
(f)	CAPSEAL X75 OR DISTRIBUTOR'S APPROVED EQUIVALENT, 12' HIGH	2 coats
①	1/4" - 20 x 3/4" TAMPER PROOF ALLEN KEY BUTTON PAN HEAD STAINLESS STEEL	2
②	DOUBLE CRIMP CONNECTOR	1
③	*6 AWG (MINIMUM) STRANDED COPPER WIRE: -CRIMPED TO STEEL ROD AND HANDHOLE FRAME-EXTENDED 12" OUTSIDE HANDHOLE	**
④	WARNING DECAL AS PER STANDARD 5-125	1

** - LENGTH TO SUIT

METRIC/IMPERIAL

DIMENSIONS SHOWN IN METRIC AND IMPERIAL UNITS



STANDARD
8.2 m (27 ft+) CLASS B
DECORATIVE CONCRETE STREETLIGHT
POLE STANDARD DETAIL

EFF. DATE	2002-01-01	SCALE	N.T.S.
REV.		STANDARD No.	3100.140