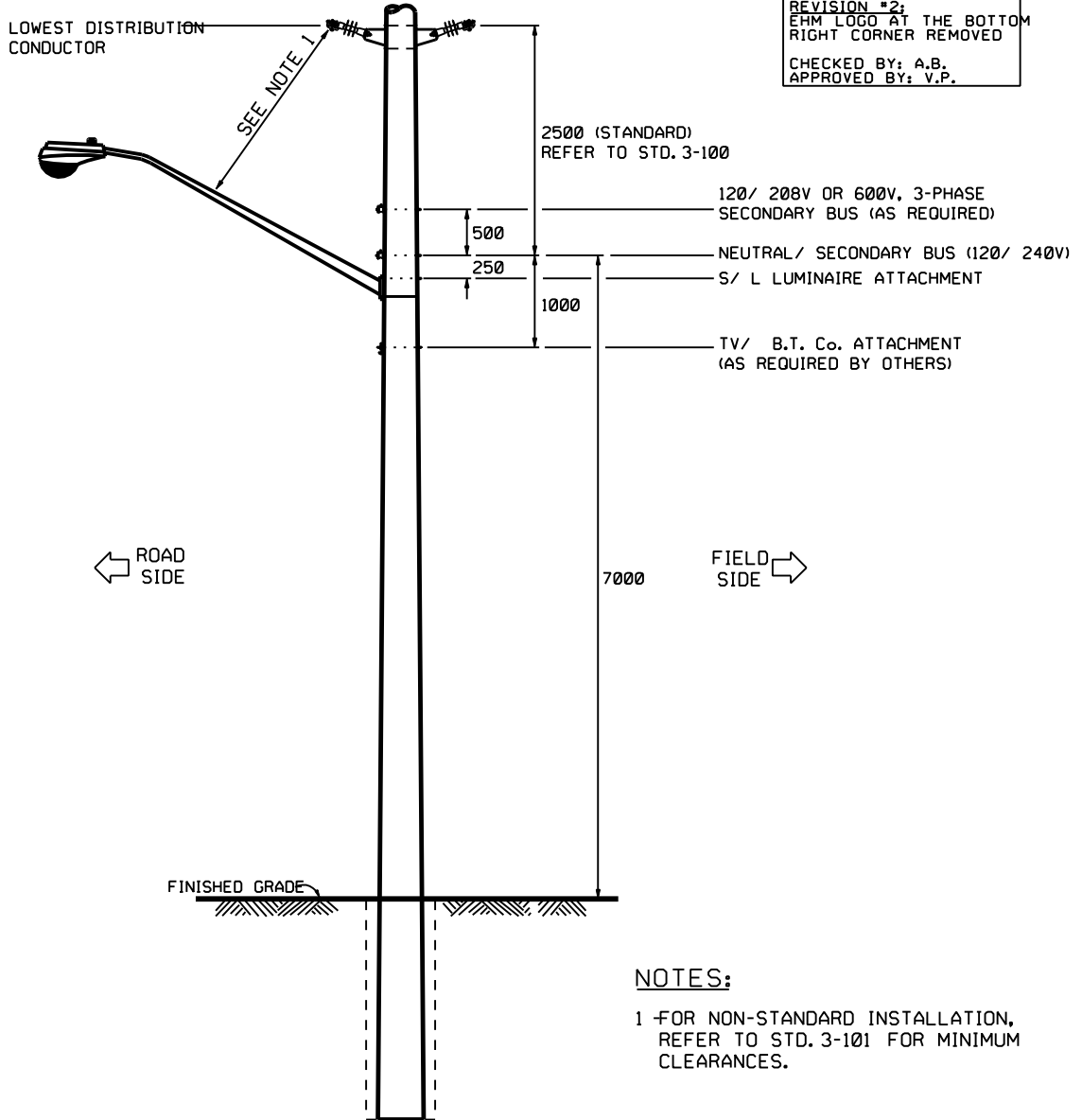


ENERSOURCE
HYDRO MISSISSAUGA

31-130
R2 (DEC 2005)

REVISION #2;
EHM LOGO AT THE BOTTOM
RIGHT CORNER REMOVED
CHECKED BY: A.B.
APPROVED BY: V.P.



NOTES:

1 FOR NON-STANDARD INSTALLATION,
REFER TO STD. 3-101 FOR MINIMUM
CLEARANCES.

ORIGINAL;
CHECKED BY : S.N.
APPROVED BY : D.T.
DATE : Jun-1997



TYPICAL
LUMINAIRE MOUNTING HEIGHT
ON EXISTING
HYDRO DISTRIBUTION POLE

METRIC
ALL DIMENSIONS IN MILLIMETRES

EFF. DATE	2002-01-01	SCALE	N.T.S.
REV.	2006-05-24	STANDARD No.	3100.190