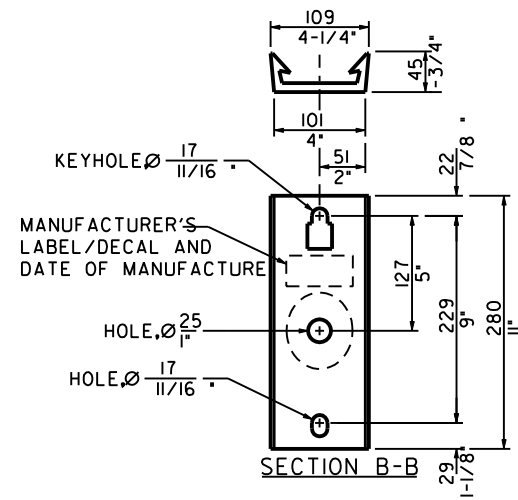
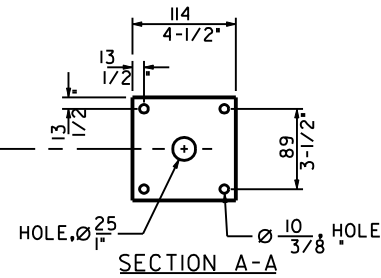
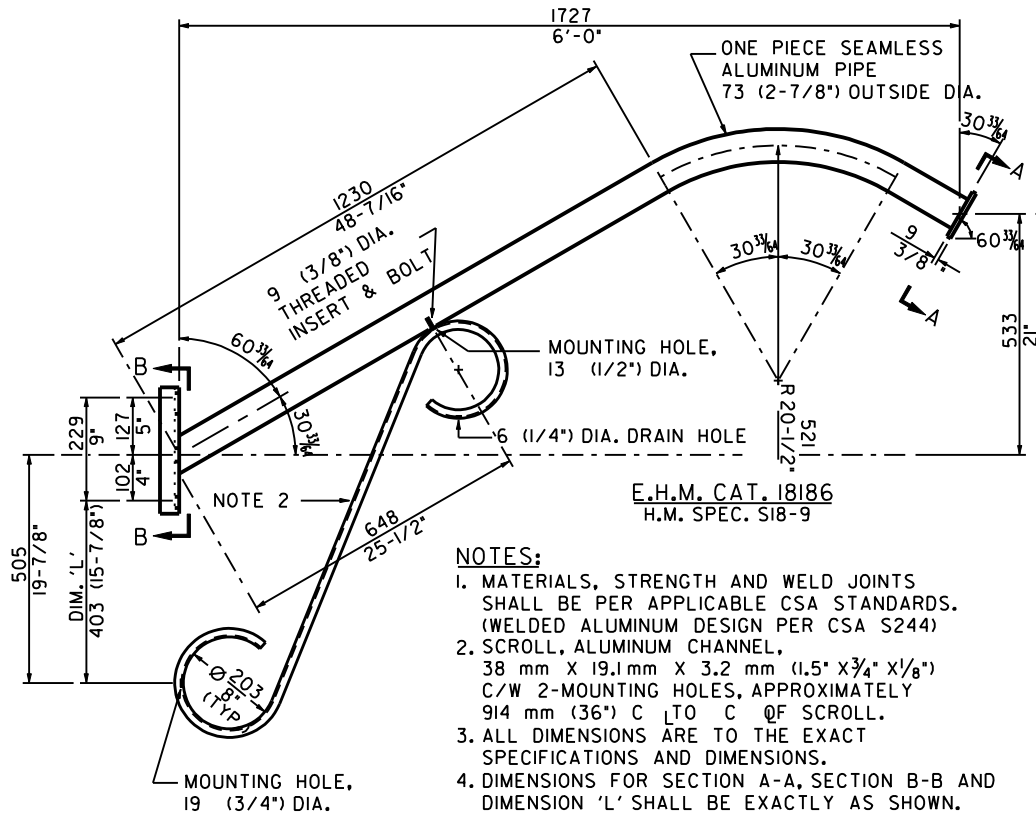


ENERSOURCE
HYDRO MISSISSAUGA


31-131
R4 (DEC 2005)



- NOTES:**
1. MATERIALS, STRENGTH AND WELD JOINTS SHALL BE PER APPLICABLE CSA STANDARDS. (WELDED ALUMINUM DESIGN PER CSA S244)
 2. SCROLL, ALUMINUM CHANNEL, 38 mm X 19.1mm X 3.2 mm (1.5\" X 3/4\" X 1/8\") C/W 2-MOUNTING HOLES, APPROXIMATELY 914 mm (36\") C TO C @ SCROLL.
 3. ALL DIMENSIONS ARE TO THE EXACT SPECIFICATIONS AND DIMENSIONS.
 4. DIMENSIONS FOR SECTION A-A, SECTION B-B AND DIMENSION 'L' SHALL BE EXACTLY AS SHOWN.

E.H.M. CAT. 18186
H.M. SPEC. S18-9

METRIC
ALL DIMENSIONS IN MILLIMETRES



MISSISSAUGA
Leading today for tomorrow

STANDARD

**STREETLIGHTING 6 ft. VICTORIAN
STYLE ALUMINUM BRACKET
(SPRINGDALE)**

EFF. DATE	2002-01-01	SCALE	N.T.S.
REV.		STANDARD No.	3100.200