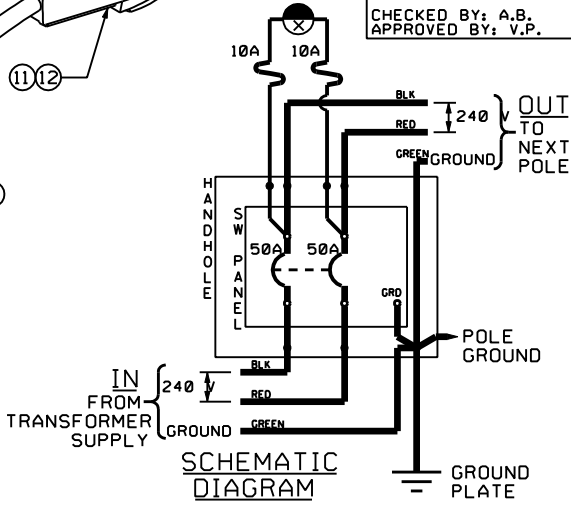


REVISION #2;
ITEMS 2,9,&10 ADDED
CHECKED BY: A.B.
APPROVED BY: V.P.



BILL OF MATERIALS
(REF. STORES & MATERIAL CATALOGUE)

ITEM#	DESCRIPTION	QTY	PART No.
1	BOLT, MACHINE, 5/8" x 10"	2	10088
2	BOOT, INSULATING	4	14756
3	BRACKET, LUMINAIRE, 8'	1	18187
4	CABLE, 2-#14 CU SOLID, PVCJ, 600 V	++	16298
5	CABLE, 3-#6 CU STR, RWU90, XLPE, 1000 V	++	16823
6	CONNECTOR, BLUE WING-NUT	4	99120
7	CONNECTOR, SPLIT BOLT	1	33013
8	CONNECTOR, I-BOLT CLAMP	1	33002
9	FUSE, CARTRIDGE, 10 A	2	14761
10	FUSE HOLDER, IN-LINE, DOUBLE POLE, 30A, 600V	1	14755
11	LAMP, H.P.S., 70W/52V	1 ONLY	21032
	LAMP, H.P.S., 100W/55V		21034
	LAMP, H.P.S., 250W/100V		21035
	LAMP, H.P.S., 400W/100V		21040
12	LUMINAIRE, J20/240V, FOR 70W	1 ONLY	18422
	LUMINAIRE, J20/240V, FOR 100W		18427
	LUMINAIRE, J20/240V, FOR 250W		18431
	LUMINAIRE, J20/240V, FOR 400W		18435
13	MARKER, LETTER "B"	1	18600
14	PANEL, SWITCH, IN-POLE, C/W 2-50 A BREAKER	1	18517
15	PLATE, GROUND, 10" x 16", CSA APPROVED	1	N/A
16	PHOTOCELL, 240 V	1	18507
17	WASHER, SO, FLAT, 2"x2"	2	99592

++ - LENGTH/QUANTITY/SIZE TO SUIT

NOTE
1. LEAVE FLEXIBLE BREAKER LEADS LONGER THAN CABLE TAILS TO FACILITATE EASIER BREAKER INSTALLATION IN HANDHOLE.



STANDARD
STREETLIGHTING
240V U/G SYSTEM DESIGN
(AT FIRST POLE HANDHOLE)

METRIC
ALL DIMENSIONS IN MILLIMETRES

EFF. DATE	2002-01-01	SCALE	N.T.S.
REV.	2006-05-24	STANDARD No.	3100.280