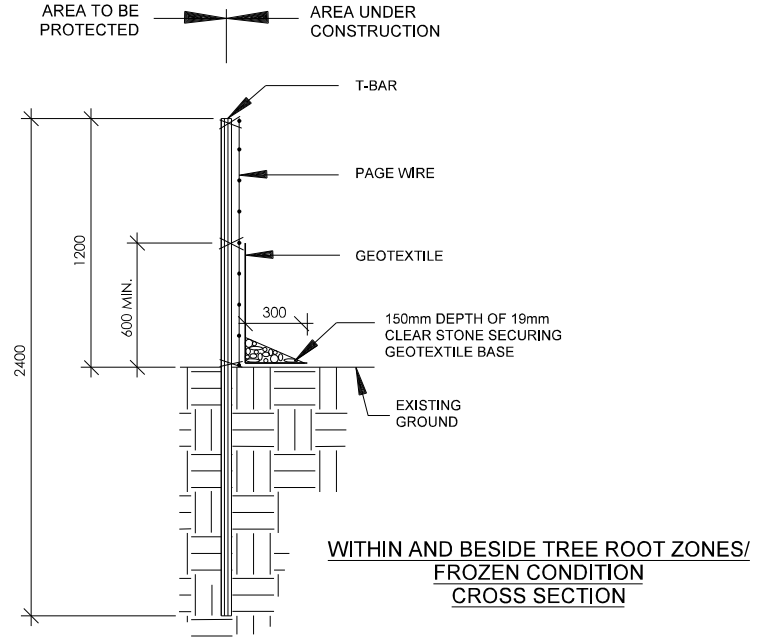
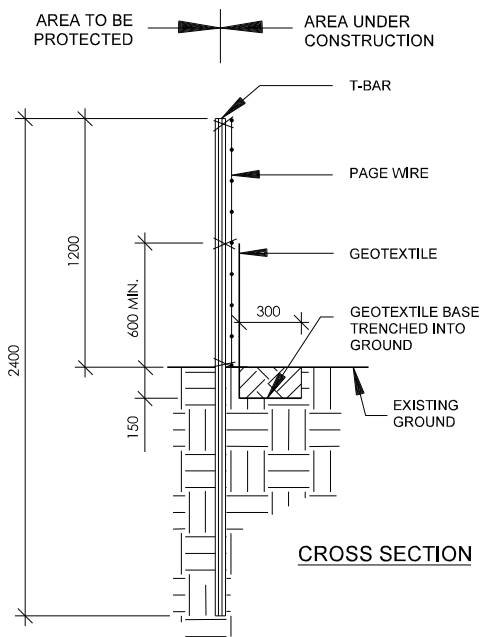
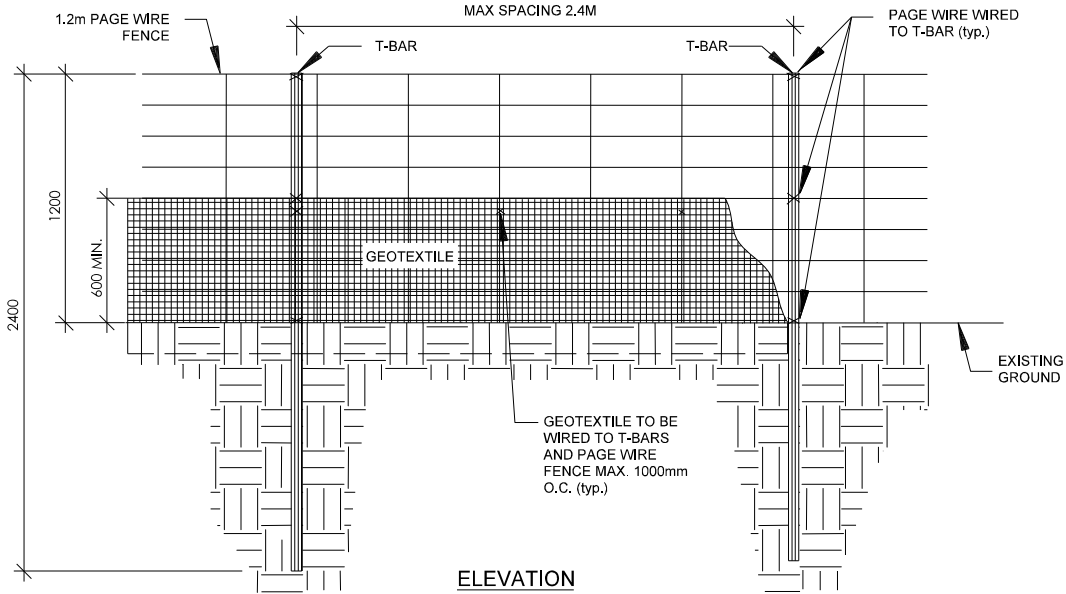


# 02830-4

## Hoarding Page Wire Hoarding

**NOTE:**  
TO BE USED AS A GUIDELINE ONLY.  
NOT TO SCALE. REMOVE CITY TITLE BLOCK  
AND REDRAW TO REPRESENT SITE SPECIFIC  
CONDITIONS. ALL SITE SPECIFIC CONDITIONS  
ARE TO BE CONFIRMED BY THE PROJECT  
CONSULTANT.



**NOTES:**

1. ALL DIMENSIONS IN MILLIMETRES UNLESS OTHERWISE NOTED.
2. IT IS THE CONTRACTOR'S RESPONSIBILITY TO OBTAIN LOCATES OF ALL EXISTING UTILITIES AND SERVICING PRIOR TO INSTALLING HOARDING.
3. DO NOT DAMAGE VISIBLE TREE ROOTS WHEN INSTALLING T-BARS.
4. GEOTEXTILE TO BE WOVEN OR NON WOVEN. MINIMUM EQUIVALENT OPENING SIZE IS 0.15mm AND MAXIMUM EQUIVALENT OPENING SIZE IS 0.25mm.
5. GEOTEXTILE TO HAVE HORIZONTAL OVERLAP OF 1000mm MINIMUM AT JOINTS.
6. HOARDING MUST BE MAINTAINED IN SOUND CONDITION THROUGH ALL PHASES OF CONSTRUCTION UNTIL APPROVAL TO REMOVE HOARDING IS OBTAINED FROM THE COMMUNITY SERVICES DEPARTMENT.
7. LOCATES ARE REQUIRED PRIOR TO INSTALLATION/DRIVING OF STEEL BARS