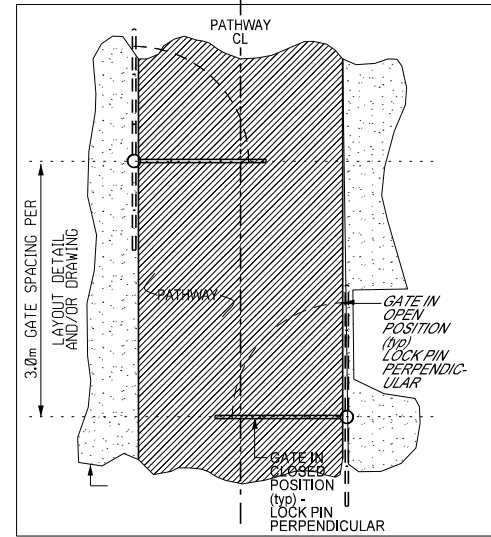
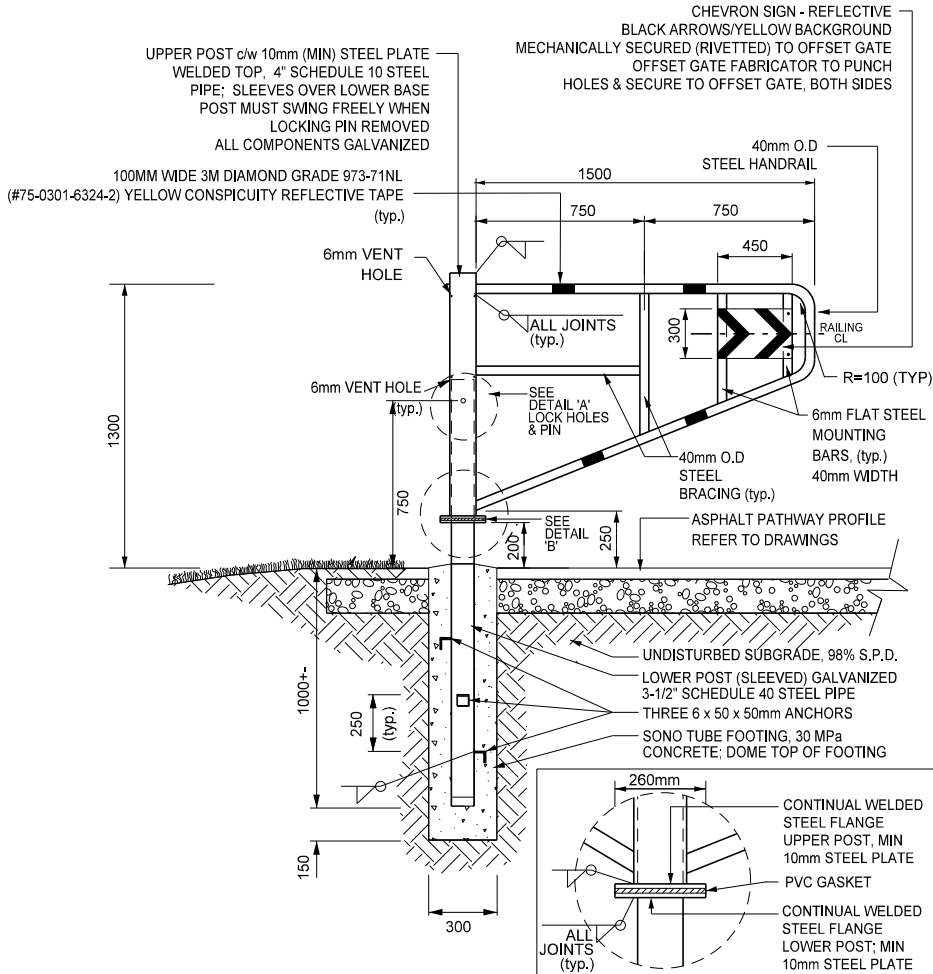


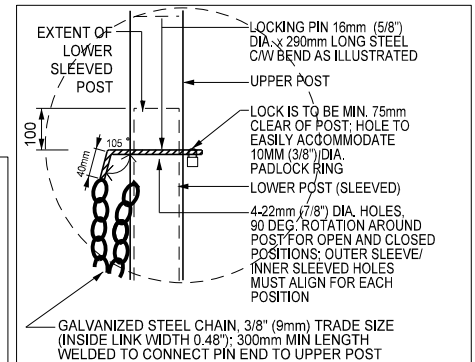
02870-2

Gates Removable Offse Gate

NOTE:
TO BE USED AS A GUIDELINE ONLY.
NOT TO SCALE. REMOVE CITY TITLE BLOCK
AND REDRAW TO REPRESENT SITE SPECIFIC
CONDITIONS. ALL SITE SPECIFIC CONDITIONS
ARE TO BE CONFIRMED BY THE PROJECT
CONSULTANT.



DETAIL - OPEN AND CLOSED GATE POSITIONS - not to scale



DETAIL 'A' - LOCK HOLES AND PIN not to scale

DETAIL 'B' - POST FLANGES & GASKET - not to scale

NOTES:

1. ALL GATE MATERIAL MUST BE GALVANIZED AFTER FABRICATION.
2. ALL LOCATIONS WHERE GALVANIZED FINISH IS COMPROMISED (INCL. BUT NOT LIMITED TO ADDITIONAL DRILLING, WELDING OR SCRATCHES) TO CLEANED, PRIMED AND FINISHED WITH TWO COATS OF ZINC-RICH COLD GALVANIZING PAINT (E.G. GALVAPRIME) PER MANUFACTURER'S INSTRUCTIONS.
3. PIPE MUST BE NEW BUTT WELD PIPE, SCHEDULE 40 OR AS LABELLED.
4. 40MM O.D STEEL HANDRAIL ARE TO BE CONTINUOUS PIPE.
5. LOWER POST (SLEEVED) TO EXTEND A MIN. OF 100mm BEYOND LOCKING PIN LOCATION INTO UPPER POST.
6. PIPE/POST SURFACES (INSIDE/OUTSIDE) TO BE FREE OF WELDING SEAMS THAT PREVENT ROTATION AND MOVEMENT OF GATE.
7. LOCKING PIN IS WELDED TO GATE WITH A 300mm LONG GALV. CHAIN, ONE END WELDED TO GATE BELOW LOCKING PIN HOLES, OTHER END WELDED TO LOCKING PIN.
8. DIRECTIONAL SIGN TO BE MIN. 1.5 MM TK ALUMINIUM OR GALV. METAL RIVETTED TO GATE AT EACH CORNER ON EACH SIDE OF GATE.
9. ALL WELDING AND GALVANIZING DRIPS, SPLATTERS, BURRS AND OTHER INCONSISTENCIES IN THE FINISH TO BE REMOVED
10. WELDING OF LOCKING PIN CHAIN, INSTALLATION OF PVC GASKET, CHEVRON SIGNS AND REFLECTIVE TAPE ARE CONSIDERED INTEGRAL TO THE WORK AND ARE TO BE INSTALLED PRIOR TO ANY CONSIDERATION OF SUBSTANTIAL PERFORMANCE.
11. LOCKING PIN MUST BE TESTED AND MOVE FREELY THROUGH ASSOCIATED ASSEMBLED GATE TOP AND POST BOTTOM PRIOR TO LEAVING FABRICATOR.
12. LOCKING PIN MUST BE TESTED WITH STANDARD CITY OF MISSISSAUGA 2126 LOCK WITH LOCK MOVING FREELY THROUGH HOLE, PRIOR TO LEAVING FABRICATOR.
13. ASSOCIATED GATE TOP AND BASE TO BE MATCHED AND MARKED WITH BLACK GREASE PENCIL CLEARLY PRIOR TO DELIVERY.
14. ALL DIMENSIONS ARE IN MILLIMETRES UNLESS OTHERWISE NOTED. PIPE DIAMETER IN INCHES PER INDUSTRY PRACTICE.
15. REFER TO SPECIFICATION AND INSTALLER INSTRUCTIONS.

INSTALLER ONLY INSTRUCTIONS:

16. GATE POST TO BE INSTALLED PLUMB.
17. REMOVE AND DIPPOSE OF EXCAVATED AND CONCRETE SPOILS OFF SITE.
18. CONTRACTOR TO STAKE OUT GATE LOCATION FOR THE REVIEW OF THE PROJECT COMMUNITY SERVICES REPRESENTATIVE OR DESIGNATE PRIOR TO INSTALLATION.
19. REFER TO DETAILS 02870-3-1 MIDBLOCK CROSSING WITH SIDEWALK, AND 02870-3-2, MIDBLOCK CROSSING WITHOUT SIDEWALK, FOR OFFSET GATE PLACEMENT.

N.T.S.