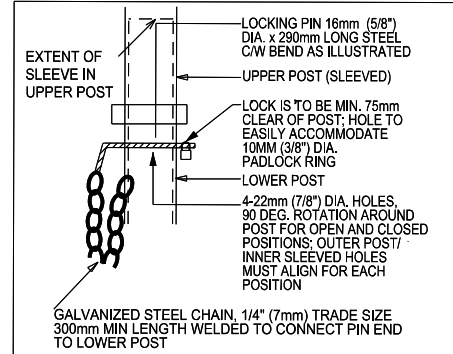
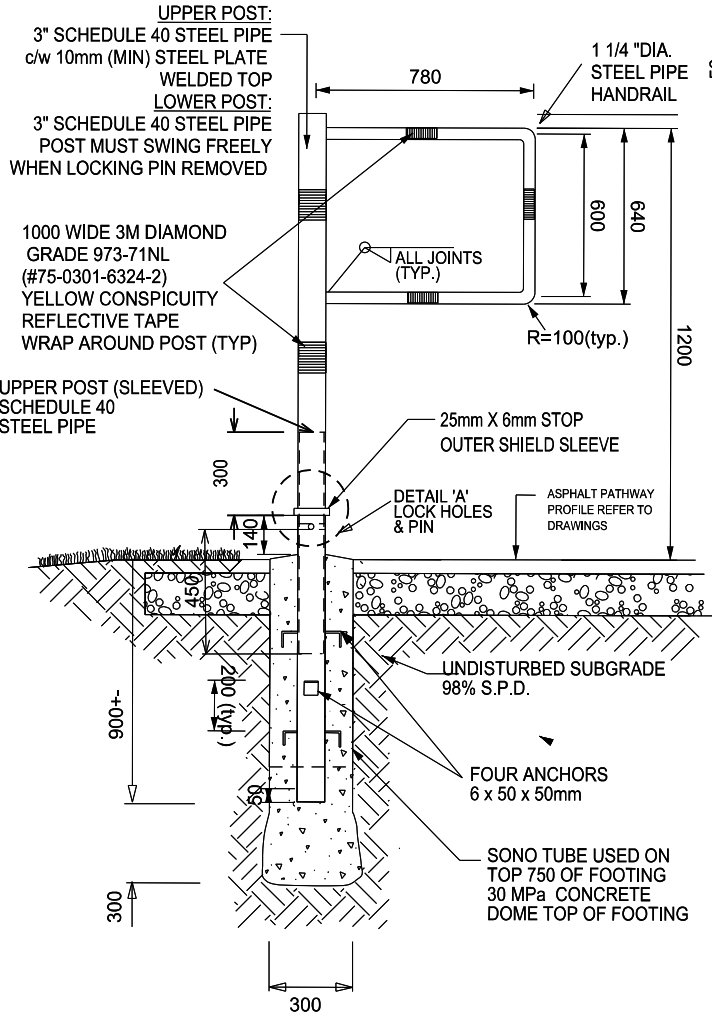


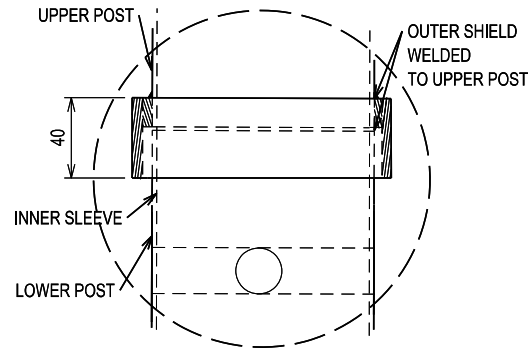
02870-3

Gates Removable P-Gate

NOTE:
TO BE USED AS A GUIDELINE ONLY.
NOT TO SCALE. REMOVE CITY TITLE BLOCK
AND REDRAW TO REPRESENT SITE SPECIFIC
CONDITIONS. ALL SITE SPECIFIC CONDITIONS
ARE TO BE CONFIRMED BY THE PROJECT
CONSULTANT.



DETAIL 'A' - LOCK HOLES AND PIN
not to scale



NOTES:

1. ALL GATE MATERIAL MUST BE HOT DIPPED GALVANIZED AFTER FABRICATION. LOCATION OF BLOW HOLES TO BE APPROVED BY CITY OF MISSISSAUGA REPRESENTATIVE PRIOR TO DIPPING.
2. ALL LOCATIONS WHERE GALVANIZED FINISH IS COMPROMISED (INCL. ADDITIONAL DRILLING, WELDING OR SCRATCHES) TO BE CLEANED, PRIMED AND FINISHED WITH TWO COATS OF ZINC-RICH COLD GALVANIZING PAINT (E.G. GALVAPRIME) PER MANUFACTURER'S INSTRUCTIONS.
3. PIPE MUST BE NEW BUTT WELD PIPE, SCHEDULE 40 OR AS LABELLED.
4. STEEL HANDRAIL IS TO BE CONTINUOUS PIPE.
5. PIPE/POST SURFACES (INSIDE/OUTSIDE) TO BE FREE OF WELDING SEAMS THAT PREVENT ROTATION AND MOVEMENT OF GATE.
6. LOCKING PIN IS WELDED TO GATE WITH A 300mm LONG GALV. CHAIN, ONE END WELDED TO GATE BELOW LOCKING PIN HOLES, OTHER END WELDED TO LOCKING PIN.
7. ALL WELDING AND GALVANIZING DRIPS, SPLATTERS, BURRS AND OTHER INCONSISTENCIES IN THE FINISH TO BE REMOVED
8. WELDING OF LOCKING PIN CHAIN, AND REFLECTIVE TAPE ARE CONSIDERED INTEGRAL TO THE WORK AND ARE TO BE INSTALLED PRIOR TO ANY CONSIDERATION OF SUBSTANTIAL PERFORMANCE.
9. LOCKING PIN TO BE TESTED FOR FREE MOVEMENT THROUGH ASSEMBLED GATE TOP AND POST BOTTOM PRIOR TO LEAVING FABRICATOR.
10. LOCKING PIN TO BE TESTED WITH CITY OF MISSISSAUGA LOCK FOR FREE MOVEMENT THROUGH HOLE, PRIOR TO LEAVING FABRICATOR.
11. ASSOCIATED GATE TOP AND BASE TO BE MATCHED AND MARKED WITH BLACK GREASE PENCIL CLEARLY PRIOR TO DELIVERY.
12. ALL DIMENSIONS ARE IN MILLIMETRES UNLESS OTHERWISE NOTED. PIPE DIAMETER IN INCHES PER INDUSTRY PRACTICE.
13. REFER TO SPECIFICATION AND INSTALLER INSTRUCTIONS.
14. GATE POST TO BE INSTALLED PLUMB.
15. REMOVE AND DIPPOSE OF EXCAVATED AND CONCRETE SPOILS OFF SITE.
16. CONTRACTOR TO STAKE OUT GATE LOCATION FOR THE REVIEW OF THE COMMUNITY SERVICES PROJECT MANAGER OR DESIGNATE PRIOR TO INSTALLATION.

N.T.S.