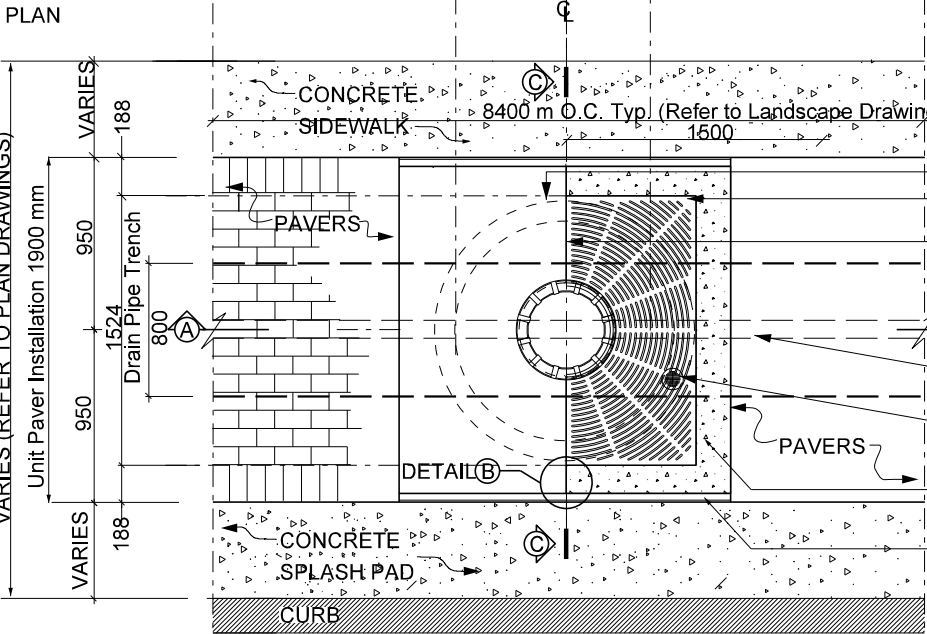
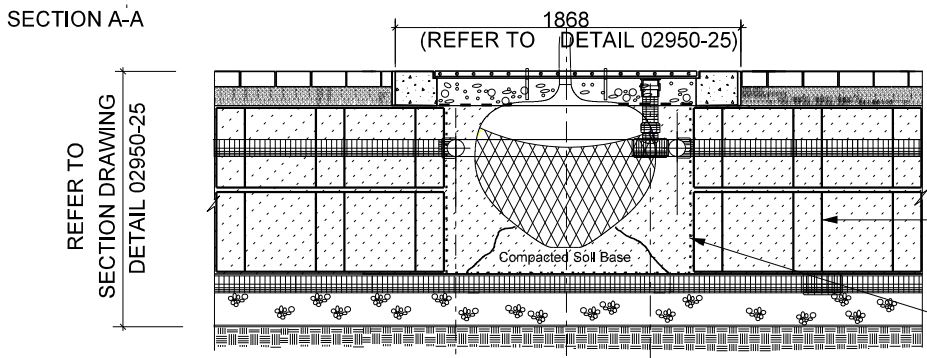
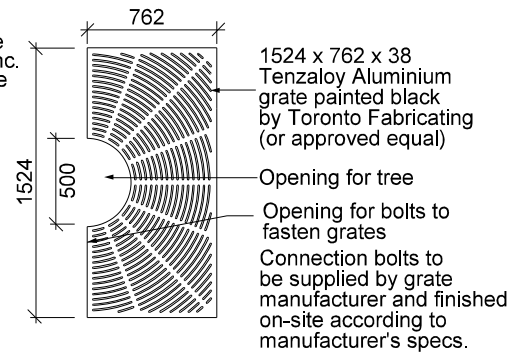
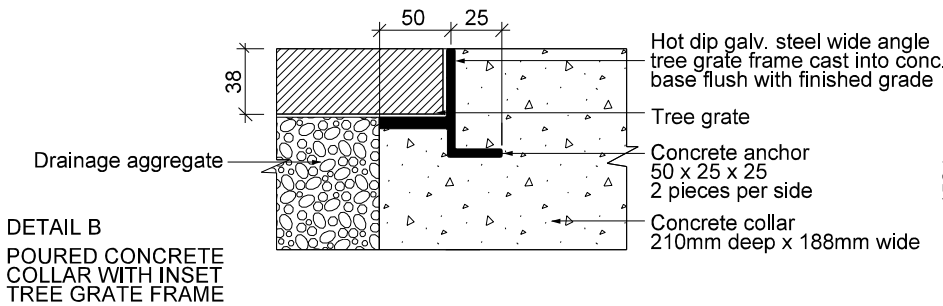


# 02950-24

## Planting Soil Cell Trench Tree Planting & Open Grate- Plan

**NOTE:**  
TO BE USED AS A GUIDELINE ONLY.  
NOT TO SCALE. REMOVE CITY TITLE BLOCK  
AND REDRAW TO REPRESENT SITE SPECIFIC  
CONDITIONS. ALL SITE SPECIFIC CONDITIONS  
ARE TO BE CONFIRMED BY THE PROJECT  
CONSULTANT.



- NOTES:**
1. All dimensions are in millimetres unless otherwise noted.
  2. This detail to be used in conjunction with Community Services specifications and Detail No. 02950-25 and 02861-13.
  3. Refer to approved Site Plan Landscape drawing for verification of tree spacing.
  4. Topsoil in soil cell trench shall be compacted by foot and hand tamped equivalent to 85% S.P.D.
  5. Allowances for the unit paver surface and tree grate installation are to be accommodated during the setting of the adjacent concrete forms.
  6. Paver pattern, size and dimensions are to be verified for individual street requirements/standards.
- N.T.S.**