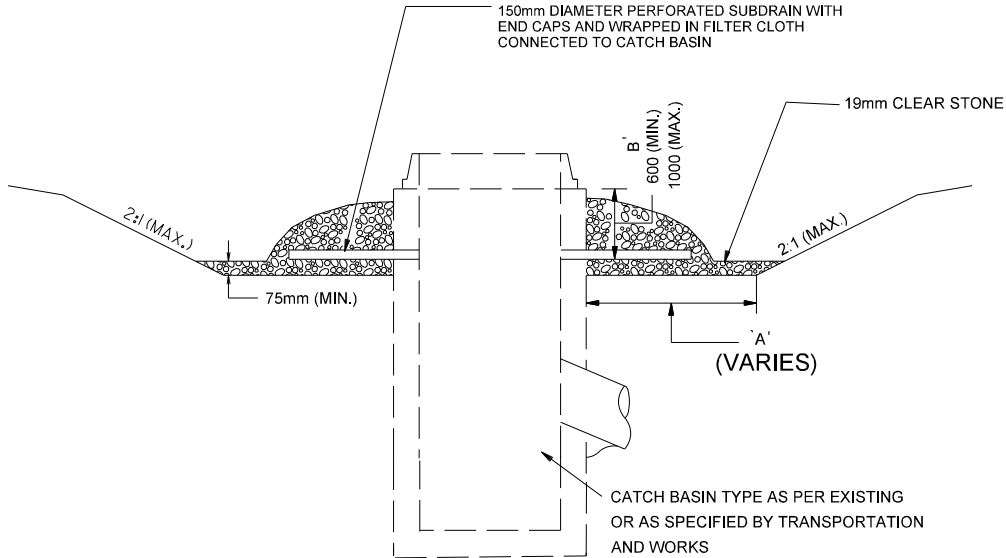


02861-10

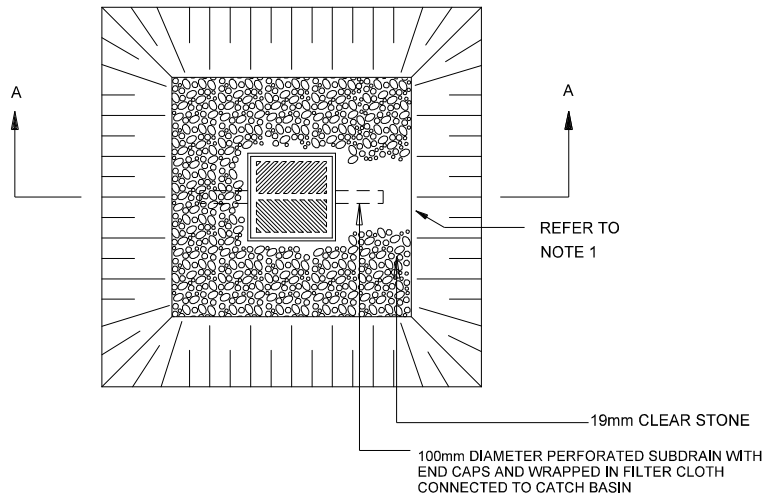
Drainage Catch Basin With Sediment Trap

NOTE:
TO BE USED AS A GUIDELINE ONLY.
NOT TO SCALE. REMOVE CITY TITLE BLOCK
AND REDRAW TO REPRESENT SITE SPECIFIC
CONDITIONS. ALL SITE SPECIFIC CONDITIONS
ARE TO BE CONFIRMED BY THE PROJECT
CONSULTANT.

SECTION A-A



PLAN



NOTES:

1. VOLUME OF SEDIMENT TRAP TO BE 125m PER HECTARE OF DRAINAGE. DEPTH TO BE CALCULATED FROM TOP OF CATCH BASIN TO BOTTOM OF TRAP (DIMENSION 'B')
2. MINIMUM DEPTH FROM TOP OF CATCH BASIN TO BOTTOM OF TRAP SHALL BE 600mm, MAXIMUM DEPTH SHALL BE 1000mm.
3. SEDIMENT TRAP TO BE CLEANED AS DEEMED NECESSARY BUT AS A MINIMUM WHEN THE DEPTH FROM UNDERSIDE OF FRAME TO TOP OF SILT IS REDUCED TO 300mm.
4. UPON REMOVAL OF TRAP, CATCH BASIN CONNECTION HOLES TO BE PARGED WITH CONCRETE.
5. ALL MEASUREMENTS IN mm UNLESS OTHERWISE STATED

N.T.S.