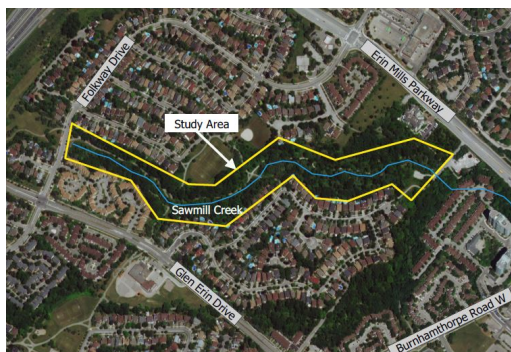


CITY OF MISSISSAUGA – NOTICE OF STUDY COMMENCEMENT

Municipal Class Environmental Assessment Study: Sawmill Creek Erosion Control Project (Folkway Drive to Erin Mills Parkway)

WHAT?

- The City of Mississauga is undertaking a Schedule B Class Environmental Assessment (Class EA) Study for erosion control and restoration of Sawmill Creek from Folkway Drive to Erin Mills Parkway.



WHY?

- Through its ongoing erosion monitoring program, the City of Mississauga recognizes that this section of Sawmill Creek is a high priority site in need of rehabilitation due to the presence of erosion and risk to infrastructure.

HOW?

- The study will examine the creek and associated natural resources to identify existing erosion problems, potential future risks, and opportunities for restoration and environmental enhancement.
- Through the Class EA process, multiple alternative solutions will be developed and evaluated by the Study Team and refined through public and agency consultation (see below). The Study Team will then select a Preferred Alternative and proceed with design of the recommended works.
- At the end of the study, a Project File documenting the study process will be available for public review.

GET INVOLVED!

- Consultation is an important part of the Class EA process. Public input and comment are invited for incorporation into the planning and design of this project.
- A Public Information Centre (PIC) will be held to present the study findings, the alternative solutions being considered, and to answer any questions you may have. Details regarding the PIC will be advertised publicly as the study progresses.
- If you have any questions or comments regarding the study, wish to provide input on the proposed solutions, or wish to be added or removed from the study mailing list, please contact:

Anthony Di Giandomenico, P.Eng.

Project Manager

City of Mississauga

201 City Centre Dr, Suite 800

Mississauga, ON L5B 2T4

(905) 615-3200, ext. 3491

anthony.digiandomenico@mississauga.ca

Wolfgang Wolter

Consultant Project Manager

Ecosystem Recovery Inc.

80 Courtland Avenue E, Unit 2

Kitchener, ON N2G 2T8

(519) 621-1500

wolfgang.wolter@ecosystemrecovery.ca

COVID-19 Community Engagement Update: While we continue to respond to this pandemic, we are working hard to deliver essential services and projects to keep our City moving and safe. While we can't connect in person at this time, we still want to connect! Opportunities to connect with the Study Team and share your input are noted above.

This notice signals the commencement of the Class EA, a study which will define the problem, identify/evaluate alternative solutions, and determine a preferred design in consultation with regulatory agencies and the public. The study is being undertaken in accordance with the planning and design process for Schedule 'B' projects, as outlined in the "Municipal Class Environmental Assessment" document (October 2000, amended in 2015), which is approved under the Ontario Environmental Assessment Act.

Personal information is collected under the authority of the Environmental Assessment Act and will be used in the assessment process. With exception of personal information, all comments shall become part of the public records. Questions about this collection should be directed to the Project Manager listed above.