

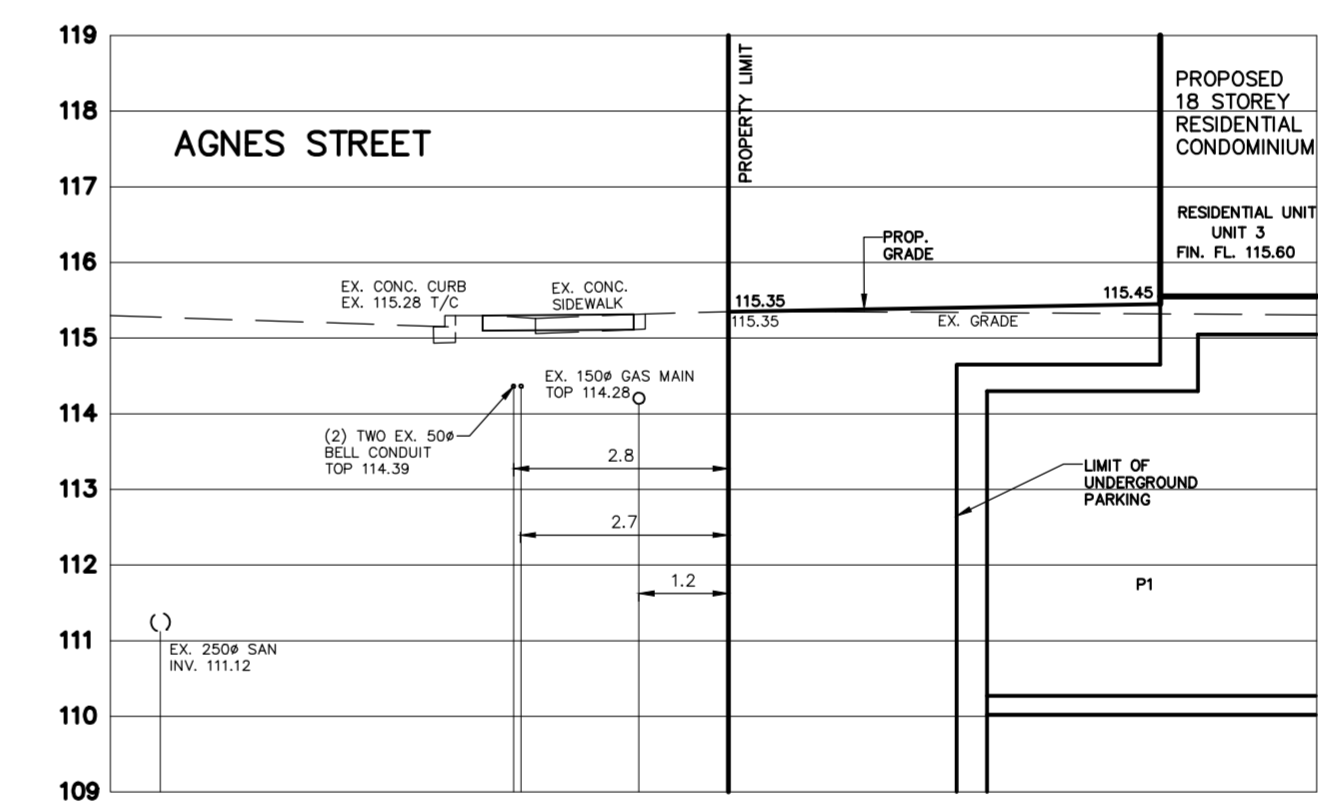
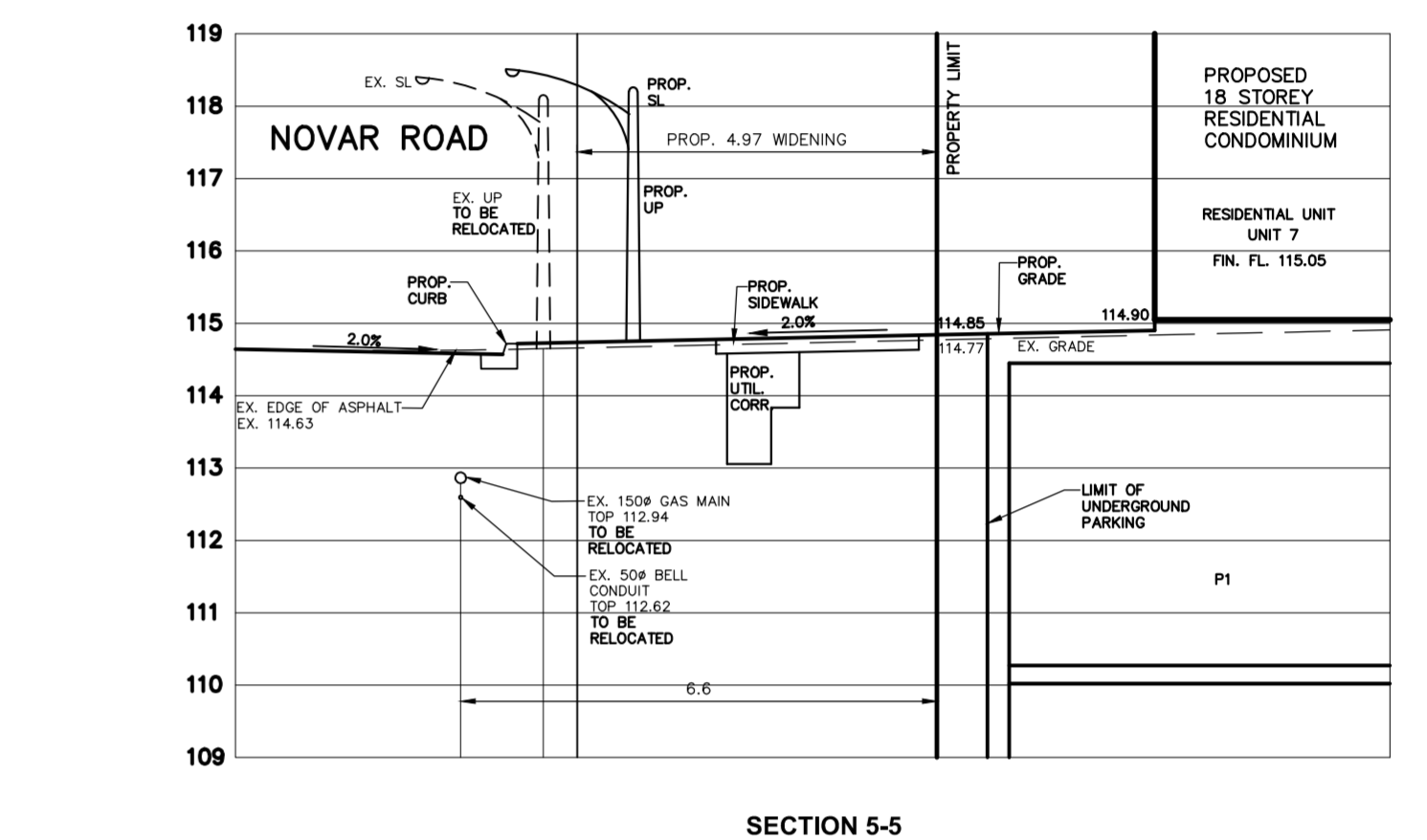
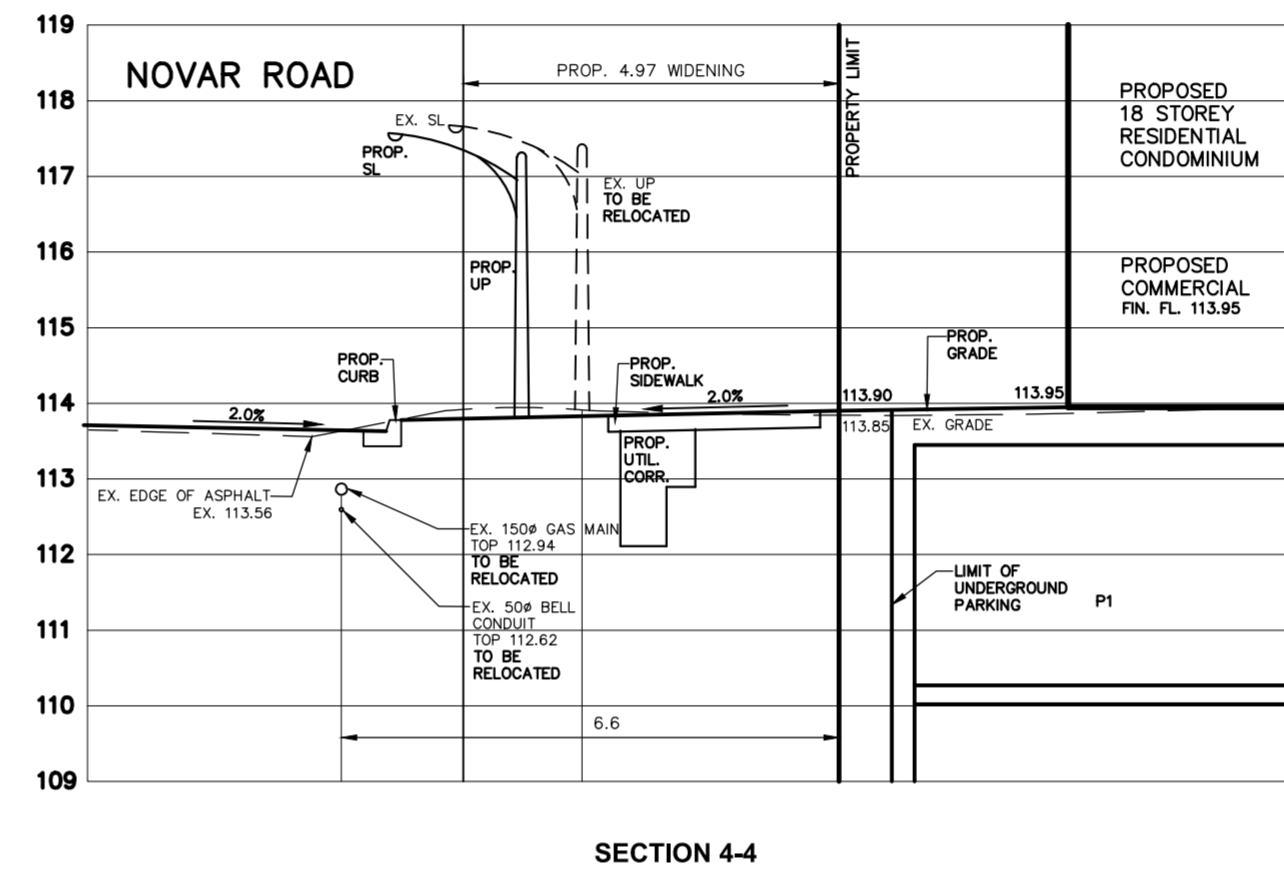
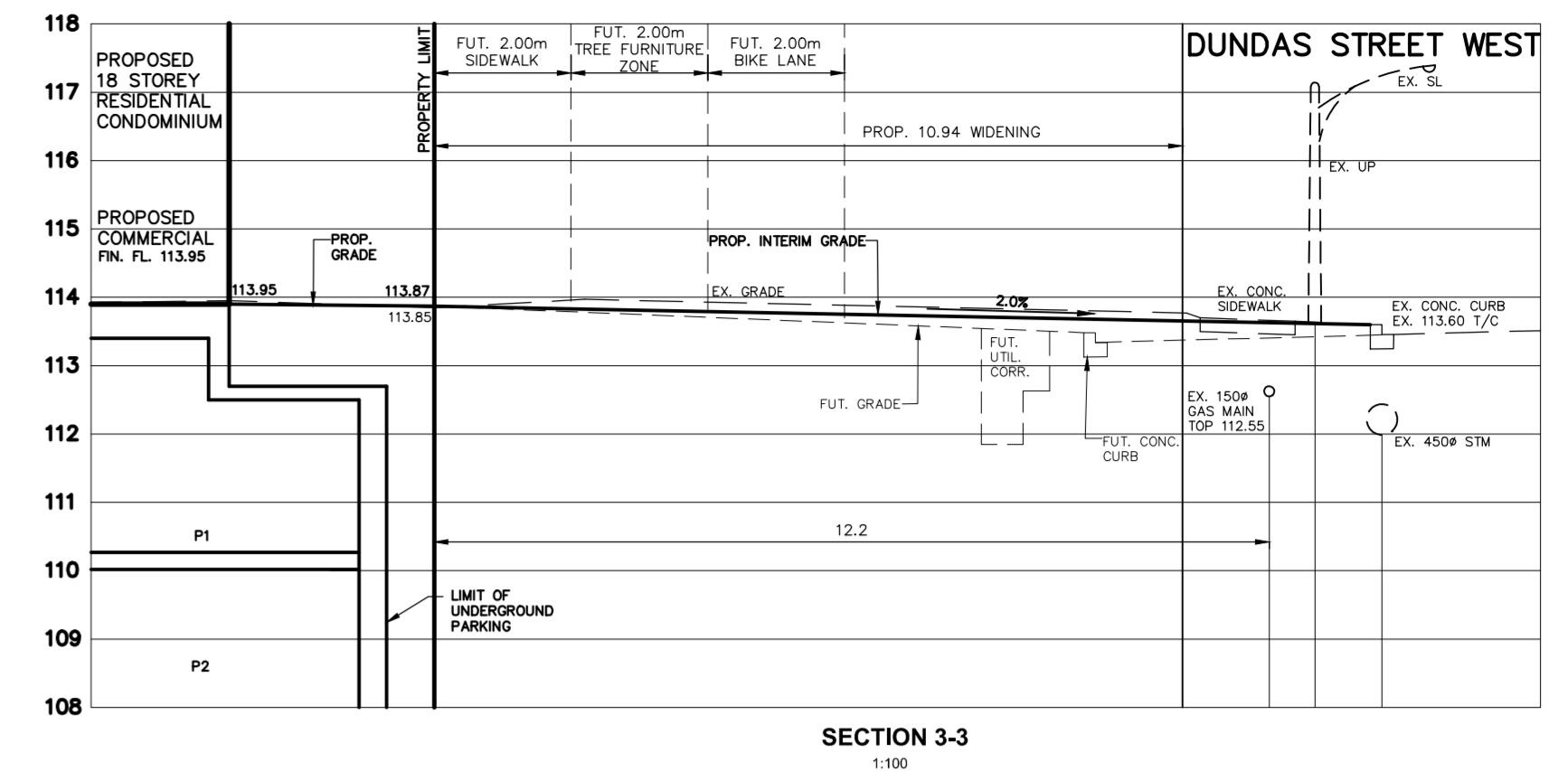
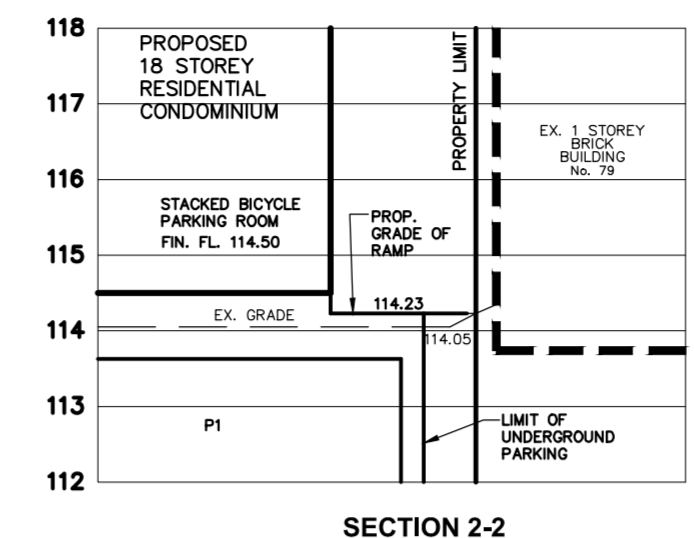
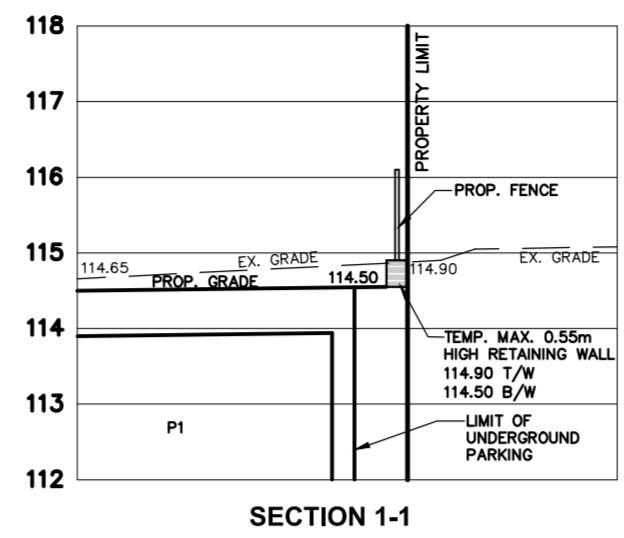
10.0m OF EXTRA DEPTH SIDEWALK TO BE INSTALLED, MINIMUM 150mm DEPTH AS PER OPSD, 316.016

TEMP. BASE CURB OR SEMI-MOUNTABLE CONC. CURB & GUTTER AS PER OPSD, 600.60 (8.0)

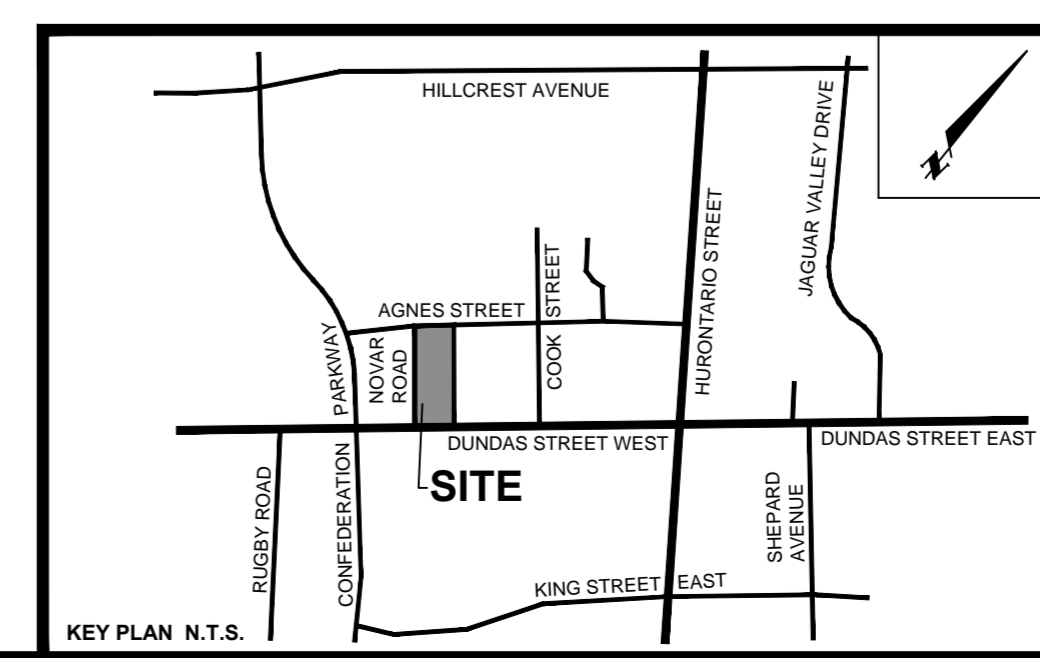
10.0m OF EXTRA DEPTH SIDEWALK TO BE INSTALLED, MINIMUM 150mm DEPTH AS PER OPSD, 316.016

**NOVAR ROAD** (BY BY-LAW No. 530)  
(FORMERLY OGDEN STREET BY REGISTERED PLAN TOR-12)  
PIN 13151-0252 (LT)

REGISTERED



- LEGEND**
- (-000.00) - EXISTING ELEVATION TO REMAIN
  - (+000.00) - EXISTING ELEVATION
  - - DIRECTION OF SURFACE FLOW
  - (+000.00) - PROPOSED ELEVATION
  - ▭ - PROPOSED CATCH-BASIN
  - ▭ - CATCH-BASIN WITH TEMPORARY SEDIMENT CONTROL
  - (X) - EX-TREE TO REMAIN
  - (X) - EX-TREE TO BE REMOVED
  - (X) - ROOF DOWNSPOUTS
  - (X) - HYDRO TRANSFORMER
  - (X) - STREET LIGHT
  - (X) - EXISTING EASEMENT
  - - OVERLAND FLOW ROUTE



C.M. BENCHMARK NO. 1001 ELEVATION: 123.22  
DESCRIPTION: TABLE SET HORIZONTALLY AT THE BASE OF A 75mm CONCRETE TRAFFIC POLE ON THE SOUTH SIDE OF HILLCREST AVE., WEST OF THE CENTRE-LINE OF THE EASTERLY GO STATION ENTRANCE.

**SKIRA & ASSOCIATES LTD.**  
CONSULTING ENGINEERS  
3464 Semenyk Court, Suite 100, Mississauga, Ontario L5C 4P8  
Tel. (905) 276-5100 Fax. (905) 270-1936 Email - info@skiraconsult.ca

**PROP. RESIDENTIAL AND COMMERCIAL MISSISSAUGA II**  
LOTS 14, 15, 31, 32 AND PART OF LOT 13, W.H.S. REG. PLAN TOR-12  
85-95 DUNDAS STREET WEST

**EMBLEM DEVELOPMENTS**

**MISSISSAUGA**

**CONCEPT SITE GRADING PLAN**

DATE: APRIL 2020	AREA: Z.22	DWG. No. <b>C102</b>
SCALE: 1:250	DRAWN BY: K.G.	PROJECT No. <b>219-M55-2</b>
CITY FILE:	REGION FILE:	