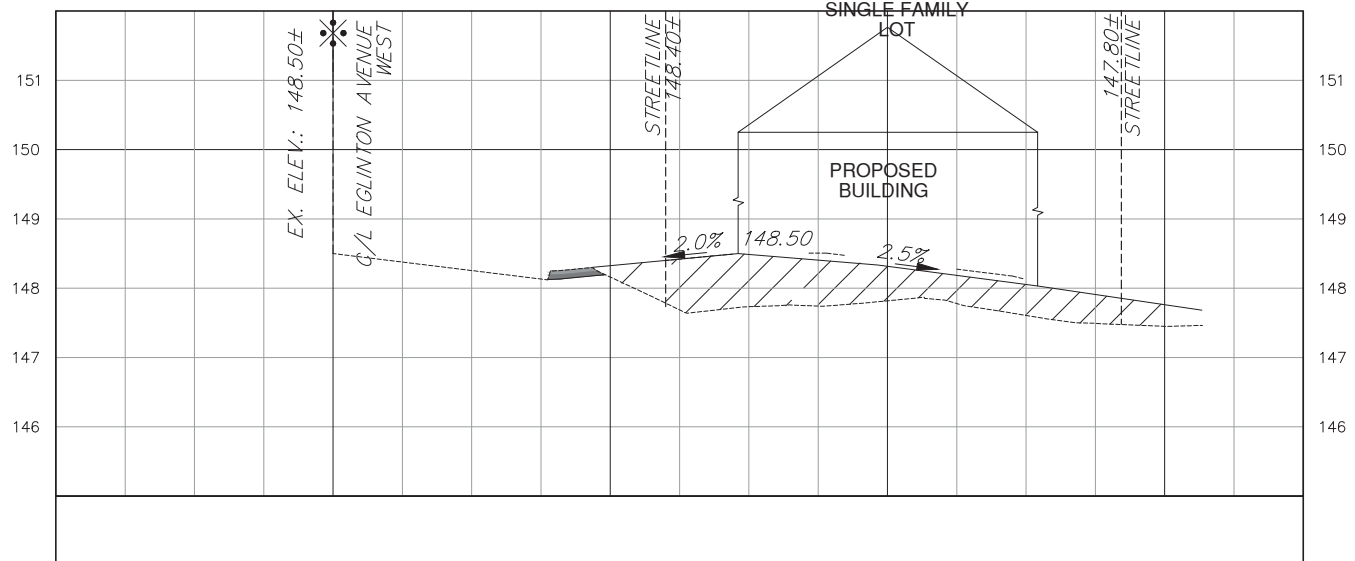
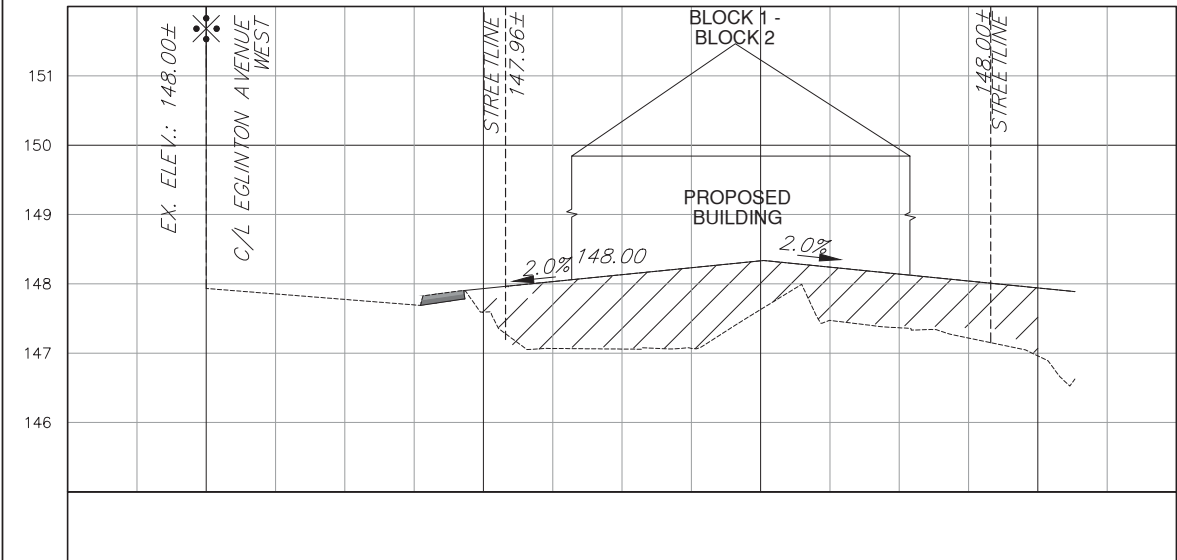


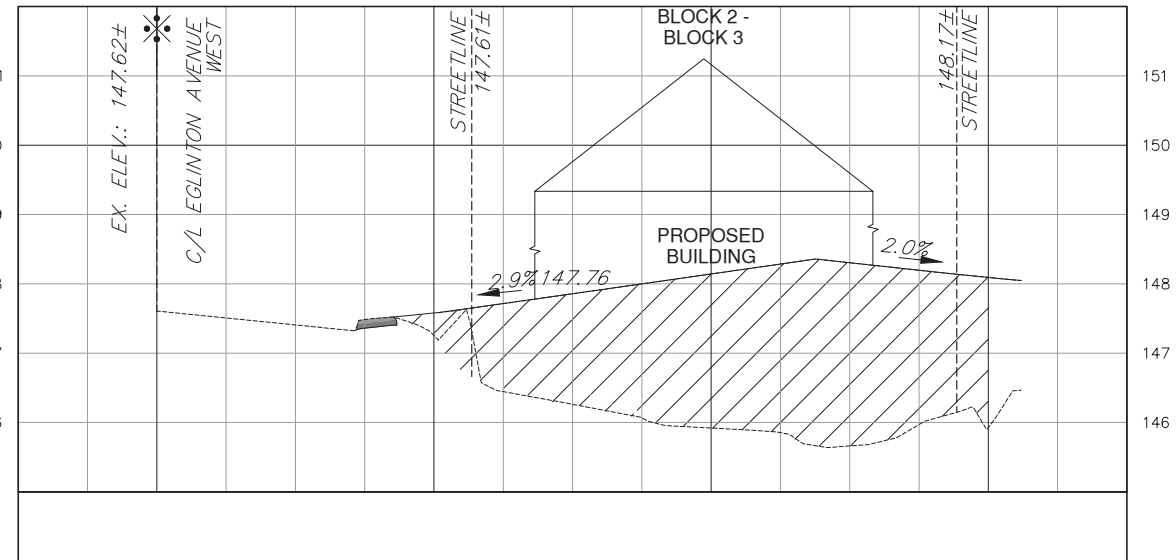
SECTION A-A



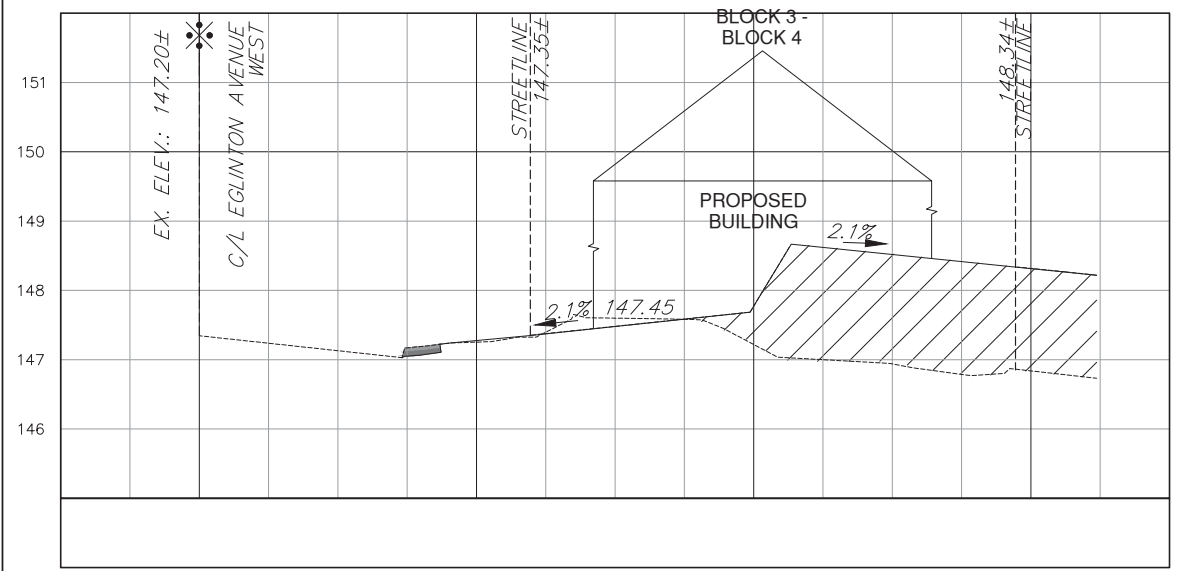
SECTION B-B



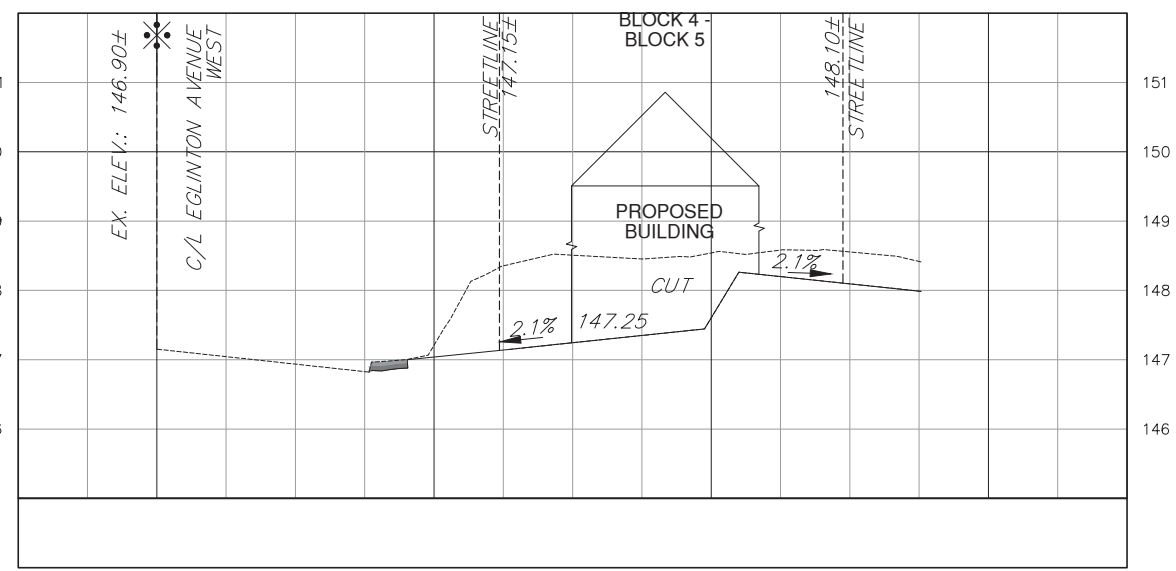
SECTION C-C



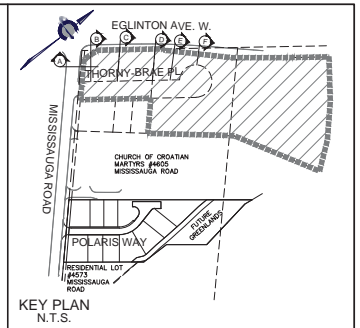
SECTION D-D



SECTION E-E



SECTION F-F



KEY PLAN
N.T.S.

LEGEND

THE DEVELOPER TO VERIFY INVERT ELEVATION AND LOCATION OF ALL UNDERGROUND SERVICES AND UTILITIES PRIOR TO COMMENCING WORK.

EXISTING SERVING INFORMATION FOR MISSISSAUGA ROAD AND THORNY BRAE PLACE WAS OBTAINED FROM MUNICIPAL RECORD DRAWINGS: C-33221, C-33222, C-98829, 1156-D, 7235-D. EXISTING SERVING AND UTILITIES INFORMATION SHOWN ON THIS DRAWING IS NOT TO BE RELIED ON. THE CONTRACTOR TO VERIFY INVERT ELEVATION AND LOCATION OF ALL UNDERGROUND SERVICES AND UTILITIES PRIOR TO COMMENCING WORK.

SITE PLAN INFORMATION
SCHAEFFER DZALDOV BENNETT LTD.
64 JARDIN DRIVE
CONCORD, ONTARIO L4K 3P3
PHONE: (416) 987-0101
FAX: (905) 761-0101

SURVEY INFORMATION
SCHAEFFER DZALDOV BENNETT LTD.
64 JARDIN DRIVE
CONCORD, ONTARIO L4K 3P3
PHONE: (416) 987-0101
FAX: (905) 761-0101

BENCHMARK
ELEVATIONS SHOWN HEREON ARE REFERRED TO CITY OF MISSISSAUGA BENCHMARK No. 970, HAVING A PUBLISHED ELEVATION OF 148.702 METRES.

NO.	REVISION	DATE	BY
3.	3RD SUBMISSION	MAR 7, 2019	S.G.
2.	2ND SUBMISSION	JUNE 6, 2018	S.G.
1.	PRE-SUBMISSION REVIEW	NOV 22, 2017	S.G.

FIRST	SECOND	INTERIM	FINAL



THE HAZEL
MISSISSAUGA, ON
PROPOSED SECTIONS



DESIGNED BY: P.F.	DATE: NOVEMBER 2017	CHECKED BY: S.G.
DRAWN BY: A.A.	PROJECT No.	APPROVED BY: S.G.
SCALE: 1:500		DRAWING No.
UD15-0682		SEC-1

S:\2015 Projects\UD15-0682_2482570\Inventories\MSS\UD15-0682_M02-Design\Modes\UD15-0682_Bore_Grading.dwg (Section)
Mar 07, 2019 10:58am B.F. Phipps