

**BLOCK 46 AND PART OF BLOCK 57  
(0.30 RESERVE)  
REGISTERED PLAN 43M-1988**

**METRIC**  
THIS DRAWING IS COPYRIGHTED AND MUST NOT BE USED, REPRODUCED, OR REVISED WITHOUT WRITTEN PERMISSION. ALL DIMENSIONS ARE IN MILLIMETERS UNLESS OTHERWISE NOTED. VERIFY DIMENSIONS. DO NOT SCALE THIS DRAWING. REPORT ANY DISCREPANCIES AND OMISSIONS TO THE CONSULTANT FOR CLARIFICATION BEFORE COMMENCING WITH THE WORK. DEVIATIONS FROM THE CONTRACT DOCUMENTS WITHOUT WRITTEN APPROVAL FROM THE CONSULTANT ARE SUBJECT TO CORRECTION AT THE CONTRACTOR'S EXPENSE.

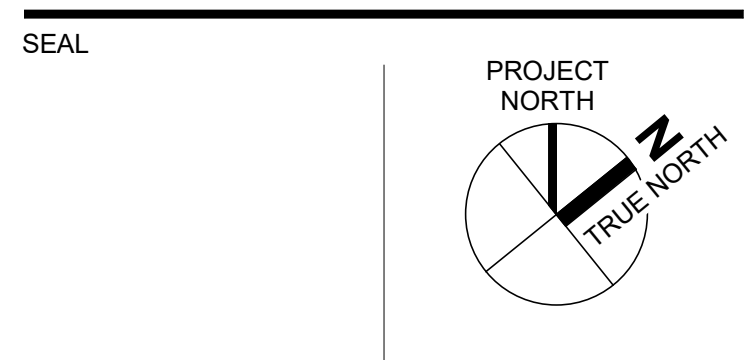
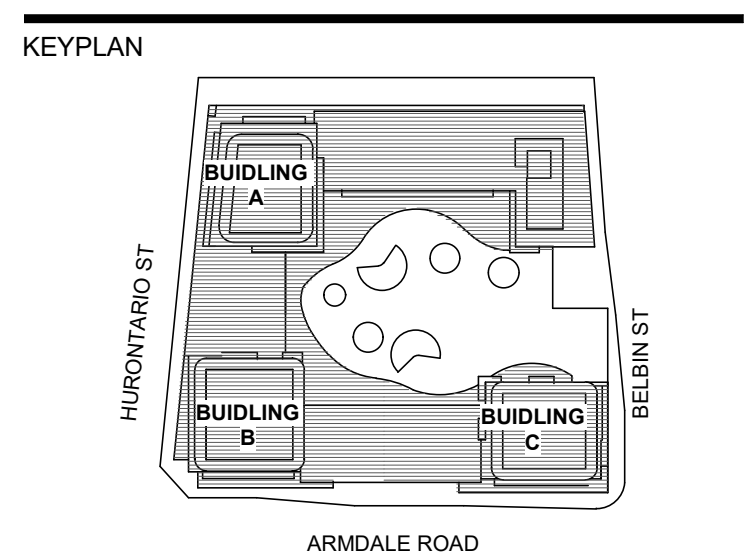
**DEVELOPER OWNER**  
581 HURONTARIO LIMITED PARTNERSHIP  
1 STEELCASE ROAD WEST, UNIT 8,  
MARKHAM, ON L3R0T3

**ARCHITECT & PRIME CONSULTANT**  
Dialog  
550.35 JOHN STREET  
TORONTO, ON, T2C0X5  
Tel: (416) 245-5501 Website: dialogdesign.ca

**LANDSCAPE ARCHITECT**  
TERRAPLAN LANDSCAPE ARCHITECT  
20 CHAMPLAIN BLVD, SUITE 102  
M9R2T1  
Tel: (416) 638-4911 Website: TERRAPLAN.CA

**CIVIL ENGINEER**  
C.F. CROZIER & ASSOCIATES  
2800 HIGHPOINT DRIVE, SUITE 100  
L5T2N4  
Tel: (905) 875-0026 Website: CFCROZIER.CA

**STRUCTURAL ENGINEER**  
Johnson, Aird and Partners  
1129 Leslie Street, Toronto  
M2C 2K5  
Tel: (416) 447-7405 Website: ASTINT.ON.CA

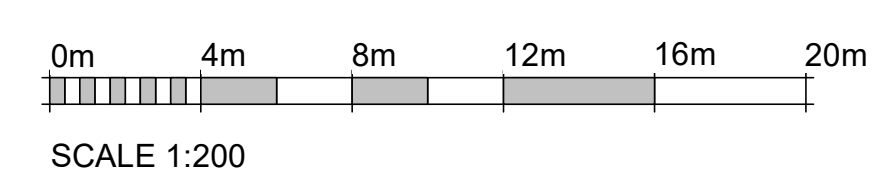
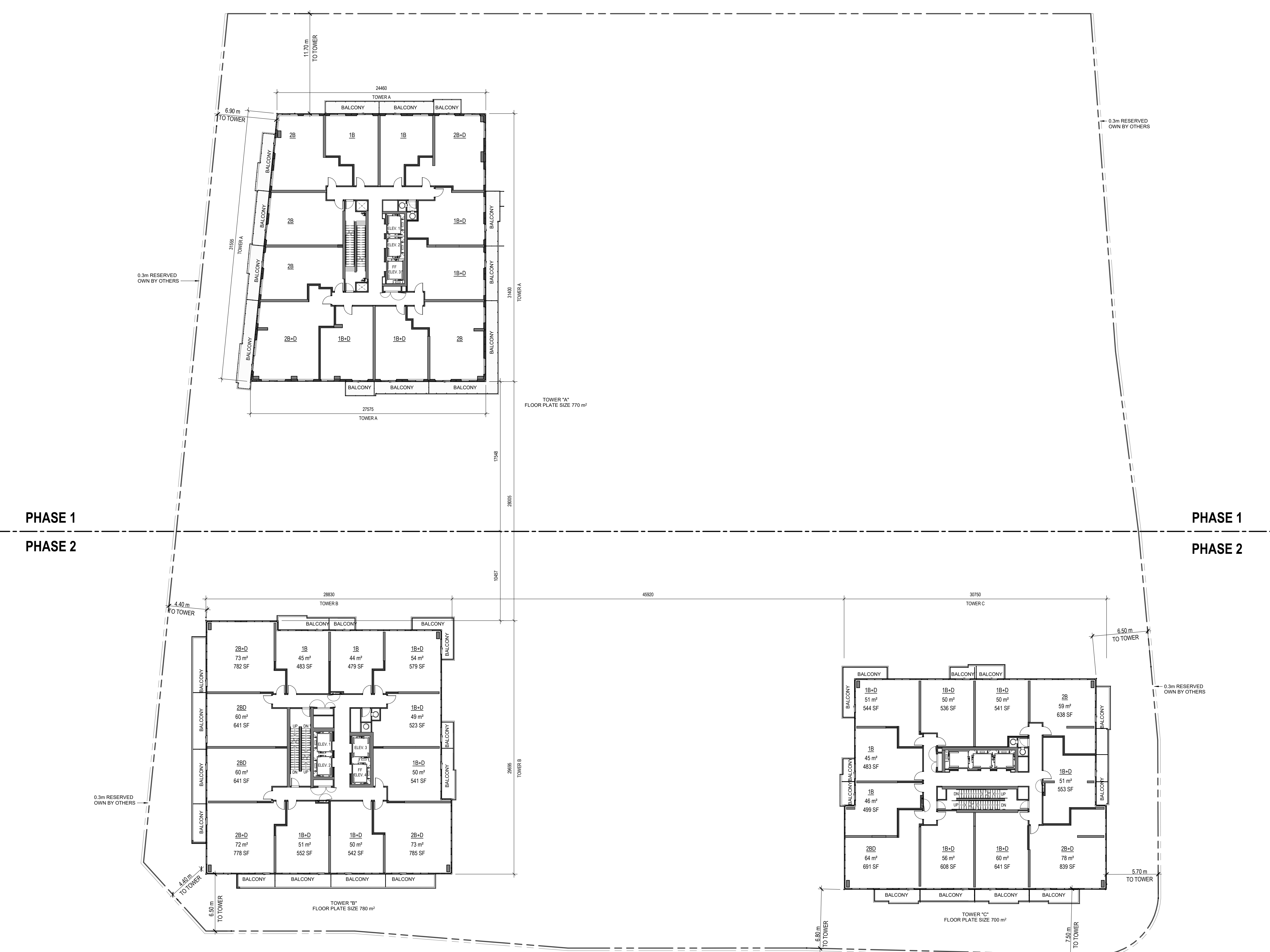


**581 HURONTARIO STREET - PHASE II - PROPOSED MIXED-USE DEVELOPMENT**

**TYPICAL FLOOR PLAN**

DRAWN: CHECKED:  
PLOT DATE: 11/6/2020 3:06:40 PM

**A310**



TYPICAL FLOOR PLAN  
SCALE: 1:200