

Welcome

to the Introductory Public Information Centre

Clarkson Road & Lakeshore Road

Intersection Improvements Municipal Class Environmental Assessment

December 3rd – 31st,
2020



Study Purpose



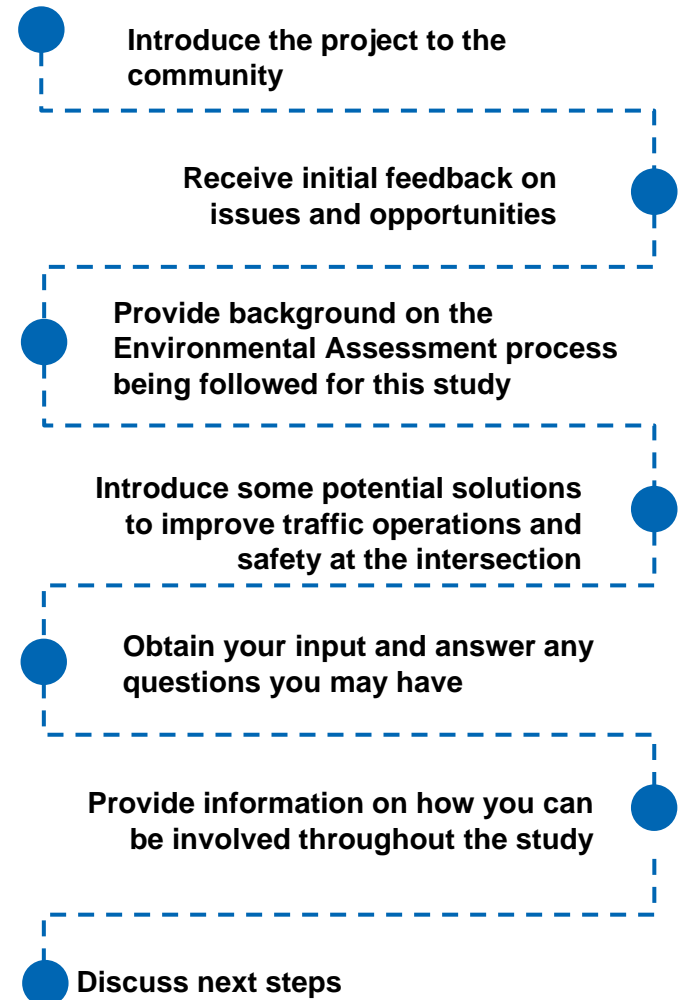
The City has started an Environmental Assessment (EA) study to investigate opportunities to improve the Lakeshore Road West and Clarkson Road North / Clarkson Road South intersections.

We want to hear from you



Please provide input on your experience, problems you are facing, and opportunities you envision surrounding the Lakeshore Road West and Clarkson Road North/South intersections. We welcome all feedback.

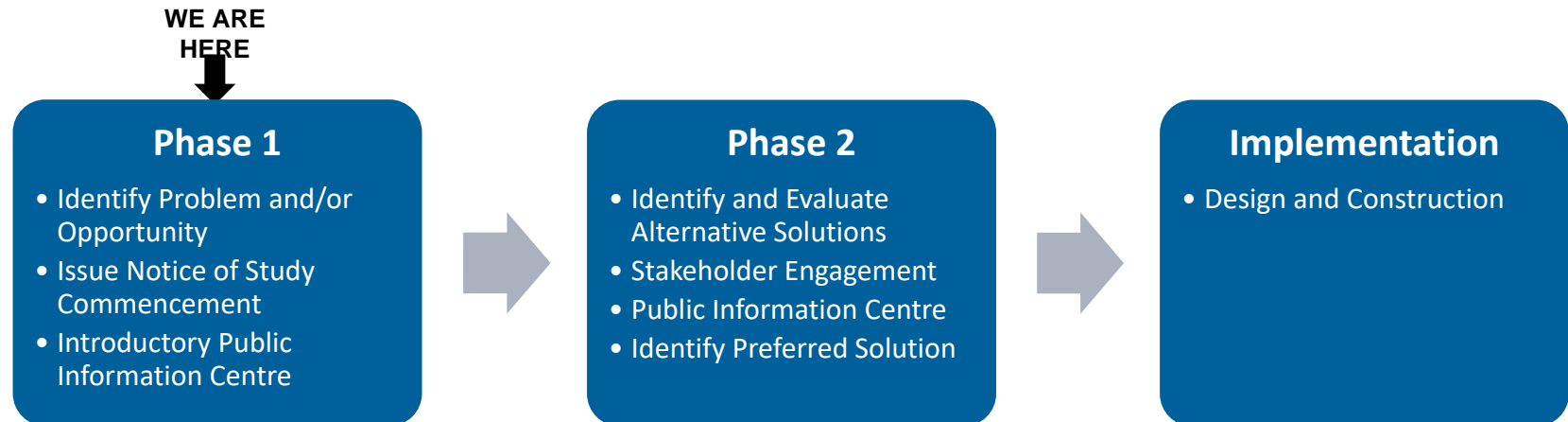
Why are we here?



What is an Environmental Assessment?

An **Environmental Assessment (EA)** is a planning and approval process for municipal infrastructure projects, following Ontario's Environmental Assessment Act.

This Study follows the Class EA process for Schedule 'B' projects. Key components of the study include:



EA Study Timelines

WE ARE HERE

**Introductory
Public Information
Centre**
December 2020

**Public Information
Centre #1**
January 2021

**Staff Report to
Council**
Summer 2021

**Finalize Project
File**
Summer 2021

**Anticipated
Construction Start**
TBD

Environmental Assessment – Public Consultation

Public consultation takes place through Public Information Centres (PICs) where comments and concerns are identified and discussed. These meetings are advertised in local newspapers and online at [mississauga.ca](https://www.mississauga.ca). One more Public Information Centre (PIC #1) will be held for this study during Phase 2 (tentatively planned for January 2021).

How to Get Involved



Visit our Website



Individual meetings



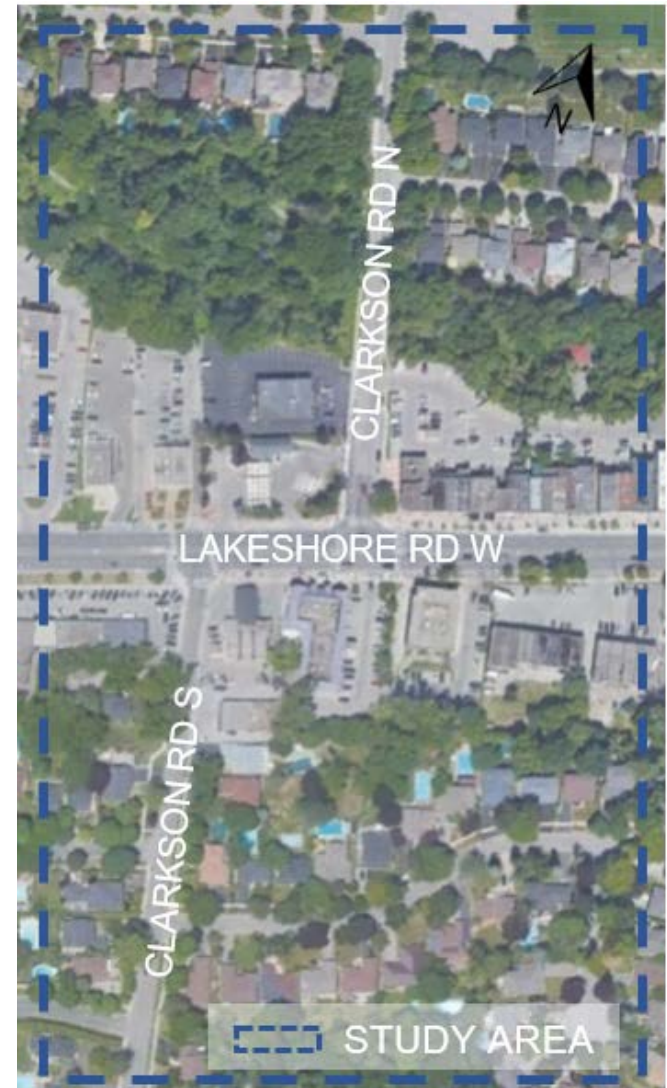
Join the Study Mailing List



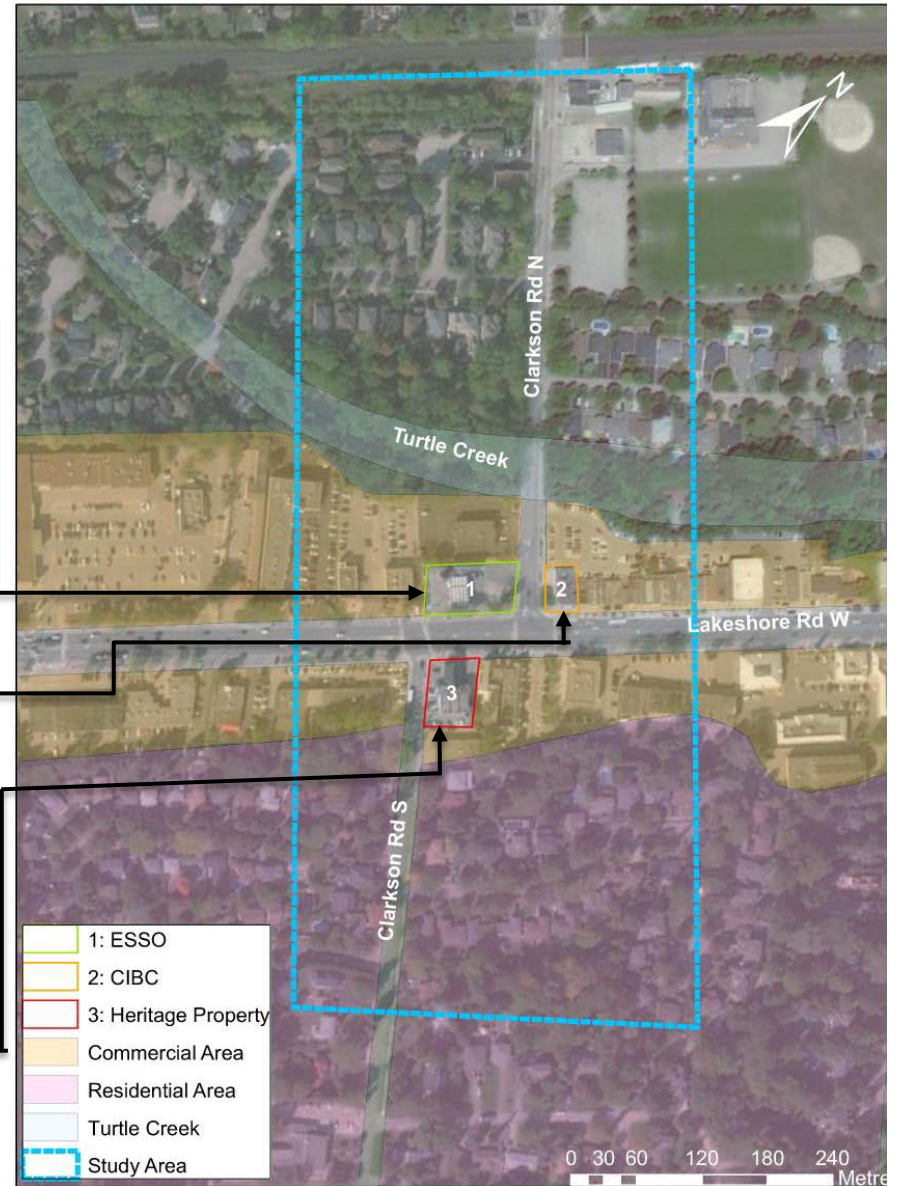
Join Virtual PIC

EA Study Area

- ✓ Clarkson Road North and South are offset by approximately **75 metres**
- ✓ Both intersections are **signalized**
- ✓ Lakeshore Road W has **4 travel lanes** (two per direction) **with left turn lanes** at the intersections
- ✓ Interspersed **commercial driveways** along Lakeshore Road W
- ✓ Lakeshore Road has a **35m** Official Plan Right-of-Way width
- ✓ Clarkson Road has a **22m** Official Plan Right-of-Way width



Constraints



Problem and Opportunity Statement

- The intersections of Lakeshore Road West and Clarkson Road North / Clarkson Road South are offset by approximately 75m, resulting in two closely spaced signalized intersections
- Concerns have been raised by local residents regarding the operation of the two closely spaced intersections and interspersed commercial entrances
- There is an opportunity to review the Lakeshore Road West and Clarkson Road North / Clarkson Road South intersections and improve the operations, safety and mobility for all road users at the intersection

Potential Solutions

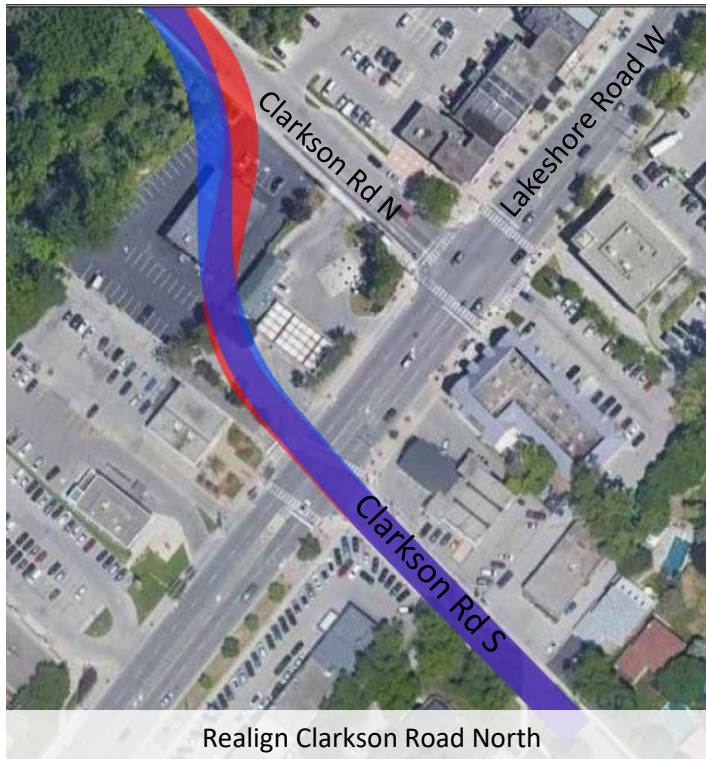
Realigning Clarkson Road South is not favoured as it would impact the following:

- ✓ One heritage building
- ✓ Several private residences
- ✓ Several commercial properties

Given that there are fewer constraints on the north side of Lakeshore Road West, options for the realignment of Clarkson Road North are considered more ideal.

Potential Solutions

The following are some of the potential solutions currently being considered. These are conceptual and suggestions are welcome for additional alternatives that you believe have merit.



Main Concerns

Please indicate your main area of concern on the crowd map by December 31, 2020 (link below):

<https://cima.planlocal.ca/clarkson/>

Next Steps



The City will compile the feedback received from this Introductory PIC to assist in identifying and evaluating alternative solutions for the project.

Any project related questions can be directed to:

Rory, O'Sullivan, P.Eng.

Transportation Project Engineer



City of Mississauga Transportation & Works Department
201 City Centre Drive, Mississauga



Rory.OSullivan@mississauga.ca

