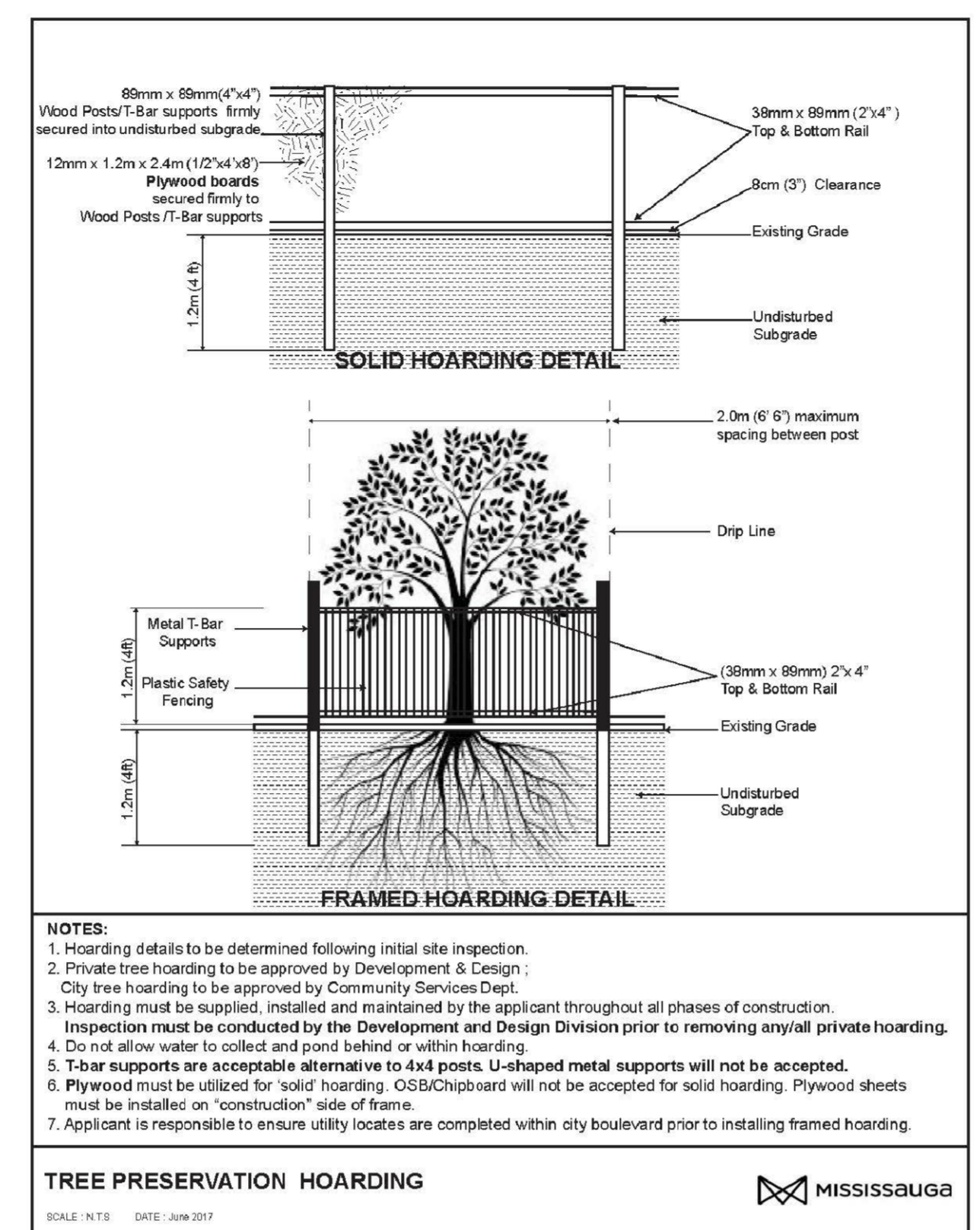
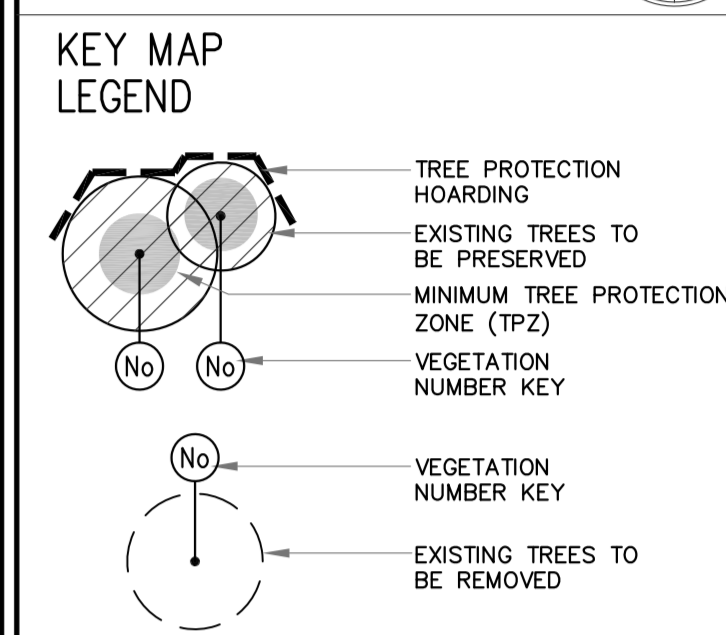
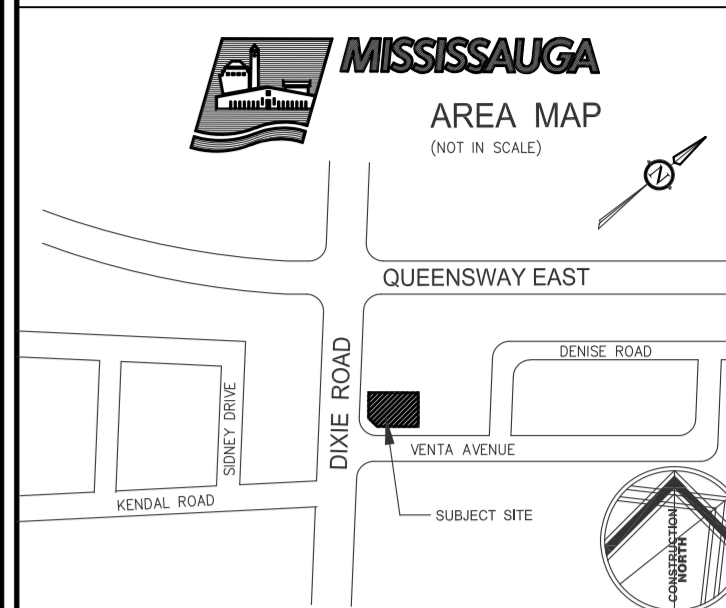


- GENERAL NOTES**
- VERIFY ALL DIMENSIONS.
 - DO NOT SCALE DRAWINGS.
 - REPORT ANY DISCREPANCIES, DISCOVERED ERRORS, OR OMISSIONS TO THE LANDSCAPE ARCHITECT BEFORE PROCEEDING.
 - IT IS ADVISED THAT CONTRACTORS CONTACT THE LANDSCAPE ARCHITECT PRIOR TO CONSTRUCTION TO ENSURE THE USE OF THE LATEST REVISED DRAWINGS.
 - DRAWINGS AND SPECIFICATIONS ARE THE PROPERTY OF THE LANDSCAPE ARCHITECT.



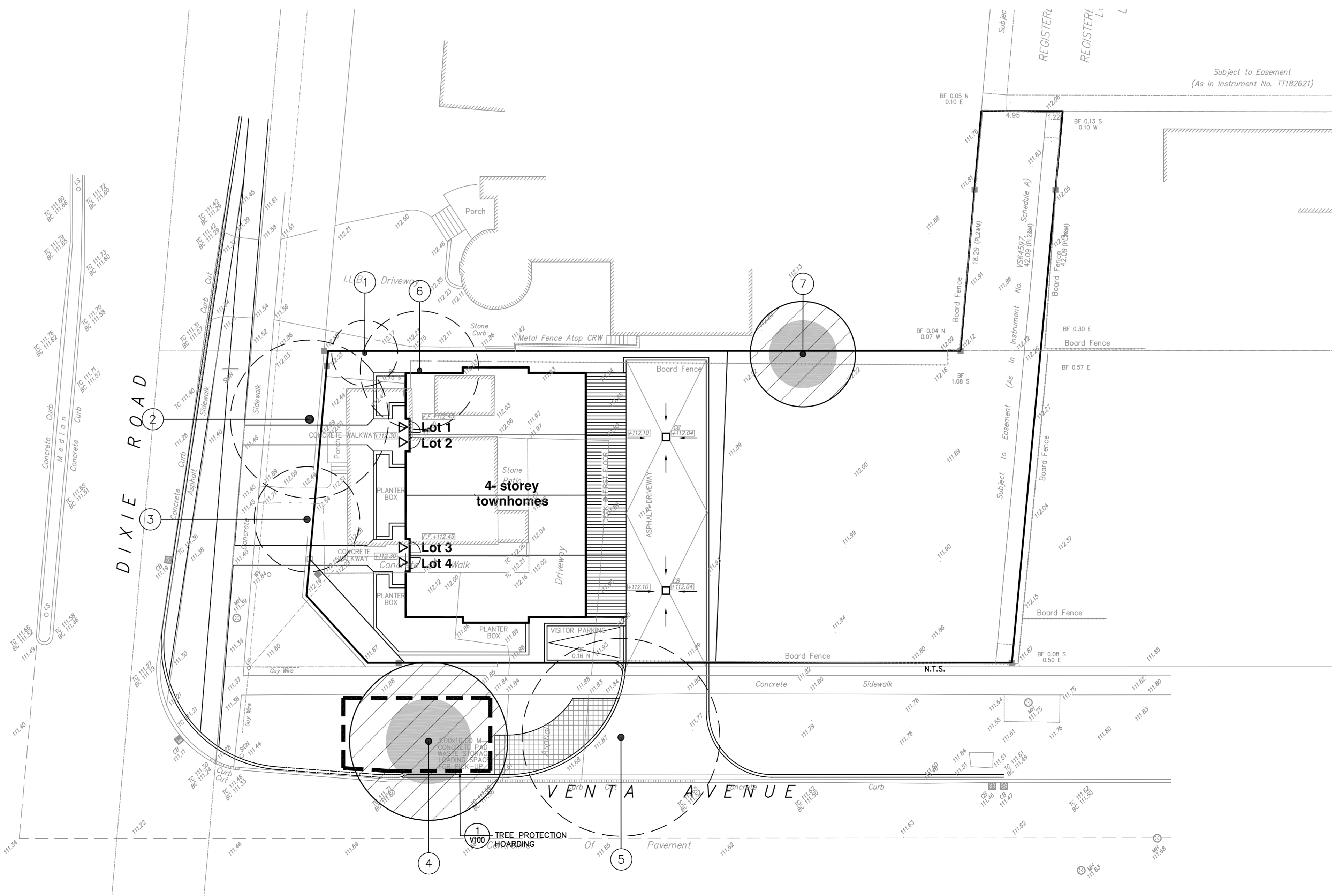
EXISTING TREE INVENTORY

| KEY | SPECIES | CALIPER | | CROWN | HEALTH | STRUCTURE | COMMENTS | PRESERVATION DIRECTION | MIN. TPZ | KEY |
|-----|---------------------------|---------|---------|-----------|----------------|---------------------------------------------------------------------------------|----------|------------------------|----------|-----|
| | | IN (cm) | IN (in) | | | | | | | |
| 1 | NORWAY SPRUCE | 32 | 5.0 | POOR-FAIR | GOOD FORM | ELEVATED CROWN, DEADWOOD AND DECLINE IN LEADER AND LOWER CROWN | REMOVE | 2.4 | 1 | |
| 2 | DEBORAH NORWAY MAPLE | 63 | 12.0 | GOOD | GOOD FORM | OLD PRUNING WOUNDS ON STEM, UNBALANCED CROWN DUE TO OVERHEAD WIRES | REMOVE | 4.2 | 2 | |
| 3 | CRIMSON KING NORWAY MAPLE | 49 | 8.0 | POOR | IRREGULAR FORM | DECLINING CROWN, EPICORMIC GROWTH THROUGHOUT | REMOVE | 3 | 3 | |
| 4 | NORWAY MAPLE | 46 | 12.0 | GOOD | GOOD FORM | MINOR INTERNAL EPICORMIC GROWTH, SOME INTERNAL TWIG TIP DIEBACK | PRESERVE | 3 | 4 | |
| 5 | NORWAY MAPLE | 48 | 15.0 | POOR-FAIR | BROAD FORM | GRIDLED ROOTS, WEST SIDE OF CROWN IN DECLINE, EPICORMIC GROWTH THROUGHOUT CROWN | REMOVE | 3 | 5 | |
| 6 | WHITE MULBERRY | 34 | 9.0 | GOOD | DOUBLE STEM | ONE SIDED FORM, CROWDED BY ADJACENT TREE, INCLUDED BARK | REMOVE | 2.4 | 6 | |
| 7 | NORWAY SPRUCE | 40 | 8.0 | GOOD | GOOD FORM | CROWN ELEVATED | PRESERVE | 2.4 | 7 | |

1 TREE PROTECTION HOARDING

2 EXISTING TREE INVENTORY

N.T.S.



Matthew C. Gefres
MATTHEW C. GEFRÉS
 International Society of Arboriculture
 Certified Arborist #ON-1144
 Date: OCT 01, 2019

| No. | DATE | REVISION | M.G. | BY |
|-----|--------------|---------------------------|------|----|
| 1 | MAY 26, 2020 | ADDITION OF ZONING NUMBER | | |

It is the responsibility of the Contractor and/or Owner to ensure that the drawings with the latest revisions are used for construction.

SBK
 5770 HURONTARIO STREET, SUITE 320
 MISSISSAUGA, ONTARIO, L5R 3C5
 T: 416.695.4349 F: 905.712.3101
 WWW.STRYBOS.COM

STRYBOS BARRON KING
 LANDSCAPE ARCHITECTURE

PROJECT:

4-UNIT TOWNHOMES
 2207 DIXIE ROAD
 Mississauga, Ontario
 OZ 20 02 W1

DRAWING TITLE:

EXISTING TREE INVENTORY AND PRESERVATION PLAN

| | |
|-------------------|------------------------|
| SCALE: 1 : 200 | PROJECT No. 19-5381 |
| DATE: OCT 2019 | DRAWING No. L100 |
| DRAWN BY: SS | |
| CHECKED BY: MG | |