

CITY OF MISSISSAUGA

NOTICE OF COMMENCEMENT AND OPPORTUNITY TO PARTICIPATE MUNICIPAL CLASS ENVIRONMENTAL ASSESSMENT STUDY

Pedestrian Bridges and Trails in the Credit Meadows Park Expansion (Former Harris Lands)

WHAT:

The City of Mississauga is developing pedestrian bridges as part of a new trail system in the northern portion of Credit Meadows (the former Harris Lands).

WHY:

Bridges over the Credit River and/or Fletcher's Creek may be developed to provide a trail connection between the former Harris Lands (Study Area) and the southern portion of Credit Meadows as well as the residential neighbourhoods to the east and west. Pedestrian bridges require study under the Municipal Class Environmental Assessment (MCEA) process.

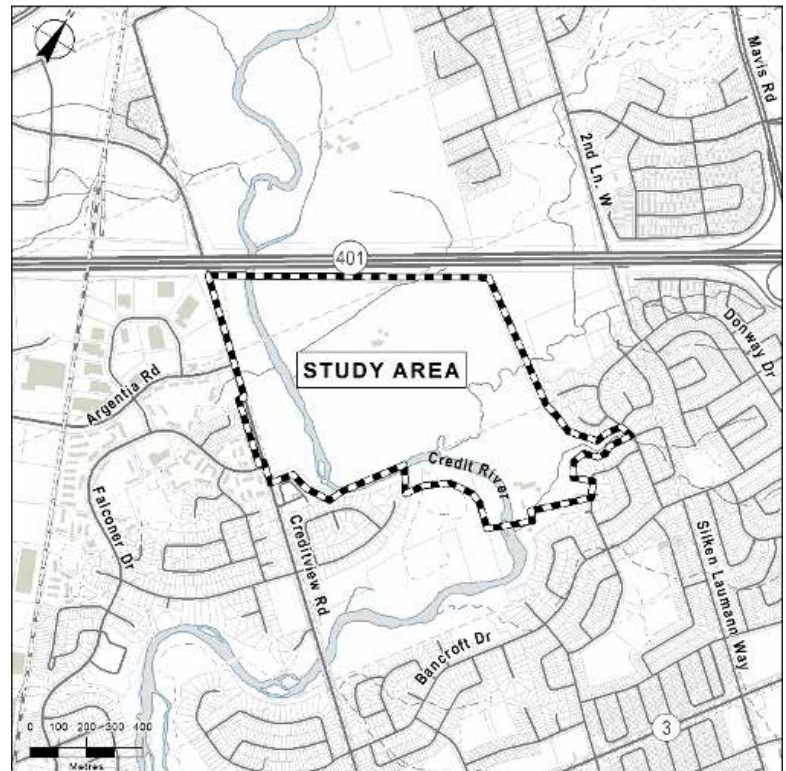
HOW:

The MCEA will meet the study requirements for "Schedule B" projects. A series of technical studies (including ecological, cultural, archaeological and geotechnical investigations) will be completed to inform the evaluation of alternative bridge locations, trail connections and associated trail routing. Agencies, stakeholders, Indigenous people and the public will be consulted throughout the study.

At the conclusion of the study, a preferred alternative will be selected and a Project File Report (PFR) will be prepared for public review.

GET INVOLVED:

Consultation with agencies, stakeholders, Indigenous people, and the public is important to the City and a key component of the study process.



- Visit yoursay.mississauga.ca/creditmeadows for information about the project.
- Complete the online survey regarding the pedestrian bridge and trail in the Credit Meadows park expansion.
- Deadline to complete the survey is **Monday, August 31, 2020**.

If you are unable to visit the website or require additional assistance with the materials, please contact either of the following Project Team members:

Erin Senior
Planner, Park Planning
City of Mississauga
201 City Centre Dr., 9th Floor
Mississauga, ON L5B 2T4
905-615-3200 ext. 5825
park.planning@mississauga.ca

Tricia Radburn, M.Sc. (PI), MCIP, RPP
Environmental Assessment Coordinator
R. J. Burnside & Associates Limited
292 Speedvale Ave. W, Unit 20
Guelph, ON N1H 1C4
226-486-1778
CreditMeadowsParkEA@rjburnside.com

Notice of Collection of Personal Information:

This notice signals the commencement of the Class EA, a study which will define the problem, identify/evaluate alternative solutions, and determine a preferred design in consultation with regulatory agencies and the public. The study is being undertaken in accordance with the planning and design process for Schedule 'B' projects, as outlined in the "Municipal Class Environmental Assessment" document (October 2000, amended in 2015), which is approved under the *Ontario Environmental Assessment Act*.

Personal information is collected under the authority of the *Environmental Assessment Act* and will be used in the assessment process. With exception of personal information, all comments shall become part of the public records. Questions about this collection should be directed to the Project Manager listed above.