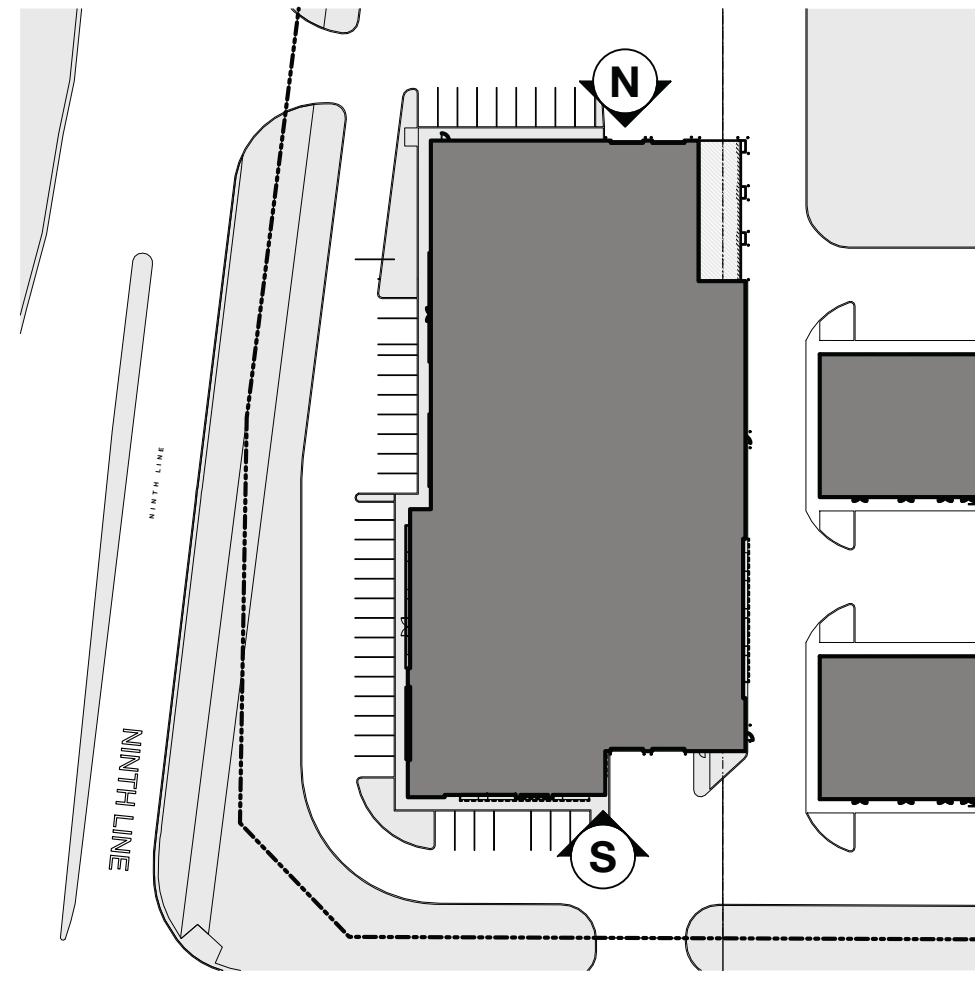


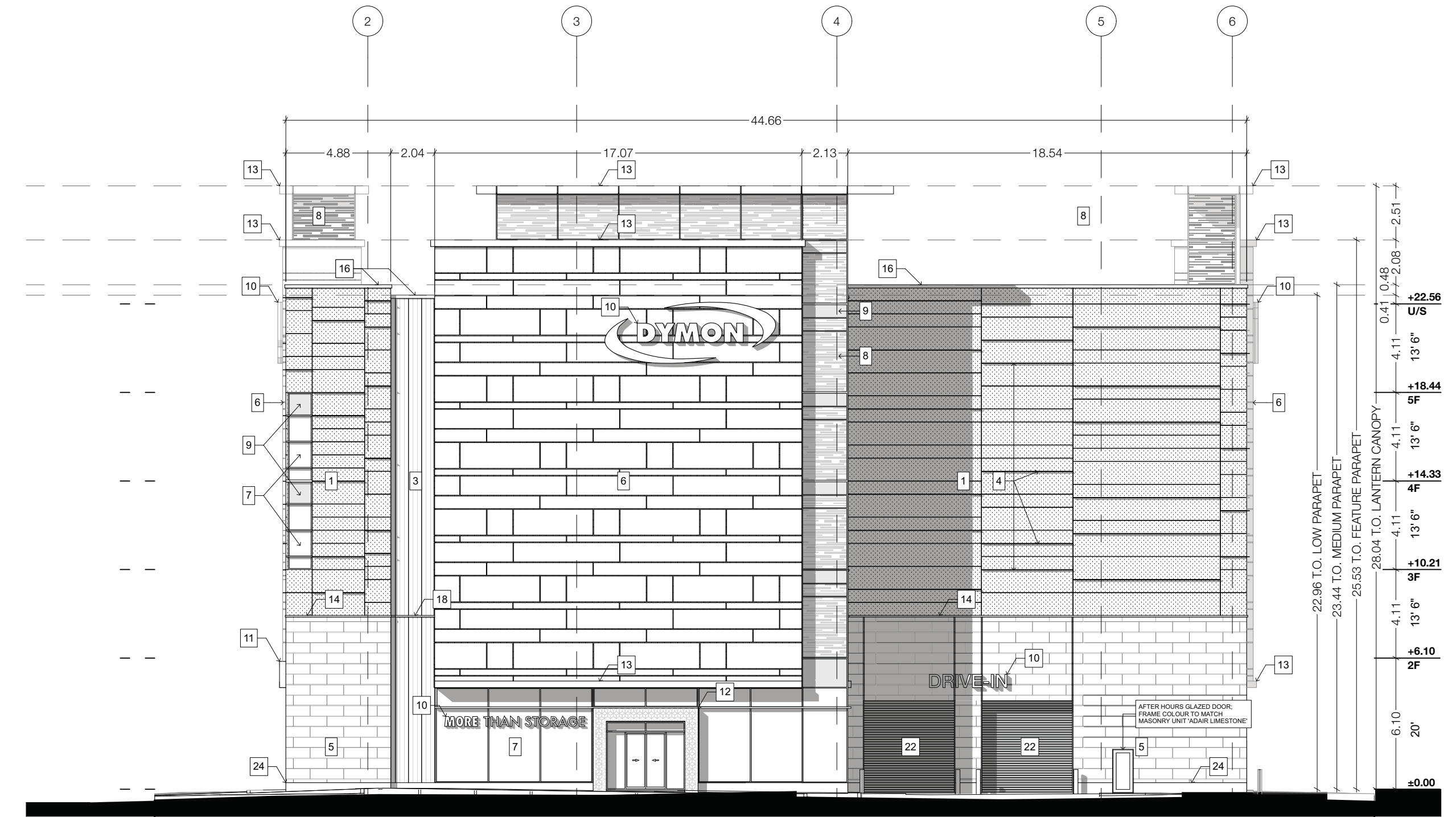
Revision	Reason
2017.11.16	SPC SUBMISSION
2018.09.11	ZBA SUBMISSION
2018.11.15	ZBA SUBMISSION
2018.11.19	CPA ZBA SPA COORDINATION
2020.11.25	CPA ZBA SPA COORDINATION
2020.12.01	CPA ZBA SPA SUBMISSION



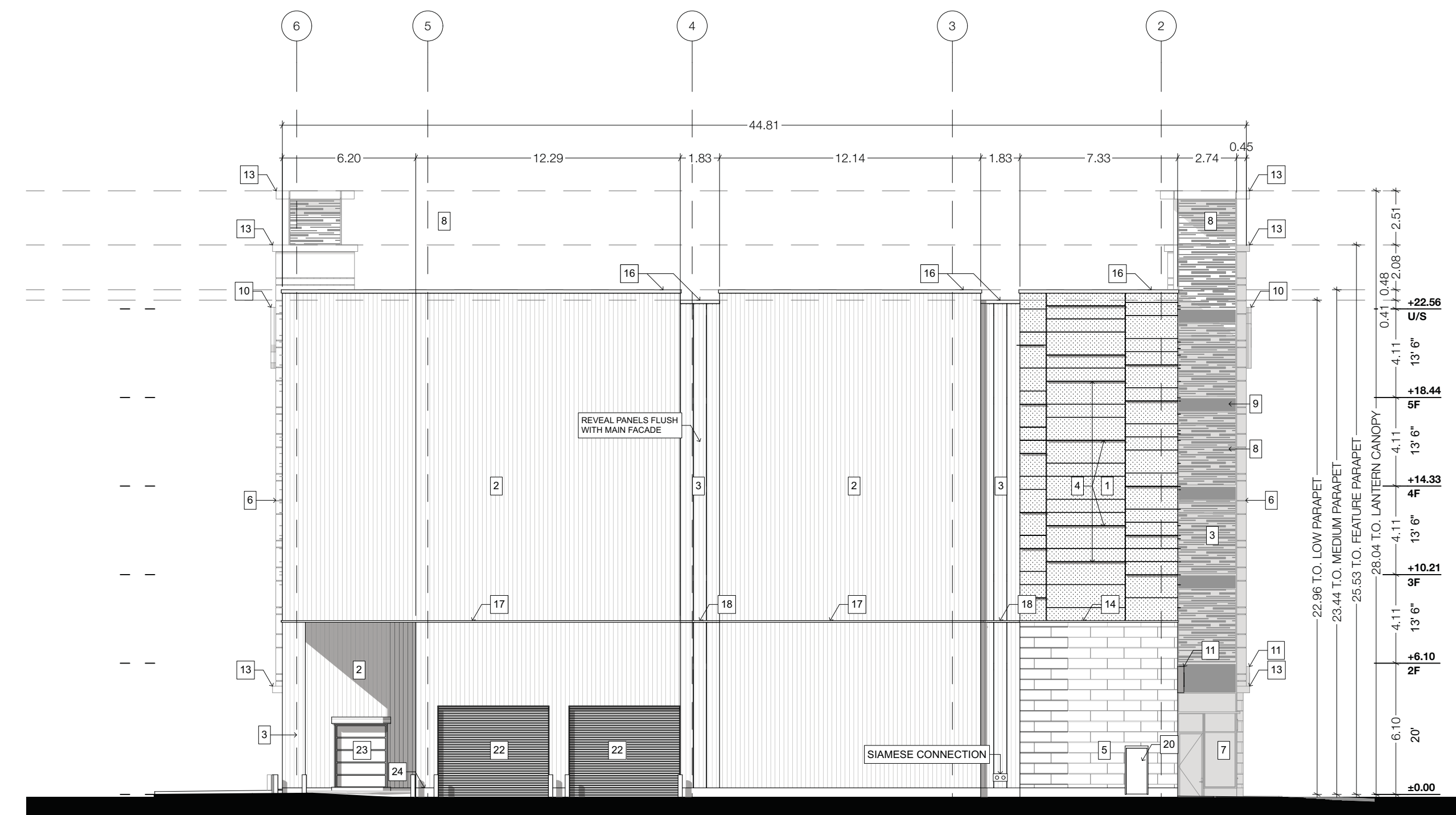
KEY PLAN  
SCALE: 1:1000

### LEGEND

- 1 INSULATED METAL PANEL (IMP) SYSTEM - HORIZONTAL ORIENTATION - MINI MICRO-RIE PROFILE - COLOUR: 'PEWTER'
- 2 INSULATED METAL PANEL (IMP) SYSTEM - VERTICAL ORIENTATION - 'EMBOSSED SHADOWLINE' PROFILE - COLOUR: 'PEWTER'
- 3 INSULATED METAL PANEL (IMP) SYSTEM - VERTICAL ORIENTATION (RECESSES & REVEALS) - 'EMBOSSED SHADOWLINE' PROFILE - COLOUR: 'DARK BRONZE'
- 4 KINGSPAN KARRIER FIN - STANDARD RECTANGLE FIN COLOUR: 'PEWTER'
- 5 3/12" ARCHITECTURAL MASONRY UNIT - ARISCRAFT ADAIR LIMESTONE - FINISH: FINE DRESSED SEPIA-VEINED - RUNNING BOND
- 6 ALULCOL - ALUMINIUM COMPOSITE MATERIAL - FINISH: 'LIGHT WENGE' 4mm FR CORE
- 7 CURTAIN WALL GLAZING - FINISH: VISION GLASS
- 8 CURTAIN WALL GLAZING - FINISH: FRITTED WINDOW FILM ON VISION GLASS
- 9 SPANDREL PANEL - COLOUR TO MATCH IMP 'PEWTER'
- 10 INTERNALLY LIT SIGNAGE - COLOUR: TBD
- 11 GLASS SIGNAGE BAND - COLOUR: TBD
- 12 BACK-LIT GLASS WITH FRIT PATTERN - COLOUR TO MATCH - 'BOLD BLUE' WITH WHITE FRITTING
- 13 METAL CANOPY - COLOUR TO MATCH IMP 'PEWTER'
- 14 CONTINUOUS BENT FLASHING SILL - COLOUR TO MATCH IMP 'PEWTER'
- 15 CONTINUOUS BENT METAL CAP - PREFINISHED - COLOUR TO MATCH IMP 'DARK BRONZE'
- 16 FIRESTONE PREFINISHED METAL CAP - FINISH: 'SLATE GREY' (ALL BENT METAL CAP PARAPETS)
- 17 PREFINISHED METAL IMP STACK JOINT COVER TRIM - COLOUR TO MATCH IMP 'PEWTER'
- 18 PREFINISHED METAL IMP STACK JOINT COVER TRIM - COLOUR TO MATCH IMP 'DARK BRONZE'
- 19 INSULATED HOLLOW METAL DOOR - COLOUR TO MATCH IMP 'PEWTER'
- 20 INSULATED HOLLOW METAL DOOR - COLOUR TO MATCH ARCHITECTURAL MASONRY UNIT 'ADAIR LIMESTONE'
- 21 INSULATED HOLLOW METAL DOOR - COLOUR TO MATCH VERTICAL IMP 'DARK BRONZE'
- 22 HIGH SPEED ROLL-UP O/H DOOR - FINISH: STEEL FRAME WITH POLYCARBONATE VISION SLATS
- 23 INSULATED O/H DOOR - COLOUR TO MATCH IMP 'PEWTER'
- 24 POURED CONCRETE
- 25 RESERVED



SOUTH ELEVATION



NORTH ELEVATION



Note: Building permit issuance shall be subject to the building permit drawings not being in contravention with these approved plans and drawings including, but not limited to, the exterior design of the building and exterior building materials.

Note: This drawing and all copyright therein are the sole and exclusive property of TACT Design Inc. Reproduction or use of this drawing in whole or in part by any means or in any way whatsoever without the prior written consent of TACT Design is strictly prohibited. Do not scale this drawing. Published Tuesday, December 1, 2020. File: 1611\_3855 Dundas v\_20\_1\_revised SP.ppt

design architect  
**TACT Architecture Inc.**  
8050 College Street (East Level)  
Toronto, Ontario M6G 1B8  
416-516-1949  
www.tactarchitecture.com

architect of record  
**nicholas caragianis architect**  
137 Dundas Street East, Suite 200  
Toronto, Ontario M5G 1S5  
416-517-8899  
www.nicholasca.com

job title  
**Dymon Storage**  
3855 Dundas Street East  
Mississauga, Ontario

client  
**Dymon Capital Corporation**

city file number

sheet title  
**South & North Elevations**

drawn by **JL, RD, FT, HG, ST** checked by **PJ**

issue date  
**Tuesday, December 1, 2020**

scale **1:200** job number **1611-15**