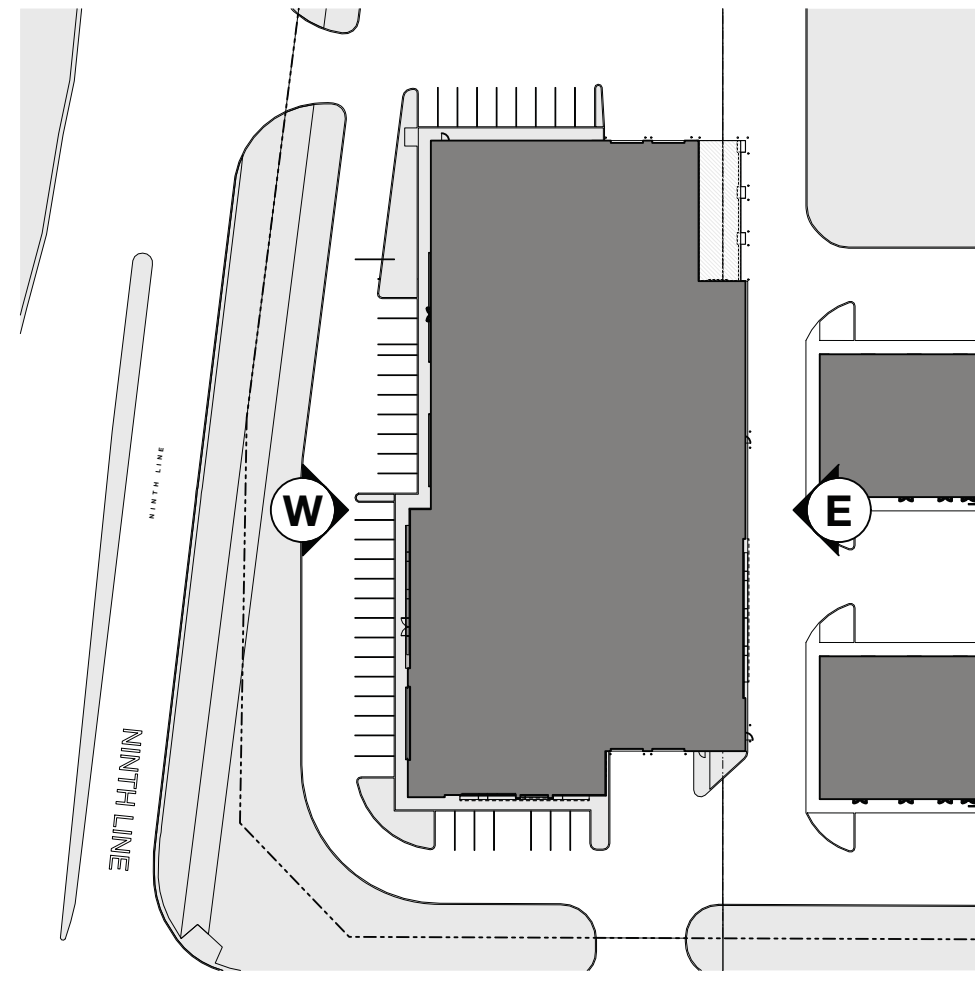


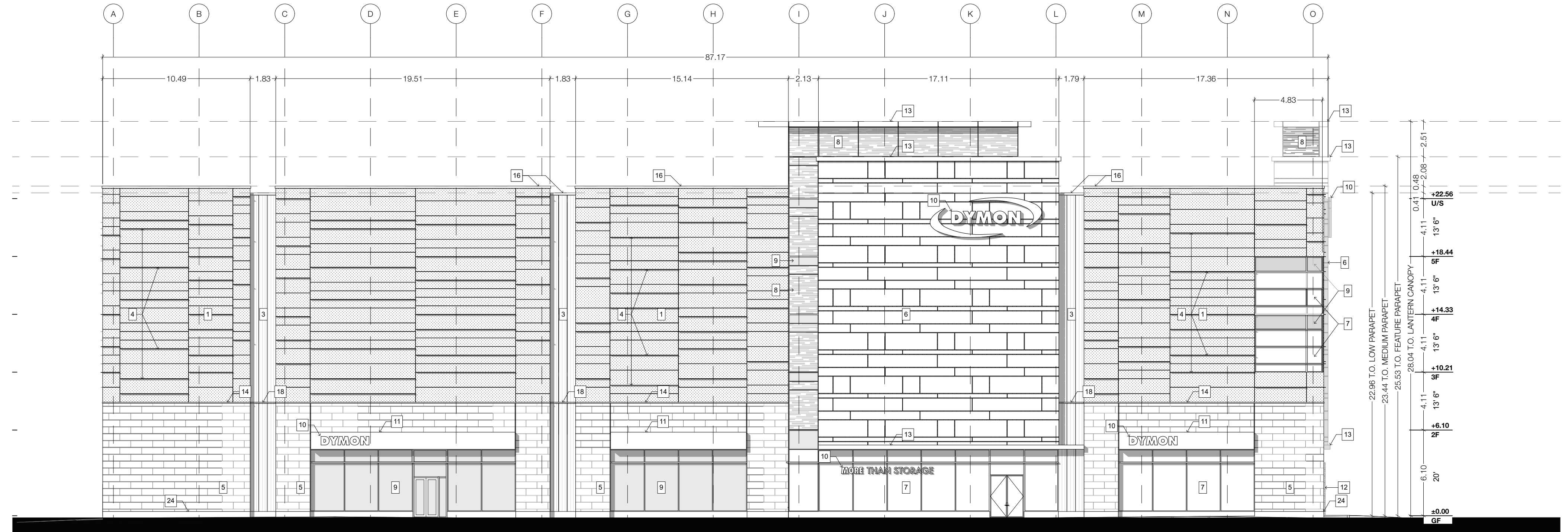
Revision	Reason
2017.11.16	SPC SUBMISSION
2018.09.11	ZBA SUBMISSION
2018.11.15	ZBA SUBMISSION
2020.11.19	OPA ZBA SPA COORDINATION
2020.11.25	OPA ZBA SPA COORDINATION
2020.12.01	OPA ZBA SPA SUBMISSION



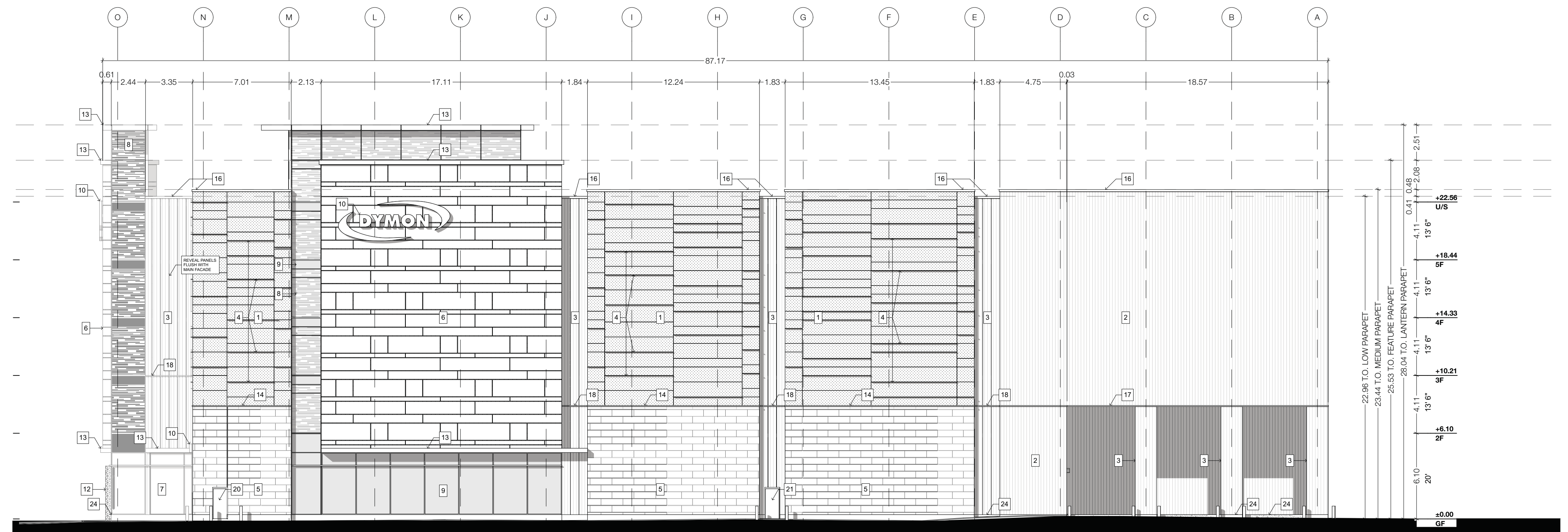
KEY PLAN
SCALE: 1:1000

LEGEND

- 1 INSULATED METAL PANEL (IMP) SYSTEM - HORIZONTAL ORIENTATION - MINI MICRO-FIBRE PROFILE - COLOUR: 'PEWTER'
- 2 INSULATED METAL PANEL (IMP) SYSTEM - VERTICAL ORIENTATION - EMBOSSED SHADOWLINE PROFILE - COLOUR: 'PEWTER'
- 3 INSULATED METAL PANEL (IMP) SYSTEM - VERTICAL ORIENTATION (RECESSES & REVEALS) - EMBOSSED SHADOWLINE PROFILE - COLOUR: 'DARK BRONZE'
- 4 KINGSPAN KARRIER FIN - STANDARD RECTANGLE FIN COLOUR: 'PEWTER'
- 5 3/2" ARCHITECTURAL MASONRY UNIT - ARCSRAFT ADAIR LIMESTONE - FINISH: FINE DRESSED SEPIA-VEINED - RUNNING BOND
- 6 ALULOC - ALUMINUM COMPOSITE MATERIAL - FINISH: 'LIGHT WENGE' 4mm FR CORE
- 7 CURTAIN WALL GLAZING - FINISH: VISION GLASS
- 8 CURTAIN WALL GLAZING - FINISH: FRITTED WINDOW FILM ON VISION GLASS
- 9 SPANDREL PANEL - COLOUR TO MATCH IMP 'PEWTER'
- 10 INTERNALLY LIT SIGNAGE - COLOUR: TBD
- 11 GLASS SIGNAGE BAND - COLOUR: TBD
- 12 BACK-LIT GLASS WITH FRIT PATTERN - COLOUR TO MATCH - 'BOLD BLUE' WITH WHITE FRITTING
- 13 METAL CANOPY - COLOUR TO MATCH IMP 'PEWTER'
- 14 CONTINUOUS BENT FLASHING SILL - COLOUR TO MATCH IMP 'PEWTER'
- 15 CONTINUOUS BENT METAL CAP - PREFINISHED - COLOUR TO MATCH IMP 'DARK BRONZE'
- 16 FIRESTONE PREFINISHED METAL CAP - FINISH: 'SLATE GREY' (ALL BENT METAL CAP PARAPETS)
- 17 PREFINISHED METAL IMP STACK JOINT COVER TRIM - COLOUR TO MATCH IMP 'PEWTER'
- 18 PREFINISHED METAL IMP STACK JOINT COVER TRIM - COLOUR TO MATCH IMP 'DARK BRONZE'
- 19 INSULATED HOLLOW METAL DOOR - COLOUR TO MATCH IMP 'PEWTER'
- 20 INSULATED HOLLOW METAL DOOR - COLOUR TO MATCH ARCHITECTURAL MASONRY UNIT 'ADAIR LIMESTONE'
- 21 INSULATED HOLLOW METAL DOOR - COLOUR TO MATCH VERTICAL IMP 'DARK BRONZE'
- 22 HIGH SPEED ROLL-UP O/H DOOR - FINISH: STEEL FRAME WITH POLYCARBONATE VISION SLATS
- 23 INSULATED O/H DOOR - COLOUR TO MATCH IMP 'PEWTER'
- 24 POURED CONCRETE
- 25 RESERVED



WEST ELEVATION



EAST ELEVATION



Note: Building permit issuance shall be subject to the building permit drawings not being in contravention with these approved plans and drawings including, but not limited to, the exterior design of the building and exterior building materials

Note: This drawing and all copyright therein are the sole and exclusive property of TACT Design Inc. Reproduction or use of this drawing in whole or in part by any means or in any way whatsoever without the prior written consent of TACT Design is strictly prohibited. Do not scale this drawing. Published Tuesday, December 1, 2020. file: 1611.3855 Dundas v_20_1_revised SP.pn

design architect
TACT Architecture Inc.
6050 College Street (Rear Level)
Toronto, Ontario M6G 1B8
416.516.1949
www.tactarchitecture.com

architect of record
nicholas caragianis architect
137 Dundas Street
Toronto, Ontario M5G 1B8
416.516.1949
www.nicholasca.com

job title
Dymon Storage
3855 Dundas Street East
Mississauga, Ontario

client
Dymon Capital Corporation

city file number

sheet title
West & East Elevations

drawn by **JL, RD, FT, HG, ST** checked by **PJ**

issue date
Tuesday, December 1, 2020

scale **1:200** job number **1611-15**