

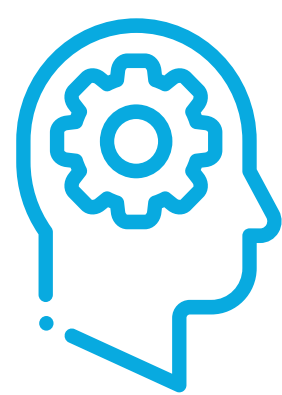
Welcome to the first

MISSISSAUGA

MOVES

Public Open House

Please visit each station to:



LEARN

Learn about the history of Mississauga.  
How has our city changed?  
What is the biggest change you've seen?



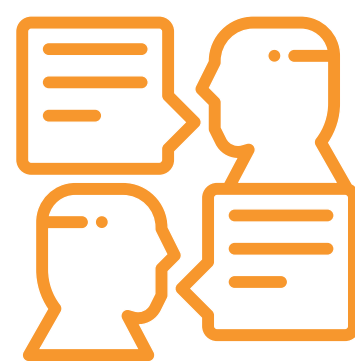
DISCOVER

Discover how we live, work, play and  
travel in Mississauga today.  
How do you live and travel here?



SHARE

Tell us about your moves in Mississauga.  
Highlight places that deserve special  
attention.



DISCUSS

Tell us how Mississauga Moves can  
help us prepare for the future.

# What is Mississauga Moves?

Mississauga Moves is our chance to plan together for the future of travel on our roads, sidewalks, trails and transit. Through this study we will try to answer this key question:

*How will we get around in the next 25 years?*

We are just getting started. Your participation throughout this project is crucial to its success.



This plan will be brought to Council for approval. Once approved, it will:

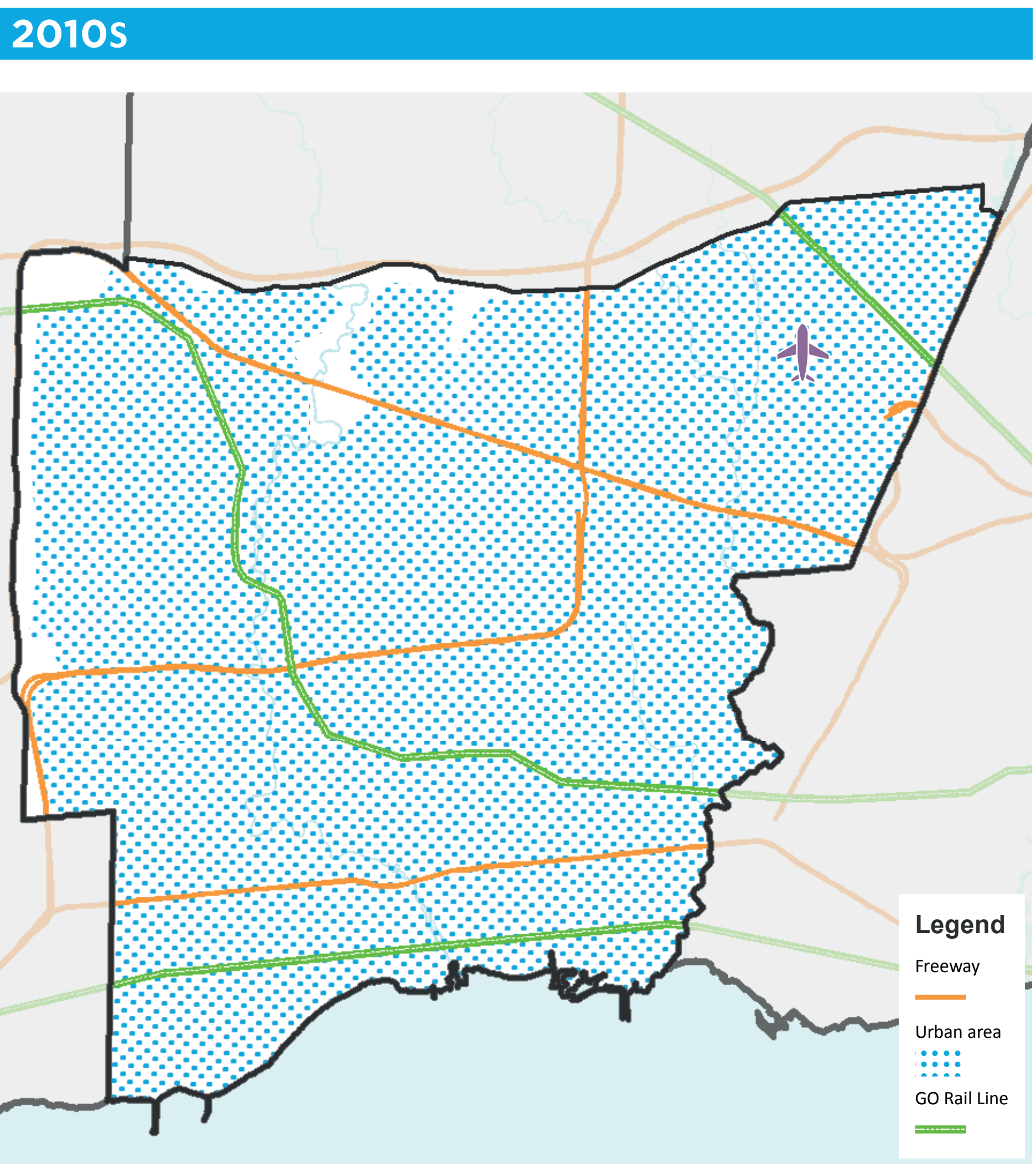
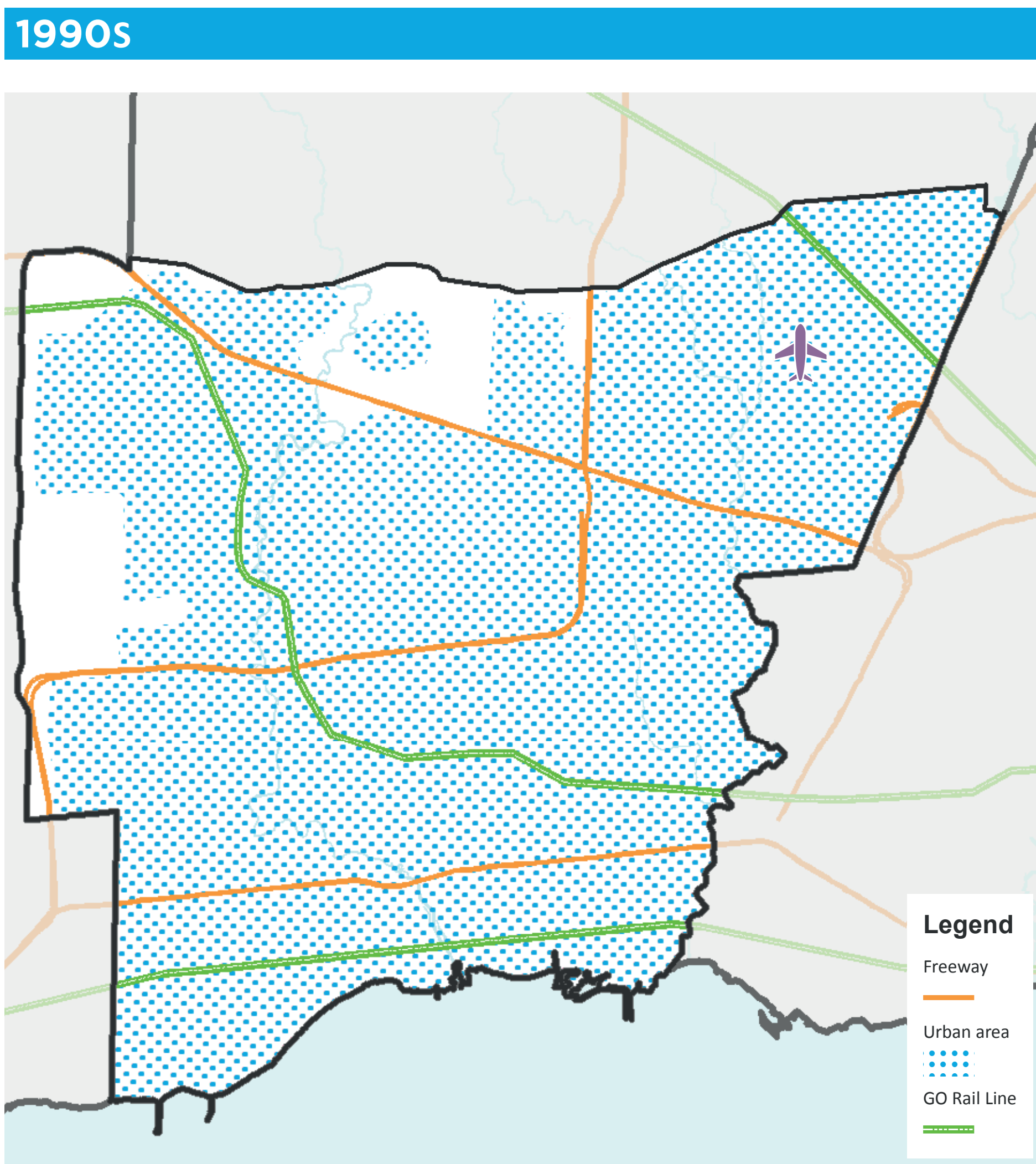
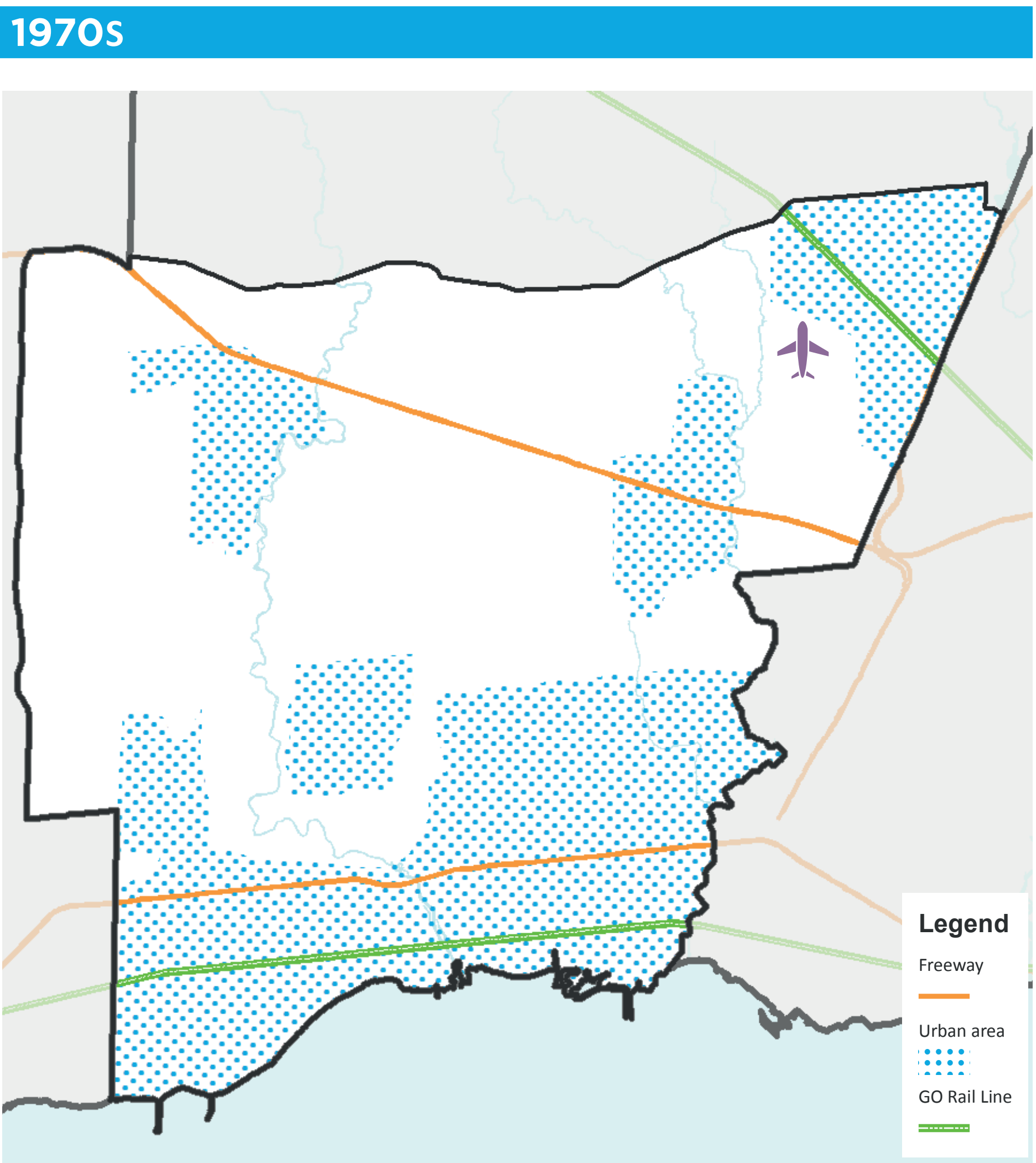
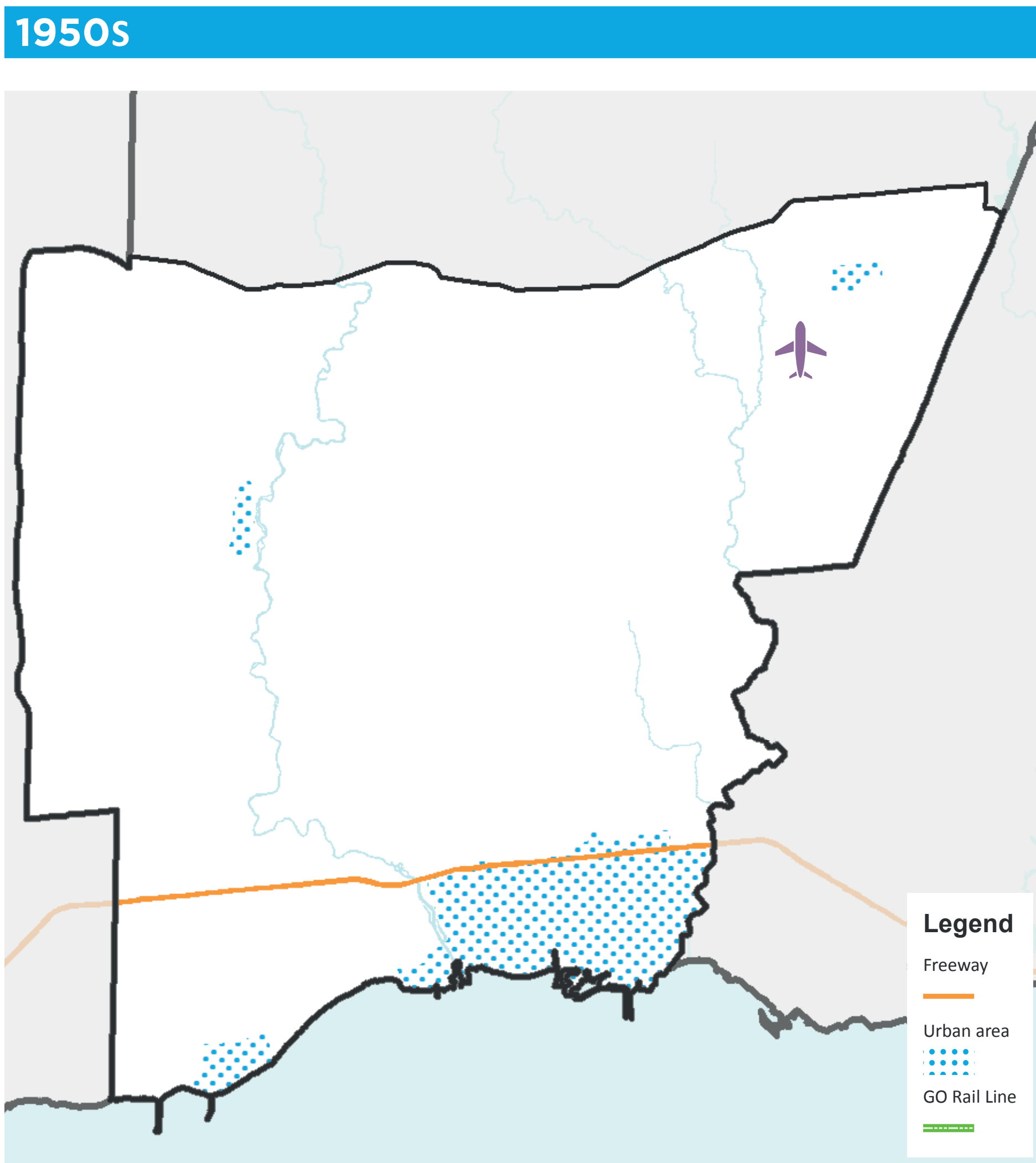
 <p>Serve as a policy framework and action plan</p>	 <p>Guide the City’s investment in and stewardship of transportation infrastructure and services</p>	 <p>Cover the period from now to 2041</p>
--	--	--

# How has Mississauga changed?

 **STN 1:**

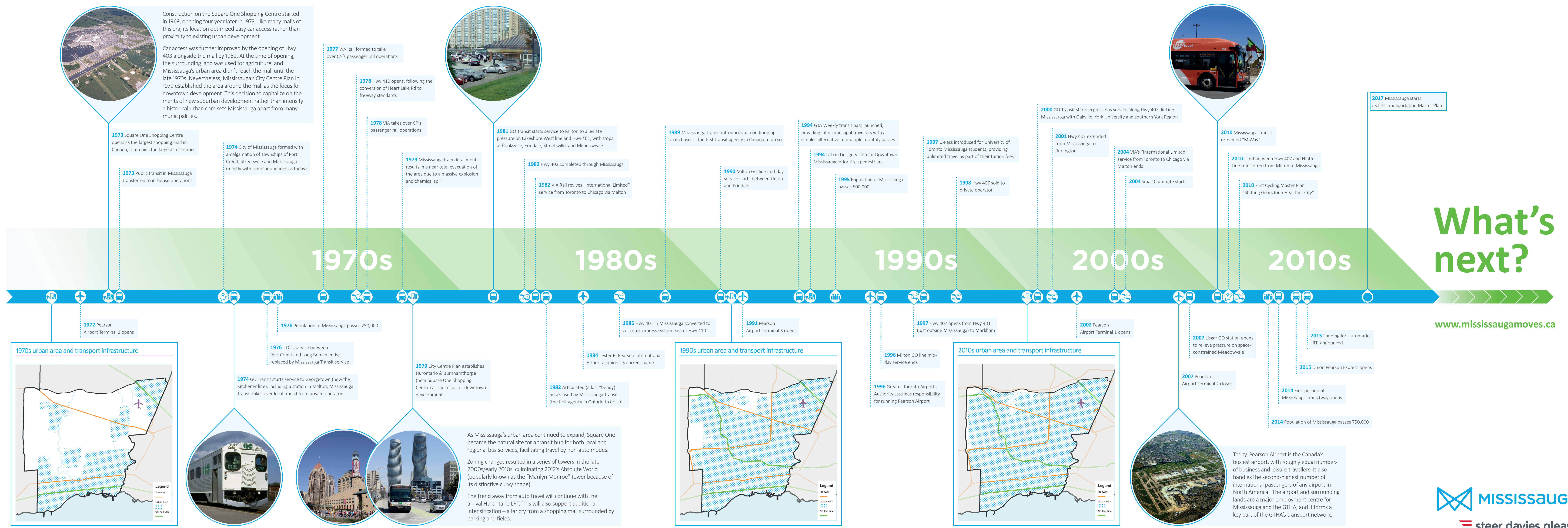
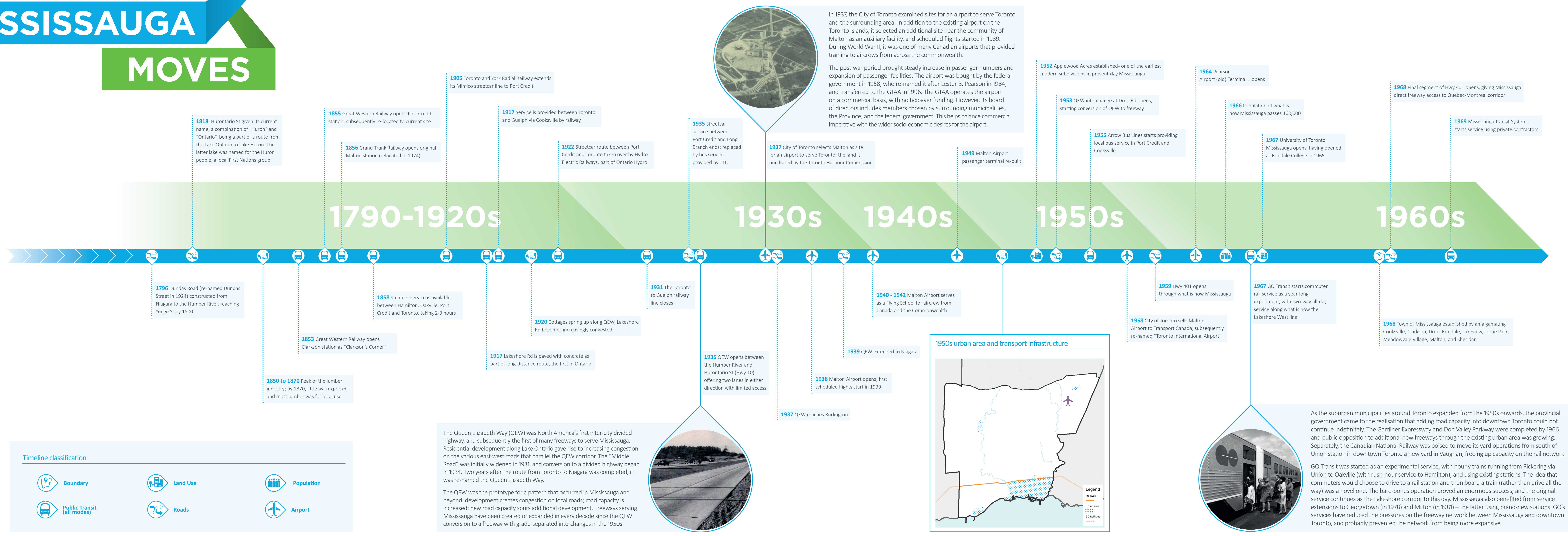
**LEARN**

Mississauga has historically grown outwards, with roads and rail guiding the way. Its **urban form and key transportation infrastructure** growth is shown below:



*Now, we are growing up, not out. Our transportation infrastructure must help support and guide this growth.*

# MISSISSAUGA MOVES



# When did you arrive in Mississauga?



STN 1:

LEARN

Please place a sticker in the applicable box:

BEFORE 1960	1960 - 1970	1970 - 1980	1980 - 1990	1990 - 2000	AFTER 2000

# What is the biggest change you have seen in Mississauga?



**STN 1:**

**LEARN**

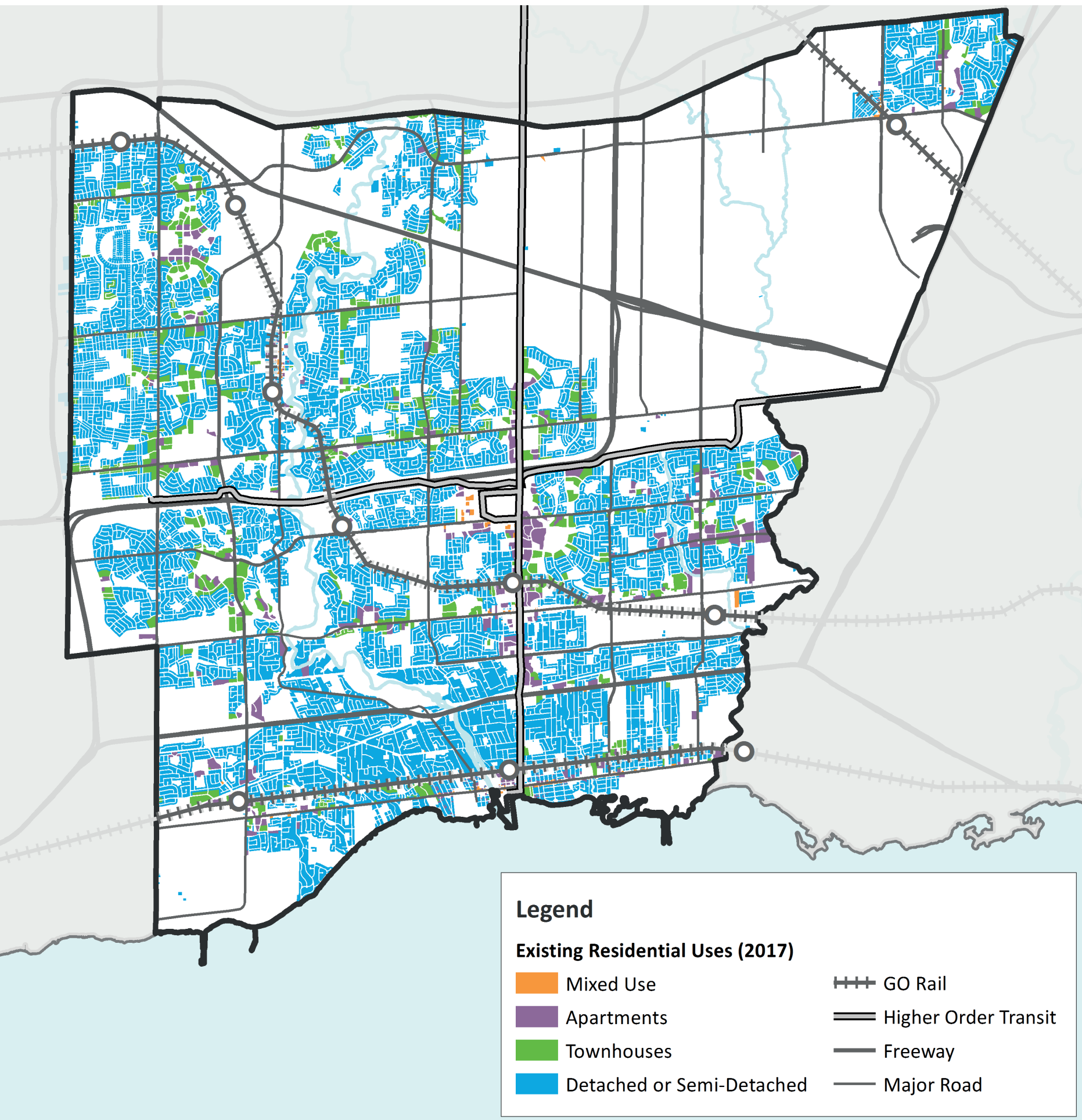
Please place a post-it note with your comments:

# Where do we live and work?



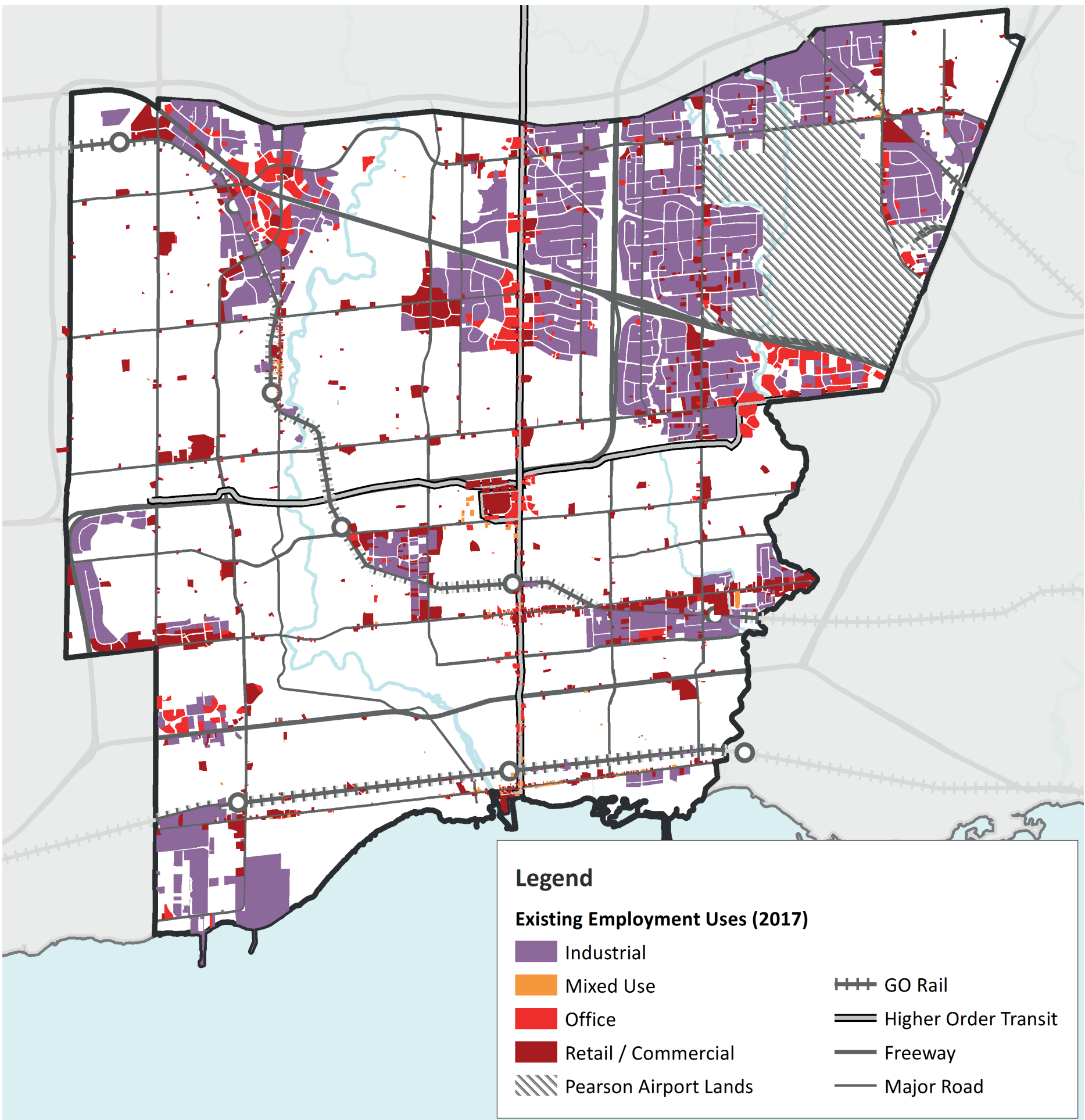
We live in many different types of homes, and attract workers from throughout the region.

## WHERE DO WE LIVE?

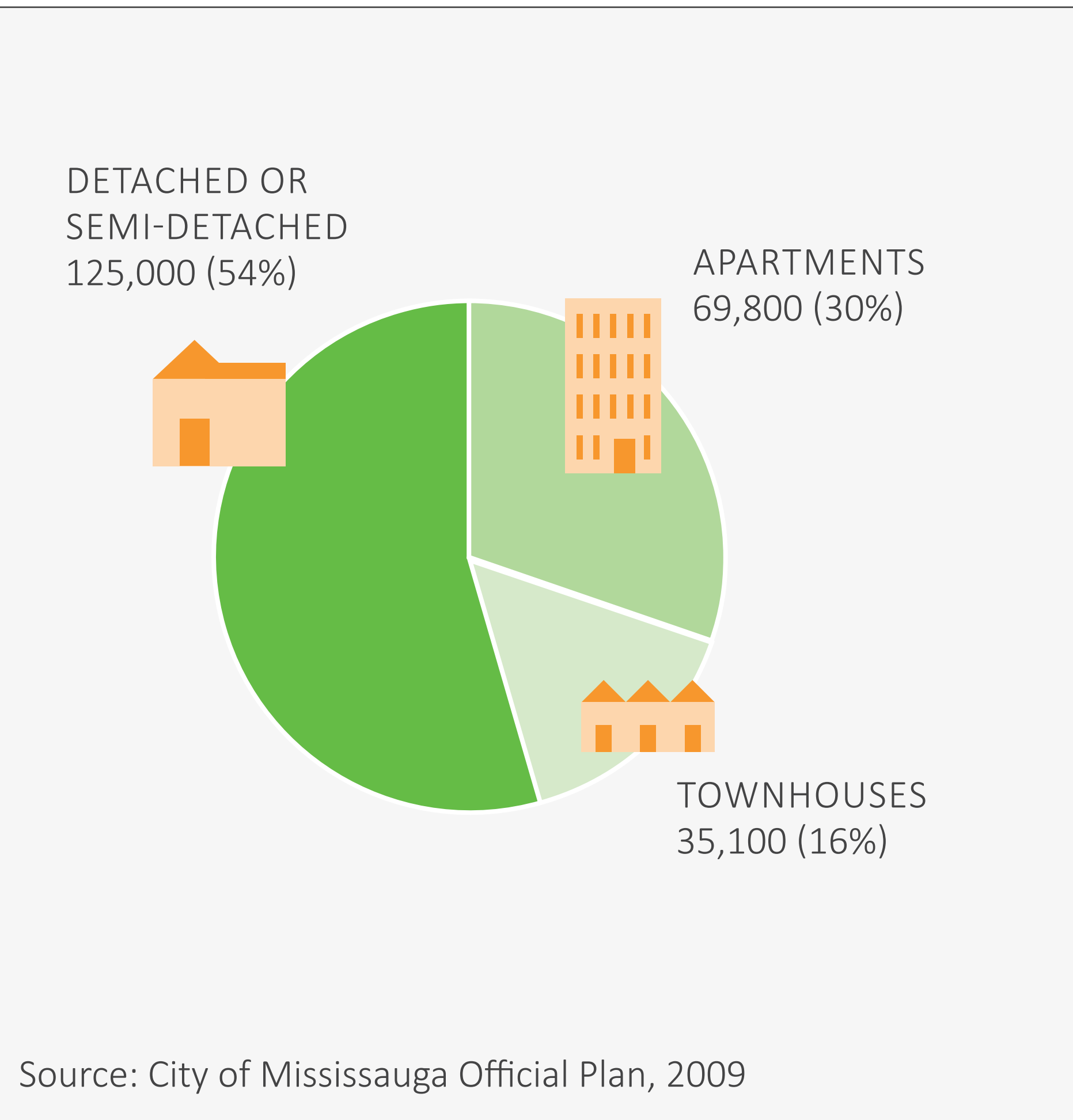


Source: City of Mississauga, 2017

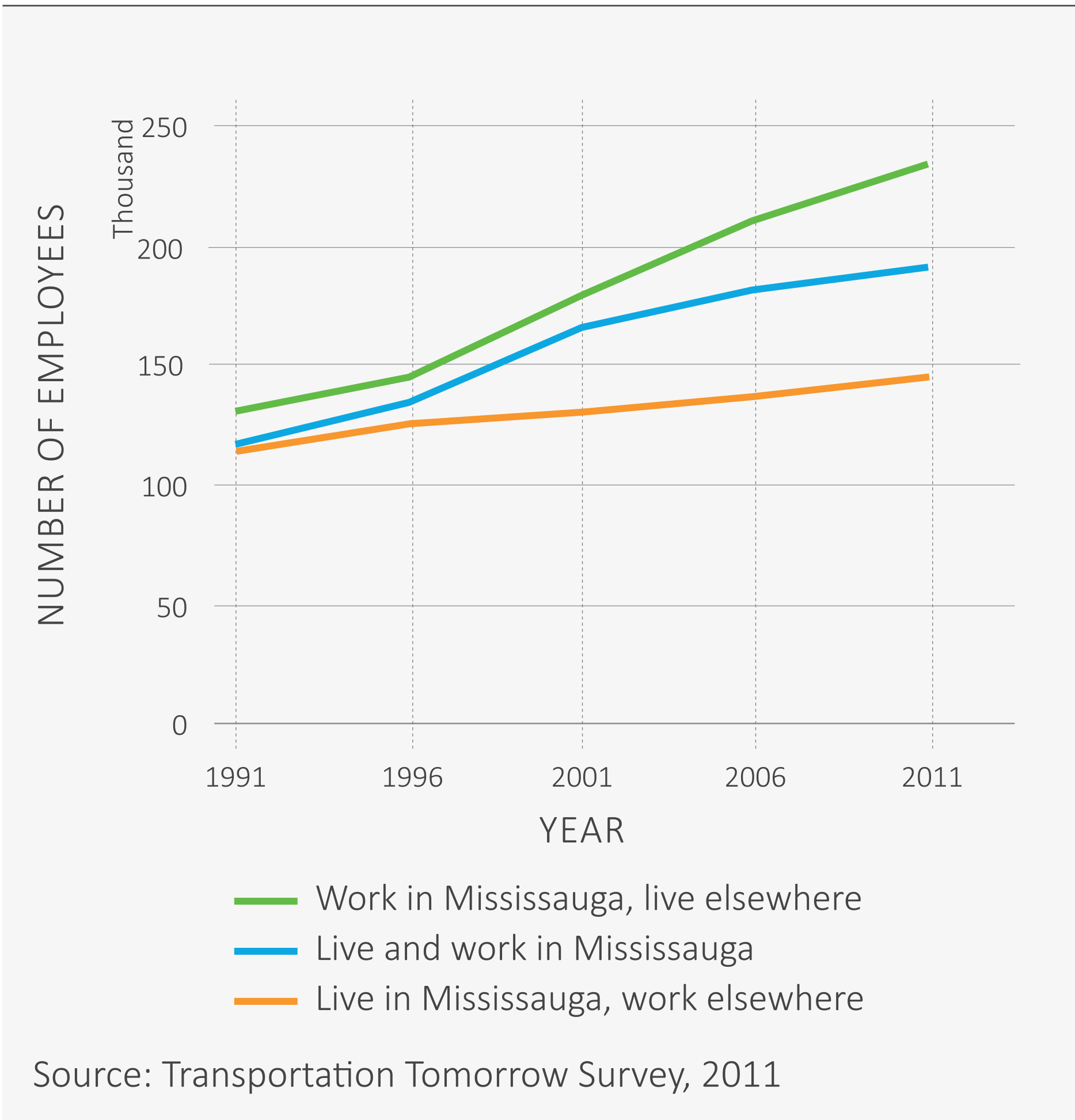
## WHERE DO WE WORK?



Source: City of Mississauga, 2017



Source: City of Mississauga Official Plan, 2009



Source: Transportation Tomorrow Survey, 2011

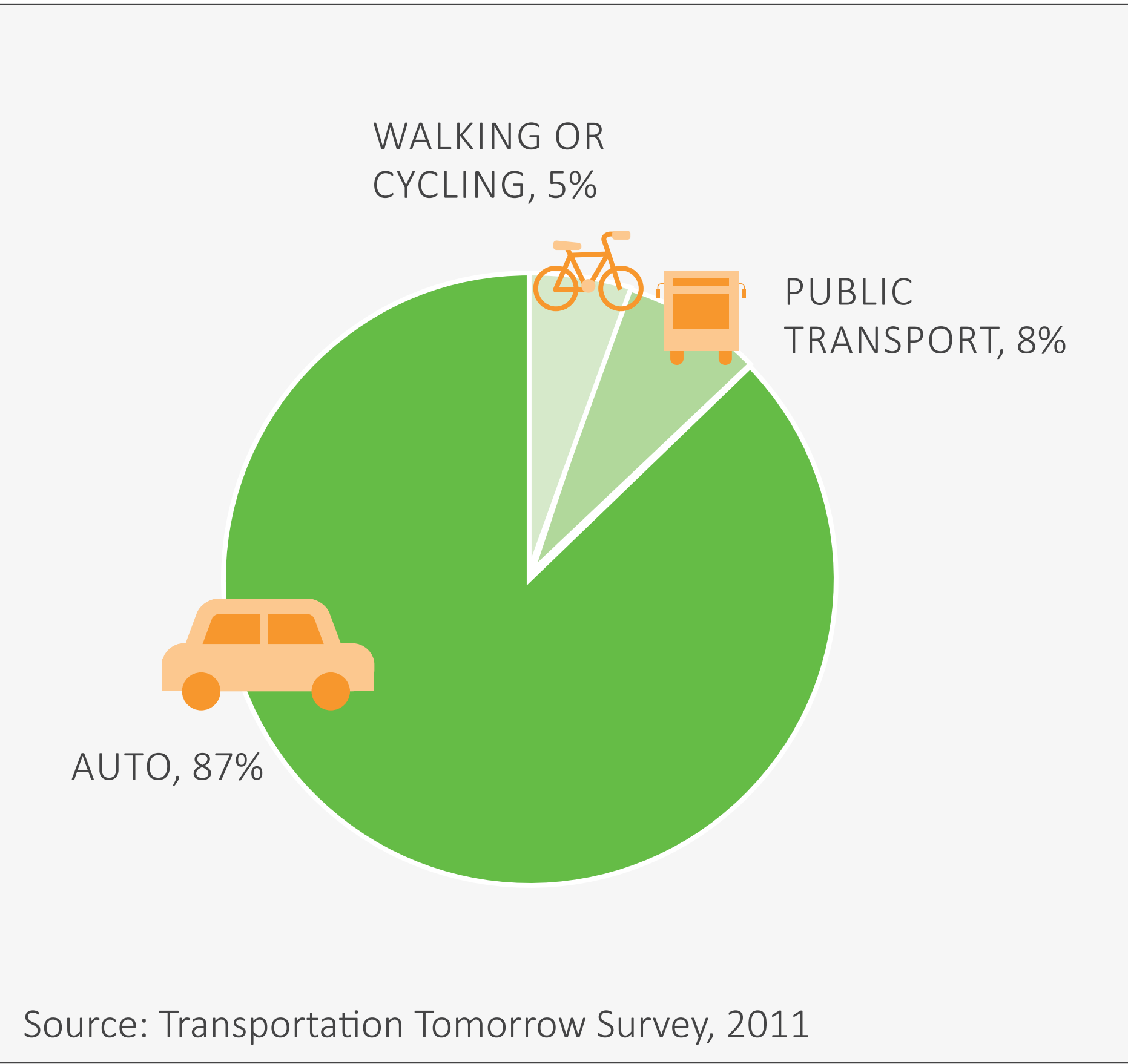
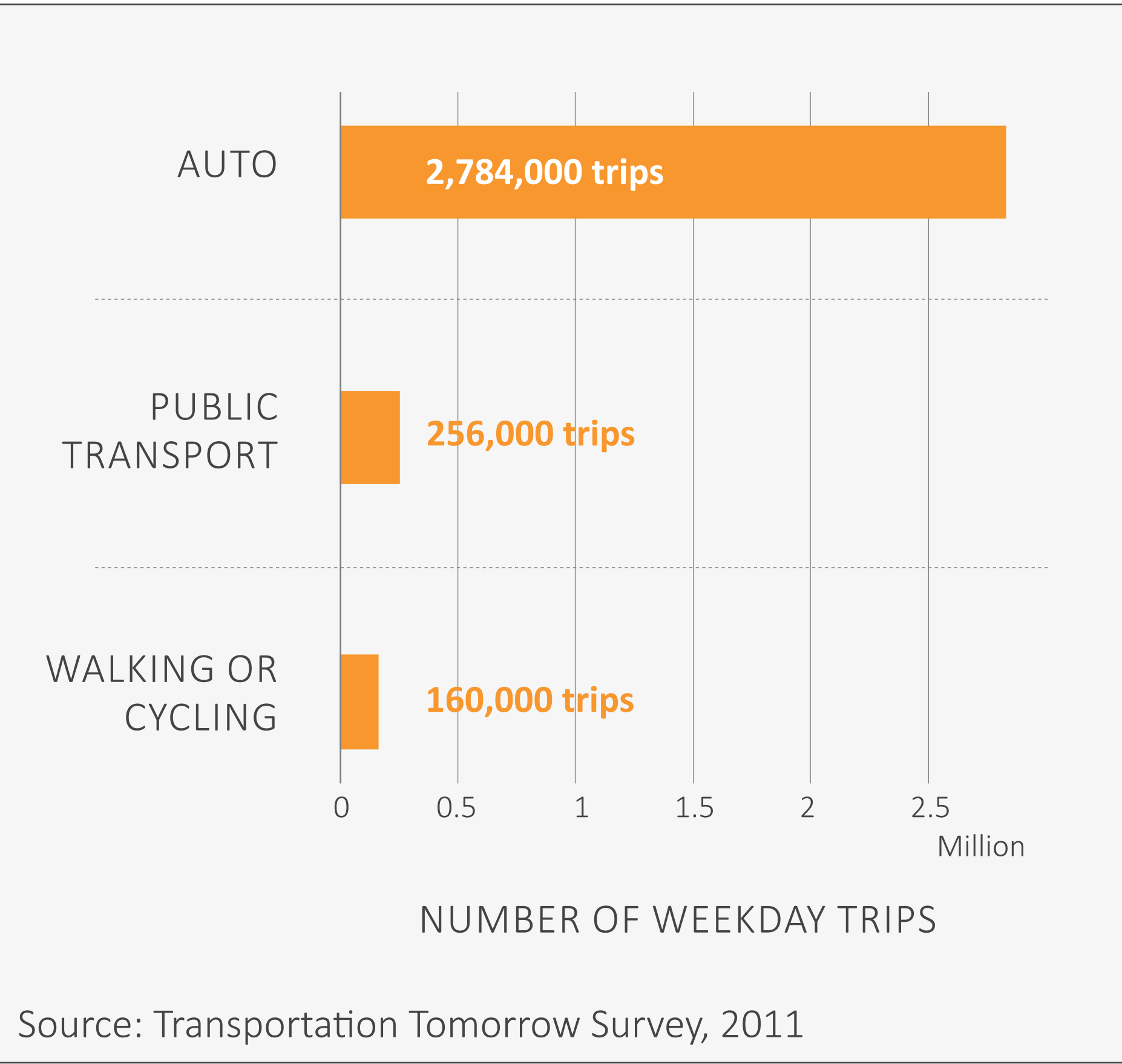
*Almost half of Mississauga households live in apartments or townhouses.*

*More people travel into Mississauga for work than travel out to work.*

# How and why do we travel?

We travel everyday – to go to work and school, to go shopping, to go to our doctor, to visit friends and family, and, of course, to return home.

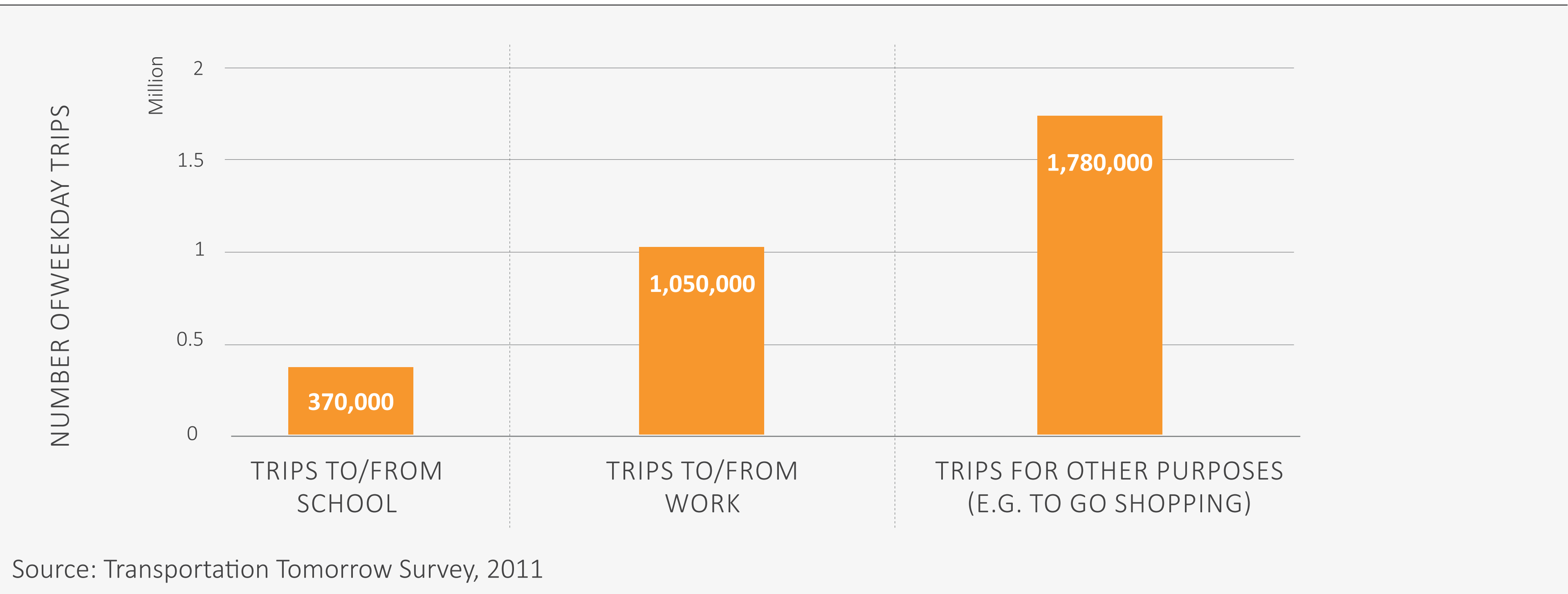
## HOW DO WE TRAVEL?



*There are over 3 million daily trips in Mississauga.*

*Most of those trips use an automobile, with 13% using other modes.*

## WHY DO WE TRAVEL?



*We make fewer trips for work or school than we do for other reasons, like shopping or visiting friends and family.*

# Where do you live?



Please place a sticker where applicable:

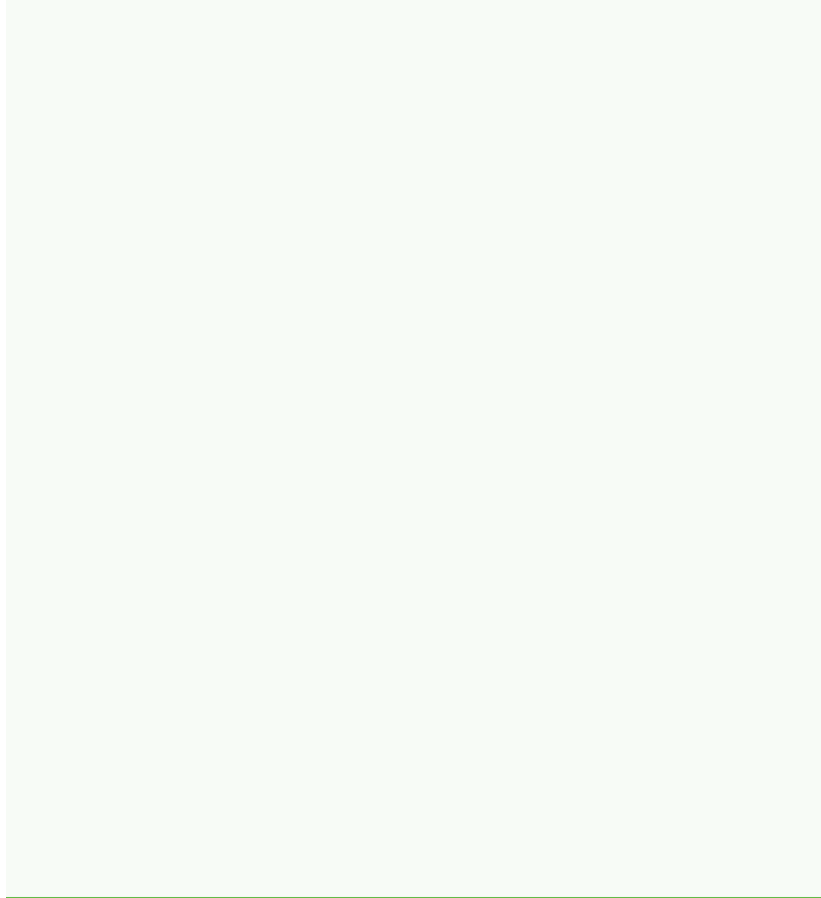


**BRAMPTON OR  
CALEDON**

**HALTON REGION**

**TORONTO**

**OTHER**



# How do you get around Mississauga?

Please place a sticker to indicate the way you travel for different types of trips:

	TO WORK	TO SCHOOL	TO GO SHOPPING	TO SOCIALIZE	TO GO OUT AT NIGHT

Legend:

BY CAR

ON TRANSIT

CYCLING OR WALKING

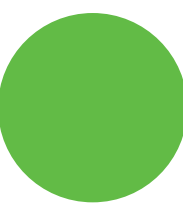

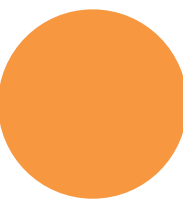
# What is Mississauga like?



# What is Mississauga like for you?

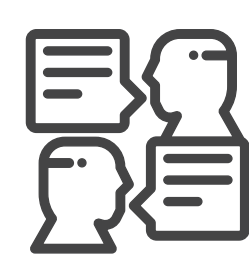
Think about places you visit regularly. Please place a sticker for places that are:

Legend:

-  EASY FOR YOU TO GET TO
-  HARD FOR YOU TO GET TO
-  POINTS ON YOUR ROUTE THAT ARE A CHALLENGE



# What does the future hold?



STN 4:

DISCUSS

Our times are changing:



1 Our work patterns are changing: 15% of us work at home or outside a usual place of work.



4 We are shopping more online, increasing home deliveries. Between 2011 and 2016, online purchases tripled in Canada.



2 We are a diverse and evolving city. Half of all Mississauga residents' first language is not English.



5 Poverty is a growing concern with the gap between rich and poor neighbourhoods growing across our region.



3 Our communities are aging. By 2031, it's expected that one in three Mississauga residents will be over the age of 55.

The way we travel will change too:



A Traffic is a concern for all of us. Throughout the GTHA, congestion is costing us almost \$4 billion a year.



C Apps allow us to share cars, hail rides, and plan trips on transit, by bike, or on foot.



B We are switching away from cars to transit, cycling, and walking. Across the GTHA there are over 20 major transit projects in delivery.



D New vehicle technology like electric cars and self driving vehicles promise an entirely different way to travel.

# How do you want to see Mississauga Move in the future?

 **STN 4:**

**DISCUSS**

Please place a post-it note with your comments: